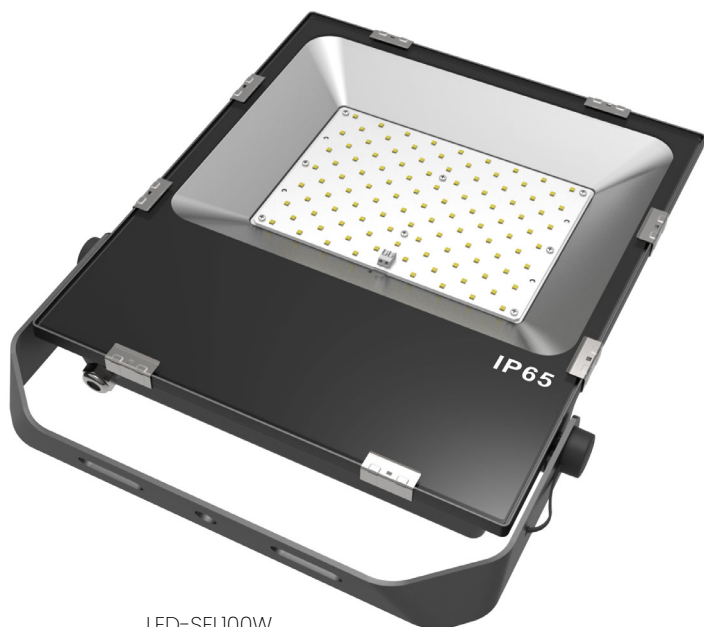


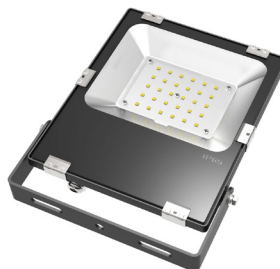


# POWER-LITE®

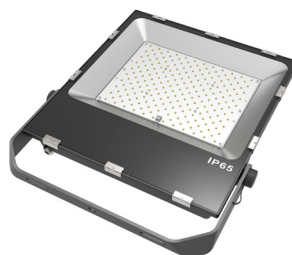
Certainty at The Speed of Light



LED-SFL100W



LED-SFL50W



LED-SFL150W | LED-SFL200W

## LED SLIMLINE

### FLOOD LIGHT

#### LED-SFL

Utilising the POWER-LITE® LED Flood Light provides many benefits in addition to the substantial costs savings achieved through our LED technology. Our LED Flood Lights tackle the usual challenges faced with providing a lighting solution, including the elimination of UV therefore insects will not be attracted to this light. There is no warm up process, the light is immediate and reaches full output upon the flick of a switch. The IP65 rating and high quality powder coating provides a durable and safe solution, protecting the product against rust and water penetration, meaning no maintenance is required.



#### APPLICATIONS

Warehouses

Commercial

Petrol Stations

Retail



☎ 1800 909 306

🌐 [nedlandsgroup.com.au](http://nedlandsgroup.com.au)

✉ [sales@nedlandsgroup.com.au](mailto:sales@nedlandsgroup.com.au)

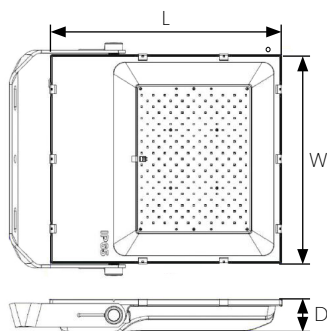


# POWER-LITE®

Certainty at The Speed of Light

## DIMENSIONS (L x W x D mm)

LED-SFL50W	265 x 220 x 47.5
LED-SFL100W	345 x 295 x 53.5
LED-SFL150W	365 x 330 x 53.5
LED-SFL200W	400 x 360 x 53.5



**LED Chip**  
Philips SMD 3030

**Working Temp**  
-30°C to +50°C







**Material**  
Die Cast Aluminium

**LM80**  
9,000 Hours

**TM21**  
128,000 Hours

 6000K

 Black Frame Colour

PRODUCT	SPECIFICATIONS			CODE
50W LED SLIMLINE FLOOD LIGHT	 AC85-265V	 6000lm	 120° beam angle	LED-SFL50W
	 Power factor >0.90	 Lifespan 54,000 hrs	 Net Weight 2.3kg	
	 Start Up Current 1.2A	 Replaces 100W Halogen	 LED Driver UL TUV Non-Dimmable	
	 Connection 1.5m Power Cable	 Carton Qty 10		
100W LED SLIMLINE FLOOD LIGHT	 AC85-265V	 12,500lm	 120° beam angle	LED-SFL100W
	 Power factor >0.90	 Lifespan 54,000 hrs	 Net Weight 4.1kg	
	 Start Up Current 1.2A	 Replaces 200W Halogen	 LED Driver Meanwell Non-Dimmable	
	 Connection 1.5m Power Cable	 Carton Qty 1		
150W LED SLIMLINE FLOOD LIGHT	 AC90-305V	 18,000lm	 110° beam angle	LED-SFL150W
	 Power factor >0.92	 Lifespan 50,000 hrs	 Net Weight 5.4kg	
	 Start Up Current 1.5A	 Replaces 300W Halogen	 LED Driver Meanwell Non-Dimmable	
	 Connection 1.2m Power Cable	 Carton Qty 1		
200W LED SLIMLINE FLOOD LIGHT	 AC90-305V	 24,600lm	 120° beam angle	LED-SFL200W
	 Power factor >0.95	 Lifespan 50,000 hrs	 Net Weight 6.4kg	
	 Start Up Current 2.4A	 Replaces 500W Halogen	 LED Driver Meanwell Non-Dimmable	
	 Connection 1.2m Power Cable	 Carton Qty 1		

 IP65

 IK08

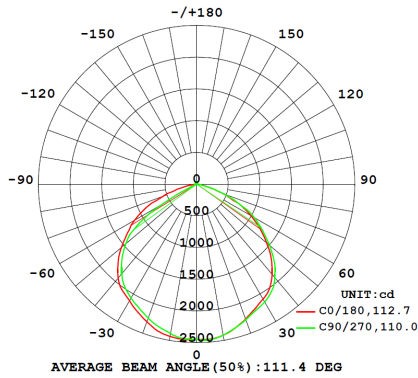


# POWER-LITE®

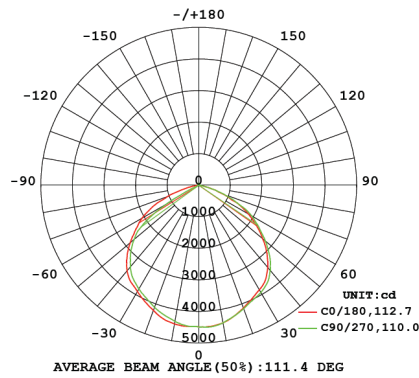
Certainty at The Speed of Light

## PHOTOMETRICS

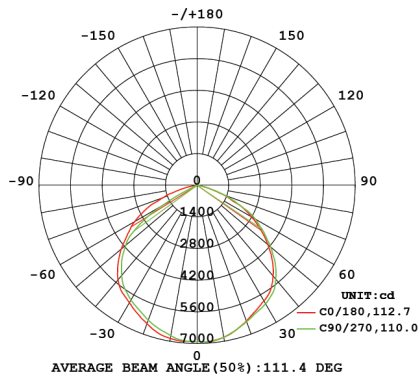
LED-SFL50W | 6000K



LED-SFL100W | 6000K



LED-SFL150W | 6000K



LED-SFL200W | 6000K

