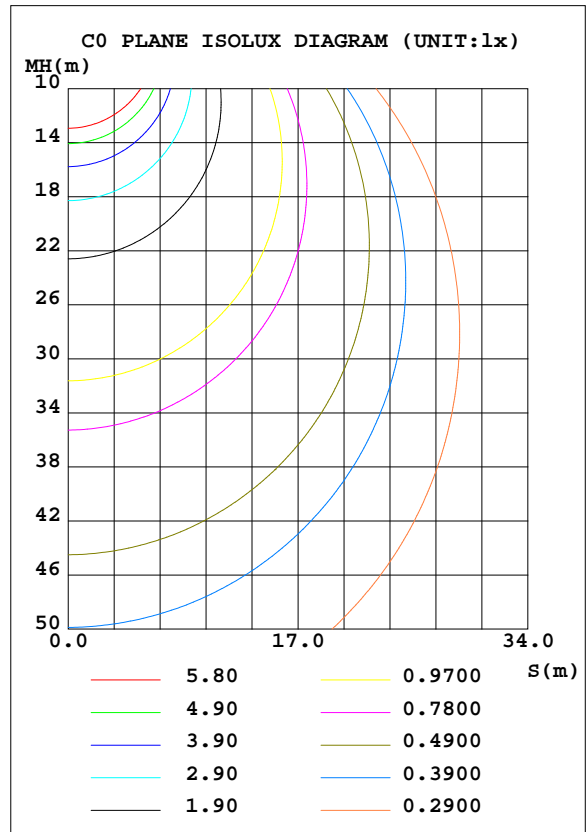
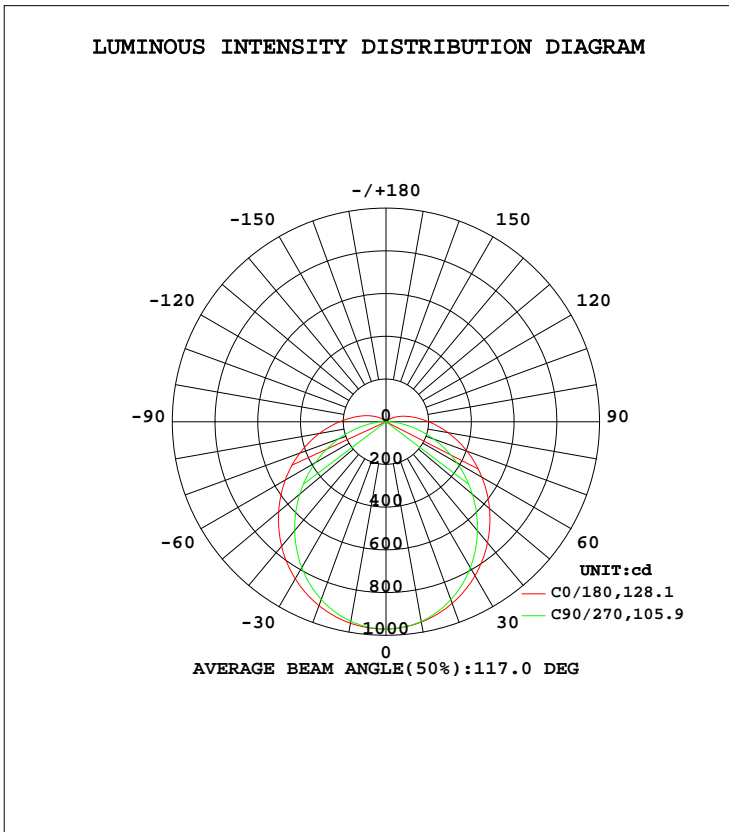


LUMINAIRE PHOTOMETRIC TEST REPORT

Test:U:24.021V I:1.0691A P:25.669W PF:1.0000 Freq:50.00Hz Lamp Flux:3276.11x1 lm		
NAME: WP18W-CC-MS-24V	TYPE:LED	WEIGHT:
SPEC.:	DIM.:	SERIAL No.:BLD20230830A24
MFR.:	SUR.:0.1*0.6	Shielding Angle:

DATA OF LAMP		PHOTOMETRIC DATA Eff: 127.63 lm/W			
MODEL		I _{max} (cd)	970.6	S/MH(C0/180)	1.30
NOMINAL POWER(W)		LOR(%)	100.0	S/MH(C90/270)	1.21
RATED VOLTAGE(V)		TOTAL FLUX(lm)	3276.1	η UP, DN(C0-180)	3.2,46.8
NOMINAL FLUX(lm)	3276.11	CIE CLASS	DIRECT	η UP, DN(C180-360)	3.3,46.7
LAMPS INSIDE	1	η up(%)	6.5	CIBSE SHR NOM	1.25
TEST VOLTAGE(V)		η down(%)	93.5	CIBSE SHR MAX	1.35



C Range: 0 - 360DEG
 C Interval: 22.5DEG
 Test Speed: MEDIUM
 Temperature:25.3DEG
 Operators:NEIKO
 Test Date:30 August 2023

γ Range: 0 - 130DEG
 γ Interval: 0.5DEG
 Test System:EVERFINE GO-2000A_V1 SYSTEM V2.00.421
 Humidity:65.0%
 Test Distance:9.770m [K=1.0000]
 Remarks:

ZONAL FLUX DIAGRAM

ZONAL FLUX DIAGRAM:

γ	C0	C45	C90	C135	C180	C225	C270	C315	γ	Φ zone	Φ total	%lum,lamp
10	952.4	949.9	949.3	954.8	957.7	954.0	948.7	949.6	0- 10	91.73	91.73	2.8,2.8
20	905.1	894.4	886.6	903.6	916.2	902.6	885.9	893.5	10- 20	262.2	353.9	10.8,10.8
30	833.2	809.0	789.1	821.9	849.4	820.6	788.2	807.6	20- 30	396.3	750.3	22.9,22.9
40	739.6	701.0	666.0	716.5	760.5	715.3	665.2	699.1	30- 40	477.9	1228	37.5,37.5
50	632.3	578.5	527.9	595.8	656.0	594.7	527.0	576.4	40- 50	500.2	1728	52.8,52.8
60	518.5	451.7	382.9	468.9	544.0	468.7	381.8	448.9	50- 60	467.3	2196	67,67
70	403.8	330.6	238.3	347.0	428.9	345.9	236.9	327.6	60- 70	391.1	2587	79,79
80	294.7	222.9	104.2	237.1	316.6	236.3	103.2	219.9	70- 80	289.4	2876	87.8,87.8
90	199.9	137.3	24.02	147.7	217.0	147.6	23.86	134.7	80- 90	186.8	3063	93.5,93.5
100	128.3	77.47	15.06	84.30	140.1	84.36	15.12	75.40	90-100	110.9	3174	96.9,96.9
110	75.77	38.11	9.858	42.01	83.35	42.05	9.811	36.56	100-110	60.97	3235	98.7,98.7
120	38.32	13.96	6.473	15.62	42.70	15.57	6.351	12.74	110-120	29.38	3264	99.6,99.6
130	13.46	6.391	4.595	6.556	15.26	6.541	4.572	5.985	120-130	11.57	3276	100,100
140	0	0	0	0	0	0	0	0	130-140	0.1637	3276	100,100
150	0	0	0	0	0	0	0	0	140-150	0	3276	100,100
160	0	0	0	0	0	0	0	0	150-160	0	3276	100,100
170	0	0	0	0	0	0	0	0	160-170	0	3276	100,100
180	0	0	0	0	0	0	0	0	170-180	0	3276	100,100
DEG	LUMINOUS INTENSITY:cd									UNIT:lm		

Conical surface Flux(90deg): 1479.2 lm

%lum = 45.2%
 %lamp = 45.2%

Conical surface Flux(120deg): 2195.7 lm

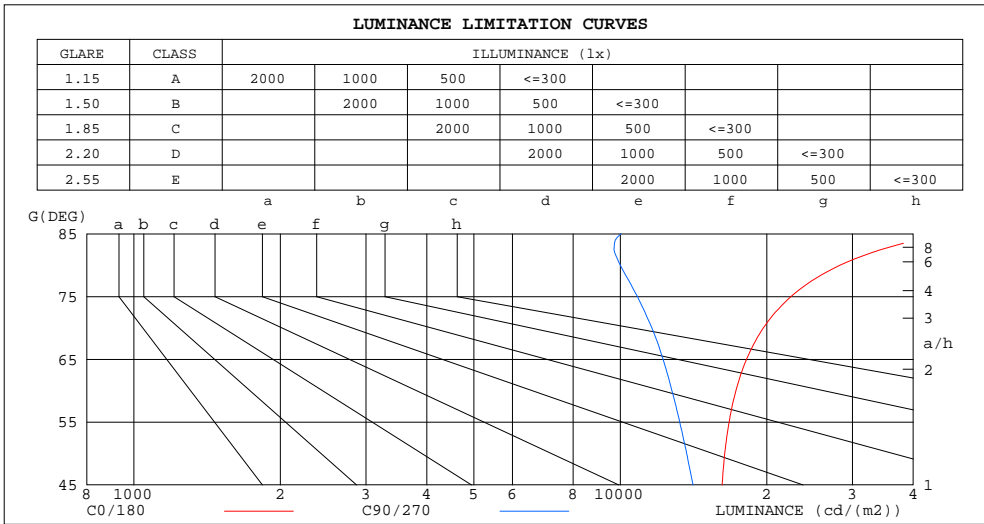
%lum = 67.0%
 %lamp = 67.0%

C Range: 0 - 360DEG
 C Interval: 22.5DEG
 Test Speed: MEDIUM
 Temperature:25.3DEG
 Operators:NEIKO
 Test Date:30 August 2023

γ Range: 0 - 130DEG
 γ Interval: 0.5DEG
 Test System:EVERFINE GO-2000A_V1 SYSTEM V2.00.421
 Humidity:65.0%
 Test Distance:9.770m [K=1.0000]
 Remarks:

LUMINANCE LIMITATION CURVES

Test:U:24.021V I:1.0691A P:25.669W PF:1.0000 Freq:50.00Hz Lamp Flux:3276.11x1 lm		
NAME: WP18W-CC-MS-24V	TYPE:LED	WEIGHT:
SPEC.:	DIM.:	SERIAL No.:BLD20230830A24
MFR.:	SUR.:0.1*0.6	Shielding Angle:



LUMINANCE cd/(m2)		
G (DEG)	C0/180	C90/270
85	46808	10035
80	28286	10003
75	22423	10845
70	19675	11614
65	18169	12245
60	17282	12765
55	16738	13249
50	16393	13690
45	16196	14109

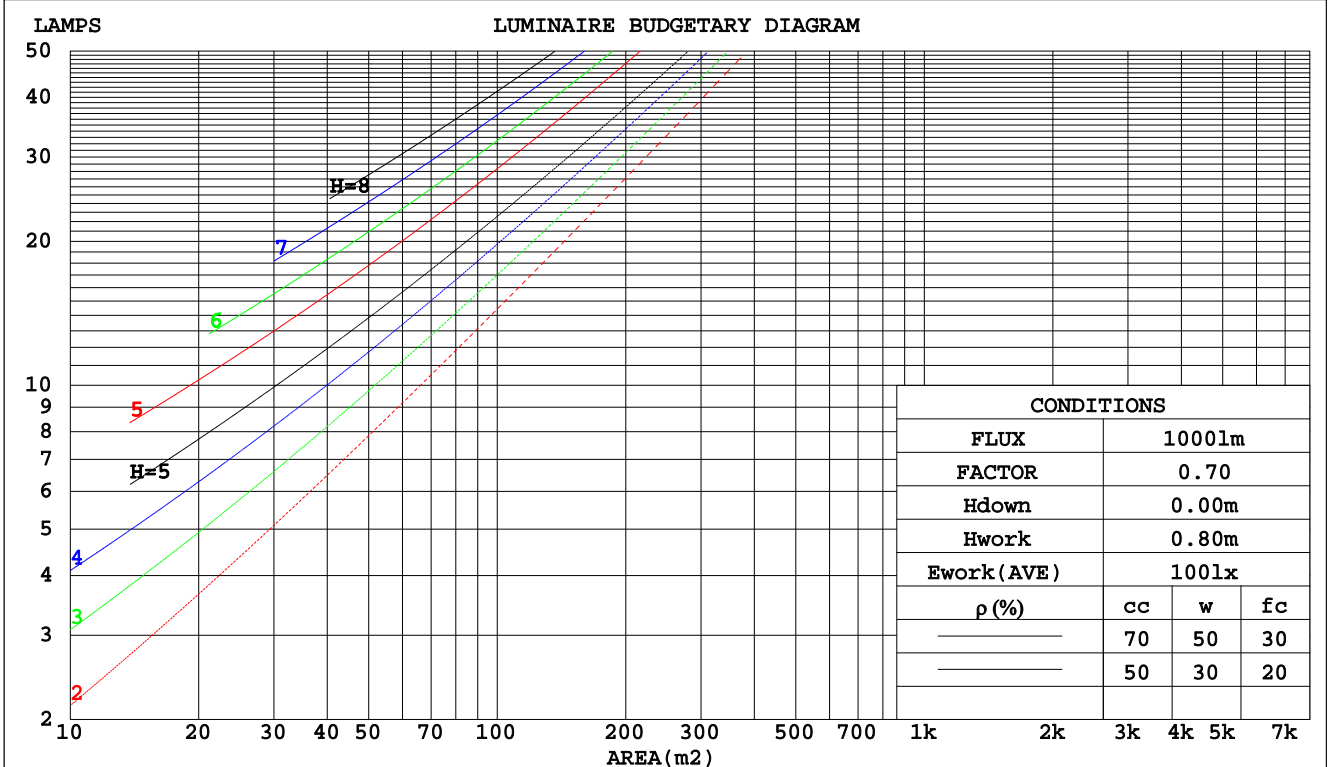
C Range: 0 - 360DEG
 C Interval: 22.5DEG
 Test Speed: MEDIUM
 Temperature:25.3DEG
 Operators:NEIKO
 Test Date:30 August 2023

γ Range: 0 - 130DEG
 γ Interval: 0.5DEG
 Test System:EVERFINE GO-2000A_V1 SYSTEM V2.00.421
 Humidity:65.0%
 Test Distance:9.770m [K=1.0000]
 Remarks:

CU AND LUMINAIRE BUDGETARY ESTIMATE DIAGRAM

Test:U:24.021V I:1.0691A P:25.669W PF:1.0000 Freq:50.00Hz Lamp Flux:3276.11x1 lm		
NAME: WP18W-CC-MS-24V	TYPE:LED	WEIGHT:
SPEC.:	DIM.:	SERIAL No.:BLD20230830A24
MFR.:	SUR.:0.1*0.6	Shielding Angle:

pcc	80%			70%			50%			30%			10%			0
	50%	30%	10%	50%	30%	10%	50%	30%	10%	50%	30%	10%	50%	30%	10%	0
pw																
pfc	20%			20%			20%			20%			20%			0
RCR	RCR:Room Cavity Ratio															
	Coefficients of Utilization(CU)															
0.0	1.17	1.17	1.17	1.14	1.14	1.14	1.07	1.07	1.07	1.02	1.02	1.02	.96	.96	.96	.93
1.0	.00	.95	.90	.97	.92	.88	.91	.88	.84	.86	.83	.80	.81	.79	.77	.74
2.0	.86	.78	.72	.83	.77	.71	.79	.73	.68	.74	.70	.66	.70	.67	.63	.60
3.0	.75	.66	.59	.73	.65	.58	.69	.62	.56	.65	.59	.55	.62	.57	.53	.50
4.0	.66	.57	.50	.64	.56	.49	.61	.54	.48	.58	.52	.46	.55	.50	.45	.43
5.0	.59	.50	.43	.57	.49	.42	.55	.47	.41	.52	.45	.40	.49	.44	.39	.37
6.0	.53	.44	.37	.52	.43	.37	.49	.42	.36	.47	.40	.35	.45	.39	.34	.32
7.0	.48	.39	.33	.47	.38	.32	.45	.37	.32	.43	.36	.31	.41	.35	.30	.28
8.0	.44	.35	.29	.43	.34	.29	.41	.33	.28	.39	.32	.28	.37	.31	.27	.25
9.0	.40	.32	.26	.39	.31	.26	.38	.30	.25	.36	.30	.25	.35	.29	.24	.22
10.0	.37	.29	.24	.36	.29	.23	.35	.28	.23	.33	.27	.23	.32	.26	.22	.20



C Range: 0 - 360DEG
 C Interval: 22.5DEG
 Test Speed: MEDIUM
 Temperature:25.3DEG
 Operators:NEIKO
 Test Date:30 August 2023

γ Range: 0 - 130DEG
 γ Interval: 0.5DEG
 Test System:EVERFINE GO-2000A_V1 SYSTEM V2.00.421
 Humidity:65.0%
 Test Distance:9.770m [K=1.0000]
 Remarks:

WEC AND CCEC

Test:U:24.021V I:1.0691A P:25.669W PF:1.0000 Freq:50.00Hz Lamp Flux:3276.11x1 lm		
NAME: WP18W-CC-MS-24V	TYPE:LED	WEIGHT:
SPEC.:	DIM.:	SERIAL No.:BLD20230830A24
MFR.:	SUR.:0.1*0.6	Shielding Angle:

ρcc	80%			70%			50%			30%			10%			0
ρw	50%	30%	10%	50%	30%	10%	50%	30%	10%	50%	30%	10%	50%	30%	10%	0
ρfc	20%			20%			20%			20%			20%			0
RCR	RCR:Room Cavity Ratio						Wall Exitance Coefficients(WEC)									
0.0																
1.0	.360	.205	.065	.351	.200	.064	.333	.191	.061	.318	.183	.059	.303	.176	.057	
2.0	.320	.175	.054	.311	.172	.053	.296	.165	.051	.282	.158	.049	.269	.152	.048	
3.0	.288	.153	.046	.280	.150	.045	.267	.145	.044	.254	.139	.043	.242	.134	.041	
4.0	.261	.136	.040	.255	.133	.039	.242	.128	.038	.231	.124	.037	.220	.120	.036	
5.0	.239	.122	.035	.233	.120	.035	.222	.116	.034	.212	.112	.033	.202	.108	.032	
6.0	.220	.110	.032	.214	.108	.031	.204	.105	.030	.195	.101	.030	.186	.098	.029	
7.0	.203	.101	.028	.199	.099	.028	.190	.096	.028	.181	.093	.027	.173	.090	.026	
8.0	.189	.092	.026	.185	.091	.026	.177	.088	.025	.169	.086	.025	.162	.083	.024	
9.0	.177	.085	.024	.173	.084	.024	.165	.082	.023	.158	.079	.023	.152	.077	.022	
10.0	.166	.079	.022	.162	.078	.022	.155	.076	.021	.149	.074	.021	.143	.072	.021	

ρcc	80%			70%			50%			30%			10%			0
ρw	50%	30%	10%	50%	30%	10%	50%	30%	10%	50%	30%	10%	50%	30%	10%	0
ρfc	20%			20%			20%			20%			20%			0
RCR	RCR:Room Cavity Ratio						Ceiling Cavity Exitance Coefficients(CCEC)									
0.0	.240	.240	.240	.205	.205	.205	.140	.140	.140	.080	.080	.080	.026	.026	.026	
1.0	.234	.206	.180	.200	.176	.155	.137	.121	.107	.079	.070	.062	.025	.023	.020	
2.0	.226	.182	.145	.194	.157	.125	.133	.108	.087	.077	.063	.051	.025	.020	.017	
3.0	.218	.165	.122	.187	.142	.106	.129	.099	.074	.074	.058	.044	.024	.019	.014	
4.0	.211	.152	.107	.181	.131	.093	.124	.092	.066	.072	.054	.039	.023	.017	.013	
5.0	.203	.142	.097	.174	.123	.084	.120	.086	.060	.070	.050	.035	.022	.016	.012	
6.0	.195	.134	.089	.168	.116	.078	.116	.081	.055	.067	.048	.033	.022	.016	.011	
7.0	.188	.127	.084	.162	.110	.073	.112	.077	.052	.065	.045	.031	.021	.015	.010	
8.0	.182	.121	.080	.156	.105	.069	.108	.074	.049	.063	.044	.029	.020	.014	.010	
9.0	.175	.116	.076	.151	.101	.067	.105	.071	.047	.061	.042	.028	.020	.014	.009	
10.0	.170	.112	.074	.146	.097	.064	.101	.068	.046	.059	.040	.027	.019	.013	.009	

C Range: 0 - 360DEG
 C Interval: 22.5DEG
 Test Speed: MEDIUM
 Temperature:25.3DEG
 Operators:NEIKO
 Test Date:30 August 2023

γ Range: 0 - 130DEG
 γ Interval: 0.5DEG
 Test System:EVERFINE GO-2000A_V1 SYSTEM V2.00.421
 Humidity:65.0%
 Test Distance:9.770m [K=1.0000]
 Remarks:

UGR(Unified Glare Rating) Table

Test:U:24.021V I:1.0691A P:25.669W PF:1.0000 Freq:50.00Hz Lamp Flux:3276.11x1 lm		
NAME: WP18W-CC-MS-24V	TYPE:LED	WEIGHT:
SPEC.:	DIM.:	SERIAL No.:BLD20230830A24
MFR.:	SUR.:0.1*0.6	Shielding Angle:

ceiling/cavity	0.7	0.7	0.5	0.5	0.3	0.7	0.7	0.5	0.5	0.3
walls	0.5	0.3	0.5	0.3	0.3	0.5	0.3	0.5	0.3	0.3
working plane	0.2	0.2	0.2	0.2	0.2	0.2	0.2	0.2	0.2	0.2
Room dimensions	Viewed crosswise					Viewed endwise				
x = 2H y = 2H	22.4	23.9	22.7	24.2	24.5	21.1	22.6	21.5	22.9	23.2
3H	24.6	25.9	24.9	26.3	26.7	22.6	24.0	23.0	24.3	24.7
4H	25.7	27.0	26.1	27.4	27.8	23.2	24.5	23.6	24.9	25.3
6H	26.9	28.2	27.4	28.6	29.0	23.7	24.9	24.1	25.3	25.7
8H	27.6	28.8	28.0	29.2	29.6	23.9	25.1	24.3	25.5	25.9
12H	28.3	29.5	28.8	29.9	30.4	24.0	25.1	24.4	25.6	26.0
4H 2H	22.9	24.2	23.3	24.6	25.0	22.0	23.3	22.4	23.6	24.0
3H	25.3	26.5	25.8	26.9	27.4	23.7	24.8	24.1	25.2	25.7
4H	26.7	27.8	27.2	28.2	28.7	24.4	25.5	24.9	25.9	26.4
6H	28.1	29.1	28.6	29.6	30.1	25.1	26.0	25.6	26.5	27.0
8H	28.9	29.8	29.4	30.3	30.8	25.3	26.2	25.9	26.7	27.2
12H	29.8	30.6	30.3	31.1	31.7	25.5	26.4	26.1	26.9	27.4
8H 4H	27.0	27.9	27.5	28.4	28.9	25.1	26.0	25.6	26.5	27.0
6H	28.7	29.5	29.3	30.0	30.6	26.1	26.8	26.6	27.3	27.9
8H	29.7	30.4	30.3	30.9	31.5	26.5	27.2	27.0	27.7	28.3
12H	30.9	31.4	31.4	32.0	32.6	26.8	27.4	27.4	28.0	28.6
12H 4H	27.0	27.9	27.6	28.4	28.9	25.3	26.1	25.9	26.7	27.2
6H	28.8	29.5	29.4	30.1	30.6	26.4	27.1	27.0	27.6	28.2
8H	29.9	30.5	30.5	31.1	31.7	27.0	27.5	27.5	28.1	28.7
Variations with the observer position at spacings:										
S = 1.0H	+ 0.1 / - 0.1					+ 0.1 / - 0.2				
1.5H	+ 0.2 / - 0.3					+ 0.2 / - 0.3				
2.0H	+ 0.2 / - 0.3					+ 0.1 / - 0.3				

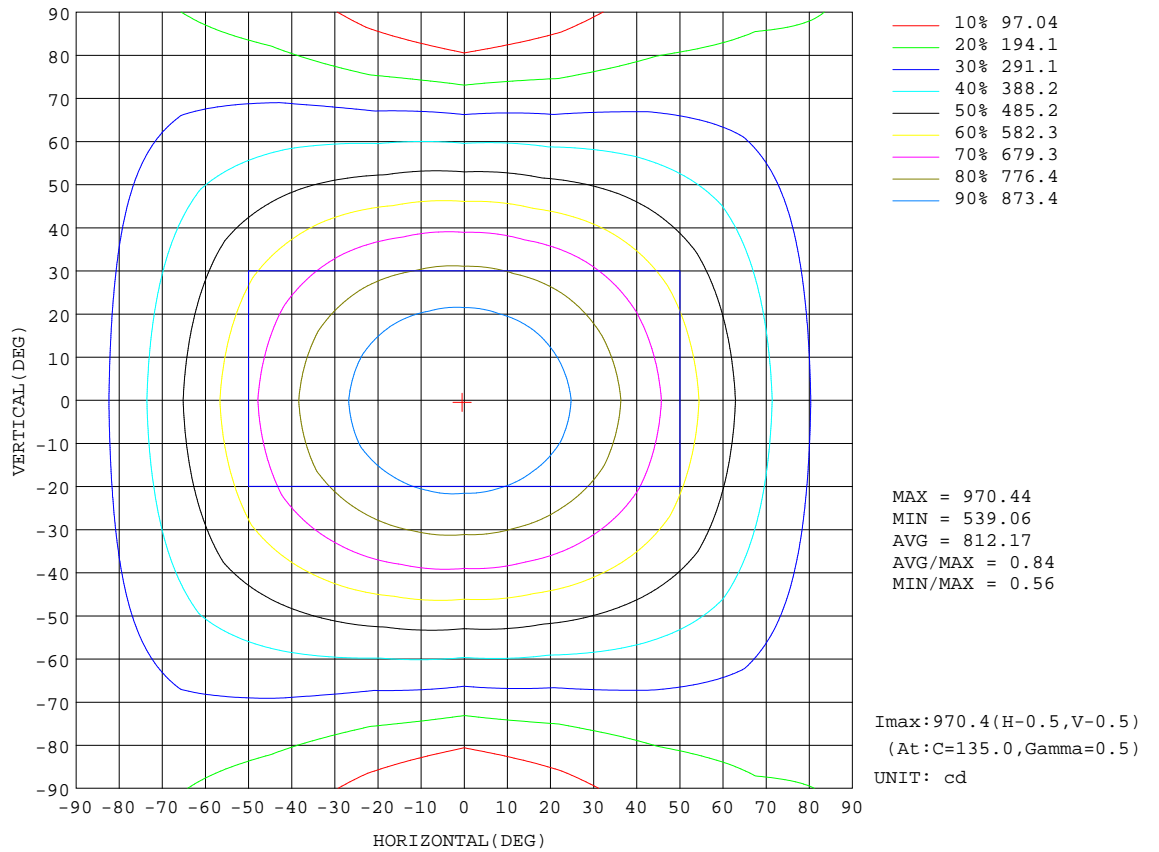
CIE Pub.117, 3276 lm Total Lamp Luminous Flux Corrected (8log(F/F0) = 4.1)
 Area: 0.06 m2

C Range: 0 - 360DEG
 C Interval: 22.5DEG
 Test Speed: MEDIUM
 Temperature:25.3DEG
 Operators:NEIKO
 Test Date:30 August 2023

γ Range: 0 - 130DEG
 γ Interval: 0.5DEG
 Test System:EVERFINE GO-2000A_V1 SYSTEM V2.00.421
 Humidity:65.0%
 Test Distance:9.770m [K=1.0000]
 Remarks:

ISOCANDELA DIAGRAM

Test:U:24.021V I:1.0691A P:25.669W PF:1.0000 Freq:50.00Hz Lamp Flux:3276.11x1 lm		
NAME: WP18W-CC-MS-24V	TYPE:LED	WEIGHT:
SPEC.:	DIM.:	SERIAL No.:BLD20230830A24
MFR.:	SUR.:0.1*0.6	Shielding Angle:

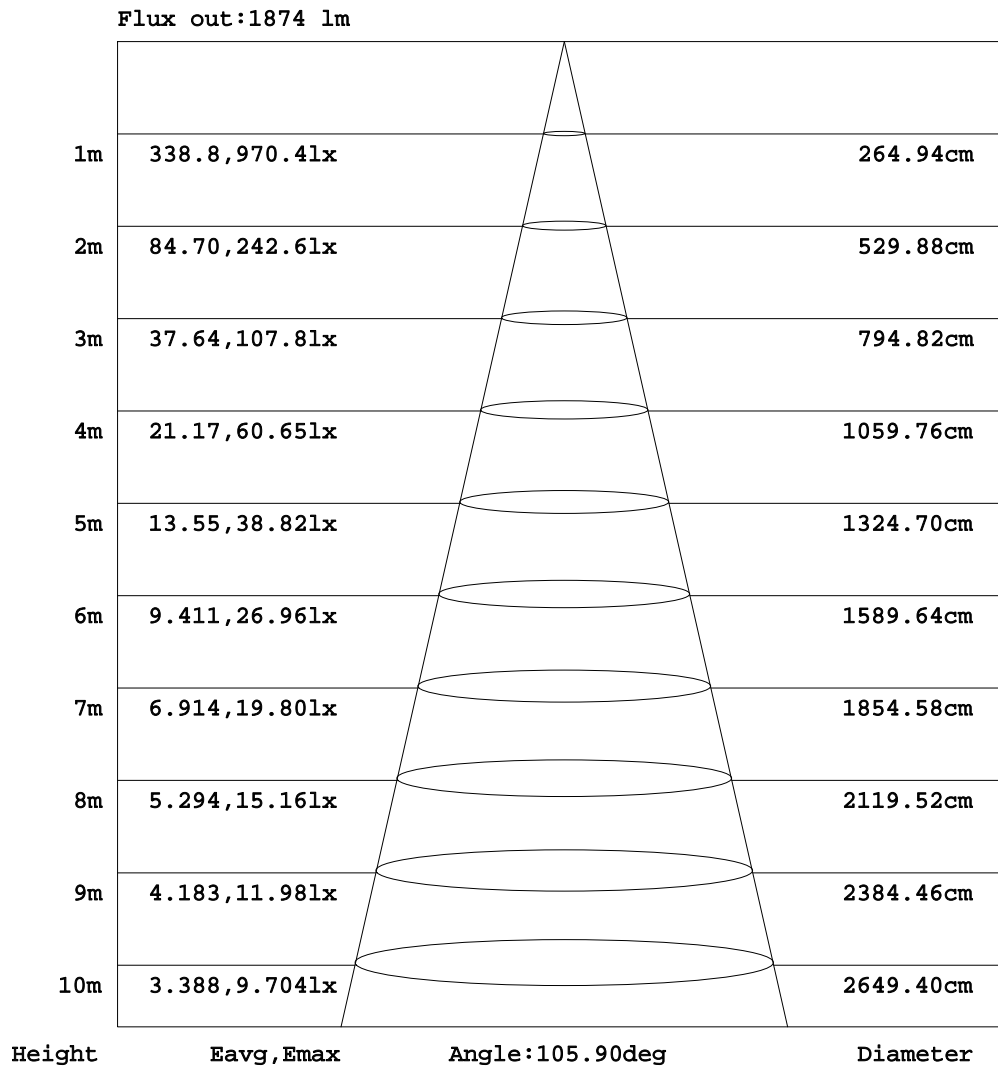


C Range: 0 - 360DEG
 C Interval: 22.5DEG
 Test Speed: MEDIUM
 Temperature: 25.3DEG
 Operators: NEIKO
 Test Date: 30 August 2023

γ Range: 0 - 130DEG
 γ Interval: 0.5DEG
 Test System: EVERFINE GO-2000A_V1 SYSTEM V2.00.421
 Humidity: 65.0%
 Test Distance: 9.770m [K=1.0000]
 Remarks:

AAI Figure

Test:U:24.021V I:1.0691A P:25.669W PF:1.0000 Freq:50.00Hz Lamp Flux:3276.11x1 lm		
NAME: WP18W-CC-MS-24V	TYPE:LED	WEIGHT:
SPEC.:	DIM.:	SERIAL No.:BLD20230830A24
MFR.:	SUR.:0.1*0.6	Shielding Angle:



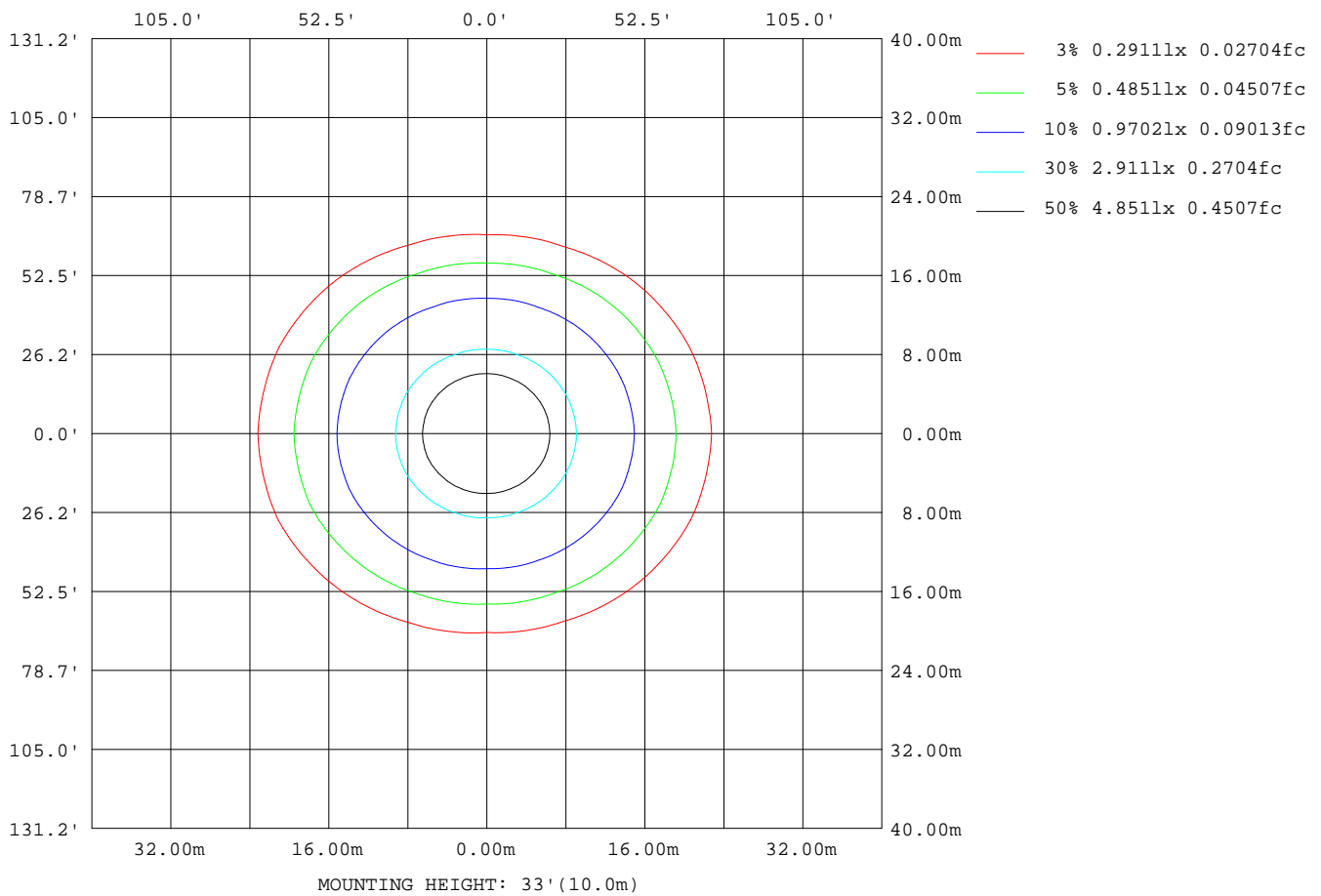
Note:The Curves indicate the illuminated area and the average illumination when the luminaire is at different distance.

C Range: 0 - 360DEG
 C Interval: 22.5DEG
 Test Speed: MEDIUM
 Temperature:25.3DEG
 Operators:NEIKO
 Test Date:30 August 2023

γ Range: 0 - 130DEG
 γ Interval: 0.5DEG
 Test System:EVERFINE GO-2000A_V1 SYSTEM V2.00.421
 Humidity:65.0%
 Test Distance:9.770m [K=1.0000]
 Remarks:

ISOLUX DIAGRAM

Test:U:24.021V I:1.0691A P:25.669W PF:1.0000 Freq:50.00Hz Lamp Flux:3276.11x1 lm		
NAME: WP18W-CC-MS-24V	TYPE:LED	WEIGHT:
SPEC.:	DIM.:	SERIAL No.:BLD20230830A24
MFR.:	SUR.:0.1*0.6	Shielding Angle:



C Range: 0 - 360DEG
 C Interval: 22.5DEG
 Test Speed: MEDIUM
 Temperature:25.3DEG
 Operators:NEIKO
 Test Date:30 August 2023

γ Range: 0 - 130DEG
 γ Interval: 0.5DEG
 Test System:EVERFINE GO-2000A_V1 SYSTEM V2.00.421
 Humidity:65.0%
 Test Distance:9.770m [K=1.0000]
 Remarks:

LED Avg.L Report

Test:U:24.021V I:1.0691A P:25.669W PF:1.0000 Freq:50.00Hz Lamp Flux:3276.11x1 lm		
NAME: WP18W-CC-MS-24V	TYPE:LED	WEIGHT:
SPEC.:	DIM.:	SERIAL No.:BLD20230830A24
MFR.:	SUR.:0.1*0.6	Shielding Angle:

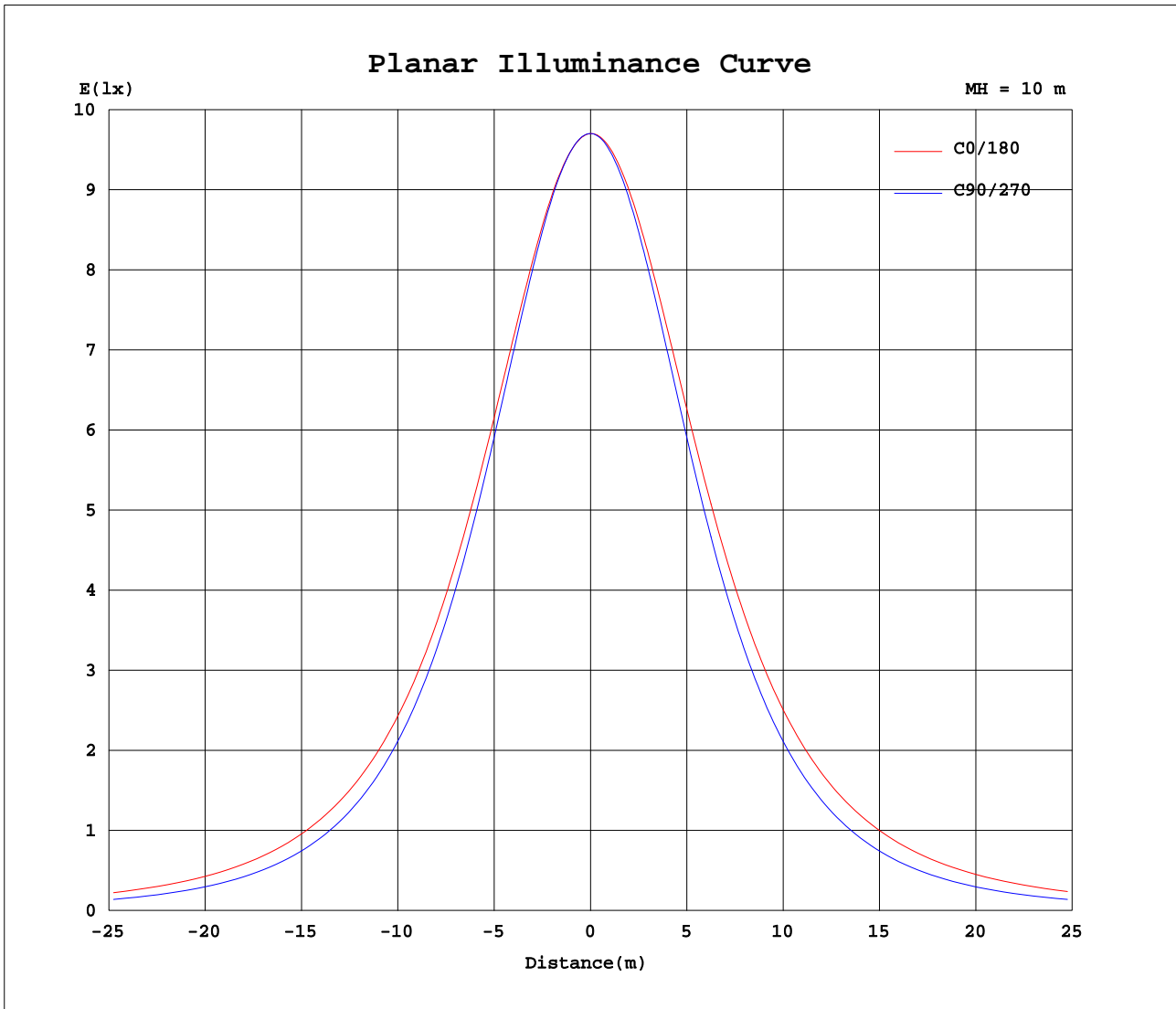
AvgL	cd/m2
L_0~180(65)av	18690
L_0~180(75)av	23189
L_0~180(85)av	48663
L_90~270(65)av	12213
L_90~270(75)av	10809
L_90~270(85)av	9962
L_45(65)av	15670
L_45(75)av	18115
L_45(85)av	34839

Standard: GB/T 29293-2012

C Range: 0 - 360DEG
 C Interval: 22.5DEG
 Test Speed: MEDIUM
 Temperature:25.3DEG
 Operators:NEIKO
 Test Date:30 August 2023

γ Range: 0 - 130DEG
 γ Interval: 0.5DEG
 Test System:EVERFINE GO-2000A_V1 SYSTEM V2.00.421
 Humidity:65.0%
 Test Distance:9.770m [K=1.0000]
 Remarks:

Planar Illuminance Curve



C Range: 0 - 360DEG
 C Interval: 22.5DEG
 Test Speed: MEDIUM
 Temperature: 25.3DEG
 Operators: NEIKO
 Test Date: 30 August 2023

γ Range: 0 - 130DEG
 γ Interval: 0.5DEG
 Test System: EVERFINE GO-2000A_V1 SYSTEM V2.00.421
 Humidity: 65.0%
 Test Distance: 9.770m [K=1.0000]
 Remarks:

LUMINOUS DISTRIBUTION INTENSITY DATA

Test:U:24.021V I:1.0691A P:25.669W PF:1.0000 Freq:50.00Hz Lamp Flux:3276.11x1 lm		
NAME: WP18W-CC-MS-24V	TYPE:LED	WEIGHT:
SPEC.:	DIM.:	SERIAL No.:BLD20230830A24
MFR.:	SUR.:0.1*0.6	Shielding Angle:

Table--1

UNIT: cd

C(DEG) γ (DEG)	0	22.5	45	67.5	90	112.5	135	157.5	180	202.5	225	247.5	270	292.5	315	337.5			
0	970	970	970	970	970	970	970	970	970	970	970	970	970	970	970	970			
5	965	965	964	965	965	966	967	968	968	967	966	965	965	964	964	964			
10	952	952	950	949	949	952	955	958	958	956	954	950	949	948	950	950			
15	932	931	926	924	923	927	933	940	940	938	932	925	922	921	926	928			
20	905	902	894	889	887	893	904	915	916	912	903	891	886	886	893	899			
25	872	868	855	846	842	851	866	883	886	879	865	848	841	842	854	864			
30	833	827	809	795	789	801	822	844	849	840	821	798	788	791	808	822			
35	789	781	757	738	730	745	772	800	807	796	770	741	729	733	756	776			
40	740	730	701	676	666	684	717	752	760	746	715	680	665	671	699	724			
45	687	675	641	610	598	619	658	698	709	693	657	614	597	605	639	669			
50	632	618	578	542	528	551	596	643	656	637	595	547	527	537	576	612			
55	576	560	515	473	456	482	532	585	601	580	531	478	455	467	512	553			
60	518	501	452	403	383	412	469	527	544	522	469	408	382	398	449	495			
65	461	442	390	335	310	343	407	469	487	463	406	340	309	330	387	436			
70	404	385	331	269	238	276	347	410	429	406	346	274	237	264	328	379			
75	348	330	275	207	168	214	290	354	372	349	289	211	167	202	271	324			
80	295	277	223	153	104	158	237	300	317	295	236	156	103	148	220	271			
85	245	228	177	107	52.5	111	189	248	264	244	189	110	51.7	102	174	222			
90	200	185	137	71.9	24.0	75.3	148	202	217	198	148	74.5	23.9	68.6	135	180			
95	161	148	105	47.4	18.5	49.8	113	162	176	159	113	49.6	18.6	44.9	102	143			
100	128	116	77.5	30.5	15.1	32.0	84.3	128	140	125	84.4	32.0	15.1	28.6	75.4	112			
105	100	88.8	55.7	18.9	12.2	19.7	60.9	98.3	109	96.2	60.9	19.9	12.2	17.6	53.7	85.6			
110	75.8	65.9	38.1	11.5	9.86	11.7	42.0	73.6	83.4	71.8	42.0	12.0	9.81	10.8	36.6	63.1			
115	55.2	47.0	24.4	8.78	7.95	8.80	27.1	52.9	61.1	51.4	27.1	8.93	7.88	8.42	23.0	44.6			
120	38.3	31.4	14.0	7.15	6.47	7.11	15.6	35.9	42.7	34.7	15.6	7.26	6.35	6.87	12.7	29.4			
125	24.4	18.9	7.78	5.95	5.37	5.89	8.27	22.1	27.4	21.2	8.14	6.02	5.26	5.71	7.05	17.3			
130	13.5	9.88	6.39	5.16	4.59	5.07	6.56	11.7	15.3	11.1	6.54	5.13	4.57	4.88	5.99	8.93			
135	0.00	0.00	0.00	0.00	0.00	0.00	0.00	0.00	0.00	0.00	0.00	0.00	0.00	0.00	0.00	0.00			
140	0.00	0.00	0.00	0.00	0.00	0.00	0.00	0.00	0.00	0.00	0.00	0.00	0.00	0.00	0.00	0.00			
145	0.00	0.00	0.00	0.00	0.00	0.00	0.00	0.00	0.00	0.00	0.00	0.00	0.00	0.00	0.00	0.00			
150	0.00	0.00	0.00	0.00	0.00	0.00	0.00	0.00	0.00	0.00	0.00	0.00	0.00	0.00	0.00	0.00			
155	0.00	0.00	0.00	0.00	0.00	0.00	0.00	0.00	0.00	0.00	0.00	0.00	0.00	0.00	0.00	0.00			
160	0.00	0.00	0.00	0.00	0.00	0.00	0.00	0.00	0.00	0.00	0.00	0.00	0.00	0.00	0.00	0.00			
165	0.00	0.00	0.00	0.00	0.00	0.00	0.00	0.00	0.00	0.00	0.00	0.00	0.00	0.00	0.00	0.00			
170	0.00	0.00	0.00	0.00	0.00	0.00	0.00	0.00	0.00	0.00	0.00	0.00	0.00	0.00	0.00	0.00			
175	0.00	0.00	0.00	0.00	0.00	0.00	0.00	0.00	0.00	0.00	0.00	0.00	0.00	0.00	0.00	0.00			
180	0.00	0.00	0.00	0.00	0.00	0.00	0.00	0.00	0.00	0.00	0.00	0.00	0.00	0.00	0.00	0.00			

C Range: 0 - 360DEG
 C Interval: 22.5DEG
 Test Speed: MEDIUM
 Temperature:25.3DEG
 Operators:NEIKO
 Test Date:30 August 2023

γ Range: 0 - 130DEG
 γ Interval: 0.5DEG
 Test System:EVERFINE GO-2000A_V1 SYSTEM V2.00.421
 Humidity:65.0%
 Test Distance:9.770m [K=1.0000]
 Remarks: