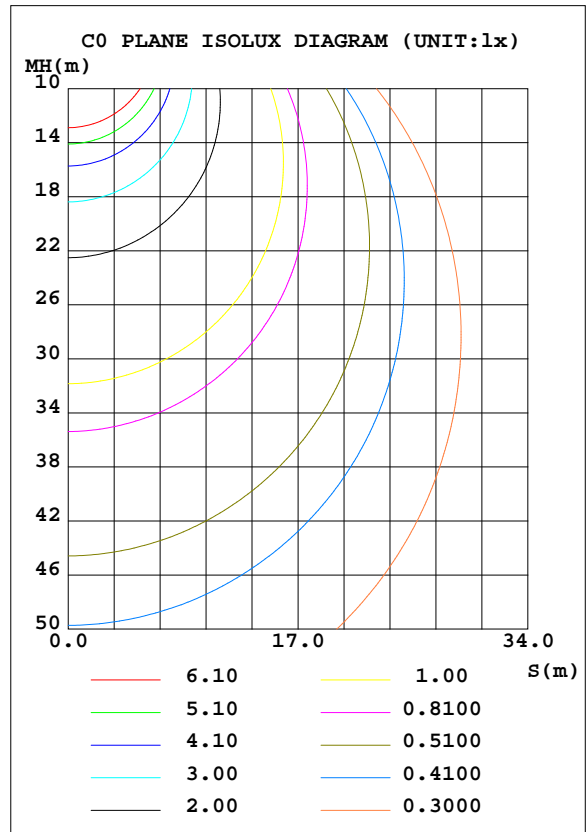
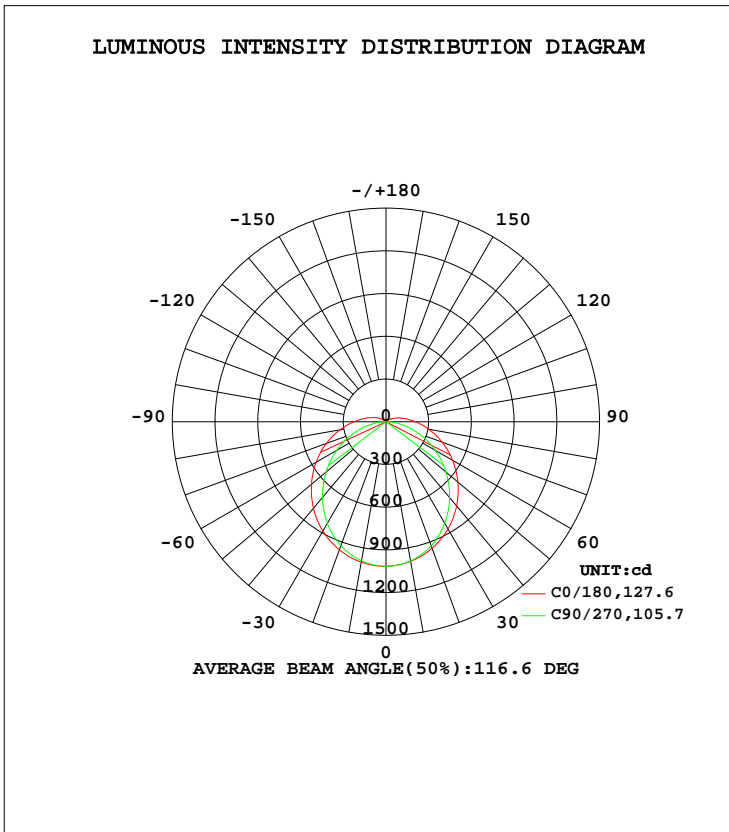


LUMINAIRE PHOTOMETRIC TEST REPORT

Test:U:24.022V I:1.0178A P:24.438W PF:1.0000 Freq:50.00Hz Lamp Flux:3413.61x1 lm		
NAME: WP18W-CC-MS-24V	TYPE:LED	WEIGHT:
SPEC.:	DIM.:	SERIAL No.:BLD20230830A23
MFR.:	SUR.:0.1*0.6	Shielding Angle:

DATA OF LAMP		PHOTOMETRIC DATA Eff: 139.69 lm/W			
MODEL		I _{max} (cd)	1015	S/MH(C0/180)	1.30
NOMINAL POWER(W)		LOR(%)	100.0	S/MH(C90/270)	1.21
RATED VOLTAGE(V)		TOTAL FLUX(lm)	3413.6	η UP, DN(C0-180)	3.2,46.8
NOMINAL FLUX(lm)	3413.61	CIE CLASS	DIRECT	η UP, DN(C180-360)	3.2,46.7
LAMPS INSIDE	1	η up(%)	6.5	CIBSE SHR NOM	1.25
TEST VOLTAGE(V)		η down(%)	93.5	CIBSE SHR MAX	1.35



C Range: 0 - 360DEG
 C Interval: 22.5DEG
 Test Speed: MEDIUM
 Temperature:25.3DEG
 Operators:NEIKO
 Test Date:30 August 2023

γ Range: 0 - 130DEG
 γ Interval: 0.5DEG
 Test System:EVERFINE GO-2000A_V1 SYSTEM V2.00.421
 Humidity:65.0%
 Test Distance:9.770m [K=1.0000]
 Remarks:

ZONAL FLUX DIAGRAM

ZONAL FLUX DIAGRAM:

γ	C0	C45	C90	C135	C180	C225	C270	C315	γ	Φ zone	Φ total	%lum,lamp
10	995.9	993.5	992.7	997.7	1001	997.1	991.9	992.7	0- 10	95.92	95.92	2.81,2.81
20	946.0	935.0	927.0	944.1	957.1	943.0	925.8	933.5	10- 20	274.1	370.0	10.8,10.8
30	870.4	845.2	824.5	858.0	886.6	856.5	823.0	843.0	20- 30	414.0	784.0	23,23
40	771.8	731.5	695.4	747.3	793.0	745.8	693.6	729.0	30- 40	498.8	1283	37.6,37.6
50	659.1	603.4	550.7	620.8	683.4	619.4	548.9	600.2	40- 50	521.5	1804	52.9,52.9
60	539.7	470.4	399.4	488.2	566.2	487.4	397.2	467.9	50- 60	486.8	2291	67.1,67.1
70	420.0	344.2	248.5	360.9	445.4	359.5	246.1	340.3	60- 70	407.0	2698	79,79
80	306.1	232.3	108.7	246.2	328.7	245.0	107.0	228.3	70- 80	300.8	2999	87.9,87.9
90	207.6	142.6	25.21	153.3	225.0	152.9	24.46	139.7	80- 90	193.9	3193	93.5,93.5
100	133.1	80.35	15.78	87.43	145.2	87.19	15.49	78.15	90-100	115.0	3308	96.9,96.9
110	78.61	39.52	10.28	43.62	86.39	43.45	10.07	37.84	100-110	63.17	3371	98.8,98.8
120	39.71	14.46	6.754	16.28	44.24	16.10	6.551	13.20	110-120	30.43	3401	99.6,99.6
130	13.94	6.624	4.775	6.815	15.83	6.752	4.737	6.222	120-130	11.98	3413	100,100
140	0	0	0	0	0	0	0	0	130-140	0.1697	3414	100,100
150	0	0	0	0	0	0	0	0	140-150	0	3414	100,100
160	0	0	0	0	0	0	0	0	150-160	0	3414	100,100
170	0	0	0	0	0	0	0	0	160-170	0	3414	100,100
180	0	0	0	0	0	0	0	0	170-180	0	3414	100,100
DEG	LUMINOUS INTENSITY:cd									UNIT:lm		

Conical surface Flux(90deg): 1544.5 lm

%lum = 45.2%
 %lamp = 45.2%

Conical surface Flux(120deg): 2291.1 lm

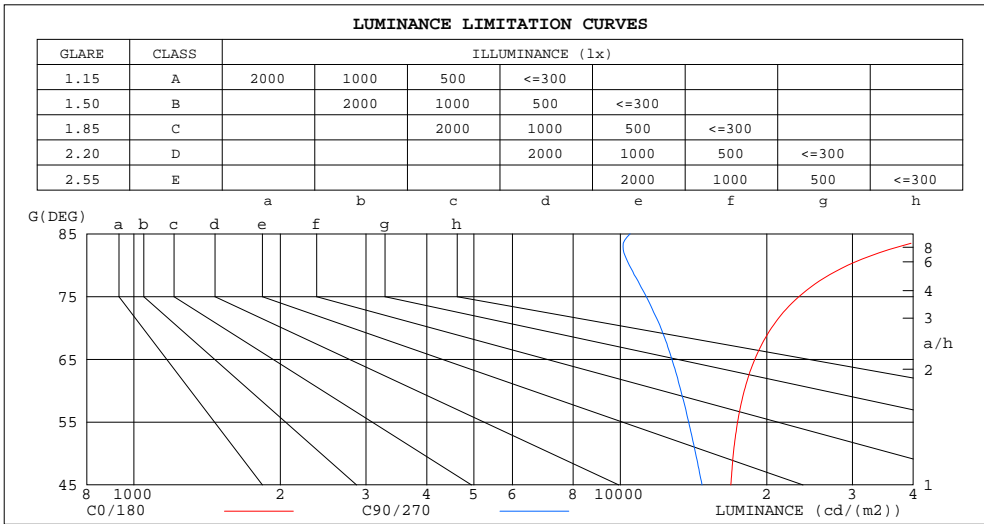
%lum = 67.1%
 %lamp = 67.1%

C Range: 0 - 360DEG
 C Interval: 22.5DEG
 Test Speed: MEDIUM
 Temperature:25.3DEG
 Operators:NEIKO
 Test Date:30 August 2023

γ Range: 0 - 130DEG
 γ Interval: 0.5DEG
 Test System:EVERFINE GO-2000A_V1 SYSTEM V2.00.421
 Humidity:65.0%
 Test Distance:9.770m [K=1.0000]
 Remarks:

LUMINANCE LIMITATION CURVES

Test:U:24.022V I:1.0178A P:24.438W PF:1.0000 Freq:50.00Hz Lamp Flux:3413.61x1 lm		
NAME: WP18W-CC-MS-24V	TYPE:LED	WEIGHT:
SPEC.:	DIM.:	SERIAL No.:BLD20230830A23
MFR.:	SUR.:0.1*0.6	Shielding Angle:



LUMINANCE cd/(m2)		
G (DEG)	C0/180	C90/270
85	48527	10475
80	29360	10435
75	23290	11306
70	20450	12110
65	18897	12763
60	17977	13316
55	17421	13823
50	17076	14281
45	16875	14721

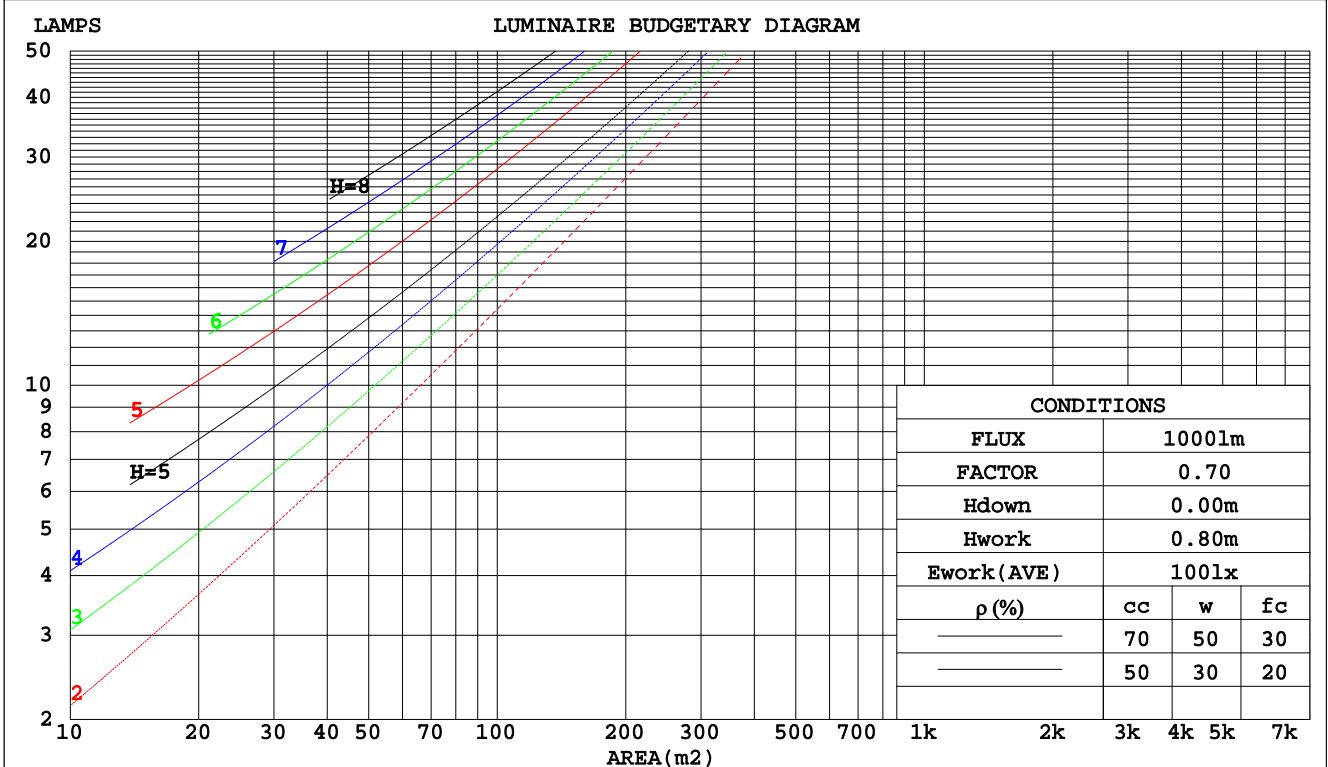
C Range: 0 - 360DEG
 C Interval: 22.5DEG
 Test Speed: MEDIUM
 Temperature: 25.3DEG
 Operators: NEIKO
 Test Date: 30 August 2023

γ Range: 0 - 130DEG
 γ Interval: 0.5DEG
 Test System: EVERFINE GO-2000A_V1 SYSTEM V2.00.421
 Humidity: 65.0%
 Test Distance: 9.770m [K=1.0000]
 Remarks:

CU AND LUMINAIRE BUDGETARY ESTIMATE DIAGRAM

Test:U:24.022V I:1.0178A P:24.438W PF:1.0000 Freq:50.00Hz Lamp Flux:3413.61x1 lm		
NAME: WP18W-CC-MS-24V	TYPE:LED	WEIGHT:
SPEC.:	DIM.:	SERIAL No.:BLD20230830A23
MFR.:	SUR.:0.1*0.6	Shielding Angle:

pcc	80%			70%			50%			30%			10%			0
	50%	30%	10%	50%	30%	10%	50%	30%	10%	50%	30%	10%	50%	30%	10%	0
pw																
pfc	20%			20%			20%			20%			20%			0
RCR	RCR:Room Cavity Ratio															
	Coefficients of Utilization(CU)															
0.0	1.18	1.18	1.18	1.14	1.14	1.14	1.08	1.08	1.08	1.02	1.02	1.02	.96	.96	.96	.94
1.0	.00	.95	.90	.97	.92	.88	.91	.88	.84	.86	.83	.80	.82	.79	.77	.74
2.0	.86	.78	.72	.84	.77	.71	.79	.73	.68	.75	.70	.66	.71	.67	.63	.61
3.0	.75	.66	.59	.73	.65	.58	.69	.62	.56	.65	.60	.55	.62	.57	.53	.50
4.0	.66	.57	.50	.64	.56	.49	.61	.54	.48	.58	.52	.46	.55	.50	.45	.43
5.0	.59	.50	.43	.57	.49	.42	.55	.47	.41	.52	.45	.40	.49	.44	.39	.37
6.0	.53	.44	.37	.52	.43	.37	.49	.42	.36	.47	.40	.35	.45	.39	.34	.32
7.0	.48	.39	.33	.47	.38	.32	.45	.37	.32	.43	.36	.31	.41	.35	.30	.28
8.0	.44	.35	.29	.43	.35	.29	.41	.33	.28	.39	.32	.28	.37	.32	.27	.25
9.0	.40	.32	.26	.39	.31	.26	.38	.30	.25	.36	.30	.25	.35	.29	.24	.22
10.0	.37	.29	.24	.36	.29	.23	.35	.28	.23	.33	.27	.23	.32	.26	.22	.20



C Range: 0 - 360DEG
 C Interval: 22.5DEG
 Test Speed: MEDIUM
 Temperature:25.3DEG
 Operators:NEIKO
 Test Date:30 August 2023

γ Range: 0 - 130DEG
 γ Interval: 0.5DEG
 Test System:EVERFINE GO-2000A_V1 SYSTEM V2.00.421
 Humidity:65.0%
 Test Distance:9.770m [K=1.0000]
 Remarks:

WEC AND CCEC

Test:U:24.022V I:1.0178A P:24.438W PF:1.0000 Freq:50.00Hz Lamp Flux:3413.61x1 lm		
NAME: WP18W-CC-MS-24V	TYPE:LED	WEIGHT:
SPEC.:	DIM.:	SERIAL No.:BLD20230830A23
MFR.:	SUR.:0.1*0.6	Shielding Angle:

ρcc	80%			70%			50%			30%			10%			0
ρw	50%	30%	10%	50%	30%	10%	50%	30%	10%	50%	30%	10%	50%	30%	10%	0
ρfc	20%			20%			20%			20%			20%			0
RCR	RCR:Room Cavity Ratio						Wall Exitance Coefficients(WEC)									
0.0																
1.0	.359	.204	.065	.350	.200	.063	.333	.191	.061	.317	.183	.059	.303	.175	.057	
2.0	.319	.175	.054	.311	.171	.053	.296	.164	.051	.282	.158	.049	.269	.152	.048	
3.0	.287	.153	.046	.280	.150	.045	.266	.144	.044	.254	.139	.043	.242	.134	.041	
4.0	.261	.136	.040	.254	.133	.039	.242	.128	.038	.231	.124	.037	.220	.120	.036	
5.0	.239	.122	.035	.233	.120	.035	.222	.115	.034	.211	.112	.033	.202	.108	.032	
6.0	.220	.110	.032	.214	.108	.031	.204	.105	.030	.195	.101	.030	.186	.098	.029	
7.0	.203	.100	.028	.198	.099	.028	.189	.096	.028	.181	.093	.027	.173	.090	.026	
8.0	.189	.092	.026	.185	.091	.026	.177	.088	.025	.169	.086	.025	.162	.083	.024	
9.0	.176	.085	.024	.173	.084	.024	.165	.082	.023	.158	.079	.023	.152	.077	.022	
10.0	.165	.079	.022	.162	.078	.022	.155	.076	.021	.149	.074	.021	.143	.072	.021	

ρcc	80%			70%			50%			30%			10%			0
ρw	50%	30%	10%	50%	30%	10%	50%	30%	10%	50%	30%	10%	50%	30%	10%	0
ρfc	20%			20%			20%			20%			20%			0
RCR	RCR:Room Cavity Ratio						Ceiling Cavity Exitance Coefficients(CCEC)									
0.0	.240	.240	.240	.205	.205	.205	.140	.140	.140	.080	.080	.080	.026	.026	.026	
1.0	.233	.205	.180	.200	.176	.155	.137	.121	.107	.079	.070	.062	.025	.023	.020	
2.0	.226	.182	.145	.194	.156	.125	.133	.108	.087	.076	.063	.051	.025	.020	.017	
3.0	.218	.165	.122	.187	.142	.106	.128	.099	.074	.074	.058	.044	.024	.019	.014	
4.0	.210	.152	.107	.180	.131	.093	.124	.091	.065	.072	.054	.039	.023	.017	.013	
5.0	.203	.142	.097	.174	.123	.084	.120	.086	.059	.069	.050	.035	.022	.016	.012	
6.0	.195	.133	.089	.168	.116	.078	.116	.081	.055	.067	.048	.033	.022	.016	.011	
7.0	.188	.127	.084	.162	.110	.073	.112	.077	.052	.065	.045	.031	.021	.015	.010	
8.0	.181	.121	.079	.156	.105	.069	.108	.074	.049	.063	.043	.029	.020	.014	.010	
9.0	.175	.116	.076	.151	.101	.066	.105	.071	.047	.061	.042	.028	.020	.014	.009	
10.0	.169	.112	.073	.146	.097	.064	.101	.068	.046	.059	.040	.027	.019	.013	.009	

C Range: 0 - 360DEG
 C Interval: 22.5DEG
 Test Speed: MEDIUM
 Temperature:25.3DEG
 Operators:NEIKO
 Test Date:30 August 2023

γ Range: 0 - 130DEG
 γ Interval: 0.5DEG
 Test System:EVERFINE GO-2000A_V1 SYSTEM V2.00.421
 Humidity:65.0%
 Test Distance:9.770m [K=1.0000]
 Remarks:

UGR(Unified Glare Rating) Table

Test:U:24.022V I:1.0178A P:24.438W PF:1.0000 Freq:50.00Hz Lamp Flux:3413.61x1 lm		
NAME: WP18W-CC-MS-24V	TYPE:LED	WEIGHT:
SPEC.:	DIM.:	SERIAL No.:BLD20230830A23
MFR.:	SUR.:0.1*0.6	Shielding Angle:

ceiling/cavity	0.7	0.7	0.5	0.5	0.3	0.7	0.7	0.5	0.5	0.3
walls	0.5	0.3	0.5	0.3	0.3	0.5	0.3	0.5	0.3	0.3
working plane	0.2	0.2	0.2	0.2	0.2	0.2	0.2	0.2	0.2	0.2
Room dimensions	Viewed crosswise					Viewed endwise				
x = 2H y = 2H	22.5	24.0	22.9	24.3	24.6	21.2	22.7	21.6	23.1	23.4
3H	24.7	26.1	25.1	26.4	26.8	22.7	24.1	23.1	24.5	24.8
4H	25.8	27.2	26.3	27.5	27.9	23.4	24.7	23.8	25.0	25.4
6H	27.1	28.3	27.5	28.7	29.1	23.8	25.1	24.3	25.5	25.9
8H	27.7	28.9	28.2	29.3	29.8	24.0	25.2	24.4	25.6	26.0
12H	28.5	29.6	28.9	30.0	30.5	24.1	25.3	24.6	25.7	26.1
4H 2H	23.1	24.4	23.5	24.7	25.1	22.1	23.4	22.5	23.8	24.2
3H	25.5	26.6	25.9	27.1	27.5	23.8	25.0	24.3	25.4	25.8
4H	26.8	27.9	27.3	28.3	28.8	24.6	25.7	25.1	26.1	26.6
6H	28.3	29.2	28.8	29.7	30.2	25.2	26.2	25.7	26.7	27.2
8H	29.0	29.9	29.6	30.4	30.9	25.5	26.4	26.0	26.9	27.4
12H	29.9	30.8	30.5	31.3	31.8	25.7	26.5	26.2	27.0	27.6
8H 4H	27.1	28.0	27.7	28.5	29.0	25.3	26.2	25.8	26.7	27.2
6H	28.9	29.6	29.4	30.1	30.7	26.2	27.0	26.8	27.5	28.0
8H	29.8	30.5	30.4	31.1	31.6	26.6	27.3	27.2	27.8	28.4
12H	31.0	31.6	31.6	32.1	32.7	27.0	27.6	27.6	28.1	28.8
12H 4H	27.2	28.0	27.7	28.5	29.0	25.5	26.3	26.0	26.8	27.3
6H	29.0	29.6	29.5	30.2	30.8	26.6	27.2	27.1	27.8	28.4
8H	30.1	30.6	30.6	31.2	31.8	27.1	27.7	27.7	28.2	28.9
Variations with the observer position at spacings:										
S = 1.0H	+ 0.1 / - 0.1					+ 0.1 / - 0.2				
1.5H	+ 0.2 / - 0.3					+ 0.2 / - 0.3				
2.0H	+ 0.2 / - 0.3					+ 0.1 / - 0.3				

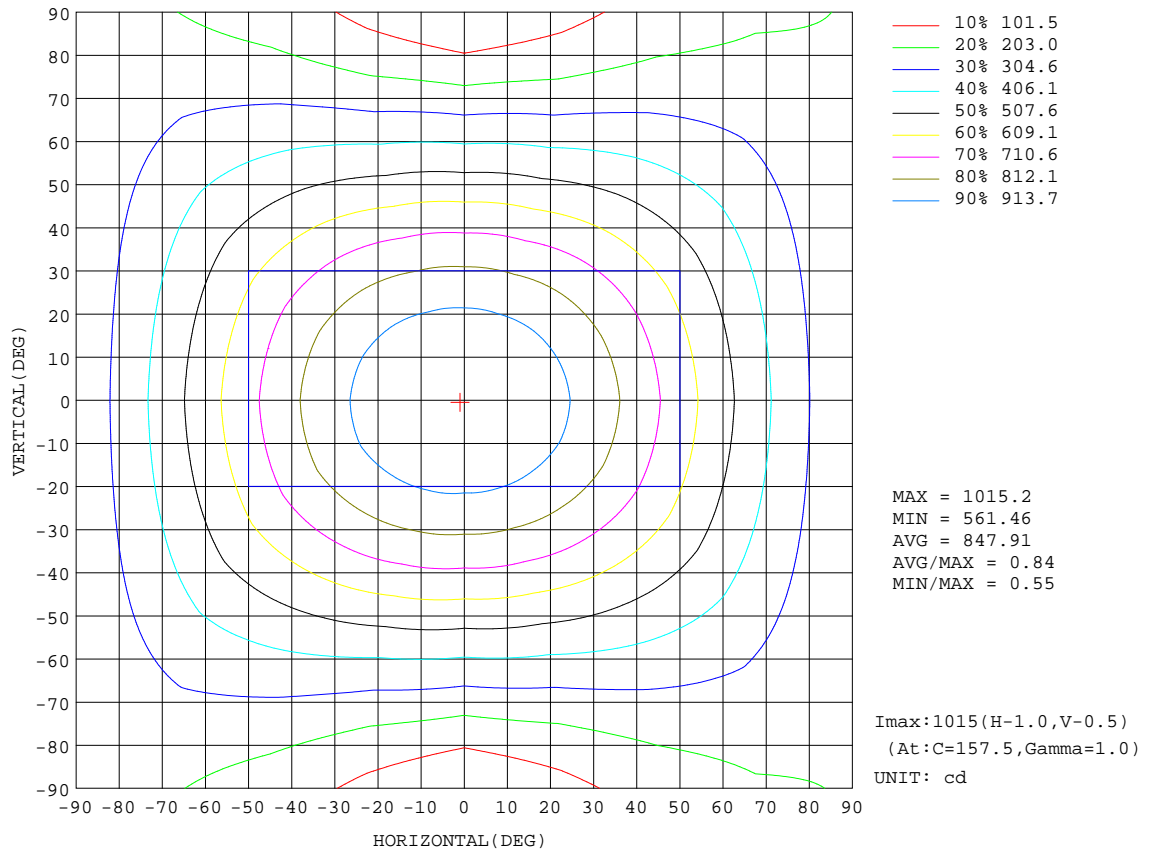
CIE Pub.117, 3414 lm Total Lamp Luminous Flux Corrected (8log(F/F0) = 4.3)
 Area: 0.06 m2

C Range: 0 - 360DEG
 C Interval: 22.5DEG
 Test Speed: MEDIUM
 Temperature:25.3DEG
 Operators:NEIKO
 Test Date:30 August 2023

γ Range: 0 - 130DEG
 γ Interval: 0.5DEG
 Test System:EVERFINE GO-2000A_V1 SYSTEM V2.00.421
 Humidity:65.0%
 Test Distance:9.770m [K=1.0000]
 Remarks:

ISOCANDELA DIAGRAM

Test:U:24.022V I:1.0178A P:24.438W PF:1.0000 Freq:50.00Hz Lamp Flux:3413.61x1 lm		
NAME: WP18W-CC-MS-24V	TYPE:LED	WEIGHT:
SPEC.:	DIM.:	SERIAL No.:BLD20230830A23
MFR.:	SUR.:0.1*0.6	Shielding Angle:

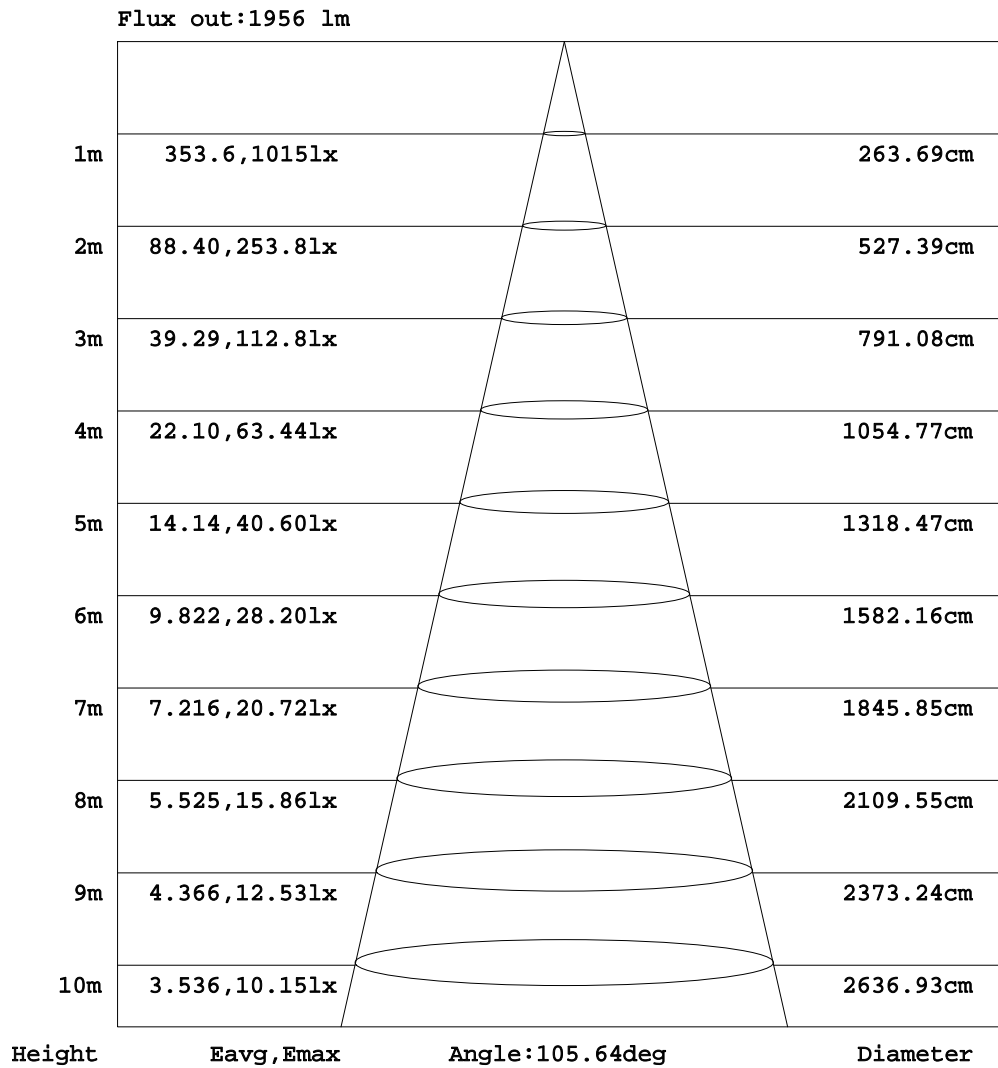


C Range: 0 - 360DEG
 C Interval: 22.5DEG
 Test Speed: MEDIUM
 Temperature:25.3DEG
 Operators:NEIKO
 Test Date:30 August 2023

γ Range: 0 - 130DEG
 γ Interval: 0.5DEG
 Test System:EVERFINE GO-2000A_V1 SYSTEM V2.00.421
 Humidity:65.0%
 Test Distance:9.770m [K=1.0000]
 Remarks:

AAI Figure

Test:U:24.022V I:1.0178A P:24.438W PF:1.0000 Freq:50.00Hz Lamp Flux:3413.61x1 lm		
NAME: WP18W-CC-MS-24V	TYPE:LED	WEIGHT:
SPEC.:	DIM.:	SERIAL No.:BLD20230830A23
MFR.:	SUR.:0.1*0.6	Shielding Angle:



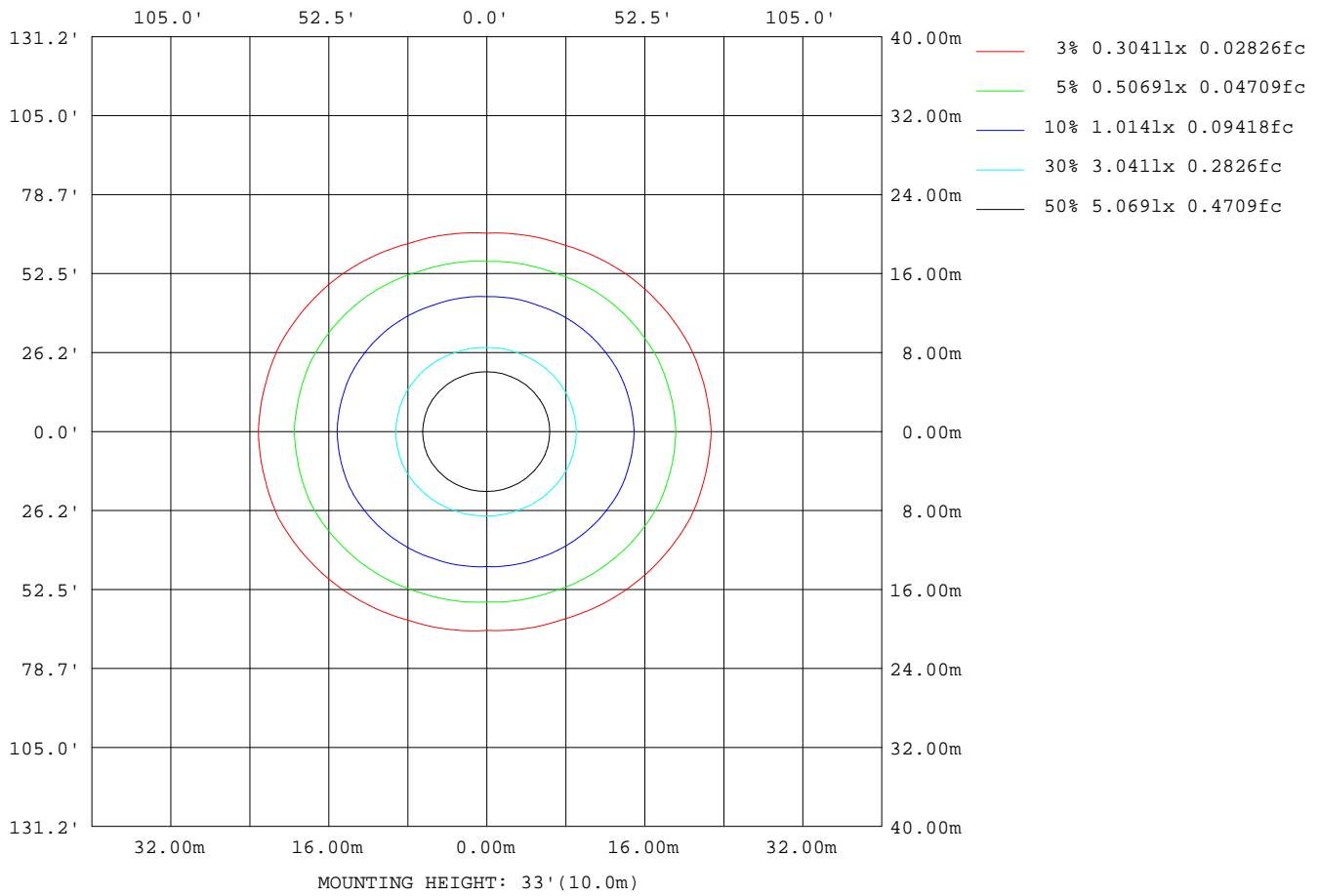
Note:The Curves indicate the illuminated area and the average illumination when the luminaire is at different distance.

C Range: 0 - 360DEG
 C Interval: 22.5DEG
 Test Speed: MEDIUM
 Temperature:25.3DEG
 Operators:NEIKO
 Test Date:30 August 2023

γ Range: 0 - 130DEG
 γ Interval: 0.5DEG
 Test System:EVERFINE GO-2000A_V1 SYSTEM V2.00.421
 Humidity:65.0%
 Test Distance:9.770m [K=1.0000]
 Remarks:

ISOLUX DIAGRAM

Test:U:24.022V I:1.0178A P:24.438W PF:1.0000 Freq:50.00Hz Lamp Flux:3413.61x1 lm		
NAME: WP18W-CC-MS-24V	TYPE:LED	WEIGHT:
SPEC.:	DIM.:	SERIAL No.:BLD20230830A23
MFR.:	SUR.:0.1*0.6	Shielding Angle:



C Range: 0 - 360DEG
 C Interval: 22.5DEG
 Test Speed: MEDIUM
 Temperature:25.3DEG
 Operators:NEIKO
 Test Date:30 August 2023

γ Range: 0 - 130DEG
 γ Interval: 0.5DEG
 Test System:EVERFINE GO-2000A_V1 SYSTEM V2.00.421
 Humidity:65.0%
 Test Distance:9.770m [K=1.0000]
 Remarks:

LED Avg.L Report

Test:U:24.022V I:1.0178A P:24.438W PF:1.0000 Freq:50.00Hz Lamp Flux:3413.61x1 lm		
NAME: WP18W-CC-MS-24V	TYPE:LED	WEIGHT:
SPEC.:	DIM.:	SERIAL No.:BLD20230830A23
MFR.:	SUR.:0.1*0.6	Shielding Angle:

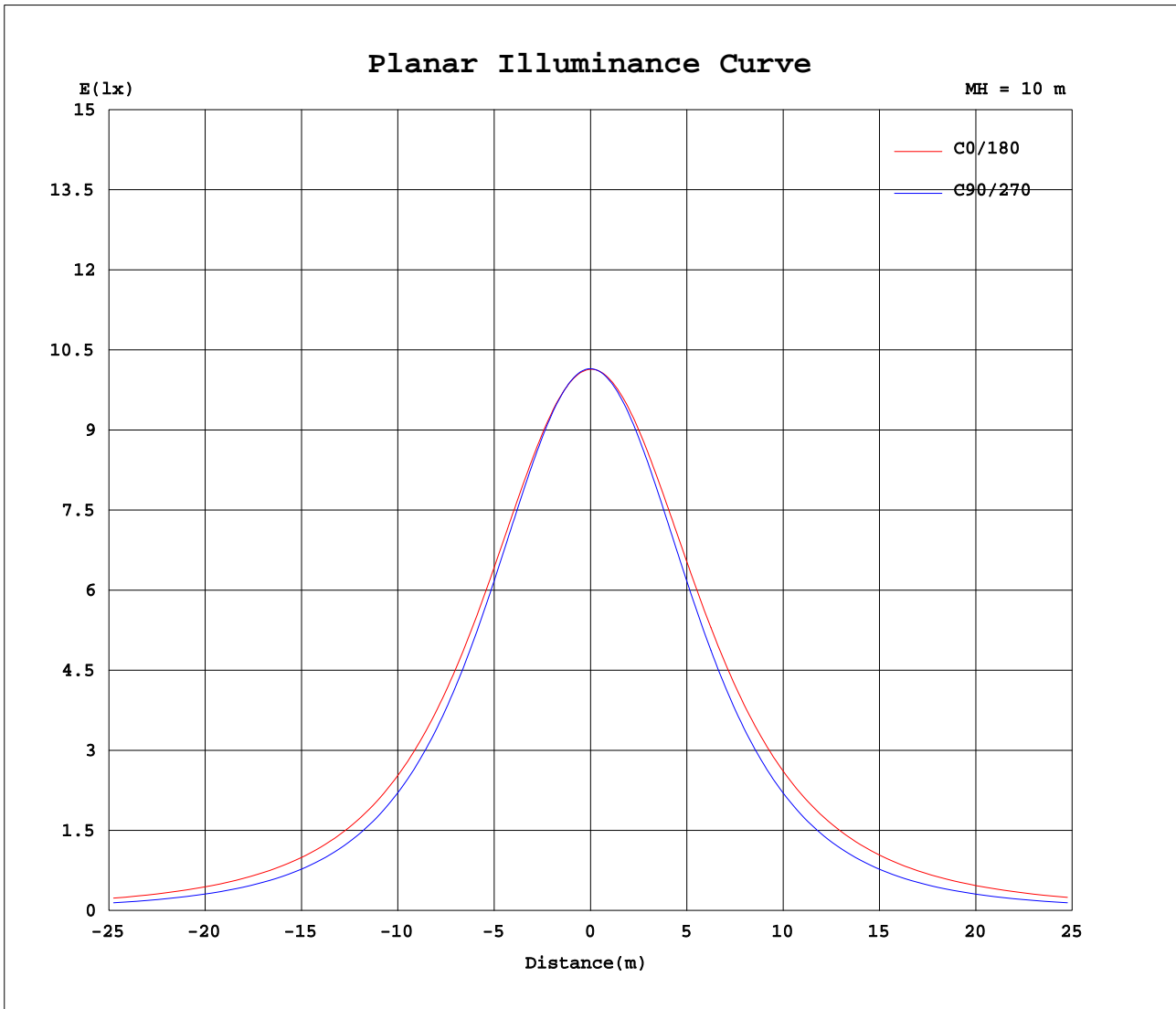
AvgL	cd/m2
L_0~180(65)av	19444
L_0~180(75)av	24096
L_0~180(85)av	50495
L_90~270(65)av	12717
L_90~270(75)av	11241
L_90~270(85)av	10343
L_45(65)av	16304
L_45(75)av	18829
L_45(85)av	36162

Standard: GB/T 29293-2012

C Range: 0 - 360DEG
 C Interval: 22.5DEG
 Test Speed: MEDIUM
 Temperature:25.3DEG
 Operators:NEIKO
 Test Date:30 August 2023

γ Range: 0 - 130DEG
 γ Interval: 0.5DEG
 Test System:EVERFINE GO-2000A_V1 SYSTEM V2.00.421
 Humidity:65.0%
 Test Distance:9.770m [K=1.0000]
 Remarks:

Planar Illuminance Curve



C Range: 0 - 360DEG
 C Interval: 22.5DEG
 Test Speed: MEDIUM
 Temperature: 25.3DEG
 Operators: NEIKO
 Test Date: 30 August 2023

γ Range: 0 - 130DEG
 γ Interval: 0.5DEG
 Test System: EVERFINE GO-2000A_V1 SYSTEM V2.00.421
 Humidity: 65.0%
 Test Distance: 9.770m [K=1.0000]
 Remarks:

LUMINOUS DISTRIBUTION INTENSITY DATA

Test:U:24.022V I:1.0178A P:24.438W PF:1.0000 Freq:50.00Hz Lamp Flux:3413.61x1 lm		
NAME: WP18W-CC-MS-24V	TYPE:LED	WEIGHT:
SPEC.:	DIM.:	SERIAL No.:BLD20230830A23
MFR.:	SUR.:0.1*0.6	Shielding Angle:

Table--1

UNIT: cd

C(DEG) γ (DEG)	0	22.5	45	67.5	90	112.5	135	157.5	180	202.5	225	247.5	270	292.5	315	337.5			
0	1015	1015	1015	1015	1015	1015	1015	1015	1015	1015	1015	1015	1015	1015	1015	1015			
5	1009	1009	1009	1009	1009	1010	1011	1012	1012	1011	1011	1009	1009	1008	1008	1008			
10	996	996	994	993	993	995	998	1001	1001	1000	997	993	992	991	993	994			
15	974	973	969	966	965	969	975	982	983	980	974	967	964	963	967	970			
20	946	943	935	929	927	934	944	955	957	953	943	931	926	926	934	940			
25	911	907	893	884	880	889	905	922	925	918	903	885	878	880	892	902			
30	870	864	845	830	825	837	858	881	887	877	856	833	823	826	843	859			
35	823	815	791	771	763	778	805	835	842	830	804	773	761	765	788	809			
40	772	762	731	705	695	713	747	784	793	778	746	708	694	700	729	755			
45	717	704	669	636	624	645	686	728	739	722	684	640	622	631	666	697			
50	659	644	603	565	551	575	621	669	683	664	619	569	549	559	600	637			
55	600	584	537	493	476	503	554	609	625	604	553	497	474	487	533	576			
60	540	522	470	420	399	429	488	548	566	543	487	425	397	414	468	515			
65	480	461	406	349	324	357	423	488	507	482	422	353	321	343	402	454			
70	420	401	344	280	248	288	361	427	445	421	359	284	246	274	340	394			
75	362	343	286	216	176	223	301	368	386	363	300	219	174	210	282	336			
80	306	288	232	159	109	165	246	311	329	306	245	162	107	153	228	282			
85	254	237	184	111	54.8	116	196	258	274	253	196	113	53.4	106	181	232			
90	208	192	143	74.8	25.2	78.4	153	210	225	206	153	77.1	24.5	71.0	140	187			
95	168	153	108	49.3	19.4	51.8	117	168	182	165	117	51.2	19.1	46.5	106	149			
100	133	120	80.3	31.7	15.8	33.3	87.4	132	145	130	87.2	33.0	15.5	29.6	78.2	116			
105	104	92.0	57.7	19.7	12.7	20.5	63.2	102	113	99.6	63.0	20.4	12.5	18.2	55.6	88.6			
110	78.6	68.3	39.5	11.9	10.3	12.2	43.6	76.3	86.4	74.4	43.5	12.3	10.1	11.1	37.8	65.4			
115	57.3	48.7	25.2	9.13	8.31	9.22	28.2	54.8	63.3	53.2	28.0	9.16	8.09	8.68	23.8	46.2			
120	39.7	32.5	14.5	7.42	6.75	7.44	16.3	37.2	44.2	36.0	16.1	7.45	6.55	7.09	13.2	30.5			
125	25.3	19.5	8.04	6.16	5.59	6.15	8.62	22.9	28.4	21.9	8.41	6.19	5.43	5.92	7.30	18.0			
130	13.9	10.2	6.62	5.34	4.77	5.28	6.81	12.1	15.8	11.5	6.75	5.29	4.74	5.06	6.22	9.26			
135	0.00	0.00	0.00	0.00	0.00	0.00	0.00	0.00	0.00	0.00	0.00	0.00	0.00	0.00	0.00	0.00			
140	0.00	0.00	0.00	0.00	0.00	0.00	0.00	0.00	0.00	0.00	0.00	0.00	0.00	0.00	0.00	0.00			
145	0.00	0.00	0.00	0.00	0.00	0.00	0.00	0.00	0.00	0.00	0.00	0.00	0.00	0.00	0.00	0.00			
150	0.00	0.00	0.00	0.00	0.00	0.00	0.00	0.00	0.00	0.00	0.00	0.00	0.00	0.00	0.00	0.00			
155	0.00	0.00	0.00	0.00	0.00	0.00	0.00	0.00	0.00	0.00	0.00	0.00	0.00	0.00	0.00	0.00			
160	0.00	0.00	0.00	0.00	0.00	0.00	0.00	0.00	0.00	0.00	0.00	0.00	0.00	0.00	0.00	0.00			
165	0.00	0.00	0.00	0.00	0.00	0.00	0.00	0.00	0.00	0.00	0.00	0.00	0.00	0.00	0.00	0.00			
170	0.00	0.00	0.00	0.00	0.00	0.00	0.00	0.00	0.00	0.00	0.00	0.00	0.00	0.00	0.00	0.00			
175	0.00	0.00	0.00	0.00	0.00	0.00	0.00	0.00	0.00	0.00	0.00	0.00	0.00	0.00	0.00	0.00			
180	0.00	0.00	0.00	0.00	0.00	0.00	0.00	0.00	0.00	0.00	0.00	0.00	0.00	0.00	0.00	0.00			

C Range: 0 - 360DEG
 C Interval: 22.5DEG
 Test Speed: MEDIUM
 Temperature:25.3DEG
 Operators:NEIKO
 Test Date:30 August 2023

γ Range: 0 - 130DEG
 γ Interval: 0.5DEG
 Test System:EVERFINE GO-2000A_V1 SYSTEM V2.00.421
 Humidity:65.0%
 Test Distance:9.770m [K=1.0000]
 Remarks: