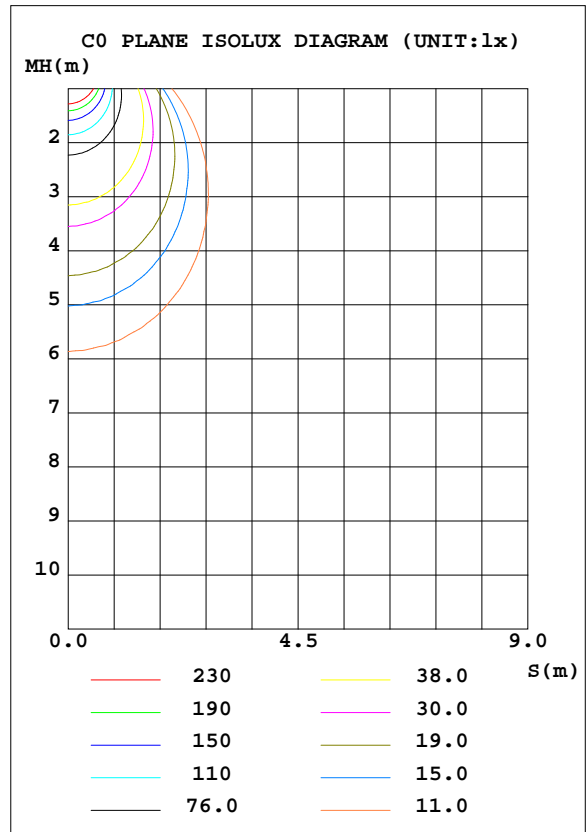
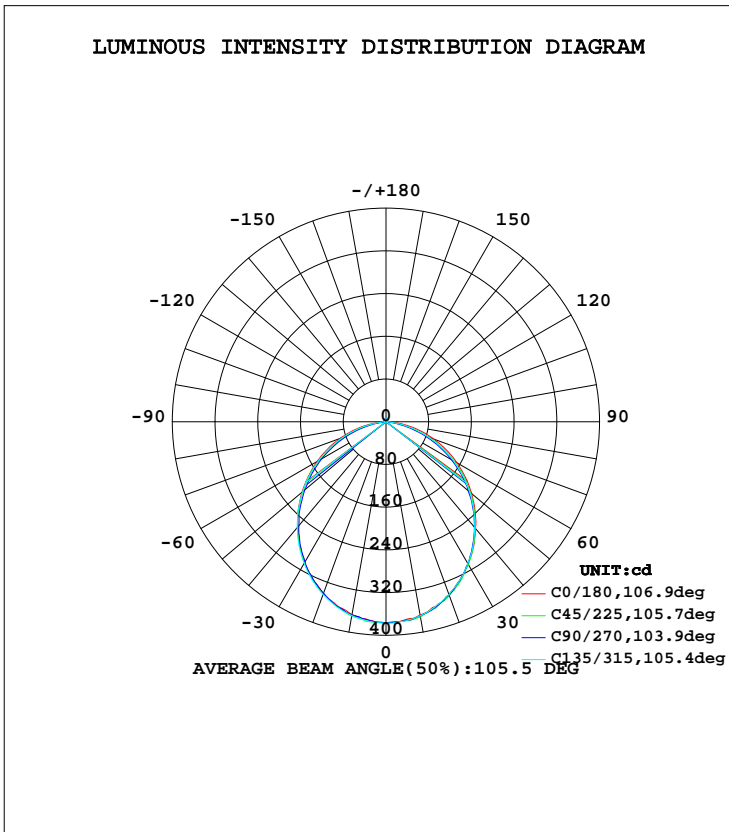


LUMINAIRE PHOTOMETRIC TEST REPORT

Test:U:240.2V I:0.0370A P:8.260W PF:0.9130 Lamp Flux:1007.73x1 lm		
NAME: ID-S-10W-CC	TYPE:8W	WEIGHT:
DIM.:	SPEC.:5700K	SERIAL No.:1
MFR.:	SUR.:0.04	PROTECTION ANGLE:

DATA OF LAMP		PHOTOMETRIC DATA Eff: 122.00 lm/W			
MODEL	ID-S-10W-CC	I _{max} (cd)	377.2	S/MH(C0/180)	1.21
NOMINAL POWER(W)	8	LOR(%)	100.0	S/MH(C90/270)	1.20
RATED VOLTAGE(V)	240	TOTAL FLUX(lm)	1007.7	η UP, DN(C0-180)	1.2, 48.5
NOMINAL FLUX(lm)	1007.73	CIE CLASS	DIRECT	η UP, DN(C180-360)	1.2, 49.1
LAMPS INSIDE	1	η up(%)	2.4	CIBSE SHR NOM	1.25
TEST VOLTAGE(V)	240.2	η down(%)	97.6	CIBSE SHR MAX	1.35



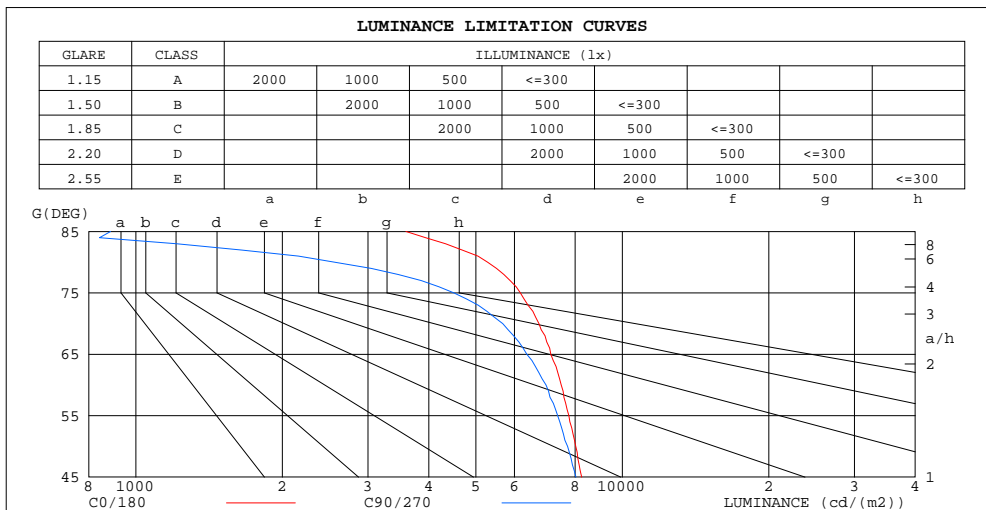
C Range: 0 - 360DEG
 C Interval: 45.0DEG
 Test Speed: HIGH
 Temperature:25.3DEG
 Operators:DAMIN
 Test Date:2021-11-11

γ Range: 0 - 180DEG
 γ Interval: 1.0DEG
 Test System:EVERFINE GO-2000A_V1 SYSTEM V2.0.276
 Humidity:65.0%
 Test Distance:10.237m [K=1.0000]
 Remarks:

ZONAL FLUX DIAGRAM
AND LUMINANCE LIMITATION CURVES

ZONAL FLUX DIAGRAM:

γ	C0	C45	C90	C135	C180	C225	C270	C315	γ	Φ zone	Φ total	#lum,lamp
10	366.9	369.4	367.0	368.6	367.4	371.7	369.0	368.9	0- 10	35.55	35.55	3.53,3.53
20	342.0	342.5	342.1	344.7	344.7	346.2	345.8	344.8	10- 20	100.9	136.4	13.5,13.5
30	304.1	305.2	303.6	306.1	307.6	308.8	306.7	306.8	20- 30	150.3	286.8	28.5,28.5
40	257.2	256.6	253.7	258.9	260.8	260.1	257.5	258.4	30- 40	177.0	463.8	46,46
50	205.4	202.8	198.4	204.1	209.7	206.2	200.8	204.8	40- 50	178.8	642.6	63.8,63.8
60	149.2	144.5	139.4	145.8	153.5	147.3	141.1	145.8	50- 60	156.6	799.1	79.3,79.3
70	91.85	84.77	77.71	86.22	95.68	86.61	78.26	85.06	60- 70	114.5	913.6	90.7,90.7
80	36.55	26.53	17.80	27.73	40.53	27.10	20.05	27.31	70- 80	59.33	972.9	96.5,96.5
90	2.213	2.767	2.077	2.394	2.355	2.786	2.370	2.818	80- 90	10.86	983.8	97.6,97.6
100	2.998	3.115	2.735	3.022	2.627	3.153	2.556	2.811	90-100	3.030	986.8	97.9,97.9
110	3.402	3.543	3.059	3.305	3.061	3.212	2.984	3.070	100-110	3.172	990.0	98.2,98.2
120	3.961	3.791	3.657	3.813	3.600	3.653	3.650	3.578	110-120	3.417	993.4	98.6,98.6
130	4.432	4.229	4.184	4.670	4.006	3.931	3.946	3.994	120-130	3.507	996.9	98.9,98.9
140	4.881	4.700	4.492	4.628	4.399	4.361	4.468	4.459	130-140	3.369	1000	99.3,99.3
150	5.056	5.129	4.936	5.079	4.812	4.699	4.833	4.796	140-150	2.983	1003	99.6,99.6
160	5.526	5.439	5.584	5.396	5.141	5.009	5.197	5.121	150-160	2.384	1006	99.8,99.8
170	5.631	5.594	5.585	5.544	5.526	5.382	5.550	5.487	160-170	1.537	1007	99.9,99.9
180	5.750	5.721	6.189	5.713	5.729	5.834	5.816	5.818	170-180	0.5358	1008	100,100
DEG	LUMINOUS INTENSITY:cd									UNIT:lm		



LUMINANCE cd/(m2)		
G(DEG)	C0/180	C90/270
85	3591	887
80	5283	2561
75	6171	4508
70	6741	5679
65	7129	6362
60	7488	6968
55	7762	7364
50	8019	7715
45	8249	8030

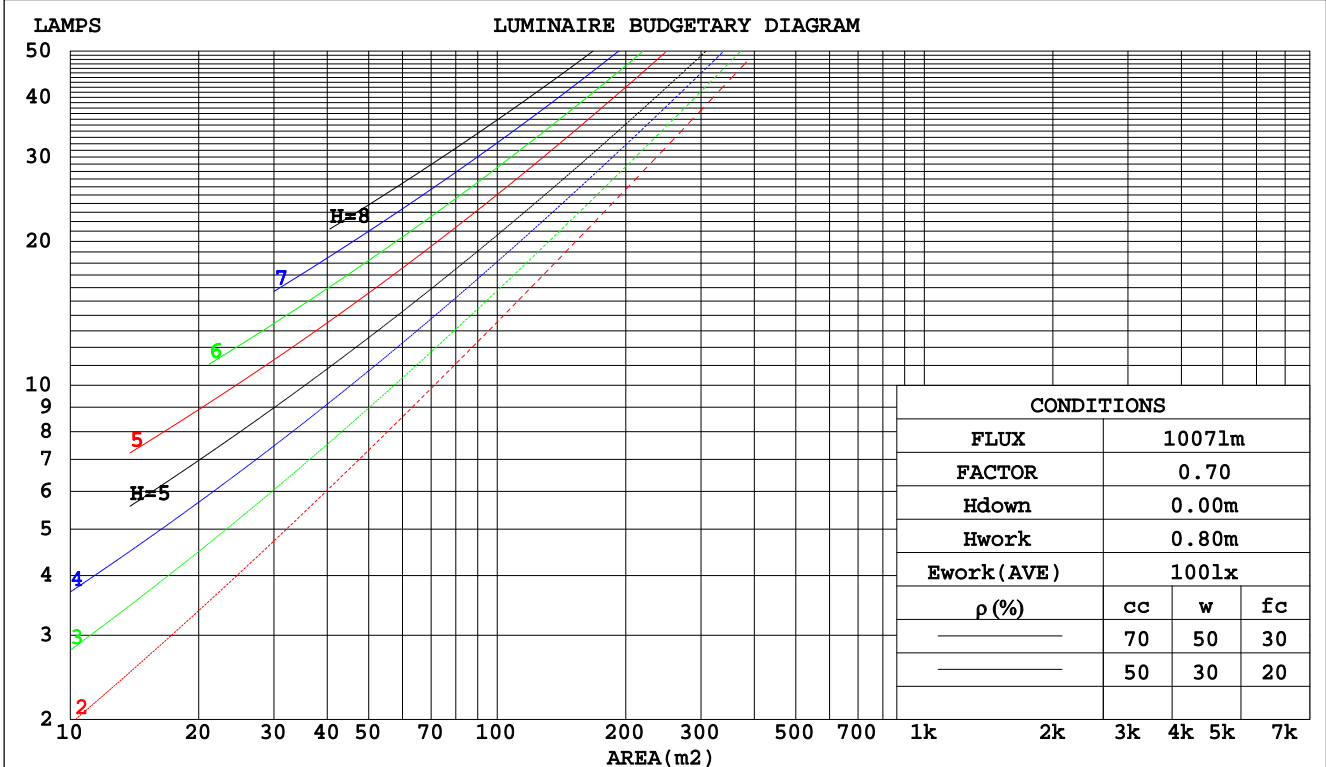
C Range: 0 - 360DEG
C Interval: 45.0DEG
Test Speed: HIGH
Temperature:25.3DEG
Operators:DAMIN
Test Date:2021-11-11

γ Range: 0 - 180DEG
 γ Interval: 1.0DEG
Test System:EVERFINE GO-2000A_V1 SYSTEM V2.0.276
Humidity:65.0%
Test Distance:10.237m [K=1.0000]
Remarks:

CU AND LUMINAIRE BUDGETARY ESTIMATE DIAGRAM

Test:U:240.2V I:0.0370A P:8.260W PF:0.9130 Lamp Flux:1007.73x1 lm		
NAME: ID-S-10W-CC	TYPE:8W	WEIGHT:
DIM.:	SPEC.:5700K	SERIAL No.:1
MFR.:	SUR.:0.04	PROTECTION ANGLE:

pcc	80%			70%			50%			30%			10%			0
	50%	30%	10%	50%	30%	10%	50%	30%	10%	50%	30%	10%	50%	30%	10%	0
pw																0
pfc	20%			20%			20%			20%			20%			0
RCR	RCR:Room Cavity Ratio															
	Coefficients of Utilization(CU)															
0.0	1.18	1.18	1.18	1.15	1.15	1.15	1.10	1.10	1.10	1.05	1.05	1.05	.00	.00	.00	.98
1.0	1.04	1.00	.96	1.02	.98	.95	.97	.94	.91	.93	.90	.88	.89	.87	.85	.83
2.0	.91	.85	.79	.89	.83	.78	.85	.80	.76	.82	.77	.74	.78	.75	.72	.69
3.0	.80	.72	.66	.79	.71	.65	.75	.69	.64	.72	.67	.62	.69	.65	.61	.59
4.0	.71	.63	.56	.70	.62	.56	.67	.60	.55	.64	.58	.54	.62	.57	.53	.50
5.0	.64	.55	.48	.63	.54	.48	.60	.53	.47	.58	.52	.47	.56	.50	.46	.44
6.0	.57	.49	.42	.56	.48	.42	.54	.47	.42	.52	.46	.41	.51	.45	.40	.38
7.0	.52	.44	.38	.51	.43	.37	.50	.42	.37	.48	.41	.36	.46	.40	.36	.34
8.0	.48	.39	.34	.47	.39	.33	.45	.38	.33	.44	.37	.33	.43	.37	.32	.30
9.0	.44	.36	.30	.43	.35	.30	.42	.35	.30	.41	.34	.29	.39	.34	.29	.27
10.0	.40	.33	.27	.40	.32	.27	.39	.32	.27	.38	.31	.27	.37	.31	.27	.25



C Range: 0 - 360DEG
 C Interval: 45.0DEG
 Test Speed: HIGH
 Temperature: 25.3DEG
 Operators: DAMIN
 Test Date: 2021-11-11

γ Range: 0 - 180DEG
 γ Interval: 1.0DEG
 Test System: EVERFINE GO-2000A_V1 SYSTEM V2.0.276
 Humidity: 65.0%
 Test Distance: 10.237m [K=1.0000]
 Remarks:

WEC AND CCEC

Test:U:240.2V I:0.0370A P:8.260W PF:0.9130 Lamp Flux:1007.73x1 lm		
NAME: ID-S-10W-CC	TYPE:8W	WEIGHT:
DIM.:	SPEC.:5700K	SERIAL No.:1
MFR.:	SUR.:0.04	PROTECTION ANGLE:

ρcc	80%			70%			50%			30%			10%			0
ρw	50%	30%	10%	50%	30%	10%	50%	30%	10%	50%	30%	10%	50%	30%	10%	0
ρfc	20%			20%			20%			20%			20%			0
RCR	RCR:Room Cavity Ratio						Wall Exitance Coefficients(WEC)									
0.0																
1.0	.293	.167	.053	.285	.163	.052	.271	.155	.050	.257	.148	.048	.245	.142	.046	
2.0	.279	.153	.047	.272	.150	.046	.260	.144	.045	.248	.139	.044	.237	.134	.042	
3.0	.260	.139	.042	.254	.136	.041	.243	.132	.040	.232	.127	.039	.223	.123	.038	
4.0	.242	.126	.037	.236	.124	.037	.226	.120	.036	.217	.116	.035	.208	.113	.034	
5.0	.224	.114	.033	.219	.113	.033	.210	.109	.032	.202	.107	.032	.194	.104	.031	
6.0	.208	.105	.030	.204	.103	.030	.196	.100	.029	.188	.098	.029	.181	.095	.028	
7.0	.194	.096	.027	.191	.095	.027	.183	.093	.027	.176	.090	.026	.170	.088	.026	
8.0	.182	.089	.025	.179	.088	.025	.172	.086	.025	.166	.084	.024	.160	.082	.024	
9.0	.171	.083	.023	.168	.082	.023	.162	.080	.023	.156	.078	.022	.151	.077	.022	
10.0	.161	.077	.021	.158	.076	.021	.153	.075	.021	.147	.073	.021	.143	.072	.021	

ρcc	80%			70%			50%			30%			10%			0
ρw	50%	30%	10%	50%	30%	10%	50%	30%	10%	50%	30%	10%	50%	30%	10%	0
ρfc	20%			20%			20%			20%			20%			0
RCR	RCR:Room Cavity Ratio						Ceiling Cavity Exitance Coefficients(CCEC)									
0.0	.209	.209	.209	.178	.178	.178	.122	.122	.122	.070	.070	.070	.022	.022	.022	
1.0	.197	.175	.154	.169	.150	.132	.116	.103	.092	.066	.060	.053	.021	.019	.017	
2.0	.189	.150	.118	.162	.129	.102	.111	.090	.071	.064	.052	.042	.021	.017	.014	
3.0	.181	.133	.094	.155	.114	.082	.107	.080	.057	.062	.046	.034	.020	.015	.011	
4.0	.174	.119	.078	.149	.103	.068	.102	.072	.048	.059	.042	.028	.019	.014	.009	
5.0	.166	.109	.067	.143	.094	.058	.098	.066	.041	.057	.039	.024	.018	.013	.008	
6.0	.159	.101	.059	.137	.087	.051	.094	.061	.036	.055	.036	.021	.018	.012	.007	
7.0	.152	.094	.053	.131	.081	.046	.091	.057	.032	.053	.034	.019	.017	.011	.006	
8.0	.146	.088	.048	.126	.076	.042	.087	.054	.030	.051	.032	.018	.016	.010	.006	
9.0	.140	.083	.044	.121	.072	.039	.084	.051	.027	.049	.030	.016	.016	.010	.005	
10.0	.135	.079	.042	.116	.068	.036	.081	.048	.026	.047	.028	.015	.015	.009	.005	

C Range: 0 - 360DEG
 C Interval: 45.0DEG
 Test Speed: HIGH
 Temperature:25.3DEG
 Operators:DAMIN
 Test Date:2021-11-11

γ Range: 0 - 180DEG
 γ Interval: 1.0DEG
 Test System:EVERFINE GO-2000A_V1 SYSTEM V2.0.276
 Humidity:65.0%
 Test Distance:10.237m [K=1.0000]
 Remarks:

Uncorrected UGR Table

Test:U:240.2V I:0.0370A P:8.260W PF:0.9130 Lamp Flux:1007.73x1 lm										
NAME: ID-S-10W-CC					TYPE:8W			WEIGHT:		
DIM.:					SPEC.:5700K			SERIAL No.:1		
MFR.:					SUR.:0.04			PROTECTION ANGLE:		
ceiling/cavity	0.7	0.7	0.5	0.5	0.3	0.7	0.7	0.5	0.5	0.3
walls	0.5	0.3	0.5	0.3	0.3	0.5	0.3	0.5	0.3	0.3
working plane	0.2	0.2	0.2	0.2	0.2	0.2	0.2	0.2	0.2	0.2
Room dimensions	Viewed crosswise					Viewed endwise				
x = 2H y = 2H	19.8	21.3	20.1	21.5	21.7	19.6	21.0	19.9	21.3	21.5
3H	21.3	22.6	21.6	22.9	23.1	20.8	22.1	21.1	22.4	22.7
4H	21.8	23.1	22.2	23.4	23.7	21.2	22.5	21.5	22.8	23.1
6H	22.2	23.4	22.5	23.7	24.0	21.3	22.5	21.7	22.8	23.2
8H	22.3	23.4	22.6	23.7	24.1	21.3	22.5	21.7	22.8	23.1
12H	22.3	23.4	22.7	23.7	24.1	21.3	22.4	21.6	22.7	23.0
4H 2H	20.3	21.6	20.7	21.9	22.2	20.1	21.4	20.5	21.7	22.0
3H	21.9	23.0	22.3	23.4	23.7	21.6	22.7	21.9	23.0	23.4
4H	22.6	23.6	23.0	24.0	24.4	22.0	23.1	22.5	23.4	23.8
6H	23.1	24.0	23.5	24.4	24.8	22.3	23.1	22.7	23.5	24.0
8H	23.2	24.0	23.7	24.4	24.9	22.2	23.1	22.7	23.5	23.9
12H	23.3	24.0	23.7	24.4	24.9	22.2	23.0	22.7	23.4	23.8
8H 4H	22.8	23.6	23.2	24.0	24.4	22.3	23.1	22.7	23.5	23.9
6H	23.3	24.0	23.8	24.5	24.9	22.5	23.2	23.0	23.7	24.2
8H	23.5	24.1	24.0	24.6	25.1	22.6	23.2	23.1	23.6	24.1
12H	23.6	24.1	24.1	24.6	25.1	22.5	23.1	23.1	23.5	24.1
12H 4H	22.7	23.5	23.2	23.9	24.4	22.2	23.0	22.7	23.4	23.9
6H	23.3	23.9	23.8	24.4	24.9	22.6	23.2	23.1	23.6	24.1
8H	23.5	24.0	24.0	24.5	25.0	22.6	23.1	23.1	23.6	24.1
Variations with the observer position at spacings:										
S = 1.0H	+ 0.2 / - 0.2					+ 0.2 / - 0.3				
1.5H	+ 0.2 / - 0.3					+ 0.2 / - 0.4				
2.0H	+ 0.2 / - 0.3					+ 0.3 / - 0.4				

CIE Pub.117 Corrected 1008 lm Total Lamp Luminous Flux.(8log(F/F0) = 0.0)

C Range: 0 - 360DEG
 C Interval: 45.0DEG
 Test Speed: HIGH
 Temperature:25.3DEG
 Operators:DAMIN
 Test Date:2021-11-11

γ Range: 0 - 180DEG
 γ Interval: 1.0DEG
 Test System:EVERFINE GO-2000A_V1 SYSTEM V2.0.276
 Humidity:65.0%
 Test Distance:10.237m [K=1.0000]
 Remarks:

UTILIZATION FACTORS TABLE

Test:U:240.2V I:0.0370A P:8.260W PF:0.9130 Lamp Flux:1007.73x1 lm		
NAME: ID-S-10W-CC	TYPE:8W	WEIGHT:
DIM.:	SPEC.:5700K	SERIAL No.:1
MFR.:	SUR.:0.04	PROTECTION ANGLE:

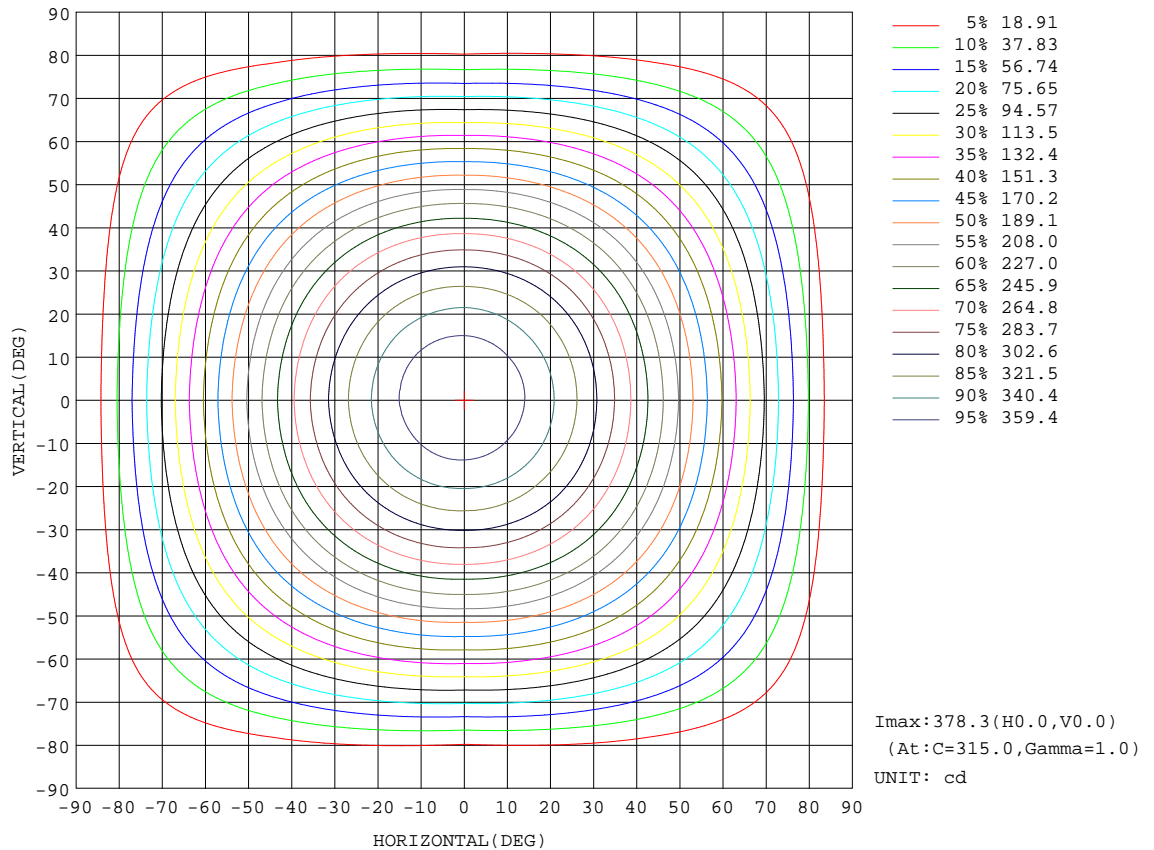
REFLECTANCE										
Ceiling	0.8	0.8	0.8	0.7	0.7	0.7	0.5	0.5	0.5	0
Walls	0.7	0.5	0.3	0.7	0.5	0.3	0.7	0.5	0.3	0
Working plane	0.2	0.2	0.2	0.2	0.2	0.2	0.2	0.2	0.2	0
ROOM INDEX	UTILIZATION FACTORS(PERCENT) $k(RI) \times RCR = 5$									
k = 0.60	58	47	40	57	47	40	56	46	40	33
0.80	68	57	50	67	56	50	65	56	49	42
1.00	77	66	59	75	65	58	73	66	58	51
1.25	84	73	67	82	73	66	79	71	65	58
1.50	89	79	72	87	78	72	84	76	70	63
2.00	95	87	81	93	86	80	90	83	78	70
2.50	99	92	86	97	90	85	93	87	83	74
3.00	102	96	90	100	94	89	96	91	87	78
4.00	106	101	96	104	99	95	99	95	92	82
5.00	109	104	100	106	102	98	101	98	95	85
ROOM INDEX	UF(total)									Direct
According to DIN EN 13032-2 2004			Suspended				SHRNOM = 1.25			

C Range: 0 - 360DEG
 C Interval: 45.0DEG
 Test Speed: HIGH
 Temperature:25.3DEG
 Operators:DAMIN
 Test Date:2021-11-11

γ Range: 0 - 180DEG
 γ Interval: 1.0DEG
 Test System:EVERFINE GO-2000A_V1 SYSTEM V2.0.276
 Humidity:65.0%
 Test Distance:10.237m [K=1.0000]
 Remarks:

ISOCANDELA DIAGRAM

Test:U:240.2V I:0.0370A P:8.260W PF:0.9130 Lamp Flux:1007.73x1 lm		
NAME: ID-S-10W-CC	TYPE:8W	WEIGHT:
DIM.:	SPEC.:5700K	SERIAL No.:1
MFR.:	SUR.:0.04	PROTECTION ANGLE:

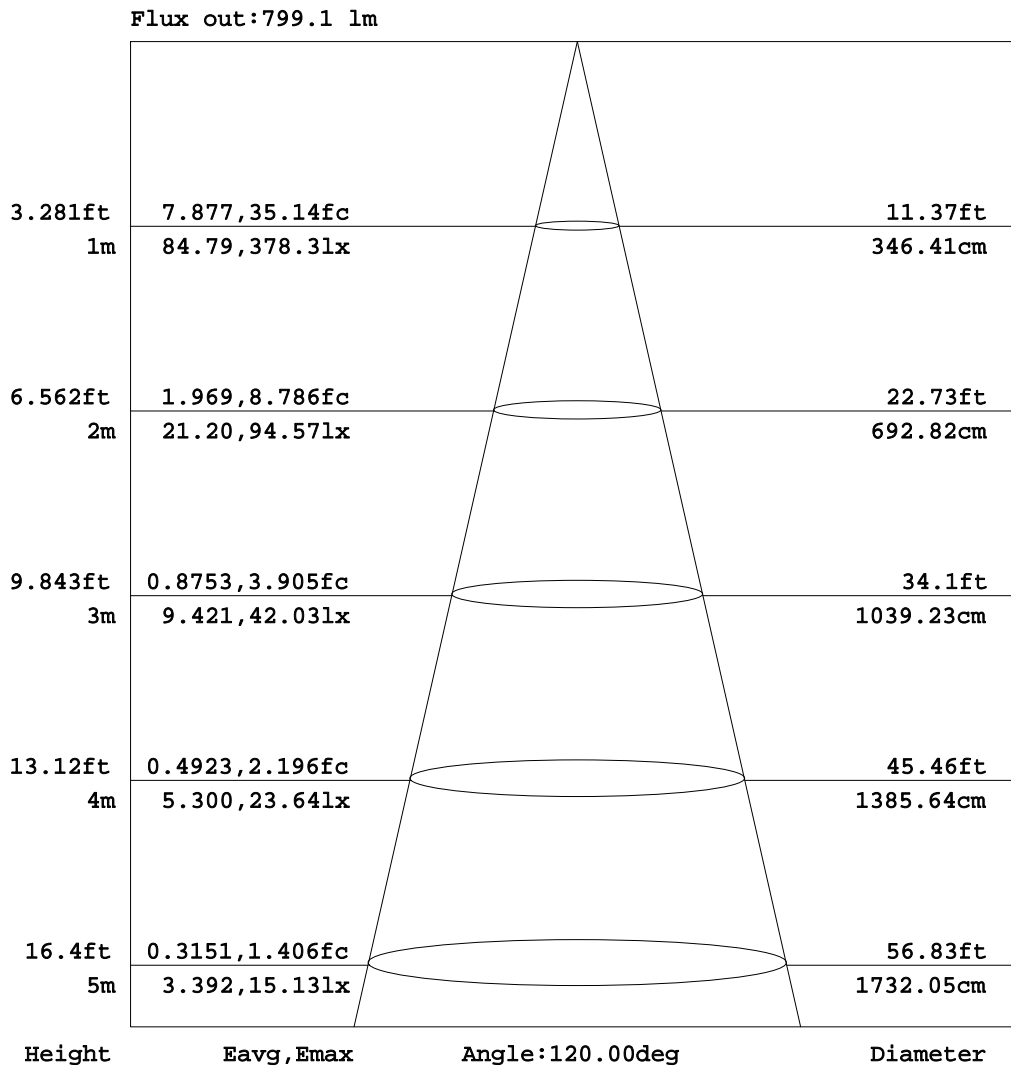


C Range: 0 - 360DEG
 C Interval: 45.0DEG
 Test Speed: HIGH
 Temperature: 25.3DEG
 Operators: DAMIN
 Test Date: 2021-11-11

γ Range: 0 - 180DEG
 γ Interval: 1.0DEG
 Test System: EVERFINE GO-2000A_V1 SYSTEM V2.0.276
 Humidity: 65.0%
 Test Distance: 10.237m [K=1.0000]
 Remarks:

AAI Figure

Test:U:240.2V I:0.0370A P:8.260W PF:0.9130 Lamp Flux:1007.73x1 lm		
NAME: ID-S-10W-CC	TYPE:8W	WEIGHT:
DIM.:	SPEC.:5700K	SERIAL No.:1
MFR.:	SUR.:0.04	PROTECTION ANGLE:



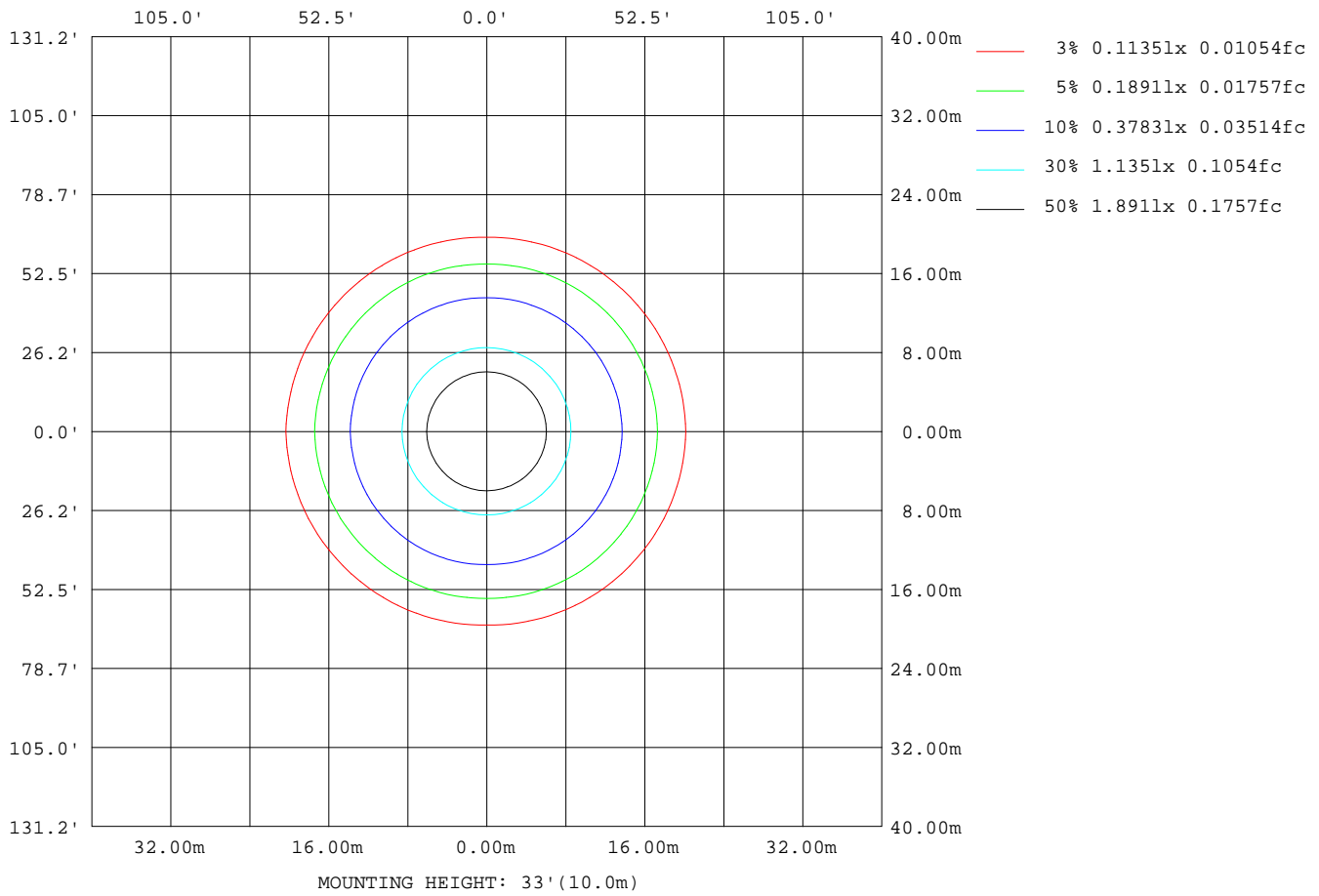
Note:The Curves indicate the illuminated area and the average illumination when the luminaire is at different distance.

C Range: 0 - 360DEG
 C Interval: 45.0DEG
 Test Speed: HIGH
 Temperature:25.3DEG
 Operators:DAMIN
 Test Date:2021-11-11

γ Range: 0 - 180DEG
 γ Interval: 1.0DEG
 Test System:EVERFINE GO-2000A_V1 SYSTEM V2.0.276
 Humidity:65.0%
 Test Distance:10.237m [K=1.0000]
 Remarks:

ISOLUX DIAGRAM

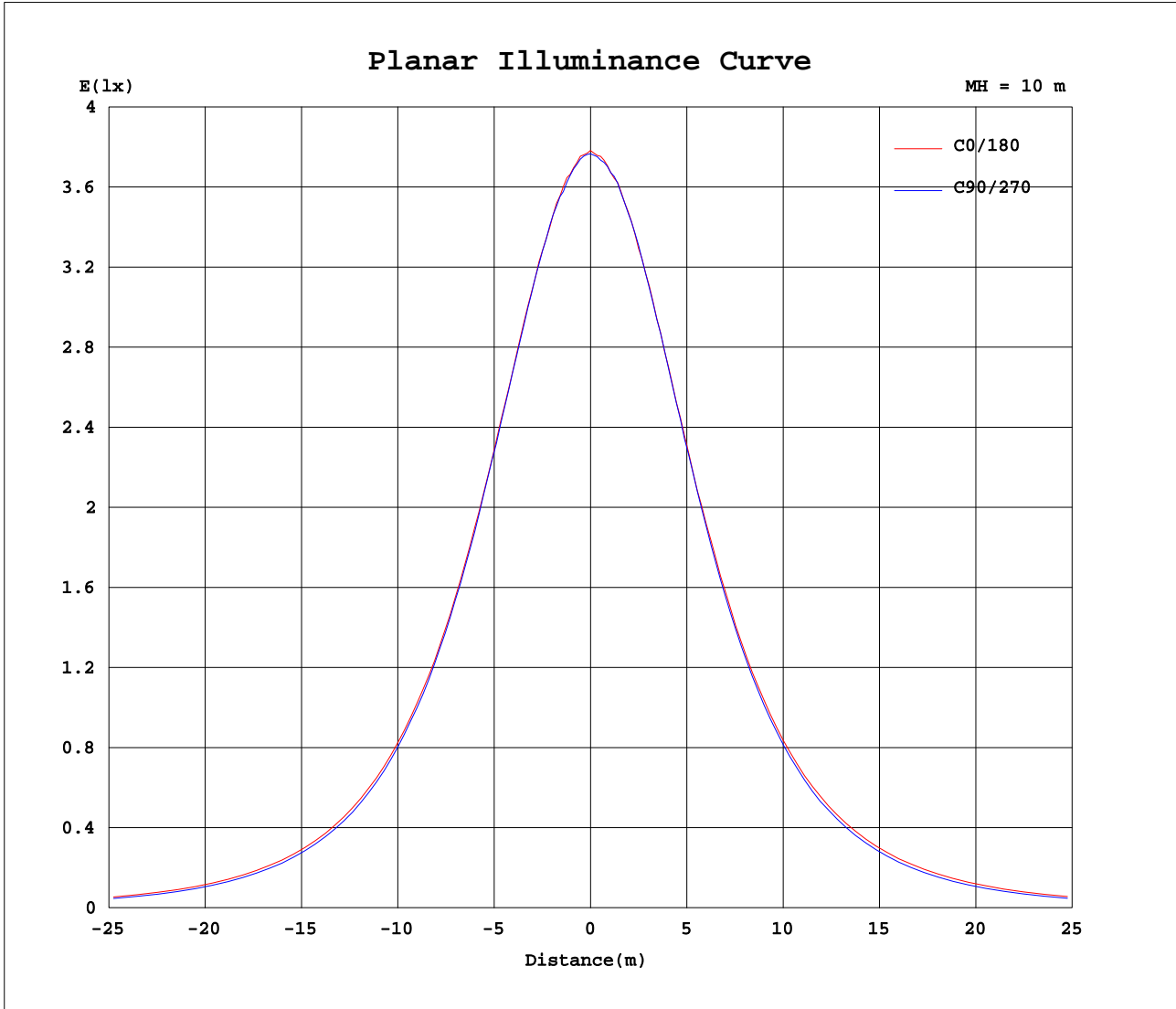
Test:U:240.2V I:0.0370A P:8.260W PF:0.9130 Lamp Flux:1007.73x1 lm		
NAME: ID-S-10W-CC	TYPE:8W	WEIGHT:
DIM.:	SPEC.:5700K	SERIAL No.:1
MFR.:	SUR.:0.04	PROTECTION ANGLE:



C Range: 0 - 360DEG
 C Interval: 45.0DEG
 Test Speed: HIGH
 Temperature:25.3DEG
 Operators:DAMIN
 Test Date:2021-11-11

γ Range: 0 - 180DEG
 γ Interval: 1.0DEG
 Test System:EVERFINE GO-2000A_V1 SYSTEM V2.0.276
 Humidity:65.0%
 Test Distance:10.237m [K=1.0000]
 Remarks:

Planar Illuminance Curve



C Range: 0 - 360DEG
 C Interval: 45.0DEG
 Test Speed: HIGH
 Temperature: 25.3DEG
 Operators: DAMIN
 Test Date: 2021-11-11

γ Range: 0 - 180DEG
 γ Interval: 1.0DEG
 Test System: EVERFINE GO-2000A_V1 SYSTEM V2.0.276
 Humidity: 65.0%
 Test Distance: 10.237m [K=1.0000]
 Remarks:

LUMINOUS DISTRIBUTION INTENSITY DATA

Test:U:240.2V I:0.0370A P:8.260W PF:0.9130 Lamp Flux:1007.73x1 lm		
NAME: ID-S-10W-CC	TYPE:8W	WEIGHT:
DIM.:	SPEC.:5700K	SERIAL No.:1
MFR.:	SUR.:0.04	PROTECTION ANGLE:

Table--1

UNIT: cd

C(DEG) γ (DEG)	0	45	90	135	180	225	270	315											
0	377	377	377	377	377	377	377	377											
5	373	376	373	375	374	375	375	375											
10	367	369	367	369	367	372	369	369											
15	357	357	357	359	358	361	359	358											
20	342	343	342	345	345	346	346	345											
25	325	325	325	327	327	330	328	327											
30	304	305	304	306	308	309	307	307											
35	282	281	281	284	286	285	283	284											
40	257	257	254	259	261	260	258	258											
45	232	231	227	232	236	233	230	232											
50	205	203	198	204	210	206	201	205											
55	177	173	169	175	182	178	172	175											
60	149	144	139	146	154	147	141	146											
65	120	115	108	116	124	117	109	115											
70	91.9	84.8	77.7	86.2	95.7	86.6	78.3	85.1											
75	63.6	55.1	46.7	56.4	67.7	56.1	47.3	55.5											
80	36.6	26.5	17.8	27.7	40.5	27.1	20.0	27.3											
85	12.5	4.37	3.09	4.57	15.4	5.77	3.45	5.84											
90	2.21	2.77	2.08	2.39	2.36	2.79	2.37	2.82											
95	2.52	2.66	2.87	2.61	2.55	2.87	4.17	3.01											
100	3.00	3.12	2.74	3.02	2.63	3.15	2.56	2.81											
105	3.12	3.25	2.82	3.16	2.77	2.99	2.77	2.80											
110	3.40	3.54	3.06	3.31	3.06	3.21	2.98	3.07											
115	3.61	3.58	3.35	3.58	3.34	3.43	3.27	3.33											
120	3.96	3.79	3.66	3.81	3.60	3.65	3.65	3.58											
125	4.20	4.06	3.92	3.99	3.77	3.89	3.75	3.79											
130	4.43	4.23	4.18	4.67	4.01	3.93	3.95	3.99											
135	4.85	4.46	4.40	4.40	4.20	4.13	4.22	4.23											
140	4.88	4.70	4.49	4.63	4.40	4.36	4.47	4.46											
145	5.06	4.95	4.68	4.83	4.65	4.54	4.75	4.65											
150	5.06	5.13	4.94	5.08	4.81	4.70	4.83	4.80											
155	5.44	5.31	5.40	5.19	5.02	4.83	5.07	5.00											
160	5.53	5.44	5.58	5.40	5.14	5.01	5.20	5.12											
165	5.66	5.52	5.71	5.47	5.33	5.16	5.82	5.28											
170	5.63	5.59	5.58	5.54	5.53	5.38	5.55	5.49											
175	5.60	5.73	5.66	5.67	5.54	5.56	5.58	5.58											
180	5.75	5.72	6.19	5.71	5.73	5.83	5.82	5.82											

C Range: 0 - 360DEG
 C Interval: 45.0DEG
 Test Speed: HIGH
 Temperature:25.3DEG
 Operators:DAMIN
 Test Date:2021-11-11

γ Range: 0 - 180DEG
 γ Interval: 1.0DEG
 Test System:EVERFINE GO-2000A_V1 SYSTEM V2.0.276
 Humidity:65.0%
 Test Distance:10.237m [K=1.0000]
 Remarks: