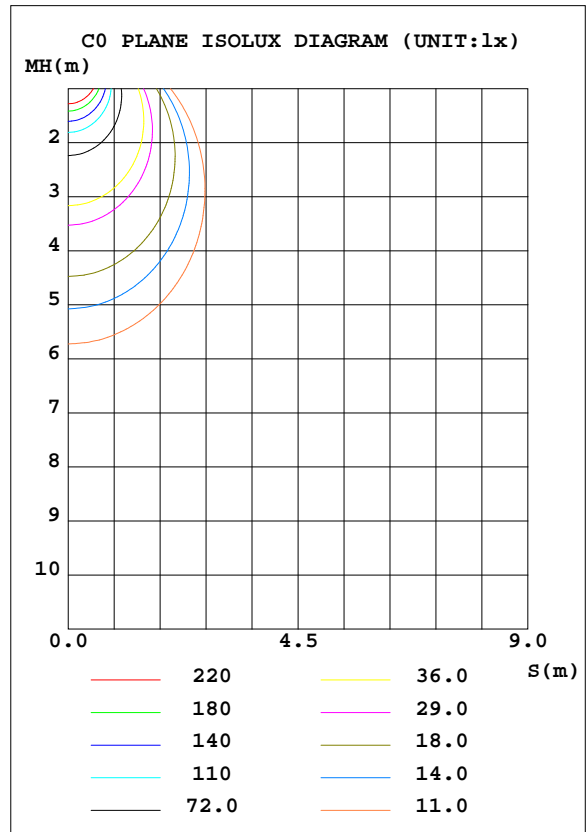
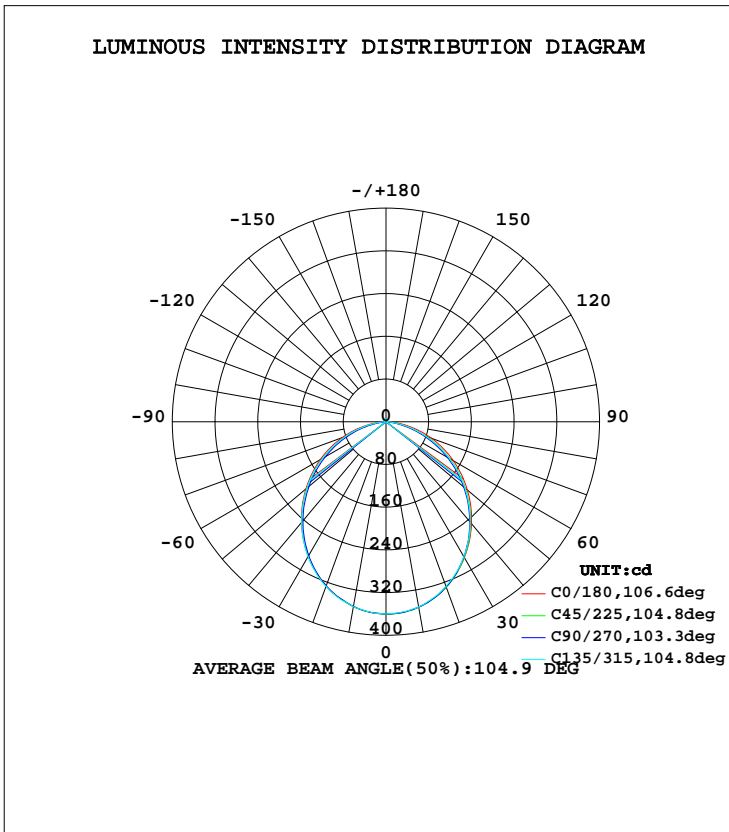


LUMINAIRE PHOTOMETRIC TEST REPORT

Test:U:240.2V I:0.0370A P:8.250W PF:0.9130 Lamp Flux:957.916x1 lm		
NAME: ID-S-10W-CC	TYPE:8W	WEIGHT:
DIM.:	SPEC.:3000K	SERIAL No.:1
MFR.:	SUR.:0.04	PROTECTION ANGLE:

DATA OF LAMP		PHOTOMETRIC DATA Eff: 116.11 lm/W			
MODEL	ID-S-10W-CC	I <sub>max</sub> (cd)	360.3	S/MH(C0/180)	1.21
NOMINAL POWER(W)	8	LOR(%)	100.0	S/MH(C90/270)	1.20
RATED VOLTAGE(V)	240	TOTAL FLUX(lm)	957.92	η UP, DN(C0-180)	1.2, 48.6
NOMINAL FLUX(lm)	957.916	CIE CLASS	DIRECT	η UP, DN(C180-360)	1.2, 49.0
LAMPS INSIDE	1	η up(%)	2.4	CIBSE SHR NOM	1.25
TEST VOLTAGE(V)	240.2	η down(%)	97.6	CIBSE SHR MAX	1.35



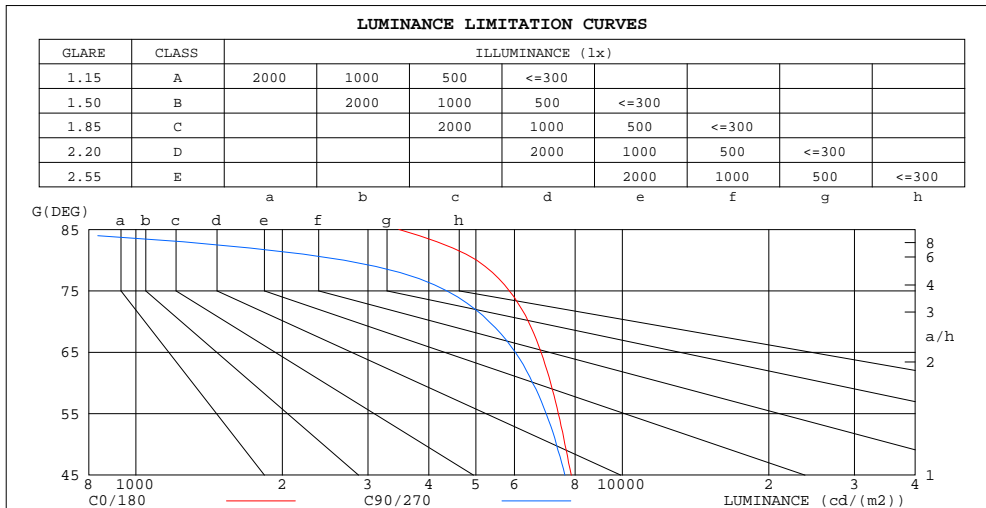
C Range: 0 - 360DEG  
 C Interval: 45.0DEG  
 Test Speed: HIGH  
 Temperature:25.3DEG  
 Operators:DAMIN  
 Test Date:2021-11-11

γ Range: 0 - 180DEG  
 γ Interval: 1.0DEG  
 Test System:EVERFINE GO-2000A\_V1 SYSTEM V2.0.276  
 Humidity:65.0%  
 Test Distance:10.237m [K=1.0000]  
 Remarks:

ZONAL FLUX DIAGRAM  
AND LUMINANCE LIMITATION CURVES

ZONAL FLUX DIAGRAM:

$\gamma$	C0	C45	C90	C135	C180	C225	C270	C315	$\gamma$	$\Phi$ zone	$\Phi$ total	$\Phi$ lum,lamp
10	351.1	351.7	351.4	351.4	352.3	352.5	352.6	352.2	0- 10	33.98	33.98	3.55,3.55
20	327.2	327.6	327.2	328.2	329.5	329.9	328.8	328.1	10- 20	96.38	130.4	13.6,13.6
30	291.2	290.8	289.4	292.0	293.6	293.4	292.1	291.8	20- 30	143.5	273.8	28.6,28.6
40	246.1	244.8	242.1	245.5	249.3	246.6	244.5	245.5	30- 40	168.6	442.4	46.2,46.2
50	195.8	192.5	188.2	193.5	199.1	194.4	190.1	193.1	40- 50	169.6	612.1	63.9,63.9
60	142.3	137.0	130.8	137.5	145.3	138.1	131.9	136.7	50- 60	148.1	760.1	79.4,79.4
70	87.60	79.88	72.80	80.70	90.71	80.37	73.17	79.38	60- 70	107.8	868.0	90.6,90.6
80	34.82	26.28	18.61	27.05	37.80	26.08	20.40	26.40	70- 80	56.19	924.2	96.5,96.5
90	2.186	2.434	2.071	2.299	2.319	2.612	2.258	2.800	80- 90	10.66	934.8	97.6,97.6
100	2.816	2.978	2.728	2.912	2.501	3.063	2.851	2.949	90-100	2.951	937.8	97.9,97.9
110	3.196	3.280	3.399	3.215	2.971	3.059	2.858	3.023	100-110	3.088	940.9	98.2,98.2
120	3.776	3.660	3.627	3.672	3.520	3.453	3.300	3.430	110-120	3.288	944.1	98.6,98.6
130	4.291	4.083	4.212	4.002	3.864	3.730	3.736	3.930	120-130	3.372	947.5	98.9,98.9
140	4.614	4.448	4.410	4.437	4.278	4.165	4.334	4.274	130-140	3.234	950.7	99.3,99.3
150	4.853	4.913	4.789	4.873	4.671	4.504	4.755	4.619	140-150	2.869	953.6	99.6,99.6
160	5.331	5.293	5.521	5.162	4.980	4.785	4.966	4.949	150-160	2.300	955.9	99.8,99.8
170	5.671	5.454	5.388	5.386	5.156	5.179	5.261	5.259	160-170	1.483	957.4	99.9,99.9
180	5.605	5.728	5.585	5.442	5.507	5.538	5.550	5.885	170-180	0.5164	957.9	100,100
DEG	LUMINOUS INTENSITY:cd									UNIT:lm		



LUMINANCE cd/(m2)		
G(DEG)	C0/180	C90/270
85	3472	783
80	5018	2678
75	5856	4359
70	6410	5320
65	6805	6023
60	7124	6538
55	7385	6972
50	7622	7317
45	7852	7621

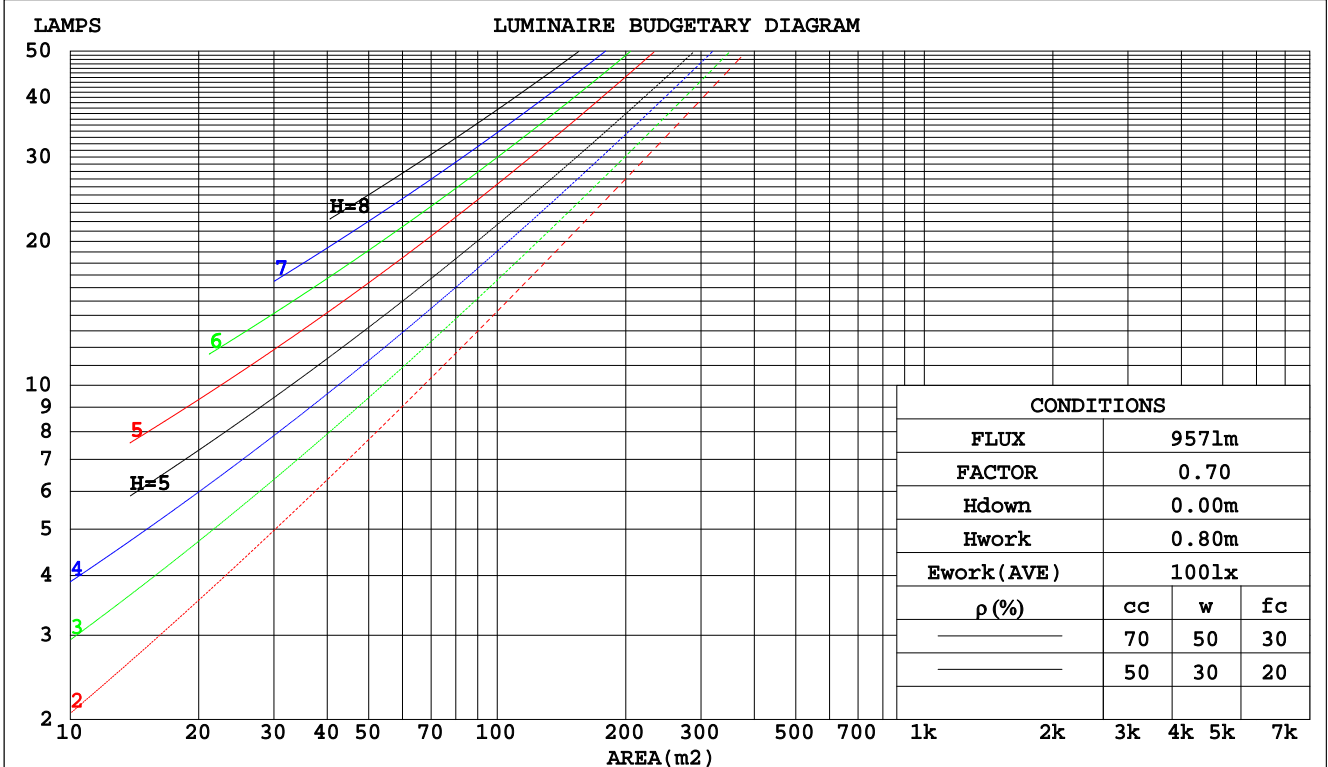
C Range: 0 - 360DEG  
C Interval: 45.0DEG  
Test Speed: HIGH  
Temperature:25.3DEG  
Operators:DAMIN  
Test Date:2021-11-11

$\gamma$  Range: 0 - 180DEG  
 $\gamma$  Interval: 1.0DEG  
Test System:EVERFINE GO-2000A\_V1 SYSTEM V2.0.276  
Humidity:65.0%  
Test Distance:10.237m [K=1.0000]  
Remarks:

CU AND LUMINAIRE BUDGETARY ESTIMATE DIAGRAM

Test:U:240.2V I:0.0370A P:8.250W PF:0.9130 Lamp Flux:957.916x1 lm		
NAME: ID-S-10W-CC	TYPE:8W	WEIGHT:
DIM.:	SPEC.:3000K	SERIAL No.:1
MFR.:	SUR.:0.04	PROTECTION ANGLE:

pcc	80%			70%			50%			30%			10%			0
	50%	30%	10%	50%	30%	10%	50%	30%	10%	50%	30%	10%	50%	30%	10%	0
pw																
pfc	20%			20%			20%			20%			20%			0
RCR	RCR:Room Cavity Ratio															
	Coefficients of Utilization(CU)															
0.0	1.18	1.18	1.18	1.15	1.15	1.15	1.10	1.10	1.10	1.05	1.05	1.05	.00	.00	.00	.98
1.0	1.04	1.00	.96	1.02	.98	.95	.97	.94	.91	.93	.90	.88	.89	.87	.85	.83
2.0	.91	.85	.79	.89	.83	.78	.85	.80	.76	.82	.77	.74	.78	.75	.72	.69
3.0	.80	.72	.66	.79	.71	.65	.75	.69	.64	.72	.67	.62	.69	.65	.61	.59
4.0	.71	.63	.56	.70	.62	.56	.67	.60	.55	.64	.59	.54	.62	.57	.53	.51
5.0	.64	.55	.49	.63	.54	.48	.60	.53	.47	.58	.52	.47	.56	.50	.46	.44
6.0	.58	.49	.42	.56	.48	.42	.54	.47	.42	.53	.46	.41	.51	.45	.41	.38
7.0	.52	.44	.38	.51	.43	.37	.50	.42	.37	.48	.41	.37	.46	.41	.36	.34
8.0	.48	.39	.34	.47	.39	.33	.45	.38	.33	.44	.37	.33	.43	.37	.32	.30
9.0	.44	.36	.30	.43	.35	.30	.42	.35	.30	.41	.34	.30	.39	.34	.29	.27
10.0	.40	.33	.27	.40	.32	.27	.39	.32	.27	.38	.31	.27	.37	.31	.27	.25



C Range: 0 - 360DEG  
 C Interval: 45.0DEG  
 Test Speed: HIGH  
 Temperature: 25.3DEG  
 Operators: DAMIN  
 Test Date: 2021-11-11

γ Range: 0 - 180DEG  
 γ Interval: 1.0DEG  
 Test System: EVERFINE GO-2000A\_V1 SYSTEM V2.0.276  
 Humidity: 65.0%  
 Test Distance: 10.237m [K=1.0000]  
 Remarks:

WEC AND CCEC

Test:U:240.2V I:0.0370A P:8.250W PF:0.9130 Lamp Flux:957.916x1 lm		
NAME: ID-S-10W-CC	TYPE:8W	WEIGHT:
DIM.:	SPEC.:3000K	SERIAL No.:1
MFR.:	SUR.:0.04	PROTECTION ANGLE:

ρcc	80%			70%			50%			30%			10%			0
ρw	50%	30%	10%	50%	30%	10%	50%	30%	10%	50%	30%	10%	50%	30%	10%	0
ρfc	20%			20%			20%			20%			20%			0
RCR	RCR:Room Cavity Ratio						Wall Exitance Coefficients(WEC)									
0.0																
1.0	.293	.166	.053	.285	.163	.052	.270	.155	.050	.257	.148	.048	.245	.142	.046	
2.0	.279	.153	.047	.272	.150	.046	.259	.144	.045	.247	.139	.043	.236	.134	.042	
3.0	.260	.138	.041	.254	.136	.041	.243	.131	.040	.232	.127	.039	.222	.123	.038	
4.0	.241	.125	.037	.236	.123	.036	.226	.120	.036	.216	.116	.035	.207	.113	.034	
5.0	.224	.114	.033	.219	.112	.033	.210	.109	.032	.202	.106	.032	.194	.103	.031	
6.0	.208	.104	.030	.204	.103	.030	.196	.100	.029	.188	.098	.029	.181	.095	.028	
7.0	.194	.096	.027	.190	.095	.027	.183	.093	.027	.176	.090	.026	.170	.088	.026	
8.0	.182	.089	.025	.178	.088	.025	.172	.086	.024	.166	.084	.024	.160	.082	.024	
9.0	.171	.083	.023	.167	.082	.023	.162	.080	.023	.156	.078	.022	.151	.077	.022	
10.0	.161	.077	.021	.158	.076	.021	.152	.075	.021	.147	.073	.021	.142	.072	.021	

ρcc	80%			70%			50%			30%			10%			0
ρw	50%	30%	10%	50%	30%	10%	50%	30%	10%	50%	30%	10%	50%	30%	10%	0
ρfc	20%			20%			20%			20%			20%			0
RCR	RCR:Room Cavity Ratio						Ceiling Cavity Exitance Coefficients(CCEC)									
0.0	.209	.209	.209	.178	.178	.178	.122	.122	.122	.070	.070	.070	.022	.022	.022	
1.0	.198	.175	.154	.169	.150	.133	.116	.103	.092	.067	.060	.053	.021	.019	.017	
2.0	.189	.151	.118	.162	.130	.102	.111	.090	.071	.064	.052	.042	.021	.017	.014	
3.0	.181	.133	.094	.155	.115	.082	.107	.080	.057	.062	.047	.034	.020	.015	.011	
4.0	.174	.120	.078	.149	.103	.068	.103	.072	.048	.059	.042	.028	.019	.014	.009	
5.0	.166	.109	.067	.143	.095	.058	.098	.066	.041	.057	.039	.024	.018	.013	.008	
6.0	.159	.101	.059	.137	.087	.051	.095	.061	.036	.055	.036	.022	.018	.012	.007	
7.0	.153	.094	.053	.131	.081	.046	.091	.057	.033	.053	.034	.019	.017	.011	.006	
8.0	.146	.088	.048	.126	.077	.042	.087	.054	.030	.051	.032	.018	.016	.010	.006	
9.0	.140	.083	.045	.121	.072	.039	.084	.051	.028	.049	.030	.016	.016	.010	.005	
10.0	.135	.079	.042	.116	.069	.037	.081	.048	.026	.047	.029	.015	.015	.009	.005	

C Range: 0 - 360DEG  
 C Interval: 45.0DEG  
 Test Speed: HIGH  
 Temperature:25.3DEG  
 Operators:DAMIN  
 Test Date:2021-11-11

γ Range: 0 - 180DEG  
 γ Interval: 1.0DEG  
 Test System:EVERFINE GO-2000A\_V1 SYSTEM V2.0.276  
 Humidity:65.0%  
 Test Distance:10.237m [K=1.0000]  
 Remarks:

Uncorrected UGR Table

Test:U:240.2V I:0.0370A P:8.250W PF:0.9130 Lamp Flux:957.916x1 lm										
NAME: ID-S-10W-CC					TYPE:8W			WEIGHT:		
DIM.:					SPEC.:3000K			SERIAL No.:1		
MFR.:					SUR.:0.04			PROTECTION ANGLE:		
ceiling/cavity	0.7	0.7	0.5	0.5	0.3	0.7	0.7	0.5	0.5	0.3
walls	0.5	0.3	0.5	0.3	0.3	0.5	0.3	0.5	0.3	0.3
working plane	0.2	0.2	0.2	0.2	0.2	0.2	0.2	0.2	0.2	0.2
Room dimensions	Viewed crosswise					Viewed endwise				
x = 2H y = 2H	19.6	21.1	19.9	21.3	21.6	19.4	20.8	19.7	21.1	21.3
3H	21.1	22.4	21.4	22.7	23.0	20.6	21.9	20.9	22.2	22.5
4H	21.6	22.9	22.0	23.2	23.5	21.0	22.3	21.3	22.6	22.9
6H	22.0	23.2	22.4	23.5	23.8	21.1	22.3	21.5	22.7	23.0
8H	22.1	23.2	22.5	23.6	23.9	21.1	22.3	21.5	22.6	22.9
12H	22.1	23.2	22.5	23.6	23.9	21.1	22.2	21.5	22.5	22.9
4H 2H	20.1	21.4	20.5	21.7	22.0	19.9	21.2	20.3	21.5	21.8
3H	21.8	22.9	22.1	23.2	23.5	21.3	22.4	21.7	22.8	23.1
4H	22.4	23.4	22.8	23.8	24.2	21.8	22.9	22.3	23.2	23.6
6H	22.9	23.8	23.3	24.2	24.6	22.1	23.0	22.5	23.4	23.8
8H	23.0	23.9	23.5	24.3	24.7	22.1	22.9	22.5	23.3	23.8
12H	23.1	23.8	23.5	24.3	24.7	22.0	22.8	22.5	23.2	23.7
8H 4H	22.6	23.4	23.0	23.8	24.3	22.1	22.9	22.5	23.3	23.7
6H	23.2	23.8	23.6	24.3	24.8	22.4	23.1	22.9	23.5	24.0
8H	23.3	23.9	23.8	24.4	24.9	22.4	23.0	22.9	23.5	24.0
12H	23.4	23.9	23.9	24.4	25.0	22.4	22.9	22.9	23.4	23.9
12H 4H	22.6	23.3	23.0	23.7	24.2	22.1	22.8	22.5	23.2	23.7
6H	23.2	23.8	23.7	24.2	24.7	22.4	23.0	22.9	23.5	24.0
8H	23.4	23.9	23.9	24.4	24.9	22.4	23.0	23.0	23.5	24.0
Variations with the observer position at spacings:										
S = 1.0H	+ 0.2 / - 0.2					+ 0.2 / - 0.3				
1.5H	+ 0.2 / - 0.3					+ 0.2 / - 0.4				
2.0H	+ 0.3 / - 0.3					+ 0.3 / - 0.4				

CIE Pub.117 Corrected 957.9 lm Total Lamp Luminous Flux. (8log(F/F0) = -0.1)

C Range: 0 - 360DEG  
 C Interval: 45.0DEG  
 Test Speed: HIGH  
 Temperature:25.3DEG  
 Operators:DAMIN  
 Test Date:2021-11-11

γ Range: 0 - 180DEG  
 γ Interval: 1.0DEG  
 Test System:EVERFINE GO-2000A\_V1 SYSTEM V2.0.276  
 Humidity:65.0%  
 Test Distance:10.237m [K=1.0000]  
 Remarks:

UTILIZATION FACTORS TABLE

Test:U:240.2V I:0.0370A P:8.250W PF:0.9130 Lamp Flux:957.916x1 lm		
NAME: ID-S-10W-CC	TYPE:8W	WEIGHT:
DIM.:	SPEC.:3000K	SERIAL No.:1
MFR.:	SUR.:0.04	PROTECTION ANGLE:

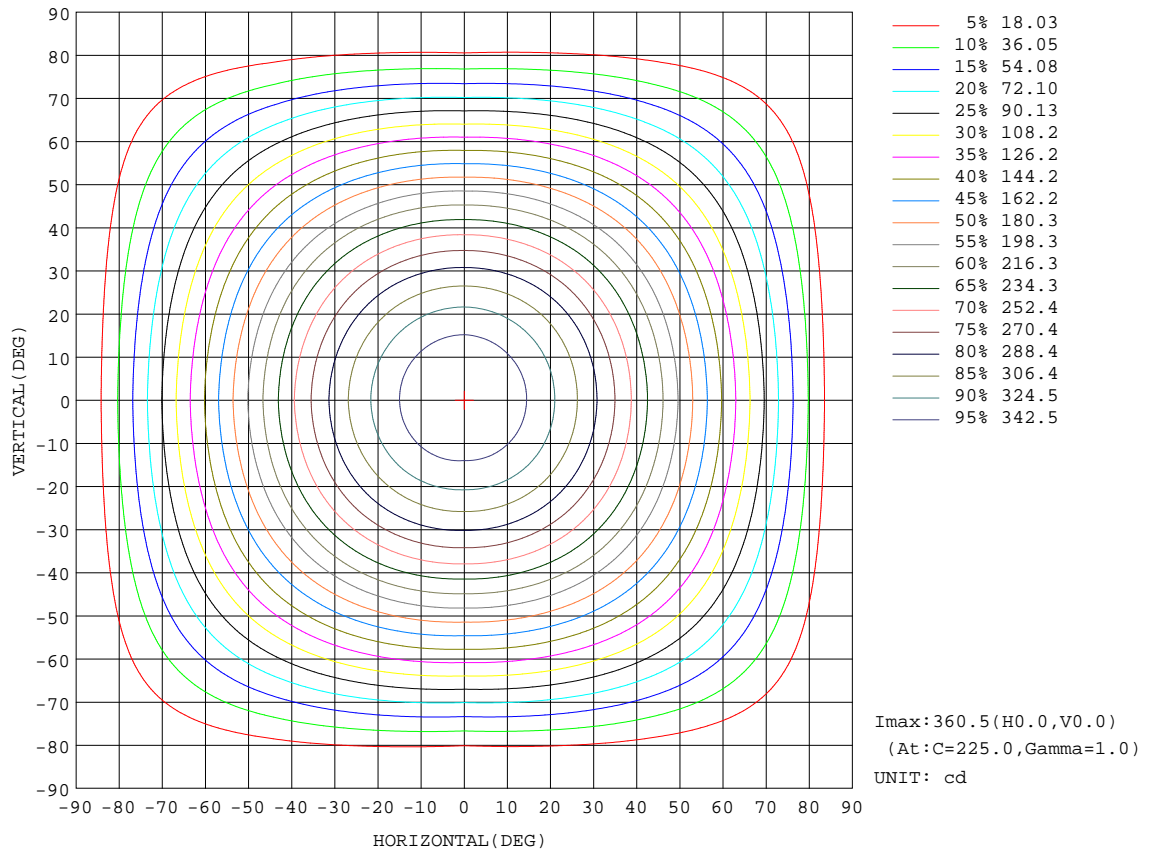
REFLECTANCE										
Ceiling	0.8	0.8	0.8	0.7	0.7	0.7	0.5	0.5	0.5	0
Walls	0.7	0.5	0.3	0.7	0.5	0.3	0.7	0.5	0.3	0
Working plane	0.2	0.2	0.2	0.2	0.2	0.2	0.2	0.2	0.2	0
ROOM INDEX	UTILIZATION FACTORS(PERCENT) $k(RI) \times RCR = 5$									
k = 0.60	58	47	40	57	47	40	56	46	40	33
0.80	68	57	50	67	57	50	65	56	49	42
1.00	77	66	59	75	65	58	73	66	58	51
1.25	84	74	67	82	73	66	79	71	65	58
1.50	89	79	72	87	78	72	84	76	70	63
2.00	95	87	81	93	86	80	90	83	78	70
2.50	99	92	86	97	90	85	93	87	83	74
3.00	102	96	91	100	94	89	96	91	87	78
4.00	106	101	96	104	99	95	99	95	92	82
5.00	109	104	100	106	102	98	101	98	95	85
ROOM INDEX	UF(total)									Direct
According to DIN EN 13032-2 2004			Suspended				SHRNOM = 1.25			

C Range: 0 - 360DEG  
 C Interval: 45.0DEG  
 Test Speed: HIGH  
 Temperature:25.3DEG  
 Operators:DAMIN  
 Test Date:2021-11-11

$\gamma$  Range: 0 - 180DEG  
 $\gamma$  Interval: 1.0DEG  
 Test System:EVERFINE GO-2000A\_V1 SYSTEM V2.0.276  
 Humidity:65.0%  
 Test Distance:10.237m [K=1.0000]  
 Remarks:

ISOCANDELA DIAGRAM

Test:U:240.2V I:0.0370A P:8.250W PF:0.9130 Lamp Flux:957.916x1 lm		
NAME: ID-S-10W-CC	TYPE:8W	WEIGHT:
DIM.:	SPEC.:3000K	SERIAL No.:1
MFR.:	SUR.:0.04	PROTECTION ANGLE:

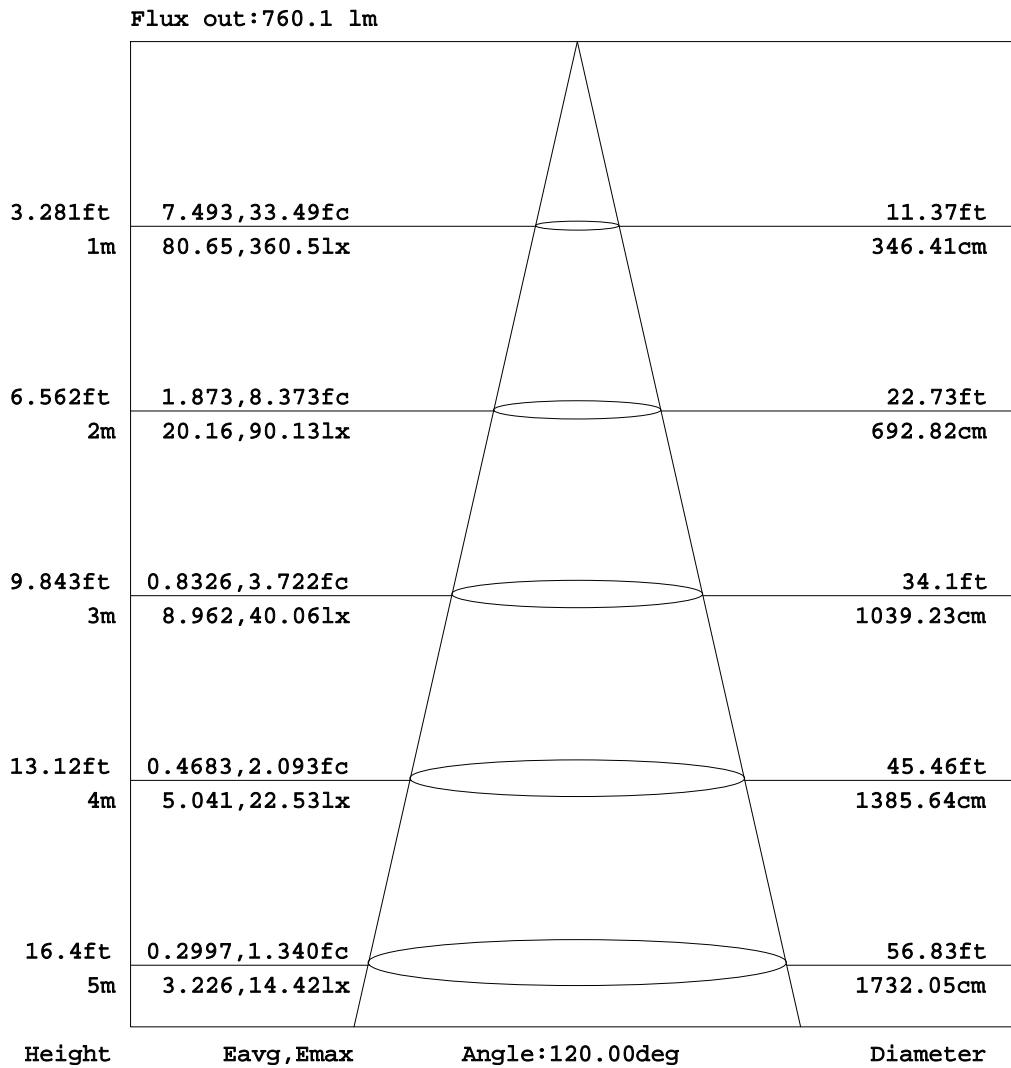


C Range: 0 - 360DEG  
 C Interval: 45.0DEG  
 Test Speed: HIGH  
 Temperature: 25.3DEG  
 Operators: DAMIN  
 Test Date: 2021-11-11

γ Range: 0 - 180DEG  
 γ Interval: 1.0DEG  
 Test System: EVERFINE GO-2000A\_V1 SYSTEM V2.0.276  
 Humidity: 65.0%  
 Test Distance: 10.237m [K=1.0000]  
 Remarks:

AAI Figure

Test:U:240.2V I:0.0370A P:8.250W PF:0.9130 Lamp Flux:957.916x1 lm		
NAME: ID-S-10W-CC	TYPE:8W	WEIGHT:
DIM.:	SPEC.:3000K	SERIAL No.:1
MFR.:	SUR.:0.04	PROTECTION ANGLE:



Note:The Curves indicate the illuminated area and the average illumination when the luminaire is at different distance.

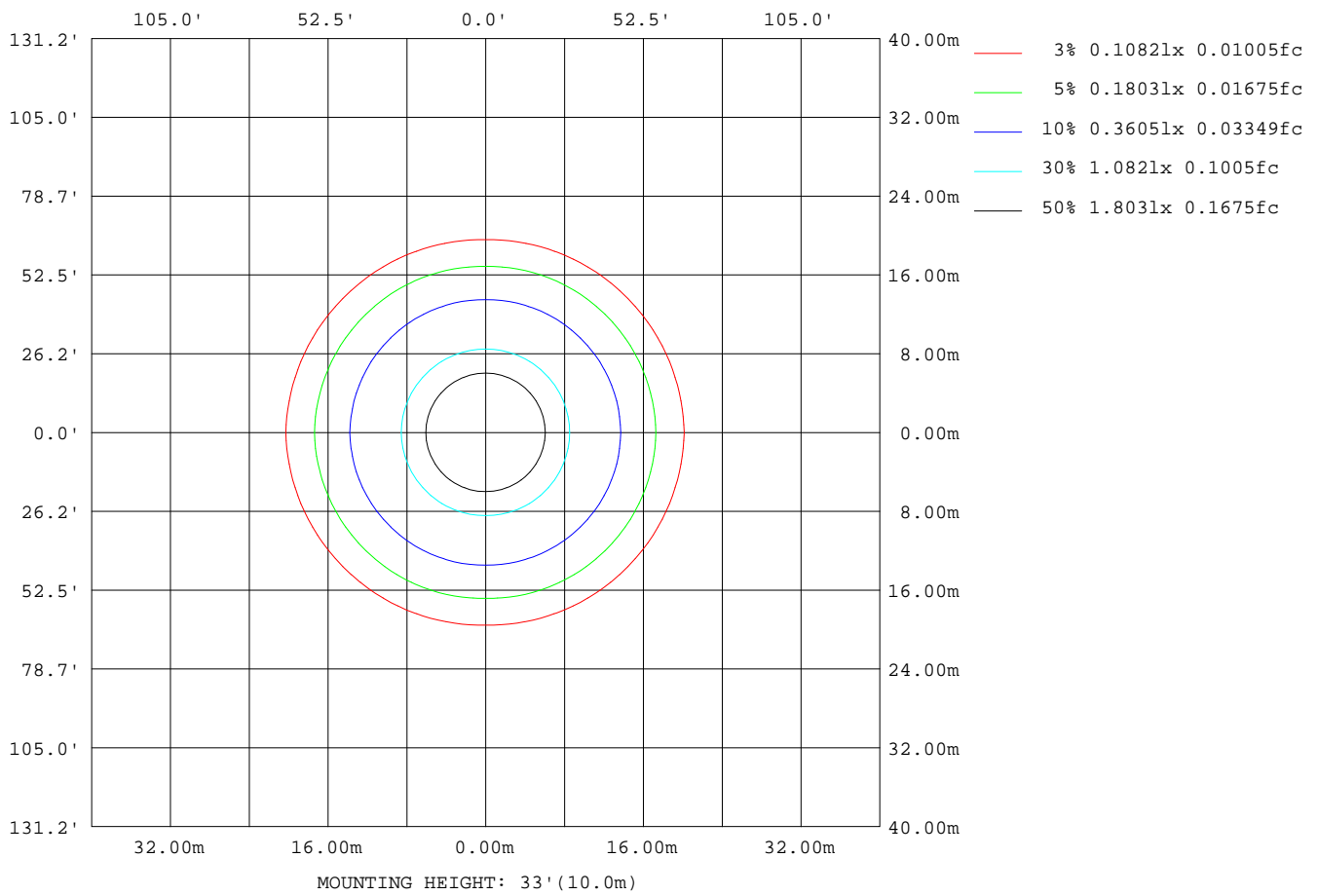
C Range: 0 - 360DEG  
 C Interval: 45.0DEG  
 Test Speed: HIGH  
 Temperature:25.3DEG  
 Operators:DAMIN  
 Test Date:2021-11-11

γ Range: 0 - 180DEG  
 γ Interval: 1.0DEG  
 Test System:EVERFINE GO-2000A\_V1 SYSTEM V2.0.276  
 Humidity:65.0%  
 Test Distance:10.237m [K=1.0000]  
 Remarks:



**ISOLUX DIAGRAM**

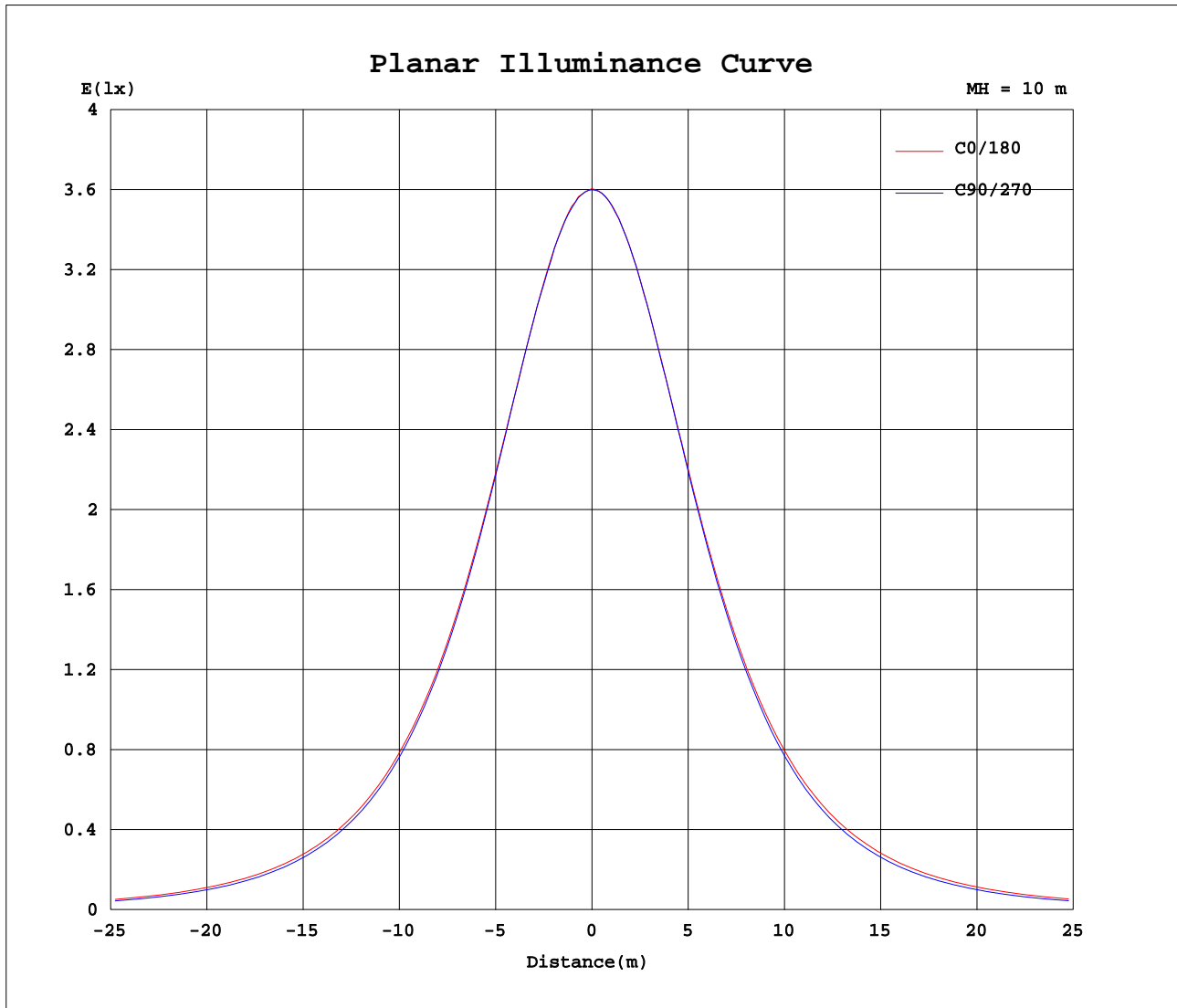
Test:U:240.2V I:0.0370A P:8.250W PF:0.9130 Lamp Flux:957.916x1 lm		
NAME: ID-S-10W-CC	TYPE:8W	WEIGHT:
DIM.:	SPEC.:3000K	SERIAL No.:1
MFR.:	SUR.:0.04	PROTECTION ANGLE:



C Range: 0 - 360DEG  
 C Interval: 45.0DEG  
 Test Speed: HIGH  
 Temperature:25.3DEG  
 Operators:DAMIN  
 Test Date:2021-11-11

γ Range: 0 - 180DEG  
 γ Interval: 1.0DEG  
 Test System:EVERFINE GO-2000A\_V1 SYSTEM V2.0.276  
 Humidity:65.0%  
 Test Distance:10.237m [K=1.0000]  
 Remarks:

Planar Illuminance Curve



C Range: 0 - 360DEG  
 C Interval: 45.0DEG  
 Test Speed: HIGH  
 Temperature: 25.3DEG  
 Operators: DAMIN  
 Test Date: 2021-11-11

$\gamma$  Range: 0 - 180DEG  
 $\gamma$  Interval: 1.0DEG  
 Test System: EVERFINE GO-2000A\_V1 SYSTEM V2.0.276  
 Humidity: 65.0%  
 Test Distance: 10.237m [K=1.0000]  
 Remarks:

LUMINOUS DISTRIBUTION INTENSITY DATA

Test:U:240.2V I:0.0370A P:8.250W PF:0.9130 Lamp Flux:957.916x1 lm		
NAME: ID-S-10W-CC	TYPE:8W	WEIGHT:
DIM.:	SPEC.:3000K	SERIAL No.:1
MFR.:	SUR.:0.04	PROTECTION ANGLE:

Table--1

UNIT: cd

C(DEG)\γ (DEG)	0	45	90	135	180	225	270	315											
0	360	360	360	360	360	360	360	360											
5	357	358	358	357	358	359	359	358											
10	351	352	351	351	352	353	353	352											
15	341	341	341	342	342	343	343	342											
20	327	328	327	328	329	330	329	328											
25	311	311	310	311	313	313	313	311											
30	291	291	289	292	294	293	292	292											
35	270	269	267	270	272	271	269	270											
40	246	245	242	246	249	247	245	245											
45	222	219	216	220	225	221	218	220											
50	196	192	188	193	199	194	190	193											
55	169	165	160	166	173	167	161	165											
60	142	137	131	137	145	138	132	137											
65	115	108	102	109	118	109	102	108											
70	87.6	79.9	72.8	80.7	90.7	80.4	73.2	79.4											
75	60.6	52.2	45.1	53.0	63.9	52.3	45.4	51.8											
80	34.8	26.3	18.6	27.0	37.8	26.1	20.4	26.4											
85	12.1	4.47	2.73	4.61	14.6	5.73	3.33	6.09											
90	2.19	2.43	2.07	2.30	2.32	2.61	2.26	2.80											
95	2.44	2.58	2.87	2.53	2.49	2.71	3.87	3.09											
100	2.82	2.98	2.73	2.91	2.50	3.06	2.85	2.95											
105	2.93	3.13	3.26	3.02	2.69	2.89	2.65	2.88											
110	3.20	3.28	3.40	3.22	2.97	3.06	2.86	3.02											
115	3.47	3.42	3.27	3.44	3.22	3.26	3.08	3.24											
120	3.78	3.66	3.63	3.67	3.52	3.45	3.30	3.43											
125	4.04	3.91	3.92	3.83	3.65	3.54	3.55	3.65											
130	4.29	4.08	4.21	4.00	3.86	3.73	3.74	3.93											
135	4.46	4.24	4.38	4.23	4.07	3.93	4.00	4.11											
140	4.61	4.45	4.41	4.44	4.28	4.17	4.33	4.27											
145	4.76	4.71	4.60	4.58	4.48	4.34	4.56	4.49											
150	4.85	4.91	4.79	4.87	4.67	4.50	4.75	4.62											
155	5.23	5.12	5.25	5.01	4.94	4.67	4.94	4.75											
160	5.33	5.29	5.52	5.16	4.98	4.79	4.97	4.95											
165	5.54	5.36	5.68	5.24	5.09	5.11	5.06	5.10											
170	5.67	5.45	5.39	5.39	5.16	5.18	5.26	5.26											
175	5.46	5.53	5.47	5.54	5.28	5.34	5.41	5.44											
180	5.61	5.73	5.58	5.44	5.51	5.54	5.55	5.89											

C Range: 0 - 360DEG  
 C Interval: 45.0DEG  
 Test Speed: HIGH  
 Temperature:25.3DEG  
 Operators:DAMIN  
 Test Date:2021-11-11

γ Range: 0 - 180DEG  
 γ Interval: 1.0DEG  
 Test System:EVERFINE GO-2000A\_V1 SYSTEM V2.0.276  
 Humidity:65.0%  
 Test Distance:10.237m [K=1.0000]  
 Remarks: