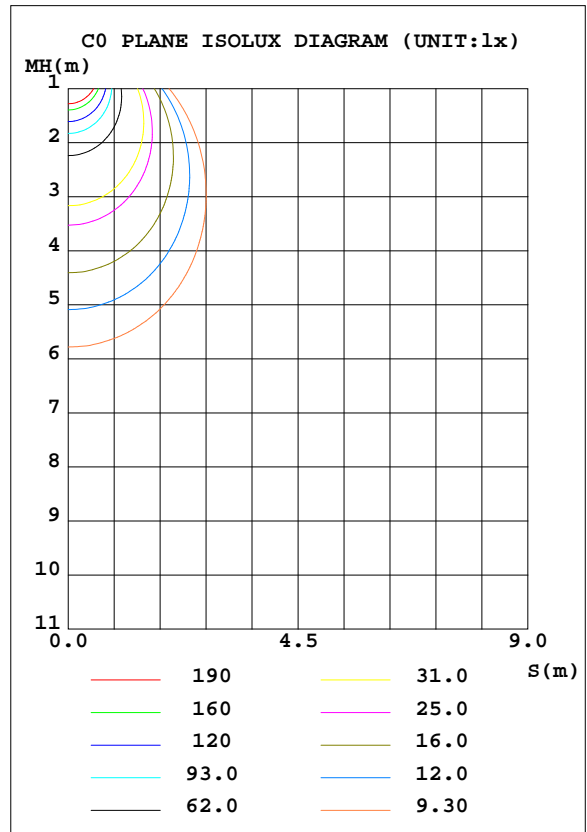
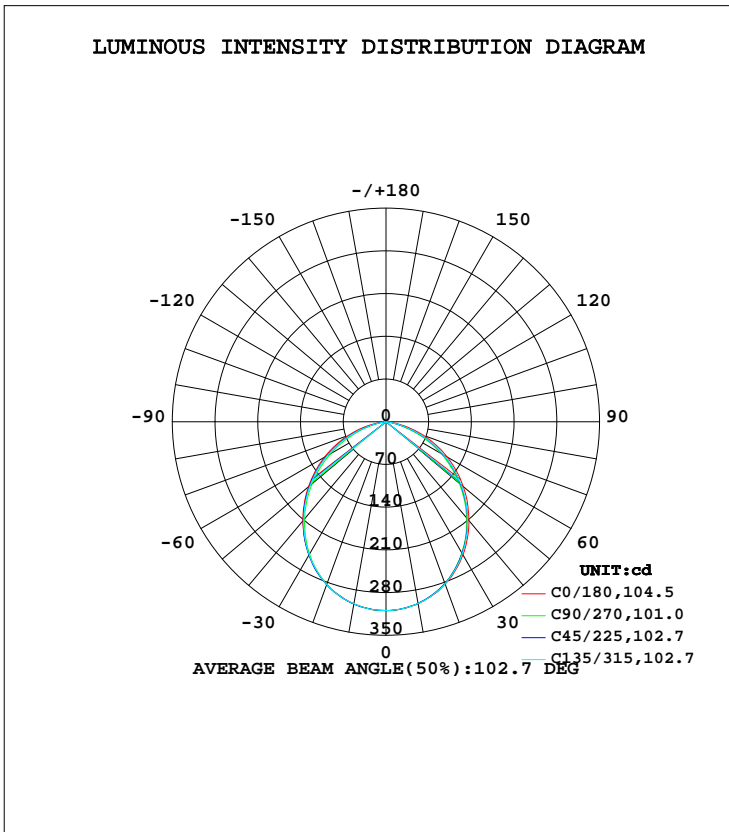


LUMINAIRE PHOTOMETRIC TEST REPORT

Test:U:240.10V I:0.0390A P:8.7900W PF:0.9230 Freq:49.99Hz Lamp Flux:776.574x1 lm		
NAME: ID-R-8W-CC 5700K	TYPE: 8W	WEIGHT:
SPEC.: 5700K	DIM.:	SERIAL No.:
MFR.:	SUR.: 0.005	Shielding Angle:

DATA OF LAMP		PHOTOMETRIC DATA Eff: 88.35 lm/W			
MODEL	ID-R-8W-CC 5700K	I _{max} (cd)	309.6	S/MH(C0/180)	1.22
NOMINAL POWER(W)	8	LOR(%)	100.0	S/MH(C90/270)	1.20
RATED VOLTAGE(V)	240	TOTAL FLUX(lm)	776.57	η UP, DN(C0-180)	0.7,49.6
NOMINAL FLUX(lm)	776.574	CIE CLASS	DIRECT	η UP, DN(C180-360)	0.6,49.1
LAMPS INSIDE	1	η up(%)	1.2	CIBSE SHR NOM	1.25
TEST VOLTAGE(V)	240	η down(%)	98.8	CIBSE SHR MAX	1.35



C Range: 0 - 360DEG
 C Interval: 45.0DEG
 Test Speed: HIGH
 Temperature:25.3DEG
 Operators:
 Test Date:2022-09-23

γ Range: 0 - 180DEG
 γ Interval: 1.0DEG
 Test System:EVERFINE GO-2000A_V1 SYSTEM V2.00.446
 Humidity:65.0%
 Test Distance:10.450m [K=1.0000]
 Remarks:

ZONAL FLUX DIAGRAM

ZONAL FLUX DIAGRAM:

γ	C0	C45	C90	C135	C180	C225	C270	C315	γ	Φ zone	Φ total	%lum, lamp
10	303.0	303.5	303.1	303.0	302.8	302.2	302.5	302.4	0- 10	29.22	29.22	3.76,3.76
20	283.6	284.5	283.6	283.8	283.4	281.9	281.9	282.5	10- 20	83.06	112.3	14.5,14.5
30	252.4	252.7	250.6	251.8	252.1	249.2	248.5	249.8	20- 30	123.6	235.8	30.4,30.4
40	212.0	211.1	207.6	210.0	211.5	207.5	205.7	208.3	30- 40	144.4	380.2	49,49
50	165.8	163.6	158.3	162.1	165.4	159.8	156.8	160.8	40- 50	143.3	523.5	67.4,67.4
60	116.6	112.2	105.0	110.8	116.1	108.5	104.0	109.4	50- 60	121.7	645.2	83.1,83.1
70	66.27	58.91	50.21	57.11	65.59	55.81	50.00	56.85	60- 70	83.01	728.2	93.8,93.8
80	18.60	11.56	7.929	10.74	18.07	10.10	7.849	10.56	70- 80	34.83	763.0	98.3,98.3
90	0.3167	0.2574	0.2205	0.2527	0.2562	0.2194	0.1911	0.2501	80- 90	3.960	767.0	98.8,98.8
100	0.5969	0.5998	0.4770	0.5960	0.5481	0.4602	0.4703	0.4485	90-100	0.4123	767.4	98.8,98.8
110	1.057	1.032	0.9476	1.038	0.9490	0.8840	0.8387	0.8457	100-110	0.7710	768.2	98.9,98.9
120	1.626	1.537	1.475	1.516	1.452	1.330	1.331	1.294	110-120	1.187	769.4	99.1,99.1
130	2.094	2.004	2.012	1.987	1.861	1.755	1.770	1.765	120-130	1.502	770.9	99.3,99.3
140	2.487	2.480	2.321	2.436	2.305	2.201	2.249	2.154	130-140	1.633	772.5	99.5,99.5
150	2.866	2.830	2.900	2.795	2.597	2.544	2.609	2.552	140-150	1.569	774.1	99.7,99.7
160	3.130	3.123	3.232	3.097	2.882	2.794	2.865	2.816	150-160	1.321	775.4	99.8,99.8
170	3.246	3.313	3.247	3.273	3.130	3.123	3.130	3.103	160-170	0.8752	776.3	100,100
180	3.378	3.437	3.372	3.412	3.370	3.452	3.372	3.398	170-180	0.3117	776.6	100,100
DEG	LUMINOUS INTENSITY:cd									UNIT:lm		

Conical surface Flux(90deg): 453.33 lm

%lum = 58.4%
 %lamp = 58.4%

Conical surface Flux(120deg): 645.19 lm

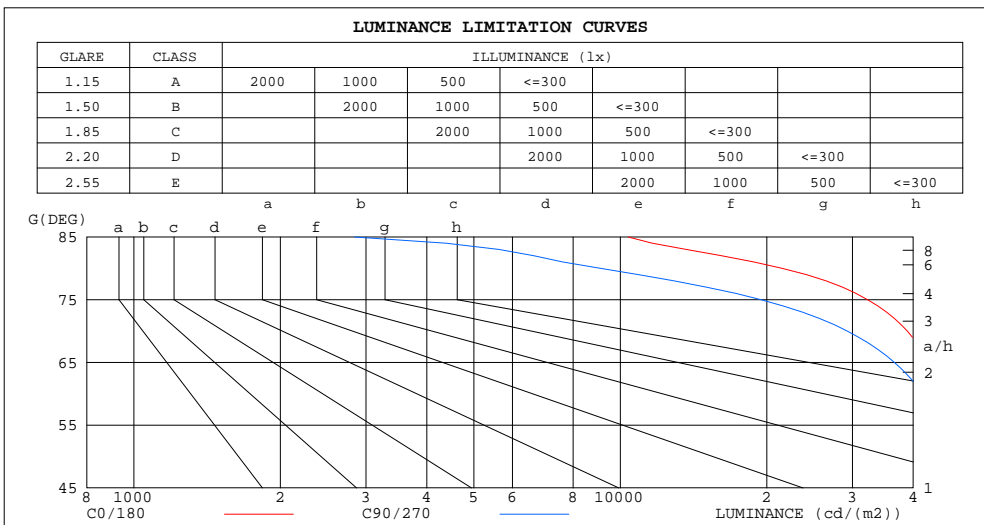
%lum = 83.1%
 %lamp = 83.1%

C Range: 0 - 360DEG
 C Interval: 45.0DEG
 Test Speed: HIGH
 Temperature:25.3DEG
 Operators:
 Test Date:2022-09-23

γ Range: 0 - 180DEG
 γ Interval: 1.0DEG
 Test System:EVERFINE GO-2000A_V1 SYSTEM V2.00.446
 Humidity:65.0%
 Test Distance:10.450m [K=1.0000]
 Remarks:

LUMINANCE LIMITATION CURVES

Test:U:240.10V I:0.0390A P:8.7900W PF:0.9230 Freq:49.99Hz Lamp Flux:776.574x1 lm		
NAME: ID-R-8W-CC 5700K	TYPE: 8W	WEIGHT:
SPEC.: 5700K	DIM.:	SERIAL No.:
MFR.:	SUR.: 0.005	Shielding Angle:



LUMINANCE cd/(m2)		
G(DEG)	C0/180	C90/270
85	10377	2841
80	21522	9109
75	32222	19469
70	38923	29288
65	43418	36606
60	46856	41901
55	49555	45947
50	51811	49143
45	53774	51817

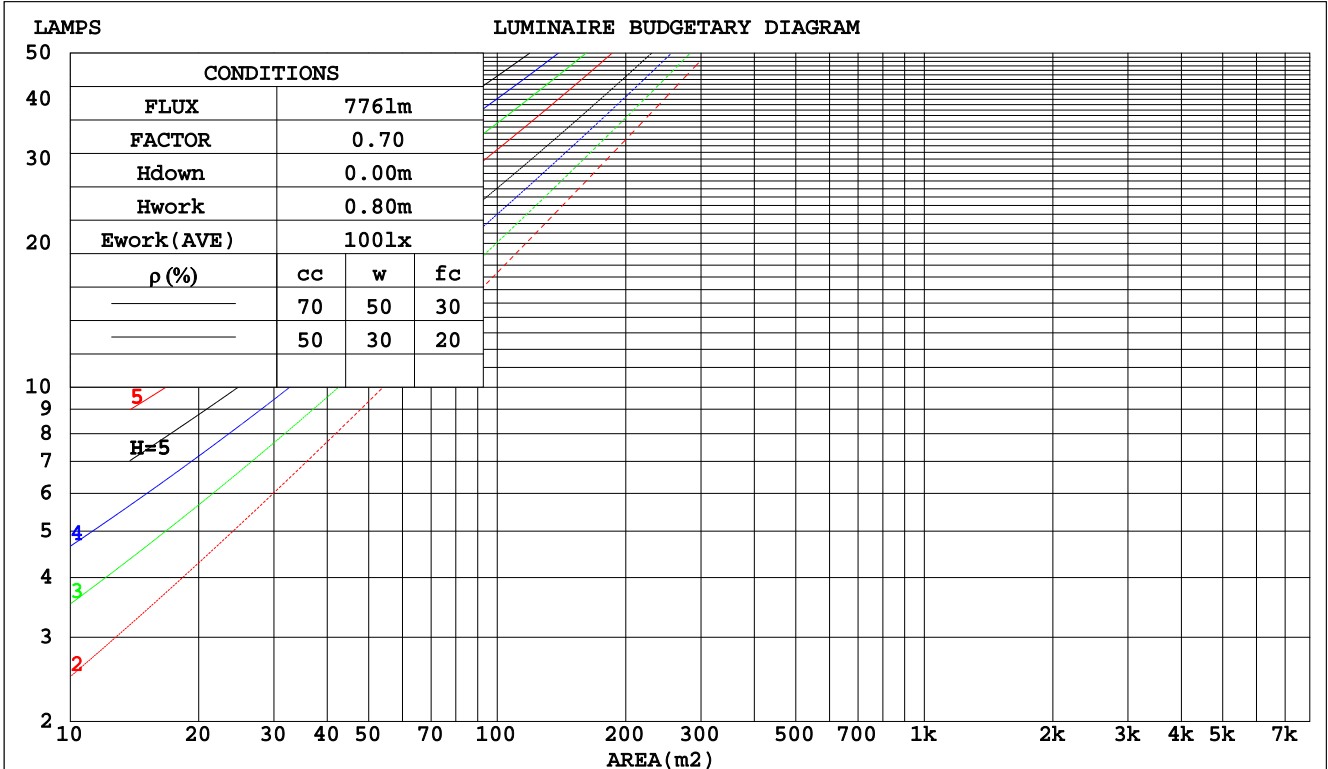
C Range: 0 - 360DEG
 C Interval: 45.0DEG
 Test Speed: HIGH
 Temperature: 25.3DEG
 Operators:
 Test Date: 2022-09-23

γ Range: 0 - 180DEG
 γ Interval: 1.0DEG
 Test System: EVERFINE GO-2000A_V1 SYSTEM V2.00.446
 Humidity: 65.0%
 Test Distance: 10.450m [K=1.0000]
 Remarks:

CU AND LUMINAIRE BUDGETARY ESTIMATE DIAGRAM

Test:U:240.10V I:0.0390A P:8.7900W PF:0.9230 Freq:49.99Hz Lamp Flux:776.574x1 lm		
NAME: ID-R-8W-CC 5700K	TYPE: 8W	WEIGHT:
SPEC.: 5700K	DIM.:	SERIAL No.:
MFR.:	SUR.: 0.005	Shielding Angle:

pcc	80%			70%			50%			30%			10%			0
	50%	30%	10%	50%	30%	10%	50%	30%	10%	50%	30%	10%	50%	30%	10%	0
pw																0
pfc	20%			20%			20%			20%			20%			0
RCR	RCR:Room Cavity Ratio Coefficients of Utilization(CU)															
0.0	1.19	1.19	1.19	1.16	1.16	1.16	1.10	1.10	1.10	1.05	1.05	1.05	1.01	1.01	1.01	.99
1.0	1.05	1.01	.98	1.03	.99	.96	.98	.96	.93	.94	.92	.90	.91	.89	.87	.85
2.0	.93	.86	.81	.91	.85	.80	.87	.82	.78	.84	.80	.76	.80	.77	.74	.72
3.0	.82	.74	.68	.80	.73	.67	.77	.71	.66	.74	.69	.65	.72	.67	.64	.61
4.0	.73	.65	.58	.71	.64	.58	.69	.62	.57	.66	.61	.56	.64	.59	.55	.53
5.0	.65	.57	.50	.64	.56	.50	.62	.55	.49	.60	.54	.49	.58	.52	.48	.46
6.0	.59	.50	.44	.58	.50	.44	.56	.49	.43	.54	.48	.43	.53	.47	.43	.41
7.0	.54	.45	.39	.53	.45	.39	.51	.44	.39	.50	.43	.38	.48	.42	.38	.36
8.0	.49	.41	.35	.48	.40	.35	.47	.40	.35	.46	.39	.34	.44	.38	.34	.32
9.0	.45	.37	.32	.44	.37	.32	.43	.36	.31	.42	.36	.31	.41	.35	.31	.29
10.0	.42	.34	.29	.41	.34	.29	.40	.33	.28	.39	.33	.28	.38	.32	.28	.26



C Range: 0 - 360DEG
 C Interval: 45.0DEG
 Test Speed: HIGH
 Temperature: 25.3DEG
 Operators:
 Test Date: 2022-09-23

γ Range: 0 - 180DEG
 γ Interval: 1.0DEG
 Test System: EVERFINE GO-2000A_V1 SYSTEM V2.00.446
 Humidity: 65.0%
 Test Distance: 10.450m [K=1.0000]
 Remarks:

WEC AND CCEC

Test:U:240.10V I:0.0390A P:8.7900W PF:0.9230 Freq:49.99Hz Lamp Flux:776.574x1 lm		
NAME: ID-R-8W-CC 5700K	TYPE: 8W	WEIGHT:
SPEC.: 5700K	DIM.:	SERIAL No.:
MFR.:	SUR.: 0.005	Shielding Angle:

ρcc	80%			70%			50%			30%			10%			0
ρw	50%	30%	10%	50%	30%	10%	50%	30%	10%	50%	30%	10%	50%	30%	10%	0
ρfc	20%			20%			20%			20%			20%			0
RCR	RCR:Room Cavity Ratio						Wall Exitance Coefficients(WEC)									
0.0																
1.0	.277	.158	.050	.270	.154	.049	.256	.147	.047	.243	.140	.045	.232	.134	.043	
2.0	.268	.147	.045	.262	.144	.044	.249	.139	.043	.238	.134	.042	.228	.129	.041	
3.0	.252	.134	.040	.246	.132	.040	.236	.128	.039	.226	.124	.038	.216	.120	.037	
4.0	.235	.122	.036	.230	.120	.036	.221	.117	.035	.212	.114	.034	.203	.111	.034	
5.0	.219	.112	.032	.215	.110	.032	.206	.107	.032	.198	.105	.031	.191	.102	.031	
6.0	.205	.103	.029	.201	.101	.029	.193	.099	.029	.186	.097	.028	.179	.094	.028	
7.0	.191	.095	.027	.188	.094	.027	.181	.091	.026	.175	.089	.026	.169	.088	.026	
8.0	.179	.088	.025	.176	.087	.025	.170	.085	.024	.164	.083	.024	.159	.082	.024	
9.0	.169	.082	.023	.166	.081	.023	.160	.079	.022	.155	.078	.022	.150	.076	.022	
10.0	.159	.076	.021	.156	.076	.021	.151	.074	.021	.147	.073	.021	.142	.072	.021	

ρcc	80%			70%			50%			30%			10%			0
ρw	50%	30%	10%	50%	30%	10%	50%	30%	10%	50%	30%	10%	50%	30%	10%	0
ρfc	20%			20%			20%			20%			20%			0
RCR	RCR:Room Cavity Ratio						Ceiling Cavity Exitance Coefficients(CCEC)									
0.0	.200	.200	.200	.171	.171	.171	.117	.117	.117	.067	.067	.067	.021	.021	.021	
1.0	.188	.166	.146	.160	.142	.126	.110	.098	.087	.063	.057	.051	.020	.018	.016	
2.0	.179	.142	.110	.153	.122	.095	.105	.084	.067	.060	.049	.039	.019	.016	.013	
3.0	.171	.124	.086	.146	.107	.075	.100	.074	.053	.058	.043	.031	.019	.014	.010	
4.0	.163	.110	.070	.140	.095	.061	.096	.066	.043	.056	.039	.025	.018	.013	.008	
5.0	.156	.100	.058	.134	.086	.051	.092	.060	.036	.053	.035	.021	.017	.012	.007	
6.0	.149	.091	.050	.128	.079	.044	.088	.055	.031	.051	.033	.018	.017	.011	.006	
7.0	.142	.084	.044	.122	.073	.038	.085	.051	.027	.049	.030	.016	.016	.010	.005	
8.0	.136	.079	.039	.117	.068	.034	.081	.048	.024	.047	.028	.014	.015	.009	.005	
9.0	.130	.074	.036	.112	.064	.031	.078	.045	.022	.045	.027	.013	.015	.009	.004	
10.0	.125	.069	.033	.108	.060	.029	.075	.042	.020	.044	.025	.012	.014	.008	.004	

C Range: 0 - 360DEG
 C Interval: 45.0DEG
 Test Speed: HIGH
 Temperature:25.3DEG
 Operators:
 Test Date:2022-09-23

γ Range: 0 - 180DEG
 γ Interval: 1.0DEG
 Test System:EVERFINE GO-2000A_V1 SYSTEM V2.00.446
 Humidity:65.0%
 Test Distance:10.450m [K=1.0000]
 Remarks:

UGR(Unified Glare Rating) Table

Test:U:240.10V I:0.0390A P:8.7900W PF:0.9230 Freq:49.99Hz										
Lamp Flux:776.574x1 lm										
NAME: ID-R-8W-CC 5700K					TYPE: 8W			WEIGHT:		
SPEC.: 5700K					DIM.:			SERIAL No.:		
MFR.:					SUR.: 0.005			Shielding Angle:		
ceiling/cavity	0.7	0.7	0.5	0.5	0.3	0.7	0.7	0.5	0.5	0.3
walls	0.5	0.3	0.5	0.3	0.3	0.5	0.3	0.5	0.3	0.3
working plane	0.2	0.2	0.2	0.2	0.2	0.2	0.2	0.2	0.2	0.2
Room dimensions	Viewed crosswise					Viewed endwise				
x = 2H y = 2H	26.4	27.8	26.6	28.0	28.2	26.0	27.5	26.3	27.7	27.9
3H	27.6	28.9	27.9	29.2	29.4	27.0	28.3	27.3	28.6	28.8
4H	28.0	29.3	28.3	29.5	29.8	27.2	28.4	27.5	28.7	29.0
6H	28.2	29.3	28.5	29.6	29.9	27.2	28.3	27.5	28.6	28.9
8H	28.2	29.3	28.5	29.6	29.9	27.1	28.3	27.5	28.6	28.9
12H	28.1	29.2	28.5	29.5	29.9	27.1	28.2	27.5	28.5	28.8
4H 2H	26.8	28.1	27.2	28.3	28.6	26.6	27.8	26.9	28.1	28.3
3H	28.2	29.3	28.6	29.6	29.9	27.7	28.8	28.0	29.1	29.4
4H	28.7	29.7	29.1	30.0	30.4	27.9	28.9	28.3	29.3	29.6
6H	28.9	29.8	29.3	30.2	30.6	28.0	28.8	28.4	29.2	29.6
8H	28.9	29.7	29.4	30.1	30.5	27.9	28.7	28.4	29.1	29.5
12H	28.9	29.7	29.4	30.1	30.5	27.9	28.6	28.3	29.0	29.5
8H 4H	28.8	29.6	29.2	29.9	30.4	28.0	28.9	28.5	29.2	29.6
6H	29.0	29.7	29.5	30.1	30.6	28.1	28.8	28.6	29.2	29.7
8H	29.1	29.7	29.6	30.1	30.6	28.1	28.7	28.6	29.1	29.6
12H	29.1	29.6	29.6	30.0	30.5	28.1	28.6	28.6	29.0	29.6
12H 4H	28.7	29.5	29.2	29.9	30.3	28.0	28.8	28.5	29.2	29.6
6H	29.0	29.6	29.5	30.0	30.5	28.1	28.7	28.6	29.1	29.6
8H	29.1	29.6	29.5	30.0	30.5	28.1	28.6	28.6	29.1	29.6
Variations with the observer position at spacings(CIE Pub.117):										
S = 1.0H	+ 0.2 / - 0.3					+ 0.3 / - 0.4				
1.5H	+ 0.2 / - 0.3					+ 0.2 / - 0.5				
2.0H	+ 0.4 / - 0.4					+ 0.4 / - 0.5				

CIE Pub.117, 776.6 lm Total Lamp Luminous Flux Corrected (8log(F/F0) = -0.9)
 Area: 0.005 m2

C Range: 0 - 360DEG
 C Interval: 45.0DEG
 Test Speed: HIGH
 Temperature:25.3DEG
 Operators:
 Test Date:2022-09-23

γ Range: 0 - 180DEG
 γ Interval: 1.0DEG
 Test System:EVERFINE GO-2000A_V1 SYSTEM V2.00.446
 Humidity:65.0%
 Test Distance:10.450m [K=1.0000]
 Remarks:

UTILIZATION FACTORS TABLE

Test:U:240.10V I:0.0390A P:8.7900W PF:0.9230 Freq:49.99Hz Lamp Flux:776.574x1 lm		
NAME: ID-R-8W-CC 5700K	TYPE: 8W	WEIGHT:
SPEC.: 5700K	DIM.:	SERIAL No.:
MFR.:	SUR.: 0.005	Shielding Angle:

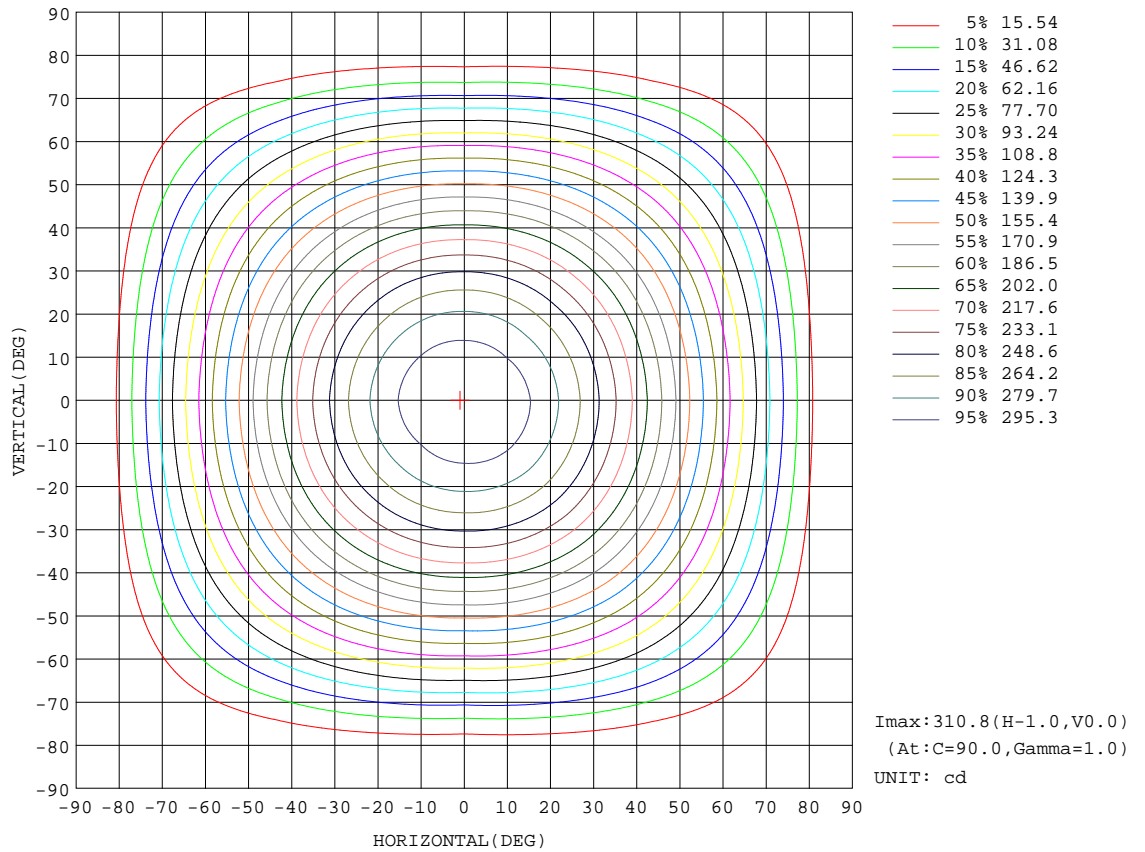
REFLECTANCE										
Ceiling	0.8	0.8	0.8	0.7	0.7	0.7	0.5	0.5	0.5	0
Walls	0.7	0.5	0.3	0.7	0.5	0.3	0.7	0.5	0.3	0
Working plane	0.2	0.2	0.2	0.2	0.2	0.2	0.2	0.2	0.2	0
ROOM INDEX	UTILIZATION FACTORS(PERCENT) $k(RI) \times RCR = 5$									
k = 0.60	60	49	42	59	48	42	58	48	42	35
0.80	70	59	52	69	59	52	67	58	51	45
1.00	78	68	61	77	67	61	75	69	60	53
1.25	85	76	69	84	75	69	81	73	68	61
1.50	90	81	75	89	80	74	86	78	73	66
2.00	97	89	83	95	88	82	92	85	81	73
2.50	101	93	88	98	92	87	95	89	85	77
3.00	104	97	92	101	96	91	97	93	89	81
4.00	107	102	98	105	100	97	101	97	94	85
5.00	110	105	102	107	103	100	102	99	97	87
ROOM INDEX	UF(total)									Direct
According to DIN EN 13032-2 2004			Suspended				SHRNOM = 1.25			

C Range: 0 - 360DEG
 C Interval: 45.0DEG
 Test Speed: HIGH
 Temperature:25.3DEG
 Operators:
 Test Date:2022-09-23

γ Range: 0 - 180DEG
 γ Interval: 1.0DEG
 Test System:EVERFINE GO-2000A_V1 SYSTEM V2.00.446
 Humidity:65.0%
 Test Distance:10.450m [K=1.0000]
 Remarks:

ISOCANDELA DIAGRAM

Test:U:240.10V I:0.0390A P:8.7900W PF:0.9230 Freq:49.99Hz Lamp Flux:776.574x1 lm		
NAME: ID-R-8W-CC 5700K	TYPE: 8W	WEIGHT:
SPEC.: 5700K	DIM.:	SERIAL No.:
MFR.:	SUR.: 0.005	Shielding Angle:



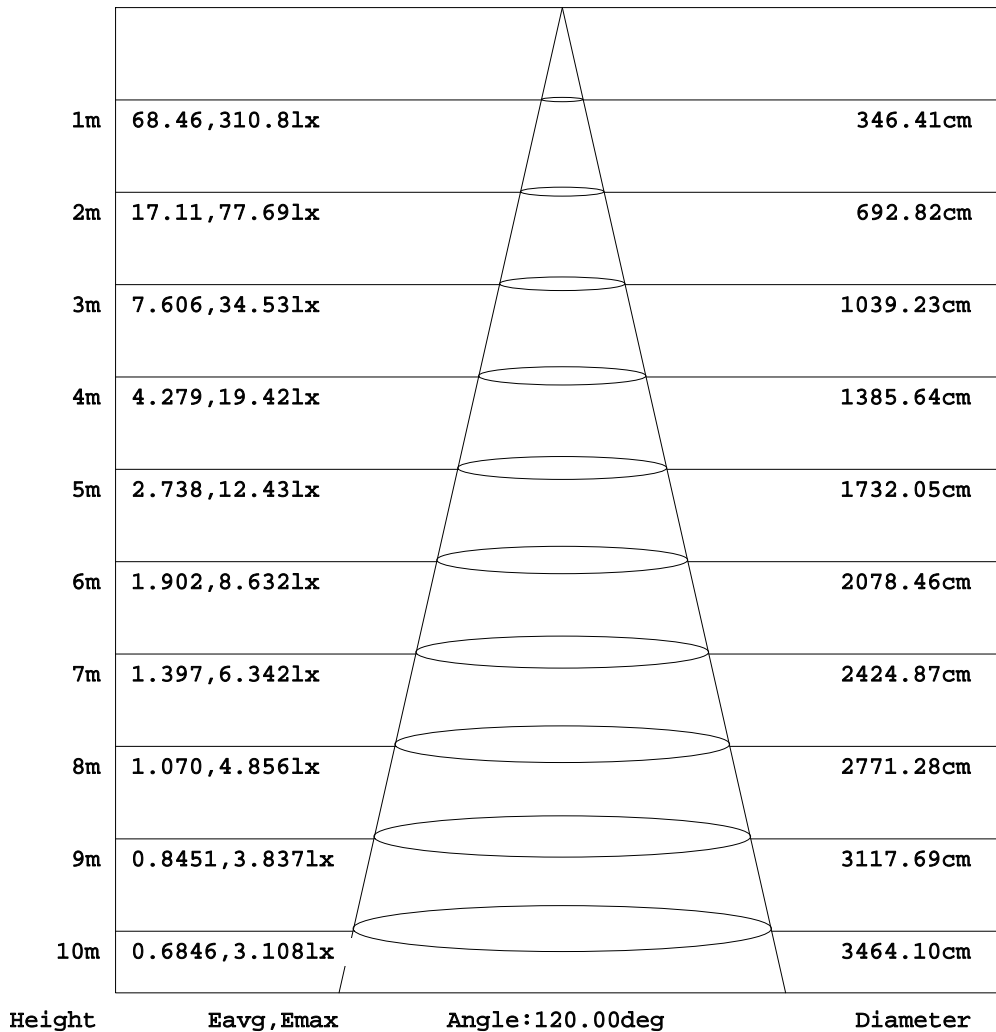
C Range: 0 - 360DEG
C Interval: 45.0DEG
Test Speed: HIGH
Temperature: 25.3DEG
Operators:
Test Date: 2022-09-23

γ Range: 0 - 180DEG
γ Interval: 1.0DEG
Test System: EVERFINE GO-2000A_V1 SYSTEM V2.00.446
Humidity: 65.0%
Test Distance: 10.450m [K=1.0000]
Remarks:

AAI Figure

Test:U:240.10V I:0.0390A P:8.7900W PF:0.9230 Freq:49.99Hz Lamp Flux:776.574x1 lm		
NAME: ID-R-8W-CC 5700K	TYPE: 8W	WEIGHT:
SPEC.: 5700K	DIM.:	SERIAL No.:
MFR.:	SUR.: 0.005	Shielding Angle:

Flux out:645.2 lm



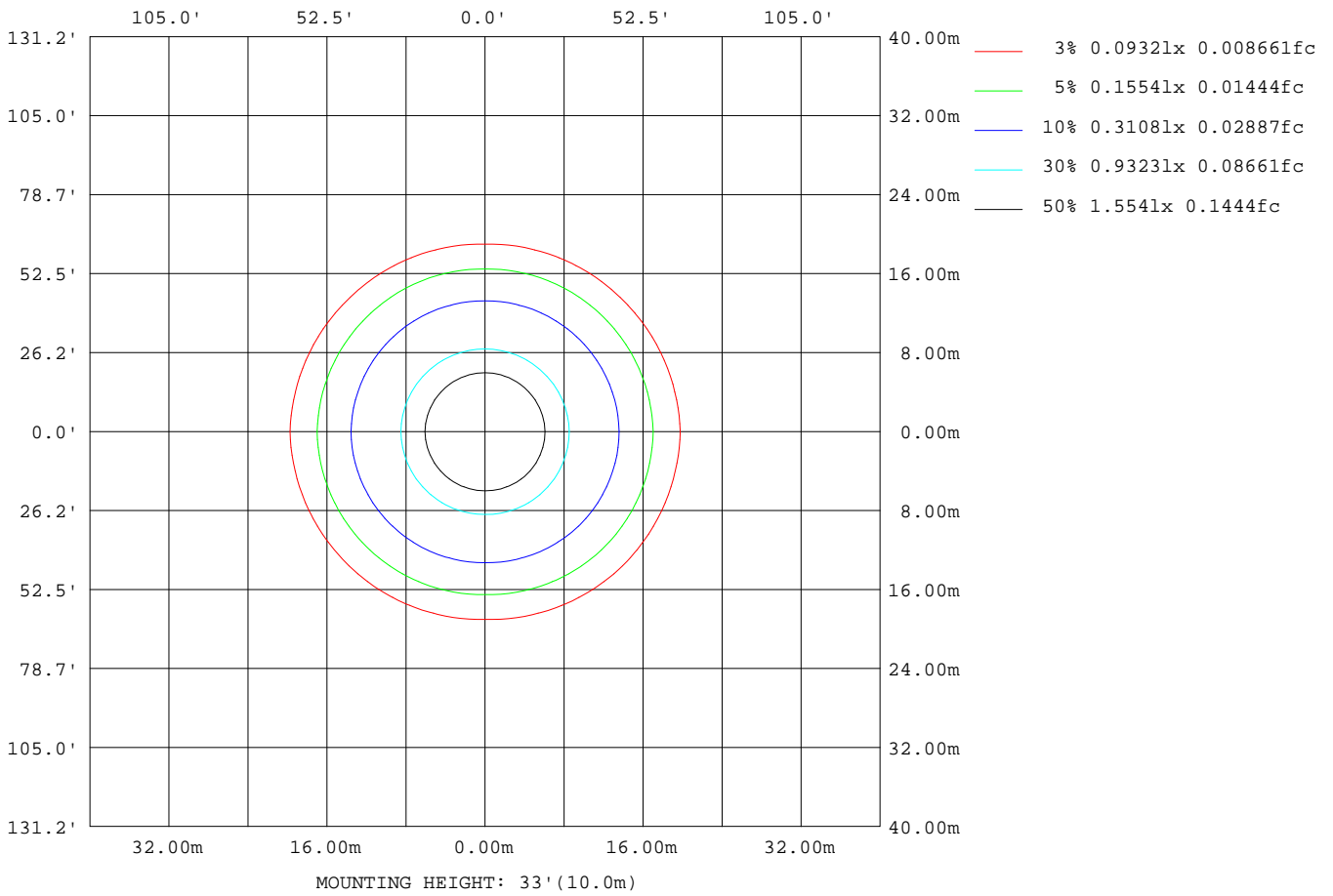
Note:The Curves indicate the illuminated area and the average illumination when the luminaire is at different distance.

C Range: 0 - 360DEG
C Interval: 45.0DEG
Test Speed: HIGH
Temperature:25.3DEG
Operators:
Test Date:2022-09-23

γ Range: 0 - 180DEG
γ Interval: 1.0DEG
Test System:EVERFINE GO-2000A_V1 SYSTEM V2.00.446
Humidity:65.0%
Test Distance:10.450m [K=1.0000]
Remarks:

ISOLUX DIAGRAM

Test:U:240.10V I:0.0390A P:8.7900W PF:0.9230 Freq:49.99Hz Lamp Flux:776.574x1 lm		
NAME: ID-R-8W-CC 5700K	TYPE: 8W	WEIGHT:
SPEC.: 5700K	DIM.:	SERIAL No.:
MFR.:	SUR.: 0.005	Shielding Angle:



C Range: 0 - 360DEG
 C Interval: 45.0DEG
 Test Speed: HIGH
 Temperature:25.3DEG
 Operators:
 Test Date:2022-09-23

γ Range: 0 - 180DEG
 γ Interval: 1.0DEG
 Test System:EVERFINE GO-2000A_V1 SYSTEM V2.00.446
 Humidity:65.0%
 Test Distance:10.450m [K=1.0000]
 Remarks:

LED Avg.L Report

Test:U:240.10V I:0.0390A P:8.7900W PF:0.9230 Freq:49.99Hz Lamp Flux:776.574x1 lm		
NAME: ID-R-8W-CC 5700K	TYPE: 8W	WEIGHT:
SPEC.: 5700K	DIM.:	SERIAL No.:
MFR.:	SUR.: 0.005	Shielding Angle:

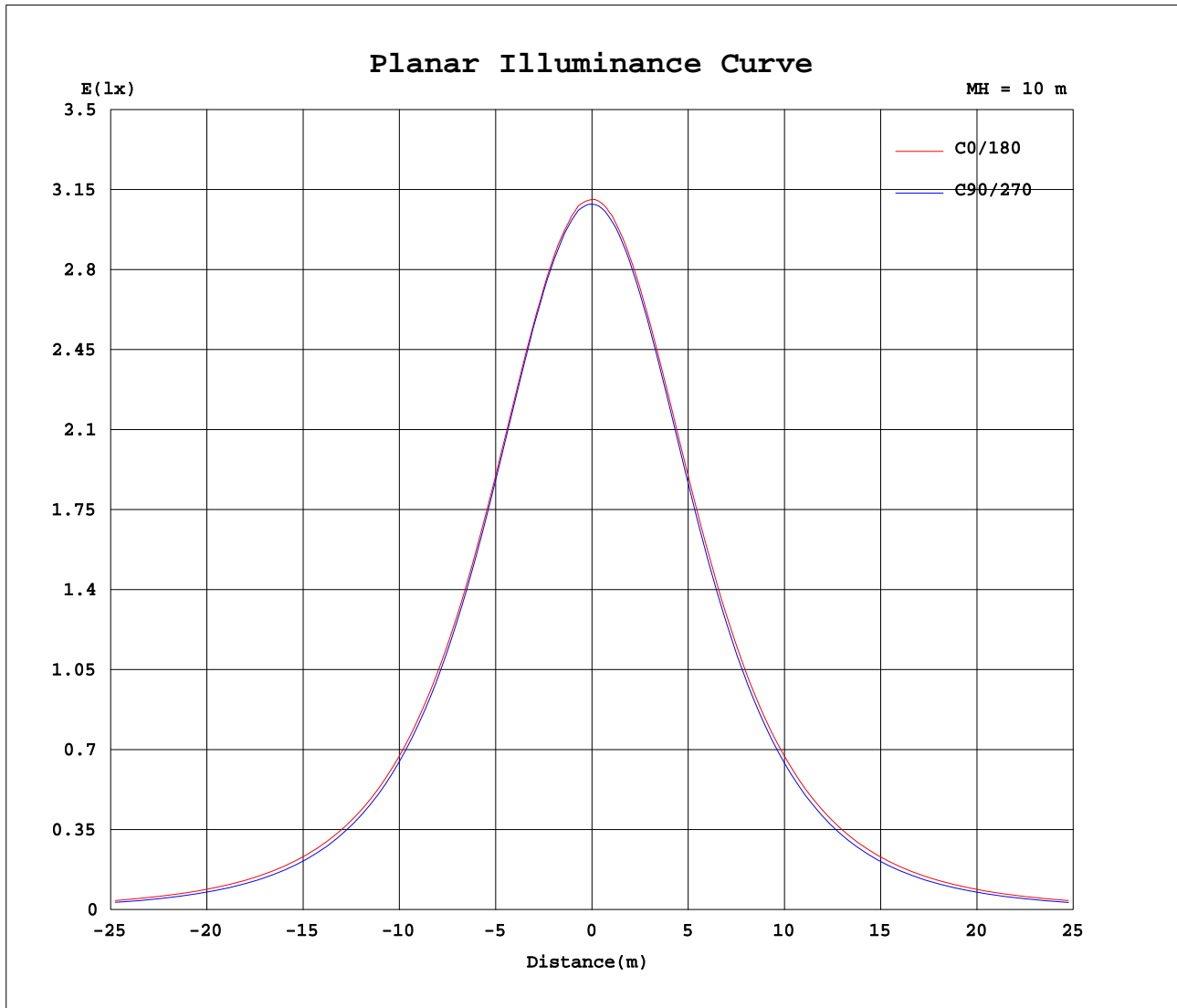
AvgL	cd/m2
L_0~180(65)av	43092
L_0~180(75)av	31833
L_0~180(85)av	10076
L_90~270(65)av	36564
L_90~270(75)av	19376
L_90~270(85)av	2839
L_45(65)av	39662
L_45(75)av	24254
L_45(85)av	4704

Standard: GB/T 29293-2012

C Range: 0 - 360DEG
 C Interval: 45.0DEG
 Test Speed: HIGH
 Temperature:25.3DEG
 Operators:
 Test Date:2022-09-23

γ Range: 0 - 180DEG
 γ Interval: 1.0DEG
 Test System:EVERFINE GO-2000A_V1 SYSTEM V2.00.446
 Humidity:65.0%
 Test Distance:10.450m [K=1.0000]
 Remarks:

Planar Illuminance Curve



C Range: 0 - 360DEG
 C Interval: 45.0DEG
 Test Speed: HIGH
 Temperature: 25.3DEG
 Operators:
 Test Date: 2022-09-23

γ Range: 0 - 180DEG
 γ Interval: 1.0DEG
 Test System: EVERFINE GO-2000A_V1 SYSTEM V2.00.446
 Humidity: 65.0%
 Test Distance: 10.450m [K=1.0000]
 Remarks:

LUMINOUS DISTRIBUTION INTENSITY DATA

Test:U:240.10V I:0.0390A P:8.7900W PF:0.9230 Freq:49.99Hz Lamp Flux:776.574x1 lm		
NAME: ID-R-8W-CC 5700K	TYPE: 8W	WEIGHT:
SPEC.: 5700K	DIM.:	SERIAL No.:
MFR.:	SUR.: 0.005	Shielding Angle:

Table--1

UNIT: cd

C(DEG) γ (DEG)	0	45	90	135	180	225	270	315											
0	309	309	309	309	309	309	309	309											
5	308	308	308	308	308	307	307	308											
10	303	303	303	303	303	302	302	302											
15	295	296	295	295	295	293	294	294											
20	284	285	284	284	283	282	282	282											
25	269	270	269	269	269	267	267	268											
30	252	253	251	252	252	249	248	250											
35	233	233	230	232	233	229	228	230											
40	212	211	208	210	211	207	206	208											
45	189	188	184	187	189	184	182	185											
50	166	164	158	162	165	160	157	161											
55	141	138	132	137	141	135	131	135											
60	117	112	105	111	116	109	104	109											
65	91.3	85.7	77.6	84.1	90.8	82.2	77.0	83.2											
70	66.3	58.9	50.2	57.1	65.6	55.8	50.0	56.9											
75	41.5	32.8	25.3	31.2	40.9	30.3	24.9	31.2											
80	18.6	11.6	7.93	10.7	18.1	10.1	7.85	10.6											
85	4.50	2.33	1.24	2.02	4.28	1.82	1.23	2.03											
90	0.32	0.26	0.22	0.25	0.26	0.22	0.19	0.25											
95	0.39	0.38	0.44	0.40	0.39	0.31	0.31	0.32											
100	0.60	0.60	0.48	0.60	0.55	0.46	0.47	0.45											
105	0.82	0.78	0.70	0.79	0.74	0.65	0.63	0.69											
110	1.06	1.03	0.95	1.04	0.95	0.88	0.84	0.85											
115	1.37	1.29	1.22	1.29	1.23	1.11	1.09	1.08											
120	1.63	1.54	1.48	1.52	1.45	1.33	1.33	1.29											
125	1.86	1.78	1.73	1.75	1.64	1.56	1.55	1.54											
130	2.09	2.00	2.01	1.99	1.86	1.76	1.77	1.76											
135	2.30	2.25	2.08	2.22	2.08	1.99	2.01	1.98											
140	2.49	2.48	2.32	2.44	2.31	2.20	2.25	2.15											
145	2.54	2.65	2.53	2.62	2.47	2.33	2.45	2.34											
150	2.87	2.83	2.90	2.79	2.60	2.54	2.61	2.55											
155	3.00	3.00	3.10	2.96	2.74	2.65	2.78	2.68											
160	3.13	3.12	3.23	3.10	2.88	2.79	2.87	2.82											
165	3.25	3.23	3.37	3.18	3.00	2.95	2.99	2.98											
170	3.25	3.31	3.25	3.27	3.13	3.12	3.13	3.10											
175	3.29	3.39	3.28	3.36	3.25	3.23	3.22	3.19											
180	3.38	3.44	3.37	3.41	3.37	3.45	3.37	3.40											

C Range: 0 - 360DEG
 C Interval: 45.0DEG
 Test Speed: HIGH
 Temperature:25.3DEG
 Operators:
 Test Date:2022-09-23

γ Range: 0 - 180DEG
 γ Interval: 1.0DEG
 Test System:EVERFINE GO-2000A_V1 SYSTEM V2.00.446
 Humidity:65.0%
 Test Distance:10.450m [K=1.0000]
 Remarks: