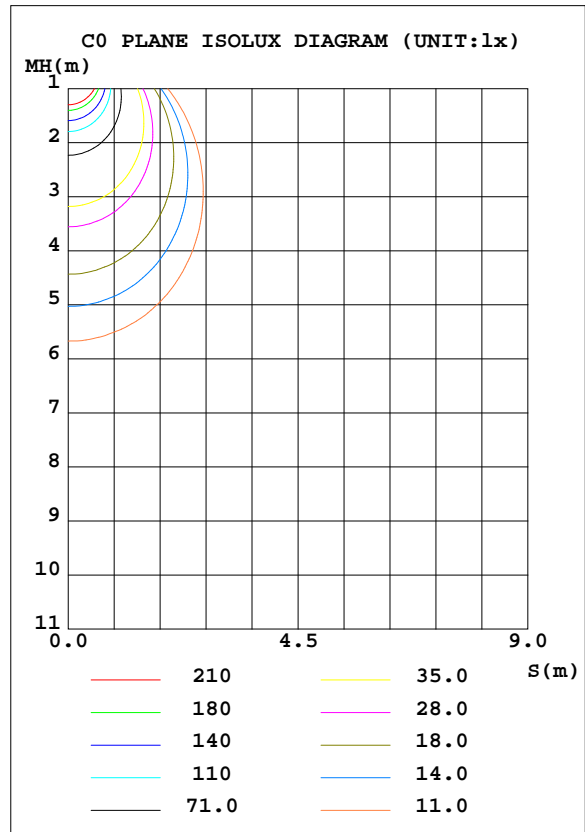
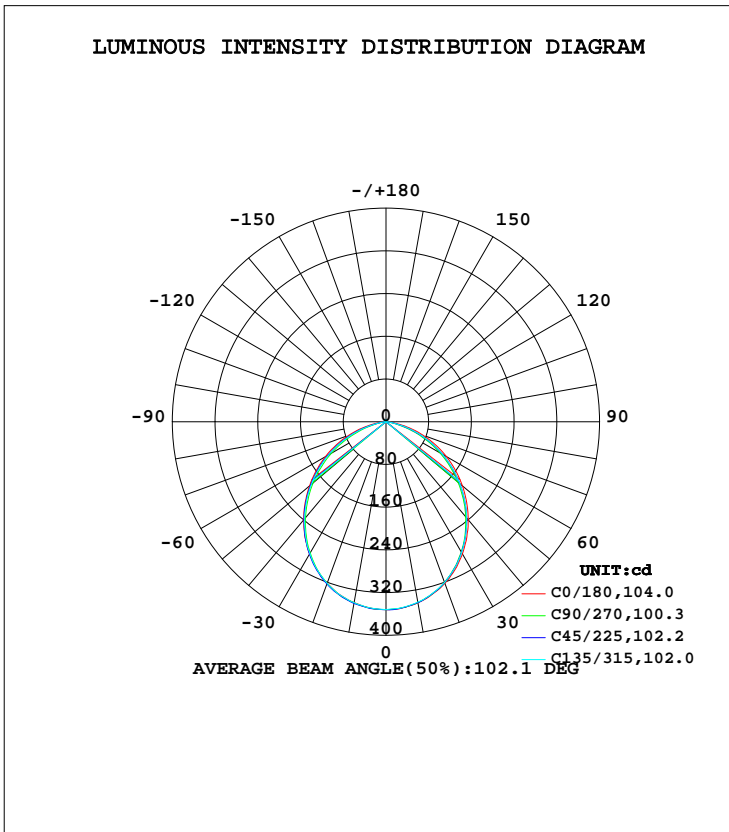


LUMINAIRE PHOTOMETRIC TEST REPORT

Test:U:240.20V I:0.0380A P:8.3700W PF:0.9160 Freq:49.99Hz Lamp Flux:878.676x1 lm		
NAME: ID-R-8W-CC 4000K	TYPE: 8W	WEIGHT:
SPEC.: 4000K	DIM.:	SERIAL No.:
MFR.:	SUR.: 0.005	Shielding Angle:

DATA OF LAMP		PHOTOMETRIC DATA Eff: 104.98 lm/W			
MODEL	ID-R-8W-CC 4000K	I _{max} (cd)	352.2	S/MH(C0/180)	1.21
NOMINAL POWER(W)	8	LOR(%)	100.0	S/MH(C90/270)	1.20
RATED VOLTAGE(V)	240	TOTAL FLUX(lm)	878.68	η UP, DN(C0-180)	0.7,49.6
NOMINAL FLUX(lm)	878.676	CIE CLASS	DIRECT	η UP, DN(C180-360)	0.6,49.1
LAMPS INSIDE	1	η up(%)	1.2	CIBSE SHR NOM	1.25
TEST VOLTAGE(V)	240	η down(%)	98.8	CIBSE SHR MAX	1.35



C Range: 0 - 360DEG
 C Interval: 45.0DEG
 Test Speed: HIGH
 Temperature:25.3DEG
 Operators:
 Test Date:2022-09-23

γ Range: 0 - 180DEG
 γ Interval: 1.0DEG
 Test System:EVERFINE GO-2000A_V1 SYSTEM V2.00.446
 Humidity:65.0%
 Test Distance:10.450m [K=1.0000]
 Remarks:

ZONAL FLUX DIAGRAM

ZONAL FLUX DIAGRAM:

γ	C0	C45	C90	C135	C180	C225	C270	C315	γ	Φ zone	Φ total	%lum, lamp
10	343.9	345.4	344.5	344.0	344.3	343.8	343.8	343.0	0- 10	33.21	33.21	3.78,3.78
20	322.1	323.3	322.4	322.1	322.3	320.6	320.1	320.5	10- 20	94.39	127.6	14.5,14.5
30	286.2	286.4	284.0	285.2	286.2	282.8	281.7	283.1	20- 30	140.2	267.8	30.5,30.5
40	239.6	239.1	234.6	237.2	239.6	235.2	232.4	235.2	30- 40	163.5	431.3	49.1,49.1
50	187.0	184.3	178.0	182.5	187.1	180.4	175.9	180.6	40- 50	161.8	593.1	67.5,67.5
60	131.0	126.1	117.9	124.1	130.8	122.2	116.7	122.7	50- 60	136.9	730.1	83.1,83.1
70	74.20	66.42	56.96	64.43	73.72	63.11	56.79	63.89	60- 70	93.33	823.4	93.7,93.7
80	21.43	13.65	9.281	12.66	20.99	11.94	9.247	12.51	70- 80	39.73	863.1	98.2,98.2
90	0.3600	0.3002	0.2574	0.2872	0.2989	0.2568	0.2284	0.2724	80- 90	4.640	867.7	98.8,98.8
100	0.6774	0.6886	0.5730	0.6708	0.6273	0.5632	0.5077	0.5289	90-100	0.4768	868.2	98.8,98.8
110	1.222	1.172	1.102	1.193	1.071	0.9930	0.9629	1.014	100-110	0.8801	869.1	98.9,98.9
120	1.812	1.771	1.698	1.738	1.632	1.514	1.507	1.493	110-120	1.350	870.5	99.1,99.1
130	2.424	2.277	2.320	2.259	2.098	2.033	2.007	2.051	120-130	1.711	872.2	99.3,99.3
140	2.855	2.810	2.623	2.768	2.608	2.458	2.545	2.472	130-140	1.861	874.0	99.5,99.5
150	3.254	3.220	3.336	3.172	2.951	2.889	2.962	2.899	140-150	1.786	875.8	99.7,99.7
160	3.576	3.578	3.703	3.540	3.241	3.212	3.278	3.230	150-160	1.508	877.3	99.8,99.8
170	3.685	3.791	3.689	3.731	3.562	3.548	3.565	3.517	160-170	0.9979	878.3	100,100
180	3.846	3.937	3.844	3.915	3.853	3.922	3.851	3.907	170-180	0.3554	878.7	100,100
DEG	LUMINOUS INTENSITY:cd									UNIT:lm		

Conical surface Flux(90deg): 513.98 lm

%lum = 58.5%
%lamp = 58.5%

Conical surface Flux(120deg): 730.05 lm

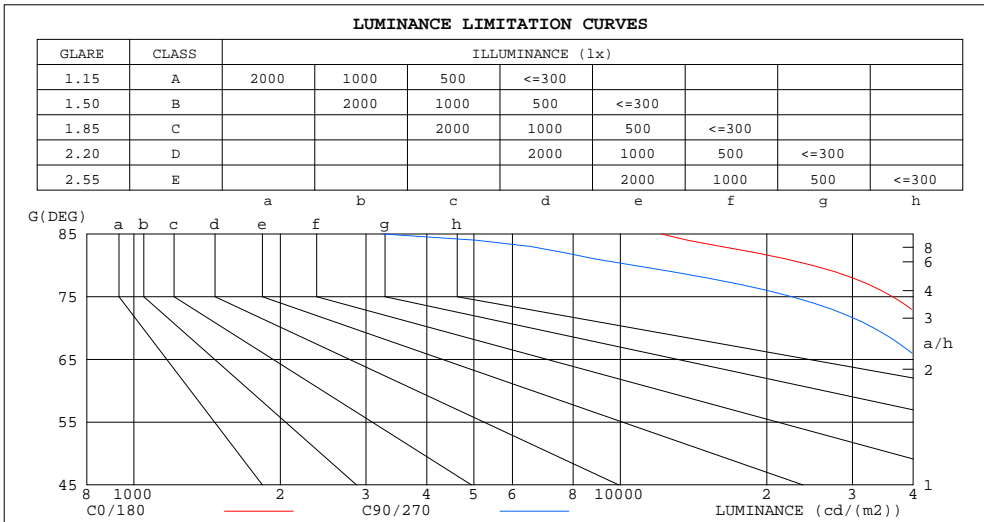
%lum = 83.1%
%lamp = 83.1%

C Range: 0 - 360DEG
C Interval: 45.0DEG
Test Speed: HIGH
Temperature:25.3DEG
Operators:
Test Date:2022-09-23

γ Range: 0 - 180DEG
γ Interval: 1.0DEG
Test System:EVERFINE GO-2000A_V1 SYSTEM V2.00.446
Humidity:65.0%
Test Distance:10.450m [K=1.0000]
Remarks:

LUMINANCE LIMITATION CURVES

Test:U:240.20V I:0.0380A P:8.3700W PF:0.9160 Freq:49.99Hz Lamp Flux:878.676x1 lm		
NAME: ID-R-8W-CC 4000K	TYPE: 8W	WEIGHT:
SPEC.: 4000K	DIM.:	SERIAL No.:
MFR.:	SUR.: 0.005	Shielding Angle:



LUMINANCE cd/(m2)		
G (DEG)	C0/180	C90/270
85	12142	3249
80	24832	10657
75	36288	22506
70	43649	33206
65	48845	41141
60	52730	47004
55	55833	51481
50	58516	55223
45	60942	58306

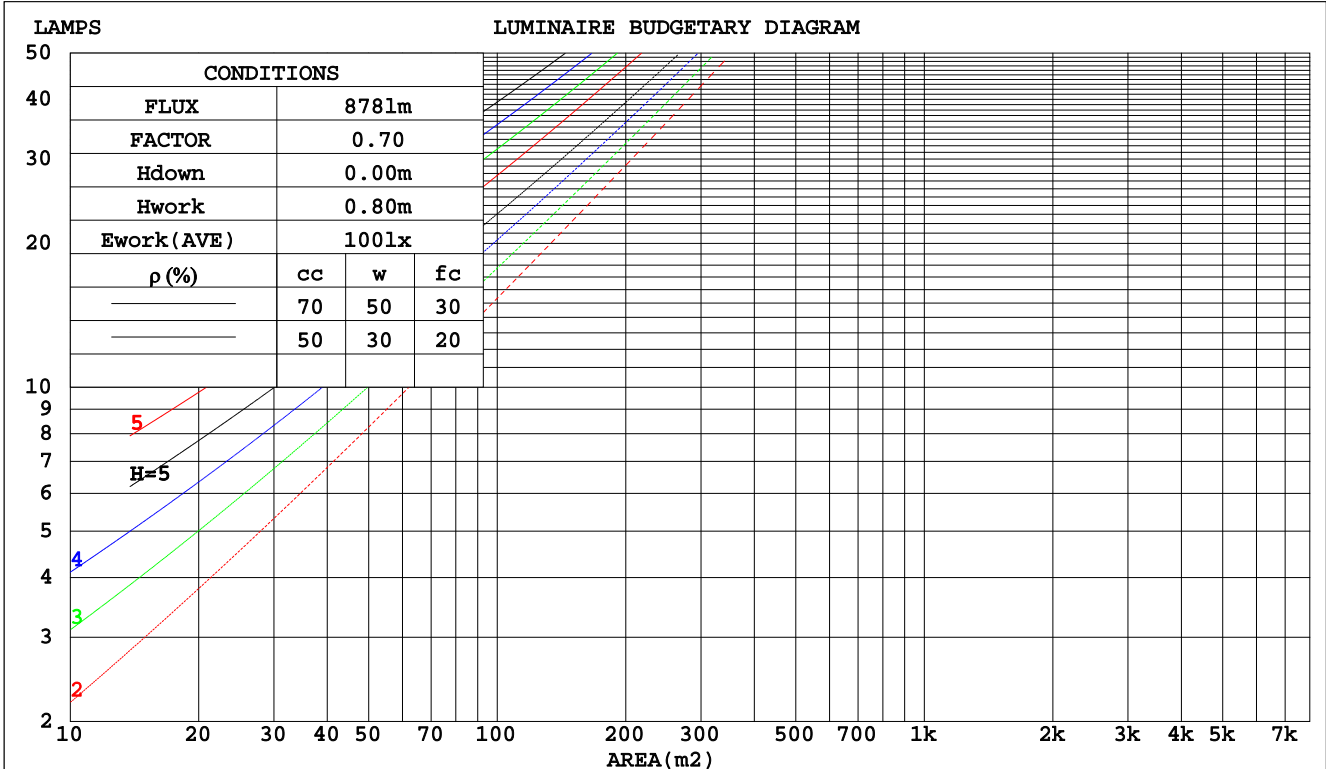
C Range: 0 - 360DEG
 C Interval: 45.0DEG
 Test Speed: HIGH
 Temperature: 25.3DEG
 Operators:
 Test Date: 2022-09-23

γ Range: 0 - 180DEG
 γ Interval: 1.0DEG
 Test System: EVERFINE GO-2000A_V1 SYSTEM V2.00.446
 Humidity: 65.0%
 Test Distance: 10.450m [K=1.0000]
 Remarks:

CU AND LUMINAIRE BUDGETARY ESTIMATE DIAGRAM

Test:U:240.20V I:0.0380A P:8.3700W PF:0.9160 Freq:49.99Hz Lamp Flux:878.676x1 lm		
NAME: ID-R-8W-CC 4000K	TYPE: 8W	WEIGHT:
SPEC.: 4000K	DIM.:	SERIAL No.:
MFR.:	SUR.: 0.005	Shielding Angle:

pcc	80%			70%			50%			30%			10%			0
	50%	30%	10%	50%	30%	10%	50%	30%	10%	50%	30%	10%	50%	30%	10%	0
pw																
pfc	20%			20%			20%			20%			20%			0
RCR	RCR:Room Cavity Ratio															
	Coefficients of Utilization(CU)															
0.0	1.19	1.19	1.19	1.16	1.16	1.16	1.10	1.10	1.10	1.05	1.05	1.05	1.01	1.01	1.01	.99
1.0	1.05	1.01	.98	1.03	.99	.96	.98	.96	.93	.94	.92	.90	.91	.89	.87	.85
2.0	.93	.86	.81	.91	.85	.80	.87	.82	.78	.84	.80	.76	.80	.77	.74	.72
3.0	.82	.74	.68	.80	.73	.67	.77	.71	.66	.74	.69	.65	.72	.67	.64	.61
4.0	.73	.65	.58	.72	.64	.58	.69	.62	.57	.66	.61	.56	.64	.59	.55	.53
5.0	.65	.57	.50	.64	.56	.50	.62	.55	.49	.60	.54	.49	.58	.53	.48	.46
6.0	.59	.50	.44	.58	.50	.44	.56	.49	.44	.54	.48	.43	.53	.47	.43	.41
7.0	.54	.45	.39	.53	.45	.39	.51	.44	.39	.50	.43	.38	.48	.42	.38	.36
8.0	.49	.41	.35	.48	.40	.35	.47	.40	.35	.46	.39	.34	.44	.38	.34	.32
9.0	.45	.37	.32	.44	.37	.32	.43	.36	.31	.42	.36	.31	.41	.35	.31	.29
10.0	.42	.34	.29	.41	.34	.29	.40	.33	.29	.39	.33	.28	.38	.32	.28	.26



C Range: 0 - 360DEG
 C Interval: 45.0DEG
 Test Speed: HIGH
 Temperature: 25.3DEG
 Operators:
 Test Date: 2022-09-23

γ Range: 0 - 180DEG
 γ Interval: 1.0DEG
 Test System: EVERFINE GO-2000A_V1 SYSTEM V2.00.446
 Humidity: 65.0%
 Test Distance: 10.450m [K=1.0000]
 Remarks:

WEC AND CCEC

Test:U:240.20V I:0.0380A P:8.3700W PF:0.9160 Freq:49.99Hz Lamp Flux:878.676x1 lm		
NAME: ID-R-8W-CC 4000K	TYPE: 8W	WEIGHT:
SPEC.: 4000K	DIM.:	SERIAL No.:
MFR.:	SUR.: 0.005	Shielding Angle:

ρcc	80%			70%			50%			30%			10%			0
ρw	50%	30%	10%	50%	30%	10%	50%	30%	10%	50%	30%	10%	50%	30%	10%	0
ρfc	20%			20%			20%			20%			20%			0
RCR	RCR:Room Cavity Ratio						Wall Exitance Coefficients(WEC)									
0.0																
1.0	.277	.158	.050	.270	.154	.049	.256	.147	.047	.243	.140	.045	.232	.134	.043	
2.0	.268	.147	.045	.261	.144	.044	.249	.139	.043	.238	.134	.042	.228	.129	.041	
3.0	.252	.134	.040	.246	.132	.040	.235	.128	.039	.225	.124	.038	.216	.120	.037	
4.0	.235	.122	.036	.230	.120	.036	.220	.117	.035	.212	.114	.034	.203	.110	.034	
5.0	.219	.112	.032	.215	.110	.032	.206	.107	.032	.198	.105	.031	.191	.102	.031	
6.0	.204	.102	.029	.200	.101	.029	.193	.099	.029	.186	.096	.028	.179	.094	.028	
7.0	.191	.095	.027	.188	.093	.027	.181	.091	.026	.174	.089	.026	.168	.087	.026	
8.0	.179	.088	.025	.176	.087	.024	.170	.085	.024	.164	.083	.024	.159	.082	.024	
9.0	.169	.082	.023	.166	.081	.023	.160	.079	.022	.155	.078	.022	.150	.076	.022	
10.0	.159	.076	.021	.156	.075	.021	.151	.074	.021	.147	.073	.021	.142	.071	.021	

ρcc	80%			70%			50%			30%			10%			0
ρw	50%	30%	10%	50%	30%	10%	50%	30%	10%	50%	30%	10%	50%	30%	10%	0
ρfc	20%			20%			20%			20%			20%			0
RCR	RCR:Room Cavity Ratio						Ceiling Cavity Exitance Coefficients(CCEC)									
0.0	.200	.200	.200	.171	.171	.171	.117	.117	.117	.067	.067	.067	.021	.021	.021	
1.0	.188	.166	.146	.161	.142	.126	.110	.098	.087	.063	.057	.051	.020	.018	.016	
2.0	.179	.142	.111	.153	.122	.096	.105	.084	.067	.060	.049	.039	.019	.016	.013	
3.0	.171	.124	.087	.146	.107	.075	.100	.074	.053	.058	.043	.031	.019	.014	.010	
4.0	.163	.110	.070	.140	.095	.061	.096	.066	.043	.056	.039	.025	.018	.013	.008	
5.0	.156	.100	.059	.134	.086	.051	.092	.060	.036	.053	.035	.021	.017	.012	.007	
6.0	.149	.091	.050	.128	.079	.044	.088	.055	.031	.051	.033	.018	.017	.011	.006	
7.0	.142	.085	.044	.122	.073	.038	.085	.051	.027	.049	.030	.016	.016	.010	.005	
8.0	.136	.079	.039	.117	.068	.034	.081	.048	.024	.047	.028	.014	.015	.009	.005	
9.0	.130	.074	.036	.112	.064	.031	.078	.045	.022	.045	.027	.013	.015	.009	.004	
10.0	.125	.070	.033	.108	.060	.029	.075	.042	.020	.044	.025	.012	.014	.008	.004	

C Range: 0 - 360DEG
 C Interval: 45.0DEG
 Test Speed: HIGH
 Temperature:25.3DEG
 Operators:
 Test Date:2022-09-23

γ Range: 0 - 180DEG
 γ Interval: 1.0DEG
 Test System:EVERFINE GO-2000A_V1 SYSTEM V2.00.446
 Humidity:65.0%
 Test Distance:10.450m [K=1.0000]
 Remarks:

UGR(Unified Glare Rating) Table

Test:U:240.20V I:0.0380A P:8.3700W PF:0.9160 Freq:49.99Hz Lamp Flux:878.676x1 lm		
NAME: ID-R-8W-CC 4000K	TYPE: 8W	WEIGHT:
SPEC.: 4000K	DIM.:	SERIAL No.:
MFR.:	SUR.: 0.005	Shielding Angle:

ceiling/cavity	0.7	0.7	0.5	0.5	0.3	0.7	0.7	0.5	0.5	0.3
walls	0.5	0.3	0.5	0.3	0.3	0.5	0.3	0.5	0.3	0.3
working plane	0.2	0.2	0.2	0.2	0.2	0.2	0.2	0.2	0.2	0.2
Room dimensions	Viewed crosswise					Viewed endwise				
x = 2H y = 2H	26.8	28.2	27.0	28.4	28.6	26.4	27.8	26.7	28.1	28.3
3H	28.0	29.3	28.3	29.6	29.8	27.4	28.7	27.7	28.9	29.2
4H	28.4	29.7	28.7	29.9	30.2	27.6	28.8	27.9	29.1	29.4
6H	28.6	29.8	28.9	30.0	30.3	27.6	28.8	27.9	29.0	29.3
8H	28.6	29.7	28.9	30.0	30.3	27.5	28.7	27.9	29.0	29.3
12H	28.6	29.6	28.9	29.9	30.3	27.5	28.6	27.9	28.9	29.2
4H 2H	27.2	28.5	27.5	28.7	29.0	26.9	28.2	27.3	28.5	28.7
3H	28.6	29.7	29.0	30.0	30.3	28.1	29.1	28.4	29.5	29.8
4H	29.1	30.1	29.5	30.4	30.8	28.3	29.3	28.7	29.7	30.0
6H	29.3	30.2	29.7	30.6	31.0	28.4	29.3	28.8	29.6	30.0
8H	29.4	30.2	29.8	30.5	31.0	28.4	29.2	28.8	29.6	30.0
12H	29.3	30.1	29.8	30.5	30.9	28.3	29.1	28.8	29.5	29.9
8H 4H	29.2	30.0	29.6	30.4	30.8	28.5	29.3	28.9	29.7	30.1
6H	29.4	30.1	29.9	30.5	31.0	28.5	29.2	29.0	29.6	30.1
8H	29.5	30.1	30.0	30.5	31.0	28.5	29.1	29.0	29.6	30.0
12H	29.5	30.0	30.0	30.5	31.0	28.5	29.0	29.0	29.5	30.0
12H 4H	29.1	29.9	29.6	30.3	30.7	28.4	29.2	28.9	29.6	30.0
6H	29.4	30.0	29.9	30.5	30.9	28.5	29.1	29.0	29.6	30.0
8H	29.5	30.0	30.0	30.4	30.9	28.5	29.0	29.0	29.5	30.0
Variations with the observer position at spacings(CIE Pub.117):										
S = 1.0H	+ 0.2 / - 0.3					+ 0.3 / - 0.4				
1.5H	+ 0.2 / - 0.3					+ 0.2 / - 0.5				
2.0H	+ 0.4 / - 0.4					+ 0.4 / - 0.5				

CIE Pub.117, 878.7 lm Total Lamp Luminous Flux Corrected (8log(F/F0) = -0.4)
Area: 0.005 m2

C Range: 0 - 360DEG
C Interval: 45.0DEG
Test Speed: HIGH
Temperature:25.3DEG
Operators:
Test Date:2022-09-23

γ Range: 0 - 180DEG
γ Interval: 1.0DEG
Test System:EVERFINE GO-2000A_V1 SYSTEM V2.00.446
Humidity:65.0%
Test Distance:10.450m [K=1.0000]
Remarks:

UTILIZATION FACTORS TABLE

Test:U:240.20V I:0.0380A P:8.3700W PF:0.9160 Freq:49.99Hz Lamp Flux:878.676x1 lm		
NAME: ID-R-8W-CC 4000K	TYPE: 8W	WEIGHT:
SPEC.: 4000K	DIM.:	SERIAL No.:
MFR.:	SUR.: 0.005	Shielding Angle:

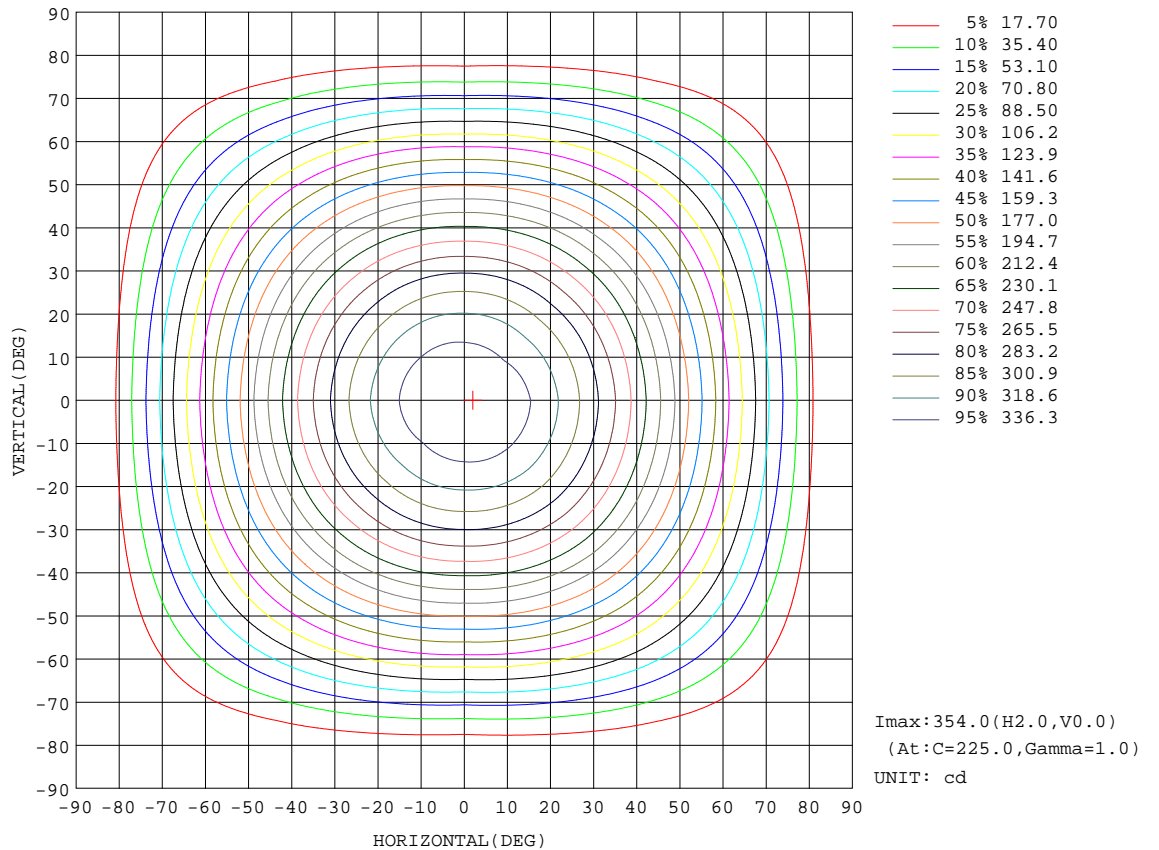
REFLECTANCE										
Ceiling	0.8	0.8	0.8	0.7	0.7	0.7	0.5	0.5	0.5	0
Walls	0.7	0.5	0.3	0.7	0.5	0.3	0.7	0.5	0.3	0
Working plane	0.2	0.2	0.2	0.2	0.2	0.2	0.2	0.2	0.2	0
ROOM INDEX	UTILIZATION FACTORS(PERCENT) $k(RI) \times RCR = 5$									
k = 0.60	60	49	42	59	48	42	58	48	42	36
0.80	70	59	52	69	59	52	67	58	51	45
1.00	79	68	61	77	67	61	75	69	60	53
1.25	86	76	69	84	75	69	81	73	68	61
1.50	90	81	75	89	80	74	86	78	73	66
2.00	97	89	83	95	88	82	92	86	81	73
2.50	101	93	88	98	92	87	95	89	85	77
3.00	104	97	92	102	96	91	97	93	89	81
4.00	107	102	98	105	100	97	101	97	94	85
5.00	110	105	102	107	103	100	102	99	97	87
ROOM INDEX	UF(total)									Direct
According to DIN EN 13032-2 2004			Suspended				SHRNOM = 1.25			

C Range: 0 - 360DEG
 C Interval: 45.0DEG
 Test Speed: HIGH
 Temperature:25.3DEG
 Operators:
 Test Date:2022-09-23

γ Range: 0 - 180DEG
 γ Interval: 1.0DEG
 Test System:EVERFINE GO-2000A_V1 SYSTEM V2.00.446
 Humidity:65.0%
 Test Distance:10.450m [K=1.0000]
 Remarks:

ISOCANDELA DIAGRAM

Test:U:240.20V I:0.0380A P:8.3700W PF:0.9160 Freq:49.99Hz Lamp Flux:878.676x1 lm		
NAME: ID-R-8W-CC 4000K	TYPE: 8W	WEIGHT:
SPEC.: 4000K	DIM.:	SERIAL No.:
MFR.:	SUR.: 0.005	Shielding Angle:



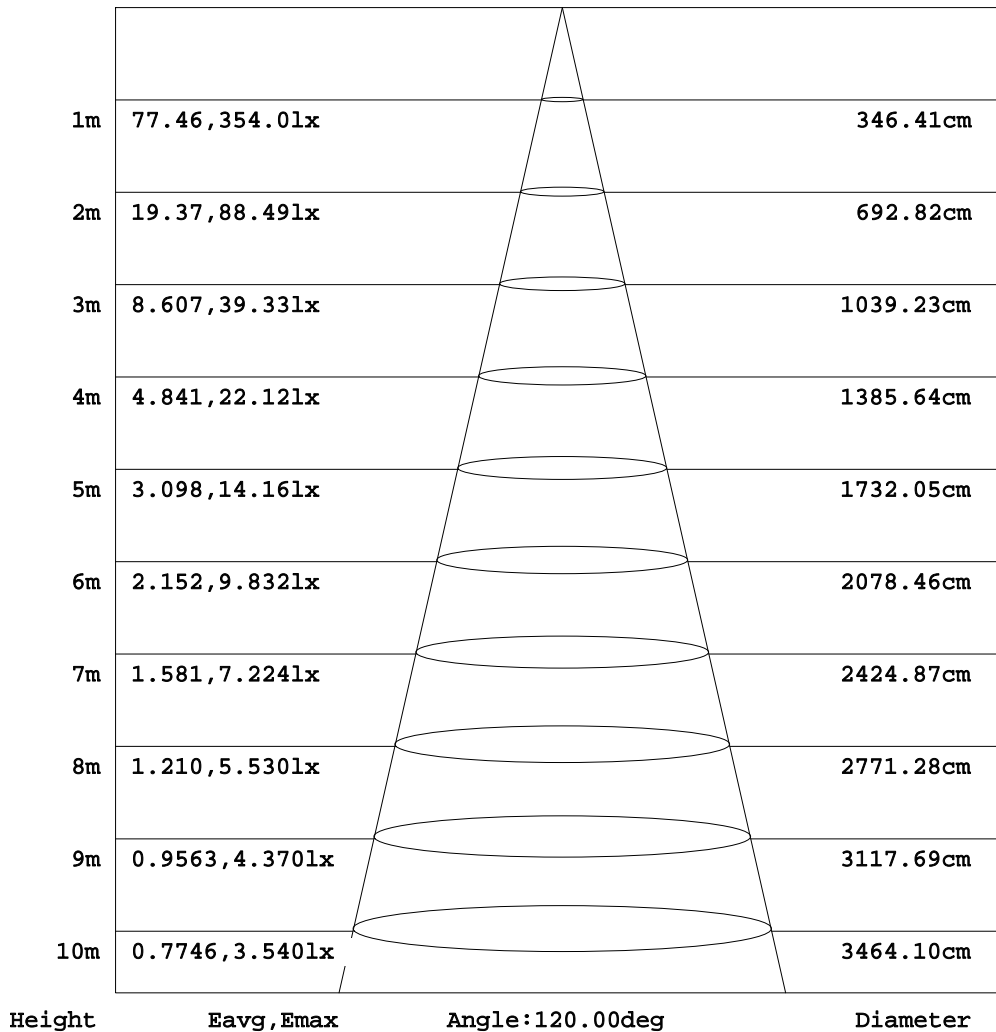
C Range: 0 - 360DEG
 C Interval: 45.0DEG
 Test Speed: HIGH
 Temperature: 25.3DEG
 Operators:
 Test Date: 2022-09-23

γ Range: 0 - 180DEG
 γ Interval: 1.0DEG
 Test System: EVERFINE GO-2000A_V1 SYSTEM V2.00.446
 Humidity: 65.0%
 Test Distance: 10.450m [K=1.0000]
 Remarks:

AAI Figure

Test:U:240.20V I:0.0380A P:8.3700W PF:0.9160 Freq:49.99Hz Lamp Flux:878.676x1 lm		
NAME: ID-R-8W-CC 4000K	TYPE: 8W	WEIGHT:
SPEC.: 4000K	DIM.:	SERIAL No.:
MFR.:	SUR.: 0.005	Shielding Angle:

Flux out:730.1 lm



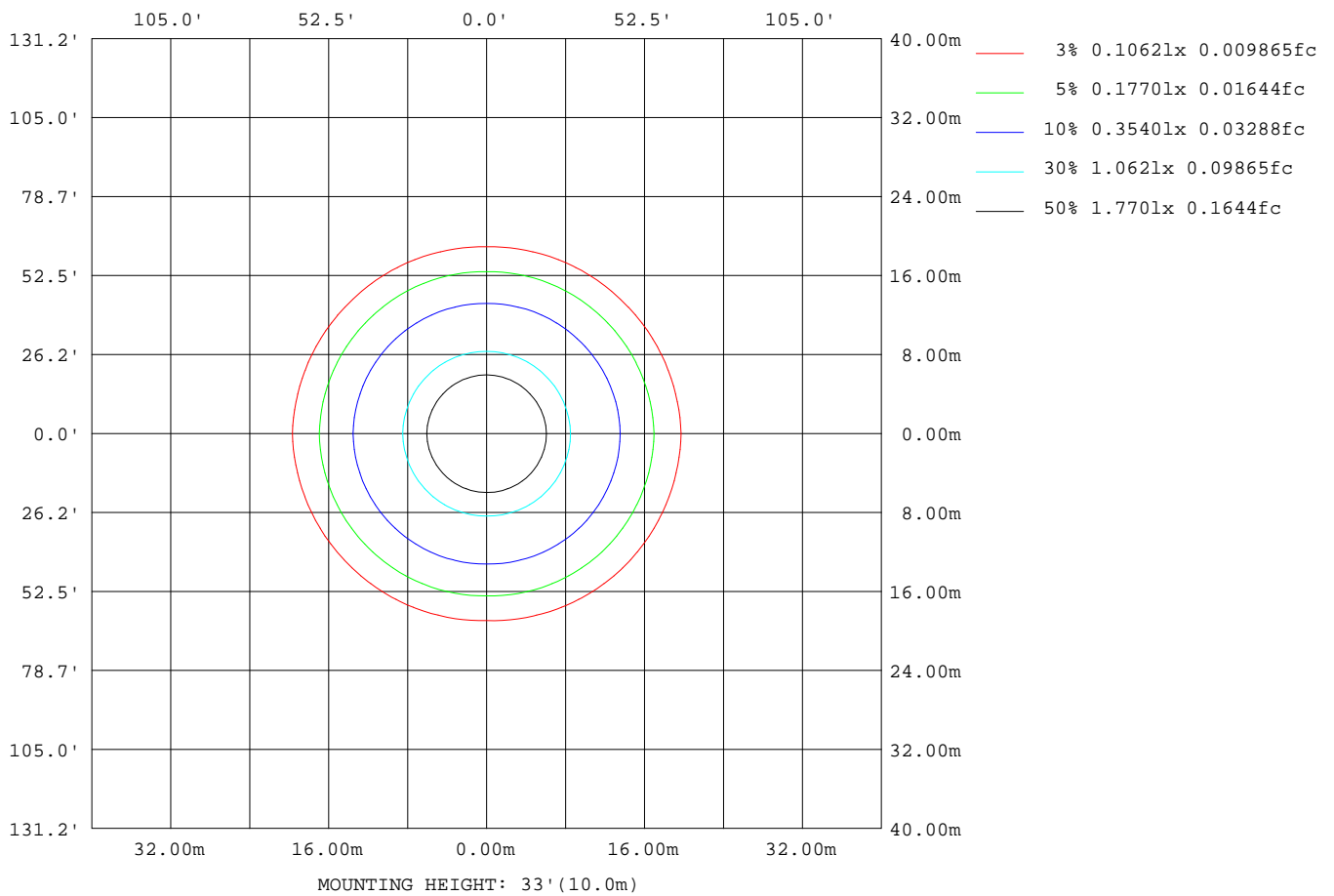
Note:The Curves indicate the illuminated area and the average illumination when the luminaire is at different distance.

C Range: 0 - 360DEG
C Interval: 45.0DEG
Test Speed: HIGH
Temperature:25.3DEG
Operators:
Test Date:2022-09-23

γ Range: 0 - 180DEG
γ Interval: 1.0DEG
Test System:EVERFINE GO-2000A_V1 SYSTEM V2.00.446
Humidity:65.0%
Test Distance:10.450m [K=1.0000]
Remarks:

ISOLUX DIAGRAM

Test:U:240.20V I:0.0380A P:8.3700W PF:0.9160 Freq:49.99Hz Lamp Flux:878.676x1 lm		
NAME: ID-R-8W-CC 4000K	TYPE: 8W	WEIGHT:
SPEC.: 4000K	DIM.:	SERIAL No.:
MFR.:	SUR.: 0.005	Shielding Angle:



C Range: 0 - 360DEG
 C Interval: 45.0DEG
 Test Speed: HIGH
 Temperature: 25.3DEG
 Operators:
 Test Date: 2022-09-23

γ Range: 0 - 180DEG
 γ Interval: 1.0DEG
 Test System: EVERFINE GO-2000A_V1 SYSTEM V2.00.446
 Humidity: 65.0%
 Test Distance: 10.450m [K=1.0000]
 Remarks:

LED Avg.L Report

Test:U:240.20V I:0.0380A P:8.3700W PF:0.9160 Freq:49.99Hz Lamp Flux:878.676x1 lm		
NAME: ID-R-8W-CC 4000K	TYPE: 8W	WEIGHT:
SPEC.: 4000K	DIM.:	SERIAL No.:
MFR.:	SUR.: 0.005	Shielding Angle:

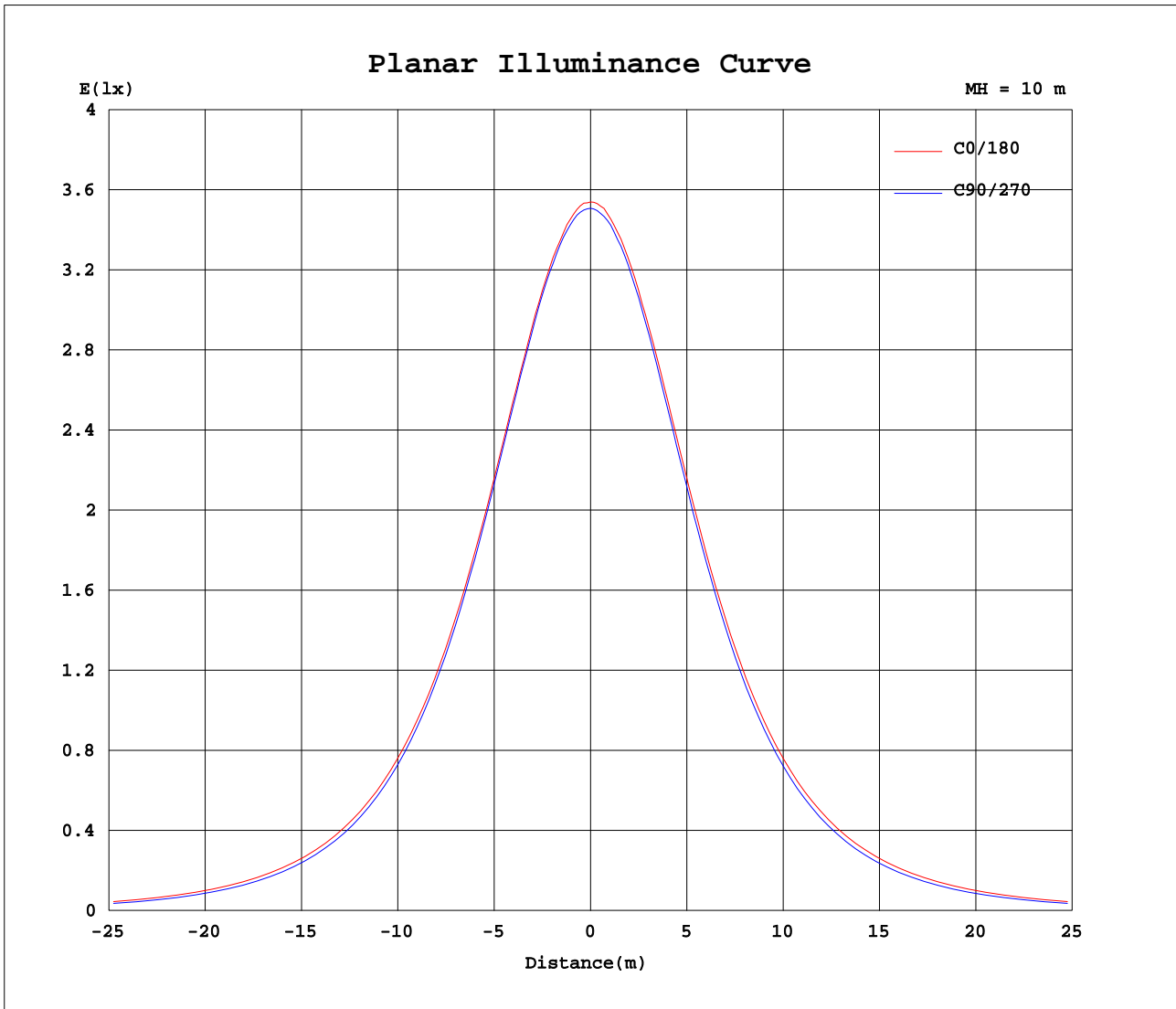
AvgL	cd/m2
L_0~180(65)av	48458
L_0~180(75)av	35891
L_0~180(85)av	11847
L_90~270(65)av	41138
L_90~270(75)av	22503
L_90~270(85)av	3319
L_45(65)av	44543
L_45(75)av	27852
L_45(85)av	5509

Standard: GB/T 29293-2012

C Range: 0 - 360DEG
 C Interval: 45.0DEG
 Test Speed: HIGH
 Temperature:25.3DEG
 Operators:
 Test Date:2022-09-23

γ Range: 0 - 180DEG
 γ Interval: 1.0DEG
 Test System:EVERFINE GO-2000A_V1 SYSTEM V2.00.446
 Humidity:65.0%
 Test Distance:10.450m [K=1.0000]
 Remarks:

Planar Illuminance Curve



C Range: 0 - 360DEG
 C Interval: 45.0DEG
 Test Speed: HIGH
 Temperature: 25.3DEG
 Operators:
 Test Date: 2022-09-23

γ Range: 0 - 180DEG
 γ Interval: 1.0DEG
 Test System: EVERFINE GO-2000A_V1 SYSTEM V2.00.446
 Humidity: 65.0%
 Test Distance: 10.450m [K=1.0000]
 Remarks:

LUMINOUS DISTRIBUTION INTENSITY DATA

Test:U:240.20V I:0.0380A P:8.3700W PF:0.9160 Freq:49.99Hz Lamp Flux:878.676x1 lm		
NAME: ID-R-8W-CC 4000K	TYPE: 8W	WEIGHT:
SPEC.: 4000K	DIM.:	SERIAL No.:
MFR.:	SUR.: 0.005	Shielding Angle:

Table--1

UNIT: cd

C (DEG) \ γ (DEG)	0	45	90	135	180	225	270	315											
0	352	352	352	352	352	352	352	352											
5	350	351	350	350	350	350	350	349											
10	344	345	344	344	344	344	344	343											
15	335	336	336	335	334	334	334	333											
20	322	323	322	322	322	321	320	320											
25	306	307	305	305	306	303	303	303											
30	286	286	284	285	286	283	282	283											
35	264	264	260	262	264	260	258	260											
40	240	239	235	237	240	235	232	235											
45	214	212	207	211	214	208	205	208											
50	187	184	178	183	187	180	176	181											
55	159	156	148	154	159	151	147	152											
60	131	126	118	124	131	122	117	123											
65	103	96.2	87.2	94.4	102	92.6	86.7	93.4											
70	74.2	66.4	57.0	64.4	73.7	63.1	56.8	63.9											
75	46.7	37.7	29.2	35.8	46.2	34.9	29.0	35.7											
80	21.4	13.6	9.28	12.7	21.0	11.9	9.25	12.5											
85	5.26	2.70	1.42	2.37	5.07	2.15	1.47	2.38											
90	0.36	0.30	0.26	0.29	0.30	0.26	0.23	0.27											
95	0.44	0.46	0.51	0.46	0.45	0.34	0.35	0.35											
100	0.68	0.69	0.57	0.67	0.63	0.56	0.51	0.53											
105	0.92	0.90	0.83	0.92	0.82	0.77	0.72	0.75											
110	1.22	1.17	1.10	1.19	1.07	0.99	0.96	1.01											
115	1.51	1.47	1.40	1.46	1.37	1.24	1.22	1.24											
120	1.81	1.77	1.70	1.74	1.63	1.51	1.51	1.49											
125	2.10	2.02	2.00	2.02	1.84	1.78	1.74	1.79											
130	2.42	2.28	2.32	2.26	2.10	2.03	2.01	2.05											
135	2.60	2.55	2.40	2.52	2.35	2.28	2.28	2.29											
140	2.85	2.81	2.62	2.77	2.61	2.46	2.55	2.47											
145	2.91	3.01	2.89	2.97	2.83	2.69	2.76	2.68											
150	3.25	3.22	3.34	3.17	2.95	2.89	2.96	2.90											
155	3.44	3.45	3.55	3.38	3.10	3.07	3.20	3.06											
160	3.58	3.58	3.70	3.54	3.24	3.21	3.28	3.23											
165	3.74	3.69	3.83	3.63	3.39	3.37	3.41	3.38											
170	3.69	3.79	3.69	3.73	3.56	3.55	3.56	3.52											
175	3.77	3.87	3.76	3.82	3.69	3.67	3.70	3.66											
180	3.85	3.94	3.84	3.91	3.85	3.92	3.85	3.91											

C Range: 0 - 360DEG
 C Interval: 45.0DEG
 Test Speed: HIGH
 Temperature:25.3DEG
 Operators:
 Test Date:2022-09-23

γ Range: 0 - 180DEG
 γ Interval: 1.0DEG
 Test System:EVERFINE GO-2000A_V1 SYSTEM V2.00.446
 Humidity:65.0%
 Test Distance:10.450m [K=1.0000]
 Remarks: