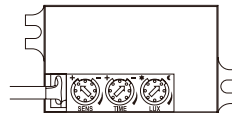


## Sensor Specifications (For Sensor Version)

|                           |  |
|---------------------------|--|
| Operating voltage         | AC220-240V   |
| Power consumption         | 1W max   |
| Microwave frequency       | -  |
| Transmission power        | -  |
| Detection angle           | 90°  |
| Detection Area            | 2-3M Knob adjustable                                 |
| Hold time                 | 10S-7min Knob adjustable                             |
| Daylight sensor           | 10-2000lux Knob adjustable                           |
| Stand-by DIM Level        | -  |
| Stand-by Period           | -  |
| Dimming Range             | -  |
| Microwave ON/OFF function | -  |
| Installation Height       | Recommended height is 2.5m                           |
| Minimum mounting distance | Recommended mounting distance should be more than 2m |
| Operating temperature(°C) | 25°C   |

## Sensor Settings

| Factory Settings |           |                 |
|------------------|-----------|-----------------|
| Detection Area   | Hold Time | Daylight Sensor |
| 100%             | 10S       | 10lux           |



### Detection area:

The detection area can be adjusted by the knob, clockwise adjustment increases the sensitivity, counterclockwise adjustment reduces the sensitivity. The maximum detection distance is 6 meters, the minimum detection distance is 2 meters.

Notice 1: The distance test is carried out under 25°C, 1.8 meters wall mounting installation height. The test result is based on the movement along the tangential direction of the sensor, and the detect distance can be adjusted by the dial switch.

Notice 2: Infrared sensor will be affected by temperature. Too high or too low temperature may affect the detect distance or even cause failure to sensor.

SENS



### Hold time:

The hold time can be adjusted by the knob. Clockwise adjustment increases the hold time, counterclockwise adjustment reduces the hold time, the maximum hold time is 7min, and the minimum hold time is 10S.

Notice 1: The hold time counting should be started after the sensor is powered on and initialized.

TIME



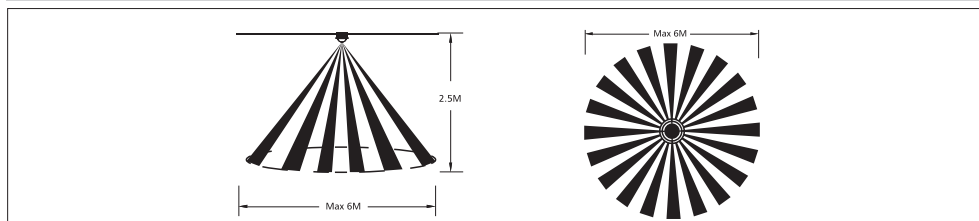
### Daylight sensor:

The light threshold can be selected through the Knob. Clockwise adjustment increases the light threshold, counterclockwise adjustment reduces the light threshold, the maximum light threshold is 2000lux, and the minimum light threshold is 10lux.

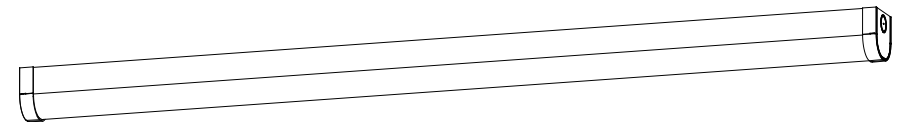
Notice 1: The light threshold may cause a large deviation in different lamps.

LUX

## Detection Range Diagram



# INSTALLATION MANUAL



## 20W/25W/35W/40W MULTI-WATT LED

**BATTEN**

E-B40W  
E-B40W-E

## Important Safety Instructions

To ensure correct function and safety, please read and follow all instructions carefully before using the product:

1. Turn off power supply before installation or before doing any maintenance work.
2. Do not install any luminaire near the heat source.
3. Do not exceed the nominal supply voltage or amperage ratings.
4. All wiring and installation of the light fitting must adhere to local and national wiring rules.
5. Take care not to pull any electrical wires during unpacking as this may damage the connection.
6. Lay out all the components on a smooth surface and make sure there are no components missing before assembling.
7. To avoid injury or damage to the fitting, please ensure that power leads and screws are secure before connecting the power.
8. Please keep instructions for future reference.
9. Please refer to IP(Ingress Protection) rating of this luminaire when deciding the location of installation.
10. To achieve the best using effect, the battery should be charged and discharged every six months (for Emergency products only).
11. The battery in this luminaire shall only be replaced by the manufacture or a qualified person.
12. Not suitable for Functional Safety as an Emergency luminaire under the Australian Building Code.

## Installation Procedure

### WARNING ⚡

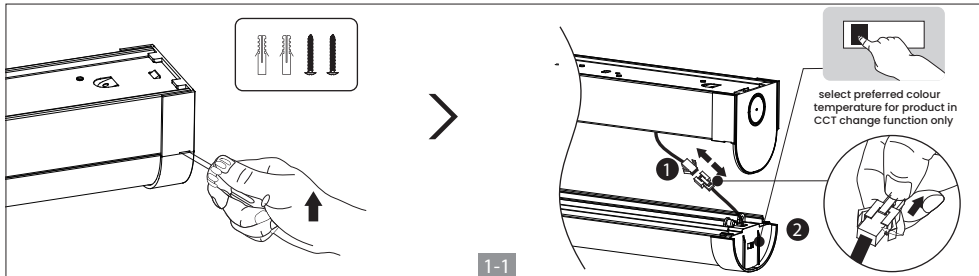
1. Switch off before installation.
2. Switch on only after complete installation and examination of the circuit.
3. Qualified electrician for installation and maintenance only.



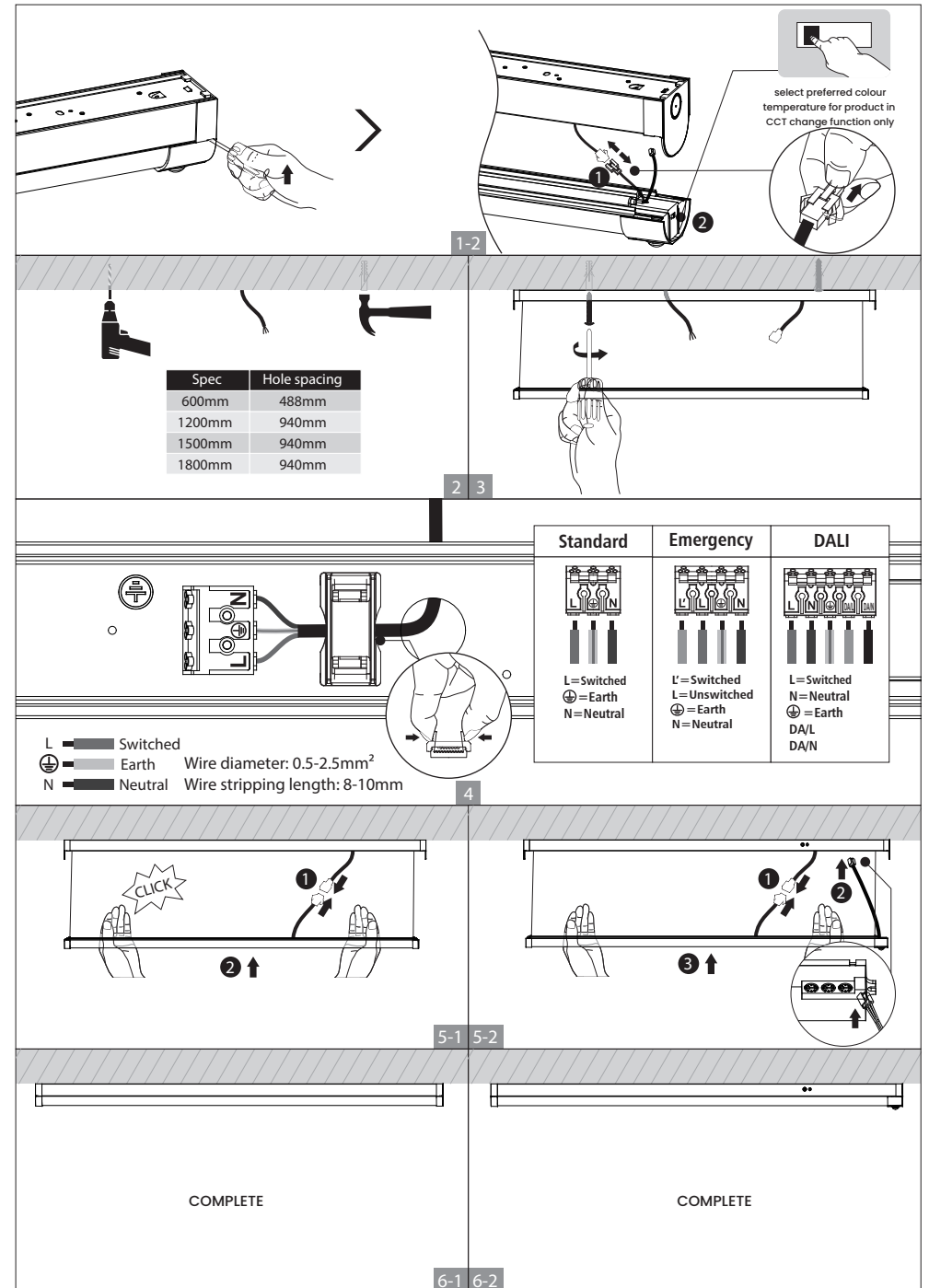
Turn off power supply before starting any installation.

Read instructions & check you have all the tools & accessories to complete the installation correctly.

## Surface Mount Installation



1-1



1-2

2 3

4





5-1 5-2

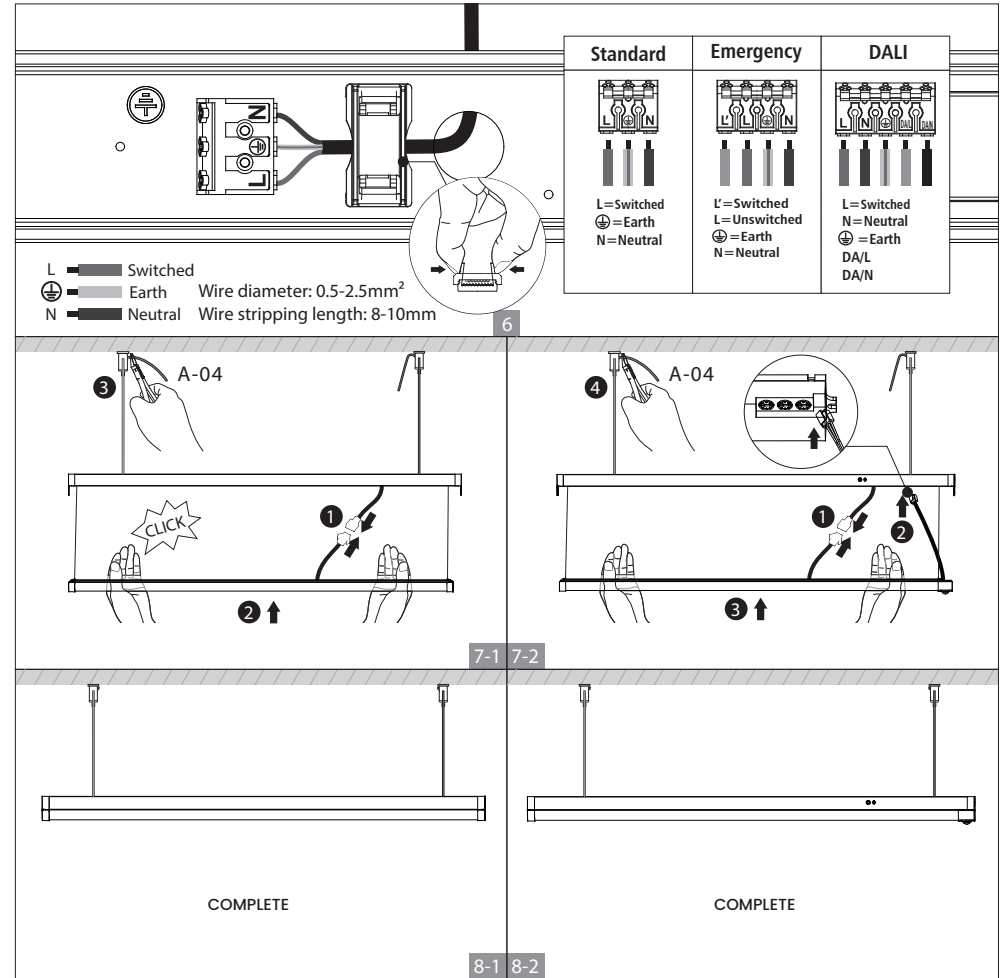
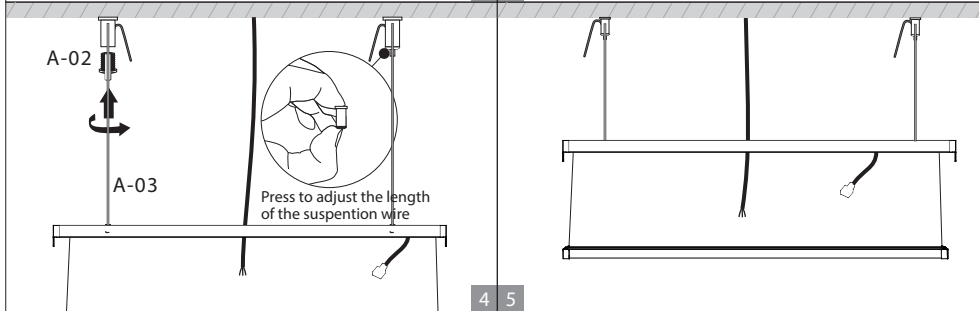
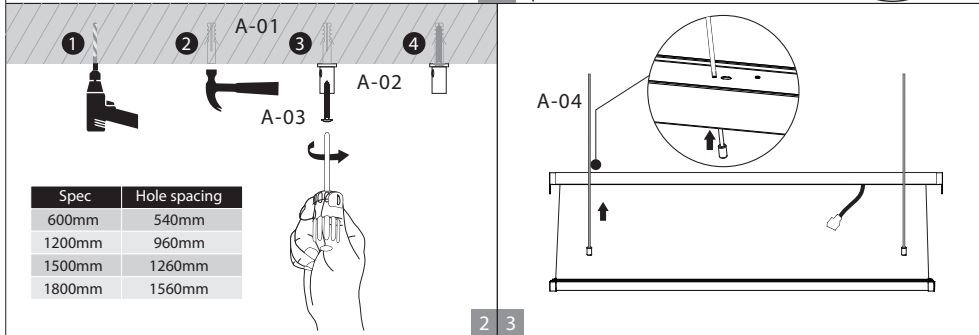
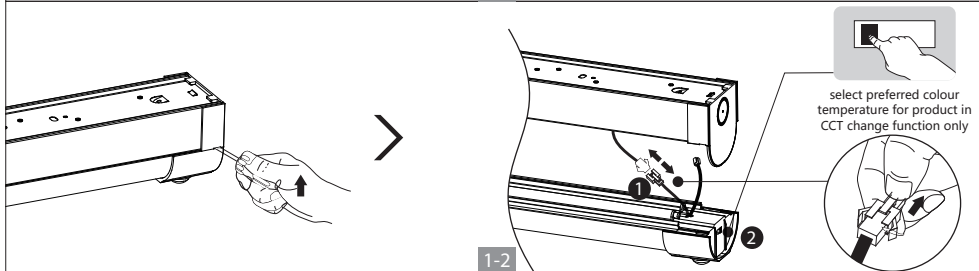
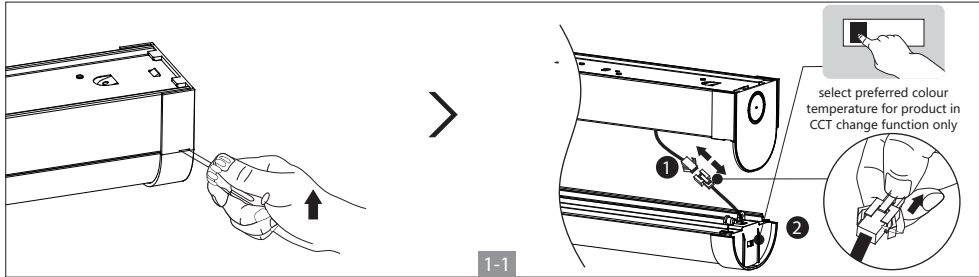
6-1 6-2

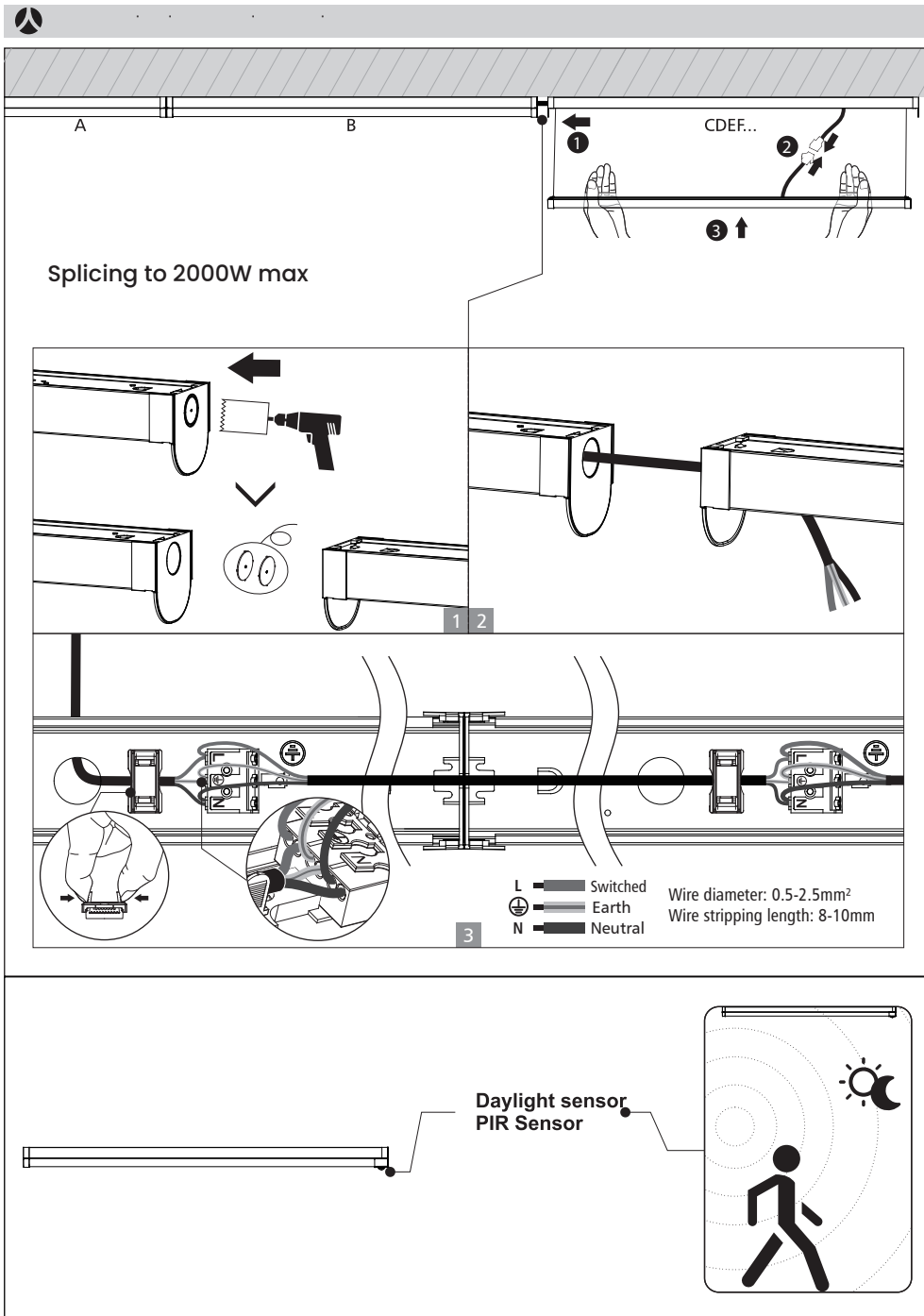
COMPLETE

COMPLETE

## Suspended Installation

|      |  |  |  |   |
|------|--|--|--|---|
| Code | A-01  | A-02  | A-03  | A-04  |
| ACC  | x2   | x2   | x2   | x2  |





**Function Instructions (For specific function, please refer to actual model)**



**Emergency**

Emergency function switches automatically between power cut and power restoration.

- Li battery, high efficiency
- Battery duration: 3 hours
- Charge period: 24 hours



**Sensor**

Detection area: 90 degree wide detective beam angle with 2-3 meters distance

**Driver Specifications (Emergency)**

|                                |                        |
|--------------------------------|------------------------|
| Input power                    | 3W                     |
| Discharge power                | 3W                     |
| Rated Input Voltage(V)         | AC230V                 |
| Frequency                      | 50/60Hz                |
| Input Voltage                  | AC200-240V             |
| Rated Input Current            | ≤0.03A                 |
| Battery                        | 6.4V 1500mAh (LifepO4) |
| Lifetime                       | Over 2000 cycles       |
| Battery duration               | ≥3hrs                  |
| Charge Period                  | ≤24hrs                 |
| Emergency switching time       | ≤1S                    |
| Emergency Operating Temp. (°C) | 0°C-25°C               |

**Instructions for automatic test option**

**1. Once the unit is powered up it will automatically initiate a self test and diagnostics as follows:**

- Every 4 seconds: Check for battery disconnection, charger board fault, lamp failure and transformer failure.
- Every month: Perform a 3 minute duration test.
- Every year: Perform a 1 Hour or 3 Hour duration test.

All test functions are factory preset and do not need field adjustment.

**2. Dual Colour Indicator LED Status Meanings**

- Green Solid On Ready/Normal Operation
- Red Requires Service

|           |                                |                       |
|-----------|--------------------------------|-----------------------|
| •         | One flash, 4 seconds pause     | Battery not connected |
| • •       | Two flashes, 4 seconds pause   | Low battery voltage   |
| • • •     | Three flashes, 4 seconds pause | Charger board fault   |
| • • • •   | Four flashes, 4 seconds pause  | Transformer fault     |
| • • • • • | Five flashes, 4 seconds pause  | LED lamp fault        |

**NOTE:** After repairing a service fault, press and hold the test button for 2 seconds to reset the flashing indicator light to green.

**3. Manual Test**

|  |                            |
|--|----------------------------|
| Press test button once                     | 30 seconds duration test   |
| Press test button twice within 2 seconds   | 3 minutes duration test    |
| Press test button 3 times within 2 seconds | 30 minutes duration test   |
| Press test button 4 times within 2 seconds | 1 or 3 hours duration test |

Note: DALI & 1-10V driver specification, please refer to individual driver datasheet.