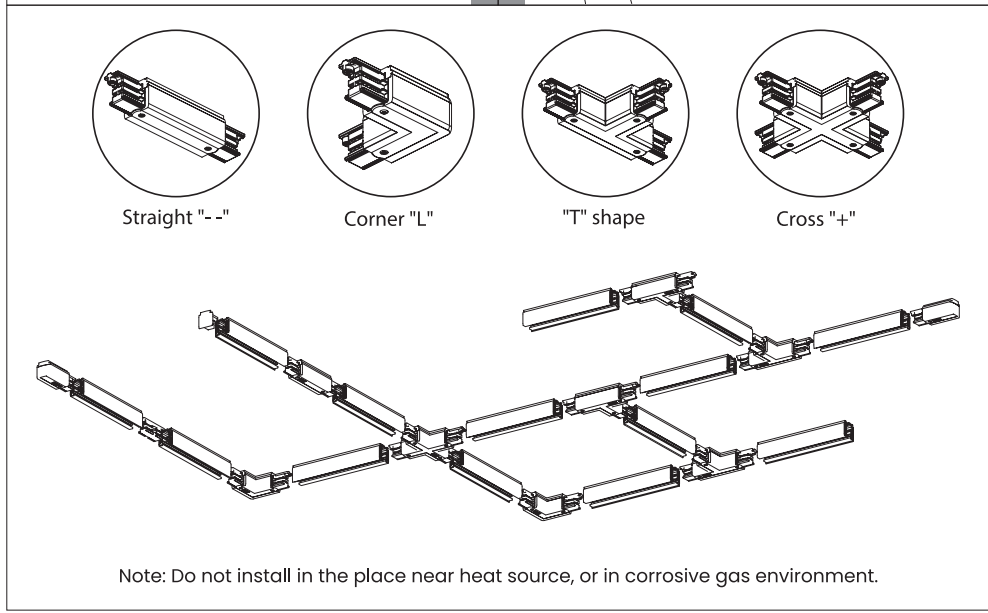
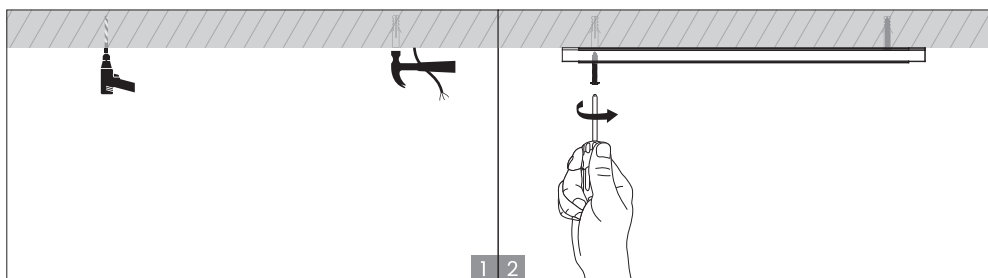
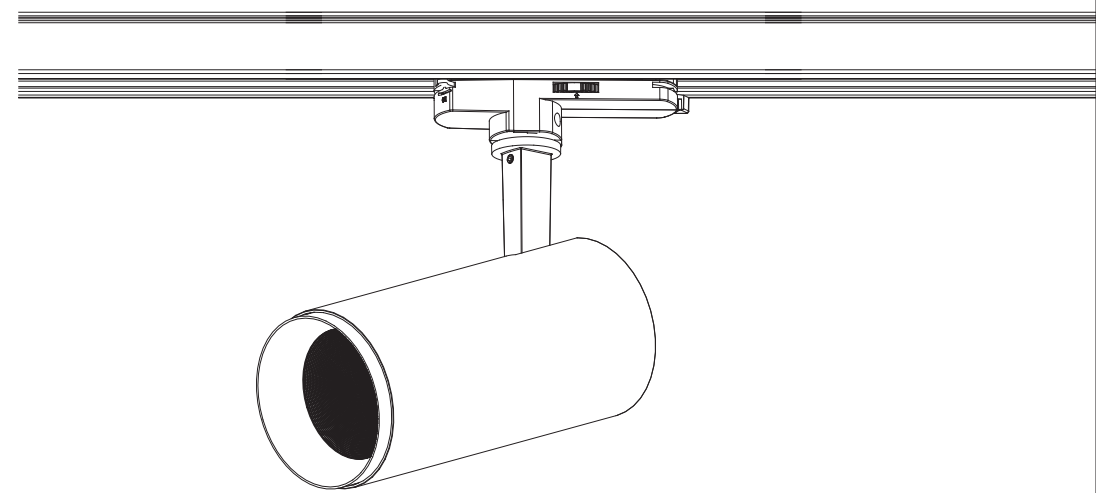


Installation for Track



INSTALLATION MANUAL



LED
TRACK LIGHT
TL10W, TL30W



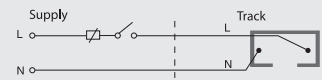
⚠ Important Safety Instructions

When installing or using this track system, basic safety precautions should always be followed, including the following:

1. Read all instructions
2. Do not cut any track sections.
3. For Indoor use only. Do not install this track in damp or wet locations.
4. Do not install any part of a track system less than 5 feet above the floor.
5. Do not install any luminaire assembly closer than 6 inches from any curtain, or similar combustible material.
6. Turn off power before installation or before doing any maintenance work.
7. Do not exceed the nominal supply voltage or amperage ratings.
8. Do not attempt to energise anything other than lighting track luminaires on the track. To reduce the risk of fire and electric shock, do not attempt to connect power tools, extension cords, appliances, and the like to the track.
9. Do not connect a track to more than one branch circuit unless the track is constructed so that it can be used with more than one branch circuit. Check with a qualified electrician. Although the track lighting system may see to operate acceptably, a dangerous overload of the neutral may occur and result in a risk of fire.
10. Wear rubber soled shoes and work on a sturdy wooded or non-conductive ladder.
11. Product must be mounted in location and at height in a manner consistent with its intended use, and in compliance with National Electrical Code and local building codes.

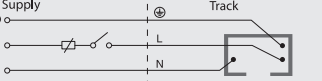
⚠ Wiring Diagram (Please select according to the actual product)

2-wires, 1-circuit



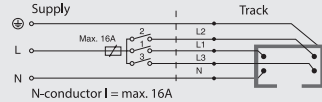
1-phase, 1-circuit, 230V AC, 16A , 3.7kV A

3-wires, 1-circuit

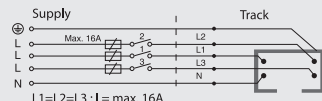


1-phase, 1-circuit, 230V AC, 16A , 3.7kV A

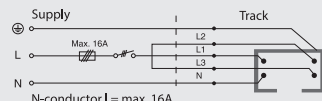
4-wires, 3-circuit



1-phase, 3-circuit, 230V AC, 16A , 3.7kV A

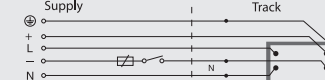


3-phase, 3-circuit, 230 / 400V AC, 16A , 3x3.7kV A



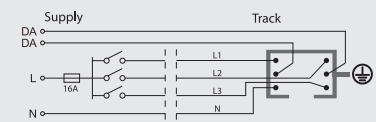
3-phase, 3-circuit, 230 / 400V AC, 16A , 11.1kVA

4-wires, 1-circuit (0-10V / DALI)

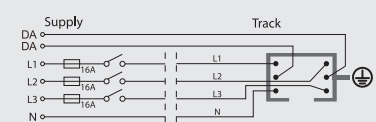


1-phase, 1-circuit, 230V AC, 16A , 3.7kV A

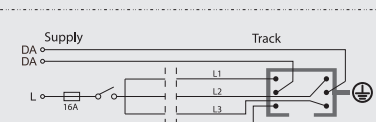
6-wires, 3-circuit (DALI)



1-phase, 3-circuit, 230V AC, 16A max

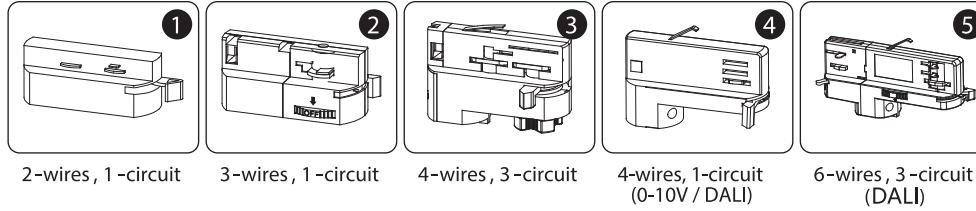


3-phase, 3-circuit, 230V AC, 16A max



1-phase, 3-circuit, 230V AC, 16A max

⚠ Select corresponding adapter before installation (Please select according to the actual product)



⚠ Installation Procedure

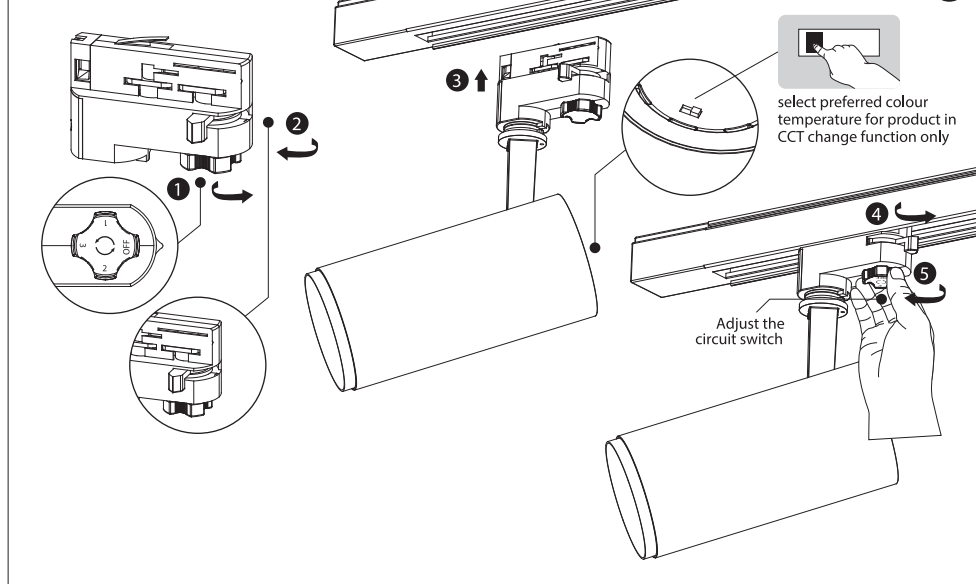
WARNING

1. Switch off before installation.
2. Switch on only after complete installation and examination of the circuit.
3. Professional electrician for installation and maintenance only

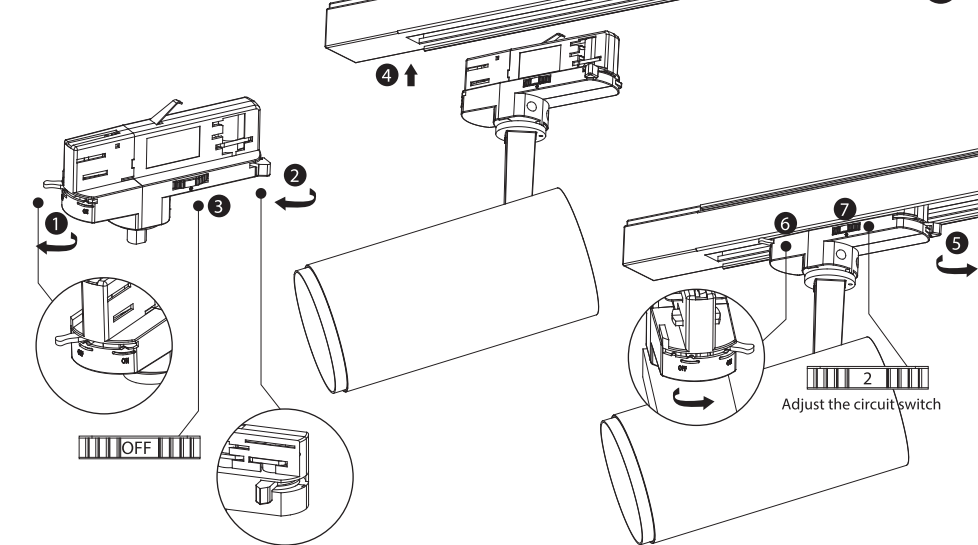


⚠ How to Install?

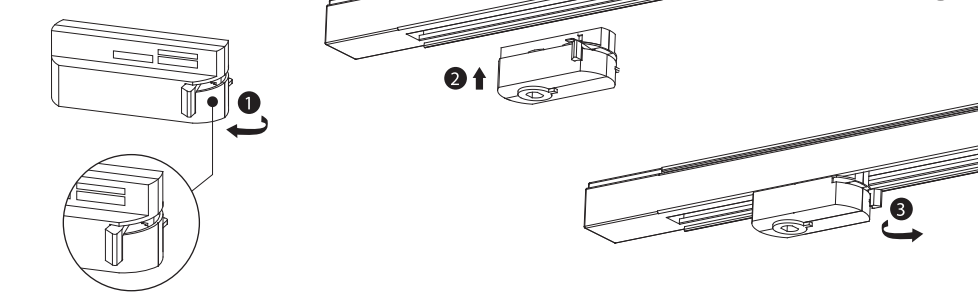
4-wires, 3-circuit



6-wires, 3-circuit (DALI)



2-wires, 1-circuit



3-wires, 1-circuit

