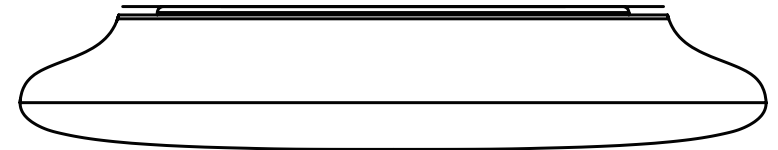


# INSTALLATION MANUAL



LED

**OYSTER LIGHT**

OY18W-CC

LED-OY25W-CC-IP54

## Safety Instructions

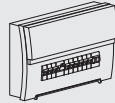
Basic safety precautions should always be followed when installing, including the following:

1. Read all instructions.
2. For indoor use only. Do not install this luminaires in damp or wet locations.
3. Do not install any luminaire near the heat source.
4. Turn off power before installation or before doing any maintenance work.
5. Do not exceed the nominal supply voltage or amperage ratings.
6. Dimmable version could be compatible with a wide range of recommended TRIAC dimmers.
7. Non-dimmable version not for use with dimmers.

## Installation Procedure

### WARNING

1. Switch off before installation.
2. Switch on only after complete installation and examination of the circuit.
3. Professional electrician for installation and maintenance only.

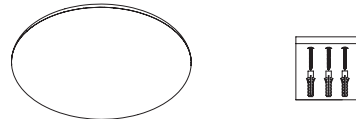


Turn Off power supply before starting any installation. Read instructions & check you have all the tools & accessories to complete the installation correctly.

## How to install

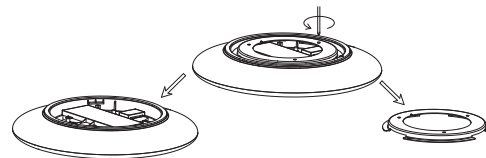
### Step 1

Take out ceiling light and accessory pack from box.



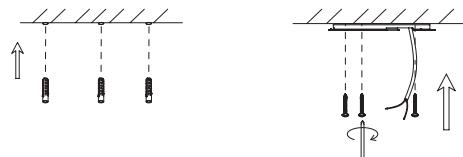
### Step 2

Using screwdriver turns the bracket in anticlockwise direction and taking it out.



### Step 3

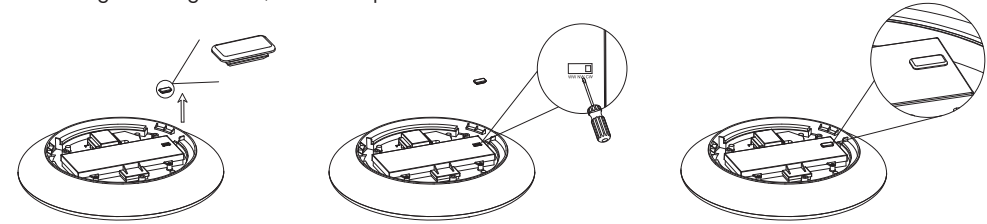
Determine mounting location and knock-in the plastic anchor into ceiling, fix bracket with screw into the ceiling.



## How to install (continued)

### Step 4

For color changeable model (controlled by Slide Switch in lamp), please select light color before mounting to ceiling or wall, see below picture.



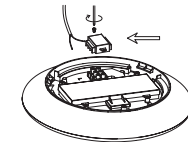
1. Take rubber stopper out from slide switch for color selection.

2. Choose color by slide switch with corresponding color temperature.

3. Insert rubber stopper back into slide switch properly.

### Step 5

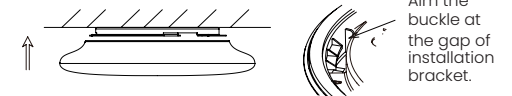
Switch off, wiring "live", "Neutral" to terminal block respectively.



L = BROWN  
N = BLUE

### Step 6

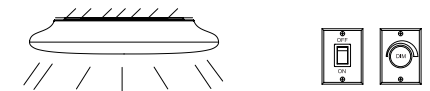
Aim the buckle at the the gap of installation bracket and push it upward, adjust the lamp's position clockwise and counter-clockwise to fit the lamp into the bracket, then rotate the lamp clockwise until it is fixed well.



Aim the buckle at the gap of installation bracket.

### Step 7

Connect the lamp to the mains supply after finish the installation.



The light source of this luminaire is not replaceable; when the light source reaches its end of life the whole luminaire shall be replaced.