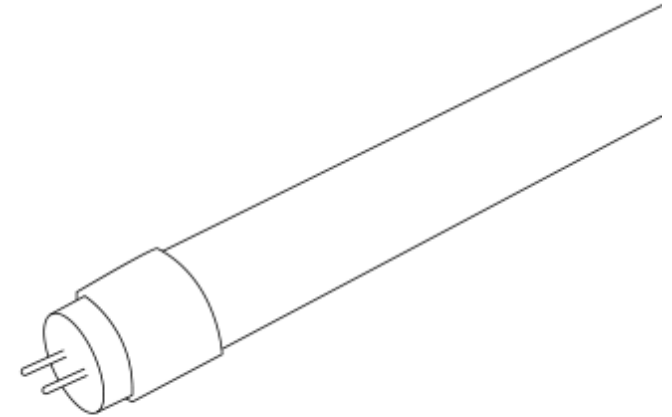


INSTALLATION MANUAL



Specifications

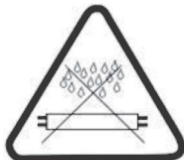
- 90-265V
- 10-26W
- 54-144pcs 2835 LED
- 900-2500 Lumen output
- 4000K / 6000K Colour temperatures
- 120° Beam angle
- 25,000 Hours life expectancy
- 3 Year guarantee
- IP20

Overview

This product has single end input according to CE regulation.

Important Information

1. Open the package, this should include a T8 LED Tube light, and an instruction manual
2. The LED Tube light is only suitable for interior or waterproof lighting. (see figure below).



3. Use only in 90-265V and -20° - 40°C.
4. Do not disassemble and modify the product.

Installation Instructions - PART I

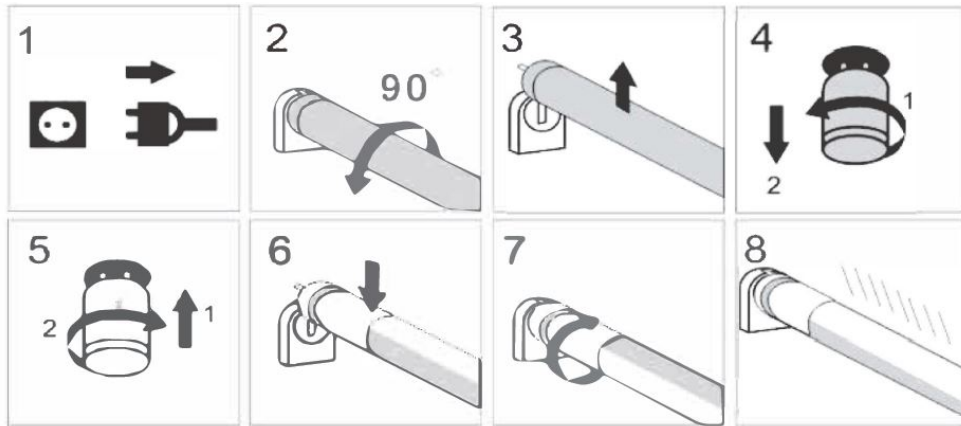
In order to ensure the LED Tube light works correctly and saves energy, please read this manual carefully before installation.

a. New luminaires



b. Retrofit traditional luminaires with Magnetic Ballast

- Step 1.** Switch off electricity.
- Step 2.** Turn the conventional tube light 90°.
- Step 3.** Remove the conventional tube light.
- Step 4.** Turn the starter anticlockwise and remove the starter.
- Step 5.** Click the LED starter into the starter holder and turn clockwise. (Fuse to be ordered separately)
- Step 6.** Insert the LED tube light into the lamp holder.
- Step 7.** Secure the position by turning the LED light by 90°.
- Step 8.** Switch on electricity.



Guarantee

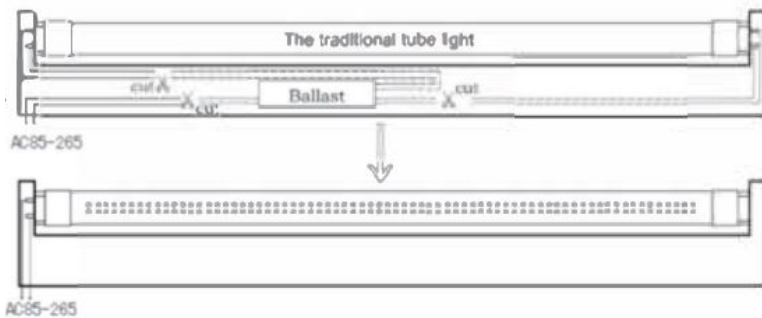
This product is guaranteed for a period of 3 years from the date of purchase. The guarantee is invalid in the case of improper use, tampering, removal of the Q.C. date label, installation in an improper working environment or installation not according to the current edition of the I.E.E. Wiring Regulations (BS7671).

The guarantee is also invalidated if the luminaire has been Mega tested. Should this product fall during the guarantee period it will be replaced free of charge, subject to correct installation and return of the faulty unit.

We do not accept responsibility for any installation costs associated with the replacement of this product. Your statutory rights are not affected. We reserve the right to alter specifications without prior notice.

- c. Retrofit traditional luminaires with electronic ballast
(To be done by a qualified electrician)

- Step 1.** Switch off electricity.
- Step 2.** Disconnect all wires that connect ballast.
- Step 3.** Remove the ballast.
- Step 4.** Rewiring as diagram below.
- Step 5.** Install LED Tube.



IMPORTANT:

How to quickly identify between magnetic or electronic ballasts:

Magnetic ballast system has a starter, there is no starter with an electronic ballast.

