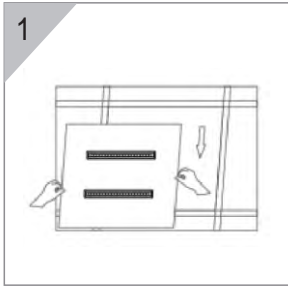
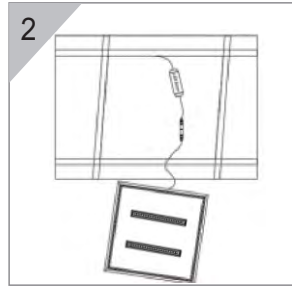


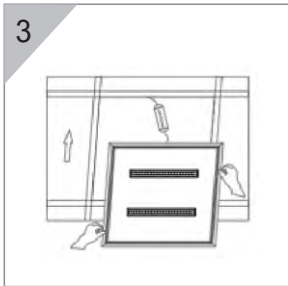
1. Take off Ceiling plaster tablet.



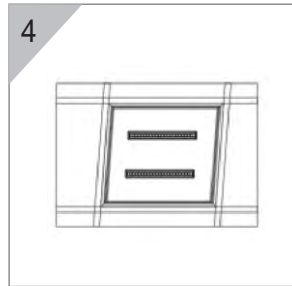
2. Connect the Wire.



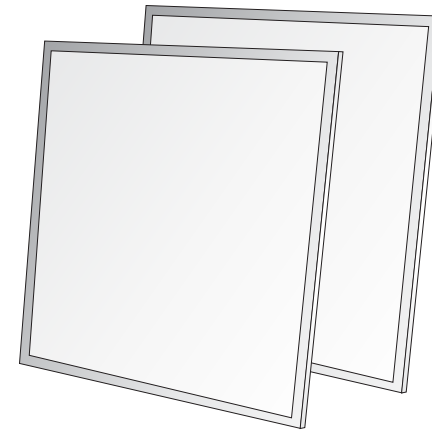
3. Fix the panel Light on into the ceiling screens.



4. After steady the panel light, you can connect the electric current to use.



INSTALLATION MANUAL



1800 909 306

nedlandsgroup.com.au

sales@nedlandsgroup.com.au

LED LIGHT

PANEL

UGR16-30W-60SQ

UGR16-30W-120/30

Safety Instructions

This installation must be carried out by an electrician. Please read these instructions carefully before installation. Leave a copy for the user/maintenance engineer for future reference.

This is a mains powered product. Before installation, maintenance or cleaning please ensure the power supply is isolated.

Maintenance

- Please ensure the fitting has cooled down prior to performing maintenance on this product.
- If the product is not damaged in transport, it is supplied ready to use.
- Clean using a dry cloth. No detergent or water to be used.

Notes

Voltage input: AC200-240V/50/60Hz, using the newest high efficiency constant current driver. Anti-electromagnetic interference, no mercury, no lead. Before using, please confirm that this product has not been damaged during transit.

Please keep packing material and small accessories far away from children. Avoid the eyes sighting the LED light-emitting area directly.

Please keep products and packaging away from open fire or high temperature goods. The fixture must not be modified. And modification will void the warranty and can make the product dangerous.

Please note the recommended clearance from the rear heat sink to any flammable materials is 0.2m. Under no circumstance should any insulation or similar be laid onto the fitting.

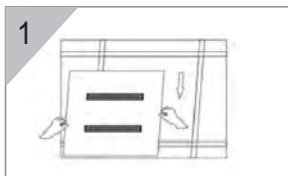
Applications

Hotel, meeting room, factory or office, residence or public facilities, commercial use, school, hospital and other environments.

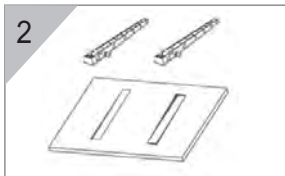
LED panel light for indoor using only.

Module Replacement

1. Turn off the power, take off the LED panel light.



2. Replace the LED module. Fix it with clasp.

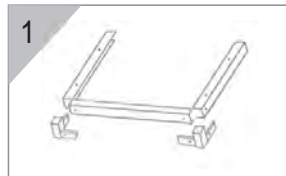


3. Fix the panel light on the ceiling frame.

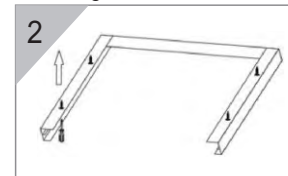


Surface Mount Installation

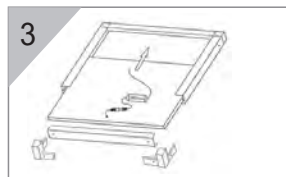
1. Fix the panel frame directly, no screws are needed.



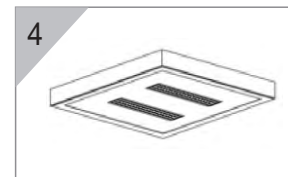
2. Fix the ceiling frame into the ceiling or wall.



3. Fix the panel light on the ceiling frame.

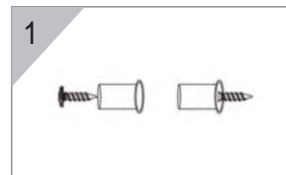


4. After steady the panel light, you can connect the electric current to use.

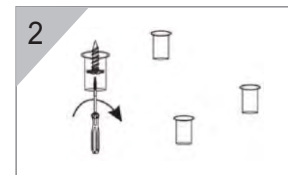


Suspended Installation

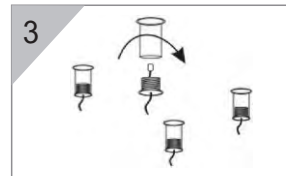
1. Take off the cassette and install the screw cassette.



2. Fix the cassette onto the ceiling.



3. Lock the Line controller into the cassette.



4. Adjust the length of the iron line well and connect the power supply, then you can power.

