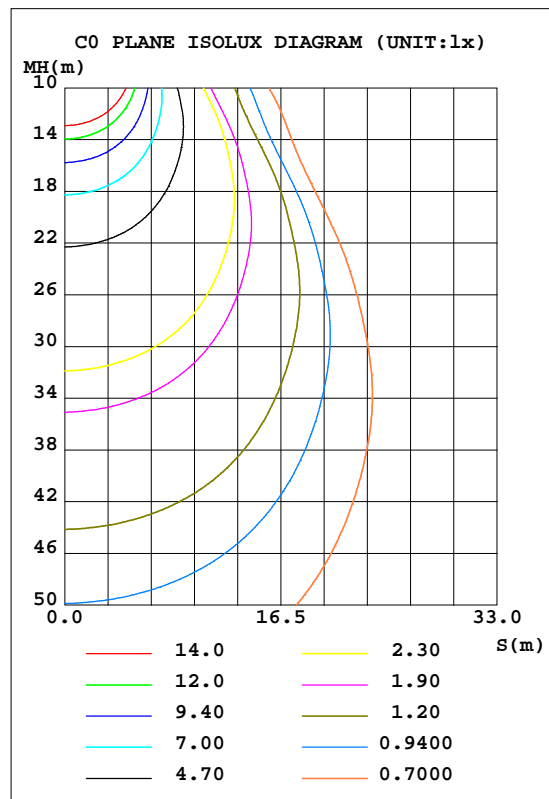
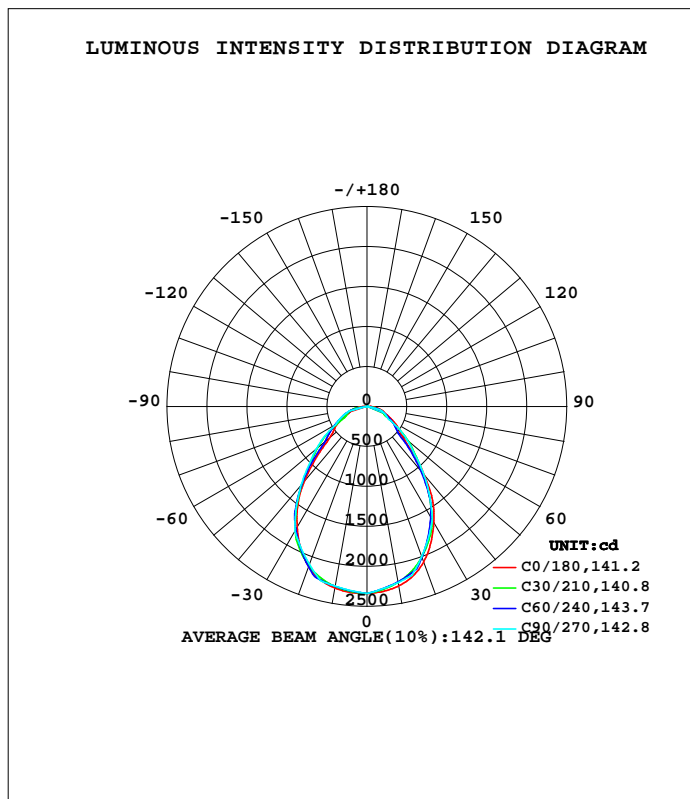


LUMINAIRE PHOTOMETRIC TEST REPORT

Test:U:220.1V I:0.2203A P:47.14W PF:0.9724 Lamp Flux:4333.5x1 lm		
NAME: 595X1195MM Cynosis Led Panel	TYPE:	WEIGHT:
SPEC.:4000K	DIM.: 595x1195mm	SERIAL No.:
MFR.:	SUR.:545x1145	Shielding Angle:

DATA OF LAMP		PHOTOMETRIC DATA				Eff: 91.92 lm/W
MODEL		I _{max} (cd)	2339	S/MH(C0/180)	1.13	
NOMINAL POWER(W)	47.1433	LOR(%)	100.0	S/MH(C90/270)	1.16	
RATED VOLTAGE(V)	220	TOTAL FLUX(lm)	4333.5	h UP, DN(C0-180)	0.0,47.4	
NOMINAL FLUX(lm)	4333.5	CIE CLASS	DIRECT	h UP, DN(C180-360)	0.0,52.6	
LAMPS INSIDE	1	h up(%)	0.0	CIBSE SHR NOM	1.00	
TEST VOLTAGE(V)	220	h down(%)	100.0	CIBSE SHR MAX	1.15	



C Range: 0 - 360DEG
 C Interval: 5.0DEG
 Test Speed: HIGH
 Temperature:26.3DEG
 Operators:
 Test Date:2019-04-25

Range: 0 - 90DEG
 Interval: 0.5DEG
 Test System:EVERFINE GO-2000B_V1 SYSTEM V2.0.350
 Humidity:65.0%
 Test Distance:10.257m [K=1.0000]
 Remarks:

ZONAL FLUX DIAGRAM

ZONAL FLUX DIAGRAM:

g	C0	C45	C90	C135	C180	C225	C270	C315	g	F zone	F total	%lum,lamp
5	2321	2290	2287	2301	2334	2317	2310	2307	0- 5	55.43	55.43	1.28,1.28
10	2279	2227	2235	2249	2306	2285	2282	2263	5- 10	163.4	218.8	5.05,5.05
15	2201	2142	2184	2176	2245	2233	2254	2198	10- 15	264.6	483.5	11.2,11.2
20	2072	2030	2001	2077	2132	2158	2104	2108	15- 20	352.2	835.7	19.3,19.3
25	1889	1822	1817	1876	1961	1980	1954	1922	20- 25	415.7	1251	28.9,28.9
30	1674	1588	1634	1648	1747	1771	1804	1709	25- 30	453.8	1705	39.3,39.3
35	1433	1337	1370	1403	1513	1551	1543	1484	30- 35	463.8	2169	50.1,50.1
40	1119	1063	1105	1132	1216	1307	1282	1235	35- 40	437.5	2607	60.1,60.1
45	804.8	818.3	840.2	867.0	889.6	1014	1021	965.1	40- 45	380.2	2987	68.9,68.9
50	577.1	635.4	662.0	673.0	607.8	786.5	830.6	758.2	45- 50	316.1	3303	76.2,76.2
55	484.8	475.7	483.8	512.3	501.5	620.5	640.0	591.3	50- 55	265.7	3569	82.3,82.3
60	394.3	377.9	305.6	406.8	421.7	504.3	449.5	473.4	55- 60	219.9	3788	87.4,87.4
65	303.6	295.0	260.9	312.6	322.0	387.5	376.2	366.2	60- 65	178.1	3967	91.5,91.5
70	235.4	225.7	216.3	235.2	245.2	292.5	302.9	279.8	65- 70	146.5	4113	94.9,94.9
75	197.1	156.8	171.7	164.3	206.2	220.9	229.6	210.8	70- 75	116.8	4230	97.6,97.6
80	137.2	79.94	0	85.61	146.5	132.9	0	126.6	75- 80	74.91	4305	99.3,99.3
85	80.57	0	0	0	85.29	0	0	0	80- 85	24.61	4329	99.9,99.9
90	36.75	0	0	0	25.44	0	0	0	85- 90	4.144	4333	100,100
95									90- 95			
100									95-100			
105									100-105			
110									105-110			
115									110-115			
120									115-120			
125									120-125			
130									125-130			
135									130-135			
140									135-140			
145									140-145			
150									145-150			
155									150-155			
160									155-160			
165									160-165			
170									165-170			
175									170-175			
180									175-180			
DEG	LUMINOUS INTENSITY:cd									UNIT:lm		

Conical surface Flux(90deg): 2986.8 lm

%lum = 68.9%
%lamp = 68.9%

Conical surface Flux(120deg): 3788.4 lm

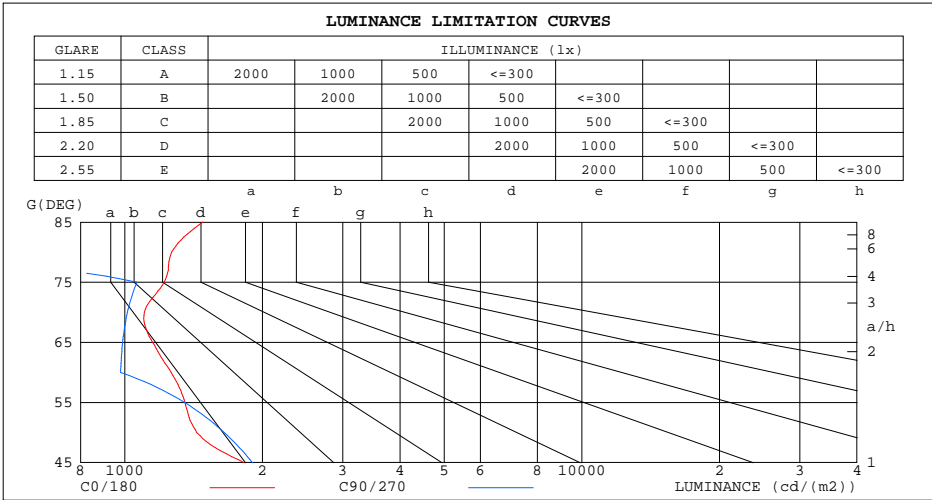
%lum = 87.4%
%lamp = 87.4%

C Range: 0 - 360DEG
C Interval: 5.0DEG
Test Speed: HIGH
Temperature:26.3DEG
Operators:
Test Date:2019-04-25

g Range: 0 - 90DEG
g Interval: 0.5DEG
Test System:EVERFINE GO-2000B_V1 SYSTEM V2.0.350
Humidity:65.0%
Test Distance:10.257m [K=1.0000]
Remarks:

LUMINANCE LIMITATION CURVES

Test:U:220.1V I:0.2203A P:47.14W PF:0.9724 Lamp Flux:4333.5x1 lm		
NAME: 595X1195MM Cynosis Led Panel	TYPE:	WEIGHT:
SPEC.:4000K	DIM.: 595x1195mm	SERIAL No.:
MFR.:	SUR.:545x1145	Shielding Angle:



LUMINANCE cd/(m2)		
G(DEG)	C0/180	C90/270
85	1481	0
80	1266	0
75	1220	1063
70	1103	1014
65	1151	989
60	1264	979
55	1355	1352
50	1439	1650
45	1824	1904

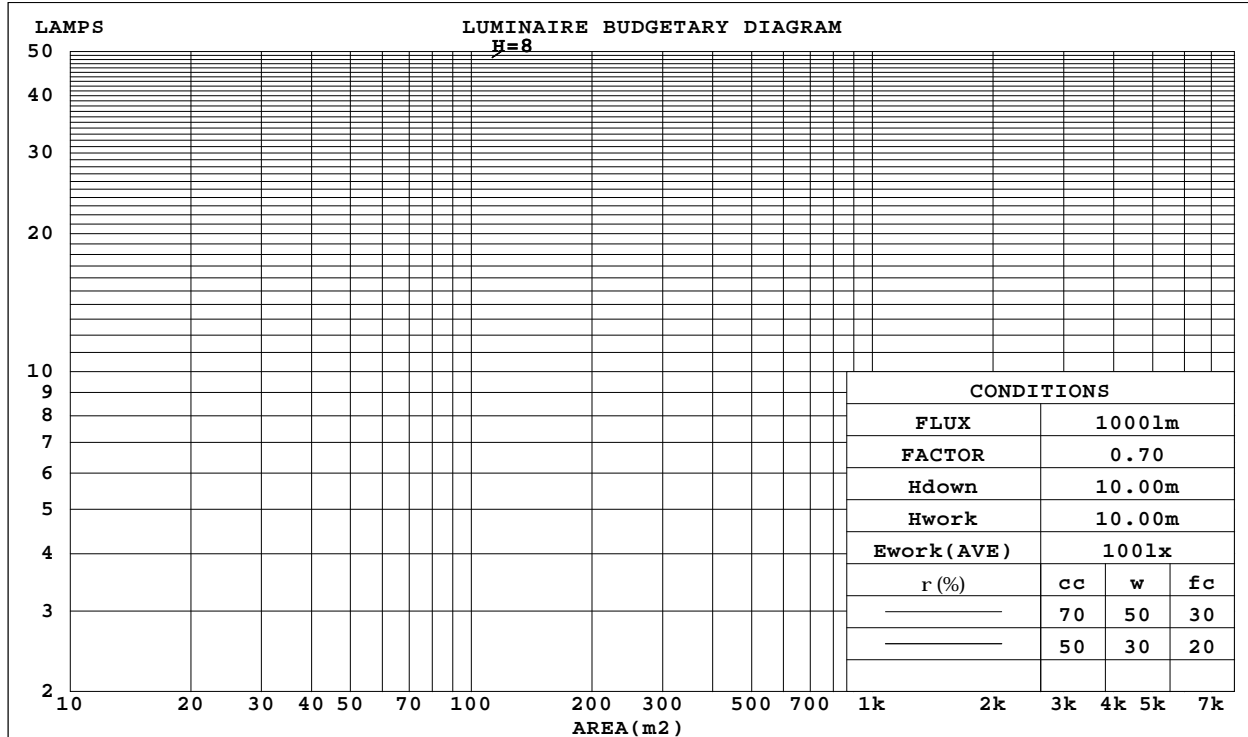
C Range: 0 - 360DEG
 C Interval: 5.0DEG
 Test Speed: HIGH
 Temperature:26.3DEG
 Operators:
 Test Date:2019-04-25

G Range: 0 - 90DEG
 G Interval: 0.5DEG
 Test System:EVERFINE GO-2000B_V1 SYSTEM V2.0.350
 Humidity:65.0%
 Test Distance:10.257m [K=1.0000]
 Remarks:

CU AND LUMINAIRE BUDGETARY ESTIMATE DIAGRAM

Test:U:220.1V I:0.2203A P:47.14W PF:0.9724 Lamp Flux:4333.5x1 lm		
NAME: 595X1195MM Cynosis Led Panel	TYPE:	WEIGHT:
SPEC.:4000K	DIM.: 595x1195mm	SERIAL No.:
MFR.:	SUR.:545x1145	Shielding Angle:

r _{cc}	80%			70%			50%			30%			10%			0
r _w	50%	30%	10%	50%	30%	10%	50%	30%	10%	50%	30%	10%	50%	30%	10%	0
r _{fc}	20%			20%			20%			20%			20%			0
RCR	RCR:Room Cavity Ratio						Coefficients of Utilization(CU)									
0.0	1.19	1.19	1.19	1.16	1.16	1.16	1.11	1.11	1.11	1.06	1.06	1.06	1.02	1.02	1.02	1.00
1.0	1.07	1.03	.00	1.04	1.01	.98	1.00	.97	.95	.96	.94	.92	.93	.91	.89	.87
2.0	.95	.89	.84	.93	.88	.83	.90	.85	.81	.87	.83	.80	.84	.81	.78	.76
3.0	.85	.78	.72	.84	.77	.72	.81	.75	.71	.78	.73	.69	.76	.72	.68	.66
4.0	.77	.69	.63	.76	.68	.63	.73	.67	.62	.71	.65	.61	.69	.64	.60	.58
5.0	.70	.62	.56	.69	.61	.56	.67	.60	.55	.65	.59	.54	.63	.58	.54	.52
6.0	.64	.56	.50	.63	.55	.50	.61	.54	.49	.59	.53	.49	.58	.53	.48	.47
7.0	.58	.50	.45	.58	.50	.45	.56	.49	.44	.55	.49	.44	.53	.48	.44	.42
8.0	.54	.46	.41	.53	.46	.41	.52	.45	.40	.51	.45	.40	.50	.44	.40	.38
9.0	.50	.42	.37	.49	.42	.37	.48	.42	.37	.47	.41	.37	.46	.41	.37	.35
10.0	.46	.39	.34	.46	.39	.34	.45	.38	.34	.44	.38	.34	.43	.38	.34	.32



C Range: 0 - 360DEG
 C Interval: 5.0DEG
 Test Speed: HIGH
 Temperature:26.3DEG
 Operators:
 Test Date:2019-04-25

g Range: 0 - 90DEG
 g Interval: 0.5DEG
 Test System:EVERFINE GO-2000B_V1 SYSTEM V2.0.350
 Humidity:65.0%
 Test Distance:10.257m [K=1.0000]
 Remarks:

WEC AND CCEC

Test:U:220.1V I:0.2203A P:47.14W PF:0.9724 Lamp Flux:4333.5x1 lm		
NAME: 595X1195MM Cynosis Led Panel	TYPE:	WEIGHT:
SPEC.:4000K	DIM.: 595x1195mm	SERIAL No.:
MFR.:	SUR.:545x1145	Shielding Angle:

rcc	80%			70%			50%			30%			10%			0
rw	50%	30%	10%	50%	30%	10%	50%	30%	10%	50%	30%	10%	50%	30%	10%	0
rfc	20%			20%			20%			20%			20%			0
RCR	RCR:Room Cavity Ratio						Wall Exitance Coefficients(WEC)									
0.0																
1.0	.259	.147	.047	.252	.144	.046	.239	.137	.044	.227	.131	.042	.216	.125	.040	
2.0	.248	.136	.042	.242	.133	.041	.231	.128	.040	.221	.124	.039	.211	.119	.038	
3.0	.233	.124	.037	.228	.122	.037	.218	.118	.036	.209	.114	.035	.200	.111	.034	
4.0	.218	.113	.033	.213	.112	.033	.204	.108	.032	.196	.105	.032	.189	.103	.031	
5.0	.204	.104	.030	.199	.102	.030	.192	.100	.029	.185	.097	.029	.178	.095	.029	
6.0	.191	.096	.027	.187	.094	.027	.180	.092	.027	.174	.090	.027	.168	.088	.026	
7.0	.179	.089	.025	.176	.088	.025	.170	.086	.025	.164	.084	.024	.159	.082	.024	
8.0	.169	.082	.023	.166	.082	.023	.160	.080	.023	.155	.079	.023	.150	.077	.022	
9.0	.159	.077	.021	.156	.076	.021	.152	.075	.021	.147	.074	.021	.143	.072	.021	
10.0	.150	.072	.020	.148	.072	.020	.144	.070	.020	.140	.069	.020	.136	.068	.020	

rcc	80%			70%			50%			30%			10%			0
rw	50%	30%	10%	50%	30%	10%	50%	30%	10%	50%	30%	10%	50%	30%	10%	0
rfc	20%			20%			20%			20%			20%			0
RCR	RCR:Room Cavity Ratio						Ceiling Cavity Exitance Coefficients(CCEC)									
0.0	.190	.190	.190	.163	.163	.163	.111	.111	.111	.064	.064	.064	.020	.020	.020	
1.0	.177	.157	.138	.151	.134	.119	.103	.092	.082	.060	.054	.048	.019	.017	.015	
2.0	.166	.132	.103	.143	.114	.089	.098	.079	.062	.056	.046	.037	.018	.015	.012	
3.0	.157	.114	.080	.135	.098	.069	.093	.068	.048	.053	.040	.029	.017	.013	.009	
4.0	.149	.100	.063	.128	.087	.055	.088	.060	.039	.051	.035	.023	.016	.012	.007	
5.0	.142	.090	.051	.122	.077	.044	.084	.054	.031	.048	.032	.019	.016	.010	.006	
6.0	.134	.081	.042	.116	.070	.037	.080	.049	.026	.046	.029	.016	.015	.009	.005	
7.0	.128	.074	.036	.110	.064	.031	.076	.045	.022	.044	.026	.013	.014	.009	.004	
8.0	.122	.068	.031	.105	.059	.027	.073	.041	.019	.042	.024	.011	.014	.008	.004	
9.0	.116	.063	.027	.100	.055	.024	.069	.038	.017	.040	.023	.010	.013	.007	.003	
10.0	.111	.059	.024	.096	.051	.021	.066	.036	.015	.039	.021	.009	.013	.007	.003	

C Range: 0 - 360DEG
 C Interval: 5.0DEG
 Test Speed: HIGH
 Temperature:26.3DEG
 Operators:
 Test Date:2019-04-25

g Range: 0 - 90DEG
 g Interval: 0.5DEG
 Test System:EVERFINE GO-2000B_V1 SYSTEM V2.0.350
 Humidity:65.0%
 Test Distance:10.257m [K=1.0000]
 Remarks:

UGR(Unified Glare Rating) Table

Test:U:220.1V I:0.2203A P:47.14W PF:0.9724 Lamp Flux:4333.5x1 lm										
NAME: 595X1195MM Cynosis Led Panel					TYPE:			WEIGHT:		
SPEC.:4000K					DIM.: 595x1195mm			SERIAL No.:		
MFR.:					SUR.:545x1145			Shielding Angle:		
ceiling/cavity	0.7	0.7	0.5	0.5	0.3	0.7	0.7	0.5	0.5	0.3
walls	0.5	0.3	0.5	0.3	0.3	0.5	0.3	0.5	0.3	0.3
working plane	0.2	0.2	0.2	0.2	0.2	0.2	0.2	0.2	0.2	0.2
Room dimensions	Viewed crosswise					Viewed endwise				
x = 2H y = 2H	12.9	14.2	13.1	14.4	14.6	12.6	14.0	12.9	14.2	14.4
3H	14.0	15.2	14.2	15.4	15.6	13.7	14.9	14.0	15.1	15.4
4H	14.5	15.6	14.8	15.9	16.1	14.2	15.4	14.5	15.6	15.8
6H	14.9	16.0	15.3	16.3	16.6	14.2	15.3	14.5	15.6	15.9
8H	15.1	16.2	15.5	16.5	16.7	14.2	15.2	14.5	15.5	15.8
12H	15.3	16.3	15.7	16.6	16.9	14.1	15.1	14.5	15.4	15.7
4H 2H	13.2	14.3	13.5	14.6	14.8	13.0	14.2	13.3	14.4	14.7
3H	14.5	15.5	14.8	15.8	16.1	14.3	15.3	14.7	15.6	15.9
4H	15.1	16.0	15.5	16.3	16.7	14.9	15.9	15.3	16.2	16.5
6H	15.7	16.5	16.0	16.8	17.2	15.0	15.9	15.4	16.2	16.6
8H	15.9	16.7	16.3	17.0	17.4	15.0	15.7	15.4	16.1	16.5
12H	16.1	16.8	16.6	17.2	17.6	14.9	15.6	15.4	16.0	16.4
8H 4H	15.3	16.1	15.7	16.4	16.8	15.2	15.9	15.6	16.3	16.7
6H	16.0	16.6	16.4	17.0	17.4	15.3	15.9	15.7	16.3	16.7
8H	16.3	16.9	16.8	17.3	17.7	15.3	15.8	15.7	16.2	16.7
12H	16.6	17.1	17.1	17.5	18.0	15.2	15.7	15.7	16.1	16.6
12H 4H	15.3	16.0	15.7	16.4	16.8	15.2	15.9	15.6	16.2	16.6
6H	16.0	16.5	16.4	17.0	17.4	15.3	15.9	15.8	16.3	16.7
8H	16.3	16.8	16.8	17.2	17.7	15.3	15.7	15.7	16.2	16.7
Variations with the observer position at spacings:										
S = 1.0H	+ 0.4 / - 0.5					+ 0.5 / - 0.6				
1.5H	+ 0.3 / - 0.3					+ 0.5 / - 0.4				
2.0H	+ 0.7 / - 1.2					+ 0.7 / - 0.8				

CIE Pub.117 Corrected 4334 lm Total Lamp Luminous Flux.(8log(F/F0) = 5.1)

C Range: 0 - 360DEG
 C Interval: 5.0DEG
 Test Speed: HIGH
 Temperature:26.3DEG
 Operators:
 Test Date:2019-04-25

g Range: 0 - 90DEG
 g Interval: 0.5DEG
 Test System:EVERFINE GO-2000B_V1 SYSTEM V2.0.350
 Humidity:65.0%
 Test Distance:10.257m [K=1.0000]
 Remarks:

UTILIZATION FACTORS TABLE

Test:U:220.1V I:0.2203A P:47.14W PF:0.9724 Lamp Flux:4333.5x1 lm		
NAME: 595X1195MM Cynosis Led Panel	TYPE:	WEIGHT:
SPEC.:4000K	DIM.: 595x1195mm	SERIAL No.:
MFR.:	SUR.:545x1145	Shielding Angle:

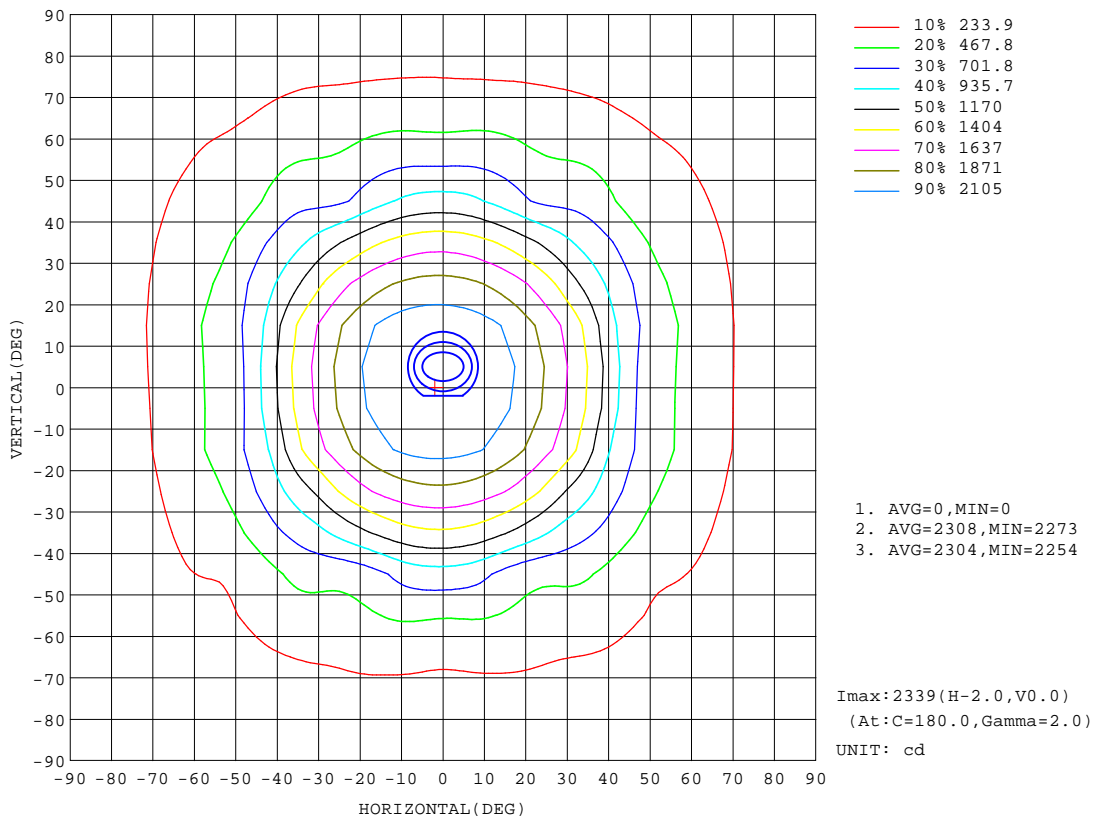
REFLECTANCE										
Ceiling	0.8	0.8	0.8	0.7	0.7	0.7	0.5	0.5	0.5	0
Walls	0.7	0.5	0.3	0.7	0.5	0.3	0.7	0.5	0.3	0
Working plane	0.2	0.2	0.2	0.2	0.2	0.2	0.2	0.2	0.2	0
ROOM INDEX	UTILIZATION FACTORS(PERCENT) $k(RI) \times RCR = 5$									
k = 0.60	67	57	51	66	57	51	65	56	51	45
0.80	76	67	60	75	66	60	74	65	60	54
1.00	84	75	68	83	74	68	81	75	68	62
1.25	90	81	75	89	81	75	86	79	74	68
1.50	94	86	81	93	85	80	90	84	79	73
2.00	100	93	88	98	92	87	95	90	85	78
2.50	103	97	92	101	95	91	98	93	89	82
3.00	106	100	96	104	99	95	100	96	92	85
4.00	109	104	101	107	103	99	103	99	97	88
5.00	111	107	104	109	105	102	104	102	99	91
ROOM INDEX	UF(total)									Direct
According to DIN EN 13032-2 2004			Suspended				SHRNOM = 1.25			

C Range: 0 - 360DEG
 C Interval: 5.0DEG
 Test Speed: HIGH
 Temperature:26.3DEG
 Operators:
 Test Date:2019-04-25

g Range: 0 - 90DEG
 g Interval: 0.5DEG
 Test System:EVERFINE GO-2000B_V1 SYSTEM V2.0.350
 Humidity:65.0%
 Test Distance:10.257m [K=1.0000]
 Remarks:

ISOCANDELA DIAGRAM

Test:U:220.1V I:0.2203A P:47.14W PF:0.9724 Lamp Flux:4333.5x1 lm		
NAME: 595X1195MM Cynosis Led Panel	TYPE:	WEIGHT:
SPEC.:4000K	DIM.: 595x1195mm	SERIAL No.:
MFR.:	SUR.:545x1145	Shielding Angle:



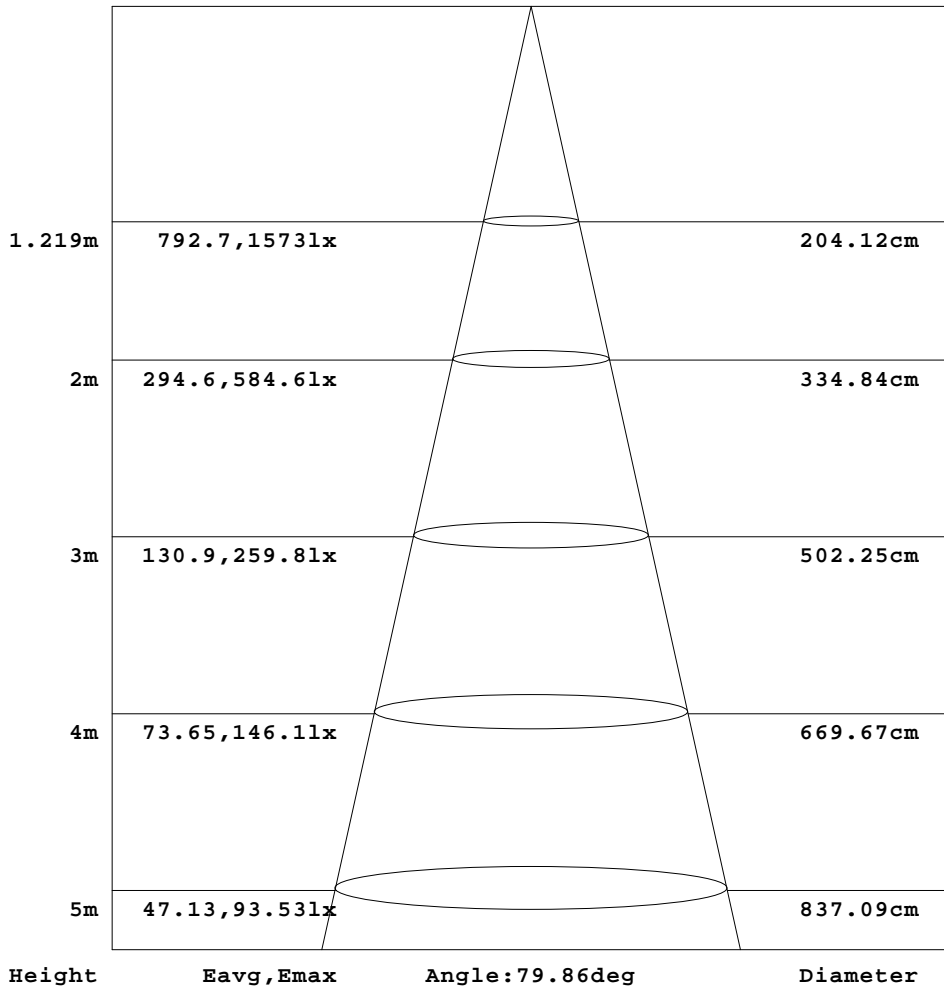
C Range: 0 - 360DEG
 C Interval: 5.0DEG
 Test Speed: HIGH
 Temperature:26.3DEG
 Operators:
 Test Date:2019-04-25

Range: 0 - 90DEG
 Interval: 0.5DEG
 Test System:EVERFINE GO-2000B_V1 SYSTEM V2.0.350
 Humidity:65.0%
 Test Distance:10.257m [K=1.0000]
 Remarks:

AAI Figure

Test:U:220.1V I:0.2203A P:47.14W PF:0.9724 Lamp Flux:4333.5x1 lm		
NAME: 595X1195MM Cynosys Led Panel	TYPE:	WEIGHT:
SPEC.:4000K	DIM.: 595x1195mm	SERIAL No.:
MFR.:	SUR.:545x1145	Shielding Angle:

Flux out:2607 lm



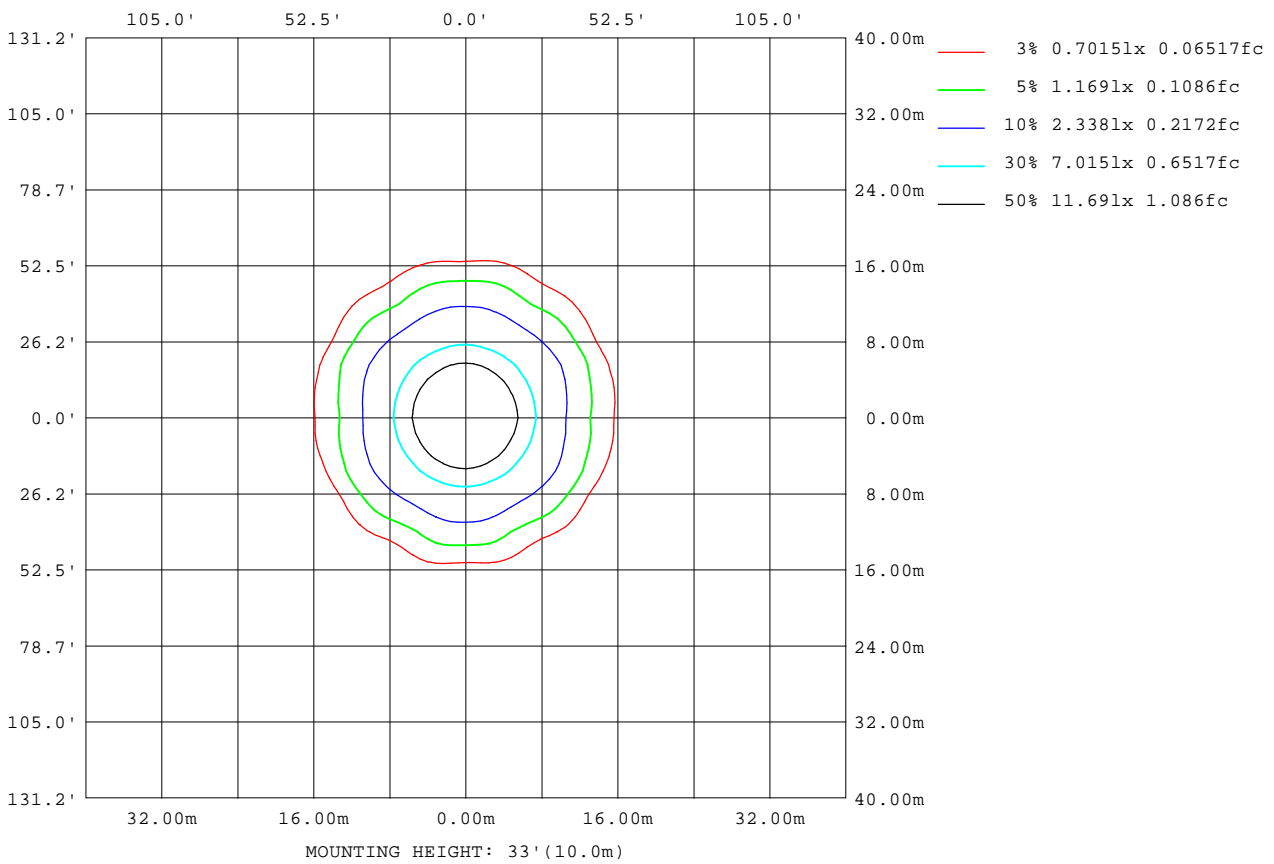
Note:The Curves indicate the illuminated area and the average illumination when the luminaire is at different distance.

C Range: 0 - 360DEG
 C Interval: 5.0DEG
 Test Speed: HIGH
 Temperature:26.3DEG
 Operators:
 Test Date:2019-04-25

Range: 0 - 90DEG
 Interval: 0.5DEG
 Test System:EVERFINE GO-2000B_V1 SYSTEM V2.0.350
 Humidity:65.0%
 Test Distance:10.257m [K=1.0000]
 Remarks:

ISOLUX DIAGRAM

Test:U:220.1V I:0.2203A P:47.14W PF:0.9724 Lamp Flux:4333.5x1 lm		
NAME: 595X1195MM Cynosis Led Panel	TYPE:	WEIGHT:
SPEC.:4000K	DIM.: 595x1195mm	SERIAL No.:
MFR.:	SUR.:545x1145	Shielding Angle:



C Range: 0 - 360DEG
 C Interval: 5.0DEG
 Test Speed: HIGH
 Temperature:26.3DEG
 Operators:
 Test Date:2019-04-25

Range: 0 - 90DEG
 Interval: 0.5DEG
 Test System:EVERFINE GO-2000B_V1 SYSTEM V2.0.350
 Humidity:65.0%
 Test Distance:10.257m [K=1.0000]
 Remarks:

LED Avg.L Report

Test:U:220.1V I:0.2203A P:47.14W PF:0.9724 Lamp Flux:4333.5x1 lm		
NAME: 595X1195MM Cynosis Led Panel	TYPE:	WEIGHT:
SPEC.:4000K	DIM.: 595x1195mm	SERIAL No.:
MFR.:	SUR.:545x1145	Shielding Angle:

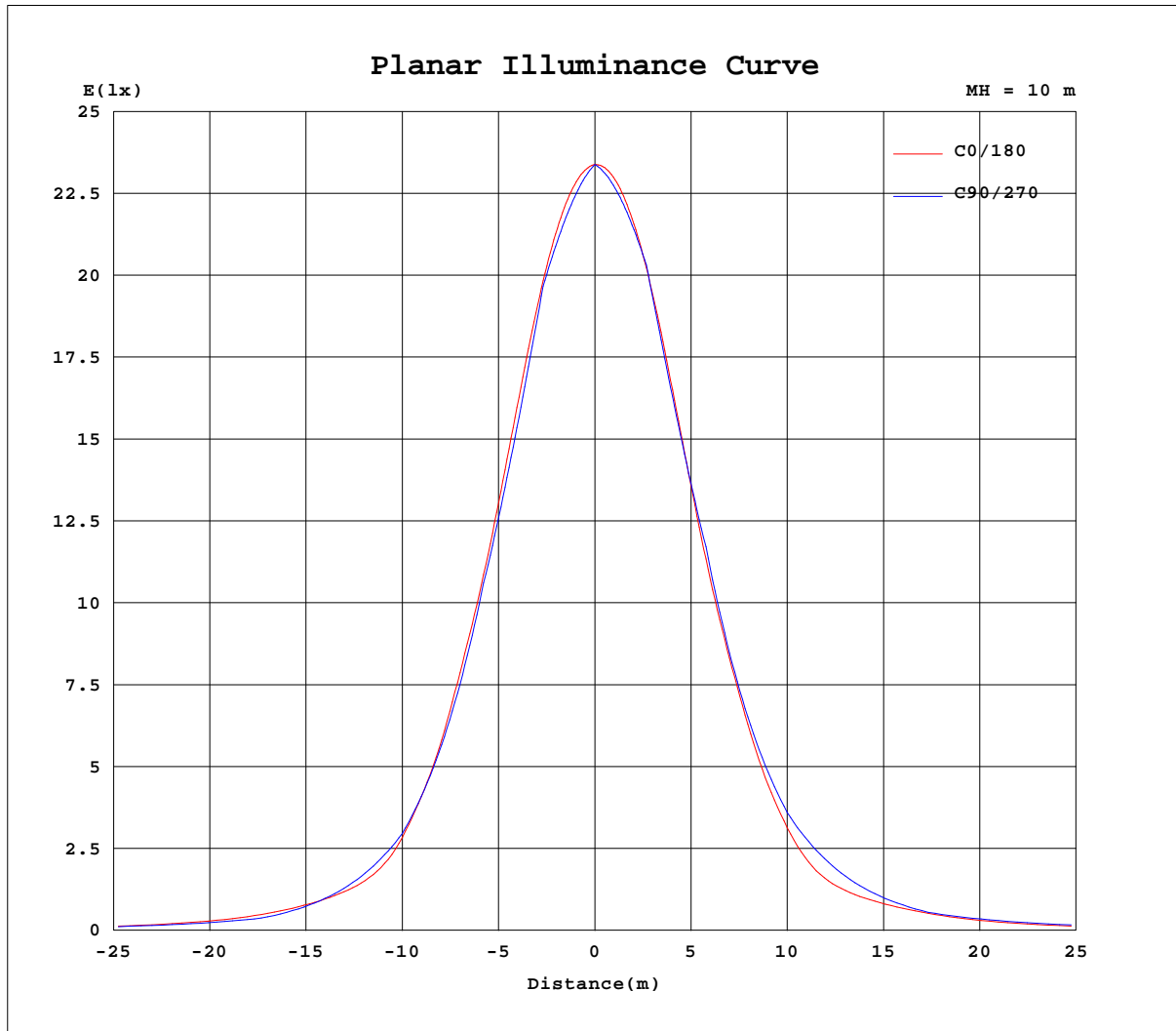
AvgL	cd/m2
L_0~180(65)av	1186
L_0~180(75)av	1249
L_0~180(85)av	1525
L_90~270(65)av	1208
L_90~270(75)av	1242
L_90~270(85)av	0
L_45(65)av	1291
L_45(75)av	1165
L_45(85)av	0

Standard: GB/T 29293-2012

C Range: 0 - 360DEG
 C Interval: 5.0DEG
 Test Speed: HIGH
 Temperature:26.3DEG
 Operators:
 Test Date:2019-04-25

g Range: 0 - 90DEG
 g Interval: 0.5DEG
 Test System:EVERFINE GO-2000B_V1 SYSTEM V2.0.350
 Humidity:65.0%
 Test Distance:10.257m [K=1.0000]
 Remarks:

Planar Illuminance Curve



C Range: 0 - 360DEG
 C Interval: 5.0DEG
 Test Speed: HIGH
 Temperature: 26.3DEG
 Operators:
 Test Date: 2019-04-25

Page Range: 0 - 90DEG
 Interval: 0.5DEG
 Test System: EVERFINE GO-2000B_V1 SYSTEM V2.0.350
 Humidity: 65.0%
 Test Distance: 10.257m [K=1.0000]
 Remarks:

LUMINOUS DISTRIBUTION INTENSITY DATA

Test:U:220.1V I:0.2203A P:47.14W PF:0.9724 Lamp Flux:4333.5x1 lm		
NAME: 595X1195MM Cynosis Led Panel	TYPE:	WEIGHT:
SPEC.:4000K	DIM.: 595x1195mm	SERIAL No.:
MFR.:	SUR.:545x1145	Shielding Angle:

Table--1

UNIT: cd

C(DEG) g (DEG)	0	5	10	15	20	25	30	35	40	45	50	55	60	65	70	75	80	85	90
0	2338	2338	2338	2338	2338	2338	2338	2338	2338	2338	2338	2338	2338	2338	2338	2338	2338	2338	2338
5	2321	2317	2312	2308	2304	2301	2298	2295	2292	2290	2289	2287	2286	2286	2285	2285	2286	2286	2287
10	2279	2269	2260	2252	2245	2240	2235	2232	2229	2227	2227	2227	2228	2228	2229	2230	2232	2234	2235
15	2201	2184	2170	2158	2150	2144	2140	2138	2139	2142	2146	2151	2157	2162	2168	2173	2177	2181	2184
20	2072	2049	2030	2017	2009	2005	2006	2010	2017	2030	2029	2018	2010	2005	2000	1998	1997	1998	2001
25	1889	1862	1843	1833	1829	1831	1839	1851	1834	1822	1813	1809	1805	1805	1806	1808	1811	1814	1817
30	1674	1645	1628	1621	1624	1635	1628	1604	1593	1588	1589	1591	1595	1600	1607	1615	1622	1630	1634
35	1433	1398	1381	1381	1398	1393	1359	1336	1329	1337	1352	1368	1358	1348	1347	1352	1359	1365	1370
40	1119	1084	1068	1074	1093	1098	1091	1073	1057	1063	1068	1060	1048	1042	1051	1071	1087	1098	1105
45	805	797	805	818	828	846	859	851	834	818	802	777	748	735	749	783	815	831	840
50	577	590	616	636	643	664	682	668	655	635	598	538	506	524	567	616	648	658	662
55	485	490	510	498	492	499	489	483	481	476	471	445	428	438	466	491	499	489	484
60	394	397	406	393	381	355	329	310	349	378	382	364	348	357	377	380	357	322	306
65	304	309	312	310	296	269	242	251	275	295	296	281	275	285	300	301	288	269	261
70	235	239	232	226	221	214	211	218	226	226	225	221	220	224	229	228	223	218	216
75	197	180	163	148	150	152	161	164	160	157	156	158	164	168	161	154	156	166	172
80	137	111	101	97.6	94.6	93.9	98.7	101	96.8	79.9	64.6	52.5	42.6	30.8	18.8	10.1	4.62	1.24	0.00
85	80.6	56.7	50.7	45.3	39.7	19.5	0.00	0.00	0.00	0.00	0.00	0.00	0.00	0.00	0.00	0.00	0.00	0.00	0.00
90	36.7	0.00	0.00	0.00	0.00	0.00	0.00	0.00	0.00	0.00	0.00	0.00	0.00	0.00	0.00	0.00	0.00	0.00	0.00

C Range: 0 - 360DEG
 C Interval: 5.0DEG
 Test Speed: HIGH
 Temperature:26.3DEG
 Operators:
 Test Date:2019-04-25

g Range: 0 - 90DEG
 Interval: 0.5DEG
 Test System:EVERFINE GO-2000B_V1 SYSTEM V2.0.350
 Humidity:65.0%
 Test Distance:10.257m [K=1.0000]
 Remarks:

LUMINOUS DISTRIBUTION INTENSITY DATA

Test:U:220.1V I:0.2203A P:47.14W PF:0.9724 Lamp Flux:4333.5x1 lm		
NAME: 595X1195MM Cynosis Led Panel	TYPE:	WEIGHT:
SPEC.:4000K	DIM.: 595x1195mm	SERIAL No.:
MFR.:	SUR.:545x1145	Shielding Angle:

Table--2

UNIT: cd

C(DEG) g (DEG)	95	100	105	110	115	120	125	130	135	140	145	150	155	160	165	170	175	180	185
0	2338	2338	2338	2338	2338	2338	2338	2338	2338	2338	2338	2338	2338	2338	2338	2338	2338	2338	2338
5	2287	2288	2289	2291	2292	2294	2296	2298	2301	2303	2306	2310	2313	2317	2321	2325	2330	2334	2332
10	2236	2238	2239	2240	2241	2243	2244	2246	2249	2252	2256	2260	2265	2272	2279	2287	2296	2306	2301
15	2185	2186	2186	2185	2183	2181	2179	2177	2176	2176	2178	2181	2185	2192	2202	2214	2228	2245	2236
20	2004	2008	2014	2022	2031	2043	2056	2072	2077	2069	2064	2061	2063	2068	2077	2091	2109	2132	2120
25	1821	1824	1827	1830	1836	1843	1851	1863	1876	1894	1916	1904	1898	1897	1903	1915	1934	1961	1947
30	1637	1637	1636	1634	1634	1635	1638	1642	1648	1658	1674	1701	1707	1700	1696	1703	1719	1747	1734
35	1373	1375	1376	1377	1383	1399	1418	1410	1403	1401	1409	1432	1470	1482	1469	1468	1482	1513	1499
40	1108	1106	1097	1085	1079	1089	1108	1126	1132	1123	1135	1161	1186	1202	1182	1170	1181	1216	1202
45	842	835	813	784	771	784	814	847	867	880	895	918	917	904	894	880	876	890	889
50	667	665	641	596	552	529	559	627	673	695	711	729	719	700	691	665	629	608	633
55	495	512	510	486	457	444	463	498	512	520	524	532	542	528	527	538	513	501	519
60	325	364	390	388	369	361	383	408	407	380	337	349	370	395	414	437	428	422	435
65	272	294	309	309	294	287	298	314	313	292	262	242	267	304	325	333	332	322	337
70	220	227	234	238	235	232	236	237	235	232	221	213	216	230	235	240	246	245	260
75	166	159	160	171	179	176	169	165	164	167	171	168	153	151	151	159	181	206	208
80	1.24	4.70	10.5	20.1	33.1	46.0	56.5	68.6	85.6	106	111	108	98.3	92.9	96.7	100	108	146	149
85	0.00	0.00	0.00	0.00	0.00	0.00	0.00	0.00	0.00	0.00	0.00	0.00	24.0	53.4	60.1	63.5	69.4	85.3	95.6
90	0.00	0.00	0.00	0.00	0.00	0.00	0.00	0.00	0.00	0.00	0.00	0.00	0.00	0.00	0.00	0.00	0.00	25.4	0.00

C Range: 0 - 360DEG
 C Interval: 5.0DEG
 Test Speed: HIGH
 Temperature:26.3DEG
 Operators:
 Test Date:2019-04-25

g Range: 0 - 90DEG
 Interval: 0.5DEG
 Test System:EVERFINE GO-2000B_V1 SYSTEM V2.0.350
 Humidity:65.0%
 Test Distance:10.257m [K=1.0000]
 Remarks:

LUMINOUS DISTRIBUTION INTENSITY DATA

Test:U:220.1V I:0.2203A P:47.14W PF:0.9724 Lamp Flux:4333.5x1 lm		
NAME: 595X1195MM Cynosis Led Panel	TYPE:	WEIGHT:
SPEC.:4000K	DIM.: 595x1195mm	SERIAL No.:
MFR.:	SUR.:545x1145	Shielding Angle:

Table--3

UNIT: cd

C(DEG) g (DEG)	190	195	200	205	210	215	220	225	230	235	240	245	250	255	260	265	270	275	280
0	2338	2338	2338	2338	2338	2338	2338	2338	2338	2338	2338	2338	2338	2338	2338	2338	2338	2338	2338
5	2330	2327	2325	2323	2322	2320	2319	2317	2316	2316	2315	2314	2313	2312	2311	2311	2310	2309	2309
10	2296	2293	2290	2287	2286	2285	2285	2285	2284	2284	2285	2285	2285	2285	2284	2283	2282	2280	2278
15	2229	2224	2222	2221	2223	2225	2229	2233	2238	2242	2247	2250	2253	2255	2256	2256	2254	2251	2247
20	2112	2109	2110	2114	2122	2132	2145	2158	2157	2146	2136	2127	2121	2115	2110	2107	2104	2101	2100
25	1941	1943	1950	1964	1983	2005	1990	1980	1972	1966	1963	1961	1959	1959	1958	1957	1954	1949	1945
30	1732	1741	1759	1783	1791	1779	1773	1771	1771	1774	1778	1784	1792	1798	1804	1805	1804	1797	1789
35	1501	1518	1546	1552	1536	1534	1540	1551	1562	1574	1561	1552	1549	1548	1548	1546	1543	1538	1531
40	1212	1243	1277	1269	1262	1266	1288	1307	1290	1273	1264	1264	1270	1278	1283	1284	1282	1277	1265
45	911	949	975	995	1004	1004	1014	1014	994	968	961	970	987	1005	1018	1022	1021	1015	998
50	675	721	756	795	812	804	802	786	741	685	688	738	783	815	830	832	831	830	819
55	548	557	586	625	620	622	630	621	594	567	570	602	634	653	656	645	640	648	653
60	455	451	455	436	425	432	479	504	498	476	467	481	497	499	485	459	449	468	493
65	355	365	350	317	298	325	361	388	392	383	378	385	397	402	397	383	376	387	401
70	275	285	282	268	262	266	275	293	307	310	305	306	313	316	315	308	303	307	313
75	210	208	211	217	225	217	214	221	231	236	233	229	230	231	232	232	230	226	225
80	149	144	145	156	164	162	159	133	107	84.3	61.9	42.1	27.0	15.3	6.90	1.73	0.00	1.69	6.69
85	95.4	96.4	89.3	40.6	0.00	0.00	0.00	0.00	0.00	0.00	0.00	0.00	0.00	0.00	0.00	0.00	0.00	0.00	0.00
90	0.00	0.00	0.00	0.00	0.00	0.00	0.00	0.00	0.00	0.00	0.00	0.00	0.00	0.00	0.00	0.00	0.00	0.00	0.00

C Range: 0 - 360DEG
 C Interval: 5.0DEG
 Test Speed: HIGH
 Temperature:26.3DEG
 Operators:
 Test Date:2019-04-25

g Range: 0 - 90DEG
 Interval: 0.5DEG
 Test System:EVERFINE GO-2000B_V1 SYSTEM V2.0.350
 Humidity:65.0%
 Test Distance:10.257m [K=1.0000]
 Remarks:

LUMINOUS DISTRIBUTION INTENSITY DATA

Test:U:220.1V I:0.2203A P:47.14W PF:0.9724 Lamp Flux:4333.5x1 lm		
NAME: 595X1195MM Cynosis Led Panel	TYPE:	WEIGHT:
SPEC.:4000K	DIM.: 595x1195mm	SERIAL No.:
MFR.:	SUR.:545x1145	Shielding Angle:

Table--4

UNIT: cd

C(DEG) g (DEG)	285	290	295	300	305	310	315	320	325	330	335	340	345	350	355				
0	2338	2338	2338	2338	2338	2338	2338	2338	2338	2338	2338	2338	2338	2338	2338				
5	2308	2308	2307	2307	2307	2307	2307	2308	2309	2310	2311	2313	2315	2317	2319				
10	2276	2274	2272	2271	2267	2265	2263	2261	2261	2261	2262	2263	2265	2269	2274				
15	2242	2238	2229	2222	2214	2206	2198	2191	2185	2181	2178	2179	2180	2185	2192				
20	2100	2099	2100	2102	2106	2112	2108	2091	2076	2064	2055	2049	2047	2050	2059				
25	1939	1933	1928	1923	1921	1919	1922	1927	1935	1911	1893	1879	1870	1868	1875				
30	1776	1762	1749	1736	1725	1716	1709	1705	1706	1714	1707	1681	1664	1657	1660				
35	1523	1516	1514	1518	1525	1505	1484	1467	1456	1458	1473	1464	1433	1417	1416				
40	1249	1234	1222	1219	1225	1234	1235	1211	1194	1190	1186	1175	1139	1112	1106				
45	973	947	927	921	934	956	965	962	962	957	936	908	883	846	817				
50	792	750	701	664	678	730	758	767	771	781	753	713	682	642	602				
55	642	614	577	555	564	587	591	588	580	576	577	547	531	527	499				
60	500	488	465	455	468	482	473	438	386	389	406	429	428	428	408				
65	402	391	373	365	370	377	366	336	301	282	306	338	349	336	319				
70	313	308	298	295	296	293	280	267	258	253	258	264	265	256	244				
75	226	227	225	224	220	216	211	209	213	214	204	197	189	193	194				
80	15.0	26.7	41.5	58.8	77.2	98.3	127	156	160	157	149	142	141	140	140				
85	0.00	0.00	0.00	0.00	0.00	0.00	0.00	0.00	0.00	0.00	38.3	82.4	87.3	85.9	84.6				
90	0.00	0.00	0.00	0.00	0.00	0.00	0.00	0.00	0.00	0.00	0.00	0.00	0.00	0.00	0.00				

C Range: 0 - 360DEG
 C Interval: 5.0DEG
 Test Speed: HIGH
 Temperature:26.3DEG
 Operators:
 Test Date:2019-04-25

g Range: 0 - 90DEG
 Interval: 0.5DEG
 Test System:EVERFINE GO-2000B_V1 SYSTEM V2.0.350
 Humidity:65.0%
 Test Distance:10.257m [K=1.0000]
 Remarks: