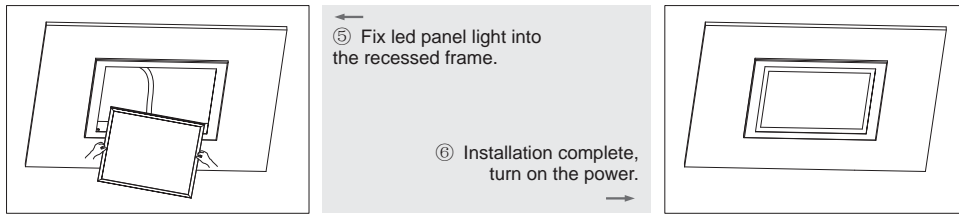
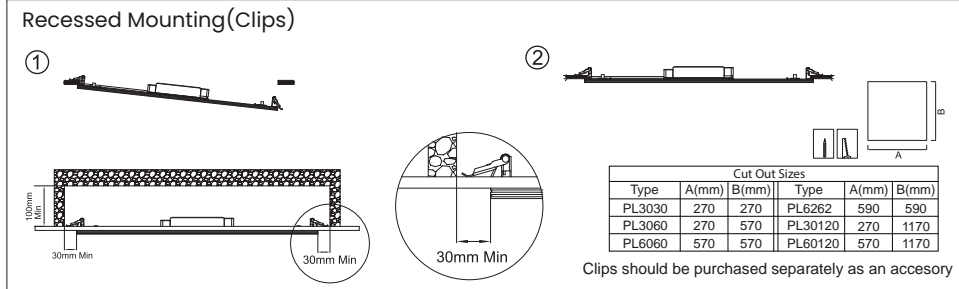
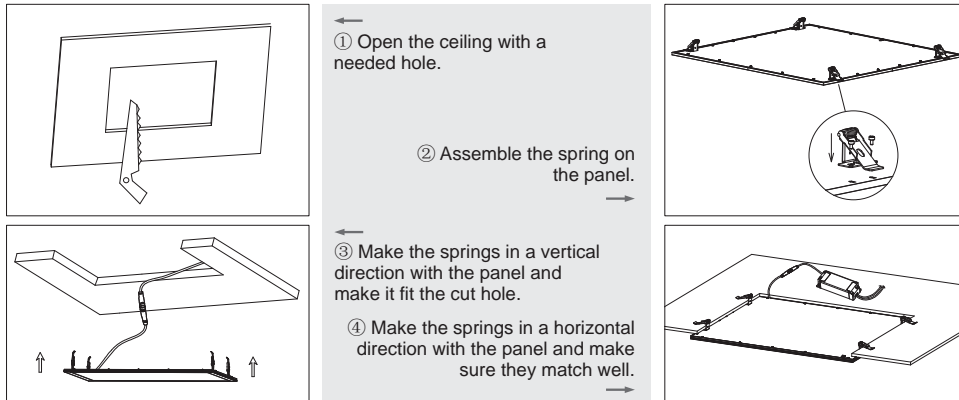


INSTALLATION MANUAL



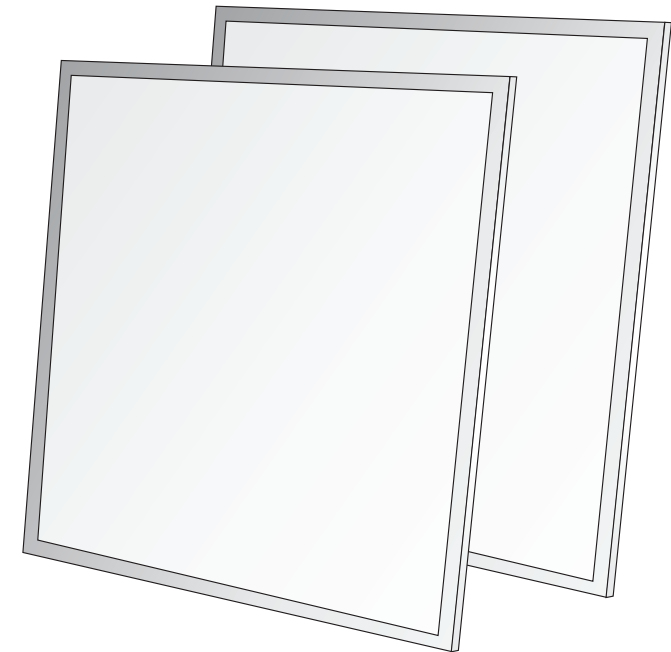
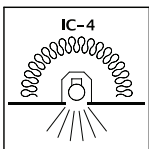
Installation for Plaster Ceilings



Warning:

Input wire diameter $\geq 0.75\text{mm}^2$;
Product modification and improper installation are not valid for warranty!

Note: If the diffused material LGP is constructed from quality PS material, while discolouration of LED panel is easily generated with exposure to sunlight/UV. In general installation area, places without sunlight/UV, PS is strong enough to support. However, sunlight/UV can cause discolouration, under this circumstance, we would recommend the use of LED panel made of PMMA material. Please note warranty does not cover discolouration of diffused material.



LED BACKLIT PANEL

BLP16W-30/60

BLP36W-120/30

BLP45W-120/60

Safety Instructions

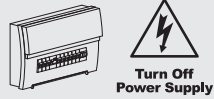
Basic safety precautions should always be followed when installing, including the following:

1. Read instructions carefully before installing.
2. This LED Panel requires professional installation and maintenance.
3. The power supply of the LED Panel should be powered by a dedicated external LED driver.
4. Disconnect the power supply before installing or maintenance.
5. Make sure the wires have been properly connected before powering on the device.
6. Ensure the product has enough space for heat dissipation.
7. Ensure the luminaries are never covered by any heat insulation mat or slim layer material at anytime.
8. Dimmable version could be compatible with a wide range of recommended TRIAC dimmers.
9. IP40 for indoor use only, not for damp location; IP54 for indoor damp location.
10. Ambient Temperature: -10°C to + 45°C, Avoid direct sunlight.
11. Storage Conditions: Cool & dry conditions.

Installation Procedure

WARNING:

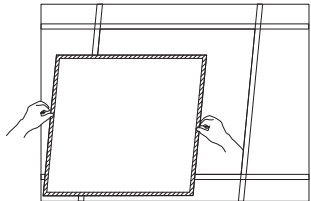
1. Switch off before installation.
2. Switch on only after complete installation and examination of the circuit.



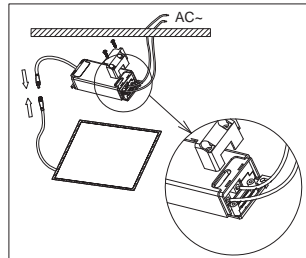
CAUTION:

Make sure that the mounting surface or structural member used for installation can support the weight of LED Panel.

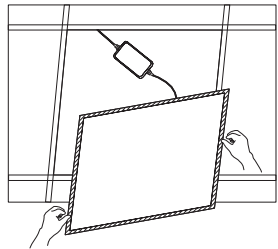
Recessed



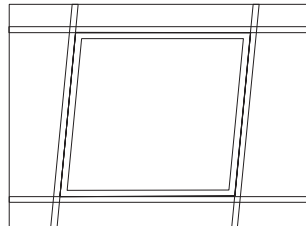
- ① Remove the ceiling plaster slab.



- ② Feed the main AC wire in driver terminal block respectively, connect the panel light and driver.

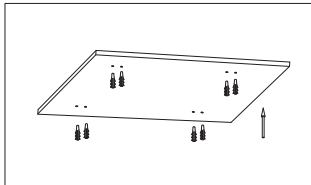


- ③ Fix the panel light into plaster ceiling.

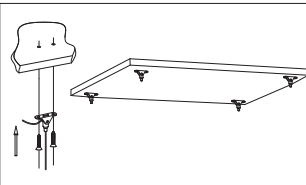


- ④ Make sure the led panel light is firmly fixed, turn on the power.

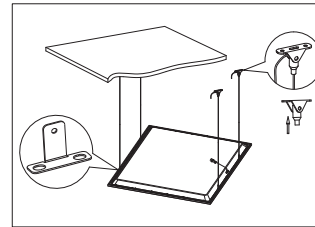
Suspended



- ① Fix the anchor into target place on the ceiling.

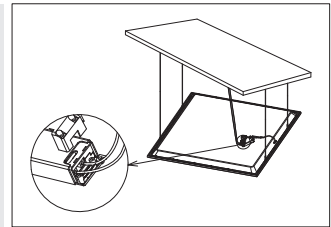


- ② Fix the installation mount on the ceiling with plastic anchor.

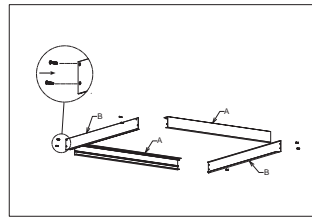


- ③ Hang the panel to ceiling with suspended installation kits, adjust the length of steel wires.

- ④ Feed the main AC wire in driver terminal block respectively, turn on the power.

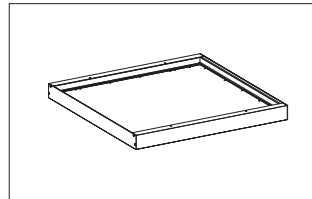
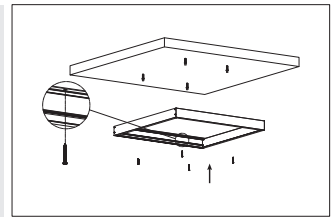


Surface Mounted

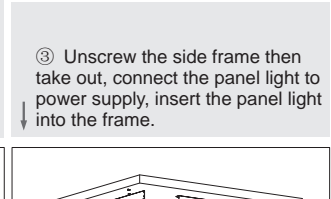


- ① Assemble the surface mounted frame and fix by screws.

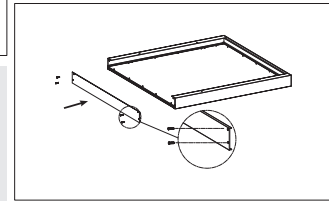
- ② knock the plastic anchor into ceiling, fix the surface mounted frame on the ceiling by screws.



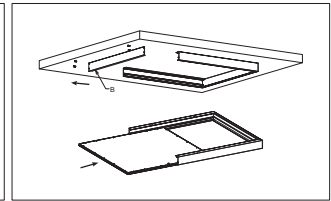
- ④ Fix the side frame back by screw.



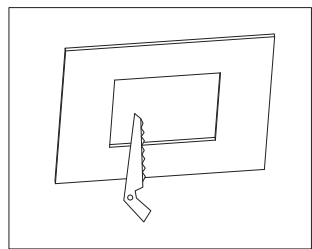
- ③ Unscrew the side frame then take out, connect the panel light to power supply, insert the panel light into the frame.



- ⑤ Make sure the frame and panel light are firmly fixed, turn on the power.

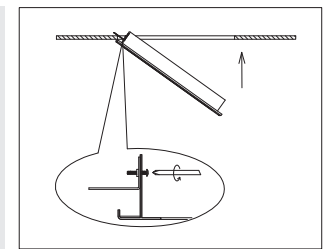


Recessed with Frame

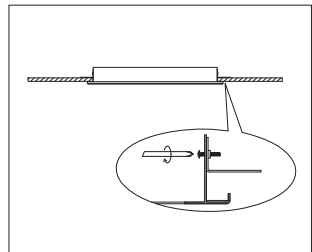


- ① Open a hole on ceiling according to cutout size of recessed frame.

- ② Fix 2pcs of clips to one side of frame by screw, then insert the frame into ceiling.



- ③ Fasten the frame into ceiling by screwing another 2 pcs clips on the other side of frame.



- ④ Feed the main AC wire in terminal block respectively.

