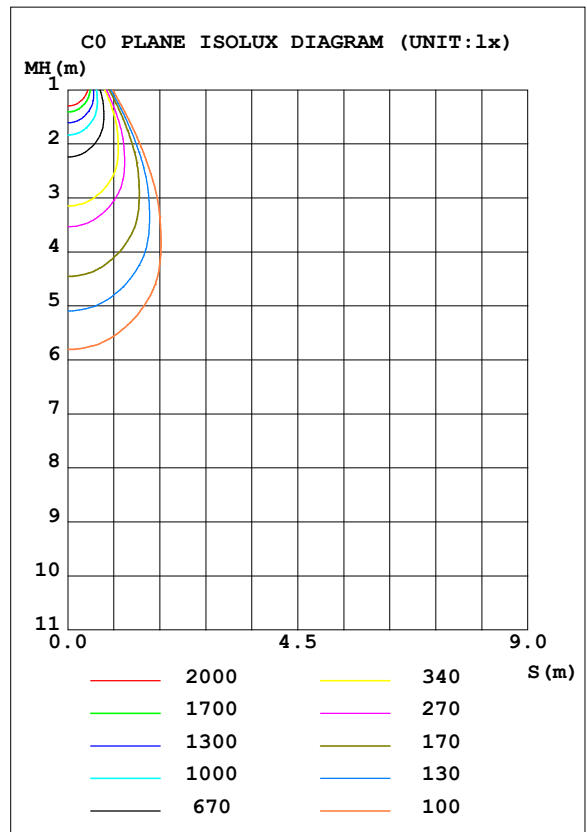
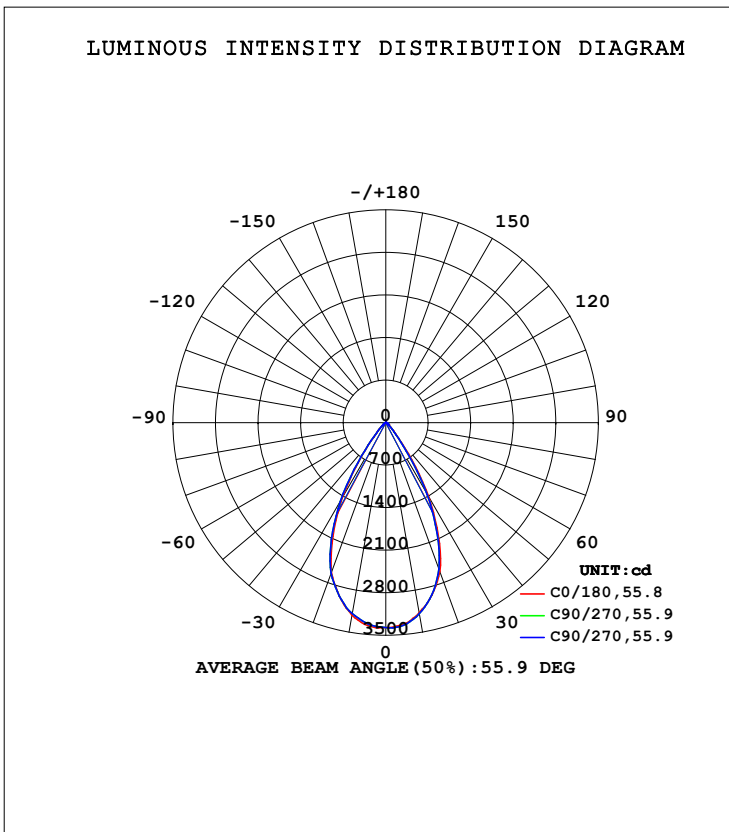


LUMINAIRE PHOTOMETRIC TEST REPORT

| | | |
|---|-------------|------------------|
| Test:U:230.23V I:0.1229A P:27.296W PF:0.9650 Freq:50.08Hz UTHDi:0.25% ITHDi:10.58% KDisp:0.9713 Lamp Flux:2732.44x1 lm | | |
| NAME: TL30W-CC-W 4000K | TYPE: 30W | WEIGHT: |
| SPEC.: 4000K | DIM.: | SERIAL No.: 1 |
| MFR.: | SUR.: 0.007 | Shielding Angle: |

| DATA OF LAMP | | PHOTOMETRIC DATA Eff: 100.10 lm/W | | | |
|-------------------|------------------|-----------------------------------|--------|--|-----------|
| MODEL | TL30W-CC-W 4000K | I _{max} (cd) | 3380 | S/MH (C0/180) | 0.84 |
| NOMINAL POWER (W) | 30 | LOR (%) | 100.0 | S/MH (C90/270) | 0.86 |
| RATED VOLTAGE (V) | 230 | TOTAL FLUX (lm) | 2732.4 | <input type="checkbox"/> UP, DN (C0-180) | 0.0, 49.2 |
| NOMINAL FLUX (lm) | 2732.44 | CIE CLASS | DIRECT | <input type="checkbox"/> UP, DN (C180-360) | 0.0, 50.8 |
| LAMPS INSIDE | 1 | <input type="checkbox"/> up (%) | 0.0 | CIBSE SHR NOM | 0.75 |
| TEST VOLTAGE (V) | 230 | <input type="checkbox"/> down (%) | 100.0 | CIBSE SHR MAX | 0.90 |



C Range: 0 - 360DEG
 C Interval: 90.0DEG
 Test Speed: HIGH
 Temperature: 25.3DEG
 Operators:
 Test Date: 2022-07-14

Range: 0 - 90DEG
 Interval: 1.0DEG
 Test System: EVERFINE GO-2000A_V1 SYSTEM V2.00.446
 Humidity: 65.0%
 Test Distance: 8.690m [K=1.0000]
 Remarks:

ZONAL FLUX DIAGRAM

ZONAL FLUX DIAGRAM:

| mm | C0 | C90 | C180 | C270 | | | | | mm | □ zone | □ total | %lum, lamp |
|-----|-----------------------|--------|--------|--------|--|--|--|--|---------|--------|---------|------------|
| 10 | 3178 | 3189 | 3213 | 3189 | | | | | 0- 10 | 314.0 | 314.0 | 11.5,11.5 |
| 20 | 2602 | 2563 | 2616 | 2638 | | | | | 10- 20 | 821.1 | 1135 | 41.5,41.5 |
| 30 | 1425 | 1364 | 1434 | 1499 | | | | | 20- 30 | 929.7 | 2065 | 75.6,75.6 |
| 40 | 295.5 | 266.8 | 309.8 | 315.4 | | | | | 30- 40 | 483.5 | 2548 | 93.3,93.3 |
| 50 | 71.07 | 66.27 | 71.70 | 72.62 | | | | | 40- 50 | 118.6 | 2667 | 97.6,97.6 |
| 60 | 29.30 | 27.71 | 29.12 | 30.64 | | | | | 50- 60 | 43.97 | 2711 | 99.2,99.2 |
| 70 | 9.388 | 8.074 | 9.378 | 10.58 | | | | | 60- 70 | 18.89 | 2730 | 99.9,99.9 |
| 80 | 0.1647 | 0.1396 | 0.1284 | 0.1768 | | | | | 70- 80 | 2.414 | 2732 | 100,100 |
| 90 | 0.1279 | 0.1280 | 0.1158 | 0.1158 | | | | | 80- 90 | 0.1467 | 2732 | 100,100 |
| 100 | | | | | | | | | 90-100 | | | |
| 110 | | | | | | | | | 100-110 | | | |
| 120 | | | | | | | | | 110-120 | | | |
| 130 | | | | | | | | | 120-130 | | | |
| 140 | | | | | | | | | 130-140 | | | |
| 150 | | | | | | | | | 140-150 | | | |
| 160 | | | | | | | | | 150-160 | | | |
| 170 | | | | | | | | | 160-170 | | | |
| 180 | | | | | | | | | 170-180 | | | |
| DEG | LUMINOUS INTENSITY:cd | | | | | | | | UNIT:lm | | | |

Conical surface Flux(90deg): 2626.3 lm

%lum = 96.1%
 %lamp = 96.1%

Conical surface Flux(120deg): 2711 lm

%lum = 99.2%
 %lamp = 99.2%

0 - 45 DEG Zonal Flux:2626.3 %lum: 96.1%
 0 - 60 DEG Zonal Flux:2711 %lum: 99.2%

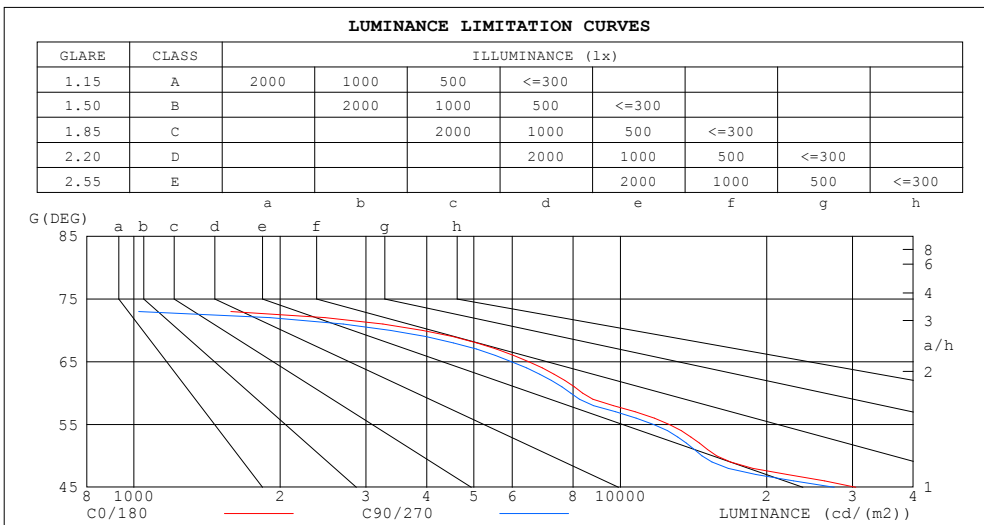
All measured values may vary less than 35 %
 from the average measured value in the 0 to 130 deg. zone: 6.0%
 All measured values in the 0 to 130 deg. zone
 may vary less than 50% from the average value of itself: 9.3%

C Range: 0 - 360DEG
 C Interval: 90.0DEG
 Test Speed: HIGH
 Temperature:25.3DEG
 Operators:
 Test Date:2022-07-14

□ Range: 0 - 90DEG
 □ Interval: 1.0DEG
 Test System:EVERFINE GO-2000A_V1 SYSTEM V2.00.446
 Humidity:65.0%
 Test Distance:8.690m [K=1.0000]
 Remarks:

LUMINANCE LIMITATION CURVES

| | | |
|---|-------------|------------------|
| Test:U:230.23V I:0.1229A P:27.296W PF:0.9650 Freq:50.08Hz UTHDi:0.25% ITHDi:10.58% KDisp:0.9713 Lamp Flux:2732.44x1 lm | | |
| NAME: TL30W-CC-W 4000K | TYPE: 30W | WEIGHT: |
| SPEC.: 4000K | DIM.: | SERIAL No.: 1 |
| MFR.: | SUR.: 0.007 | Shielding Angle: |



| LUMINANCE cd/(m2) | | |
|-------------------|--------|---------|
| G (DEG) | C0/180 | C90/270 |
| 85 | 232 | 215 |
| 80 | 135 | 115 |
| 75 | 150 | 97 |
| 70 | 3922 | 3372 |
| 65 | 6485 | 5978 |
| 60 | 8371 | 7917 |
| 55 | 12622 | 11711 |
| 50 | 15795 | 14727 |
| 45 | 30475 | 27526 |

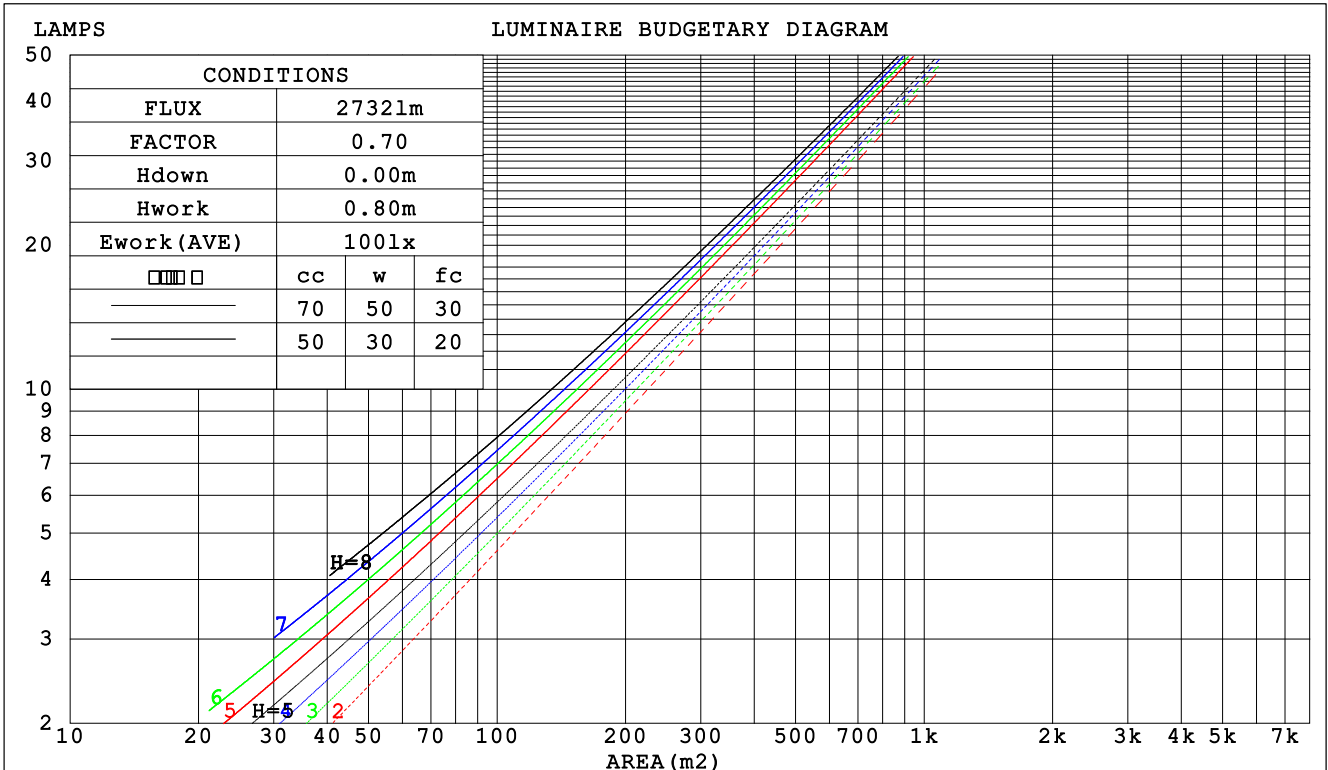
C Range: 0 - 360DEG
 C Interval: 90.0DEG
 Test Speed: HIGH
 Temperature:25.3DEG
 Operators:
 Test Date:2022-07-14

Range: 0 - 90DEG
 Interval: 1.0DEG
 Test System:EVERFINE GO-2000A_V1 SYSTEM V2.00.446
 Humidity:65.0%
 Test Distance:8.690m [K=1.0000]
 Remarks:

CU AND LUMINAIRE BUDGETARY ESTIMATE DIAGRAM

| | | |
|---|-------------|------------------|
| Test:U:230.23V I:0.1229A P:27.296W PF:0.9650 Freq:50.08Hz UTHDi:0.25% ITHDi:10.58% KDisp:0.9713 Lamp Flux:2732.44x1 lm | | |
| NAME: TL30W-CC-W 4000K | TYPE: 30W | WEIGHT: |
| SPEC.: 4000K | DIM.: | SERIAL No.: 1 |
| MFR.: | SUR.: 0.007 | Shielding Angle: |

| □cc | 80% | | | 70% | | | 50% | | | 30% | | | 10% | | | 0 |
|------|-----------------------|------|------|------|------|------|---------------------------------|------|------|------|------|------|------|------|------|------|
| □w | 50% | 30% | 10% | 50% | 30% | 10% | 50% | 30% | 10% | 50% | 30% | 10% | 50% | 30% | 10% | 0 |
| □fc | 20% | | | 20% | | | 20% | | | 20% | | | 20% | | | 0 |
| RCR | RCR:Room Cavity Ratio | | | | | | Coefficients of Utilization(CU) | | | | | | | | | |
| 0.0 | 1.19 | 1.19 | 1.19 | 1.16 | 1.16 | 1.16 | 1.11 | 1.11 | 1.11 | 1.06 | 1.06 | 1.06 | 1.02 | 1.02 | 1.02 | 1.00 |
| 1.0 | 1.11 | 1.08 | 1.06 | 1.09 | 1.07 | 1.05 | 1.05 | 1.03 | 1.01 | 1.01 | .00 | .98 | .98 | .97 | .96 | .94 |
| 2.0 | 1.03 | .99 | .96 | 1.02 | .98 | .95 | .98 | .96 | .93 | .95 | .93 | .91 | .93 | .91 | .89 | .87 |
| 3.0 | .97 | .92 | .88 | .95 | .91 | .87 | .93 | .89 | .86 | .90 | .87 | .84 | .88 | .85 | .83 | .82 |
| 4.0 | .90 | .85 | .81 | .89 | .84 | .80 | .87 | .83 | .80 | .85 | .82 | .79 | .83 | .80 | .78 | .76 |
| 5.0 | .85 | .79 | .75 | .84 | .79 | .75 | .82 | .78 | .74 | .81 | .77 | .73 | .79 | .76 | .73 | .71 |
| 6.0 | .80 | .74 | .70 | .79 | .74 | .70 | .78 | .73 | .69 | .76 | .72 | .69 | .75 | .71 | .68 | .67 |
| 7.0 | .75 | .69 | .65 | .75 | .69 | .65 | .73 | .68 | .65 | .72 | .68 | .65 | .71 | .67 | .64 | .63 |
| 8.0 | .71 | .65 | .61 | .71 | .65 | .61 | .70 | .65 | .61 | .69 | .64 | .61 | .68 | .64 | .60 | .59 |
| 9.0 | .67 | .62 | .58 | .67 | .61 | .58 | .66 | .61 | .57 | .65 | .61 | .57 | .64 | .60 | .57 | .56 |
| 10.0 | .64 | .58 | .55 | .63 | .58 | .54 | .63 | .58 | .54 | .62 | .57 | .54 | .61 | .57 | .54 | .53 |



C Range: 0 - 360DEG
 C Interval: 90.0DEG
 Test Speed: HIGH
 Temperature:25.3DEG
 Operators:
 Test Date:2022-07-14

□ Range: 0 - 90DEG
 □ Interval: 1.0DEG
 Test System:EVERFINE GO-2000A_V1 SYSTEM V2.00.446
 Humidity:65.0%
 Test Distance:8.690m [K=1.0000]
 Remarks:

WEC AND CCEC

| | | |
|---|-------------|------------------|
| Test:U:230.23V I:0.1229A P:27.296W PF:0.9650 Freq:50.08Hz UTHDi:0.25% ITHDi:10.58% KDisp:0.9713 Lamp Flux:2732.44x1 lm | | |
| NAME: TL30W-CC-W 4000K | TYPE: 30W | WEIGHT: |
| SPEC.: 4000K | DIM.: | SERIAL No.: 1 |
| MFR.: | SUR.: 0.007 | Shielding Angle: |

| | | | | | | |
|-----------------------------|-----------------------|----------------|----------------------------------|----------------|----------------|---|
| <input type="checkbox"/> cc | 80% | 70% | 50% | 30% | 10% | 0 |
| <input type="checkbox"/> w | 50% 30% 10% | 50% 30% 10% | 50% 30% 10% | 50% 30% 10% | 50% 30% 10% | 0 |
| <input type="checkbox"/> fc | 20% | 20% | 20% | 20% | 20% | 0 |
| RCR | RCR:Room Cavity Ratio | | Wall Exitance Coefficients (WEC) | | | |
| 0.0 | | | | | | |
| 1.0 | .175 .099 .032 | .168 .096 .030 | .156 .089 .029 | .144 .083 .027 | .133 .077 .025 | |
| 2.0 | .167 .092 .028 | .162 .089 .027 | .151 .084 .026 | .142 .079 .025 | .132 .075 .024 | |
| 3.0 | .159 .085 .025 | .155 .083 .025 | .146 .079 .024 | .137 .075 .023 | .130 .072 .022 | |
| 4.0 | .152 .079 .023 | .148 .077 .023 | .140 .074 .022 | .133 .071 .022 | .126 .068 .021 | |
| 5.0 | .145 .074 .021 | .141 .072 .021 | .134 .070 .021 | .128 .068 .020 | .122 .065 .020 | |
| 6.0 | .138 .069 .020 | .135 .068 .020 | .129 .066 .019 | .123 .064 .019 | .118 .062 .018 | |
| 7.0 | .132 .065 .019 | .129 .064 .018 | .124 .063 .018 | .119 .061 .018 | .114 .059 .017 | |
| 8.0 | .126 .062 .017 | .124 .061 .017 | .119 .060 .017 | .115 .058 .017 | .111 .057 .017 | |
| 9.0 | .121 .059 .016 | .119 .058 .016 | .115 .057 .016 | .111 .056 .016 | .107 .054 .016 | |
| 10.0 | .116 .056 .015 | .114 .055 .015 | .110 .054 .015 | .107 .053 .015 | .103 .052 .015 | |

| | | | | | | |
|-----------------------------|-----------------------|----------------|---|----------------|----------------|---|
| <input type="checkbox"/> cc | 80% | 70% | 50% | 30% | 10% | 0 |
| <input type="checkbox"/> w | 50% 30% 10% | 50% 30% 10% | 50% 30% 10% | 50% 30% 10% | 50% 30% 10% | 0 |
| <input type="checkbox"/> fc | 20% | 20% | 20% | 20% | 20% | 0 |
| RCR | RCR:Room Cavity Ratio | | Ceiling Cavity Exitance Coefficients (CCEC) | | | |
| 0.0 | .190 .190 .190 | .163 .163 .163 | .111 .111 .111 | .064 .064 .064 | .020 .020 .020 | |
| 1.0 | .171 .157 .145 | .146 .135 .125 | .100 .093 .086 | .058 .054 .050 | .018 .017 .016 | |
| 2.0 | .156 .133 .113 | .133 .114 .098 | .091 .079 .068 | .053 .046 .040 | .017 .015 .013 | |
| 3.0 | .143 .114 .090 | .123 .098 .078 | .084 .068 .055 | .049 .040 .032 | .016 .013 .011 | |
| 4.0 | .133 .099 .073 | .114 .085 .063 | .078 .060 .045 | .045 .035 .026 | .015 .011 .009 | |
| 5.0 | .124 .087 .060 | .107 .075 .052 | .073 .053 .037 | .043 .031 .022 | .014 .010 .007 | |
| 6.0 | .117 .078 .050 | .100 .067 .044 | .069 .047 .031 | .040 .028 .018 | .013 .009 .006 | |
| 7.0 | .110 .070 .042 | .095 .061 .037 | .065 .043 .026 | .038 .025 .016 | .012 .008 .005 | |
| 8.0 | .104 .064 .036 | .090 .056 .032 | .062 .039 .022 | .036 .023 .013 | .012 .008 .004 | |
| 9.0 | .099 .059 .031 | .086 .051 .027 | .059 .036 .019 | .035 .021 .012 | .011 .007 .004 | |
| 10.0 | .095 .054 .028 | .082 .047 .024 | .057 .033 .017 | .033 .020 .010 | .011 .006 .003 | |

C Range: 0 - 360DEG
 C Interval: 90.0DEG
 Test Speed: HIGH
 Temperature:25.3DEG
 Operators:
 Test Date:2022-07-14

Range: 0 - 90DEG
 Interval: 1.0DEG
 Test System:EVERFINE GO-2000A_V1 SYSTEM V2.00.446
 Humidity:65.0%
 Test Distance:8.690m [K=1.0000]
 Remarks:

UGR(Unified Glare Rating) Table

| | | |
|---|-------------|------------------|
| Test:U:230.23V I:0.1229A P:27.296W PF:0.9650 Freq:50.08Hz UTHDi:0.25% ITHDi:10.58% KDisp:0.9713 Lamp Flux:2732.44x1 lm | | |
| NAME: TL30W-CC-W 4000K | TYPE: 30W | WEIGHT: |
| SPEC.: 4000K | DIM.: | SERIAL No.: 1 |
| MFR.: | SUR.: 0.007 | Shielding Angle: |

| | | | | | | | | | | |
|---|------------------|------|------|------|------|----------------|------|------|------|------|
| ceiling/cavity | 0.7 | 0.7 | 0.5 | 0.5 | 0.3 | 0.7 | 0.7 | 0.5 | 0.5 | 0.3 |
| walls | 0.5 | 0.3 | 0.5 | 0.3 | 0.3 | 0.5 | 0.3 | 0.5 | 0.3 | 0.3 |
| working plane | 0.2 | 0.2 | 0.2 | 0.2 | 0.2 | 0.2 | 0.2 | 0.2 | 0.2 | 0.2 |
| Room dimensions | Viewed crosswise | | | | | Viewed endwise | | | | |
| x = 2H y = 2H | 16.6 | 17.5 | 16.8 | 17.7 | 17.9 | 16.3 | 17.2 | 16.5 | 17.4 | 17.5 |
| 3H | 16.5 | 17.4 | 16.8 | 17.5 | 17.8 | 16.2 | 17.0 | 16.4 | 17.2 | 17.4 |
| 4H | 16.4 | 17.2 | 16.7 | 17.4 | 17.7 | 16.1 | 16.9 | 16.4 | 17.1 | 17.3 |
| 6H | 16.3 | 17.1 | 16.6 | 17.3 | 17.6 | 16.0 | 16.7 | 16.3 | 17.0 | 17.2 |
| 8H | 16.3 | 17.0 | 16.6 | 17.3 | 17.5 | 15.9 | 16.7 | 16.3 | 16.9 | 17.2 |
| 12H | 16.2 | 16.9 | 16.5 | 17.2 | 17.5 | 15.9 | 16.6 | 16.2 | 16.9 | 17.1 |
| 4H 2H | 16.4 | 17.2 | 16.7 | 17.4 | 17.7 | 16.1 | 16.9 | 16.4 | 17.1 | 17.3 |
| 3H | 16.3 | 17.0 | 16.6 | 17.3 | 17.5 | 16.0 | 16.7 | 16.3 | 16.9 | 17.2 |
| 4H | 16.2 | 16.8 | 16.6 | 17.1 | 17.5 | 15.9 | 16.5 | 16.2 | 16.8 | 17.1 |
| 6H | 16.1 | 16.7 | 16.5 | 17.0 | 17.4 | 15.8 | 16.3 | 16.2 | 16.7 | 17.0 |
| 8H | 16.1 | 16.6 | 16.5 | 16.9 | 17.3 | 15.7 | 16.3 | 16.1 | 16.6 | 17.0 |
| 12H | 16.0 | 16.5 | 16.4 | 16.9 | 17.2 | 15.7 | 16.2 | 16.1 | 16.5 | 16.9 |
| 8H 4H | 16.1 | 16.6 | 16.5 | 16.9 | 17.3 | 15.7 | 16.3 | 16.1 | 16.6 | 17.0 |
| 6H | 16.0 | 16.4 | 16.4 | 16.8 | 17.2 | 15.6 | 16.1 | 16.1 | 16.5 | 16.9 |
| 8H | 15.9 | 16.3 | 16.4 | 16.7 | 17.1 | 15.6 | 16.0 | 16.0 | 16.4 | 16.8 |
| 12H | 15.9 | 16.2 | 16.3 | 16.6 | 17.1 | 15.5 | 15.9 | 16.0 | 16.3 | 16.8 |
| 12H 4H | 16.0 | 16.5 | 16.4 | 16.9 | 17.3 | 15.7 | 16.2 | 16.1 | 16.5 | 16.9 |
| 6H | 15.9 | 16.3 | 16.4 | 16.7 | 17.1 | 15.6 | 16.0 | 16.0 | 16.4 | 16.8 |
| 8H | 15.9 | 16.2 | 16.3 | 16.6 | 17.1 | 15.5 | 15.9 | 16.0 | 16.3 | 16.8 |
| Variations with the observer position at spacings(CIE Pub.117): | | | | | | | | | | |
| S = 1.0H | + 3.4 / - 6.1 | | | | | + 3.1 / - 6.2 | | | | |
| 1.5H | + 5.4 / - 4.5 | | | | | + 5.1 / - 4.3 | | | | |
| 2.0H | + 4.6 / - 3.2 | | | | | + 4.3 / - 3.0 | | | | |

CIE Pub.117, 2732 lm Total Lamp Luminous Flux Correct (8log(F/F0) = 3.5)
Area: 0.007 m2

C Range: 0 - 360DEG
C Interval: 90.0DEG
Test Speed: HIGH
Temperature:25.3DEG
Operators:
Test Date:2022-07-14

Range: 0 - 90DEG
 Interval: 1.0DEG
Test System:EVERFINE GO-2000A_V1 SYSTEM V2.00.446
Humidity:65.0%
Test Distance:8.690m [K=1.0000]
Remarks:

UTILIZATION FACTORS TABLE

| | | |
|---|-------------|------------------|
| Test:U:230.23V I:0.1229A P:27.296W PF:0.9650 Freq:50.08Hz UTHDi:0.25% ITHDi:10.58% KDisp:0.9713 Lamp Flux:2732.44x1 lm | | |
| NAME: TL30W-CC-W 4000K | TYPE: 30W | WEIGHT: |
| SPEC.: 4000K | DIM.: | SERIAL No.: 1 |
| MFR.: | SUR.: 0.007 | Shielding Angle: |

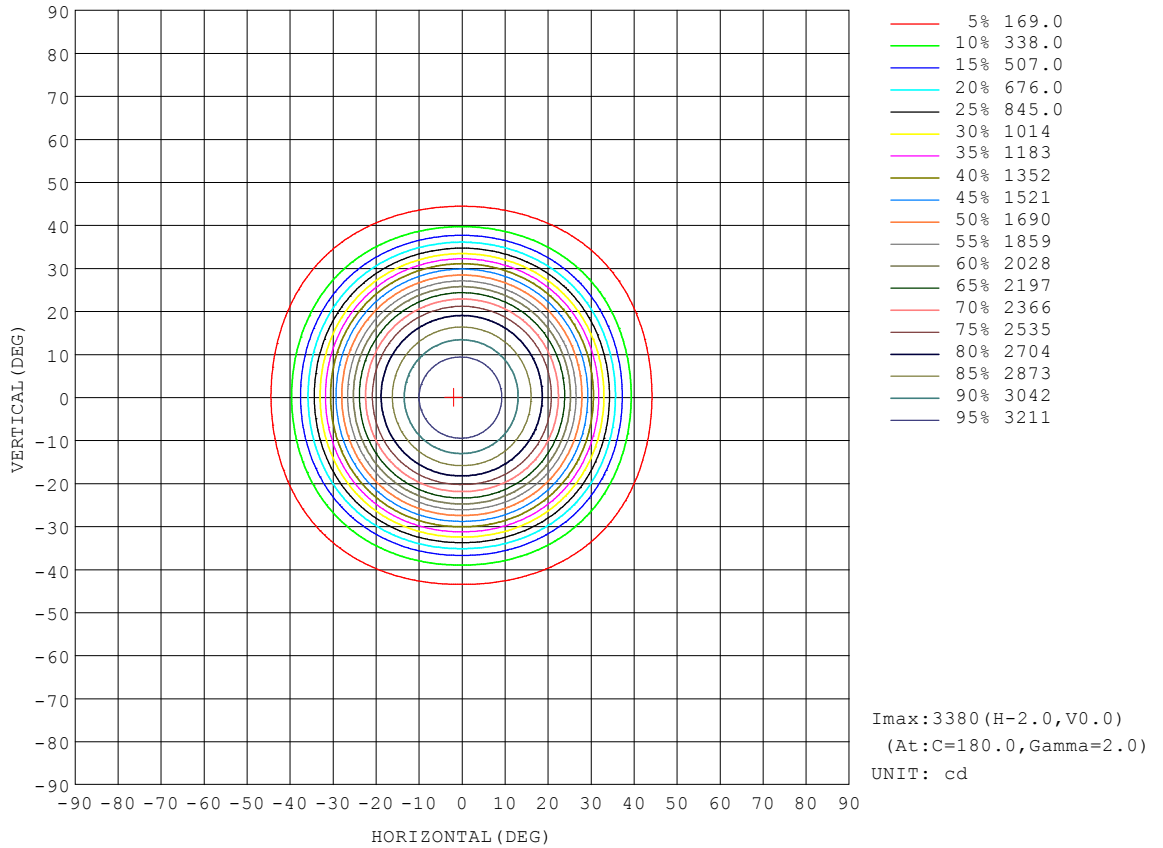
| REFLECTANCE | | | | | | | | | | |
|----------------------------------|--|-----|-----------|-----|-----|-----|---------------|-----|-----|--------|
| Ceiling | 0.8 | 0.8 | 0.8 | 0.7 | 0.7 | 0.7 | 0.5 | 0.5 | 0.5 | 0 |
| Walls | 0.7 | 0.5 | 0.3 | 0.7 | 0.5 | 0.3 | 0.7 | 0.5 | 0.3 | 0 |
| Working plane | 0.2 | 0.2 | 0.2 | 0.2 | 0.2 | 0.2 | 0.2 | 0.2 | 0.2 | 0 |
| ROOM INDEX | UTILIZATION FACTORS (PERCENT) $k(RI) \times RCR = 5$ | | | | | | | | | |
| k = 0.60 | 87 | 81 | 77 | 87 | 81 | 77 | 86 | 80 | 77 | 73 |
| 0.80 | 95 | 89 | 85 | 94 | 89 | 85 | 93 | 88 | 85 | 81 |
| 1.00 | 99 | 94 | 90 | 98 | 93 | 90 | 97 | 93 | 89 | 85 |
| 1.25 | 103 | 98 | 95 | 102 | 98 | 94 | 100 | 96 | 93 | 89 |
| 1.50 | 106 | 101 | 98 | 105 | 101 | 97 | 103 | 99 | 96 | 92 |
| 2.00 | 109 | 105 | 101 | 107 | 103 | 101 | 105 | 101 | 99 | 94 |
| 2.50 | 110 | 107 | 104 | 109 | 105 | 103 | 106 | 103 | 101 | 95 |
| 3.00 | 112 | 108 | 106 | 110 | 107 | 105 | 107 | 104 | 102 | 96 |
| 4.00 | 114 | 111 | 109 | 112 | 109 | 108 | 108 | 106 | 105 | 98 |
| 5.00 | 115 | 113 | 111 | 113 | 111 | 109 | 109 | 108 | 106 | 99 |
| ROOM INDEX | UF(total) | | | | | | | | | Direct |
| According to DIN EN 13032-2 2004 | | | Suspended | | | | SHRNOM = 1.25 | | | |

C Range: 0 - 360DEG
 C Interval: 90.0DEG
 Test Speed: HIGH
 Temperature:25.3DEG
 Operators:
 Test Date:2022-07-14

Range: 0 - 90DEG
 Interval: 1.0DEG
 Test System:EVERFINE GO-2000A_V1 SYSTEM V2.00.446
 Humidity:65.0%
 Test Distance:8.690m [K=1.0000]
 Remarks:

ISOCANDELA DIAGRAM

| | | |
|---|-------------|------------------|
| Test:U:230.23V I:0.1229A P:27.296W PF:0.9650 Freq:50.08Hz UTHDi:0.25% ITHDi:10.58% KDisp:0.9713 Lamp Flux:2732.44x1 lm | | |
| NAME: TL30W-CC-W 4000K | TYPE: 30W | WEIGHT: |
| SPEC.: 4000K | DIM.: | SERIAL No.: 1 |
| MFR.: | SUR.: 0.007 | Shielding Angle: |

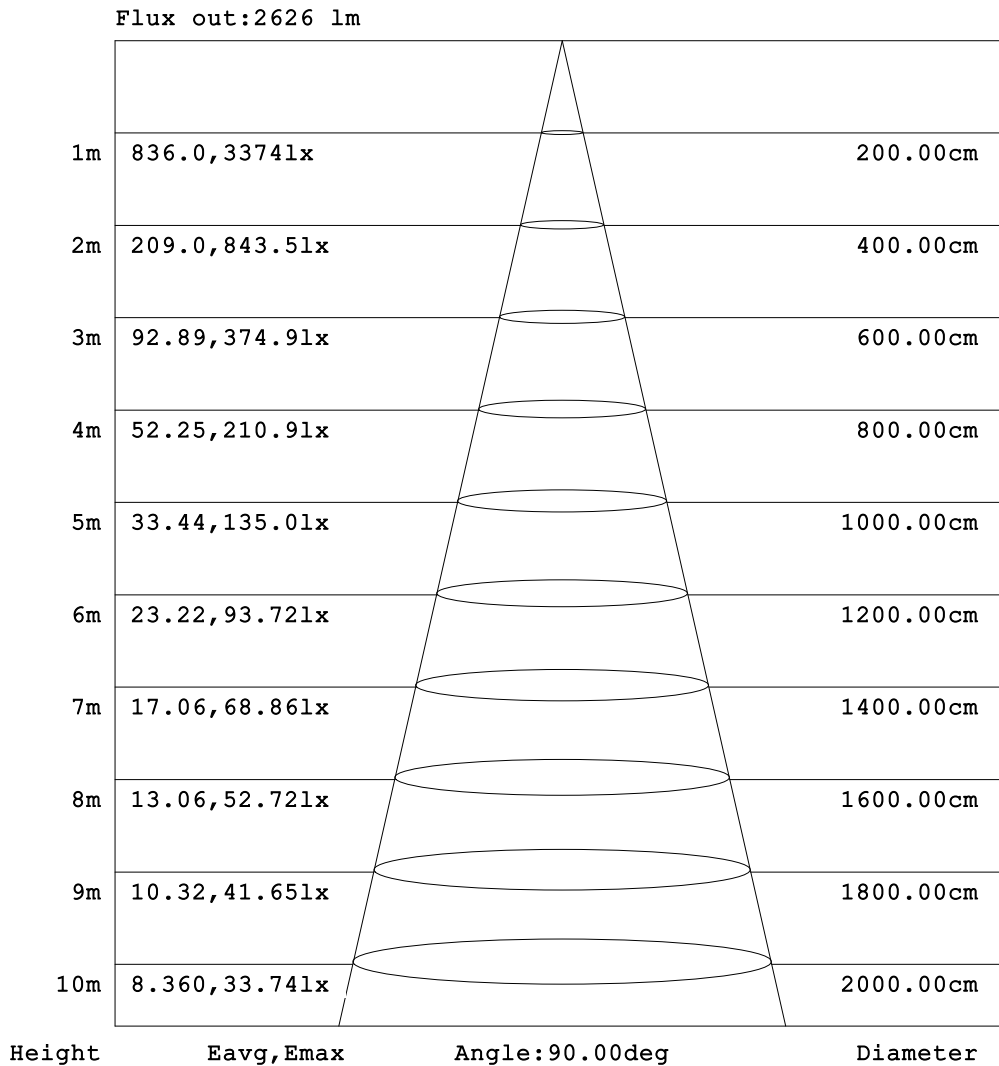


C Range: 0 - 360DEG
 C Interval: 90.0DEG
 Test Speed: HIGH
 Temperature:25.3DEG
 Operators:
 Test Date:2022-07-14

Range: 0 - 90DEG
 Interval: 1.0DEG
 Test System:EVERFINE GO-2000A_V1 SYSTEM V2.00.446
 Humidity:65.0%
 Test Distance:8.690m [K=1.0000]
 Remarks:

AAI Figure

| | | |
|---|-------------|------------------|
| Test:U:230.23V I:0.1229A P:27.296W PF:0.9650 Freq:50.08Hz UTHDi:0.25% ITHDi:10.58% KDisp:0.9713 Lamp Flux:2732.44x1 lm | | |
| NAME: TL30W-CC-W 4000K | TYPE: 30W | WEIGHT: |
| SPEC.: 4000K | DIM.: | SERIAL No.: 1 |
| MFR.: | SUR.: 0.007 | Shielding Angle: |



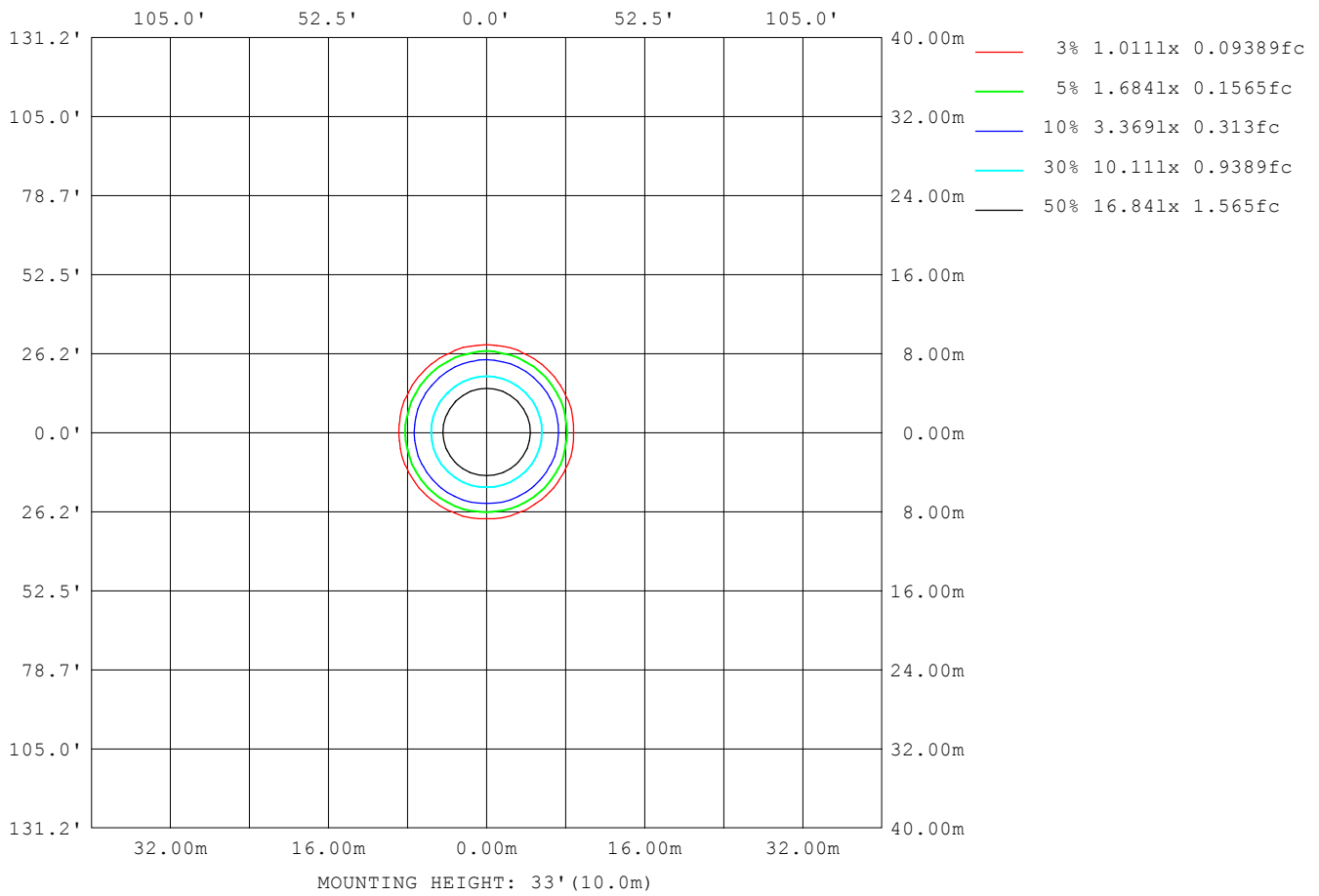
Note:The Curves indicate the illuminated area and the average illumination when the luminaire is at different distance.

C Range: 0 - 360DEG
 C Interval: 90.0DEG
 Test Speed: HIGH
 Temperature:25.3DEG
 Operators:
 Test Date:2022-07-14

Range: 0 - 90DEG
 Interval: 1.0DEG
 Test System:EVERFINE GO-2000A_V1 SYSTEM V2.00.446
 Humidity:65.0%
 Test Distance:8.690m [K=1.0000]
 Remarks:

ISOLUX DIAGRAM

| | | |
|---|-------------|------------------|
| Test:U:230.23V I:0.1229A P:27.296W PF:0.9650 Freq:50.08Hz UTHDi:0.25% ITHDi:10.58% KDisp:0.9713 Lamp Flux:2732.44x1 lm | | |
| NAME: TL30W-CC-W 4000K | TYPE: 30W | WEIGHT: |
| SPEC.: 4000K | DIM.: | SERIAL No.: 1 |
| MFR.: | SUR.: 0.007 | Shielding Angle: |



C Range: 0 - 360DEG
 C Interval: 90.0DEG
 Test Speed: HIGH
 Temperature:25.3DEG
 Operators:
 Test Date:2022-07-14

Range: 0 - 90DEG
 Interval: 1.0DEG
 Test System:EVERFINE GO-2000A_V1 SYSTEM V2.00.446
 Humidity:65.0%
 Test Distance:8.690m [K=1.0000]
 Remarks:

LED Avg.L Report

| | | |
|---|-------------|------------------|
| Test:U:230.23V I:0.1229A P:27.296W PF:0.9650 Freq:50.08Hz UTHDi:0.25% ITHDi:10.58% KDisp:0.9713 Lamp Flux:2732.44x1 lm | | |
| NAME: TL30W-CC-W 4000K | TYPE: 30W | WEIGHT: |
| SPEC.: 4000K | DIM.: | SERIAL No.: 1 |
| MFR.: | SUR.: 0.007 | Shielding Angle: |

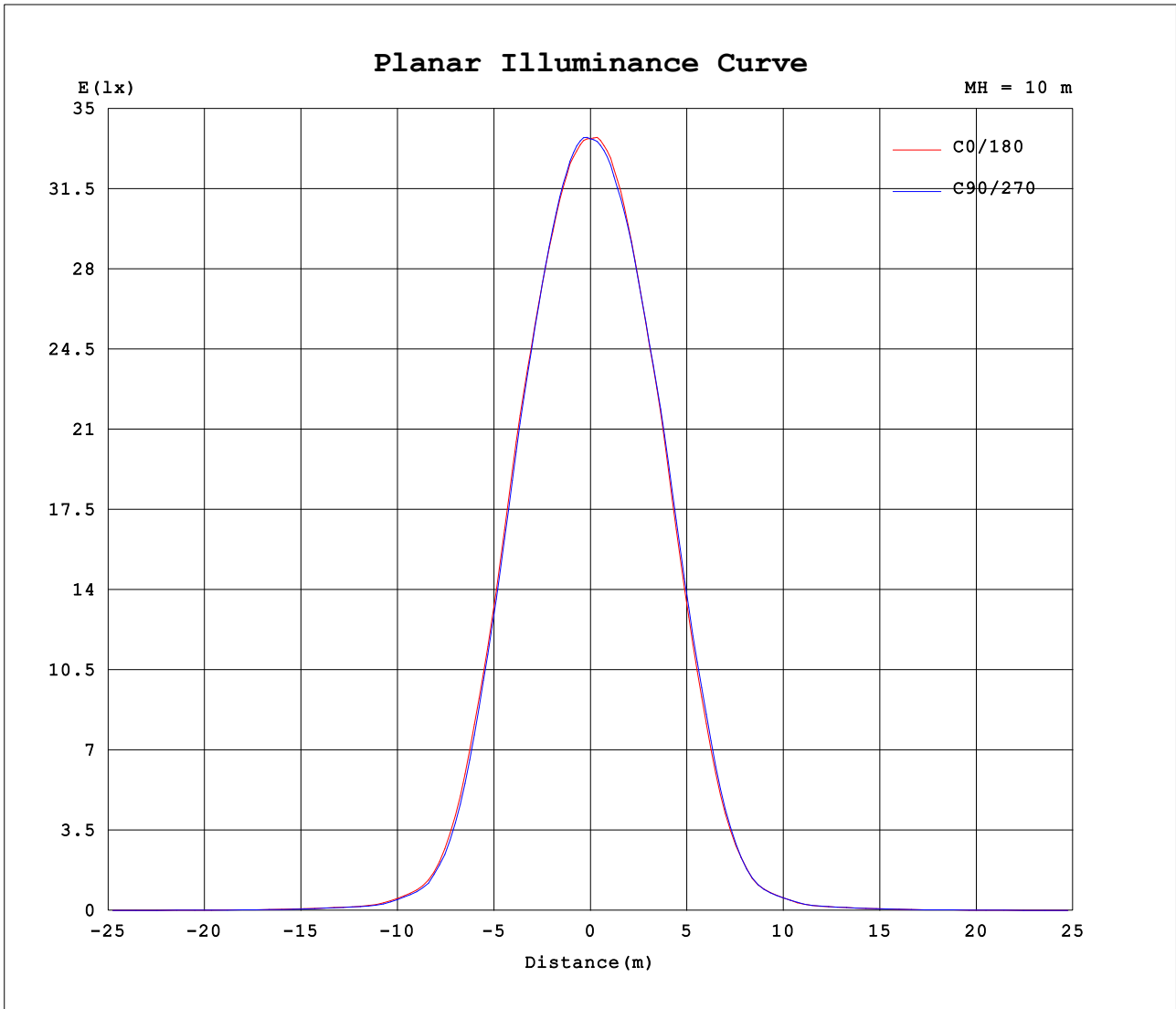
| AvgL | cd/m2 |
|------------------|-------|
| L_0~180 (65) av | 6461 |
| L_0~180 (75) av | 137 |
| L_0~180 (85) av | 214 |
| L_90~270 (65) av | 6435 |
| L_90~270 (75) av | 216 |
| L_90~270 (85) av | 227 |
| L_45 (65) av | 6443 |
| L_45 (75) av | 186 |
| L_45 (85) av | 221 |

Standard: GB/T 29293-2012

C Range: 0 - 360DEG
 C Interval: 90.0DEG
 Test Speed: HIGH
 Temperature:25.3DEG
 Operators:
 Test Date:2022-07-14

Range: 0 - 90DEG
 Interval: 1.0DEG
 Test System:EVERFINE GO-2000A_V1 SYSTEM V2.00.446
 Humidity:65.0%
 Test Distance:8.690m [K=1.0000]
 Remarks:

Planar Illuminance Curve



C Range: 0 - 360DEG
 C Interval: 90.0DEG
 Test Speed: HIGH
 Temperature: 25.3DEG
 Operators:
 Test Date: 2022-07-14

Range: 0 - 90DEG
 Interval: 1.0DEG
 Test System: EVERFINE GO-2000A_V1 SYSTEM V2.00.446
 Humidity: 65.0%
 Test Distance: 8.690m [K=1.0000]
 Remarks:

