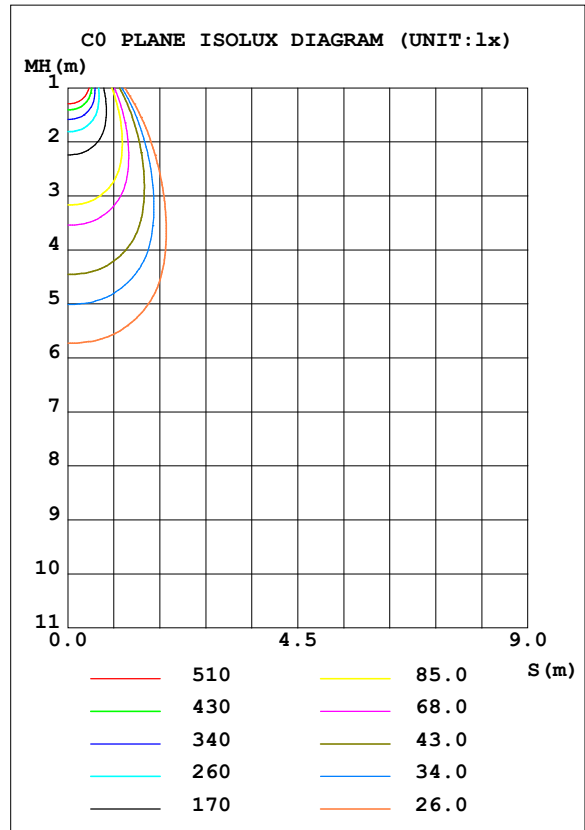
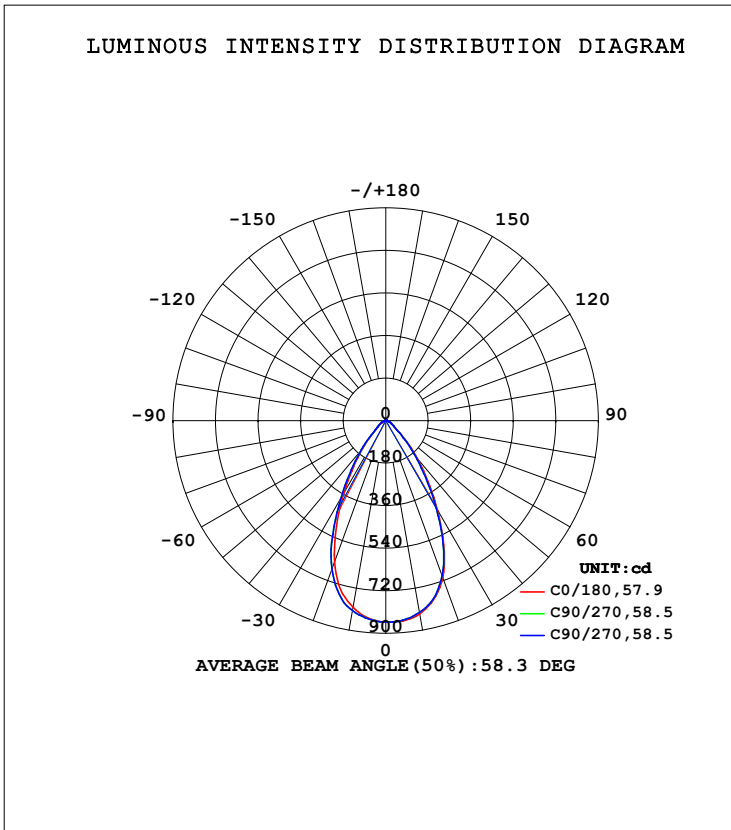


LUMINAIRE PHOTOMETRIC TEST REPORT

Test:U:230.14V I:0.0442A P:8.6957W PF:0.8334 Freq:49.99Hz UTHDi:0.00% ITHDi:0.00% KDisp:0 Lamp Flux:873.729x1 lm		
NAME: CD10W-CC-B 4000K	TYPE: 10W	WEIGHT:
SPEC.: 4000K	DIM.:	SERIAL No.: 1
MFR.:	SUR.: 0.0022	Shielding Angle:

DATA OF LAMP		PHOTOMETRIC DATA Eff: 100.48 lm/W			
MODEL	CD10W-CC-B 4000K	I _{max} (cd)	853.7	S/MH (C0/180)	0.84
NOMINAL POWER (W)	10	LOR (%)	100.0	S/MH (C90/270)	0.87
RATED VOLTAGE (V)	230	TOTAL FLUX (lm)	873.73	<input type="checkbox"/> UP, DN (C0-180)	0.4, 52.8
NOMINAL FLUX (lm)	873.729	CIE CLASS	DIRECT	<input type="checkbox"/> UP, DN (C180-360)	0.4, 46.3
LAMPS INSIDE	1	<input type="checkbox"/> up (%)	0.9	CIBSE SHR NOM	0.75
TEST VOLTAGE (V)	230.4	<input type="checkbox"/> down (%)	99.1	CIBSE SHR MAX	0.90



C Range: 0 - 360DEG
 C Interval: 90.0DEG
 Test Speed: HIGH
 Temperature: 25.3DEG
 Operators:
 Test Date: 2022-01-11

Range: 0 - 180DEG
 Interval: 1.0DEG
 Test System: EVERFINE GO-2000A_V1 SYSTEM V2.00.446
 Humidity: 65.0%
 Test Distance: 8.690m [K=1.0000]
 Remarks:

ZONAL FLUX DIAGRAM

ZONAL FLUX DIAGRAM:

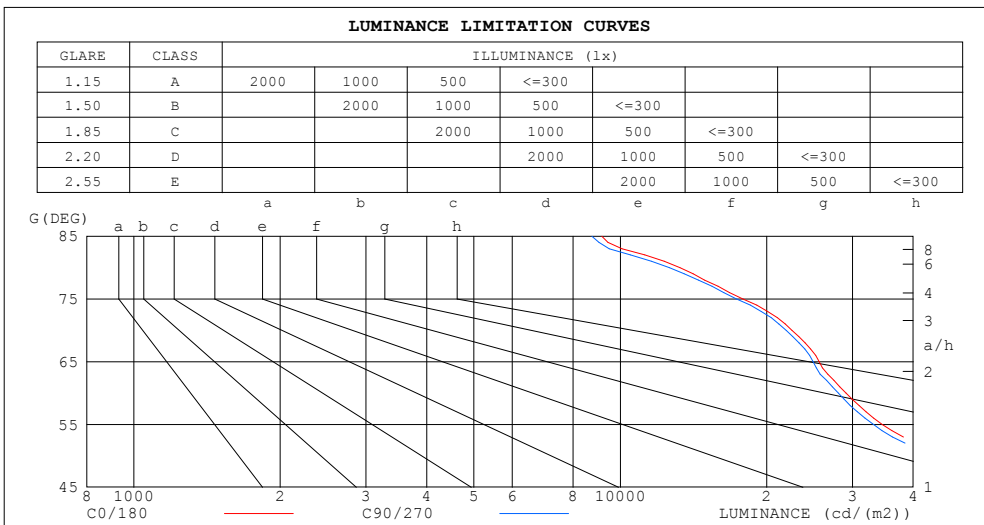
mm	C0	C90	C180	C270					mm	□ zone	□ total	%lum, lamp
10	831.2	823.5	801.7	815.4					0- 10	79.80	79.80	9.13,9.13
20	706.5	697.1	633.1	666.8					10- 20	213.2	293.0	33.5,33.5
30	439.9	428.7	356.0	380.2					20- 30	247.6	540.6	61.9,61.9
40	207.3	194.3	151.1	160.2					30- 40	173.1	713.6	81.7,81.7
50	68.49	63.30	49.50	51.45					40- 50	83.15	796.8	91.2,91.2
60	32.02	30.91	26.36	27.71					50- 60	36.20	833.0	95.3,95.3
70	16.96	16.51	13.16	14.44					60- 70	21.71	854.7	97.8,97.8
80	5.065	4.819	3.298	3.899					70- 80	9.737	864.4	98.9,98.9
90	0.0987	0.0793	0.0793	0.0802					80- 90	1.796	866.2	99.1,99.1
100	0.0974	0.1403	0.1403	0.0974					90-100	0.1040	866.3	99.2,99.2
110	0.2011	0.2930	0.2929	0.2068					100-110	0.1769	866.5	99.2,99.2
120	0.5296	0.6340	0.6405	0.5410					110-120	0.3910	866.9	99.2,99.2
130	1.157	1.293	1.292	1.187					120-130	0.7860	867.7	99.3,99.3
140	2.027	2.172	2.157	2.023					130-140	1.275	869.0	99.5,99.5
150	2.972	3.108	3.041	2.911					140-150	1.598	870.6	99.6,99.6
160	3.752	3.882	3.789	3.660					150-160	1.562	872.1	99.8,99.8
170	4.460	4.515	4.485	4.344					160-170	1.159	873.3	99.9,99.9
180	4.795	4.807	4.789	4.789					170-180	0.4393	873.7	100,100
DEG	LUMINOUS INTENSITY:cd									UNIT:lm		

0 - 45 DEG Zonal Flux:765.18 %lum: 87.6%
 0 - 60 DEG Zonal Flux:832.99 %lum: 95.3%
 All measured values may vary less than 35 %
 from the average measured value in the 0 to 130 deg. zone: 5.9%
 All measured values in the 0 to 130 deg. zone
 may vary less than 50% from the average value of itself: 8.8%

C Range: 0 - 360DEG	□ Range: 0 - 180DEG
C Interval: 90.0DEG	□ Interval: 1.0DEG
Test Speed: HIGH	Test System:EVERFINE GO-2000A_V1 SYSTEM V2.00.446
Temperature:25.3DEG	Humidity:65.0%
Operators:	Test Distance:8.690m [K=1.0000]
Test Date:2022-01-11	Remarks:

LUMINANCE LIMITATION CURVES

Test:U:230.14V I:0.0442A P:8.6957W PF:0.8334 Freq:49.99Hz UTHDi:0.00% ITHDi:0.00% KDisp:0 Lamp Flux:873.729x1 lm		
NAME: CD10W-CC-B 4000K	TYPE: 10W	WEIGHT:
SPEC.: 4000K	DIM.:	SERIAL No.: 1
MFR.:	SUR.: 0.0022	Shielding Angle:



LUMINANCE cd/(m2)		
G (DEG)	C0/180	C90/270
85	9169	8742
80	13258	12615
75	17881	17343
70	22544	21943
65	25633	24931
60	29109	28100
55	34576	33179
50	48438	44760
45	81452	74945

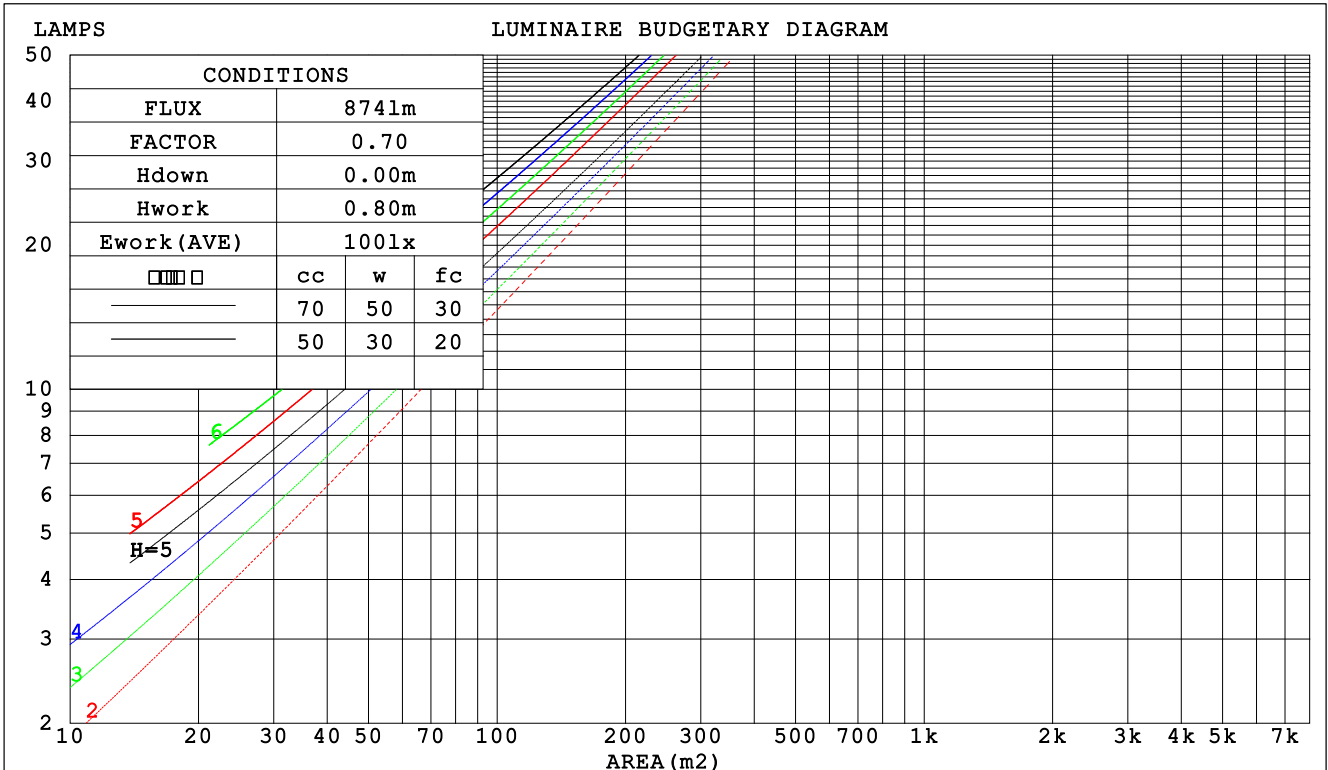
C Range: 0 - 360DEG
 C Interval: 90.0DEG
 Test Speed: HIGH
 Temperature:25.3DEG
 Operators:
 Test Date:2022-01-11

Range: 0 - 180DEG
 Interval: 1.0DEG
 Test System:EVERFINE GO-2000A_V1 SYSTEM V2.00.446
 Humidity:65.0%
 Test Distance:8.690m [K=1.0000]
 Remarks:

CU AND LUMINAIRE BUDGETARY ESTIMATE DIAGRAM

Test:U:230.14V I:0.0442A P:8.6957W PF:0.8334 Freq:49.99Hz UTHDi:0.00% ITHDi:0.00% KDisp:0 Lamp Flux:873.729x1 lm		
NAME: CD10W-CC-B 4000K	TYPE: 10W	WEIGHT:
SPEC.: 4000K	DIM.:	SERIAL No.: 1
MFR.:	SUR.: 0.0022	Shielding Angle:

□cc	80%			70%			50%			30%			10%			0
□w	50%	30%	10%	50%	30%	10%	50%	30%	10%	50%	30%	10%	50%	30%	10%	0
□fc	20%			20%			20%			20%			20%			0
RCR	RCR:Room Cavity Ratio						Coefficients of Utilization(CU)									
0.0	1.19	1.19	1.19	1.16	1.16	1.16	1.11	1.11	1.11	1.06	1.06	1.06	1.01	1.01	1.01	.99
1.0	1.09	1.07	1.04	1.07	1.05	1.02	1.03	1.01	.99	.99	.97	.96	.95	.94	.93	.91
2.0	1.01	.96	.92	.99	.95	.91	.95	.92	.89	.92	.89	.87	.89	.87	.85	.83
3.0	.93	.87	.83	.91	.86	.82	.88	.84	.81	.86	.82	.79	.83	.80	.78	.76
4.0	.86	.80	.75	.85	.79	.75	.82	.77	.74	.80	.76	.73	.78	.75	.72	.70
5.0	.80	.73	.69	.79	.73	.68	.77	.72	.68	.75	.70	.67	.73	.69	.66	.65
6.0	.74	.68	.63	.73	.67	.63	.72	.66	.62	.70	.65	.62	.69	.65	.61	.60
7.0	.69	.63	.58	.69	.63	.58	.67	.62	.58	.66	.61	.57	.65	.60	.57	.55
8.0	.65	.59	.54	.65	.58	.54	.63	.58	.54	.62	.57	.53	.61	.57	.53	.52
9.0	.61	.55	.51	.61	.55	.50	.60	.54	.50	.59	.54	.50	.58	.53	.50	.48
10.0	.58	.51	.47	.57	.51	.47	.56	.51	.47	.55	.50	.47	.55	.50	.47	.45



C Range: 0 - 360DEG
 C Interval: 90.0DEG
 Test Speed: HIGH
 Temperature:25.3DEG
 Operators:
 Test Date:2022-01-11

□ Range: 0 - 180DEG
 □ Interval: 1.0DEG
 Test System:EVERFINE GO-2000A_V1 SYSTEM V2.00.446
 Humidity:65.0%
 Test Distance:8.690m [K=1.0000]
 Remarks:

WEC AND CCEC

Test:U:230.14V I:0.0442A P:8.6957W PF:0.8334 Freq:49.99Hz UTHDi:0.00% ITHDi:0.00% KDisp:0 Lamp Flux:873.729x1 lm		
NAME: CD10W-CC-B 4000K	TYPE: 10W	WEIGHT:
SPEC.: 4000K	DIM.:	SERIAL No.: 1
MFR.:	SUR.: 0.0022	Shielding Angle:

<input type="checkbox"/> cc	80%	70%	50%	30%	10%	0
<input type="checkbox"/> w	50% 30% 10%	50% 30% 10%	50% 30% 10%	50% 30% 10%	50% 30% 10%	0
<input type="checkbox"/> fc	20%	20%	20%	20%	20%	0
RCR	RCR:Room Cavity Ratio		Wall Exitance Coefficients (WEC)			
0.0						
1.0	.201 .114 .036	.194 .110 .035	.180 .104 .033	.168 .097 .031	.157 .091 .029	
2.0	.193 .106 .032	.187 .103 .032	.175 .097 .030	.165 .093 .029	.155 .088 .028	
3.0	.183 .097 .029	.178 .095 .029	.168 .091 .028	.159 .087 .027	.150 .083 .026	
4.0	.173 .090 .026	.168 .088 .026	.160 .085 .025	.152 .082 .025	.145 .079 .024	
5.0	.164 .083 .024	.160 .082 .024	.152 .079 .023	.146 .077 .023	.139 .074 .022	
6.0	.155 .078 .022	.152 .077 .022	.145 .074 .022	.139 .072 .021	.133 .070 .021	
7.0	.148 .073 .021	.145 .072 .021	.139 .070 .020	.133 .068 .020	.128 .067 .020	
8.0	.141 .069 .019	.138 .068 .019	.132 .066 .019	.128 .065 .019	.123 .063 .018	
9.0	.134 .065 .018	.131 .064 .018	.127 .063 .018	.122 .061 .018	.118 .060 .017	
10.0	.128 .061 .017	.126 .061 .017	.121 .059 .017	.117 .058 .017	.113 .057 .016	

<input type="checkbox"/> cc	80%	70%	50%	30%	10%	0
<input type="checkbox"/> w	50% 30% 10%	50% 30% 10%	50% 30% 10%	50% 30% 10%	50% 30% 10%	0
<input type="checkbox"/> fc	20%	20%	20%	20%	20%	0
RCR	RCR:Room Cavity Ratio		Ceiling Cavity Exitance Coefficients (CCEC)			
0.0	.197 .197 .197	.168 .168 .168	.115 .115 .115	.066 .066 .066	.021 .021 .021	
1.0	.179 .164 .150	.153 .140 .129	.105 .097 .089	.060 .056 .052	.019 .018 .017	
2.0	.166 .139 .117	.142 .120 .101	.097 .083 .070	.056 .048 .041	.018 .016 .013	
3.0	.154 .120 .093	.132 .104 .081	.091 .072 .057	.052 .042 .033	.017 .014 .011	
4.0	.145 .106 .076	.124 .092 .066	.085 .064 .047	.049 .037 .028	.016 .012 .009	
5.0	.137 .095 .064	.117 .082 .055	.081 .057 .039	.047 .034 .023	.015 .011 .008	
6.0	.129 .086 .054	.111 .074 .047	.077 .052 .033	.044 .031 .020	.014 .010 .007	
7.0	.123 .078 .047	.106 .068 .041	.073 .048 .029	.042 .028 .017	.014 .009 .006	
8.0	.117 .072 .041	.101 .063 .036	.070 .044 .026	.041 .026 .015	.013 .008 .005	
9.0	.112 .067 .037	.096 .058 .032	.067 .041 .023	.039 .024 .014	.013 .008 .004	
10.0	.107 .063 .033	.092 .054 .029	.064 .038 .021	.037 .023 .012	.012 .007 .004	

C Range: 0 - 360DEG
 C Interval: 90.0DEG
 Test Speed: HIGH
 Temperature:25.3DEG
 Operators:
 Test Date:2022-01-11

Range: 0 - 180DEG
 Interval: 1.0DEG
 Test System:EVERFINE GO-2000A_V1 SYSTEM V2.00.446
 Humidity:65.0%
 Test Distance:8.690m [K=1.0000]
 Remarks:

UGR(Unified Glare Rating) Table

Test:U:230.14V I:0.0442A P:8.6957W PF:0.8334 Freq:49.99Hz UTHDi:0.00% ITHDi:0.00% KDisp:0 Lamp Flux:873.729x1 lm		
NAME: CD10W-CC-B 4000K	TYPE: 10W	WEIGHT:
SPEC.: 4000K	DIM.:	SERIAL No.: 1
MFR.:	SUR.: 0.0022	Shielding Angle:

ceiling/cavity	0.7	0.7	0.5	0.5	0.3	0.7	0.7	0.5	0.5	0.3
walls	0.5	0.3	0.5	0.3	0.3	0.5	0.3	0.5	0.3	0.3
working plane	0.2	0.2	0.2	0.2	0.2	0.2	0.2	0.2	0.2	0.2
Room dimensions	Viewed crosswise					Viewed endwise				
x = 2H y = 2H	24.5	25.5	24.7	25.7	25.9	24.2	25.3	24.5	25.5	25.7
3H	24.8	25.7	25.0	25.9	26.2	24.6	25.5	24.8	25.7	26.0
4H	24.9	25.8	25.1	26.0	26.3	24.6	25.6	24.9	25.8	26.1
6H	24.9	25.7	25.2	26.0	26.3	24.7	25.5	25.0	25.8	26.1
8H	24.9	25.7	25.2	26.0	26.2	24.7	25.5	25.0	25.8	26.0
12H	24.8	25.6	25.2	25.9	26.2	24.6	25.4	25.0	25.7	26.0
4H 2H	24.5	25.4	24.8	25.6	25.9	24.3	25.2	24.6	25.4	25.7
3H	24.9	25.7	25.2	26.0	26.3	24.7	25.5	25.0	25.8	26.1
4H	25.1	25.8	25.4	26.1	26.4	24.9	25.6	25.2	25.9	26.2
6H	25.1	25.8	25.5	26.1	26.5	24.9	25.6	25.3	25.9	26.3
8H	25.1	25.7	25.5	26.1	26.5	24.9	25.5	25.4	25.9	26.3
12H	25.1	25.6	25.5	26.0	26.4	24.9	25.5	25.3	25.8	26.3
8H 4H	25.0	25.6	25.5	26.0	26.4	24.9	25.5	25.3	25.8	26.2
6H	25.2	25.6	25.6	26.1	26.5	25.0	25.5	25.4	25.9	26.3
8H	25.2	25.6	25.6	26.0	26.5	25.0	25.4	25.5	25.9	26.3
12H	25.2	25.5	25.7	26.0	26.5	25.0	25.4	25.5	25.8	26.3
12H 4H	25.0	25.5	25.4	25.9	26.3	24.8	25.4	25.3	25.8	26.2
6H	25.1	25.6	25.6	26.0	26.5	25.0	25.4	25.4	25.8	26.3
8H	25.2	25.5	25.6	26.0	26.5	25.0	25.3	25.5	25.8	26.3
Variations with the observer position at spacings(CIE Pub.117):										
S = 1.0H	+ 1.4 / - 2.2					+ 1.3 / - 2.1				
1.5H	+ 2.5 / - 2.0					+ 2.4 / - 1.9				
2.0H	+ 3.0 / - 1.4					+ 2.7 / - 1.3				

CIE Pub.117, 873.7 lm Total Lamp Luminous Flux Correct (8log(F/F0) = -0.5)
Area: 0.0022 m2

C Range: 0 - 360DEG
C Interval: 90.0DEG
Test Speed: HIGH
Temperature:25.3DEG
Operators:
Test Date:2022-01-11

Range: 0 - 180DEG
 Interval: 1.0DEG
Test System:EVERFINE GO-2000A_V1 SYSTEM V2.00.446
Humidity:65.0%
Test Distance:8.690m [K=1.0000]
Remarks:

UTILIZATION FACTORS TABLE

Test:U:230.14V I:0.0442A P:8.6957W PF:0.8334 Freq:49.99Hz UTHDi:0.00% ITHDi:0.00% KDisp:0 Lamp Flux:873.729x1 lm		
NAME: CD10W-CC-B 4000K	TYPE: 10W	WEIGHT:
SPEC.: 4000K	DIM.:	SERIAL No.: 1
MFR.:	SUR.: 0.0022	Shielding Angle:

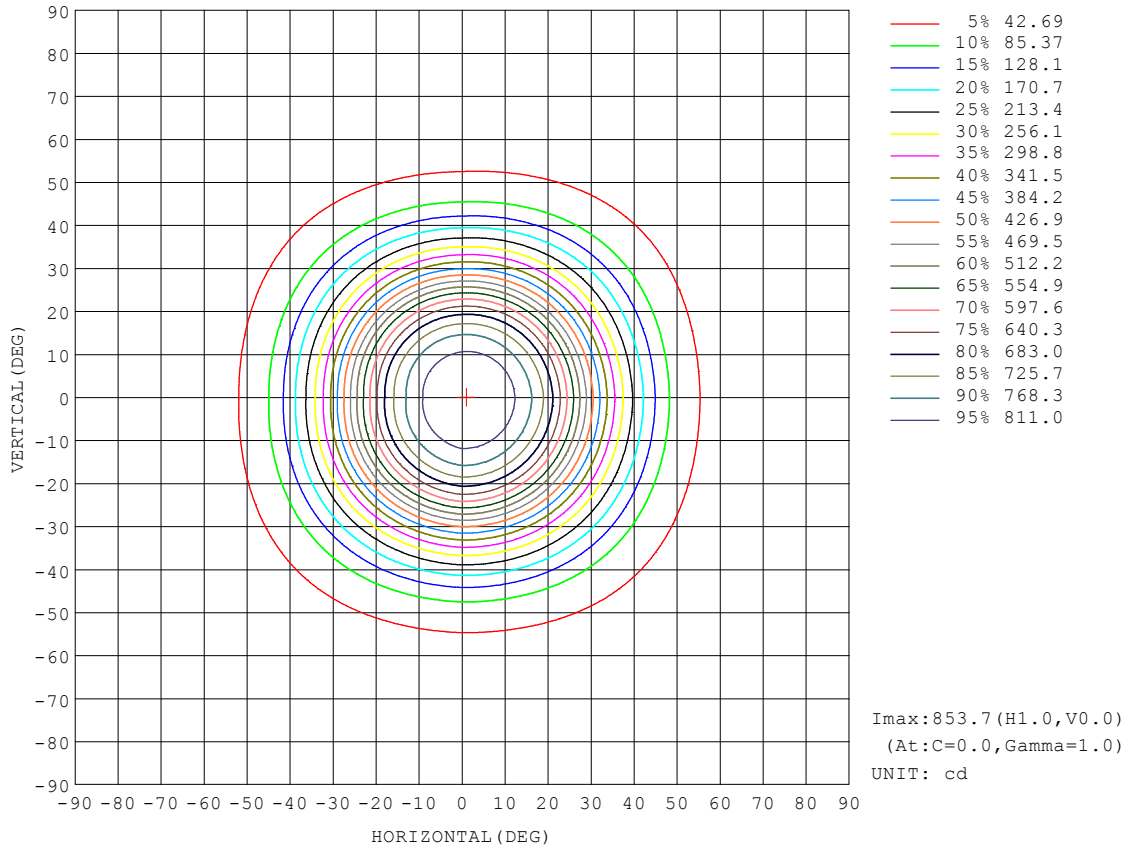
REFLECTANCE										
Ceiling	0.8	0.8	0.8	0.7	0.7	0.7	0.5	0.5	0.5	0
Walls	0.7	0.5	0.3	0.7	0.5	0.3	0.7	0.5	0.3	0
Working plane	0.2	0.2	0.2	0.2	0.2	0.2	0.2	0.2	0.2	0
ROOM INDEX	UTILIZATION FACTORS (PERCENT) $k(RI) \times RCR = 5$									
k = 0.60	80	73	68	80	72	68	79	72	68	63
0.80	88	81	77	88	81	77	86	80	76	72
1.00	94	87	83	93	87	82	91	87	82	77
1.25	99	92	88	98	92	88	95	90	87	82
1.50	102	96	92	101	95	92	98	94	90	85
2.00	106	101	97	104	99	96	101	97	94	88
2.50	108	103	100	106	102	99	103	99	97	90
3.00	110	106	102	108	104	101	104	101	99	92
4.00	112	109	106	110	107	105	106	104	102	94
5.00	114	111	108	111	109	107	107	105	104	95
ROOM INDEX	UF(total)									Direct
According to DIN EN 13032-2 2004			Suspended				SHRNOM = 1.25			

C Range: 0 - 360DEG
 C Interval: 90.0DEG
 Test Speed: HIGH
 Temperature:25.3DEG
 Operators:
 Test Date:2022-01-11

Range: 0 - 180DEG
 Interval: 1.0DEG
 Test System:EVERFINE GO-2000A_V1 SYSTEM V2.00.446
 Humidity:65.0%
 Test Distance:8.690m [K=1.0000]
 Remarks:

ISOCANDELA DIAGRAM

Test:U:230.14V I:0.0442A P:8.6957W PF:0.8334 Freq:49.99Hz UTHDi:0.00% ITHDi:0.00% KDisp:0 Lamp Flux:873.729x1 lm		
NAME: CD10W-CC-B 4000K	TYPE: 10W	WEIGHT:
SPEC.: 4000K	DIM.:	SERIAL No.: 1
MFR.:	SUR.: 0.0022	Shielding Angle:

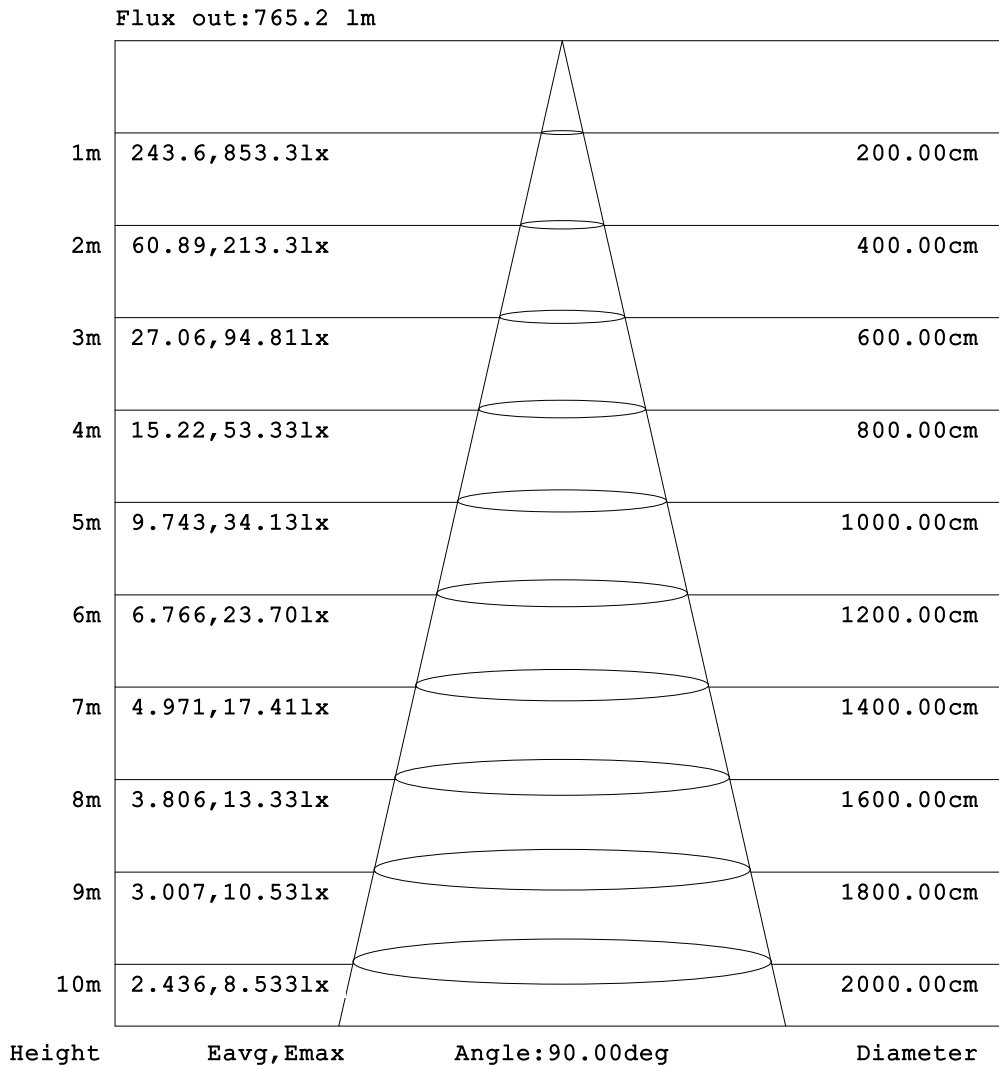


C Range: 0 - 360DEG
 C Interval: 90.0DEG
 Test Speed: HIGH
 Temperature:25.3DEG
 Operators:
 Test Date:2022-01-11

Range: 0 - 180DEG
 Interval: 1.0DEG
 Test System:EVERFINE GO-2000A_V1 SYSTEM V2.00.446
 Humidity:65.0%
 Test Distance:8.690m [K=1.0000]
 Remarks:

AAI Figure

Test:U:230.14V I:0.0442A P:8.6957W PF:0.8334 Freq:49.99Hz UTHDi:0.00% ITHDi:0.00% KDisp:0 Lamp Flux:873.729x1 lm		
NAME: CD10W-CC-B 4000K	TYPE: 10W	WEIGHT:
SPEC.: 4000K	DIM.:	SERIAL No.: 1
MFR.:	SUR.: 0.0022	Shielding Angle:



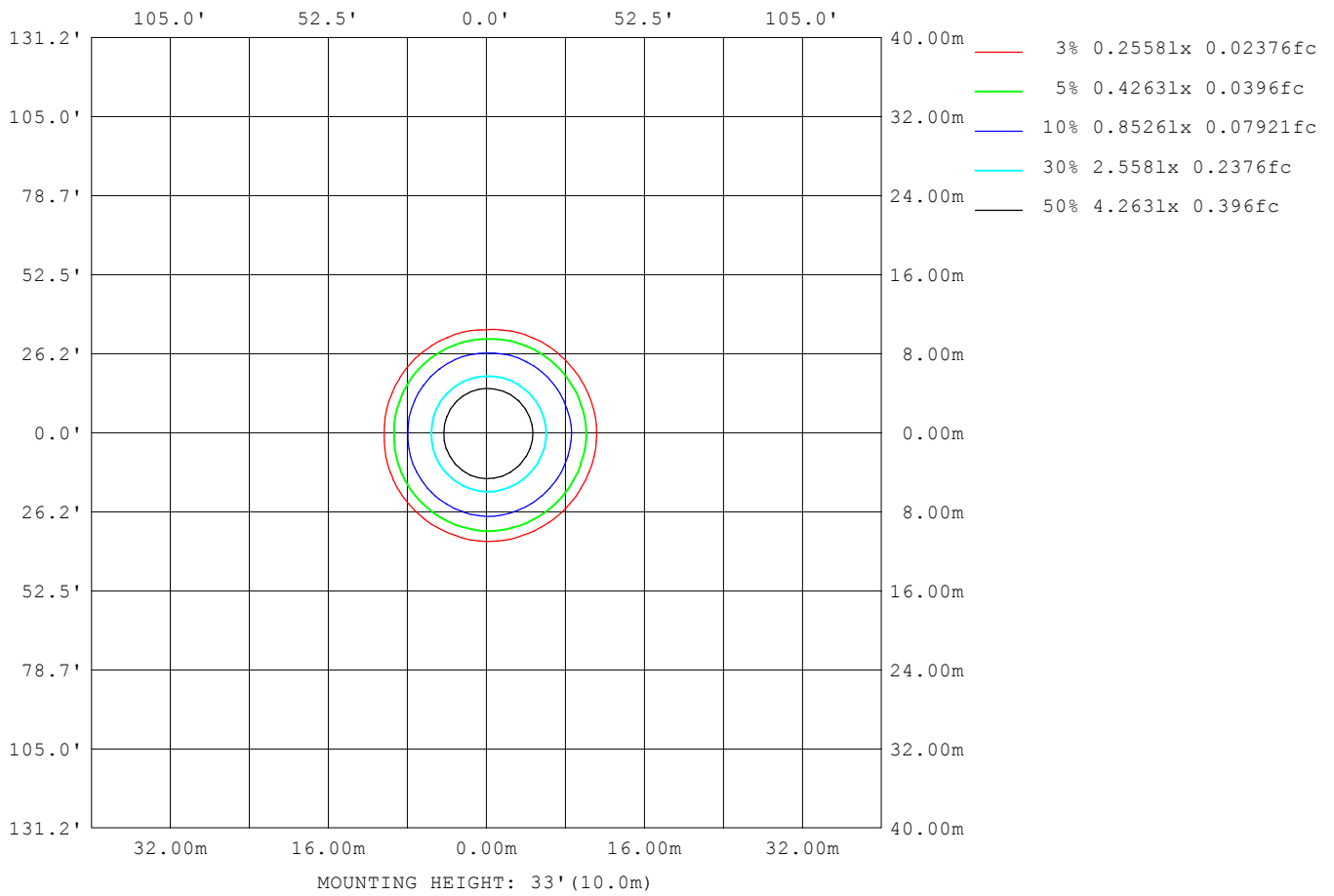
Note:The Curves indicate the illuminated area and the average illumination when the luminaire is at different distance.

C Range: 0 - 360DEG
 C Interval: 90.0DEG
 Test Speed: HIGH
 Temperature:25.3DEG
 Operators:
 Test Date:2022-01-11

Range: 0 - 180DEG
 Interval: 1.0DEG
 Test System:EVERFINE GO-2000A_V1 SYSTEM V2.00.446
 Humidity:65.0%
 Test Distance:8.690m [K=1.0000]
 Remarks:

ISOLUX DIAGRAM

Test:U:230.14V I:0.0442A P:8.6957W PF:0.8334 Freq:49.99Hz UTHDi:0.00% ITHDi:0.00% KDisp:0 Lamp Flux:873.729x1 lm		
NAME: CD10W-CC-B 4000K	TYPE: 10W	WEIGHT:
SPEC.: 4000K	DIM.:	SERIAL No.: 1
MFR.:	SUR.: 0.0022	Shielding Angle:



C Range: 0 - 360DEG
 C Interval: 90.0DEG
 Test Speed: HIGH
 Temperature:25.3DEG
 Operators:
 Test Date:2022-01-11

Range: 0 - 180DEG
 Interval: 1.0DEG
 Test System:EVERFINE GO-2000A_V1 SYSTEM V2.00.446
 Humidity:65.0%
 Test Distance:8.690m [K=1.0000]
 Remarks:

LED Avg.L Report

Test:U:230.14V I:0.0442A P:8.6957W PF:0.8334 Freq:49.99Hz UTHDi:0.00% ITHDi:0.00% KDisp:0 Lamp Flux:873.729x1 lm		
NAME: CD10W-CC-B 4000K	TYPE: 10W	WEIGHT:
SPEC.: 4000K	DIM.:	SERIAL No.: 1
MFR.:	SUR.: 0.0022	Shielding Angle:

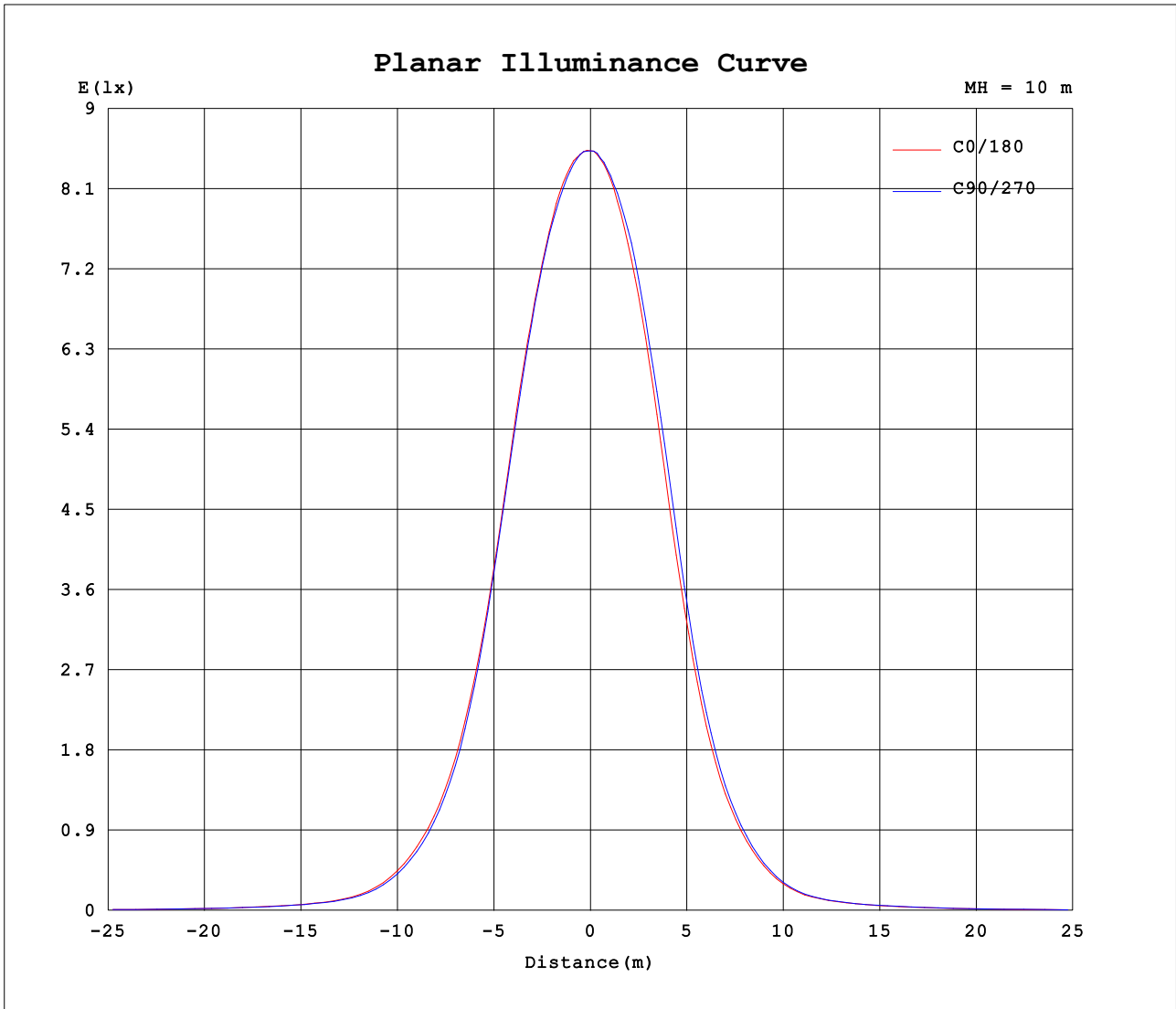
AvgL	cd/m2
L_0~180 (65) av	23419
L_0~180 (75) av	15377
L_0~180 (85) av	7456
L_90~270 (65) av	23688
L_90~270 (75) av	15944
L_90~270 (85) av	7704
L_45 (65) av	23449
L_45 (75) av	15575
L_45 (85) av	7504

Standard: GB/T 29293-2012

C Range: 0 - 360DEG
 C Interval: 90.0DEG
 Test Speed: HIGH
 Temperature:25.3DEG
 Operators:
 Test Date:2022-01-11

Range: 0 - 180DEG
 Interval: 1.0DEG
 Test System:EVERFINE GO-2000A_V1 SYSTEM V2.00.446
 Humidity:65.0%
 Test Distance:8.690m [K=1.0000]
 Remarks:

Planar Illuminance Curve



C Range: 0 - 360DEG
 C Interval: 90.0DEG
 Test Speed: HIGH
 Temperature: 25.3DEG
 Operators:
 Test Date: 2022-01-11

Range: 0 - 180DEG
 Interval: 1.0DEG
 Test System: EVERFINE GO-2000A_V1 SYSTEM V2.00.446
 Humidity: 65.0%
 Test Distance: 8.690m [K=1.0000]
 Remarks:

LUMINOUS DISTRIBUTION INTENSITY DATA

Test:U:230.14V I:0.0442A P:8.6957W PF:0.8334 Freq:49.99Hz UTHDi:0.00% ITHDi:0.00% KDisp:0 Lamp Flux:873.729x1 lm		
NAME: CD10W-CC-B 4000K	TYPE: 10W	WEIGHT:
SPEC.: 4000K	DIM.:	SERIAL No.: 1
MFR.:	SUR.: 0.0022	Shielding Angle:

Table--1

UNIT: cd

C (DEG) \ φ (DEG)	0	90	180	270															
0	853	853	853	853															
5	851	848	839	842															
10	831	824	802	815															
15	783	779	740	762															
20	706	697	633	667															
25	581	575	496	532															
30	440	429	356	380															
35	311	296	238	255															
40	207	194	151	160															
45	127	117	84.6	89.6															
50	68.5	63.3	49.5	51.5															
55	43.6	41.9	35.0	36.5															
60	32.0	30.9	26.4	27.7															
65	23.8	23.2	19.7	20.9															
70	17.0	16.5	13.2	14.4															
75	10.2	9.88	7.33	8.28															
80	5.06	4.82	3.30	3.90															
85	1.76	1.68	1.10	1.28															
90	0.10	0.08	0.08	0.08															
95	0.08	0.11	0.11	0.08															
100	0.10	0.14	0.14	0.10															
105	0.12	0.20	0.20	0.12															
110	0.20	0.29	0.29	0.21															
115	0.33	0.43	0.44	0.35															
120	0.53	0.63	0.64	0.54															
125	0.80	0.92	0.93	0.82															
130	1.16	1.29	1.29	1.19															
135	1.58	1.72	1.72	1.59															
140	2.03	2.17	2.16	2.02															
145	2.51	2.66	2.62	2.49															
150	2.97	3.11	3.04	2.91															
155	3.39	3.51	3.43	3.29															
160	3.75	3.88	3.79	3.66															
165	4.12	4.23	4.16	4.04															
170	4.46	4.52	4.48	4.34															
175	4.69	4.73	4.72	4.58															
180	4.79	4.81	4.79	4.79															

C Range: 0 - 360DEG
 C Interval: 90.0DEG
 Test Speed: HIGH
 Temperature:25.3DEG
 Operators:
 Test Date:2022-01-11

φ Range: 0 - 180DEG
 φ Interval: 1.0DEG
 Test System:EVERFINE GO-2000A_V1 SYSTEM V2.00.446
 Humidity:65.0%
 Test Distance:8.690m [K=1.0000]
 Remarks: