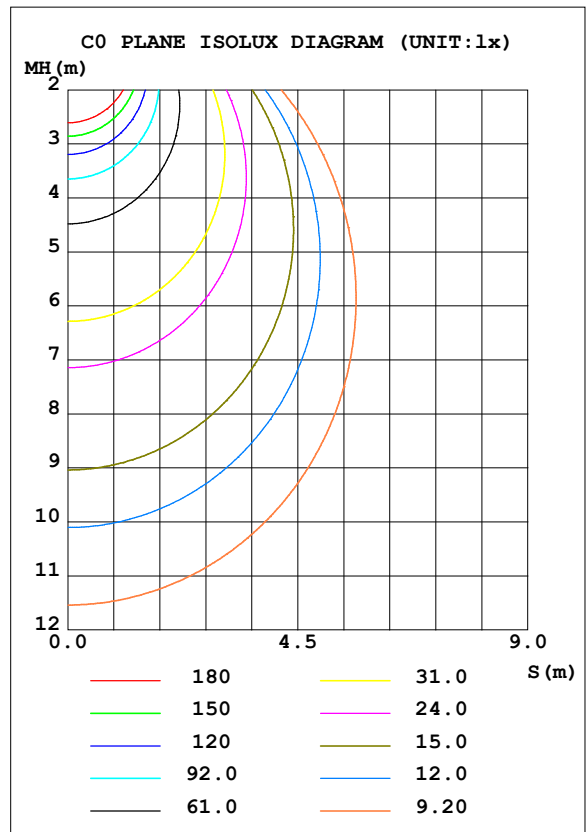
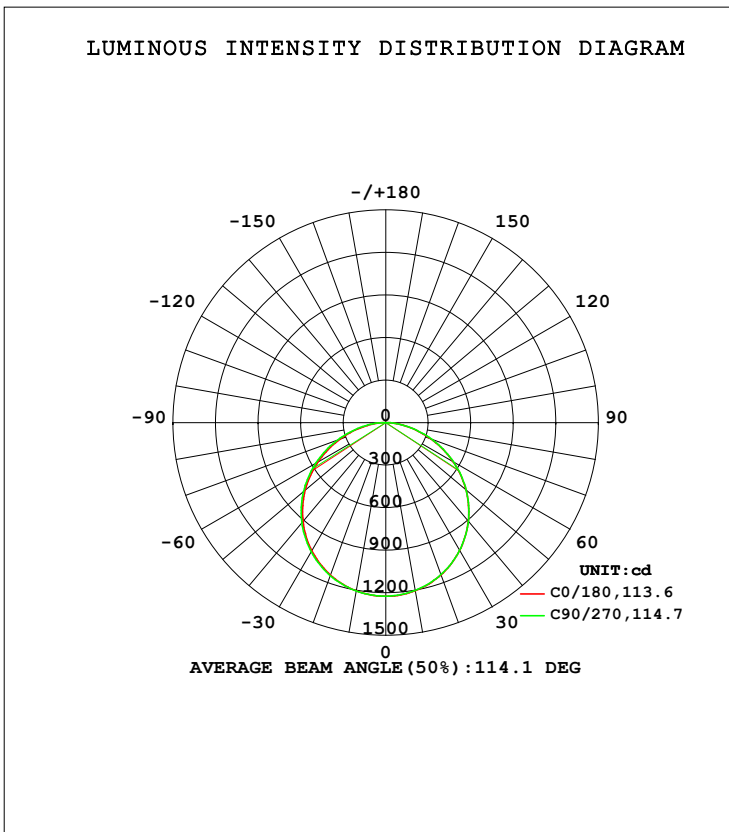


LUMINAIRE PHOTOMETRIC TEST REPORT

Test:U:240.13V I:0.1593A P:36.437W PF:0.9526 Freq:50.00Hz Lamp Flux:3575.97x1 lm		
NAME: BLP36W-12030-CC 5700K	TYPE:36W	WEIGHT:
SPEC.:5700K	DIM.:	SERIAL No.:1
MFR.:	SUR.:	Shielding Angle:

DATA OF LAMP		PHOTOMETRIC DATA			
MODEL	BLP36W-12030-CC 5700K	Imax (cd)	1225	S/MH (C0/180)	1.26
NOMINAL POWER (W)	36	LOR (%)	100.0	S/MH (C90/270)	1.28
RATED VOLTAGE (V)	240	TOTAL FLUX (lm)	3576.0	<input type="checkbox"/> UP, DN (C0-180)	0.0, 49.7
NOMINAL FLUX (lm)	3575.97	CIE CLASS	DIRECT	<input type="checkbox"/> UP, DN (C180-360)	0.0, 50.3
LAMPS INSIDE	1	<input type="checkbox"/> up (%)	0.0	CIBSE SHR NOM	1.25
TEST VOLTAGE (V)	240	<input type="checkbox"/> down (%)	100.0	CIBSE SHR MAX	1.35



C Range: 0 - 360DEG
 C Interval: 45.0DEG
 Test Speed: HIGH
 Temperature: 25.3DEG
 Operators: DAMIN
 Test Date: 2021-10-12

Range: 0 - 90DEG
 Interval: 1.0DEG
 Test System: EVERFINE GO-2000H_V1 SYSTEM V2.0.404.7
 Humidity: 65.0%
 Test Distance: 9.880m [K=1.0000]
 Remarks:

ZONAL FLUX DIAGRAM

ZONAL FLUX DIAGRAM:

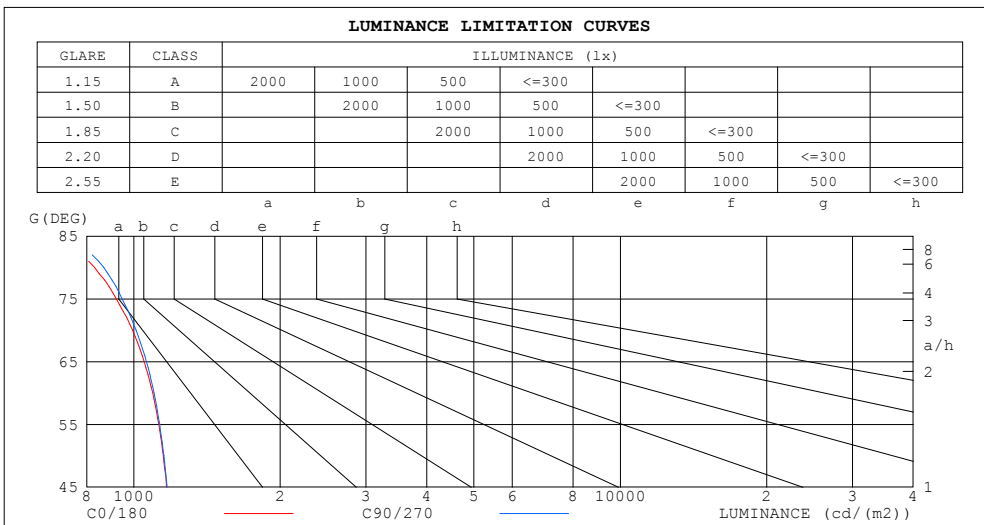
mm	C0	C45	C90	C135	C180	C225	C270	C315	mm	□ zone	□ total	%lum, lamp
10	1204	1202	1201	1202	1204	1204	1205	1204	0- 10	115.8	115.8	3.24,3.24
20	1142	1141	1140	1141	1143	1145	1148	1145	10- 20	332.6	448.4	12.5,12.5
30	1042	1042	1041	1042	1044	1047	1052	1047	20- 30	506.3	954.7	26.7,26.7
40	906.2	907.0	907.0	907.9	908.7	914.3	920.9	913.4	30- 40	614.2	1569	43.9,43.9
50	739.1	740.7	741.2	741.9	742.1	749.4	757.4	748.1	40- 50	641.2	2210	61.8,61.8
60	546.8	548.3	550.1	550.2	550.2	558.4	567.9	557.1	50- 60	582.4	2792	78.1,78.1
70	340.0	343.0	345.9	345.2	344.7	353.1	364.4	351.3	60- 70	446.9	3239	90.6,90.6
80	144.1	145.6	150.6	148.5	148.2	156.2	165.1	154.0	70- 80	261.5	3501	97.9,97.9
90	1.826	1.869	1.933	1.954	2.089	3.667	3.020	2.452	80- 90	75.11	3576	100,100
100									90-100			
110									100-110			
120									110-120			
130									120-130			
140									130-140			
150									140-150			
160									150-160			
170									160-170			
180									170-180			
DEG	LUMINOUS INTENSITY:cd									UNIT:lm		

C Range: 0 - 360DEG
 C Interval: 45.0DEG
 Test Speed: HIGH
 Temperature:25.3DEG
 Operators:DAMIN
 Test Date:2021-10-12

□ Range: 0 - 90DEG
 □ Interval: 1.0DEG
 Test System:EVERFINE GO-2000H_V1 SYSTEM V2.0.404.7
 Humidity:65.0%
 Test Distance:9.880m [K=1.0000]
 Remarks:

LUMINANCE LIMITATION CURVES

Test:U:240.13V I:0.1593A P:36.437W PF:0.9526 Freq:50.00Hz Lamp Flux:3575.97x1 lm		
NAME: BLP36W-12030-CC 5700K	TYPE:36W	WEIGHT:
SPEC.:5700K	DIM.:	SERIAL No.:1
MFR.:	SUR.:	Shielding Angle:



LUMINANCE cd/(m2)		
G (DEG)	C0/180	C90/270
85	698	731
80	830	867
75	920	946
70	994	1011
65	1050	1061
60	1094	1100
55	1125	1130
50	1150	1153
45	1168	1171

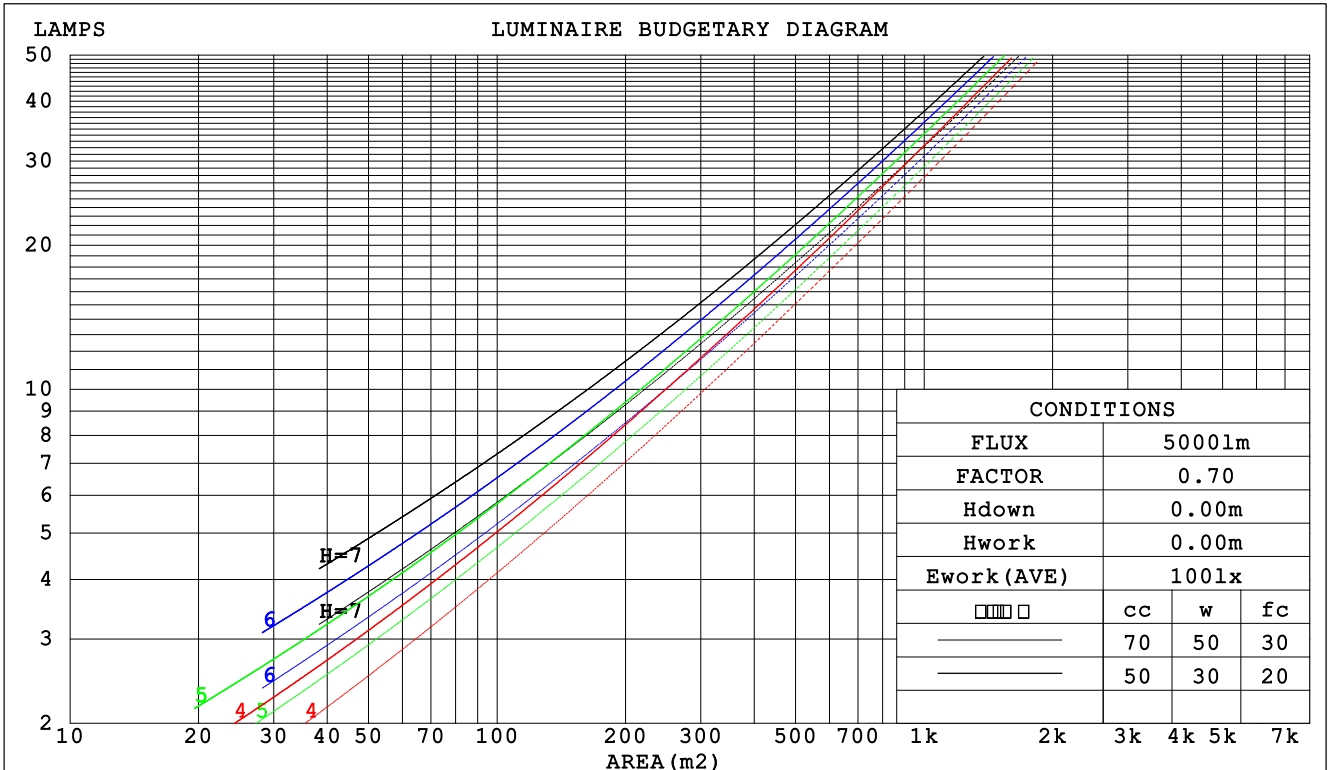
C Range: 0 - 360DEG
 C Interval: 45.0DEG
 Test Speed: HIGH
 Temperature:25.3DEG
 Operators:DAMIN
 Test Date:2021-10-12

Range: 0 - 90DEG
 Interval: 1.0DEG
 Test System:EVERFINE GO-2000H_V1 SYSTEM V2.0.404.7
 Humidity:65.0%
 Test Distance:9.880m [K=1.0000]
 Remarks:

CU AND LUMINAIRE BUDGETARY ESTIMATE DIAGRAM

Test:U:240.13V I:0.1593A P:36.437W PF:0.9526 Freq:50.00Hz Lamp Flux:3575.97x1 lm		
NAME: BLP36W-12030-CC 5700K	TYPE:36W	WEIGHT:
SPEC.:5700K	DIM.:	SERIAL No.:1
MFR.:	SUR.:	Shielding Angle:

□cc	80%			70%			50%			30%			10%			0
□w	50%	30%	10%	50%	30%	10%	50%	30%	10%	50%	30%	10%	50%	30%	10%	0
□fc	20%			20%			20%			20%			20%			0
RCR	RCR:Room Cavity Ratio						Coefficients of Utilization(CU)									
0.0	1.19	1.19	1.19	1.16	1.16	1.16	1.11	1.11	1.11	1.06	1.06	1.06	1.02	1.02	1.02	1.00
1.0	1.04	.99	.95	1.01	.97	.94	.97	.94	.91	.93	.90	.88	.90	.87	.85	.83
2.0	.90	.83	.77	.88	.82	.76	.85	.79	.75	.81	.77	.73	.78	.75	.71	.69
3.0	.79	.71	.64	.77	.70	.63	.74	.68	.62	.72	.66	.61	.69	.64	.60	.58
4.0	.70	.61	.54	.69	.60	.54	.66	.59	.53	.64	.57	.52	.61	.56	.52	.49
5.0	.62	.53	.46	.61	.53	.46	.59	.51	.46	.57	.50	.45	.55	.49	.45	.43
6.0	.56	.47	.41	.55	.47	.40	.53	.46	.40	.52	.45	.40	.50	.44	.39	.37
7.0	.51	.42	.36	.50	.42	.36	.48	.41	.35	.47	.40	.35	.46	.39	.35	.33
8.0	.46	.38	.32	.46	.37	.32	.44	.37	.31	.43	.36	.31	.42	.36	.31	.29
9.0	.42	.34	.29	.42	.34	.29	.41	.33	.28	.40	.33	.28	.39	.33	.28	.26
10.0	.39	.31	.26	.39	.31	.26	.38	.31	.26	.37	.30	.26	.36	.30	.25	.24



C Range: 0 - 360DEG
 C Interval: 45.0DEG
 Test Speed: HIGH
 Temperature:25.3DEG
 Operators:DAMIN
 Test Date:2021-10-12

□ Range: 0 - 90DEG
 □ Interval: 1.0DEG
 Test System:EVERFINE GO-2000H_V1 SYSTEM V2.0.404.7
 Humidity:65.0%
 Test Distance:9.880m [K=1.0000]
 Remarks:

WEC AND CCEC

Test:U:240.13V I:0.1593A P:36.437W PF:0.9526 Freq:50.00Hz Lamp Flux:3575.97x1 lm		
NAME: BLP36W-12030-CC 5700K	TYPE:36W	WEIGHT:
SPEC.:5700K	DIM.:	SERIAL No.:1
MFR.:	SUR.:	Shielding Angle:

<input type="checkbox"/> cc	80%			70%			50%			30%			10%			0
<input type="checkbox"/> w	50%	30%	10%	50%	30%	10%	50%	30%	10%	50%	30%	10%	50%	30%	10%	0
<input type="checkbox"/> fc	20%			20%			20%			20%			20%			0
RCR	RCR:Room Cavity Ratio						Wall Exitance Coefficients (WEC)									
0.0																
1.0	.314	.179	.057	.307	.175	.056	.294	.169	.054	.282	.163	.052	.271	.157	.051	
2.0	.295	.162	.050	.289	.159	.049	.277	.154	.048	.266	.149	.047	.256	.145	.046	
3.0	.273	.145	.043	.267	.143	.043	.257	.139	.042	.247	.135	.042	.238	.132	.041	
4.0	.251	.131	.038	.246	.129	.038	.237	.126	.038	.229	.123	.037	.221	.120	.037	
5.0	.232	.118	.034	.228	.117	.034	.219	.114	.034	.212	.112	.033	.205	.109	.033	
6.0	.215	.108	.031	.211	.107	.031	.204	.104	.030	.197	.102	.030	.191	.100	.030	
7.0	.200	.099	.028	.197	.098	.028	.190	.096	.028	.184	.094	.027	.178	.093	.027	
8.0	.187	.091	.026	.184	.090	.026	.178	.089	.025	.172	.087	.025	.167	.086	.025	
9.0	.175	.085	.024	.172	.084	.024	.167	.083	.023	.162	.081	.023	.157	.080	.023	
10.0	.164	.079	.022	.162	.078	.022	.157	.077	.022	.153	.076	.022	.149	.075	.021	

<input type="checkbox"/> cc	80%			70%			50%			30%			10%			0
<input type="checkbox"/> w	50%	30%	10%	50%	30%	10%	50%	30%	10%	50%	30%	10%	50%	30%	10%	0
<input type="checkbox"/> fc	20%			20%			20%			20%			20%			0
RCR	RCR:Room Cavity Ratio						Ceiling Cavity Exitance Coefficients (CCEC)									
0.0	.190	.190	.190	.163	.163	.163	.111	.111	.111	.064	.064	.064	.020	.020	.020	
1.0	.181	.156	.134	.155	.134	.115	.106	.092	.080	.061	.053	.046	.019	.017	.015	
2.0	.173	.132	.098	.148	.114	.084	.101	.079	.059	.058	.046	.035	.019	.015	.011	
3.0	.165	.114	.074	.141	.099	.064	.097	.069	.045	.056	.040	.027	.018	.013	.009	
4.0	.157	.101	.058	.135	.087	.050	.093	.061	.035	.054	.036	.021	.017	.012	.007	
5.0	.150	.091	.047	.129	.078	.041	.089	.055	.029	.051	.032	.017	.017	.010	.006	
6.0	.143	.082	.039	.123	.071	.034	.085	.050	.024	.049	.029	.014	.016	.010	.005	
7.0	.136	.075	.033	.117	.065	.029	.081	.046	.020	.047	.027	.012	.015	.009	.004	
8.0	.129	.070	.029	.111	.060	.025	.077	.042	.018	.045	.025	.011	.014	.008	.003	
9.0	.123	.065	.025	.106	.056	.022	.074	.039	.016	.043	.023	.009	.014	.008	.003	
10.0	.118	.060	.022	.101	.052	.020	.070	.037	.014	.041	.022	.008	.013	.007	.003	

C Range: 0 - 360DEG
 C Interval: 45.0DEG
 Test Speed: HIGH
 Temperature:25.3DEG
 Operators:DAMIN
 Test Date:2021-10-12

Range: 0 - 90DEG
 Interval: 1.0DEG
 Test System:EVERFINE GO-2000H_V1 SYSTEM V2.0.404.7
 Humidity:65.0%
 Test Distance:9.880m [K=1.0000]
 Remarks:

UGR(Unified Glare Rating) Table

Test:U:240.13V I:0.1593A P:36.437W PF:0.9526 Freq:50.00Hz Lamp Flux:3575.97x1 lm										
NAME: BLP36W-12030-CC 5700K					TYPE:36W			WEIGHT:		
SPEC.:5700K					DIM.:			SERIAL No.:1		
MFR.:					SUR.:			Shielding Angle:		
ceiling/cavity	0.7	0.7	0.5	0.5	0.3	0.7	0.7	0.5	0.5	0.3
walls	0.5	0.3	0.5	0.3	0.3	0.5	0.3	0.5	0.3	0.3
working plane	0.2	0.2	0.2	0.2	0.2	0.2	0.2	0.2	0.2	0.2
Room dimensions	Viewed crosswise					Viewed endwise				
x = 2H y = 2H	13.3	14.8	13.5	15.0	15.2	13.3	14.8	13.6	15.0	15.2
3H	14.8	16.2	15.1	16.4	16.7	14.8	16.2	15.1	16.5	16.7
4H	15.4	16.7	15.7	17.0	17.2	15.5	16.8	15.8	17.1	17.3
6H	15.8	17.1	16.2	17.4	17.6	15.9	17.2	16.2	17.5	17.7
8H	16.0	17.2	16.3	17.5	17.8	16.1	17.3	16.4	17.6	17.9
12H	16.0	17.2	16.4	17.5	17.8	16.1	17.3	16.5	17.6	17.9
4H 2H	13.9	15.2	14.2	15.5	15.7	13.9	15.3	14.2	15.5	15.8
3H	15.6	16.8	15.9	17.1	17.4	15.6	16.8	16.0	17.1	17.4
4H	16.3	17.4	16.7	17.7	18.1	16.4	17.5	16.7	17.8	18.1
6H	16.9	17.8	17.3	18.2	18.6	17.0	17.9	17.4	18.3	18.6
8H	17.1	18.0	17.5	18.3	18.7	17.2	18.1	17.6	18.4	18.8
12H	17.2	18.0	17.6	18.4	18.8	17.3	18.1	17.7	18.5	18.9
8H 4H	16.6	17.5	17.0	17.9	18.2	16.6	17.5	17.1	17.9	18.3
6H	17.3	18.0	17.7	18.4	18.9	17.4	18.1	17.8	18.5	19.0
8H	17.6	18.2	18.0	18.7	19.1	17.7	18.3	18.1	18.8	19.2
12H	17.8	18.3	18.2	18.8	19.3	17.9	18.4	18.3	18.9	19.4
12H 4H	16.6	17.4	17.0	17.8	18.2	16.7	17.5	17.1	17.9	18.3
6H	17.4	18.0	17.8	18.4	18.9	17.4	18.1	17.9	18.5	19.0
8H	17.7	18.2	18.1	18.7	19.2	17.8	18.3	18.2	18.8	19.3
Variations with the observer position at spacings:										
S = 1.0H	+ 0.2 / - 0.2					+ 0.1 / - 0.2				
1.5H	+ 0.2 / - 0.3					+ 0.2 / - 0.3				
2.0H	+ 0.2 / - 0.3					+ 0.2 / - 0.3				

CIE Pub.117, 3576 lm Total Lamp Luminous Flux Corrected (8log(F/F0) = 4.4)

C Range: 0 - 360DEG
 C Interval: 45.0DEG
 Test Speed: HIGH
 Temperature:25.3DEG
 Operators:DAMIN
 Test Date:2021-10-12

Range: 0 - 90DEG
 Interval: 1.0DEG
 Test System:EVERFINE GO-2000H_V1 SYSTEM V2.0.404.7
 Humidity:65.0%
 Test Distance:9.880m [K=1.0000]
 Remarks:

UTILIZATION FACTORS TABLE

Test:U:240.13V I:0.1593A P:36.437W PF:0.9526 Freq:50.00Hz Lamp Flux:3575.97x1 lm		
NAME: BLP36W-12030-CC 5700K	TYPE:36W	WEIGHT:
SPEC.:5700K	DIM.:	SERIAL No.:1
MFR.:	SUR.:	Shielding Angle:

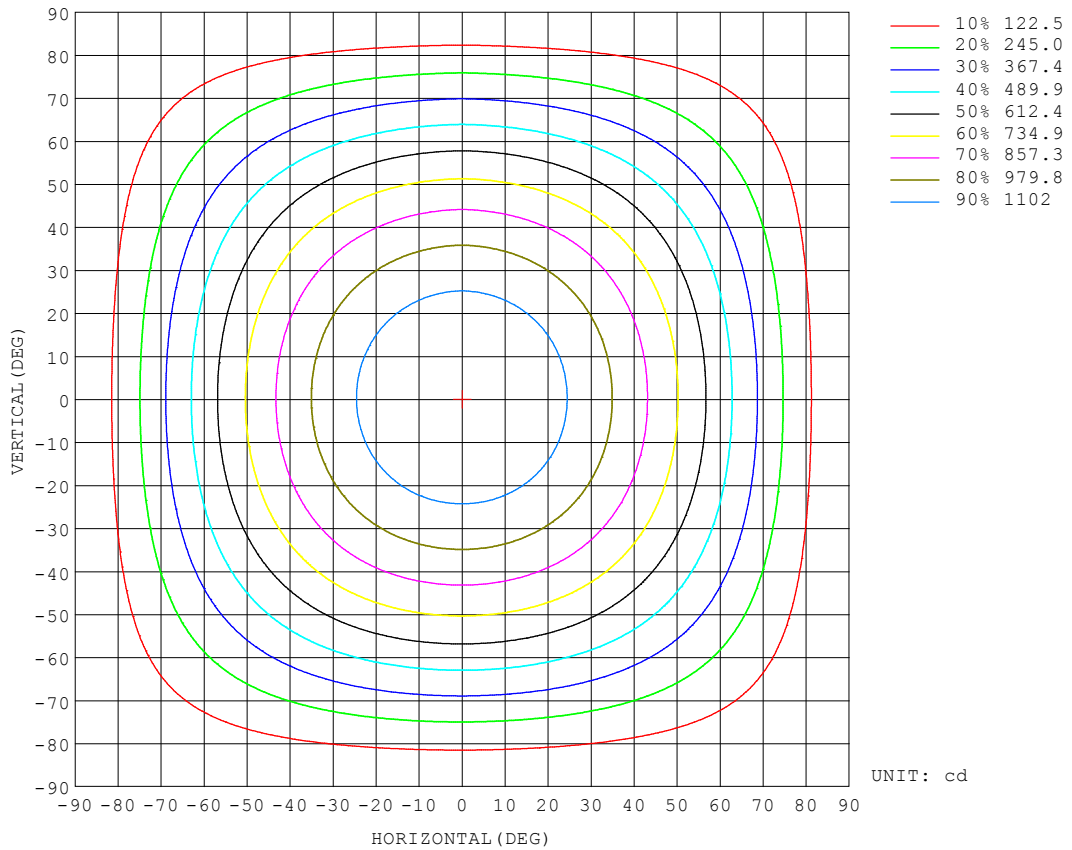
REFLECTANCE										
Ceiling	0.8	0.8	0.8	0.7	0.7	0.7	0.5	0.5	0.5	0
Walls	0.7	0.5	0.3	0.7	0.5	0.3	0.7	0.5	0.3	0
Working plane	0.2	0.2	0.2	0.2	0.2	0.2	0.2	0.2	0.2	0
ROOM INDEX	UTILIZATION FACTORS (PERCENT) $k(RI) \times RCR = 5$									
k = 0.60	57	45	38	56	45	38	55	45	38	32
0.80	67	55	48	66	55	48	64	54	47	40
1.00	76	64	57	74	64	57	72	65	56	49
1.25	83	72	65	81	71	64	79	70	64	56
1.50	88	78	71	86	77	70	83	75	69	61
2.00	95	86	79	93	85	79	89	83	77	69
2.50	99	91	85	97	89	84	93	87	82	73
3.00	102	95	89	100	93	88	96	91	86	78
4.00	106	100	96	104	98	94	99	95	91	83
5.00	108	104	99	106	102	98	101	98	95	86
ROOM INDEX	UF(total)									Direct
According to DIN EN 13032-2 2004			Suspended				SHRNOM = 1.25			

C Range: 0 - 360DEG
 C Interval: 45.0DEG
 Test Speed: HIGH
 Temperature:25.3DEG
 Operators:DAMIN
 Test Date:2021-10-12

Range: 0 - 90DEG
 Interval: 1.0DEG
 Test System:EVERFINE GO-2000H_V1 SYSTEM V2.0.404.7
 Humidity:65.0%
 Test Distance:9.880m [K=1.0000]
 Remarks:

ISOCANDELA DIAGRAM

Test:U:240.13V I:0.1593A P:36.437W PF:0.9526 Freq:50.00Hz Lamp Flux:3575.97x1 lm		
NAME: BLP36W-12030-CC 5700K	TYPE:36W	WEIGHT:
SPEC.:5700K	DIM.:	SERIAL No.:1
MFR.:	SUR.:	Shielding Angle:

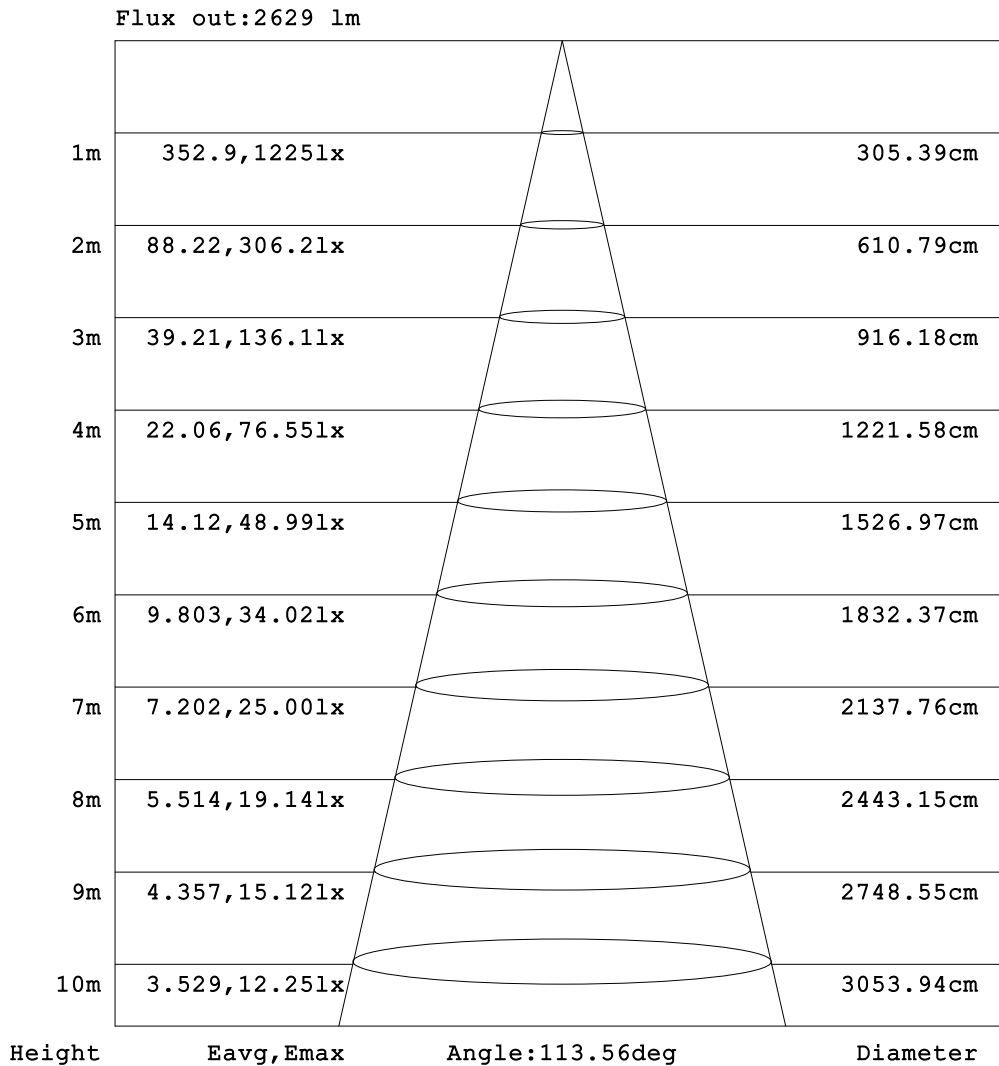


C Range: 0 - 360DEG
 C Interval: 45.0DEG
 Test Speed: HIGH
 Temperature:25.3DEG
 Operators:DAMIN
 Test Date:2021-10-12

Range: 0 - 90DEG
 Interval: 1.0DEG
 Test System:EVERFINE GO-2000H_V1 SYSTEM V2.0.404.7
 Humidity:65.0%
 Test Distance:9.880m [K=1.0000]
 Remarks:

AAI Figure

Test:U:240.13V I:0.1593A P:36.437W PF:0.9526 Freq:50.00Hz Lamp Flux:3575.97x1 lm		
NAME: BLP36W-12030-CC 5700K	TYPE:36W	WEIGHT:
SPEC.:5700K	DIM.:	SERIAL No.:1
MFR.:	SUR.:	Shielding Angle:



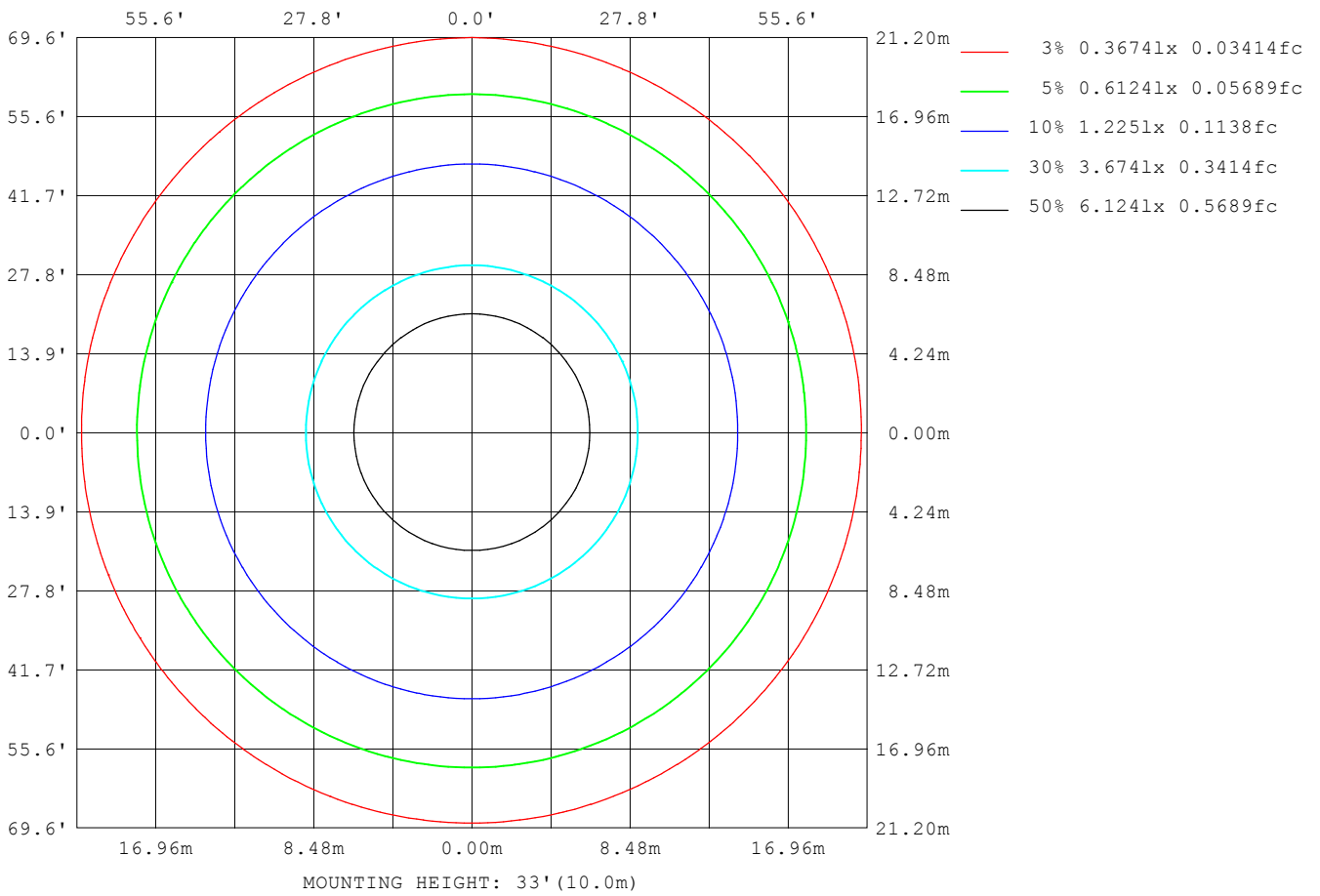
Note:The Curves indicate the illuminated area and the average illumination when the luminaire is at different distance.

C Range: 0 - 360DEG
 C Interval: 45.0DEG
 Test Speed: HIGH
 Temperature:25.3DEG
 Operators:DAMIN
 Test Date:2021-10-12

Range: 0 - 90DEG
 Interval: 1.0DEG
 Test System:EVERFINE GO-2000H_V1 SYSTEM V2.0.404.7
 Humidity:65.0%
 Test Distance:9.880m [K=1.0000]
 Remarks:

ISOLUX DIAGRAM

Test:U:240.13V I:0.1593A P:36.437W PF:0.9526 Freq:50.00Hz Lamp Flux:3575.97x1 lm		
NAME: BLP36W-12030-CC 5700K	TYPE:36W	WEIGHT:
SPEC.:5700K	DIM.:	SERIAL No.:1
MFR.:	SUR.:	Shielding Angle:



C Range: 0 - 360DEG
 C Interval: 45.0DEG
 Test Speed: HIGH
 Temperature:25.3DEG
 Operators:DAMIN
 Test Date:2021-10-12

Range: 0 - 90DEG
 Interval: 1.0DEG
 Test System:EVERFINE GO-2000H_V1 SYSTEM V2.0.404.7
 Humidity:65.0%
 Test Distance:9.880m [K=1.0000]
 Remarks:

LED Avg.L Report

Test:U:240.13V I:0.1593A P:36.437W PF:0.9526 Freq:50.00Hz Lamp Flux:3575.97x1 lm		
NAME: BLP36W-12030-CC 5700K	TYPE:36W	WEIGHT:
SPEC.:5700K	DIM.:	SERIAL No.:1
MFR.:	SUR.:	Shielding Angle:

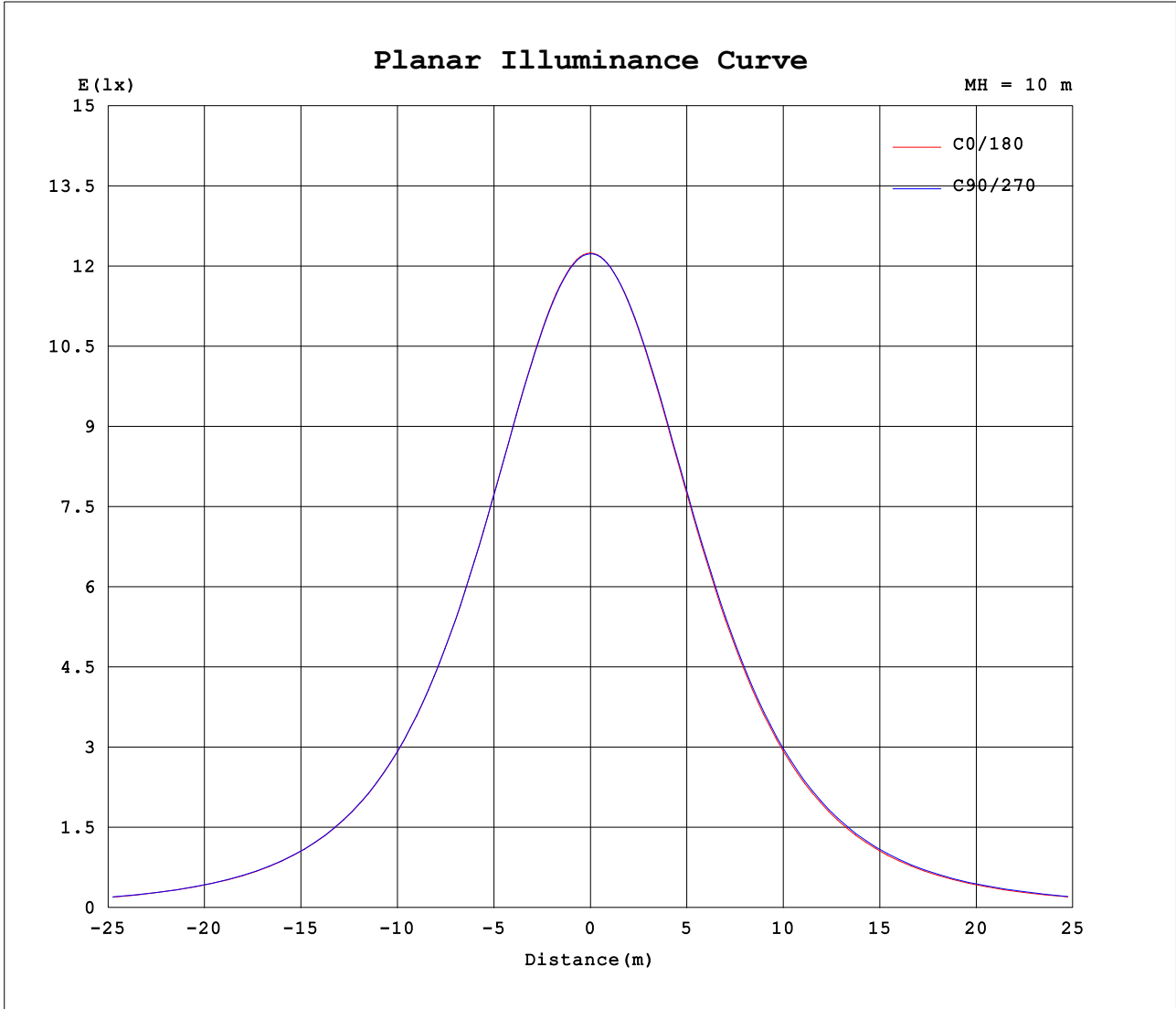
AvgL	cd/m2
L_0~180 (65) av	1056
L_0~180 (75) av	929
L_0~180 (85) av	721
L_90~270 (65) av	1083
L_90~270 (75) av	980
L_90~270 (85) av	802
L_45 (65) av	1070
L_45 (75) av	952
L_45 (85) av	747

Standard: GB/T 29293-2012

C Range: 0 - 360DEG
 C Interval: 45.0DEG
 Test Speed: HIGH
 Temperature:25.3DEG
 Operators:DAMIN
 Test Date:2021-10-12

Range: 0 - 90DEG
 Interval: 1.0DEG
 Test System:EVERFINE GO-2000H_V1 SYSTEM V2.0.404.7
 Humidity:65.0%
 Test Distance:9.880m [K=1.0000]
 Remarks:

Planar Illuminance Curve



C Range: 0 - 360DEG
 C Interval: 45.0DEG
 Test Speed: HIGH
 Temperature: 25.3DEG
 Operators: DAMIN
 Test Date: 2021-10-12

Range: 0 - 90DEG
 Interval: 1.0DEG
 Test System: EVERFINE GO-2000H_V1 SYSTEM V2.0.404.7
 Humidity: 65.0%
 Test Distance: 9.880m [K=1.0000]
 Remarks:

