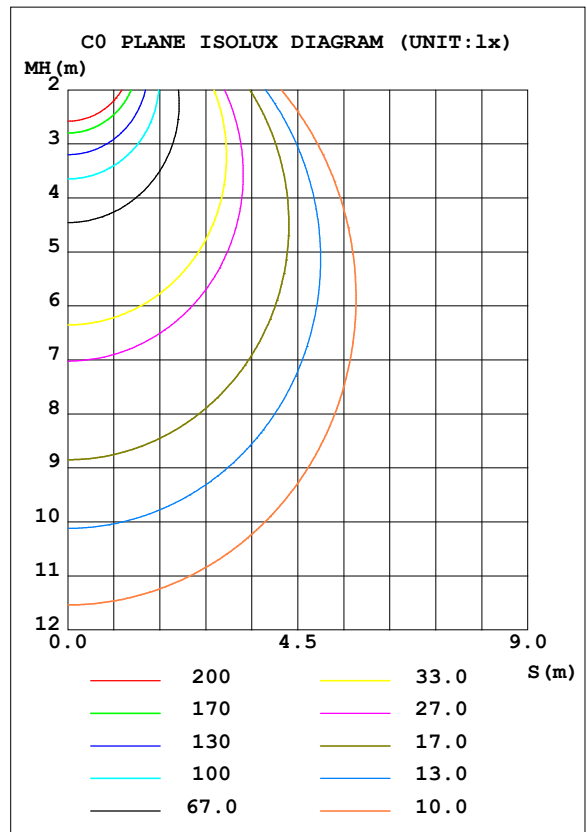
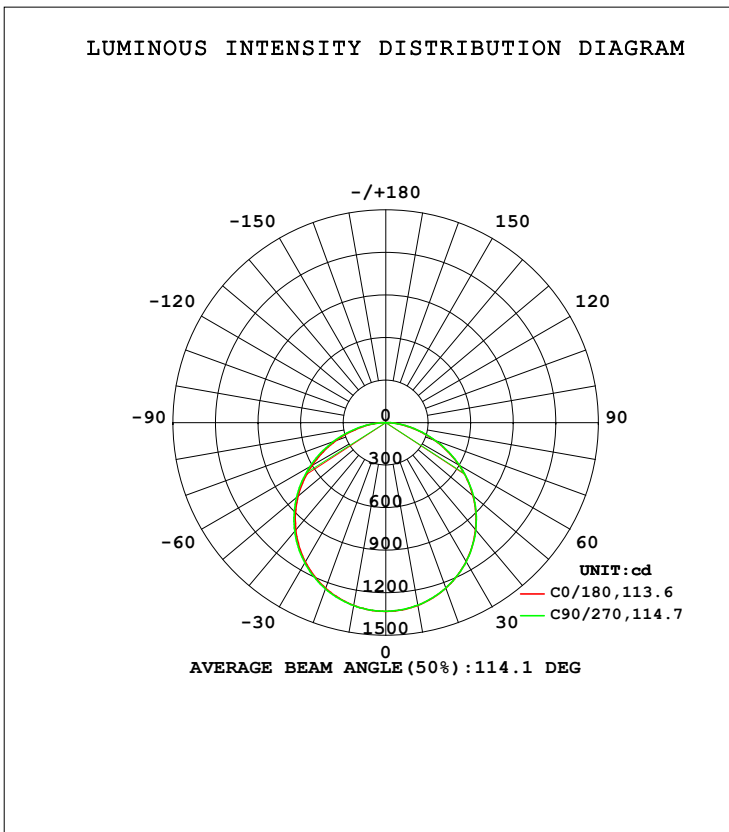


LUMINAIRE PHOTOMETRIC TEST REPORT

Test:U:240.11V I:0.1510A P:34.268W PF:0.9451 Freq:50.00Hz Lamp Flux:3887.21x1 lm		
NAME: BLP36W-12030-CC 4000K	TYPE:36W	WEIGHT:
SPEC.:4000K	DIM.:	SERIAL No.:1
MFR.:	SUR.:	Shielding Angle:

DATA OF LAMP		PHOTOMETRIC DATA Eff: 113.43 lm/W			
MODEL	BLP36W-12030-CC 4000K	I <sub>max</sub> (cd)	1331	S/MH (C0/180)	1.26
NOMINAL POWER (W)	36	LOR (%)	100.0	S/MH (C90/270)	1.28
RATED VOLTAGE (V)	240	TOTAL FLUX (lm)	3887.2	<input type="checkbox"/> UP, DN (C0-180)	0.0, 49.7
NOMINAL FLUX (lm)	3887.21	CIE CLASS	DIRECT	<input type="checkbox"/> UP, DN (C180-360)	0.0, 50.3
LAMPS INSIDE	1	<input type="checkbox"/> up (%)	0.0	CIBSE SHR NOM	1.25
TEST VOLTAGE (V)	240	<input type="checkbox"/> down (%)	100.0	CIBSE SHR MAX	1.35



C Range: 0 - 360DEG  
 C Interval: 45.0DEG  
 Test Speed: HIGH  
 Temperature: 25.3DEG  
 Operators: DAMIN  
 Test Date: 2021-10-12

Range: 0 - 90DEG  
 Interval: 1.0DEG  
 Test System: EVERFINE GO-2000H\_V1 SYSTEM V2.0.404.7  
 Humidity: 65.0%  
 Test Distance: 9.880m [K=1.0000]  
 Remarks:

**ZONAL FLUX DIAGRAM**

ZONAL FLUX DIAGRAM:

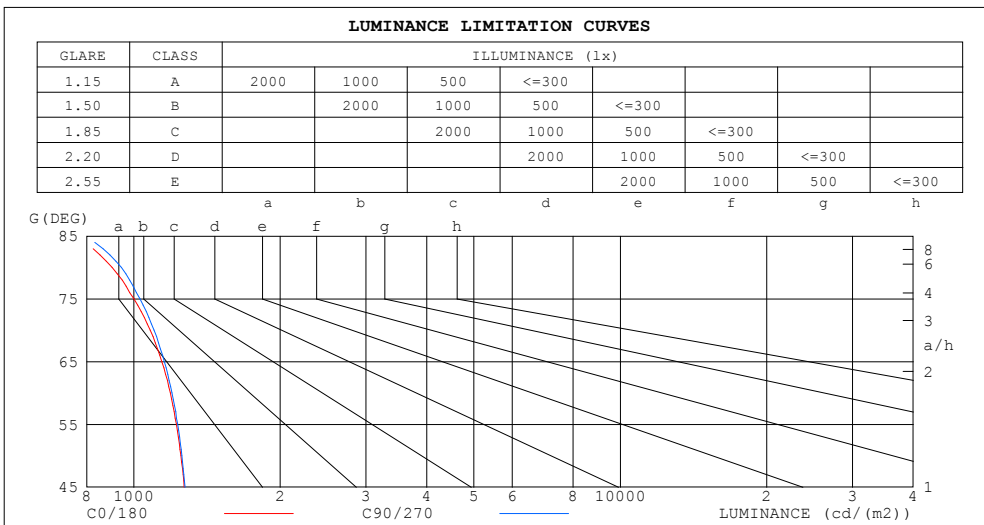
mm	C0	C45	C90	C135	C180	C225	C270	C315	mm	□ zone	□ total	%lum, lamp
10	1308	1307	1307	1307	1309	1309	1310	1308	0- 10	125.9	125.9	3.24,3.24
20	1241	1241	1240	1242	1242	1244	1247	1243	10- 20	361.5	487.4	12.5,12.5
30	1132	1133	1133	1134	1135	1138	1142	1137	20- 30	550.4	1038	26.7,26.7
40	984.8	986.9	987.6	988.2	987.8	993.0	999.5	991.8	30- 40	667.6	1705	43.9,43.9
50	803.3	806.3	807.0	808.0	807.0	814.0	822.1	812.6	40- 50	697.1	2403	61.8,61.8
60	594.3	596.6	599.2	599.0	598.2	606.4	616.0	604.9	50- 60	633.1	3036	78.1,78.1
70	369.7	373.2	376.5	375.9	374.9	383.4	395.2	381.6	60- 70	485.7	3521	90.6,90.6
80	156.8	158.3	163.6	161.7	161.4	169.8	179.1	167.3	70- 80	284.2	3806	97.9,97.9
90	1.997	2.089	2.111	2.125	2.317	4.087	3.568	2.736	80- 90	81.66	3887	100,100
100									90-100			
110									100-110			
120									110-120			
130									120-130			
140									130-140			
150									140-150			
160									150-160			
170									160-170			
180									170-180			
DEG	LUMINOUS INTENSITY:cd									UNIT:lm		

C Range: 0 - 360DEG  
 C Interval: 45.0DEG  
 Test Speed: HIGH  
 Temperature:25.3DEG  
 Operators:DAMIN  
 Test Date:2021-10-12

□ Range: 0 - 90DEG  
 □ Interval: 1.0DEG  
 Test System:EVERFINE GO-2000H\_V1 SYSTEM V2.0.404.7  
 Humidity:65.0%  
 Test Distance:9.880m [K=1.0000]  
 Remarks:

**LUMINANCE LIMITATION CURVES**

Test:U:240.11V I:0.1510A P:34.268W PF:0.9451 Freq:50.00Hz Lamp Flux:3887.21x1 lm		
NAME: BLP36W-12030-CC 4000K	TYPE:36W	WEIGHT:
SPEC.:4000K	DIM.:	SERIAL No.:1
MFR.:	SUR.:	Shielding Angle:



LUMINANCE cd/(m2)		
G (DEG)	C0/180	C90/270
85	761	792
80	903	942
75	1001	1030
70	1081	1101
65	1142	1156
60	1189	1198
55	1223	1231
50	1250	1255
45	1270	1275

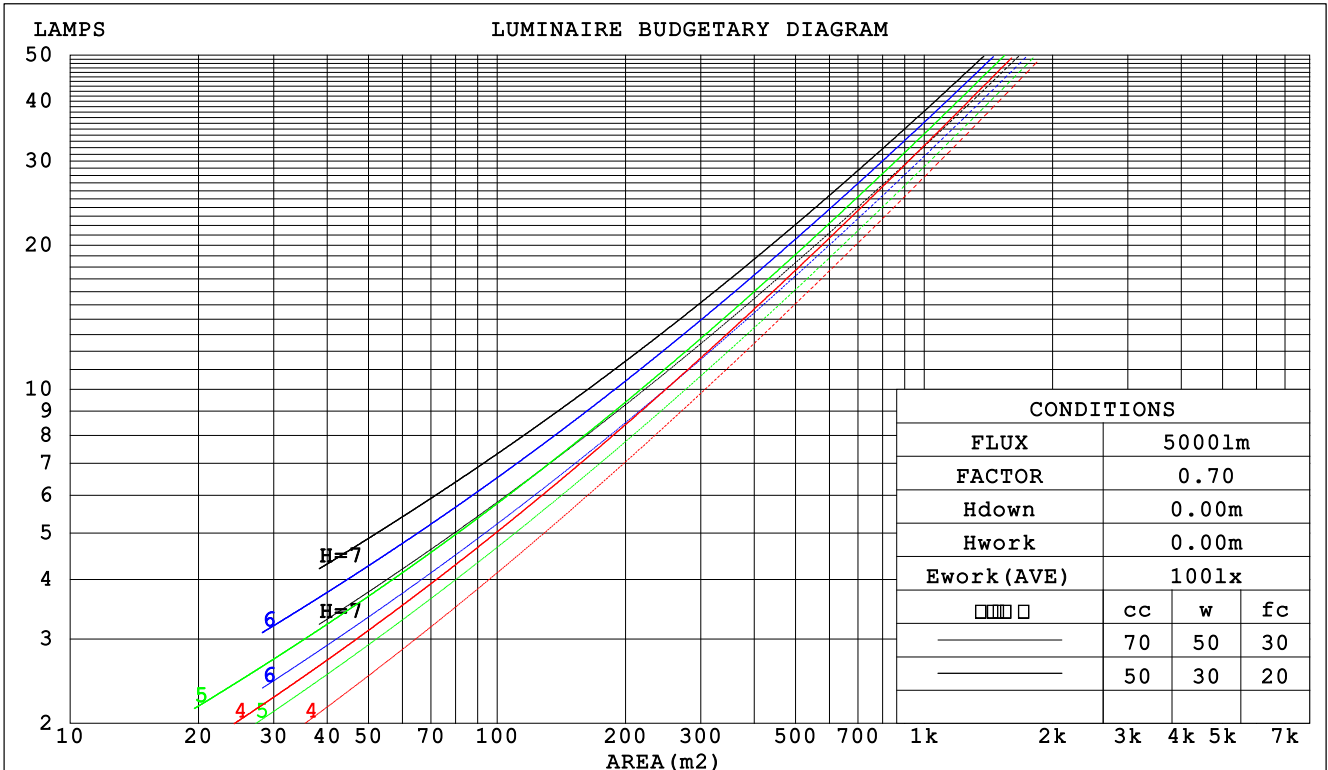
C Range: 0 - 360DEG  
 C Interval: 45.0DEG  
 Test Speed: HIGH  
 Temperature:25.3DEG  
 Operators:DAMIN  
 Test Date:2021-10-12

Range: 0 - 90DEG  
 Interval: 1.0DEG  
 Test System:EVERFINE GO-2000H\_V1 SYSTEM V2.0.404.7  
 Humidity:65.0%  
 Test Distance:9.880m [K=1.0000]  
 Remarks:

CU AND LUMINAIRE BUDGETARY ESTIMATE DIAGRAM

Test:U:240.11V I:0.1510A P:34.268W PF:0.9451 Freq:50.00Hz Lamp Flux:3887.21x1 lm		
NAME: BLP36W-12030-CC 4000K	TYPE:36W	WEIGHT:
SPEC.:4000K	DIM.:	SERIAL No.:1
MFR.:	SUR.:	Shielding Angle:

□cc	80%			70%			50%			30%			10%			0
□w	50%	30%	10%	50%	30%	10%	50%	30%	10%	50%	30%	10%	50%	30%	10%	0
□fc	20%			20%			20%			20%			20%			0
RCR	RCR:Room Cavity Ratio						Coefficients of Utilization(CU)									
0.0	1.19	1.19	1.19	1.16	1.16	1.16	1.11	1.11	1.11	1.06	1.06	1.06	1.02	1.02	1.02	1.00
1.0	1.04	.99	.95	1.01	.97	.94	.97	.94	.91	.93	.90	.88	.90	.87	.85	.83
2.0	.90	.83	.77	.88	.82	.76	.85	.79	.75	.81	.77	.73	.78	.75	.71	.69
3.0	.79	.71	.64	.77	.70	.63	.74	.68	.62	.72	.66	.61	.69	.64	.60	.58
4.0	.70	.61	.54	.69	.60	.54	.66	.59	.53	.64	.57	.52	.61	.56	.52	.49
5.0	.62	.53	.46	.61	.53	.46	.59	.51	.46	.57	.50	.45	.55	.49	.45	.43
6.0	.56	.47	.41	.55	.47	.40	.53	.46	.40	.52	.45	.40	.50	.44	.39	.37
7.0	.51	.42	.36	.50	.42	.36	.48	.41	.35	.47	.40	.35	.46	.39	.35	.33
8.0	.46	.38	.32	.46	.37	.32	.44	.37	.31	.43	.36	.31	.42	.36	.31	.29
9.0	.42	.34	.29	.42	.34	.29	.41	.33	.28	.40	.33	.28	.39	.33	.28	.26
10.0	.39	.31	.26	.39	.31	.26	.38	.31	.26	.37	.30	.26	.36	.30	.25	.24



C Range: 0 - 360DEG  
C Interval: 45.0DEG  
Test Speed: HIGH  
Temperature:25.3DEG  
Operators:DAMIN  
Test Date:2021-10-12

□ Range: 0 - 90DEG  
□ Interval: 1.0DEG  
Test System:EVERFINE GO-2000H\_V1 SYSTEM V2.0.404.7  
Humidity:65.0%  
Test Distance:9.880m [K=1.0000]  
Remarks:

WEC AND CCEC

Test:U:240.11V I:0.1510A P:34.268W PF:0.9451 Freq:50.00Hz Lamp Flux:3887.21x1 lm		
NAME: BLP36W-12030-CC 4000K	TYPE:36W	WEIGHT:
SPEC.:4000K	DIM.:	SERIAL No.:1
MFR.:	SUR.:	Shielding Angle:

<input type="checkbox"/> cc	80%	70%	50%	30%	10%	0
<input type="checkbox"/> w	50% 30% 10%	50% 30% 10%	50% 30% 10%	50% 30% 10%	50% 30% 10%	0
<input type="checkbox"/> fc	20%	20%	20%	20%	20%	0
RCR	RCR:Room Cavity Ratio		Wall Exitance Coefficients (WEC)			
0.0						
1.0	.314 .179 .057	.307 .175 .056	.294 .169 .054	.282 .163 .052	.271 .157 .051	
2.0	.295 .162 .050	.289 .159 .049	.277 .154 .048	.266 .149 .047	.256 .145 .046	
3.0	.273 .145 .043	.267 .143 .043	.257 .139 .042	.247 .135 .042	.238 .132 .041	
4.0	.251 .131 .038	.246 .129 .038	.237 .126 .038	.229 .123 .037	.221 .120 .037	
5.0	.232 .118 .034	.228 .117 .034	.219 .114 .034	.212 .112 .033	.205 .109 .033	
6.0	.215 .108 .031	.211 .107 .031	.204 .104 .030	.197 .102 .030	.191 .100 .030	
7.0	.200 .099 .028	.197 .098 .028	.190 .096 .028	.184 .094 .027	.178 .093 .027	
8.0	.187 .091 .026	.184 .090 .026	.178 .089 .025	.172 .087 .025	.167 .086 .025	
9.0	.175 .085 .024	.172 .084 .024	.167 .083 .023	.162 .081 .023	.157 .080 .023	
10.0	.164 .079 .022	.162 .078 .022	.157 .077 .022	.153 .076 .022	.148 .075 .021	

<input type="checkbox"/> cc	80%	70%	50%	30%	10%	0
<input type="checkbox"/> w	50% 30% 10%	50% 30% 10%	50% 30% 10%	50% 30% 10%	50% 30% 10%	0
<input type="checkbox"/> fc	20%	20%	20%	20%	20%	0
RCR	RCR:Room Cavity Ratio		Ceiling Cavity Exitance Coefficients (CCEC)			
0.0	.190 .190 .190	.163 .163 .163	.111 .111 .111	.064 .064 .064	.020 .020 .020	
1.0	.181 .156 .134	.155 .134 .115	.106 .092 .080	.061 .053 .046	.019 .017 .015	
2.0	.173 .132 .098	.148 .114 .084	.101 .079 .059	.058 .046 .035	.019 .015 .011	
3.0	.165 .114 .074	.141 .099 .064	.097 .069 .045	.056 .040 .027	.018 .013 .009	
4.0	.157 .101 .058	.135 .087 .050	.093 .061 .035	.054 .036 .021	.017 .012 .007	
5.0	.150 .091 .047	.129 .078 .041	.089 .055 .029	.051 .032 .017	.017 .010 .006	
6.0	.143 .082 .039	.123 .071 .034	.085 .050 .024	.049 .029 .014	.016 .010 .005	
7.0	.136 .075 .033	.117 .065 .029	.081 .046 .020	.047 .027 .012	.015 .009 .004	
8.0	.129 .070 .029	.111 .060 .025	.077 .042 .018	.045 .025 .011	.014 .008 .003	
9.0	.123 .065 .025	.106 .056 .022	.074 .039 .016	.043 .023 .009	.014 .008 .003	
10.0	.118 .060 .022	.101 .052 .020	.070 .037 .014	.041 .022 .008	.013 .007 .003	

C Range: 0 - 360DEG  
 C Interval: 45.0DEG  
 Test Speed: HIGH  
 Temperature:25.3DEG  
 Operators:DAMIN  
 Test Date:2021-10-12

Range: 0 - 90DEG  
 Interval: 1.0DEG  
 Test System:EVERFINE GO-2000H\_V1 SYSTEM V2.0.404.7  
 Humidity:65.0%  
 Test Distance:9.880m [K=1.0000]  
 Remarks:

UGR(Unified Glare Rating) Table

Test:U:240.11V I:0.1510A P:34.268W PF:0.9451 Freq:50.00Hz Lamp Flux:3887.21x1 lm										
NAME: BLP36W-12030-CC 4000K					TYPE:36W			WEIGHT:		
SPEC.:4000K					DIM.:			SERIAL No.:1		
MFR.:					SUR.:			Shielding Angle:		
ceiling/cavity	0.7	0.7	0.5	0.5	0.3	0.7	0.7	0.5	0.5	0.3
walls	0.5	0.3	0.5	0.3	0.3	0.5	0.3	0.5	0.3	0.3
working plane	0.2	0.2	0.2	0.2	0.2	0.2	0.2	0.2	0.2	0.2
Room dimensions	Viewed crosswise					Viewed endwise				
x = 2H y = 2H	13.6	15.1	13.8	15.3	15.5	13.6	15.1	13.9	15.3	15.5
3H	15.1	16.5	15.4	16.7	17.0	15.1	16.6	15.4	16.8	17.0
4H	15.7	17.0	16.0	17.3	17.5	15.8	17.1	16.1	17.4	17.6
6H	16.1	17.4	16.4	17.7	17.9	16.2	17.5	16.5	17.8	18.0
8H	16.2	17.5	16.6	17.8	18.1	16.4	17.6	16.7	17.9	18.2
12H	16.3	17.5	16.7	17.8	18.1	16.4	17.6	16.8	17.9	18.2
4H 2H	14.2	15.5	14.5	15.8	16.0	14.2	15.6	14.5	15.8	16.1
3H	15.9	17.1	16.2	17.4	17.7	15.9	17.1	16.3	17.4	17.7
4H	16.6	17.7	17.0	18.0	18.3	16.7	17.8	17.0	18.1	18.4
6H	17.2	18.1	17.6	18.5	18.8	17.3	18.2	17.7	18.6	18.9
8H	17.4	18.3	17.8	18.6	19.0	17.5	18.4	17.9	18.7	19.1
12H	17.5	18.3	17.9	18.7	19.1	17.6	18.4	18.0	18.8	19.2
8H 4H	16.9	17.8	17.3	18.1	18.5	16.9	17.8	17.4	18.2	18.6
6H	17.6	18.3	18.0	18.7	19.2	17.7	18.4	18.1	18.8	19.3
8H	17.9	18.5	18.3	19.0	19.4	18.0	18.6	18.4	19.0	19.5
12H	18.1	18.6	18.5	19.1	19.6	18.2	18.7	18.6	19.2	19.7
12H 4H	16.9	17.7	17.3	18.1	18.5	16.9	17.8	17.4	18.2	18.6
6H	17.7	18.3	18.1	18.7	19.2	17.7	18.4	18.2	18.8	19.3
8H	18.0	18.5	18.4	19.0	19.5	18.1	18.6	18.5	19.1	19.5
Variations with the observer position at spacings:										
S = 1.0H	+ 0.1 / - 0.2					+ 0.1 / - 0.2				
1.5H	+ 0.2 / - 0.3					+ 0.2 / - 0.3				
2.0H	+ 0.2 / - 0.3					+ 0.2 / - 0.3				

CIE Pub.117, 3887 lm Total Lamp Luminous Flux Corrected (8log(F/F0) = 4.7)

C Range: 0 - 360DEG  
 C Interval: 45.0DEG  
 Test Speed: HIGH  
 Temperature:25.3DEG  
 Operators:DAMIN  
 Test Date:2021-10-12

Range: 0 - 90DEG  
 Interval: 1.0DEG  
 Test System:EVERFINE GO-2000H\_V1 SYSTEM V2.0.404.7  
 Humidity:65.0%  
 Test Distance:9.880m [K=1.0000]  
 Remarks:

**UTILIZATION FACTORS TABLE**

Test:U:240.11V I:0.1510A P:34.268W PF:0.9451 Freq:50.00Hz Lamp Flux:3887.21x1 lm		
NAME: BLP36W-12030-CC 4000K	TYPE:36W	WEIGHT:
SPEC.:4000K	DIM.:	SERIAL No.:1
MFR.:	SUR.:	Shielding Angle:

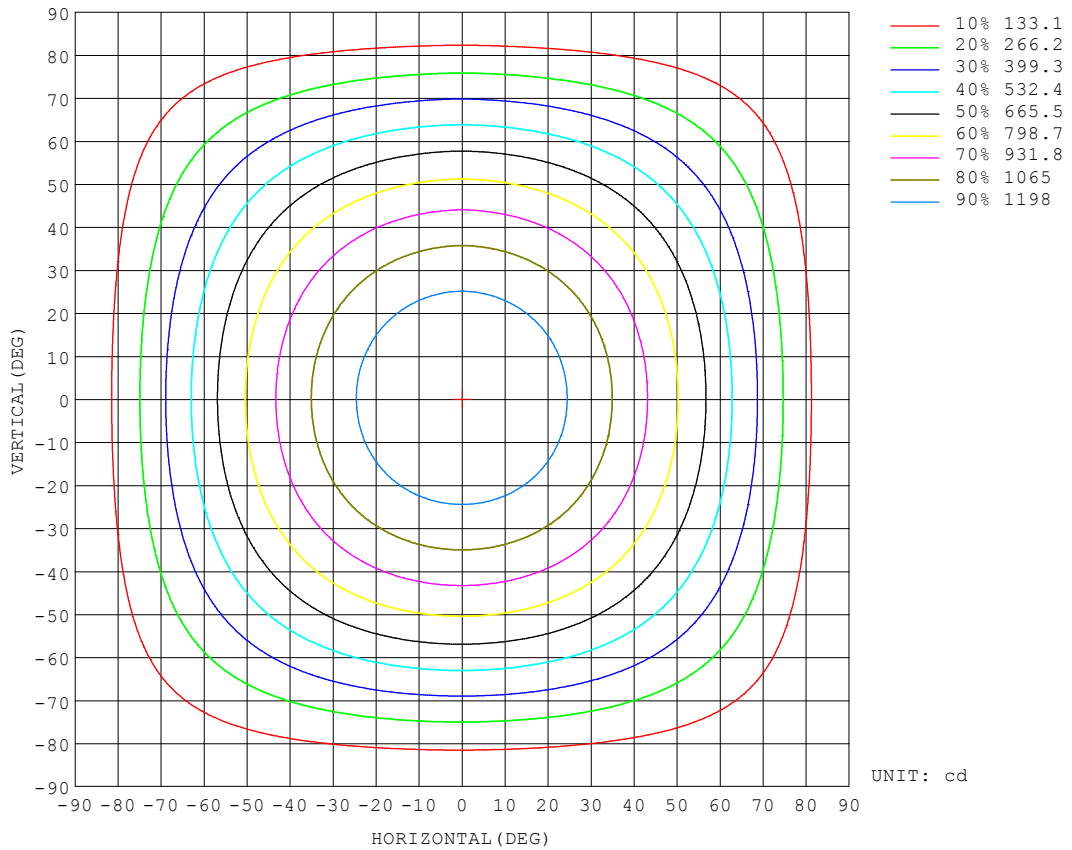
REFLECTANCE										
Ceiling	0.8	0.8	0.8	0.7	0.7	0.7	0.5	0.5	0.5	0
Walls	0.7	0.5	0.3	0.7	0.5	0.3	0.7	0.5	0.3	0
Working plane	0.2	0.2	0.2	0.2	0.2	0.2	0.2	0.2	0.2	0
ROOM INDEX	UTILIZATION FACTORS (PERCENT) $k(RI) \times RCR = 5$									
k = 0.60	57	45	38	56	45	38	55	45	38	32
0.80	67	55	48	66	55	48	64	54	47	40
1.00	76	64	57	74	64	57	72	65	56	49
1.25	83	72	65	81	71	64	79	70	64	56
1.50	88	78	71	86	77	70	83	75	69	61
2.00	95	86	79	93	85	79	89	83	77	69
2.50	99	91	85	97	89	84	93	87	82	73
3.00	102	95	89	100	93	88	96	91	86	78
4.00	106	100	96	104	98	94	99	95	91	83
5.00	108	104	99	106	102	98	101	98	95	86
ROOM INDEX	UF(total)									Direct
According to DIN EN 13032-2 2004			Suspended				SHRNOM = 1.25			

C Range: 0 - 360DEG  
 C Interval: 45.0DEG  
 Test Speed: HIGH  
 Temperature:25.3DEG  
 Operators:DAMIN  
 Test Date:2021-10-12

Range: 0 - 90DEG  
 Interval: 1.0DEG  
 Test System:EVERFINE GO-2000H\_V1 SYSTEM V2.0.404.7  
 Humidity:65.0%  
 Test Distance:9.880m [K=1.0000]  
 Remarks:

**ISOCANDELA DIAGRAM**

Test:U:240.11V I:0.1510A P:34.268W PF:0.9451 Freq:50.00Hz Lamp Flux:3887.21x1 lm		
NAME: BLP36W-12030-CC 4000K	TYPE:36W	WEIGHT:
SPEC.:4000K	DIM.:	SERIAL No.:1
MFR.:	SUR.:	Shielding Angle:



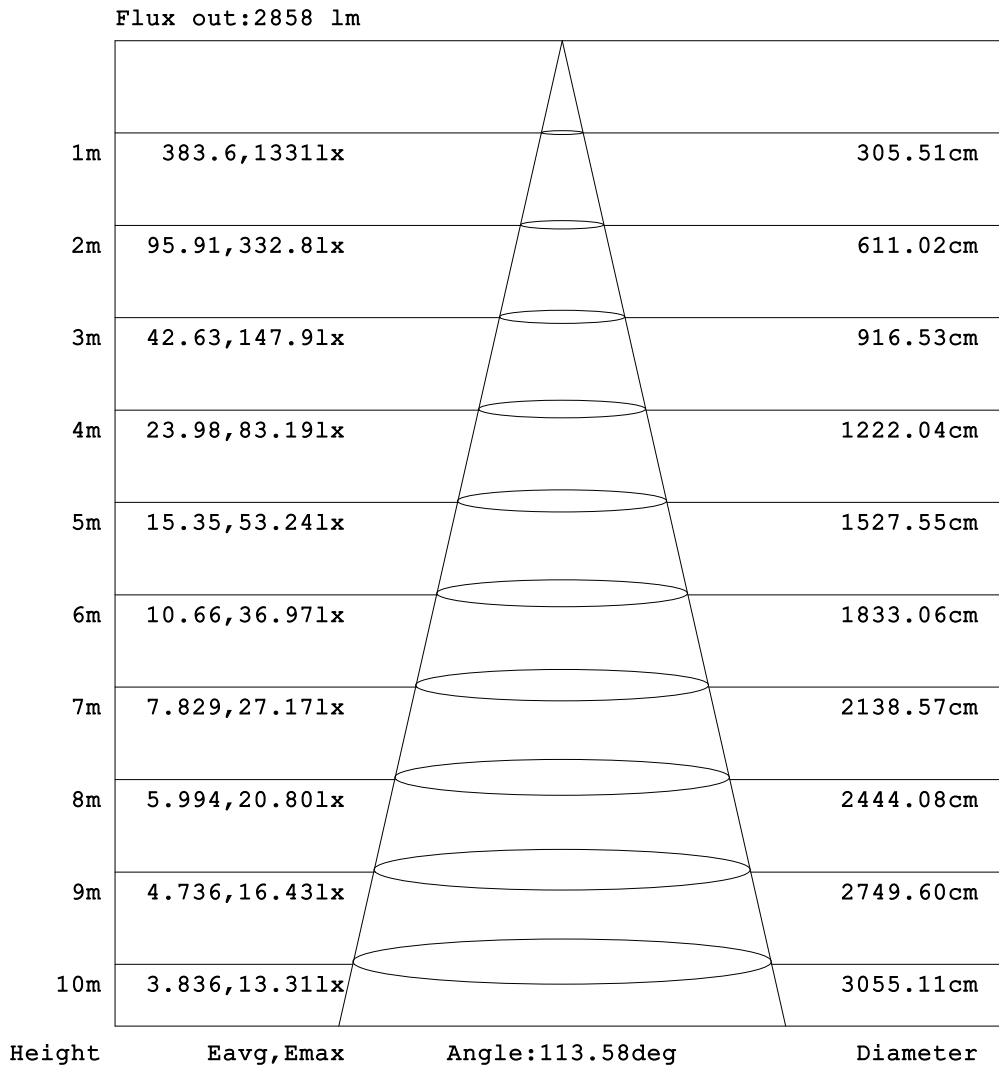
C Range: 0 - 360DEG  
 C Interval: 45.0DEG  
 Test Speed: HIGH  
 Temperature:25.3DEG  
 Operators:DAMIN  
 Test Date:2021-10-12

Range: 0 - 90DEG  
 Interval: 1.0DEG  
 Test System:EVERFINE GO-2000H\_V1 SYSTEM V2.0.404.7  
 Humidity:65.0%  
 Test Distance:9.880m [K=1.0000]  
 Remarks:



**AAI Figure**

Test:U:240.11V I:0.1510A P:34.268W PF:0.9451 Freq:50.00Hz Lamp Flux:3887.21x1 lm		
NAME: BLP36W-12030-CC 4000K	TYPE:36W	WEIGHT:
SPEC.:4000K	DIM.:	SERIAL No.:1
MFR.:	SUR.:	Shielding Angle:



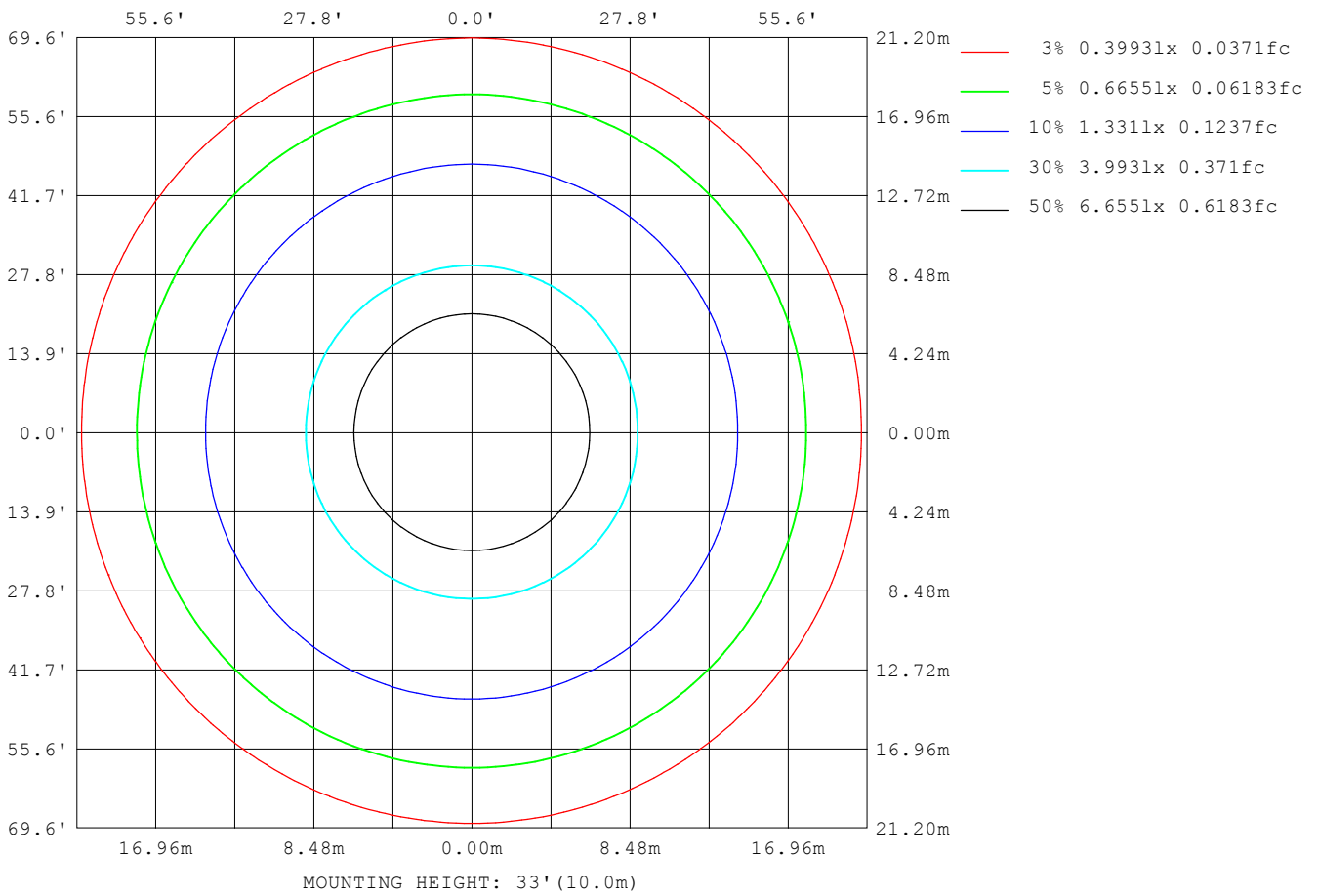
Note:The Curves indicate the illuminated area and the average illumination when the luminaire is at different distance.

C Range: 0 - 360DEG  
 C Interval: 45.0DEG  
 Test Speed: HIGH  
 Temperature:25.3DEG  
 Operators:DAMIN  
 Test Date:2021-10-12

Range: 0 - 90DEG  
 Interval: 1.0DEG  
 Test System:EVERFINE GO-2000H\_V1 SYSTEM V2.0.404.7  
 Humidity:65.0%  
 Test Distance:9.880m [K=1.0000]  
 Remarks:

**ISOLUX DIAGRAM**

Test:U:240.11V I:0.1510A P:34.268W PF:0.9451 Freq:50.00Hz Lamp Flux:3887.21x1 lm		
NAME: BLP36W-12030-CC 4000K	TYPE:36W	WEIGHT:
SPEC.:4000K	DIM.:	SERIAL No.:1
MFR.:	SUR.:	Shielding Angle:



C Range: 0 - 360DEG  
 C Interval: 45.0DEG  
 Test Speed: HIGH  
 Temperature:25.3DEG  
 Operators:DAMIN  
 Test Date:2021-10-12

Range: 0 - 90DEG  
 Interval: 1.0DEG  
 Test System:EVERFINE GO-2000H\_V1 SYSTEM V2.0.404.7  
 Humidity:65.0%  
 Test Distance:9.880m [K=1.0000]  
 Remarks:

**LED Avg.L Report**

Test:U:240.11V I:0.1510A P:34.268W PF:0.9451 Freq:50.00Hz Lamp Flux:3887.21x1 lm		
NAME: BLP36W-12030-CC 4000K	TYPE:36W	WEIGHT:
SPEC.:4000K	DIM.:	SERIAL No.:1
MFR.:	SUR.:	Shielding Angle:

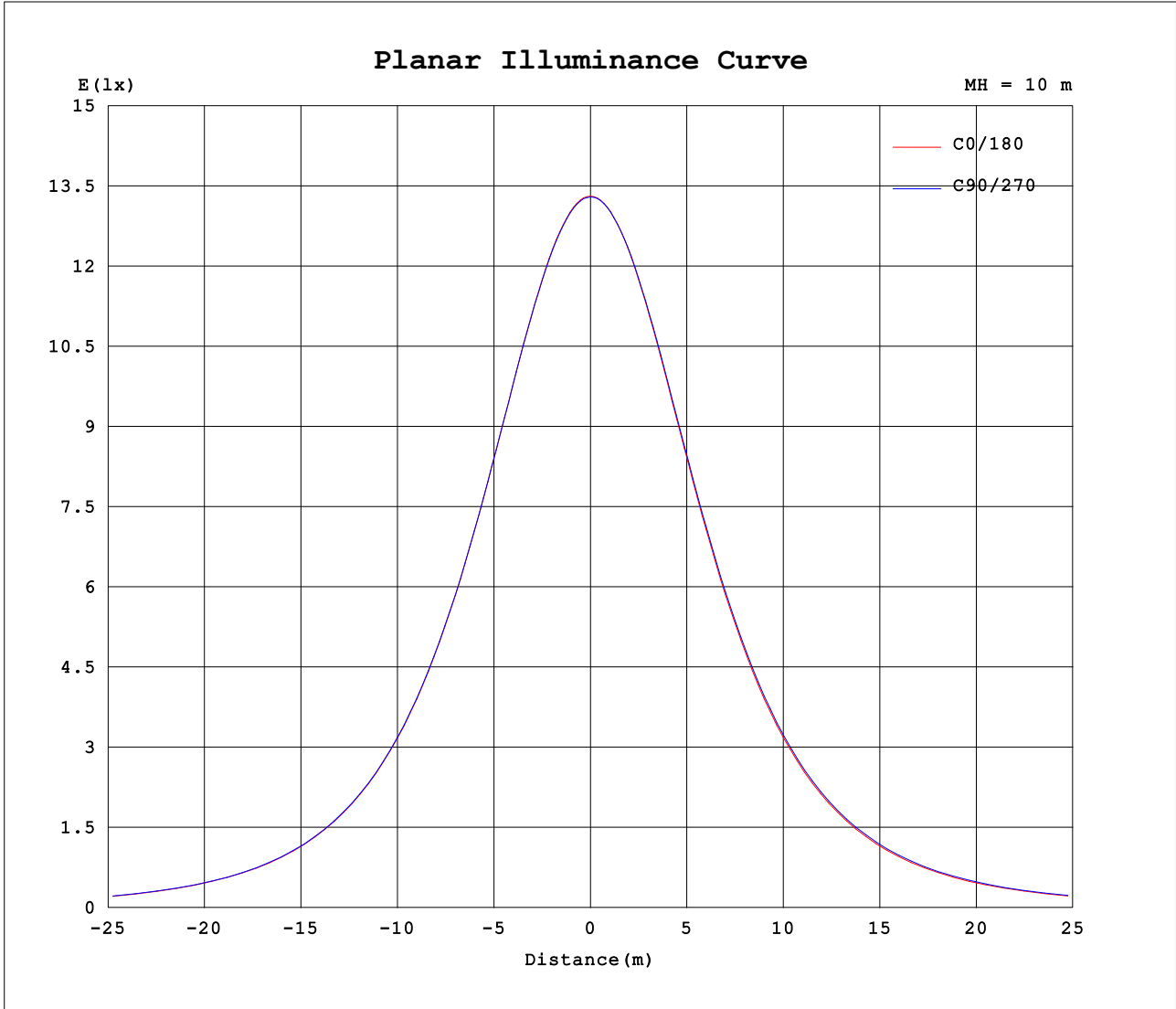
AvgL	cd/m2
L_0~180 (65) av	1147
L_0~180 (75) av	1011
L_0~180 (85) av	786
L_90~270 (65) av	1177
L_90~270 (75) av	1065
L_90~270 (85) av	871
L_45 (65) av	1162
L_45 (75) av	1035
L_45 (85) av	812

Standard: GB/T 29293-2012

C Range: 0 - 360DEG  
 C Interval: 45.0DEG  
 Test Speed: HIGH  
 Temperature:25.3DEG  
 Operators:DAMIN  
 Test Date:2021-10-12

Range: 0 - 90DEG  
 Interval: 1.0DEG  
 Test System:EVERFINE GO-2000H\_V1 SYSTEM V2.0.404.7  
 Humidity:65.0%  
 Test Distance:9.880m [K=1.0000]  
 Remarks:

Planar Illuminance Curve



C Range: 0 - 360DEG  
 C Interval: 45.0DEG  
 Test Speed: HIGH  
 Temperature: 25.3DEG  
 Operators: DAMIN  
 Test Date: 2021-10-12

Range: 0 - 90DEG  
 Interval: 1.0DEG  
 Test System: EVERFINE GO-2000H\_V1 SYSTEM V2.0.404.7  
 Humidity: 65.0%  
 Test Distance: 9.880m [K=1.0000]  
 Remarks:

LUMINOUS DISTRIBUTION INTENSITY DATA

Test:U:240.11V I:0.1510A P:34.268W PF:0.9451 Freq:50.00Hz Lamp Flux:3887.21x1 lm		
NAME: BLP36W-12030-CC 4000K	TYPE:36W	WEIGHT:
SPEC.:4000K	DIM.:	SERIAL No.:1
MFR.:	SUR.:	Shielding Angle:

Table--1

UNIT: cd

C (DEG) □ (DEG)	0	45	90	135	180	225	270	315										
0	1331	1330	1330	1330	1331	1330	1330	1330										
5	1325	1324	1324	1324	1326	1325	1325	1325										
10	1308	1307	1307	1307	1309	1309	1310	1308										
15	1280	1280	1279	1280	1281	1282	1283	1281										
20	1241	1241	1240	1242	1242	1244	1247	1243										
25	1192	1192	1192	1193	1194	1196	1200	1195										
30	1132	1133	1133	1134	1135	1138	1142	1137										
35	1063	1065	1065	1066	1066	1070	1075	1069										
40	985	987	988	988	988	993	999	992										
45	898	901	901	902	901	908	915	907										
50	803	806	807	808	807	814	822	813										
55	702	704	706	706	706	713	722	712										
60	594	597	599	599	598	606	616	605										
65	483	486	488	488	487	496	506	494										
70	370	373	376	376	375	383	395	382										
75	259	262	267	266	264	273	284	271										
80	157	158	164	162	161	170	179	167										
85	66.3	65.6	69.0	68.5	70.8	75.9	82.8	73.2										
90	2.00	2.09	2.11	2.12	2.32	4.09	3.57	2.74										

C Range: 0 - 360DEG  
 C Interval: 45.0DEG  
 Test Speed: HIGH  
 Temperature:25.3DEG  
 Operators:DAMIN  
 Test Date:2021-10-12

□ Range: 0 - 90DEG  
 □ Interval: 1.0DEG  
 Test System:EVERFINE GO-2000H\_V1 SYSTEM V2.0.404.7  
 Humidity:65.0%  
 Test Distance:9.880m [K=1.0000]  
 Remarks: