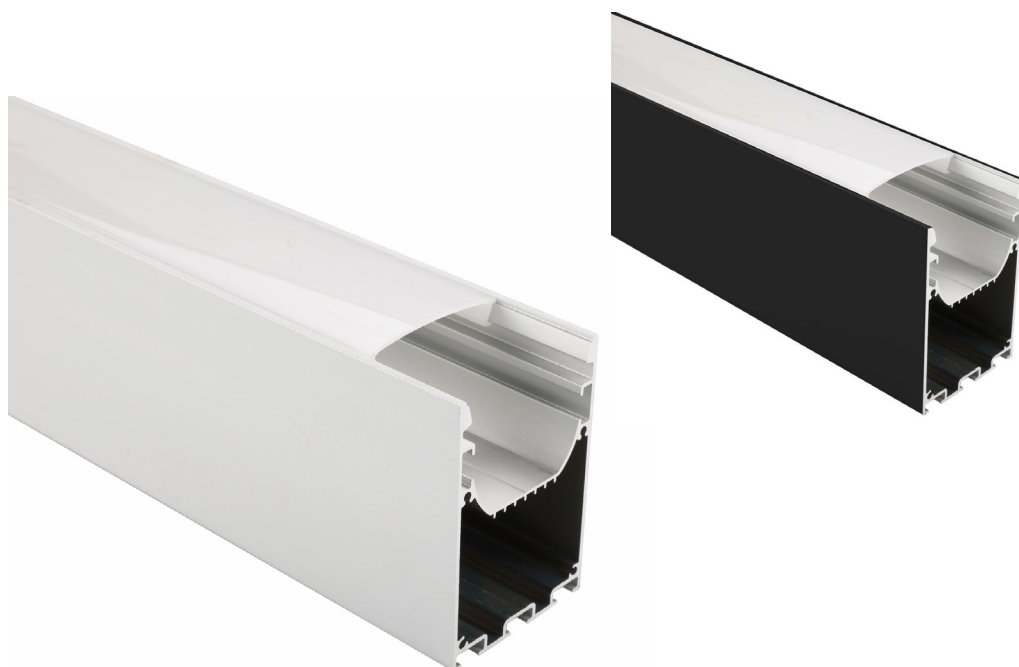




# POWER-LITE®

Certainty at The Speed of Light



## ALUMINIUM

### EXTRUSION

AL-50/70

The POWER-LITE® Aluminium Extrusion is constructed from high-grade 6063-T5 aluminum alloy for optimal heat dissipation, maximising the lifespan of the LED's. Equipped with PC opal matte diffuser that provides uniform light without hot spots. Fixture can be suspended or surface mounted.



#### APPLICATIONS

Office | Retail  
Commercial



☎ 1800 909 306  
🌐 [nedlandsgroup.com.au](http://nedlandsgroup.com.au)  
✉ [sales@nedlandsgroup.com.au](mailto:sales@nedlandsgroup.com.au)

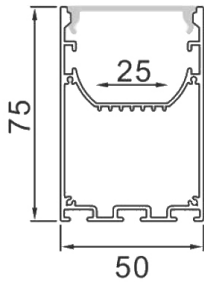


# POWER-LITE®

Certainty at The Speed of Light

## DIMENSIONS

4m Length



### Note:

- End caps, Suspension Kit & Straight Connectors are not included and are sold separately

### Material

6063-T5  
aluminum with  
PC opal matte  
diffuser

### Finish

Anodised

### Compatible Strip

- FLS100WDUAL-NW
- FLS200WDUAL-WW
- FLS200WDUAL-NW

### Lighting source width

25mm

### Carton Qty

1

## PRODUCT

## OPTIONS

## CODE

ALUMINIUM EXTRUSION



Black

White

AL-50/70-B

AL-50/70-W

## ACCESSORIES

## OPTIONS

## CODE

END CAPS



Black

White

AL-50/70-EC-B

AL-50/70-EC-W

2

caps per kit

SUSPENSION KIT



5m Length

AL-50/70-CSK

STRAIGHT  
CONNECTOR



AL-50/70-SC

IP

IP20

