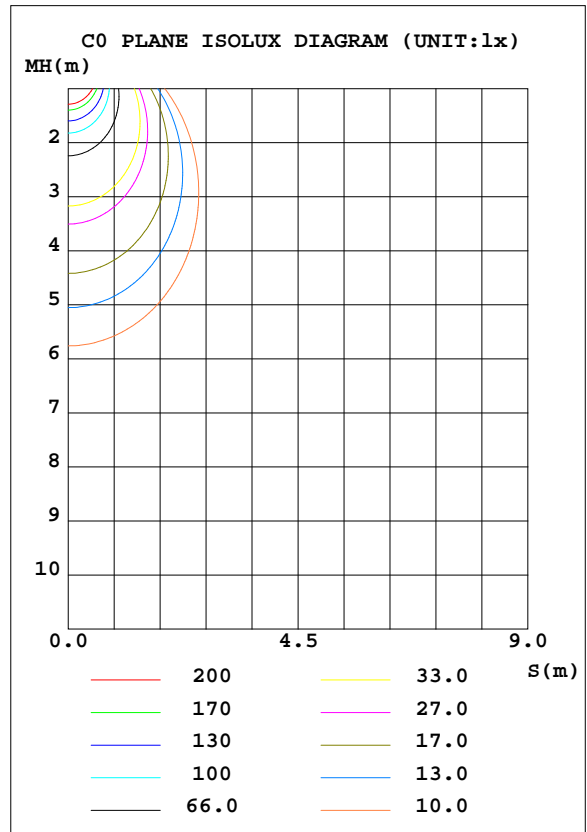
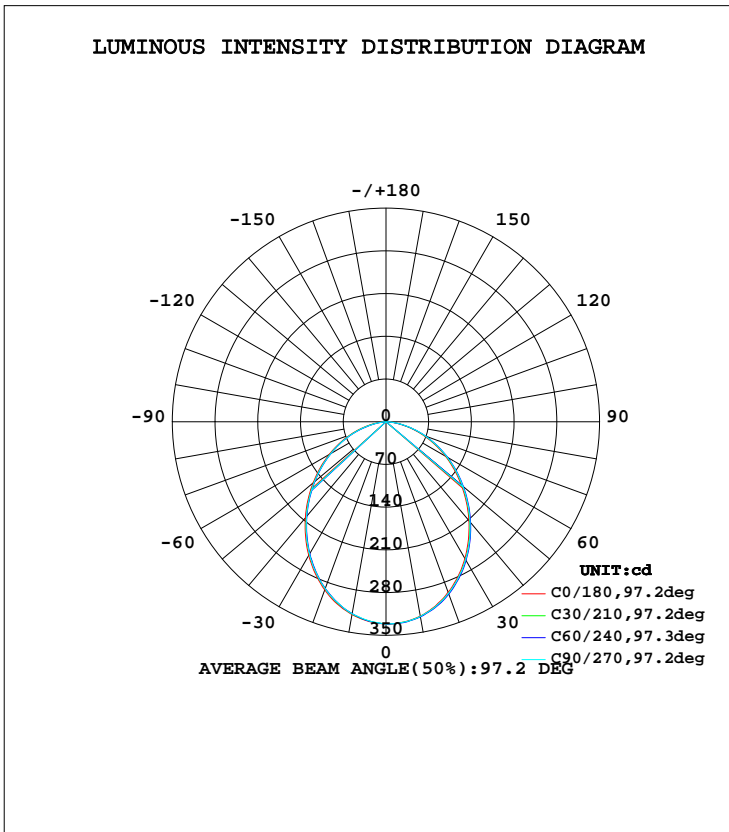


LUMINAIRE PHOTOMETRIC TEST REPORT

Test:U:240.6V I:0.0370A P:8.580W PF:0.9420 Lamp Flux:793.018x1 lm		
NAME: ID8W-CC-F 5700K	TYPE:8W	WEIGHT:
DIM.:	SPEC.:5700K	SERIAL No.:1
MFR.:	SUR.:0.04	PROTECTION ANGLE:

DATA OF LAMP		PHOTOMETRIC DATA Eff: 92.43 lm/W			
MODEL	ID8W-CC-F 5700K	Imax(cd)	331.5	S/MH(C0/180)	1.15
NOMINAL POWER(W)	8	LOR(%)	100.0	S/MH(C90/270)	1.14
RATED VOLTAGE(V)	240	TOTAL FLUX(lm)	793.02	η UP, DN(C0-180)	0.0, 48.8
NOMINAL FLUX(lm)	793.018	CIE CLASS	DIRECT	η UP, DN(C180-360)	0.0, 51.2
LAMPS INSIDE	1	η up(%)	0.0	CIBSE SHR NOM	1.25
TEST VOLTAGE(V)	240.6	η down(%)	100.0	CIBSE SHR MAX	1.30



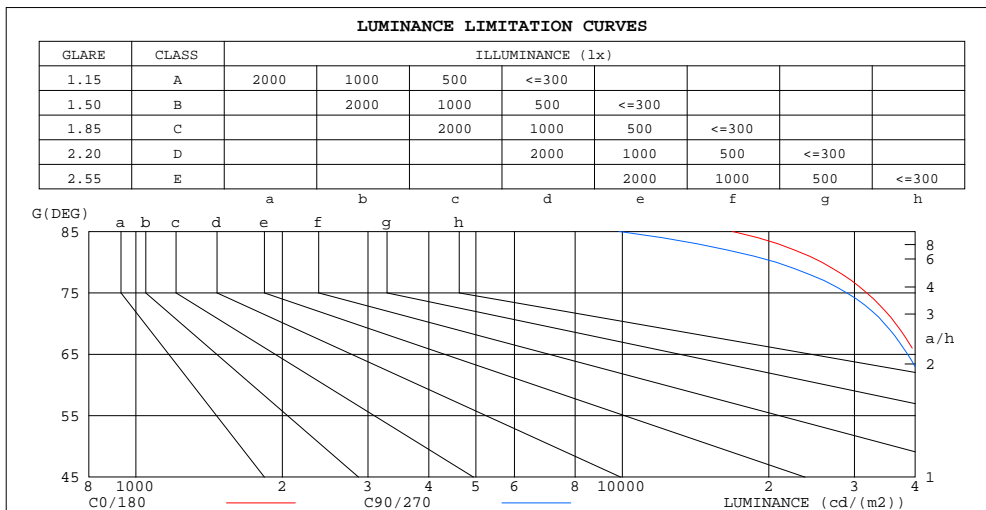
C Range: 0 - 360DEG  
 C Interval: 30.0DEG  
 Test Speed: HIGH  
 Temperature:25.3DEG  
 Operators:DAMIN  
 Test Date:2018-07-04

γ Range: 0 - 90DEG  
 γ Interval: 1.0DEG  
 Test System:EVERFINE GO-2000A\_V1 SYSTEM V2.0.276  
 Humidity:65.0%  
 Test Distance:9.600m [K=1.0000]  
 Remarks:

ZONAL FLUX DIAGRAM  
AND LUMINANCE LIMITATION CURVES

ZONAL FLUX DIAGRAM:

γ	C0	C45	C90	C135	C180	C225	C270	C315	γ	Φ zone	Φ total	#lum,lamp
10	320.8	319.5	319.6	321.1	323.3	324.4	324.1	322.3	0- 10	31.16	31.16	3.93,3.93
20	293.3	291.1	291.2	294.5	297.2	300.0	299.2	296.6	10- 20	87.46	118.6	15,15
30	253.1	250.2	250.6	254.3	258.6	261.6	260.9	257.3	20- 30	127.4	246.0	31,31
40	205.5	202.3	202.7	206.7	211.4	214.8	214.1	210.1	30- 40	145.5	391.5	49.4,49.4
50	156.0	152.9	153.2	156.9	161.2	164.9	164.4	160.5	40- 50	141.6	533.2	67.2,67.2
60	107.8	104.8	104.7	108.2	112.2	115.6	115.4	112.0	50- 60	120.0	653.2	82.4,82.4
70	62.21	59.16	59.15	61.97	65.43	68.53	68.76	65.76	60- 70	85.77	738.9	93.2,93.2
80	22.26	17.95	17.98	21.65	24.16	25.26	26.07	24.93	70- 80	44.79	783.7	98.8,98.8
90	0	0	0	0	0	0.0216	0.1394	0	80- 90	9.288	793.0	100,100
100									90-100			
110									100-110			
120									110-120			
130									120-130			
140									130-140			
150									140-150			
160									150-160			
170									160-170			
180									170-180			
DEG	LUMINOUS INTENSITY:cd									UNIT:lm		



LUMINANCE cd/(m2)		
G(DEG)	C0/180	C90/270
85	16843	9851
80	25703	20703
75	31797	28924
70	36465	34583
65	40148	38579
60	43232	41876
55	46031	44840
50	48653	47661
45	51269	50272

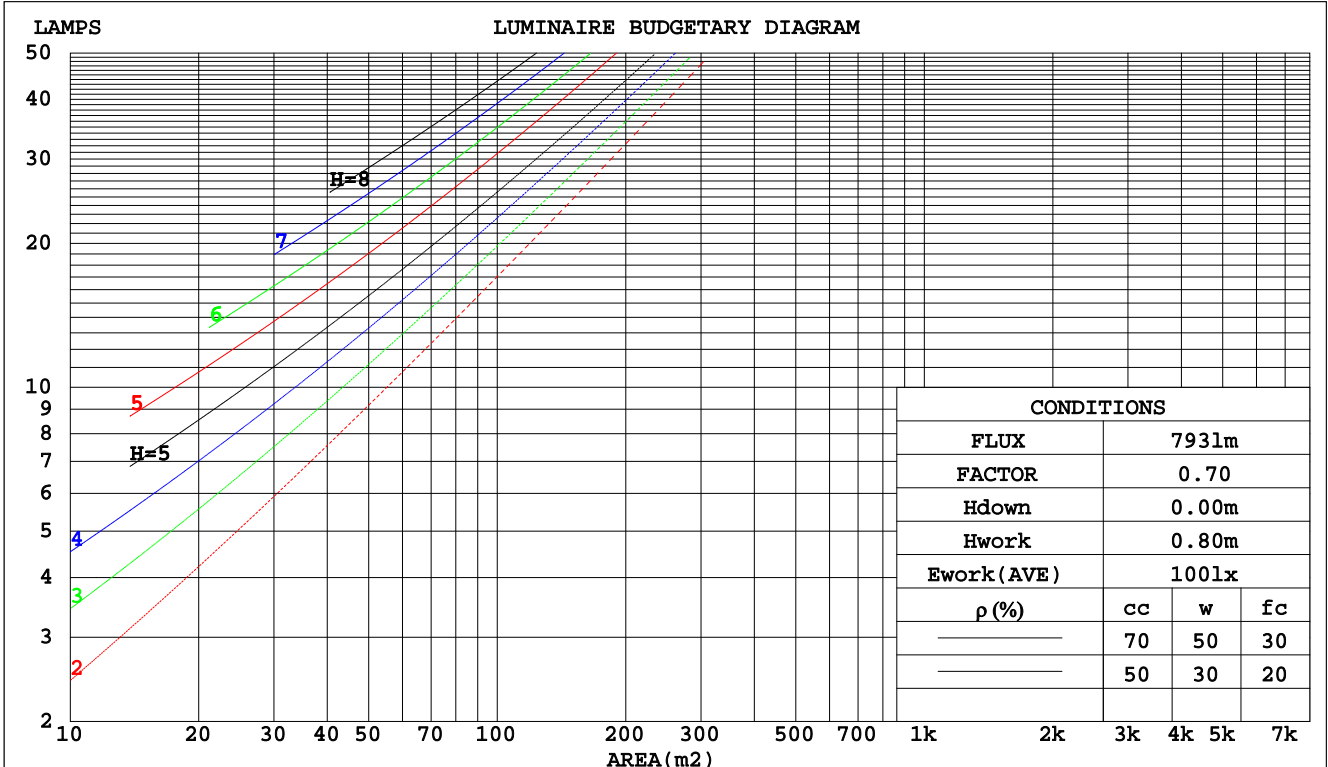
C Range: 0 - 360DEG  
C Interval: 30.0DEG  
Test Speed: HIGH  
Temperature:25.3DEG  
Operators:DAMIN  
Test Date:2018-07-04

γ Range: 0 - 90DEG  
γ Interval: 1.0DEG  
Test System:EVERFINE GO-2000A\_V1 SYSTEM V2.0.276  
Humidity:65.0%  
Test Distance:9.600m [K=1.0000]  
Remarks:

CU AND LUMINAIRE BUDGETARY ESTIMATE DIAGRAM

Test:U:240.6V I:0.0370A P:8.580W PF:0.9420 Lamp Flux:793.018x1 lm		
NAME: ID8W-CC-F 5700K	TYPE:8W	WEIGHT:
DIM.:	SPEC.:5700K	SERIAL No.:1
MFR.:	SUR.:0.04	PROTECTION ANGLE:

pcc	80%			70%			50%			30%			10%			0
	50%	30%	10%	50%	30%	10%	50%	30%	10%	50%	30%	10%	50%	30%	10%	0
pw																0
pfc	20%			20%			20%			20%			20%			0
RCR	RCR:Room Cavity Ratio															
	Coefficients of Utilization(CU)															
0.0	1.19	1.19	1.19	1.16	1.16	1.16	1.11	1.11	1.11	1.06	1.06	1.06	1.02	1.02	1.02	.00
1.0	1.05	1.01	.97	1.03	.99	.96	.99	.96	.93	.95	.92	.90	.91	.89	.87	.85
2.0	.92	.86	.80	.90	.84	.79	.87	.82	.77	.84	.79	.76	.81	.77	.74	.72
3.0	.81	.74	.67	.80	.73	.67	.77	.71	.66	.74	.69	.65	.72	.67	.63	.61
4.0	.73	.64	.58	.71	.63	.57	.69	.62	.56	.66	.61	.56	.64	.59	.55	.53
5.0	.65	.56	.50	.64	.56	.50	.62	.55	.49	.60	.54	.49	.58	.53	.48	.46
6.0	.59	.50	.44	.58	.50	.44	.56	.49	.43	.54	.48	.43	.53	.47	.43	.41
7.0	.54	.45	.39	.53	.45	.39	.51	.44	.39	.50	.43	.38	.48	.43	.38	.36
8.0	.49	.41	.35	.48	.40	.35	.47	.40	.35	.46	.39	.35	.45	.39	.34	.32
9.0	.45	.37	.32	.45	.37	.32	.43	.36	.31	.42	.36	.31	.41	.35	.31	.29
10.0	.42	.34	.29	.41	.34	.29	.40	.33	.29	.39	.33	.29	.38	.33	.28	.27



C Range: 0 - 360DEG  
 C Interval: 30.0DEG  
 Test Speed: HIGH  
 Temperature:25.3DEG  
 Operators:DAMIN  
 Test Date:2018-07-04

γ Range: 0 - 90DEG  
 γ Interval: 1.0DEG  
 Test System:EVERFINE GO-2000A\_V1 SYSTEM V2.0.276  
 Humidity:65.0%  
 Test Distance:9.600m [K=1.0000]  
 Remarks:

WEC AND CCEC

Test:U:240.6V I:0.0370A P:8.580W PF:0.9420 Lamp Flux:793.018x1 lm		
NAME: ID8W-CC-F 5700K	TYPE:8W	WEIGHT:
DIM.:	SPEC.:5700K	SERIAL No.:1
MFR.:	SUR.:0.04	PROTECTION ANGLE:

ρcc	80%			70%			50%			30%			10%			0
ρw	50%	30%	10%	50%	30%	10%	50%	30%	10%	50%	30%	10%	50%	30%	10%	0
ρfc	20%			20%			20%			20%			20%			0
RCR	RCR:Room Cavity Ratio						Wall Exitance Coefficients(WEC)									
0.0																
1.0	.288	.164	.052	.281	.161	.051	.268	.154	.049	.256	.148	.047	.245	.142	.046	
2.0	.275	.151	.046	.269	.148	.046	.257	.143	.044	.247	.138	.043	.237	.134	.042	
3.0	.256	.136	.041	.251	.134	.040	.241	.130	.040	.231	.127	.039	.223	.123	.038	
4.0	.238	.124	.036	.233	.122	.036	.224	.119	.036	.216	.116	.035	.208	.113	.034	
5.0	.221	.113	.033	.217	.111	.032	.209	.109	.032	.201	.106	.032	.195	.104	.031	
6.0	.206	.103	.030	.202	.102	.029	.195	.100	.029	.188	.098	.029	.182	.096	.028	
7.0	.192	.095	.027	.189	.094	.027	.183	.092	.027	.177	.091	.026	.171	.089	.026	
8.0	.180	.088	.025	.177	.087	.025	.171	.086	.024	.166	.084	.024	.161	.083	.024	
9.0	.169	.082	.023	.166	.081	.023	.161	.080	.023	.157	.078	.022	.152	.077	.022	
10.0	.159	.076	.021	.157	.076	.021	.152	.075	.021	.148	.073	.021	.144	.072	.021	

ρcc	80%			70%			50%			30%			10%			0
ρw	50%	30%	10%	50%	30%	10%	50%	30%	10%	50%	30%	10%	50%	30%	10%	0
ρfc	20%			20%			20%			20%			20%			0
RCR	RCR:Room Cavity Ratio						Ceiling Cavity Exitance Coefficients(CCEC)									
0.0	.190	.190	.190	.163	.163	.163	.111	.111	.111	.064	.064	.064	.020	.020	.020	
1.0	.179	.156	.136	.153	.134	.117	.105	.092	.081	.060	.053	.047	.019	.017	.015	
2.0	.170	.132	.100	.146	.114	.086	.100	.079	.060	.058	.046	.035	.018	.015	.012	
3.0	.162	.114	.076	.139	.099	.066	.095	.068	.046	.055	.040	.027	.018	.013	.009	
4.0	.154	.101	.060	.132	.087	.052	.091	.061	.037	.053	.036	.022	.017	.012	.007	
5.0	.147	.090	.049	.126	.078	.042	.087	.055	.030	.050	.032	.018	.016	.010	.006	
6.0	.140	.082	.040	.120	.071	.035	.083	.050	.025	.048	.029	.015	.015	.010	.005	
7.0	.133	.075	.034	.114	.065	.030	.079	.045	.021	.046	.027	.013	.015	.009	.004	
8.0	.127	.069	.029	.109	.060	.026	.075	.042	.018	.044	.025	.011	.014	.008	.004	
9.0	.121	.064	.026	.104	.056	.022	.072	.039	.016	.042	.023	.010	.014	.008	.003	
10.0	.115	.060	.023	.099	.052	.020	.069	.037	.014	.040	.022	.008	.013	.007	.003	

C Range: 0 - 360DEG  
 C Interval: 30.0DEG  
 Test Speed: HIGH  
 Temperature:25.3DEG  
 Operators:DAMIN  
 Test Date:2018-07-04

γ Range: 0 - 90DEG  
 γ Interval: 1.0DEG  
 Test System:EVERFINE GO-2000A\_V1 SYSTEM V2.0.276  
 Humidity:65.0%  
 Test Distance:9.600m [K=1.0000]  
 Remarks:

Uncorrected UGR Table

Test:U:240.6V I:0.0370A P:8.580W PF:0.9420 Lamp Flux:793.018x1 lm										
NAME: ID8W-CC-F 5700K					TYPE:8W			WEIGHT:		
DIM.:					SPEC.:5700K			SERIAL No.:1		
MFR.:					SUR.:0.04			PROTECTION ANGLE:		
ceiling/cavity	0.7	0.7	0.5	0.5	0.3	0.7	0.7	0.5	0.5	0.3
walls	0.5	0.3	0.5	0.3	0.3	0.5	0.3	0.5	0.3	0.3
working plane	0.2	0.2	0.2	0.2	0.2	0.2	0.2	0.2	0.2	0.2
Room dimensions	Viewed crosswise					Viewed endwise				
x = 2H y = 2H	25.8	27.3	26.1	27.5	27.7	25.7	27.2	26.0	27.4	27.6
3H	27.1	28.5	27.4	28.7	28.9	26.9	28.3	27.2	28.5	28.7
4H	27.6	28.8	27.9	29.1	29.3	27.3	28.6	27.6	28.9	29.1
6H	27.8	29.0	28.2	29.3	29.6	27.5	28.7	27.9	29.0	29.3
8H	27.9	29.1	28.2	29.3	29.6	27.5	28.7	27.9	29.0	29.3
12H	27.9	29.0	28.3	29.3	29.6	27.5	28.6	27.9	28.9	29.2
4H 2H	26.3	27.6	26.6	27.9	28.1	26.2	27.5	26.5	27.8	28.0
3H	27.8	28.9	28.1	29.2	29.5	27.6	28.7	28.0	29.0	29.3
4H	28.3	29.4	28.7	29.7	30.0	28.1	29.1	28.5	29.4	29.8
6H	28.7	29.6	29.1	30.0	30.3	28.4	29.3	28.8	29.6	30.0
8H	28.8	29.6	29.2	30.0	30.4	28.4	29.3	28.8	29.6	30.0
12H	28.8	29.6	29.3	30.0	30.4	28.4	29.2	28.8	29.6	30.0
8H 4H	28.5	29.3	28.9	29.7	30.1	28.3	29.1	28.7	29.5	29.9
6H	28.9	29.6	29.4	30.0	30.5	28.6	29.3	29.1	29.7	30.1
8H	29.1	29.7	29.5	30.1	30.6	28.7	29.3	29.1	29.7	30.2
12H	29.2	29.7	29.6	30.1	30.6	28.7	29.2	29.2	29.7	30.1
12H 4H	28.5	29.2	28.9	29.6	30.0	28.3	29.0	28.7	29.4	29.8
6H	28.9	29.6	29.4	30.0	30.4	28.6	29.2	29.1	29.7	30.1
8H	29.1	29.6	29.6	30.1	30.5	28.7	29.2	29.2	29.7	30.1
Variations with the observer position at spacings:										
S = 1.0H	+ 0.2 / - 0.3					+ 0.2 / - 0.3				
1.5H	+ 0.1 / - 0.3					+ 0.1 / - 0.3				
2.0H	+ 0.3 / - 0.3					+ 0.4 / - 0.3				

CIE Pub.117 Corrected 793.0 lm Total Lamp Luminous Flux. (8log(F/F0) = -0.8)

C Range: 0 - 360DEG  
 C Interval: 30.0DEG  
 Test Speed: HIGH  
 Temperature:25.3DEG  
 Operators:DAMIN  
 Test Date:2018-07-04

γ Range: 0 - 90DEG  
 γ Interval: 1.0DEG  
 Test System:EVERFINE GO-2000A\_V1 SYSTEM V2.0.276  
 Humidity:65.0%  
 Test Distance:9.600m [K=1.0000]  
 Remarks:

UTILIZATION FACTORS TABLE

Test:U:240.6V I:0.0370A P:8.580W PF:0.9420 Lamp Flux:793.018x1 lm		
NAME: ID8W-CC-F 5700K	TYPE:8W	WEIGHT:
DIM.:	SPEC.:5700K	SERIAL No.:1
MFR.:	SUR.:0.04	PROTECTION ANGLE:

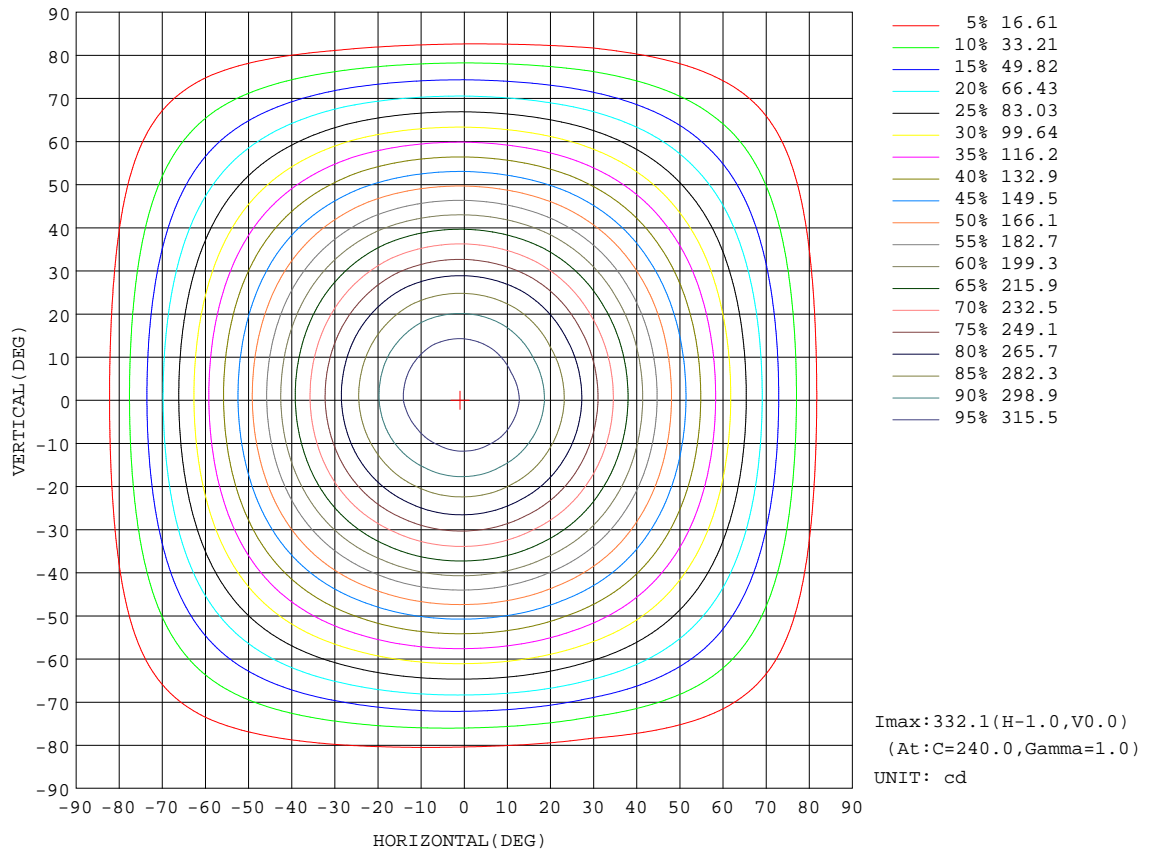
REFLECTANCE										
Ceiling	0.8	0.8	0.8	0.7	0.7	0.7	0.5	0.5	0.5	0
Walls	0.7	0.5	0.3	0.7	0.5	0.3	0.7	0.5	0.3	0
Working plane	0.2	0.2	0.2	0.2	0.2	0.2	0.2	0.2	0.2	0
ROOM INDEX	UTILIZATION FACTORS(PERCENT) $k(RI) \times RCR = 5$									
k = 0.60	60	49	42	60	49	42	58	48	42	36
0.80	70	59	52	69	59	52	68	58	52	45
1.00	79	68	61	77	67	61	75	69	60	53
1.25	85	76	69	84	75	68	81	73	68	61
1.50	90	81	74	89	80	74	86	78	73	66
2.00	97	89	83	95	88	82	92	85	80	73
2.50	100	93	87	98	92	87	95	89	85	77
3.00	104	97	92	101	96	91	97	93	89	81
4.00	107	102	98	105	100	96	101	97	94	85
5.00	110	105	101	107	103	100	103	100	97	88
ROOM INDEX	UF(total)									Direct
According to DIN EN 13032-2 2004			Suspended				SHRNOM = 1.25			

C Range: 0 - 360DEG  
 C Interval: 30.0DEG  
 Test Speed: HIGH  
 Temperature:25.3DEG  
 Operators:DAMIN  
 Test Date:2018-07-04

$\gamma$  Range: 0 - 90DEG  
 $\gamma$  Interval: 1.0DEG  
 Test System:EVERFINE GO-2000A\_V1 SYSTEM V2.0.276  
 Humidity:65.0%  
 Test Distance:9.600m [K=1.0000]  
 Remarks:

ISOCANDELA DIAGRAM

Test:U:240.6V I:0.0370A P:8.580W PF:0.9420 Lamp Flux:793.018x1 lm		
NAME: ID8W-CC-F 5700K	TYPE:8W	WEIGHT:
DIM.:	SPEC.:5700K	SERIAL No.:1
MFR.:	SUR.:0.04	PROTECTION ANGLE:

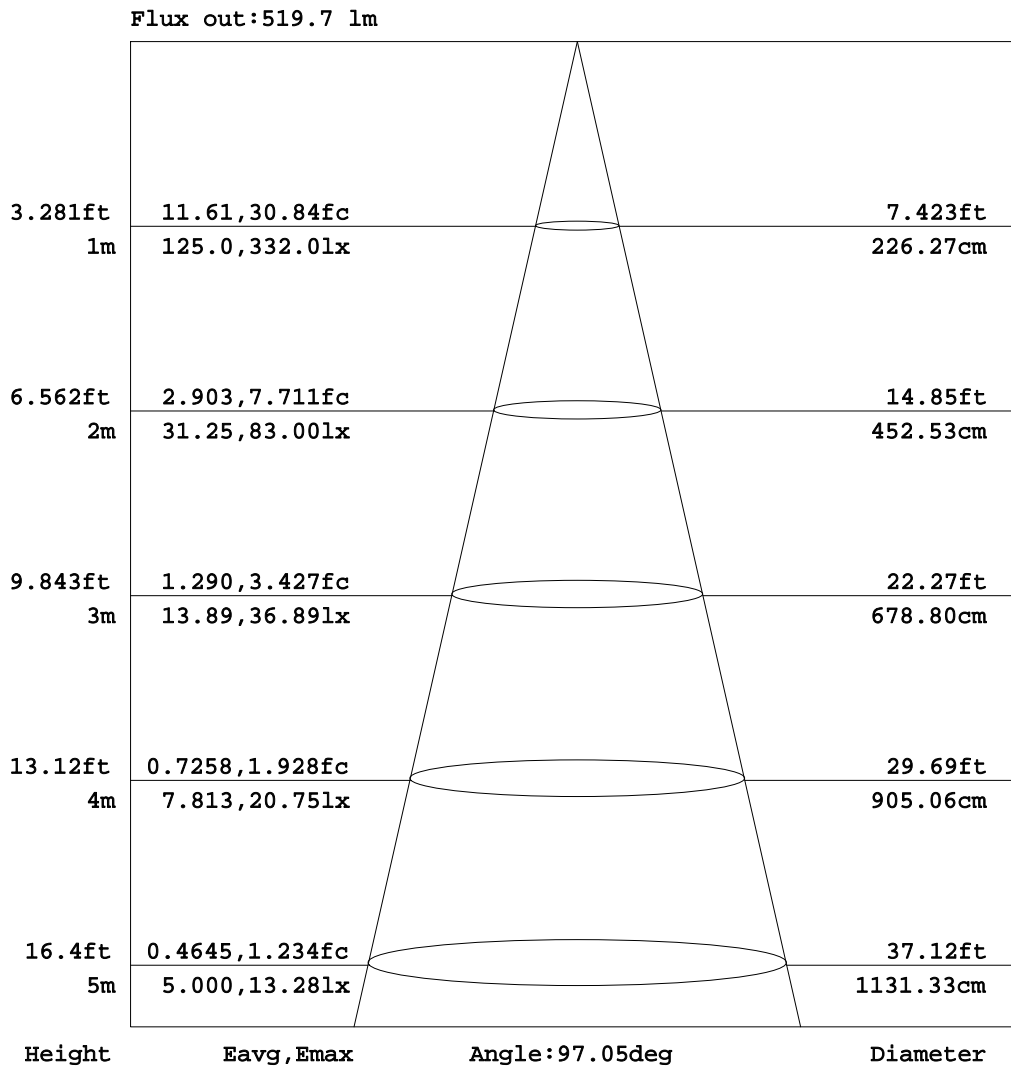


C Range: 0 - 360DEG  
 C Interval: 30.0DEG  
 Test Speed: HIGH  
 Temperature: 25.3DEG  
 Operators: DAMIN  
 Test Date: 2018-07-04

γ Range: 0 - 90DEG  
 γ Interval: 1.0DEG  
 Test System: EVERFINE GO-2000A\_V1 SYSTEM V2.0.276  
 Humidity: 65.0%  
 Test Distance: 9.600m [K=1.0000]  
 Remarks:

AAI Figure

Test:U:240.6V I:0.0370A P:8.580W PF:0.9420 Lamp Flux:793.018x1 lm		
NAME: ID8W-CC-F 5700K	TYPE:8W	WEIGHT:
DIM.:	SPEC.:5700K	SERIAL No.:1
MFR.:	SUR.:0.04	PROTECTION ANGLE:



Note:The Curves indicate the illuminated area and the average illumination when the luminaire is at different distance.

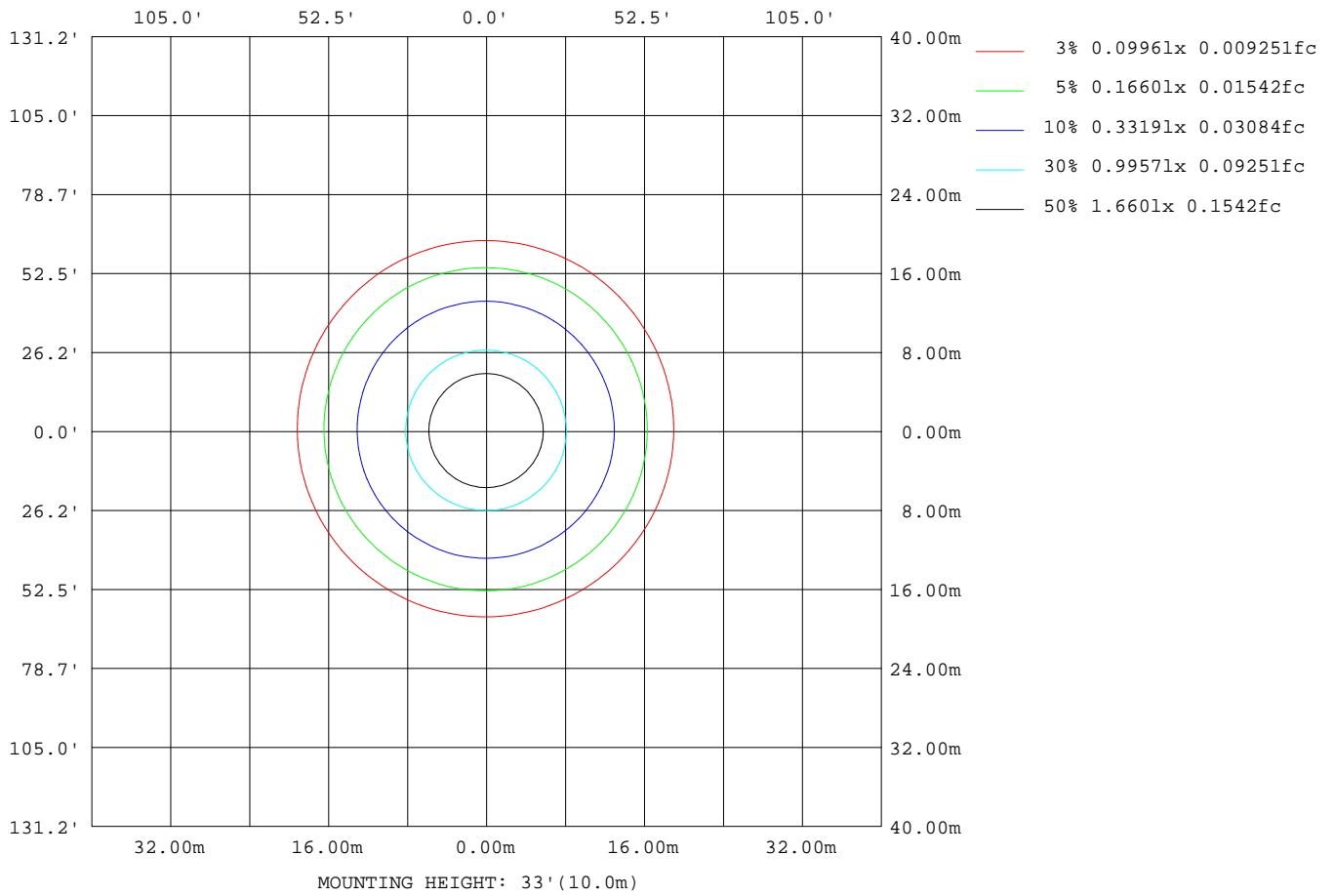
C Range: 0 - 360DEG  
 C Interval: 30.0DEG  
 Test Speed: HIGH  
 Temperature:25.3DEG  
 Operators:DAMIN  
 Test Date:2018-07-04

γ Range: 0 - 90DEG  
 γ Interval: 1.0DEG  
 Test System:EVERFINE GO-2000A\_V1 SYSTEM V2.0.276  
 Humidity:65.0%  
 Test Distance:9.600m [K=1.0000]  
 Remarks:



**ISOLUX DIAGRAM**

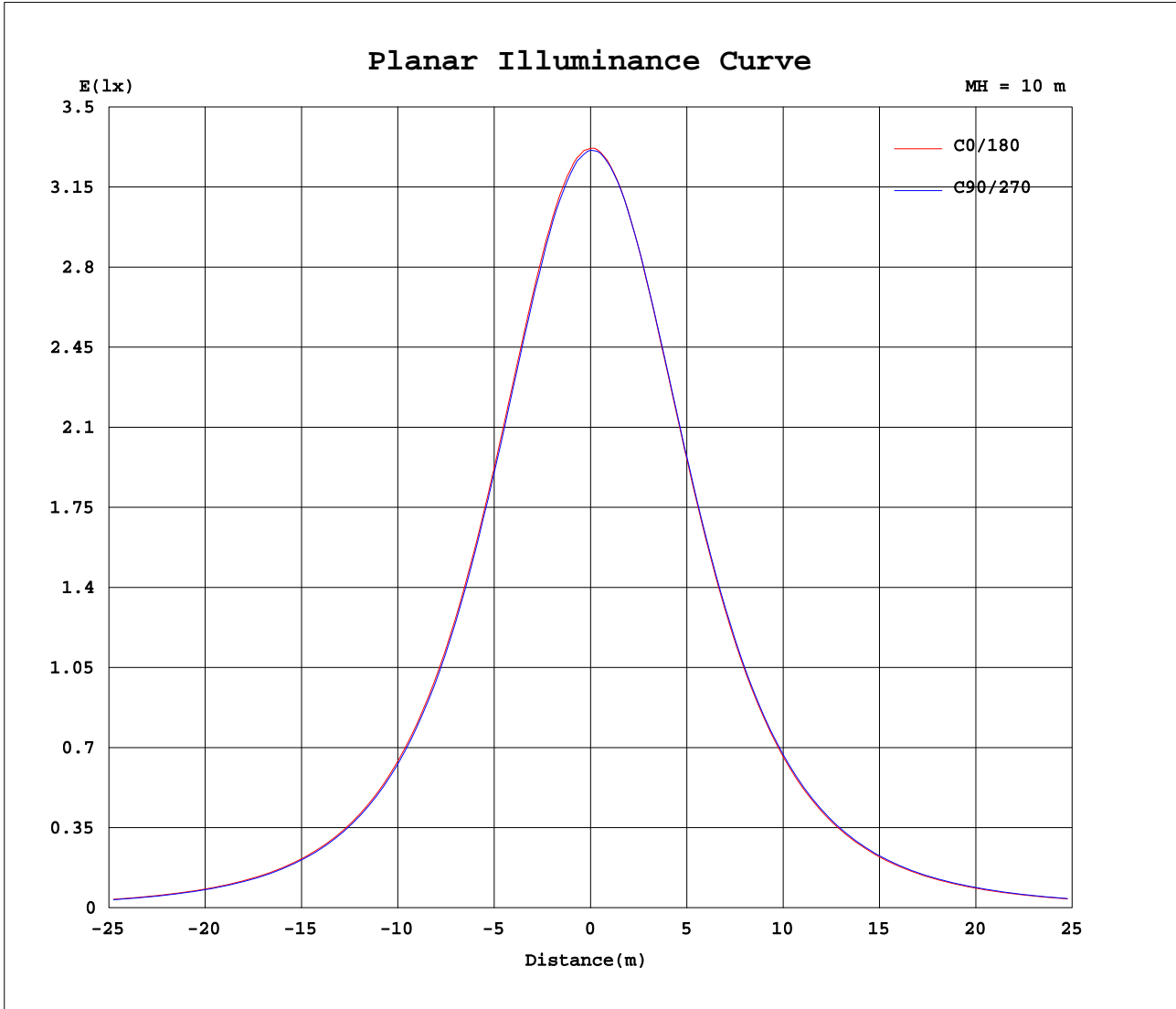
Test:U:240.6V I:0.0370A P:8.580W PF:0.9420 Lamp Flux:793.018x1 lm		
NAME: ID8W-CC-F 5700K	TYPE:8W	WEIGHT:
DIM.:	SPEC.:5700K	SERIAL No.:1
MFR.:	SUR.:0.04	PROTECTION ANGLE:



C Range: 0 - 360DEG  
 C Interval: 30.0DEG  
 Test Speed: HIGH  
 Temperature:25.3DEG  
 Operators:DAMIN  
 Test Date:2018-07-04

γ Range: 0 - 90DEG  
 γ Interval: 1.0DEG  
 Test System:EVERFINE GO-2000A\_V1 SYSTEM V2.0.276  
 Humidity:65.0%  
 Test Distance:9.600m [K=1.0000]  
 Remarks:

Planar Illuminance Curve



C Range: 0 - 360DEG  
 C Interval: 30.0DEG  
 Test Speed: HIGH  
 Temperature: 25.3DEG  
 Operators: DAMIN  
 Test Date: 2018-07-04

$\gamma$  Range: 0 - 90DEG  
 $\gamma$  Interval: 1.0DEG  
 Test System: EVERFINE GO-2000A\_V1 SYSTEM V2.0.276  
 Humidity: 65.0%  
 Test Distance: 9.600m [K=1.0000]  
 Remarks:

