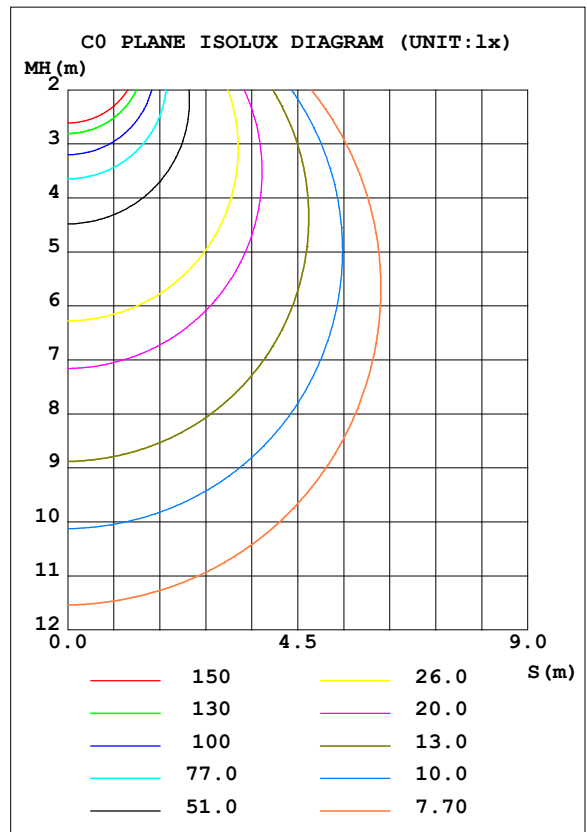
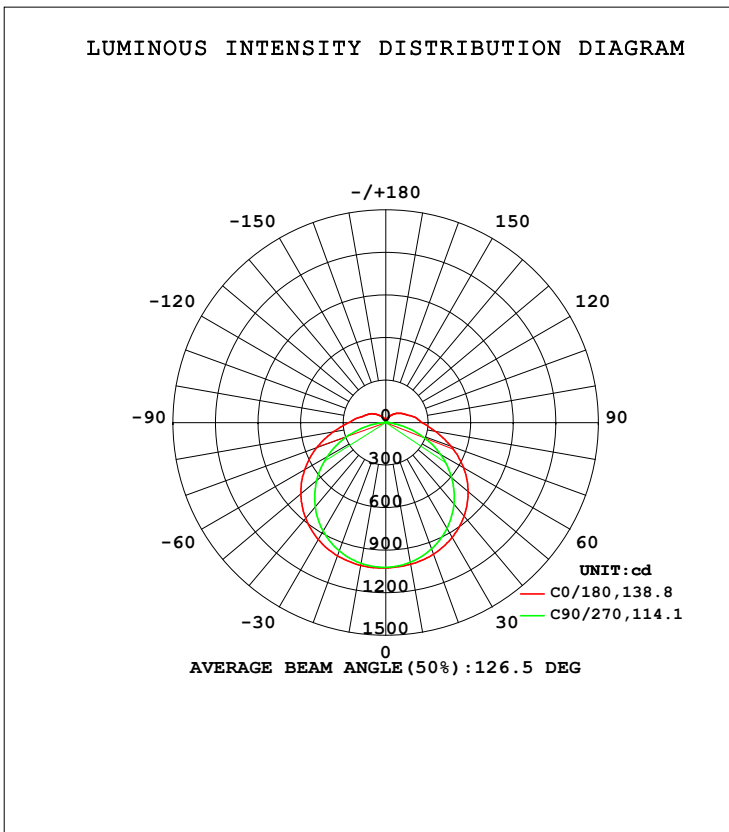


LUMINAIRE PHOTOMETRIC TEST REPORT

Test:U:240.27V I:0.1626A P:37.399W PF:0.9575 Freq:50.00Hz Lamp Flux:4013.06x1 lm		
NAME: WBB-38W-CC 5700K	TYPE:38W	WEIGHT:
SPEC.:5700K	DIM.:	SERIAL No.:1
MFR.:	SUR.:	Shielding Angle:

DATA OF LAMP		PHOTOMETRIC DATA Eff: 107.30 lm/W			
MODEL	WBB-38W-CC 5700K	Imax (cd)	1026	S/MH (C0/180)	1.36
NOMINAL POWER (W)	38	LOR (%)	100.0	S/MH (C90/270)	1.29
RATED VOLTAGE (V)	240	TOTAL FLUX (lm)	4013.1	<input type="checkbox"/> UP, DN (C0-180)	5.7, 43.6
NOMINAL FLUX (lm)	4013.06	CIE CLASS	SEMI-D.	<input type="checkbox"/> UP, DN (C180-360)	5.6, 45.1
LAMPS INSIDE	1	<input type="checkbox"/> up (%)	11.3	CIBSE SHR NOM	1.50
TEST VOLTAGE (V)	240	<input type="checkbox"/> down (%)	88.7	CIBSE SHR MAX	1.55



C Range: 0 - 360DEG  
 C Interval: 45.0DEG  
 Test Speed: HIGH  
 Temperature: 25.3DEG  
 Operators: DAMIN  
 Test Date: 2021-11-16

Range: 0 - 180DEG  
 Interval: 1.0DEG  
 Test System: EVERFINE GO-2000H\_V1 SYSTEM V2.0.404.7  
 Humidity: 65.0%  
 Test Distance: 9.880m [K=1.0000]  
 Remarks:

**ZONAL FLUX DIAGRAM**

ZONAL FLUX DIAGRAM:

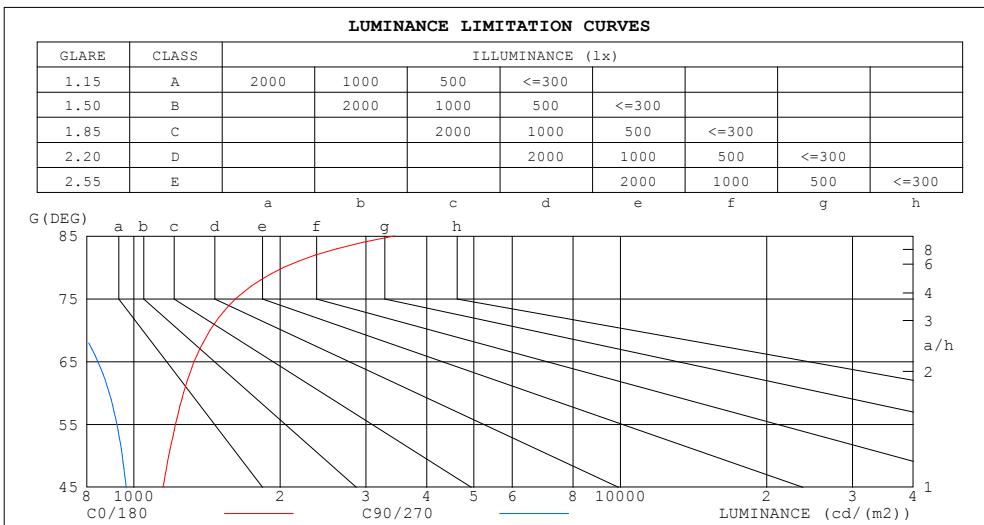
°	C0	C45	C90	C135	C180	C225	C270	C315	°	□ zone	□ total	%lum, lamp
10	1014	1005	999.7	1007	1022	1016	1008	1006	0- 10	96.95	96.95	2.42,2.42
20	986.7	965.9	947.0	970.0	999.0	983.9	961.8	971.2	10- 20	281.1	378.0	9.42,9.42
30	936.1	901.2	862.8	907.1	952.3	924.7	883.7	910.1	20- 30	435.9	814.0	20.3,20.3
40	860.0	810.6	749.1	818.1	880.1	838.9	774.7	822.3	30- 40	543.3	1357	33.8,33.8
50	758.6	695.4	608.8	704.8	782.4	727.3	637.4	709.0	40- 50	589.7	1947	48.5,48.5
60	633.0	559.6	445.1	570.3	659.9	593.0	475.5	573.7	50- 60	568.5	2515	62.7,62.7
70	490.7	409.0	266.1	420.6	518.7	441.0	295.4	421.5	60- 70	482.0	2997	74.7,74.7
80	353.1	264.0	93.99	271.9	374.8	288.5	115.6	273.0	70- 80	348.1	3346	83.4,83.4
90	259.4	172.3	2.579	168.1	264.1	178.1	4.234	174.7	80- 90	214.0	3559	88.7,88.7
100	213.4	131.5	3.496	110.3	199.9	117.6	3.085	124.0	90-100	145.0	3704	92.3,92.3
110	162.1	88.37	4.658	86.49	155.5	90.38	4.046	84.84	100-110	104.2	3809	94.9,94.9
120	131.4	73.42	5.678	71.33	126.2	72.86	5.133	70.45	110-120	75.64	3884	96.8,96.8
130	103.5	54.52	6.771	55.30	94.81	55.83	6.093	57.52	120-130	55.99	3940	98.2,98.2
140	76.01	37.55	7.745	40.77	65.87	40.58	7.052	39.43	130-140	36.34	3977	99.1,99.1
150	52.08	25.22	8.768	26.32	44.19	25.79	8.109	27.80	140-150	21.00	3998	99.6,99.6
160	31.99	17.00	9.459	15.26	23.61	14.89	9.176	18.10	150-160	10.37	4008	99.9,99.9
170	15.61	11.78	10.01	10.16	10.78	10.20	9.943	11.63	160-170	4.047	4012	100,100
180	10.06	10.04	10.18	10.04	10.04	10.03	10.20	10.04	170-180	1.009	4013	100,100
DEG	LUMINOUS INTENSITY:cd									UNIT:lm		

C Range: 0 - 360DEG  
 C Interval: 45.0DEG  
 Test Speed: HIGH  
 Temperature:25.3DEG  
 Operators:DAMIN  
 Test Date:2021-11-16

□ Range: 0 - 180DEG  
 □ Interval: 1.0DEG  
 Test System:EVERFINE GO-2000H\_V1 SYSTEM V2.0.404.7  
 Humidity:65.0%  
 Test Distance:9.880m [K=1.0000]  
 Remarks:

**LUMINANCE LIMITATION CURVES**

Test:U:240.27V I:0.1626A P:37.399W PF:0.9575 Freq:50.00Hz Lamp Flux:4013.06x1 lm		
NAME: WBB-38W-CC 5700K	TYPE:38W	WEIGHT:
SPEC.:5700K	DIM.:	SERIAL No.:1
MFR.:	SUR.:	Shielding Angle:



LUMINANCE cd/(m2)		
G (DEG)	C0/180	C90/270
85	3427	330
80	2033	541
75	1620	685
70	1435	778
65	1331	843
60	1266	890
55	1219	923
50	1180	947
45	1149	964

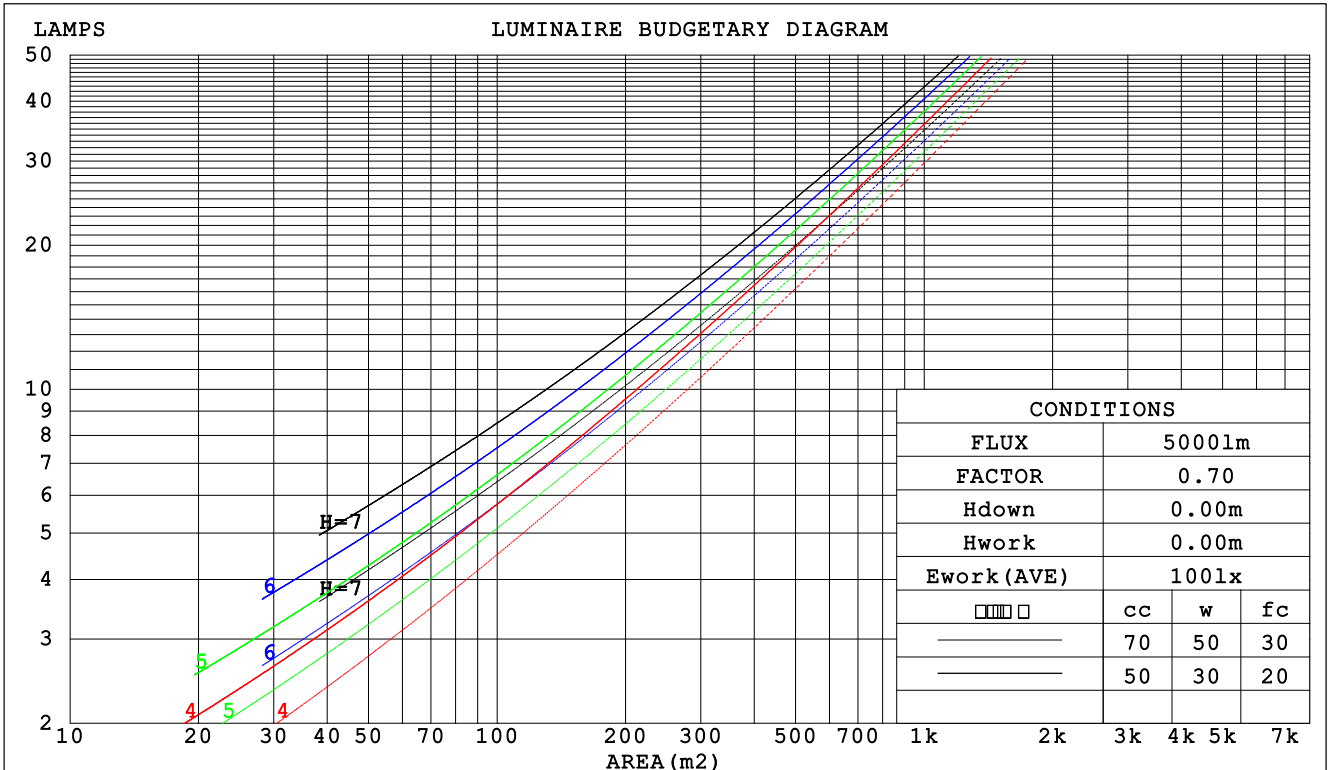
C Range: 0 - 360DEG  
 C Interval: 45.0DEG  
 Test Speed: HIGH  
 Temperature:25.3DEG  
 Operators:DAMIN  
 Test Date:2021-11-16

Range: 0 - 180DEG  
 Interval: 1.0DEG  
 Test System:EVERFINE GO-2000H\_V1 SYSTEM V2.0.404.7  
 Humidity:65.0%  
 Test Distance:9.880m [K=1.0000]  
 Remarks:

CU AND LUMINAIRE BUDGETARY ESTIMATE DIAGRAM

Test:U:240.27V I:0.1626A P:37.399W PF:0.9575 Freq:50.00Hz Lamp Flux:4013.06x1 lm		
NAME: WBB-38W-CC 5700K	TYPE:38W	WEIGHT:
SPEC.:5700K	DIM.:	SERIAL No.:1
MFR.:	SUR.:	Shielding Angle:

□cc	80%			70%			50%			30%			10%			0
□w	50%	30%	10%	50%	30%	10%	50%	30%	10%	50%	30%	10%	50%	30%	10%	0
□fc	20%			20%			20%			20%			20%			0
RCR	RCR:Room Cavity Ratio						Coefficients of Utilization(CU)									
0.0	1.16	1.16	1.16	1.12	1.12	1.12	1.05	1.05	1.05	.98	.98	.98	.92	.92	.92	.89
1.0	.99	.94	.89	.95	.91	.87	.89	.85	.82	.83	.80	.77	.78	.75	.73	.70
2.0	.85	.77	.71	.82	.75	.69	.76	.71	.66	.71	.67	.63	.67	.63	.60	.57
3.0	.74	.65	.58	.71	.63	.57	.67	.60	.54	.62	.57	.52	.58	.54	.50	.47
4.0	.65	.56	.49	.63	.54	.48	.59	.51	.46	.55	.49	.44	.52	.46	.42	.39
5.0	.58	.48	.41	.56	.47	.41	.52	.45	.39	.49	.43	.38	.46	.41	.36	.34
6.0	.52	.42	.36	.50	.41	.35	.47	.40	.34	.44	.38	.33	.42	.36	.32	.29
7.0	.47	.38	.31	.45	.37	.31	.43	.35	.30	.40	.34	.29	.38	.32	.28	.26
8.0	.42	.34	.28	.41	.33	.27	.39	.32	.26	.37	.30	.26	.35	.29	.25	.23
9.0	.39	.30	.25	.38	.30	.24	.36	.29	.24	.34	.28	.23	.32	.26	.22	.20
10.0	.36	.28	.22	.35	.27	.22	.33	.26	.21	.31	.25	.21	.30	.24	.20	.18



C Range: 0 - 360DEG  
C Interval: 45.0DEG  
Test Speed: HIGH  
Temperature:25.3DEG  
Operators:DAMIN  
Test Date:2021-11-16

□ Range: 0 - 180DEG  
□ Interval: 1.0DEG  
Test System:EVERFINE GO-2000H\_V1 SYSTEM V2.0.404.7  
Humidity:65.0%  
Test Distance:9.880m [K=1.0000]  
Remarks:

WEC AND CCEC

Test:U:240.27V I:0.1626A P:37.399W PF:0.9575 Freq:50.00Hz Lamp Flux:4013.06x1 lm		
NAME: WBB-38W-CC 5700K	TYPE:38W	WEIGHT:
SPEC.:5700K	DIM.:	SERIAL No.:1
MFR.:	SUR.:	Shielding Angle:

<input type="checkbox"/> cc	80%	70%	50%	30%	10%	0
<input type="checkbox"/> w	50% 30% 10%	50% 30% 10%	50% 30% 10%	50% 30% 10%	50% 30% 10%	0
<input type="checkbox"/> fc	20%	20%	20%	20%	20%	0
RCR	RCR:Room Cavity Ratio		Wall Exitance Coefficients (WEC)			
0.0						
1.0	.359 .204 .065	.348 .198 .063	.328 .188 .060	.310 .179 .057	.293 .170 .055	
2.0	.320 .175 .054	.310 .171 .053	.292 .162 .050	.276 .155 .048	.260 .147 .046	
3.0	.288 .153 .046	.280 .150 .045	.263 .143 .043	.249 .136 .042	.235 .130 .040	
4.0	.262 .136 .040	.254 .133 .039	.239 .127 .038	.226 .121 .037	.213 .116 .035	
5.0	.239 .122 .035	.232 .119 .035	.219 .114 .034	.207 .109 .032	.195 .104 .031	
6.0	.220 .110 .032	.214 .108 .031	.202 .103 .030	.191 .099 .029	.180 .095 .028	
7.0	.204 .101 .029	.198 .099 .028	.187 .095 .027	.177 .091 .026	.167 .087 .026	
8.0	.189 .092 .026	.184 .091 .026	.174 .087 .025	.165 .084 .024	.156 .080 .023	
9.0	.177 .085 .024	.172 .084 .024	.163 .081 .023	.154 .077 .022	.146 .074 .021	
10.0	.166 .079 .022	.161 .078 .022	.153 .075 .021	.145 .072 .020	.138 .069 .020	

<input type="checkbox"/> cc	80%	70%	50%	30%	10%	0
<input type="checkbox"/> w	50% 30% 10%	50% 30% 10%	50% 30% 10%	50% 30% 10%	50% 30% 10%	0
<input type="checkbox"/> fc	20%	20%	20%	20%	20%	0
RCR	RCR:Room Cavity Ratio		Ceiling Cavity Exitance Coefficients (CCEC)			
0.0	.277 .277 .277	.236 .236 .236	.161 .161 .161	.093 .093 .093	.030 .030 .030	
1.0	.270 .243 .217	.231 .208 .187	.158 .143 .129	.091 .083 .075	.029 .027 .024	
2.0	.263 .219 .182	.226 .189 .157	.155 .131 .110	.089 .076 .064	.029 .025 .021	
3.0	.256 .202 .160	.219 .175 .138	.151 .121 .097	.087 .071 .057	.028 .023 .019	
4.0	.248 .190 .145	.213 .164 .126	.146 .114 .089	.085 .067 .052	.027 .022 .017	
5.0	.241 .180 .134	.207 .155 .117	.142 .109 .083	.082 .064 .049	.027 .021 .016	
6.0	.233 .171 .127	.200 .148 .111	.138 .104 .078	.080 .061 .047	.026 .020 .015	
7.0	.226 .165 .122	.195 .143 .106	.134 .100 .075	.078 .059 .045	.025 .019 .015	
8.0	.220 .159 .117	.189 .138 .102	.131 .097 .073	.076 .057 .043	.025 .019 .014	
9.0	.213 .154 .114	.184 .134 .100	.127 .094 .071	.074 .056 .042	.024 .018 .014	
10.0	.208 .150 .112	.179 .130 .097	.124 .092 .069	.072 .054 .041	.023 .018 .014	

C Range: 0 - 360DEG  
 C Interval: 45.0DEG  
 Test Speed: HIGH  
 Temperature:25.3DEG  
 Operators:DAMIN  
 Test Date:2021-11-16

Range: 0 - 180DEG  
 Interval: 1.0DEG  
 Test System:EVERFINE GO-2000H\_V1 SYSTEM V2.0.404.7  
 Humidity:65.0%  
 Test Distance:9.880m [K=1.0000]  
 Remarks:

**UGR(Unified Glare Rating) Table**

Test:U:240.27V I:0.1626A P:37.399W PF:0.9575 Freq:50.00Hz Lamp Flux:4013.06x1 lm										
NAME: WBB-38W-CC 5700K					TYPE:38W			WEIGHT:		
SPEC.:5700K					DIM.:			SERIAL No.:1		
MFR.:					SUR.:			Shielding Angle:		
ceiling/cavity	0.7	0.7	0.5	0.5	0.3	0.7	0.7	0.5	0.5	0.3
walls	0.5	0.3	0.5	0.3	0.3	0.5	0.3	0.5	0.3	0.3
working plane	0.2	0.2	0.2	0.2	0.2	0.2	0.2	0.2	0.2	0.2
Room dimensions	Viewed crosswise					Viewed endwise				
x = 2H y = 2H	13.0	14.5	13.4	14.9	15.3	11.8	13.2	12.2	13.6	14.1
3H	15.2	16.5	15.7	17.0	17.4	13.3	14.6	13.7	15.0	15.5
4H	16.3	17.6	16.8	18.1	18.5	13.8	15.1	14.3	15.5	16.0
6H	17.5	18.7	18.0	19.2	19.7	14.2	15.3	14.6	15.8	16.3
8H	18.2	19.3	18.7	19.8	20.3	14.2	15.4	14.7	15.9	16.4
12H	18.9	20.1	19.5	20.5	21.1	14.2	15.3	14.8	15.8	16.4
4H 2H	13.6	14.9	14.1	15.3	15.8	12.7	14.0	13.2	14.4	14.9
3H	16.0	17.1	16.5	17.6	18.1	14.4	15.5	14.9	16.0	16.5
4H	17.3	18.3	17.8	18.8	19.4	15.1	16.1	15.7	16.7	17.2
6H	18.7	19.6	19.2	20.1	20.7	15.6	16.5	16.2	17.1	17.7
8H	19.4	20.3	20.0	20.8	21.5	15.8	16.6	16.4	17.2	17.8
12H	20.3	21.1	20.9	21.7	22.3	15.9	16.6	16.5	17.2	17.9
8H 4H	17.6	18.4	18.2	19.0	19.6	15.8	16.6	16.4	17.2	17.8
6H	19.2	19.9	19.8	20.5	21.2	16.6	17.3	17.2	17.9	18.6
8H	20.2	20.8	20.8	21.4	22.1	16.9	17.6	17.5	18.2	18.9
12H	21.3	21.8	21.9	22.5	23.2	17.1	17.7	17.8	18.3	19.0
12H 4H	17.6	18.4	18.2	19.0	19.6	15.9	16.7	16.5	17.3	18.0
6H	19.3	19.9	19.9	20.6	21.2	16.9	17.6	17.6	18.2	18.9
8H	20.3	20.9	21.0	21.5	22.2	17.4	17.9	18.0	18.6	19.3
Variations with the observer position at spacings:										
S = 1.0H	+ 0.1 / - 0.1					+ 0.1 / - 0.2				
1.5H	+ 0.2 / - 0.2					+ 0.2 / - 0.3				
2.0H	+ 0.2 / - 0.3					+ 0.2 / - 0.5				

CIE Pub.117, 4013 lm Total Lamp Luminous Flux Corrected (8log(F/F0) = 4.8)

C Range: 0 - 360DEG  
 C Interval: 45.0DEG  
 Test Speed: HIGH  
 Temperature:25.3DEG  
 Operators:DAMIN  
 Test Date:2021-11-16

Range: 0 - 180DEG  
 Interval: 1.0DEG  
 Test System:EVERFINE GO-2000H\_V1 SYSTEM V2.0.404.7  
 Humidity:65.0%  
 Test Distance:9.880m [K=1.0000]  
 Remarks:

**UTILIZATION FACTORS TABLE**

Test:U:240.27V I:0.1626A P:37.399W PF:0.9575 Freq:50.00Hz Lamp Flux:4013.06x1 lm		
NAME: WBB-38W-CC 5700K	TYPE:38W	WEIGHT:
SPEC.:5700K	DIM.:	SERIAL No.:1
MFR.:	SUR.:	Shielding Angle:

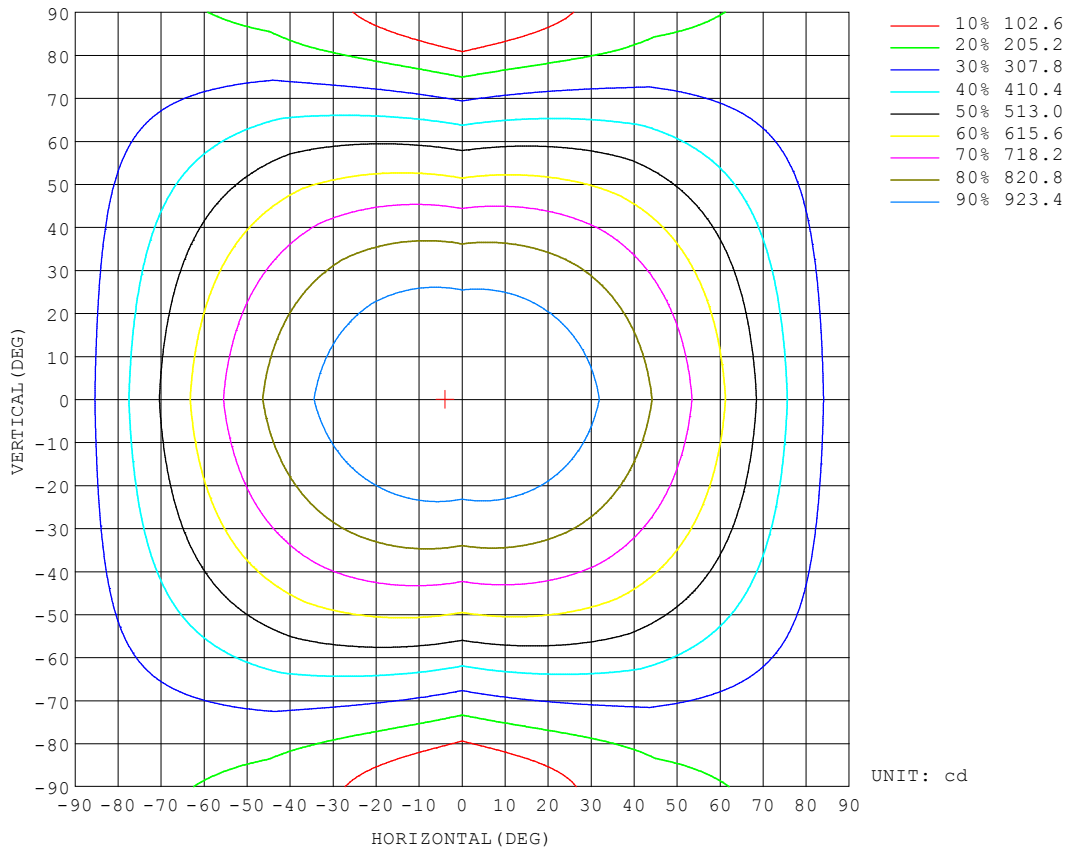
REFLECTANCE										
Ceiling	0.8	0.8	0.8	0.7	0.7	0.7	0.5	0.5	0.5	0
Walls	0.7	0.5	0.3	0.7	0.5	0.3	0.7	0.5	0.3	0
Working plane	0.2	0.2	0.2	0.2	0.2	0.2	0.2	0.2	0.2	0
ROOM INDEX	UTILIZATION FACTORS (PERCENT) $k(RI) \times RCR = 5$									
k = 0.60	51	39	32	50	38	31	48	38	31	24
0.80	60	48	40	59	47	40	57	46	39	31
1.00	68	56	48	67	55	48	64	56	47	38
1.25	76	64	56	74	62	55	70	60	54	45
1.50	81	69	61	78	68	60	74	65	59	49
2.00	88	78	70	85	76	69	80	73	66	56
2.50	92	83	75	89	81	74	84	77	71	60
3.00	96	87	81	93	85	79	87	81	76	64
4.00	100	93	87	97	91	85	91	86	81	69
5.00	103	97	92	100	94	89	93	89	85	72
ROOM INDEX	UF(total)									Direct
According to DIN EN 13032-2 2004			Suspended				SHRNO = 1.25			

C Range: 0 - 360DEG  
 C Interval: 45.0DEG  
 Test Speed: HIGH  
 Temperature:25.3DEG  
 Operators:DAMIN  
 Test Date:2021-11-16

Range: 0 - 180DEG  
 Interval: 1.0DEG  
 Test System:EVERFINE GO-2000H\_V1 SYSTEM V2.0.404.7  
 Humidity:65.0%  
 Test Distance:9.880m [K=1.0000]  
 Remarks:

**ISOCANDELA DIAGRAM**

Test:U:240.27V I:0.1626A P:37.399W PF:0.9575 Freq:50.00Hz Lamp Flux:4013.06x1 lm		
NAME: WBB-38W-CC 5700K	TYPE:38W	WEIGHT:
SPEC.:5700K	DIM.:	SERIAL No.:1
MFR.:	SUR.:	Shielding Angle:



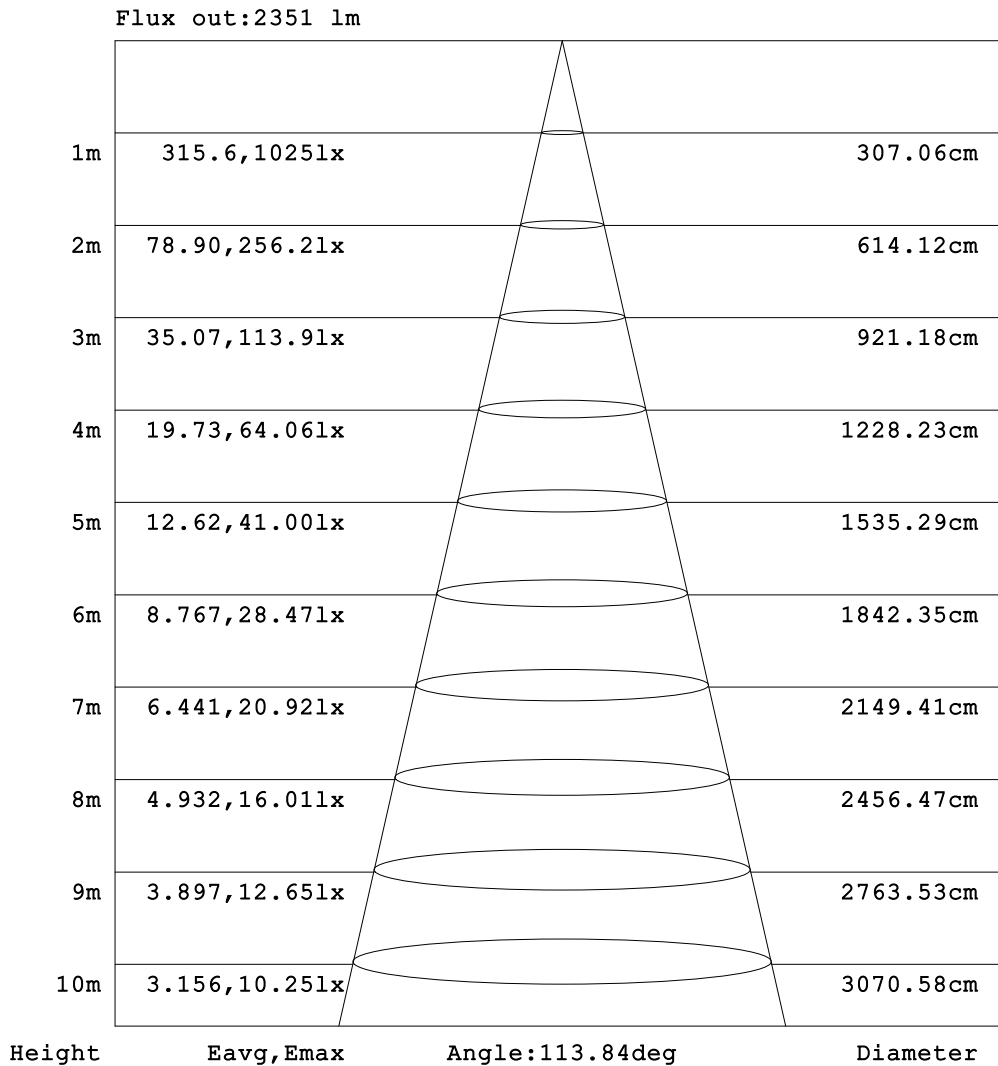
C Range: 0 - 360DEG  
 C Interval: 45.0DEG  
 Test Speed: HIGH  
 Temperature:25.3DEG  
 Operators:DAMIN  
 Test Date:2021-11-16

Range: 0 - 180DEG  
 Interval: 1.0DEG  
 Test System:EVERFINE GO-2000H\_V1 SYSTEM V2.0.404.7  
 Humidity:65.0%  
 Test Distance:9.880m [K=1.0000]  
 Remarks:



**AAI Figure**

Test:U:240.27V I:0.1626A P:37.399W PF:0.9575 Freq:50.00Hz Lamp Flux:4013.06x1 lm		
NAME: WBB-38W-CC 5700K	TYPE:38W	WEIGHT:
SPEC.:5700K	DIM.:	SERIAL No.:1
MFR.:	SUR.:	Shielding Angle:



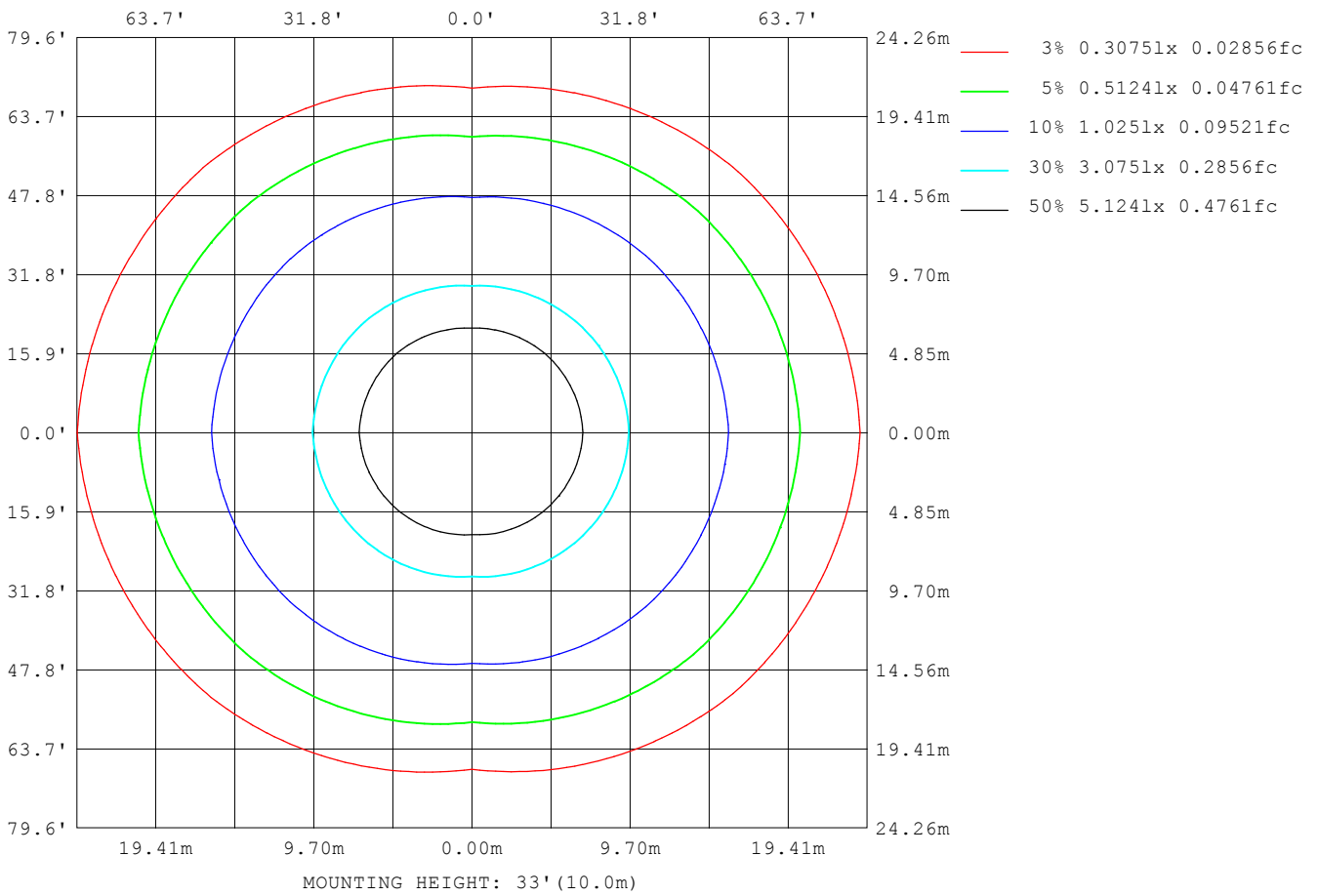
Note:The Curves indicate the illuminated area and the average illumination when the luminaire is at different distance.

C Range: 0 - 360DEG  
 C Interval: 45.0DEG  
 Test Speed: HIGH  
 Temperature:25.3DEG  
 Operators:DAMIN  
 Test Date:2021-11-16

Range: 0 - 180DEG  
 Interval: 1.0DEG  
 Test System:EVERFINE GO-2000H\_V1 SYSTEM V2.0.404.7  
 Humidity:65.0%  
 Test Distance:9.880m [K=1.0000]  
 Remarks:

**ISOLUX DIAGRAM**

Test:U:240.27V I:0.1626A P:37.399W PF:0.9575 Freq:50.00Hz Lamp Flux:4013.06x1 lm		
NAME: WBB-38W-CC 5700K	TYPE:38W	WEIGHT:
SPEC.:5700K	DIM.:	SERIAL No.:1
MFR.:	SUR.:	Shielding Angle:



C Range: 0 - 360DEG  
 C Interval: 45.0DEG  
 Test Speed: HIGH  
 Temperature:25.3DEG  
 Operators:DAMIN  
 Test Date:2021-11-16

Range: 0 - 180DEG  
 Interval: 1.0DEG  
 Test System:EVERFINE GO-2000H\_V1 SYSTEM V2.0.404.7  
 Humidity:65.0%  
 Test Distance:9.880m [K=1.0000]  
 Remarks:

**LED Avg.L Report**

Test:U:240.27V I:0.1626A P:37.399W PF:0.9575 Freq:50.00Hz Lamp Flux:4013.06x1 lm		
NAME: WBB-38W-CC 5700K	TYPE:38W	WEIGHT:
SPEC.:5700K	DIM.:	SERIAL No.:1
MFR.:	SUR.:	Shielding Angle:

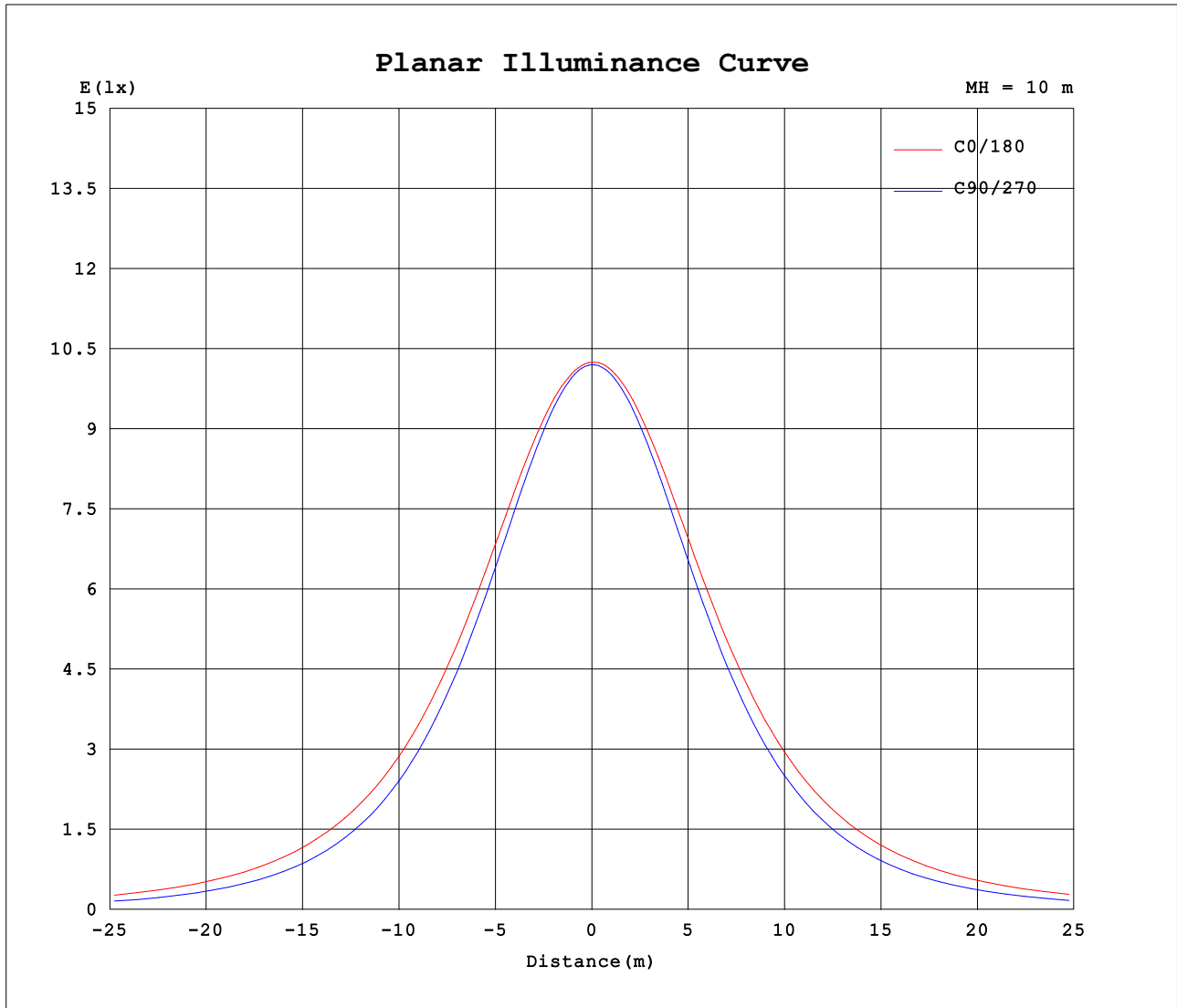
AvgL	cd/m2
L_0~180 (65) av	1364
L_0~180 (75) av	1672
L_0~180 (85) av	3504
L_90~270 (65) av	880
L_90~270 (75) av	735
L_90~270 (85) av	412
L_45 (65) av	1183
L_45 (75) av	1338
L_45 (85) av	2460

Standard: GB/T 29293-2012

C Range: 0 - 360DEG  
 C Interval: 45.0DEG  
 Test Speed: HIGH  
 Temperature:25.3DEG  
 Operators:DAMIN  
 Test Date:2021-11-16

Range: 0 - 180DEG  
 Interval: 1.0DEG  
 Test System:EVERFINE GO-2000H\_V1 SYSTEM V2.0.404.7  
 Humidity:65.0%  
 Test Distance:9.880m [K=1.0000]  
 Remarks:

Planar Illuminance Curve



C Range: 0 - 360DEG  
 C Interval: 45.0DEG  
 Test Speed: HIGH  
 Temperature: 25.3DEG  
 Operators: DAMIN  
 Test Date: 2021-11-16

Range: 0 - 180DEG  
 Interval: 1.0DEG  
 Test System: EVERFINE GO-2000H\_V1 SYSTEM V2.0.404.7  
 Humidity: 65.0%  
 Test Distance: 9.880m [K=1.0000]  
 Remarks:

LUMINOUS DISTRIBUTION INTENSITY DATA

Test:U:240.27V I:0.1626A P:37.399W PF:0.9575 Freq:50.00Hz Lamp Flux:4013.06x1 lm		
NAME: WBB-38W-CC 5700K	TYPE:38W	WEIGHT:
SPEC.:5700K	DIM.:	SERIAL No.:1
MFR.:	SUR.:	Shielding Angle:

Table--1

UNIT: cd

C (DEG) □ (DEG)	0	45	90	135	180	225	270	315											
0	1025	1022	1020	1018	1025	1022	1020	1018											
5	1021	1017	1014	1016	1026	1022	1018	1015											
10	1014	1005	1000	1007	1022	1016	1008	1006											
15	1003	989	977	992	1013	1003	989	992											
20	987	966	947	970	999	984	962	971											
25	964	937	909	942	979	958	927	944											
30	936	901	863	907	952	925	884	910											
35	901	859	809	866	919	885	833	870											
40	860	811	749	818	880	839	775	822											
45	812	756	682	764	834	786	710	768											
50	759	695	609	705	782	727	637	709											
55	699	630	529	640	724	663	559	644											
60	633	560	445	570	660	593	476	574											
65	562	485	356	496	591	519	387	499											
70	491	409	266	421	519	441	295	422											
75	419	334	177	344	446	363	203	345											
80	353	264	94.0	272	375	289	116	273											
85	299	208	28.8	210	312	224	43.0	215											
90	259	172	2.58	168	264	178	4.23	175											
95	233	152	2.98	144	231	151	2.65	153											
100	213	132	3.50	110	200	118	3.09	124											
105	187	107	4.01	102	173	106	3.55	105											
110	162	88.4	4.66	86.5	156	90.4	4.05	84.8											
115	146	79.7	5.20	76.7	140	78.5	4.64	74.4											
120	131	73.4	5.68	71.3	126	72.9	5.13	70.4											
125	117	67.6	6.22	63.2	110	64.4	5.63	65.9											
130	103	54.5	6.77	55.3	94.8	55.8	6.09	57.5											
135	89.0	45.6	7.27	48.5	79.9	48.5	6.57	47.5											
140	76.0	37.6	7.75	40.8	65.9	40.6	7.05	39.4											
145	63.7	30.4	8.31	33.2	55.1	32.8	7.51	33.2											
150	52.1	25.2	8.77	26.3	44.2	25.8	8.11	27.8											
155	41.4	19.8	9.14	20.3	33.3	19.9	8.69	22.6											
160	32.0	17.0	9.46	15.3	23.6	14.9	9.18	18.1											
165	23.1	14.4	9.79	11.4	15.7	11.2	9.53	14.6											
170	15.6	11.8	10.0	10.2	10.8	10.2	9.94	11.6											
175	10.9	10.5	10.2	10.0	9.93	10.00	10.1	10.4											
180	10.1	10.0	10.2	10.0	10.0	10.0	10.2	10.0											

C Range: 0 - 360DEG  
 C Interval: 45.0DEG  
 Test Speed: HIGH  
 Temperature:25.3DEG  
 Operators:DAMIN  
 Test Date:2021-11-16

□ Range: 0 - 180DEG  
 □ Interval: 1.0DEG  
 Test System:EVERFINE GO-2000H\_V1 SYSTEM V2.0.404.7  
 Humidity:65.0%  
 Test Distance:9.880m [K=1.0000]  
 Remarks: