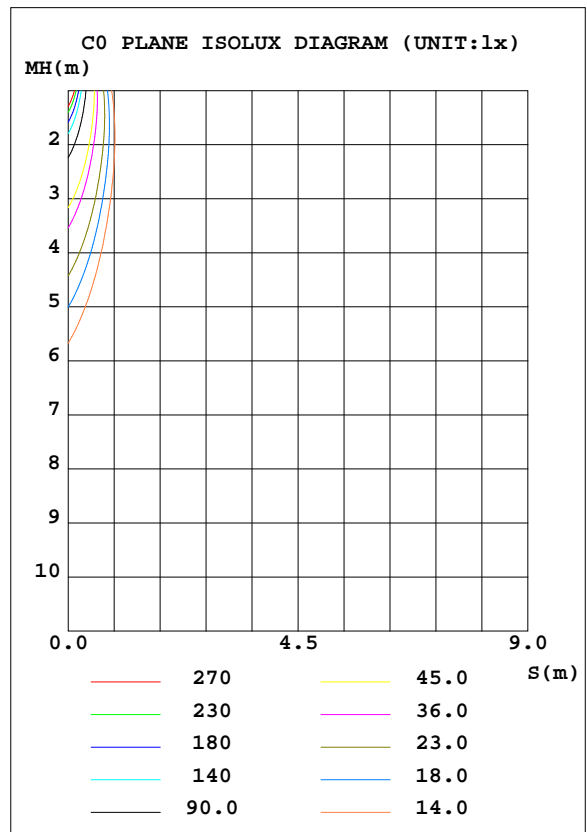
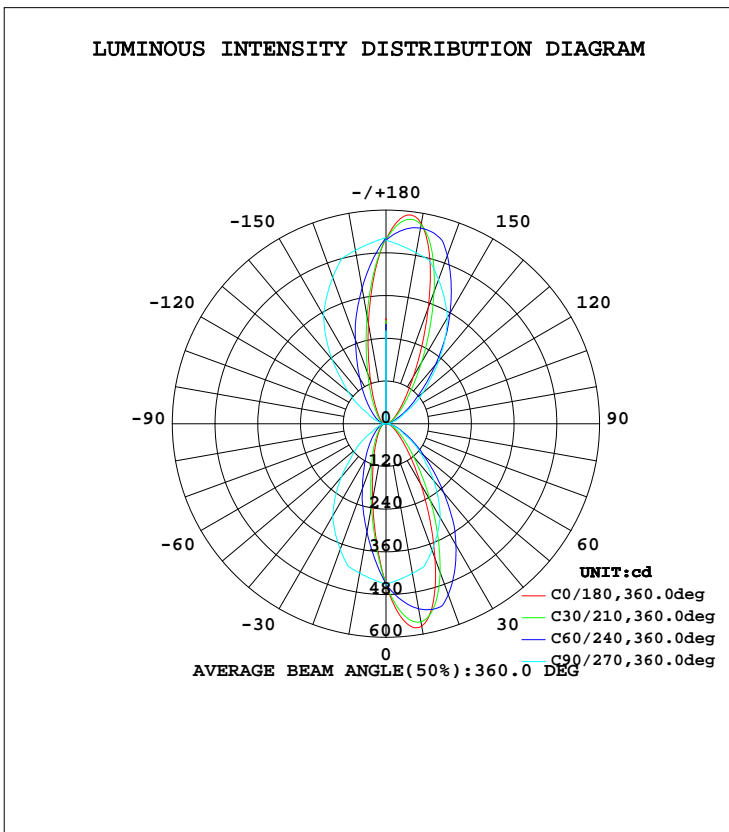


LUMINAIRE PHOTOMETRIC TEST REPORT

Test:U:240.4V I:0.0440A P:9.810W PF:0.9210 Lamp Flux:1058.68x1 lm		
NAME: SWL-10W-CC-W	TYPE:10W	WEIGHT:
DIM.:	SPEC.:5700K	SERIAL No.:
MFR.:	SUR.:0.0855	PROTECTION ANGLE:

DATA OF LAMP		PHOTOMETRIC DATA Eff: 107.92 lm/W			
MODEL	SWL-10W-CC-W	I _{max} (cd)	590.7	S/MH(C0/180)	0.32
NOMINAL POWER(W)	10	LOR(%)	100.0	S/MH(C90/270)	1.03
RATED VOLTAGE(V)	240	TOTAL FLUX(lm)	1058.7	η UP, DN(C0-180)	25.3, 23.9
NOMINAL FLUX(lm)	1058.68	CIE CLASS	DIFFUSE	η UP, DN(C180-360)	25.1, 25.6
LAMPS INSIDE	1	η up(%)	50.4	CIBSE SHR NOM	0.50
TEST VOLTAGE(V)	240.3	η down(%)	49.6	CIBSE SHR MAX	0.65



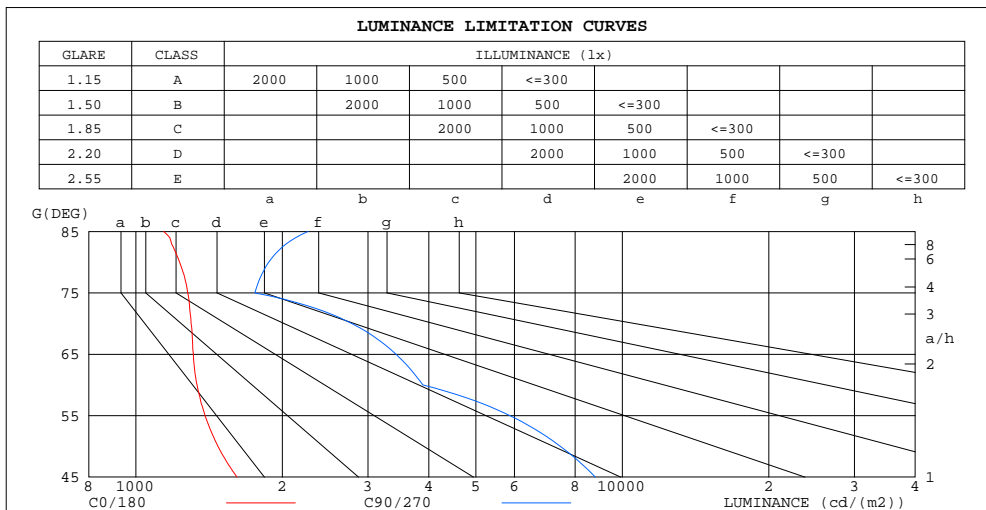
C Range: 0 - 360DEG
 C Interval: 5.0DEG
 Test Speed: HIGH
 Temperature:25.3DEG
 Operators:DAMIN
 Test Date:2020-12-22

γ Range: 0 - 180DEG
 γ Interval: 0.5DEG
 Test System:EVERFINE GO-2000A_V1 SYSTEM V2.0.276
 Humidity:65.0%
 Test Distance:10.237m [K=1.0000]
 Remarks:

ZONAL FLUX DIAGRAM
AND LUMINANCE LIMITATION CURVES

ZONAL FLUX DIAGRAM:

γ	C0	C45	C90	C135	C180	C225	C270	C315	γ	Φ zone	Φ total	§lum, lamp
5	323.4	353.0	438.5	518.3	552.9	518.9	438.8	353.1	0- 5	10.58	10.58	1.00,1.00
10	217.8	265.4	426.2	551.2	577.4	553.1	426.9	265.2	5- 10	30.25	40.83	3.86,3.86
15	145.8	196.6	414.0	539.2	515.2	543.1	415.0	196.6	10- 15	46.19	87.02	8.22,8.22
20	101.0	146.7	375.8	488.8	402.3	494.9	378.2	146.8	15- 20	56.40	143.4	13.5,13.5
25	72.36	108.2	337.6	399.2	287.4	407.6	341.5	108.7	20- 25	59.81	203.2	19.2,19.2
30	53.40	80.90	299.4	307.7	195.7	317.3	304.7	81.78	25- 30	58.37	261.6	24.7,24.7
35	40.79	61.72	247.2	229.3	131.6	238.9	256.6	62.77	30- 35	53.77	315.4	29.8,29.8
40	32.24	48.00	195.0	167.1	89.34	176.5	208.4	49.15	35- 40	46.96	362.3	34.2,34.2
45	26.18	37.77	142.8	117.9	61.76	126.7	160.2	38.89	40- 45	39.31	401.6	37.9,37.9
50	21.76	30.45	110.1	83.04	43.93	91.22	126.3	31.51	45- 50	32.01	433.6	41,41
55	18.27	25.02	77.35	58.27	32.30	65.99	92.39	26.00	50- 55	25.80	459.4	43.4,43.4
60	15.32	20.76	44.64	41.41	24.44	48.06	58.47	21.49	55- 60	19.84	479.3	45.3,45.3
65	12.73	17.24	33.23	28.67	18.73	34.73	45.35	17.79	60- 65	14.86	494.1	46.7,46.7
70	10.20	13.96	21.83	19.57	14.34	25.08	32.22	14.36	65- 70	11.55	505.7	47.8,47.8
75	7.595	10.67	10.43	12.83	10.52	17.70	19.09	10.96	70- 75	8.352	514.0	48.6,48.6
80	4.903	7.718	7.474	7.221	4.516	11.45	13.30	7.827	75- 80	5.537	519.6	49.1,49.1
85	2.282	5.339	4.517	4.249	0.6678	6.676	7.509	4.890	80- 85	3.514	523.1	49.4,49.4
90	1.519	3.072	1.561	1.357	0.5846	2.074	1.716	2.025	85- 90	1.821	524.9	49.6,49.6
95	4.011	6.622	7.229	4.844	0.5057	4.757	6.804	5.460	90- 95	1.959	526.9	49.8,49.8
100	6.547	10.28	12.90	8.544	1.879	7.588	11.89	8.988	95-100	3.803	530.7	50.1,50.1
105	8.823	13.35	18.57	13.89	3.545	10.41	16.98	12.07	100-105	5.734	536.4	50.7,50.7
110	11.05	16.59	32.37	20.13	7.937	13.54	30.78	15.28	105-110	8.276	544.7	51.5,51.5
115	13.33	20.02	46.18	27.86	13.45	19.74	44.58	18.72	110-115	11.25	555.9	52.5,52.5
120	15.89	23.92	59.98	38.21	19.39	30.93	58.38	22.72	115-120	14.45	570.4	53.9,53.9
125	18.96	28.88	98.94	52.24	26.52	46.74	96.93	27.76	120-125	19.39	589.8	55.7,55.7
130	22.82	35.30	137.9	71.60	36.16	66.81	135.5	34.15	125-130	25.37	615.2	58.1,58.1
135	27.83	44.25	176.9	98.76	49.91	94.15	174.0	42.91	130-135	31.45	646.6	61.1,61.1
140	34.86	57.02	234.9	137.6	70.67	135.9	231.2	55.40	135-140	38.52	685.1	64.7,64.7
145	45.22	74.65	292.9	189.2	103.1	194.6	288.3	72.47	140-145	46.05	731.2	69.1,69.1
150	61.44	100.0	351.0	258.9	155.0	267.9	345.4	96.97	145-150	53.01	784.2	74.1,74.1
155	86.69	136.9	394.2	347.9	235.4	359.4	388.4	132.6	150-155	58.19	842.4	79.6,79.6
160	126.4	189.6	437.5	446.7	348.0	458.9	431.4	183.4	155-160	60.85	903.2	85.3,85.3
165	189.4	256.1	480.8	521.6	476.7	530.7	474.4	248.0	160-165	59.16	962.4	90.9,90.9
170	284.8	340.5	494.8	564.9	571.5	568.4	488.2	330.8	165-170	50.21	1013	95.6,95.6
175	407.1	434.9	508.8	563.6	585.3	561.5	502.0	425.3	170-175	33.96	1047	98.9,98.9
180	522.8	522.8	522.8	522.8	515.8	515.8	515.8	515.8	175-180	12.12	1059	100,100
DEG	LUMINOUS INTENSITY:cd									UNIT:lm		



LUMINANCE cd/(m2)		
G(DEG)	C0/180	C90/270
85	1141	2258
80	1230	1875
75	1279	1756
70	1299	2781
65	1313	3427
60	1335	3890
55	1388	5876
50	1475	7462
45	1613	8799

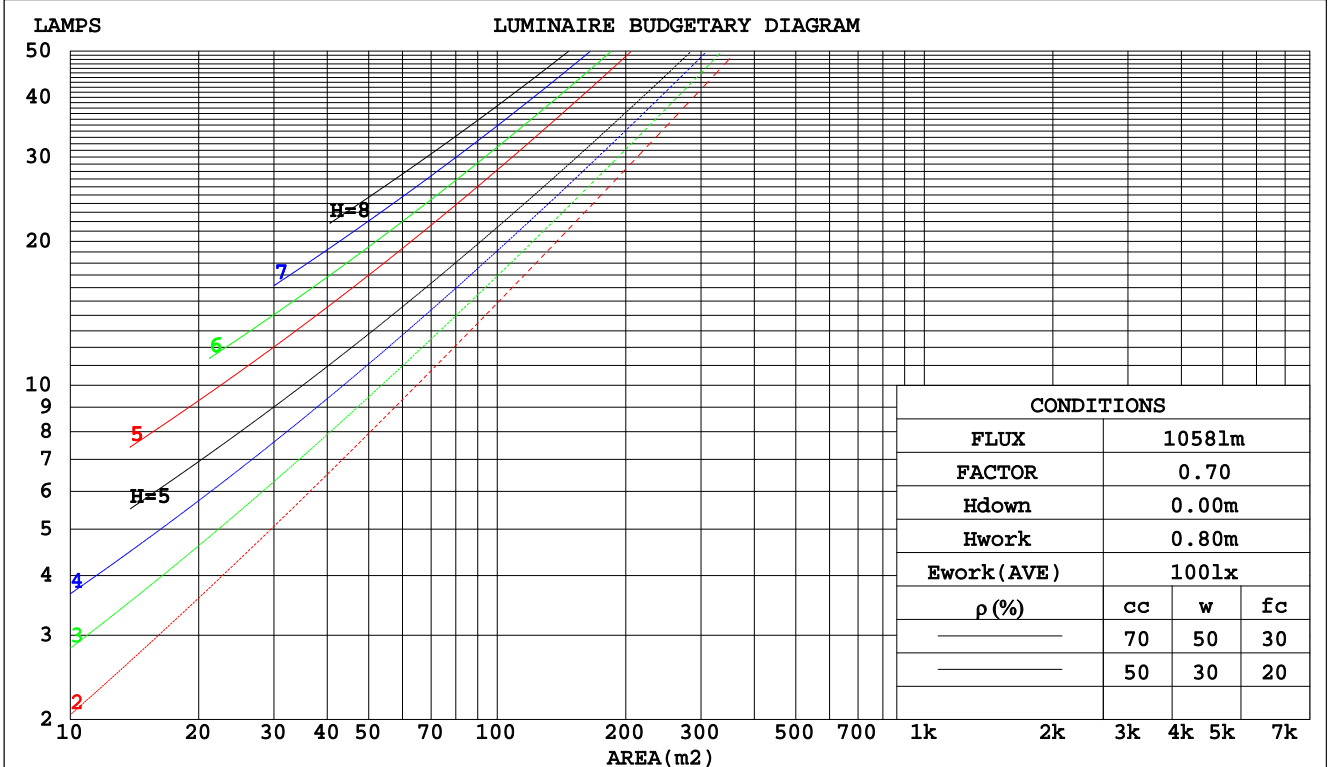
C Range: 0 - 360DEG
C Interval: 5.0DEG
Test Speed: HIGH
Temperature: 25.3DEG
Operators: DAMIN
Test Date: 2020-12-22

γ Range: 0 - 180DEG
γ Interval: 0.5DEG
Test System: EVERFINE GO-2000A_V1 SYSTEM V2.0.276
Humidity: 65.0%
Test Distance: 10.237m [K=1.0000]
Remarks:

CU AND LUMINAIRE BUDGETARY ESTIMATE DIAGRAM

Test:U:240.4V I:0.0440A P:9.810W PF:0.9210 Lamp Flux:1058.68x1 lm		
NAME: SWL-10W-CC-W	TYPE:10W	WEIGHT:
DIM.:	SPEC.:5700K	SERIAL No.:
MFR.:	SUR.:0.0855	PROTECTION ANGLE:

pcc	80%			70%			50%			30%			10%			0
	50%	30%	10%	50%	30%	10%	50%	30%	10%	50%	30%	10%	50%	30%	10%	0
pw																
pfc	20%			20%			20%			20%			20%			0
RCR	RCR:Room Cavity Ratio						Coefficients of Utilization(CU)									
0.0	1.07	1.07	1.07	.99	.99	.99	.83	.83	.83	.69	.69	.69	.56	.56	.56	.50
1.0	.95	.92	.89	.88	.85	.82	.75	.73	.71	.62	.61	.60	.51	.50	.49	.44
2.0	.85	.79	.75	.79	.74	.70	.67	.64	.61	.57	.54	.52	.47	.45	.44	.39
3.0	.76	.69	.64	.70	.65	.60	.61	.56	.53	.51	.48	.46	.43	.41	.39	.35
4.0	.68	.61	.56	.64	.57	.53	.55	.50	.47	.47	.44	.41	.39	.37	.35	.32
5.0	.62	.54	.49	.58	.51	.46	.50	.45	.41	.43	.39	.37	.36	.34	.32	.29
6.0	.56	.49	.44	.53	.46	.41	.46	.41	.37	.40	.36	.33	.34	.31	.29	.26
7.0	.51	.44	.39	.48	.42	.37	.42	.37	.34	.37	.33	.30	.31	.29	.27	.24
8.0	.47	.40	.35	.44	.38	.34	.39	.34	.31	.34	.30	.27	.29	.27	.24	.22
9.0	.44	.37	.32	.41	.35	.31	.36	.31	.28	.32	.28	.25	.28	.25	.23	.21
10.0	.40	.34	.29	.38	.32	.28	.34	.29	.26	.30	.26	.23	.26	.23	.21	.19



C Range: 0 - 360DEG
 C Interval: 5.0DEG
 Test Speed: HIGH
 Temperature:25.3DEG
 Operators:DAMIN
 Test Date:2020-12-22

γ Range: 0 - 180DEG
 γ Interval: 0.5DEG
 Test System:EVERFINE GO-2000A_V1 SYSTEM V2.0.276
 Humidity:65.0%
 Test Distance:10.237m [K=1.0000]
 Remarks:

WEC AND CCEC

Test:U:240.4V I:0.0440A P:9.810W PF:0.9210 Lamp Flux:1058.68x1 lm		
NAME: SWL-10W-CC-W	TYPE:10W	WEIGHT:
DIM.:	SPEC.:5700K	SERIAL No.:
MFR.:	SUR.:0.0855	PROTECTION ANGLE:

ρcc	80%			70%			50%			30%			10%			0
ρw	50%	30%	10%	50%	30%	10%	50%	30%	10%	50%	30%	10%	50%	30%	10%	0
ρfc	20%			20%			20%			20%			20%			0
RCR	RCR:Room Cavity Ratio						Wall Exitance Coefficients(WEC)									
0.0																
1.0	.247	.140	.044	.225	.128	.041	.183	.105	.034	.145	.084	.027	.110	.064	.021	
2.0	.230	.126	.039	.210	.116	.036	.173	.096	.030	.138	.077	.024	.106	.060	.019	
3.0	.214	.114	.034	.196	.105	.032	.162	.088	.027	.130	.071	.022	.101	.056	.017	
4.0	.200	.104	.031	.183	.096	.028	.152	.080	.024	.122	.066	.020	.095	.052	.016	
5.0	.187	.095	.028	.171	.088	.026	.142	.074	.022	.115	.061	.018	.090	.048	.014	
6.0	.175	.088	.025	.161	.081	.023	.134	.069	.020	.109	.057	.017	.085	.045	.013	
7.0	.164	.081	.023	.151	.075	.021	.126	.064	.018	.103	.053	.015	.081	.042	.012	
8.0	.154	.075	.021	.142	.070	.020	.119	.060	.017	.097	.049	.014	.077	.040	.012	
9.0	.146	.070	.020	.134	.065	.018	.113	.056	.016	.092	.046	.013	.073	.037	.011	
10.0	.138	.066	.018	.127	.061	.017	.107	.052	.015	.088	.044	.012	.070	.035	.010	

ρcc	80%			70%			50%			30%			10%			0
ρw	50%	30%	10%	50%	30%	10%	50%	30%	10%	50%	30%	10%	50%	30%	10%	0
ρfc	20%			20%			20%			20%			20%			0
RCR	RCR:Room Cavity Ratio						Ceiling Cavity Exitance Coefficients(CCEC)									
0.0	.575	.575	.575	.491	.491	.491	.335	.335	.335	.193	.193	.193	.062	.062	.062	
1.0	.563	.544	.527	.482	.467	.453	.330	.321	.313	.190	.186	.182	.061	.060	.059	
2.0	.554	.522	.495	.474	.449	.428	.325	.311	.299	.187	.181	.175	.060	.059	.057	
3.0	.546	.506	.474	.468	.436	.411	.321	.303	.288	.186	.177	.170	.060	.057	.056	
4.0	.538	.494	.459	.462	.427	.399	.318	.297	.281	.184	.174	.166	.059	.057	.055	
5.0	.532	.484	.449	.457	.419	.390	.315	.293	.276	.182	.172	.164	.059	.056	.054	
6.0	.525	.476	.441	.452	.412	.384	.312	.289	.272	.181	.170	.162	.058	.056	.053	
7.0	.520	.470	.435	.447	.407	.379	.309	.286	.269	.179	.168	.160	.058	.055	.053	
8.0	.514	.465	.431	.443	.403	.376	.306	.283	.266	.178	.167	.159	.058	.055	.053	
9.0	.509	.460	.427	.439	.399	.373	.304	.281	.265	.177	.166	.158	.057	.054	.052	
10.0	.504	.456	.425	.435	.396	.370	.302	.279	.263	.176	.165	.157	.057	.054	.052	

C Range: 0 - 360DEG
 C Interval: 5.0DEG
 Test Speed: HIGH
 Temperature:25.3DEG
 Operators:DAMIN
 Test Date:2020-12-22

γ Range: 0 - 180DEG
 γ Interval: 0.5DEG
 Test System:EVERFINE GO-2000A_V1 SYSTEM V2.0.276
 Humidity:65.0%
 Test Distance:10.237m [K=1.0000]
 Remarks:

Uncorrected UGR Table

Test:U:240.4V I:0.0440A P:9.810W PF:0.9210 Lamp Flux:1058.68x1 lm										
NAME: SWL-10W-CC-W					TYPE:10W			WEIGHT:		
DIM.:					SPEC.:5700K			SERIAL No.:		
MFR.:					SUR.:0.0855			PROTECTION ANGLE:		
ceiling/cavity	0.7	0.7	0.5	0.5	0.3	0.7	0.7	0.5	0.5	0.3
walls	0.5	0.3	0.5	0.3	0.3	0.5	0.3	0.5	0.3	0.3
working plane	0.2	0.2	0.2	0.2	0.2	0.2	0.2	0.2	0.2	0.2
Room dimensions	Viewed crosswise					Viewed endwise				
x = 2H y = 2H	5.9	6.7	6.7	7.6	8.6	12.3	13.2	13.2	14.0	15.1
3H	7.1	7.9	8.0	8.7	9.8	13.1	13.9	14.0	14.7	15.8
4H	7.7	8.4	8.6	9.3	10.4	13.4	14.0	14.3	14.9	16.1
6H	8.2	8.8	9.1	9.7	10.9	13.5	14.1	14.4	15.1	16.2
8H	8.3	8.9	9.3	9.8	11.0	13.6	14.2	14.5	15.1	16.3
12H	8.4	9.0	9.4	9.9	11.1	13.6	14.2	14.6	15.1	16.3
4H 2H	6.8	7.5	7.7	8.3	9.5	12.1	12.8	13.0	13.7	14.8
3H	8.1	8.7	9.1	9.6	10.8	13.1	13.7	14.0	14.6	15.8
4H	8.8	9.3	9.8	10.3	11.5	13.5	14.0	14.4	14.9	16.1
6H	9.4	9.8	10.4	10.8	12.0	13.8	14.3	14.8	15.2	16.5
8H	9.6	10.0	10.6	11.0	12.3	14.0	14.4	15.0	15.4	16.6
12H	9.8	10.2	10.8	11.1	12.4	14.1	14.5	15.1	15.5	16.8
8H 4H	9.3	9.7	10.3	10.7	11.9	13.4	13.8	14.4	14.8	16.1
6H	10.0	10.4	11.1	11.4	12.7	13.9	14.3	14.9	15.3	16.6
8H	10.4	10.7	11.4	11.7	13.0	14.2	14.5	15.3	15.5	16.9
12H	10.7	11.0	11.7	12.0	13.3	14.5	14.8	15.6	15.8	17.1
12H 4H	9.4	9.7	10.4	10.7	12.0	13.3	13.7	14.3	14.7	16.0
6H	10.2	10.5	11.3	11.5	12.9	13.9	14.2	14.9	15.2	16.5
8H	10.7	10.9	11.7	11.9	13.3	14.3	14.5	15.3	15.5	16.9
Variations with the observer position at spacings:										
S = 1.0H	+ 0.2 / - 0.2					+ 1.3 / - 0.5				
1.5H	+ 0.1 / - 0.1					+ 2.2 / - 1.3				
2.0H	+ 0.1 / - 0.2					+ 3.0 / - 1.4				

CIE Pub.117 Corrected 1059 lm Total Lamp Luminous Flux.(8log(F/F0) = 0.2)

C Range: 0 - 360DEG
 C Interval: 5.0DEG
 Test Speed: HIGH
 Temperature:25.3DEG
 Operators:DAMIN
 Test Date:2020-12-22

γ Range: 0 - 180DEG
 γ Interval: 0.5DEG
 Test System:EVERFINE GO-2000A_V1 SYSTEM V2.0.276
 Humidity:65.0%
 Test Distance:10.237m [K=1.0000]
 Remarks:

UTILIZATION FACTORS TABLE

Test:U:240.4V I:0.0440A P:9.810W PF:0.9210 Lamp Flux:1058.68x1 lm		
NAME: SWL-10W-CC-W	TYPE:10W	WEIGHT:
DIM.:	SPEC.:5700K	SERIAL No.:
MFR.:	SUR.:0.0855	PROTECTION ANGLE:

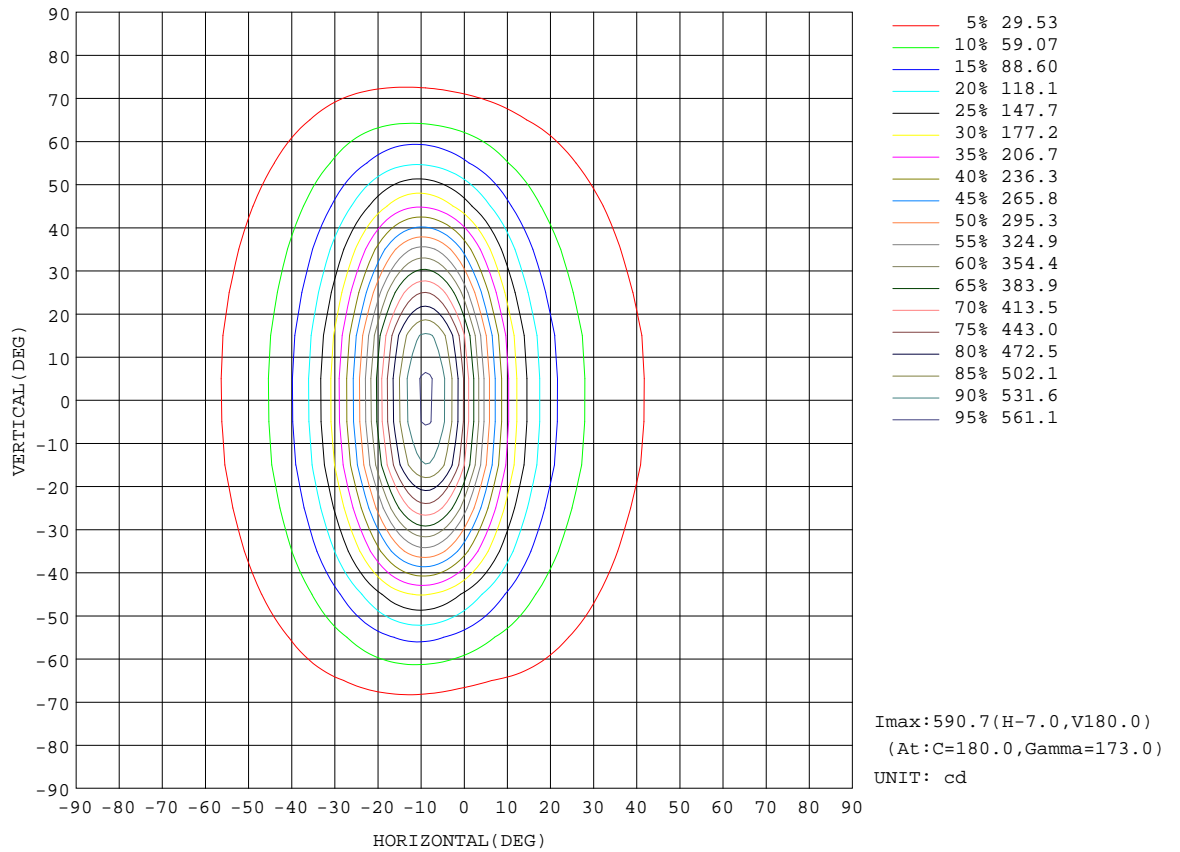
REFLECTANCE										
Ceiling	0.8	0.8	0.8	0.7	0.7	0.7	0.5	0.5	0.5	0
Walls	0.7	0.5	0.3	0.7	0.5	0.3	0.7	0.5	0.3	0
Working plane	0.2	0.2	0.2	0.2	0.2	0.2	0.2	0.2	0.2	0
ROOM INDEX	UTILIZATION FACTORS(PERCENT) $k(RI) \times RCR = 5$									
k = 0.60	51	42	36	49	40	35	44	37	33	26
0.80	60	51	44	57	48	43	51	44	40	30
1.00	67	58	51	63	55	49	56	50	45	34
1.25	74	64	58	69	61	55	60	55	50	37
1.50	78	69	63	73	65	60	64	58	54	39
2.00	84	76	70	78	72	67	68	63	59	41
2.50	88	81	75	82	76	71	70	66	63	42
3.00	91	84	79	84	79	75	72	69	65	43
4.00	95	89	85	88	83	79	75	72	69	45
5.00	97	93	89	90	86	83	76	74	72	46
ROOM INDEX	UF(total)									Direct
According to DIN EN 13032-2 2004			Suspended				SHRNOM = 1.25			

C Range: 0 - 360DEG
 C Interval: 5.0DEG
 Test Speed: HIGH
 Temperature:25.3DEG
 Operators:DAMIN
 Test Date:2020-12-22

γ Range: 0 - 180DEG
 γ Interval: 0.5DEG
 Test System:EVERFINE GO-2000A_V1 SYSTEM V2.0.276
 Humidity:65.0%
 Test Distance:10.237m [K=1.0000]
 Remarks:

ISOCANDELA DIAGRAM

Test:U:240.4V I:0.0440A P:9.810W PF:0.9210 Lamp Flux:1058.68x1 lm		
NAME: SWL-10W-CC-W	TYPE:10W	WEIGHT:
DIM.:	SPEC.:5700K	SERIAL No.:
MFR.:	SUR.:0.0855	PROTECTION ANGLE:

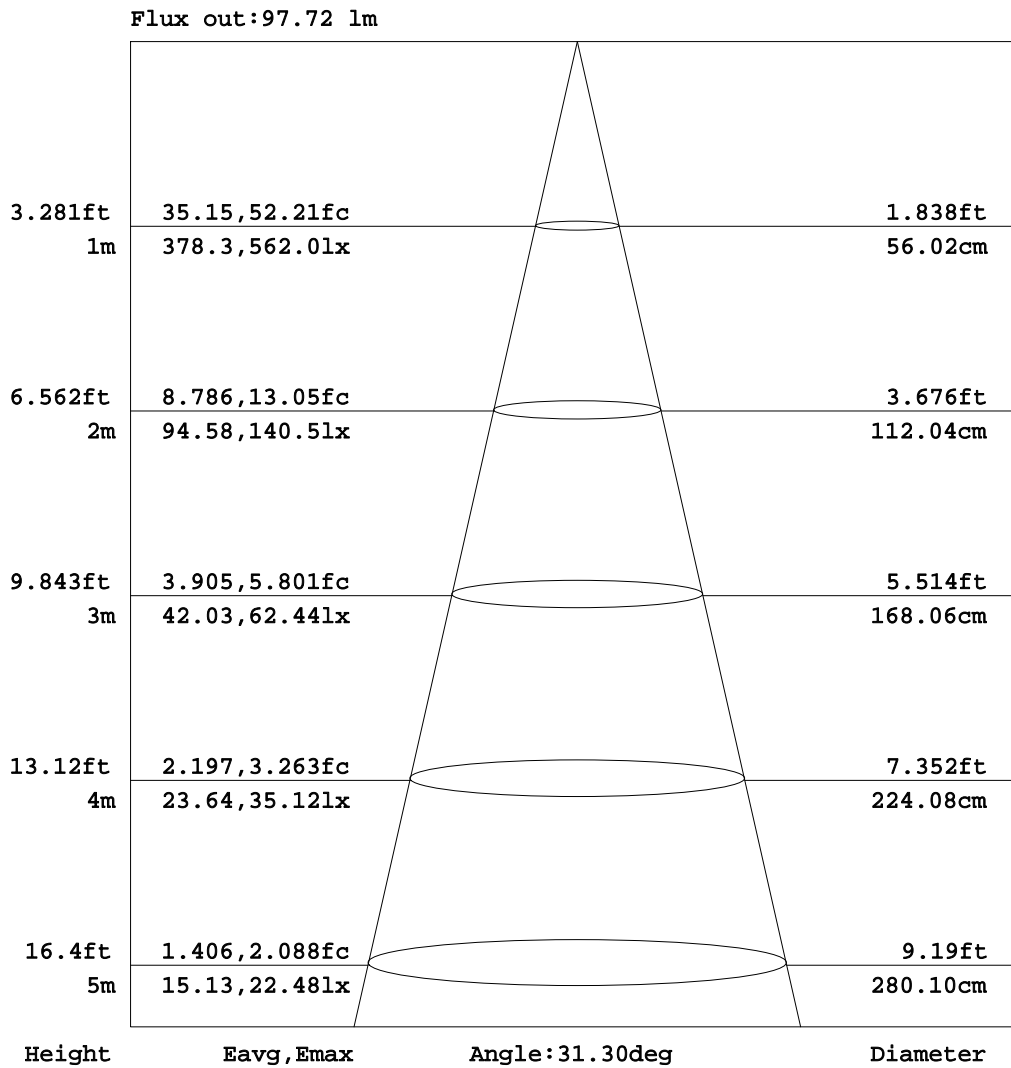


C Range: 0 - 360DEG
 C Interval: 5.0DEG
 Test Speed: HIGH
 Temperature:25.3DEG
 Operators:DAMIN
 Test Date:2020-12-22

γ Range: 0 - 180DEG
 γ Interval: 0.5DEG
 Test System:EVERFINE GO-2000A_V1 SYSTEM V2.0.276
 Humidity:65.0%
 Test Distance:10.237m [K=1.0000]
 Remarks:

AAI Figure

Test:U:240.4V I:0.0440A P:9.810W PF:0.9210 Lamp Flux:1058.68x1 lm		
NAME: SWL-10W-CC-W	TYPE:10W	WEIGHT:
DIM.:	SPEC.:5700K	SERIAL No.:
MFR.:	SUR.:0.0855	PROTECTION ANGLE:



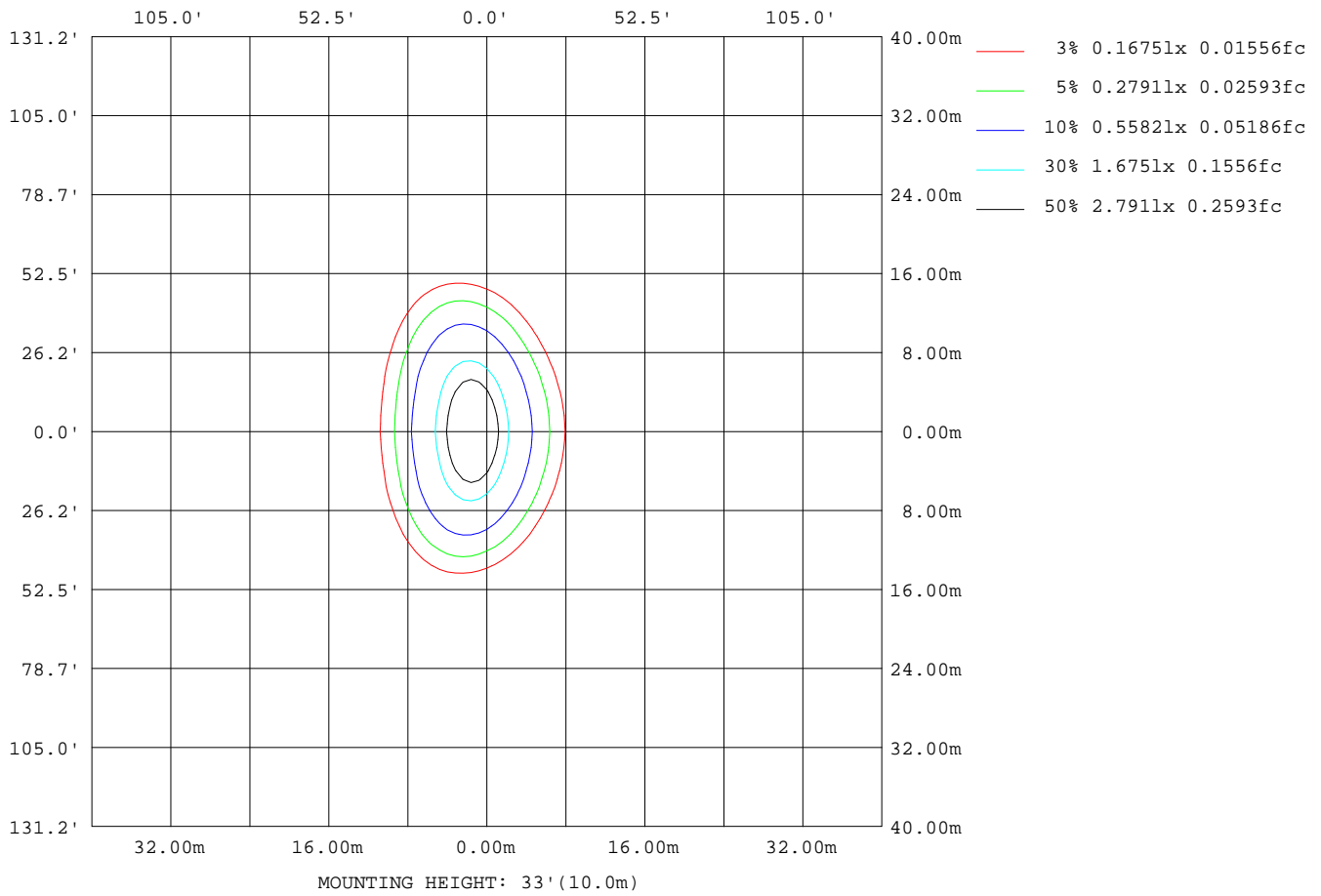
Note:The Curves indicate the illuminated area and the average illumination when the luminaire is at different distance.

C Range: 0 - 360DEG
 C Interval: 5.0DEG
 Test Speed: HIGH
 Temperature:25.3DEG
 Operators:DAMIN
 Test Date:2020-12-22

γ Range: 0 - 180DEG
 γ Interval: 0.5DEG
 Test System:EVERFINE GO-2000A_V1 SYSTEM V2.0.276
 Humidity:65.0%
 Test Distance:10.237m [K=1.0000]
 Remarks:

ISOLUX DIAGRAM

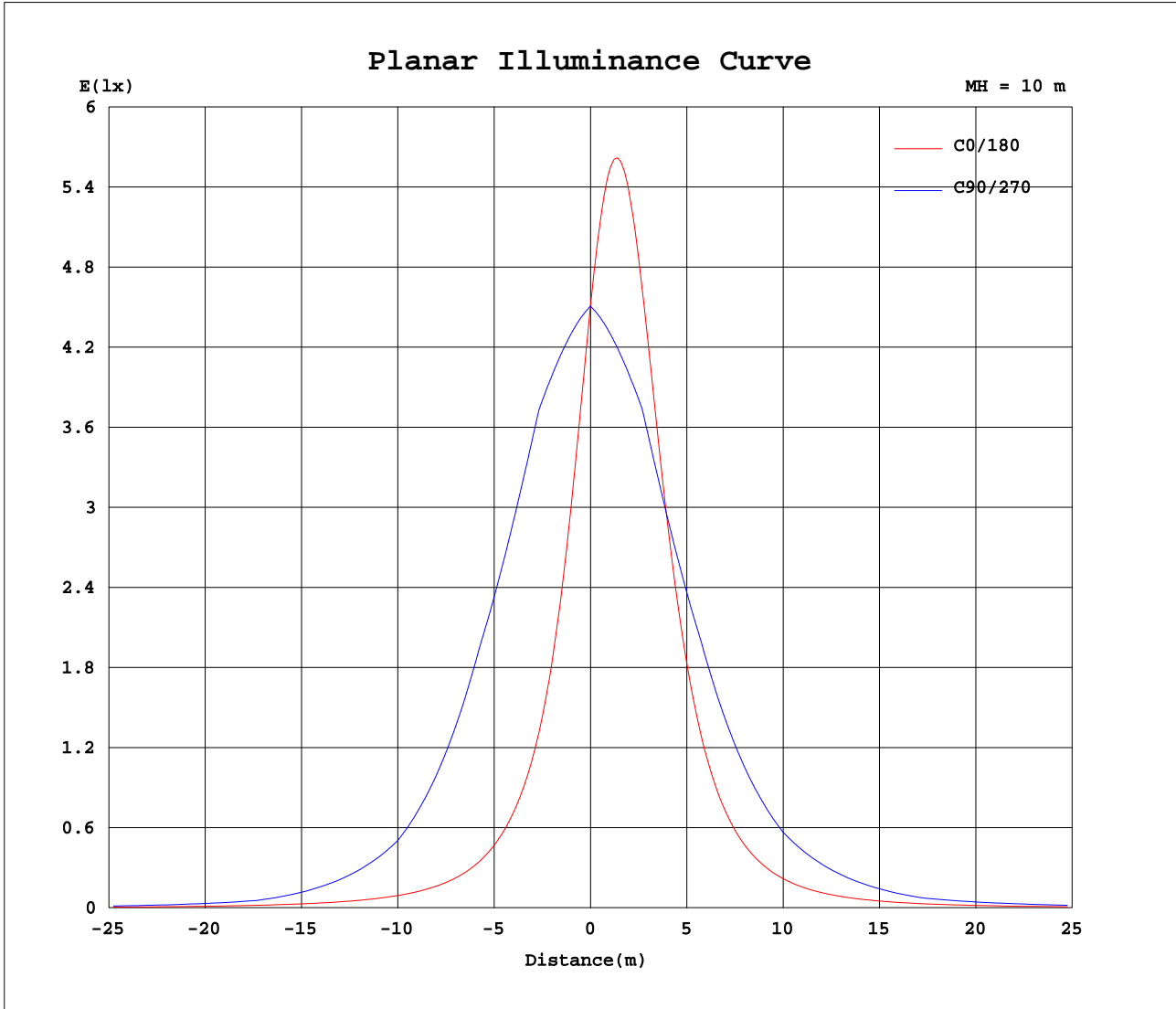
Test:U:240.4V I:0.0440A P:9.810W PF:0.9210 Lamp Flux:1058.68x1 lm		
NAME: SWL-10W-CC-W	TYPE:10W	WEIGHT:
DIM.:	SPEC.:5700K	SERIAL No.:
MFR.:	SUR.:0.0855	PROTECTION ANGLE:



C Range: 0 - 360DEG
 C Interval: 5.0DEG
 Test Speed: HIGH
 Temperature:25.3DEG
 Operators:DAMIN
 Test Date:2020-12-22

γ Range: 0 - 180DEG
 γ Interval: 0.5DEG
 Test System:EVERFINE GO-2000A_V1 SYSTEM V2.0.276
 Humidity:65.0%
 Test Distance:10.237m [K=1.0000]
 Remarks:

Planar Illuminance Curve



C Range: 0 - 360DEG
 C Interval: 5.0DEG
 Test Speed: HIGH
 Temperature: 25.3DEG
 Operators: DAMIN
 Test Date: 2020-12-22

γ Range: 0 - 180DEG
 γ Interval: 0.5DEG
 Test System: EVERFINE GO-2000A_V1 SYSTEM V2.0.276
 Humidity: 65.0%
 Test Distance: 10.237m [K=1.0000]
 Remarks:

LUMINOUS DISTRIBUTION INTENSITY DATA

Test:U:240.4V I:0.0440A P:9.810W PF:0.9210 Lamp Flux:1058.68x1 lm		
NAME: SWL-10W-CC-W	TYPE:10W	WEIGHT:
DIM.:	SPEC.:5700K	SERIAL No.:
MFR.:	SUR.:0.0855	PROTECTION ANGLE:

Table--1

UNIT: cd

C(DEG)\ γ (DEG)	0	5	10	15	20	25	30	35	40	45	50	55	60	65	70	75	80	85	90
0	451	451	451	451	451	451	451	451	451	451	451	451	451	451	451	451	451	451	451
5	323	323	324	325	328	331	335	340	346	353	361	369	378	387	397	407	417	428	438
10	218	217	218	221	225	229	236	244	254	265	278	293	309	326	345	365	385	406	426
15	146	146	147	149	153	158	165	173	184	197	212	229	249	272	297	325	354	384	414
20	101	101	102	104	107	111	117	125	135	147	160	176	195	217	243	273	306	340	376
25	72.4	72.1	72.8	74.4	77.1	81.0	86.1	92.7	99.4	108	119	133	150	171	197	227	261	299	338
30	53.4	53.2	53.7	55.0	57.2	60.4	64.1	68.3	73.8	80.9	89.9	102	116	135	158	187	221	260	299
35	40.8	40.6	41.0	42.1	43.8	45.9	48.3	51.5	56.0	61.7	69.2	78.7	90.5	105	125	149	178	212	247
40	32.2	32.1	32.4	33.2	34.4	35.7	37.5	40.1	43.6	48.0	53.5	60.5	69.5	81.2	96.3	115	139	166	195
45	26.2	26.0	26.3	27.1	27.7	28.6	30.1	32.1	34.6	37.8	41.9	47.1	53.9	62.5	73.6	87.4	104	123	143
50	21.8	21.6	21.9	22.3	22.8	23.6	24.7	26.1	28.0	30.4	33.5	37.3	42.2	48.5	56.7	67.0	79.6	94.2	110
55	18.3	18.1	18.4	18.6	19.0	19.7	20.5	21.6	23.2	25.0	27.3	30.1	33.6	38.0	43.3	49.9	57.8	67.1	77.4
60	15.3	15.2	15.4	15.6	16.0	16.4	17.2	18.1	19.3	20.8	22.5	24.5	26.8	29.4	32.0	34.8	37.7	40.9	44.6
65	12.7	12.6	12.7	13.0	13.2	13.7	14.3	15.0	16.0	17.2	18.6	20.0	21.4	23.0	24.8	26.7	28.6	30.7	33.2
70	10.2	10.2	10.2	10.5	10.8	11.1	11.6	12.3	13.1	14.0	14.9	15.9	17.0	18.1	19.1	20.1	20.6	21.0	21.8
75	7.59	7.59	7.86	8.15	8.41	8.75	9.09	9.45	9.98	10.7	11.5	12.2	12.9	13.5	13.8	13.7	12.9	11.4	10.4
80	4.90	5.02	5.43	5.77	6.02	6.20	6.40	6.70	7.13	7.72	8.32	8.82	9.26	9.60	9.78	9.70	9.11	8.14	7.47
85	2.28	2.68	3.35	3.53	3.71	4.18	4.50	4.79	5.08	5.34	5.59	5.77	5.92	6.02	6.06	5.90	5.50	4.91	4.52
90	1.52	3.71	3.69	3.57	3.45	3.42	3.32	3.25	3.14	3.07	2.94	2.78	2.64	2.46	2.34	2.09	1.86	1.67	1.56
95	4.01	5.60	6.19	6.17	6.12	6.15	6.17	6.27	6.46	6.62	6.75	6.82	6.88	6.97	7.10	7.15	7.17	7.24	7.23
100	6.55	7.11	8.09	8.39	8.57	8.71	8.88	9.24	9.80	10.3	10.6	10.9	11.2	11.5	11.9	12.2	12.5	12.8	12.9
105	8.82	9.11	9.66	10.3	10.6	11.1	11.5	11.9	12.5	13.3	14.1	14.9	15.6	16.3	17.0	17.6	18.0	18.5	18.6
110	11.1	11.2	11.6	12.1	12.7	13.3	13.8	14.6	15.6	16.6	17.7	18.9	20.3	22.0	23.9	26.0	28.2	30.5	32.4
115	13.3	13.5	13.8	14.3	14.9	15.7	16.5	17.4	18.6	20.0	21.6	23.5	25.6	28.1	31.2	34.7	38.6	42.6	46.2
120	15.9	16.0	16.4	16.8	17.5	18.3	19.3	20.6	22.1	23.9	26.2	29.0	32.3	36.2	40.6	45.4	50.3	55.3	60.0
125	19.0	19.0	19.4	19.9	20.6	21.6	22.8	24.4	26.4	28.9	32.0	35.9	41.0	47.2	55.0	64.5	75.5	87.4	98.9
130	22.8	22.8	23.2	23.9	24.7	25.8	27.4	29.4	31.9	35.3	39.6	45.0	51.9	60.8	72.1	86.1	103	120	138
135	27.8	27.8	28.3	29.3	30.2	31.6	33.6	36.4	39.8	44.2	50.0	57.3	66.7	78.6	93.6	112	133	155	177
140	34.9	34.8	35.3	36.5	38.2	40.0	42.6	46.2	51.0	57.0	64.6	74.3	86.7	102	122	147	175	206	235
145	45.2	45.1	45.9	47.4	49.8	52.7	56.1	60.7	66.7	74.6	84.8	97.7	113	133	158	188	222	258	293
150	61.4	61.3	62.2	64.1	67.1	71.4	76.6	82.5	90.2	100	112	128	148	172	202	236	274	314	351
155	86.7	86.5	87.6	89.9	93.7	99.0	106	115	125	137	152	170	193	220	251	285	322	360	394
160	126	126	127	130	135	141	150	160	174	190	208	228	252	279	309	341	374	407	438
165	189	189	190	194	199	206	215	226	240	256	275	296	320	345	372	400	429	456	481
170	285	284	285	288	293	299	307	317	328	341	355	371	387	405	423	442	461	478	495
175	407	407	407	408	411	414	418	423	429	435	442	449	458	466	475	483	492	500	509
180	523	523	523	523	523	523	523	523	523	523	523	523	523	523	523	523	523	523	523

C Range: 0 - 360DEG
 C Interval: 5.0DEG
 Test Speed: HIGH
 Temperature:25.3DEG
 Operators:DAMIN
 Test Date:2020-12-22

γ Range: 0 - 180DEG
 γ Interval: 0.5DEG
 Test System:EVERFINE GO-2000A_V1 SYSTEM V2.0.276
 Humidity:65.0%
 Test Distance:10.237m [K=1.0000]
 Remarks:

LUMINOUS DISTRIBUTION INTENSITY DATA

Test:U:240.4V I:0.0440A P:9.810W PF:0.9210 Lamp Flux:1058.68x1 lm		
NAME: SWL-10W-CC-W	TYPE:10W	WEIGHT:
DIM.:	SPEC.:5700K	SERIAL No.:
MFR.:	SUR.:0.0855	PROTECTION ANGLE:

Table--2

UNIT: cd

C(DEG) γ (DEG)	95	100	105	110	115	120	125	130	135	140	145	150	155	160	165	170	175	180	185
0	451	451	451	451	451	451	451	451	451	451	451	451	451	451	451	451	451	451	451
5	449	460	469	479	488	496	504	512	518	525	530	535	539	543	546	549	551	553	551
10	447	466	483	499	514	526	536	544	551	556	560	563	566	568	570	572	575	577	575
15	444	469	492	511	524	534	539	541	539	536	531	525	520	516	513	511	512	515	513
20	410	441	466	486	498	505	505	500	489	472	456	440	426	415	406	401	400	402	401
25	375	406	430	445	450	446	435	418	399	380	361	338	320	305	294	288	286	287	286
30	337	368	389	398	394	380	358	333	308	284	262	245	228	213	203	197	194	196	195
35	281	310	328	333	326	309	285	257	229	205	185	169	157	147	138	133	131	132	131
40	223	246	260	262	253	235	212	189	167	147	131	117	108	101	94.7	90.4	88.7	89.3	89.1
45	163	181	192	194	186	171	153	134	118	104	92.8	82.5	74.8	69.5	66.0	62.7	61.3	61.8	61.7
50	126	138	144	143	134	121	107	94.7	83.0	73.0	64.9	58.5	52.9	49.0	46.6	44.6	43.6	43.9	44.0
55	87.9	96.8	102	101	95.5	86.5	76.5	66.8	58.3	51.5	45.8	41.5	38.2	35.4	33.7	32.8	32.0	32.3	32.4
60	49.4	54.8	59.6	61.9	61.3	57.8	52.6	46.8	41.4	36.6	32.8	29.9	27.7	26.3	25.1	24.6	24.1	24.4	24.5
65	36.3	39.0	40.7	40.7	39.4	36.9	33.7	31.4	28.7	26.0	23.6	21.7	20.4	19.3	19.0	18.6	18.5	18.7	18.8
70	23.5	25.3	26.6	26.9	26.5	25.3	23.4	21.5	19.6	17.9	16.6	15.1	14.0	13.0	13.0	13.2	14.1	14.3	14.5
75	10.7	11.4	12.5	13.5	14.3	14.5	14.2	13.6	12.8	11.9	10.8	9.38	8.24	7.46	6.95	7.29	9.31	10.5	10.6
80	7.58	7.82	8.17	8.41	8.54	8.44	8.10	7.67	7.22	6.58	6.03	5.13	4.30	3.76	3.23	2.52	2.17	4.52	4.91
85	4.58	4.72	4.91	5.04	5.12	5.06	4.87	4.63	4.25	3.65	3.10	2.42	1.87	1.61	1.36	1.12	0.90	0.67	1.91
90	1.58	1.61	1.64	1.67	1.69	1.72	1.67	1.65	1.36	0.95	0.86	0.86	0.76	0.63	0.57	0.60	0.73	0.58	0.81
95	7.52	7.59	7.58	7.47	7.18	6.75	6.24	5.68	4.84	3.94	3.41	2.92	2.03	1.42	1.39	1.12	1.02	0.51	1.24
100	13.4	13.6	13.5	13.3	12.7	11.9	10.9	9.84	8.54	7.20	6.40	5.89	5.19	4.99	4.95	4.81	4.61	1.88	3.20
105	19.4	20.0	20.4	20.6	20.0	18.9	17.4	15.7	13.9	12.0	10.5	9.70	9.04	8.50	8.22	8.02	7.86	3.54	5.42
110	34.5	35.9	35.9	34.7	32.4	29.4	26.1	23.0	20.1	17.6	15.4	13.9	12.8	12.2	11.6	11.3	11.2	7.94	6.76
115	49.5	51.8	51.5	49.4	45.5	40.9	36.0	31.9	27.9	24.3	21.4	19.1	17.5	16.5	15.9	15.3	15.1	13.4	10.9
120	65.0	69.8	71.7	70.4	65.8	59.2	51.8	44.6	38.2	33.0	29.0	25.8	23.5	22.0	20.7	20.1	19.7	19.4	16.9
125	109	115	114	107	96.5	84.2	72.1	61.4	52.2	44.8	39.2	34.9	31.7	29.1	27.5	26.6	25.8	26.5	24.9
130	152	160	158	148	132	115	98.6	84.0	71.6	61.6	53.8	48.1	43.1	39.6	37.4	35.7	34.8	36.2	35.2
135	195	207	207	197	179	157	135	115	98.8	85.6	75.2	66.1	59.6	55.0	52.0	49.3	48.1	49.9	49.3
140	259	273	273	260	239	212	184	159	138	119	104	92.5	84.0	78.1	73.1	69.6	68.1	70.7	70.3
145	321	338	341	330	308	280	249	217	189	166	147	132	122	112	105	101	98.8	103	103
150	381	401	406	398	378	351	320	288	259	233	211	193	178	165	156	150	148	155	154
155	423	444	454	453	443	424	401	374	348	323	301	278	259	244	234	227	224	235	234
160	463	484	498	504	503	496	483	467	447	423	402	382	365	352	342	336	333	348	346
165	502	520	533	542	545	545	540	532	522	510	499	488	478	471	465	461	461	477	474
170	510	523	535	545	552	558	562	564	565	564	563	562	561	559	559	559	560	571	569
175	517	524	531	538	545	550	555	560	564	567	571	573	576	578	580	582	584	585	584
180	523	523	523	523	523	523	523	523	523	523	523	523	523	523	523	523	523	516	516

C Range: 0 - 360DEG
 C Interval: 5.0DEG
 Test Speed: HIGH
 Temperature:25.3DEG
 Operators:DAMIN
 Test Date:2020-12-22

γ Range: 0 - 180DEG
 γ Interval: 0.5DEG
 Test System:EVERFINE GO-2000A_V1 SYSTEM V2.0.276
 Humidity:65.0%
 Test Distance:10.237m [K=1.0000]
 Remarks:

LUMINOUS DISTRIBUTION INTENSITY DATA

Test:U:240.4V I:0.0440A P:9.810W PF:0.9210 Lamp Flux:1058.68x1 lm		
NAME: SWL-10W-CC-W	TYPE:10W	WEIGHT:
DIM.:	SPEC.:5700K	SERIAL No.:
MFR.:	SUR.:0.0855	PROTECTION ANGLE:

Table--3

UNIT: cd

C(DEG) γ (DEG)	190	195	200	205	210	215	220	225	230	235	240	245	250	255	260	265	270	275	280
0	451	451	451	451	451	451	451	451	451	451	451	451	451	451	451	451	451	451	451
5	549	547	543	540	535	531	525	519	512	505	497	488	479	470	460	449	439	428	418
10	573	571	569	567	565	562	558	553	546	538	528	515	501	484	467	448	427	406	385
15	512	514	518	523	528	534	539	543	545	543	537	528	513	494	471	445	415	384	354
20	403	408	418	430	444	461	478	495	506	511	511	505	491	471	445	413	378	342	307
25	289	297	308	324	344	367	387	408	428	445	456	460	454	438	413	380	341	302	263
30	198	205	216	232	250	269	292	317	345	371	393	407	410	400	377	344	305	264	224
35	134	140	149	160	174	191	213	239	268	299	325	343	350	343	323	293	257	219	183
40	91.3	96.1	103	111	121	136	154	176	201	227	252	272	283	280	265	239	208	176	147
45	63.5	67.3	71.4	77.4	86.0	97.7	111	127	146	168	190	208	218	217	204	184	160	136	114
50	45.4	47.8	50.7	55.4	61.8	69.3	79.0	91.2	106	122	140	155	166	168	160	145	126	107	89.2
55	33.6	34.9	37.2	40.6	44.6	50.0	57.1	66.0	76.8	89.3	102	114	122	123	117	106	92.4	79.1	66.8
60	25.3	26.3	28.0	29.9	32.8	36.7	41.8	48.1	55.5	63.7	71.7	77.7	80.1	78.2	72.6	65.4	58.5	52.2	46.3
65	19.3	20.2	21.1	22.5	24.5	27.1	30.6	34.7	39.3	43.8	49.1	53.6	56.4	56.8	54.6	50.3	45.3	40.4	35.7
70	14.8	15.3	16.0	16.9	18.1	20.0	22.2	25.1	28.4	32.0	35.5	38.4	40.0	40.0	38.4	35.5	32.2	29.1	26.2
75	10.9	11.2	11.7	12.4	13.1	14.3	15.9	17.7	19.7	21.6	23.2	24.1	24.1	23.3	22.0	20.5	19.1	17.9	16.9
80	5.49	6.40	7.23	7.85	8.60	9.56	10.4	11.5	12.6	13.8	14.8	15.5	15.9	15.7	15.2	14.3	13.3	12.4	11.6
85	2.35	2.80	3.23	3.87	4.64	5.37	5.98	6.68	7.38	8.04	8.57	9.00	9.23	9.15	8.79	8.19	7.51	6.94	6.47
90	1.00	1.10	1.22	1.29	1.31	1.43	1.73	2.07	2.31	2.43	2.48	2.56	2.62	2.55	2.37	2.05	1.72	1.51	1.36
95	1.51	1.71	1.83	2.32	2.88	3.52	4.14	4.76	5.41	5.69	5.84	5.90	5.64	6.55	7.45	7.27	6.80	6.52	6.24
100	3.49	3.85	4.38	4.82	5.28	5.89	6.67	7.59	8.62	8.97	9.20	9.24	8.70	10.6	12.5	12.5	11.9	11.5	11.1
105	6.71	6.45	7.13	7.96	8.38	8.59	9.32	10.4	11.9	13.2	14.1	14.5	13.9	16.2	18.2	17.8	17.0	16.6	16.2
110	8.53	9.42	9.63	10.3	11.1	11.6	12.2	13.5	15.8	19.1	22.0	25.7	29.4	32.9	34.2	33.1	30.8	28.6	26.3
115	10.9	12.4	13.0	13.9	14.9	16.1	17.7	19.7	22.5	26.3	31.3	38.7	45.6	49.6	50.3	48.2	44.6	40.6	36.6
120	16.0	17.2	18.3	19.6	21.1	22.7	26.0	30.9	37.0	43.5	50.6	60.5	68.4	70.6	68.4	63.8	58.4	53.2	48.3
125	24.5	25.0	26.5	28.7	30.8	33.9	39.0	46.7	55.6	65.1	77.5	93.1	107	113	114	107	96.9	84.8	72.9
130	35.5	36.7	38.3	41.1	44.9	49.7	56.9	66.8	78.9	93.2	111	131	148	158	159	151	135	117	99.5
135	50.3	52.8	55.2	58.7	64.1	71.2	81.0	94.1	112	134	157	181	199	208	206	193	174	152	129
140	71.8	75.3	80.1	84.9	91.9	102	116	136	161	188	216	243	264	275	273	257	231	201	170
145	105	109	117	125	135	149	169	195	224	256	287	315	335	344	338	319	288	253	216
150	157	163	172	185	201	219	241	268	298	329	360	386	404	409	401	378	345	307	267
155	237	244	255	269	289	312	335	359	386	411	433	450	458	456	443	419	388	352	314
160	349	355	365	378	395	414	436	459	478	493	503	508	507	498	482	459	431	399	366
165	475	478	483	491	500	510	521	531	539	545	549	547	542	532	516	497	474	448	420
170	568	567	567	568	568	569	569	568	566	563	558	551	542	532	519	504	488	471	452
175	582	580	578	575	572	569	566	562	557	552	546	540	533	526	519	510	502	493	484
180	516	516	516	516	516	516	516	516	516	516	516	516	516	516	516	516	516	516	516

C Range: 0 - 360DEG
 C Interval: 5.0DEG
 Test Speed: HIGH
 Temperature:25.3DEG
 Operators:DAMIN
 Test Date:2020-12-22

γ Range: 0 - 180DEG
 γ Interval: 0.5DEG
 Test System:EVERFINE GO-2000A_V1 SYSTEM V2.0.276
 Humidity:65.0%
 Test Distance:10.237m [K=1.0000]
 Remarks:

LUMINOUS DISTRIBUTION INTENSITY DATA

Test:U:240.4V I:0.0440A P:9.810W PF:0.9210 Lamp Flux:1058.68x1 lm		
NAME: SWL-10W-CC-W	TYPE:10W	WEIGHT:
DIM.:	SPEC.:5700K	SERIAL No.:
MFR.:	SUR.:0.0855	PROTECTION ANGLE:

Table--4

UNIT: cd

C(DEG) γ (DEG)	285	290	295	300	305	310	315	320	325	330	335	340	345	350	355				
0	451	451	451	451	451	451	451	451	451	451	451	451	451	451	451				
5	407	397	387	378	369	361	353	346	340	335	331	328	325	324	323				
10	365	345	326	309	293	278	265	254	244	236	229	224	221	218	217				
15	325	297	272	249	229	211	197	184	173	165	158	153	149	147	146				
20	274	244	218	195	176	161	147	135	125	118	112	107	104	102	101				
25	228	198	172	151	133	120	109	99.9	93.1	86.5	81.3	77.4	74.7	73.0	72.2				
30	190	160	136	118	103	90.9	81.8	74.6	68.9	64.7	60.9	57.6	55.3	53.9	53.3				
35	153	128	108	92.2	80.1	70.4	62.8	56.9	52.3	48.9	46.4	44.3	42.4	41.2	40.7				
40	121	100	84.2	71.8	62.3	54.9	49.2	44.5	40.9	38.2	36.2	34.9	33.6	32.6	32.2				
45	94.4	78.4	66.0	56.4	49.0	43.3	38.9	35.5	32.9	30.7	29.2	28.1	27.4	26.5	26.1				
50	73.8	61.5	51.9	44.7	39.1	34.8	31.5	28.9	26.8	25.4	24.1	23.2	22.6	22.1	21.7				
55	56.3	47.8	41.1	35.8	31.6	28.5	26.0	23.9	22.3	21.1	20.2	19.5	18.9	18.7	18.3				
60	40.9	36.2	32.1	28.6	25.7	23.4	21.5	19.9	18.7	17.7	16.9	16.5	16.0	15.7	15.4				
65	31.5	28.0	25.1	22.8	20.8	19.2	17.8	16.5	15.5	14.8	14.2	13.7	13.4	13.1	12.8				
70	23.6	21.4	19.5	17.9	16.5	15.4	14.4	13.5	12.6	12.0	11.6	11.2	10.9	10.6	10.4				
75	16.0	15.1	14.2	13.3	12.5	11.8	11.0	10.2	9.70	9.36	9.04	8.74	8.55	8.22	7.88				
80	10.9	10.3	9.73	9.24	8.80	8.37	7.83	7.26	6.82	6.51	6.38	6.27	6.09	5.86	5.37				
85	6.11	5.79	5.52	5.36	5.19	5.09	4.89	4.63	4.41	4.20	4.00	3.77	3.66	3.62	3.24				
90	1.34	1.31	1.36	1.52	1.65	1.88	2.02	2.13	2.24	2.36	2.52	2.63	2.76	2.88	3.02				
95	6.04	5.84	5.76	5.70	5.59	5.58	5.46	5.29	5.17	5.10	5.10	5.21	5.24	5.27	5.01				
100	10.8	10.4	10.2	9.92	9.59	9.33	8.99	8.53	8.04	7.72	7.60	7.60	7.53	7.42	7.10				
105	15.8	15.3	14.9	14.3	13.5	12.8	12.1	11.3	10.7	10.3	10.0	9.75	9.66	9.45	9.20				
110	24.1	22.1	20.5	18.9	17.6	16.3	15.3	14.3	13.4	12.8	12.3	11.9	11.7	11.5	11.4				
115	32.8	29.4	26.5	24.1	22.1	20.3	18.7	17.4	16.3	15.4	14.8	14.4	14.1	13.8	13.6				
120	43.3	38.7	34.4	30.7	27.6	24.9	22.7	21.0	19.6	18.5	17.6	17.2	16.7	16.4	16.1				
125	62.1	52.8	45.3	39.3	34.5	30.7	27.8	25.3	23.5	22.1	21.1	20.3	19.8	19.5	19.1				
130	83.2	69.5	58.5	50.0	43.4	38.2	34.2	31.0	28.6	26.8	25.4	24.3	23.7	23.2	22.8				
135	108	90.5	75.9	64.4	55.4	48.4	42.9	38.8	35.6	33.0	31.1	29.8	29.0	28.0	27.6				
140	142	118	99.0	83.8	71.9	62.6	55.4	49.6	45.1	41.7	39.3	37.6	36.0	34.9	34.4				
145	183	153	129	110	94.5	82.2	72.5	65.0	59.2	54.8	51.6	48.8	46.5	45.0	44.3				
150	229	195	166	143	124	109	97.0	87.6	80.2	74.6	69.7	65.5	62.6	60.7	59.9				
155	277	243	213	186	165	147	133	121	112	103	96.2	91.1	87.4	85.2	84.1				
160	332	300	271	244	221	201	183	168	155	145	137	131	126	123	122				
165	391	363	336	310	287	266	248	232	219	208	199	192	187	184	183				
170	433	414	396	378	361	345	331	318	307	297	290	284	279	276	275				
175	475	466	457	448	440	433	425	419	413	408	404	401	398	397	396				
180	516	516	516	516	516	516	516	516	516	516	516	516	516	516	516				

C Range: 0 - 360DEG
 C Interval: 5.0DEG
 Test Speed: HIGH
 Temperature:25.3DEG
 Operators:DAMIN
 Test Date:2020-12-22

γ Range: 0 - 180DEG
 γ Interval: 0.5DEG
 Test System:EVERFINE GO-2000A_V1 SYSTEM V2.0.276
 Humidity:65.0%
 Test Distance:10.237m [K=1.0000]
 Remarks: