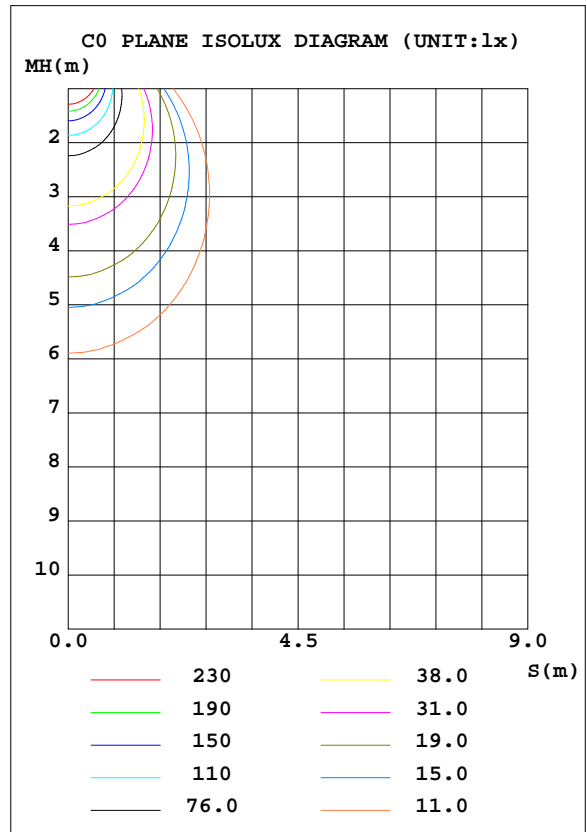
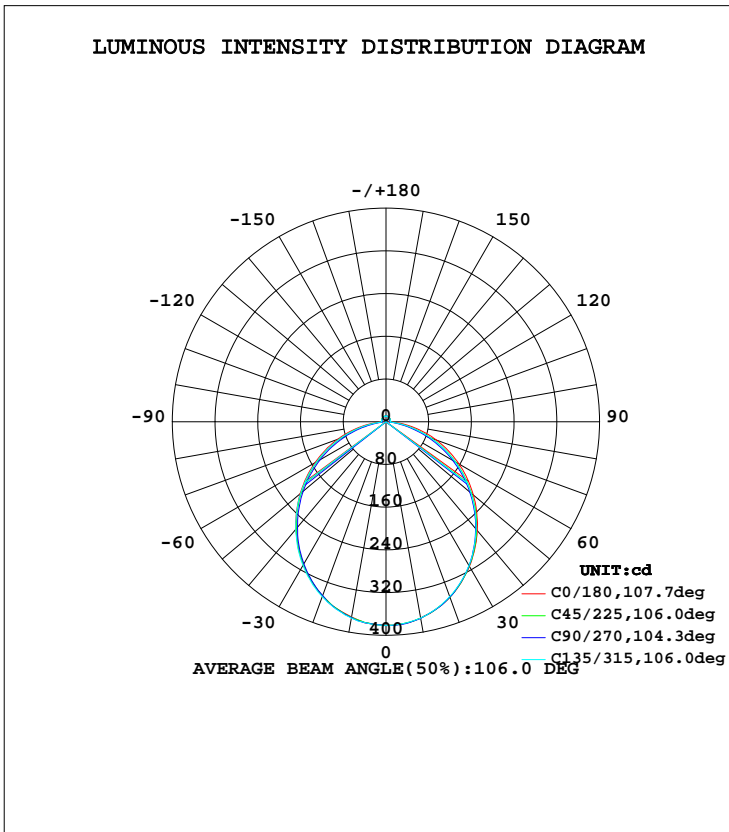


LUMINAIRE PHOTOMETRIC TEST REPORT

Test:U:240.2V I:0.0360A P:8.070W PF:0.9090 Lamp Flux:1067.29x1 lm		
NAME: ID-S-10W-CC	TYPE:8W	WEIGHT:
DIM.:	SPEC.:4000K	SERIAL No.:1
MFR.:	SUR.:0.04	PROTECTION ANGLE:

DATA OF LAMP		PHOTOMETRIC DATA Eff: 132.25 lm/W			
MODEL	ID-S-10W-CC	I _{max} (cd)	381.5	S/MH(C0/180)	1.21
NOMINAL POWER(W)	8	LOR(%)	100.0	S/MH(C90/270)	1.21
RATED VOLTAGE(V)	240	TOTAL FLUX(lm)	1067.3	η UP, DN(C0-180)	2.6, 47.1
NOMINAL FLUX(lm)	1067.29	CIE CLASS	DIRECT	η UP, DN(C180-360)	2.6, 47.6
LAMPS INSIDE	1	η up(%)	5.3	CIBSE SHR NOM	1.25
TEST VOLTAGE(V)	240.2	η down(%)	94.7	CIBSE SHR MAX	1.35



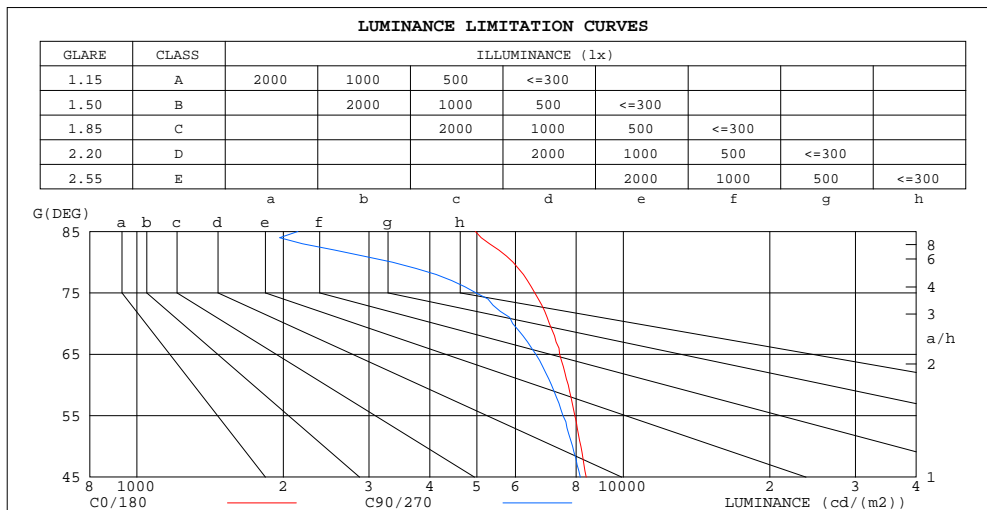
C Range: 0 - 360DEG
 C Interval: 45.0DEG
 Test Speed: HIGH
 Temperature:25.3DEG
 Operators:DAMIN
 Test Date:2021-11-11

γ Range: 0 - 180DEG
 γ Interval: 1.0DEG
 Test System:EVERFINE GO-2000A_V1 SYSTEM V2.0.276
 Humidity:65.0%
 Test Distance:10.237m [K=1.0000]
 Remarks:

ZONAL FLUX DIAGRAM
AND LUMINANCE LIMITATION CURVES

ZONAL FLUX DIAGRAM:

γ	C0	C45	C90	C135	C180	C225	C270	C315	γ	Φ zone	Φ total	Φ lum,lamp
10	371.5	371.9	372.3	373.4	373.4	373.4	374.2	373.3	0- 10	36.00	36.00	3.37,3.37
20	347.5	347.1	346.7	348.8	349.9	349.9	349.2	348.3	10- 20	102.2	138.2	13,13
30	309.7	309.0	307.5	310.7	312.6	312.1	311.0	310.7	20- 30	152.4	290.6	27.2,27.2
40	262.6	261.2	258.0	263.1	265.9	263.6	261.4	262.5	30- 40	179.7	470.3	44.1,44.1
50	210.1	206.6	202.4	208.6	213.6	209.3	204.9	207.7	40- 50	181.8	652.1	61.1,61.1
60	153.9	148.3	142.4	150.1	157.8	150.5	144.1	149.1	50- 60	160.0	812.0	76.1,76.1
70	96.25	89.35	81.13	90.69	100.6	90.17	82.03	89.08	60- 70	118.4	930.4	87.2,87.2
80	41.13	32.34	23.29	33.49	44.36	32.47	25.54	32.48	70- 80	64.26	994.7	93.2,93.2
90	7.033	8.135	6.786	8.010	7.706	8.404	7.249	8.403	80- 90	16.47	1011	94.7,94.7
100	7.586	8.693	7.362	8.333	7.248	8.943	7.066	8.491	90-100	8.710	1020	95.6,95.6
110	8.023	9.002	7.783	8.597	8.466	8.801	7.982	8.672	100-110	8.579	1028	96.4,96.4
120	8.501	9.334	8.404	8.849	8.328	9.067	8.749	8.988	110-120	8.513	1037	97.2,97.2
130	9.097	9.620	9.057	9.356	9.092	9.131	9.481	9.475	120-130	8.090	1045	97.9,97.9
140	9.475	10.21	9.178	9.785	9.494	9.649	9.333	9.925	130-140	7.341	1052	98.6,98.6
150	9.721	10.29	9.711	10.19	9.835	10.26	9.703	9.966	140-150	6.156	1059	99.2,99.2
160	10.21	10.96	10.34	10.40	10.19	10.59	10.20	10.28	150-160	4.719	1063	99.6,99.6
170	10.35	10.96	10.33	10.59	11.04	10.51	10.87	10.54	160-170	2.985	1066	99.9,99.9
180	10.48	10.99	10.87	11.12	10.88	11.13	11.11	10.78	170-180	1.026	1067	100,100
DEG	LUMINOUS INTENSITY:cd									UNIT:lm		



LUMINANCE cd/(m2)		
G(DEG)	C0/180	C90/270
85	4964	2143
80	5932	3350
75	6576	4979
70	7047	5925
65	7398	6607
60	7708	7115
55	7948	7518
50	8184	7863
45	8388	8154

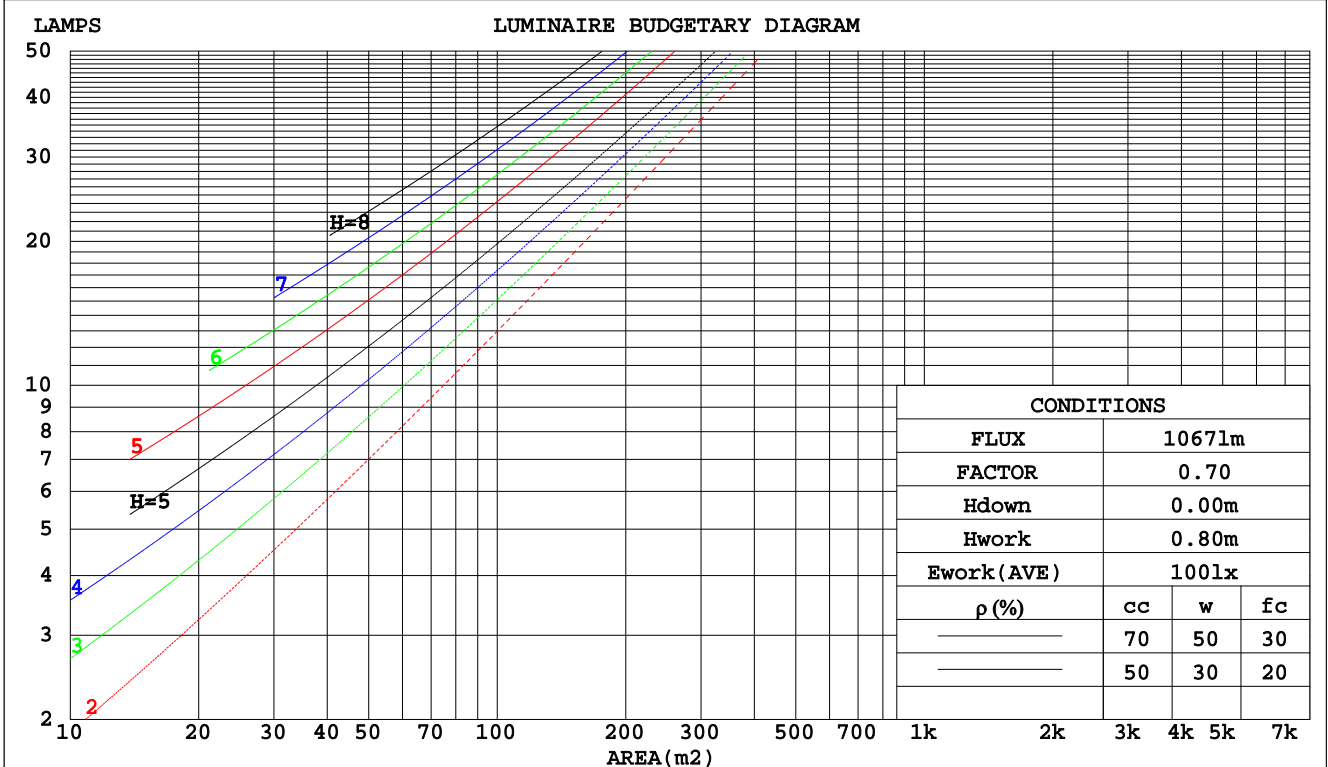
C Range: 0 - 360DEG
C Interval: 45.0DEG
Test Speed: HIGH
Temperature:25.3DEG
Operators:DAMIN
Test Date:2021-11-11

γ Range: 0 - 180DEG
 γ Interval: 1.0DEG
Test System:EVERFINE GO-2000A_V1 SYSTEM V2.0.276
Humidity:65.0%
Test Distance:10.237m [K=1.0000]
Remarks:

CU AND LUMINAIRE BUDGETARY ESTIMATE DIAGRAM

Test:U:240.2V I:0.0360A P:8.070W PF:0.9090 Lamp Flux:1067.29x1 lm		
NAME: ID-S-10W-CC	TYPE:8W	WEIGHT:
DIM.:	SPEC.:4000K	SERIAL No.:1
MFR.:	SUR.:0.04	PROTECTION ANGLE:

pcc	80%			70%			50%			30%			10%			0
	50%	30%	10%	50%	30%	10%	50%	30%	10%	50%	30%	10%	50%	30%	10%	0
pw																
pfc	20%			20%			20%			20%			20%			0
RCR	RCR:Room Cavity Ratio															
	Coefficients of Utilization(CU)															
0.0	1.18	1.18	1.18	1.14	1.14	1.14	1.08	1.08	1.08	1.02	1.02	1.02	.97	.97	.97	.95
1.0	1.03	.99	.95	1.00	.97	.93	.95	.92	.89	.90	.88	.86	.86	.84	.82	.80
2.0	.90	.84	.78	.88	.82	.77	.83	.78	.74	.79	.75	.72	.76	.72	.69	.67
3.0	.79	.71	.65	.77	.70	.64	.74	.67	.62	.70	.65	.61	.67	.63	.59	.56
4.0	.70	.62	.55	.69	.61	.55	.66	.59	.53	.63	.57	.52	.60	.55	.51	.48
5.0	.63	.54	.48	.62	.53	.47	.59	.52	.46	.56	.50	.45	.54	.49	.44	.42
6.0	.57	.48	.42	.55	.47	.41	.53	.46	.40	.51	.45	.40	.49	.43	.39	.37
7.0	.51	.43	.37	.50	.42	.36	.48	.41	.36	.47	.40	.35	.45	.39	.35	.33
8.0	.47	.39	.33	.46	.38	.33	.44	.37	.32	.43	.36	.32	.41	.35	.31	.29
9.0	.43	.35	.30	.42	.35	.29	.41	.34	.29	.39	.33	.29	.38	.32	.28	.26
10.0	.40	.32	.27	.39	.32	.27	.38	.31	.26	.36	.30	.26	.35	.30	.26	.24



C Range: 0 - 360DEG
 C Interval: 45.0DEG
 Test Speed: HIGH
 Temperature:25.3DEG
 Operators:DAMIN
 Test Date:2021-11-11

γ Range: 0 - 180DEG
 γ Interval: 1.0DEG
 Test System:EVERFINE GO-2000A_V1 SYSTEM V2.0.276
 Humidity:65.0%
 Test Distance:10.237m [K=1.0000]
 Remarks:

WEC AND CCEC

Test:U:240.2V I:0.0360A P:8.070W PF:0.9090 Lamp Flux:1067.29x1 lm		
NAME: ID-S-10W-CC	TYPE:8W	WEIGHT:
DIM.:	SPEC.:4000K	SERIAL No.:1
MFR.:	SUR.:0.04	PROTECTION ANGLE:

ρcc	80%			70%			50%			30%			10%			0
ρw	50%	30%	10%	50%	30%	10%	50%	30%	10%	50%	30%	10%	50%	30%	10%	0
ρfc	20%			20%			20%			20%			20%			0
RCR	RCR:Room Cavity Ratio						Wall Exitance Coefficients(WEC)									
0.0																
1.0	.299	.170	.054	.290	.165	.053	.274	.157	.050	.259	.149	.048	.245	.142	.046	
2.0	.282	.155	.047	.275	.151	.047	.260	.145	.045	.247	.139	.043	.235	.133	.042	
3.0	.262	.139	.042	.255	.137	.041	.242	.131	.040	.230	.126	.039	.219	.122	.038	
4.0	.242	.126	.037	.236	.124	.037	.225	.119	.036	.214	.115	.035	.204	.111	.034	
5.0	.225	.114	.033	.219	.113	.033	.209	.109	.032	.199	.105	.031	.190	.102	.031	
6.0	.209	.105	.030	.204	.103	.030	.195	.100	.029	.186	.097	.028	.178	.094	.028	
7.0	.194	.096	.027	.190	.095	.027	.182	.092	.026	.174	.089	.026	.166	.086	.025	
8.0	.182	.089	.025	.178	.088	.025	.170	.085	.024	.163	.083	.024	.156	.080	.023	
9.0	.171	.083	.023	.167	.081	.023	.160	.079	.022	.154	.077	.022	.147	.075	.022	
10.0	.161	.077	.021	.157	.076	.021	.151	.074	.021	.145	.072	.020	.139	.070	.020	

ρcc	80%			70%			50%			30%			10%			0
ρw	50%	30%	10%	50%	30%	10%	50%	30%	10%	50%	30%	10%	50%	30%	10%	0
ρfc	20%			20%			20%			20%			20%			0
RCR	RCR:Room Cavity Ratio						Ceiling Cavity Exitance Coefficients(CCEC)									
0.0	.231	.231	.231	.197	.197	.197	.134	.134	.134	.077	.077	.077	.025	.025	.025	
1.0	.220	.197	.176	.188	.169	.151	.129	.116	.105	.074	.067	.061	.024	.022	.020	
2.0	.212	.173	.140	.181	.149	.121	.124	.103	.084	.072	.060	.049	.023	.019	.016	
3.0	.204	.155	.116	.175	.134	.101	.120	.093	.071	.069	.054	.042	.022	.018	.014	
4.0	.196	.142	.100	.168	.123	.087	.116	.085	.061	.067	.050	.036	.022	.016	.012	
5.0	.189	.132	.089	.162	.114	.078	.112	.080	.055	.065	.047	.033	.021	.015	.011	
6.0	.182	.123	.081	.156	.107	.071	.108	.075	.050	.063	.044	.030	.020	.014	.010	
7.0	.175	.116	.075	.151	.101	.066	.104	.071	.046	.061	.042	.028	.020	.014	.009	
8.0	.169	.111	.071	.145	.096	.062	.101	.067	.044	.059	.040	.026	.019	.013	.009	
9.0	.163	.106	.067	.140	.092	.059	.097	.065	.042	.057	.038	.025	.018	.013	.008	
10.0	.157	.102	.064	.136	.088	.056	.094	.062	.040	.055	.037	.024	.018	.012	.008	

C Range: 0 - 360DEG
 C Interval: 45.0DEG
 Test Speed: HIGH
 Temperature:25.3DEG
 Operators:DAMIN
 Test Date:2021-11-11

γ Range: 0 - 180DEG
 γ Interval: 1.0DEG
 Test System:EVERFINE GO-2000A_V1 SYSTEM V2.0.276
 Humidity:65.0%
 Test Distance:10.237m [K=1.0000]
 Remarks:

Uncorrected UGR Table

Test:U:240.2V I:0.0360A P:8.070W PF:0.9090 Lamp Flux:1067.29x1 lm										
NAME: ID-S-10W-CC					TYPE:8W			WEIGHT:		
DIM.:					SPEC.:4000K			SERIAL No.:1		
MFR.:					SUR.:0.04			PROTECTION ANGLE:		
ceiling/cavity	0.7	0.7	0.5	0.5	0.3	0.7	0.7	0.5	0.5	0.3
walls	0.5	0.3	0.5	0.3	0.3	0.5	0.3	0.5	0.3	0.3
working plane	0.2	0.2	0.2	0.2	0.2	0.2	0.2	0.2	0.2	0.2
Room dimensions	Viewed crosswise					Viewed endwise				
x = 2H y = 2H	19.7	21.1	20.1	21.4	21.7	19.5	20.9	19.8	21.2	21.5
3H	21.2	22.5	21.6	22.8	23.2	20.8	22.1	21.1	22.4	22.7
4H	21.8	23.0	22.2	23.4	23.7	21.2	22.4	21.6	22.8	23.1
6H	22.2	23.4	22.6	23.8	24.1	21.4	22.5	21.8	22.9	23.3
8H	22.4	23.5	22.8	23.9	24.2	21.4	22.5	21.8	22.9	23.3
12H	22.4	23.5	22.8	23.9	24.3	21.4	22.4	21.8	22.8	23.2
4H 2H	20.2	21.5	20.6	21.8	22.2	20.1	21.3	20.4	21.6	22.0
3H	21.9	23.0	22.3	23.4	23.8	21.5	22.6	21.9	23.0	23.4
4H	22.6	23.6	23.1	24.0	24.5	22.1	23.0	22.5	23.5	23.9
6H	23.2	24.0	23.6	24.5	24.9	22.3	23.2	22.8	23.7	24.1
8H	23.3	24.1	23.8	24.6	25.1	22.4	23.2	22.9	23.6	24.1
12H	23.4	24.2	23.9	24.6	25.2	22.4	23.1	22.9	23.6	24.1
8H 4H	22.8	23.6	23.3	24.1	24.6	22.3	23.1	22.8	23.6	24.1
6H	23.4	24.1	24.0	24.6	25.1	22.7	23.4	23.2	23.8	24.4
8H	23.7	24.3	24.2	24.8	25.3	22.8	23.3	23.3	23.9	24.4
12H	23.8	24.3	24.4	24.9	25.5	22.8	23.3	23.3	23.8	24.4
12H 4H	22.8	23.5	23.3	24.0	24.5	22.3	23.0	22.8	23.5	24.0
6H	23.5	24.0	24.0	24.6	25.1	22.7	23.3	23.3	23.8	24.4
8H	23.7	24.2	24.3	24.8	25.3	22.8	23.3	23.4	23.8	24.4
Variations with the observer position at spacings:										
S = 1.0H	+ 0.2 / - 0.2					+ 0.2 / - 0.3				
1.5H	+ 0.2 / - 0.3					+ 0.2 / - 0.4				
2.0H	+ 0.2 / - 0.3					+ 0.2 / - 0.4				

CIE Pub.117 Corrected 1067 lm Total Lamp Luminous Flux.(8log(F/F0) = 0.2)

C Range: 0 - 360DEG
 C Interval: 45.0DEG
 Test Speed: HIGH
 Temperature:25.3DEG
 Operators:DAMIN
 Test Date:2021-11-11

γ Range: 0 - 180DEG
 γ Interval: 1.0DEG
 Test System:EVERFINE GO-2000A_V1 SYSTEM V2.0.276
 Humidity:65.0%
 Test Distance:10.237m [K=1.0000]
 Remarks:

UTILIZATION FACTORS TABLE

Test:U:240.2V I:0.0360A P:8.070W PF:0.9090 Lamp Flux:1067.29x1 lm		
NAME: ID-S-10W-CC	TYPE:8W	WEIGHT:
DIM.:	SPEC.:4000K	SERIAL No.:1
MFR.:	SUR.:0.04	PROTECTION ANGLE:

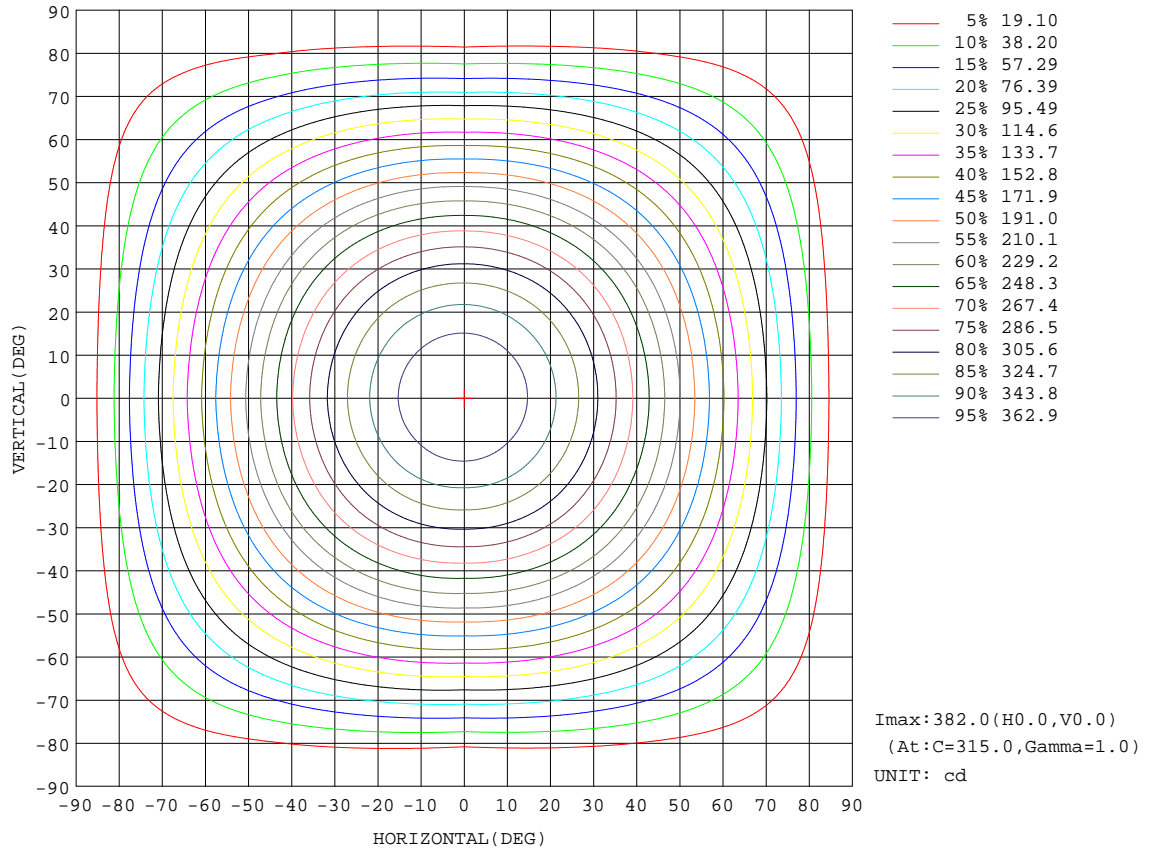
REFLECTANCE										
Ceiling	0.8	0.8	0.8	0.7	0.7	0.7	0.5	0.5	0.5	0
Walls	0.7	0.5	0.3	0.7	0.5	0.3	0.7	0.5	0.3	0
Working plane	0.2	0.2	0.2	0.2	0.2	0.2	0.2	0.2	0.2	0
ROOM INDEX	UTILIZATION FACTORS(PERCENT) $k(RI) \times RCR = 5$									
k = 0.60	57	46	39	56	45	39	55	45	38	32
0.80	67	55	48	66	55	48	64	54	47	40
1.00	75	64	57	74	64	57	71	64	56	48
1.25	82	72	65	81	71	64	77	69	63	55
1.50	87	77	70	85	76	70	82	74	68	60
2.00	94	85	79	92	84	78	88	81	76	67
2.50	98	90	84	95	88	83	91	85	80	71
3.00	101	94	89	99	92	87	94	89	85	75
4.00	105	99	95	102	97	93	97	93	90	79
5.00	108	103	99	105	100	97	99	96	93	82
ROOM INDEX	UF(total)									Direct
According to DIN EN 13032-2 2004			Suspended				SHRNOM = 1.25			

C Range: 0 - 360DEG
 C Interval: 45.0DEG
 Test Speed: HIGH
 Temperature:25.3DEG
 Operators:DAMIN
 Test Date:2021-11-11

γ Range: 0 - 180DEG
 γ Interval: 1.0DEG
 Test System:EVERFINE GO-2000A_V1 SYSTEM V2.0.276
 Humidity:65.0%
 Test Distance:10.237m [K=1.0000]
 Remarks:

ISOCANDELA DIAGRAM

Test:U:240.2V I:0.0360A P:8.070W PF:0.9090 Lamp Flux:1067.29x1 lm		
NAME: ID-S-10W-CC	TYPE:8W	WEIGHT:
DIM.:	SPEC.:4000K	SERIAL No.:1
MFR.:	SUR.:0.04	PROTECTION ANGLE:

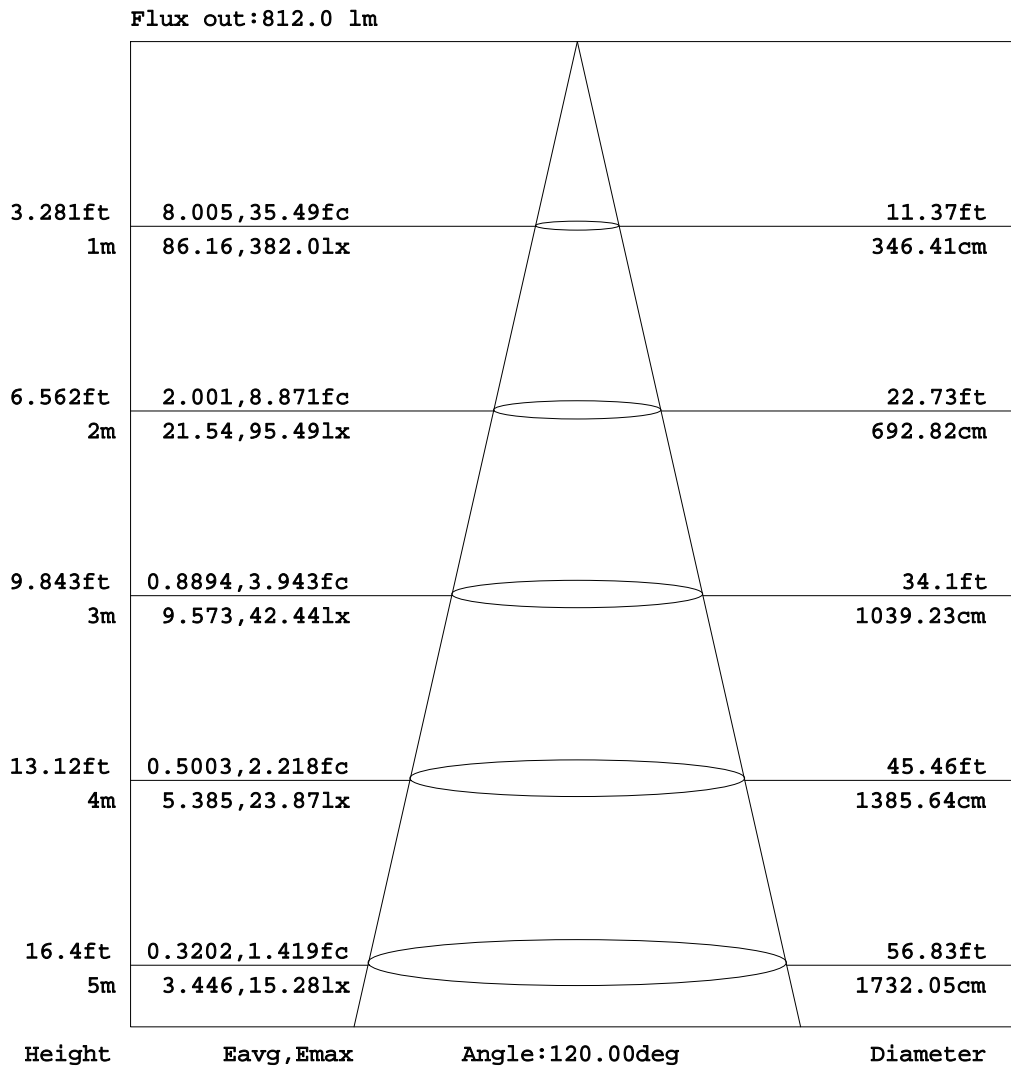


C Range: 0 - 360DEG
 C Interval: 45.0DEG
 Test Speed: HIGH
 Temperature:25.3DEG
 Operators:DAMIN
 Test Date:2021-11-11

γ Range: 0 - 180DEG
 γ Interval: 1.0DEG
 Test System:EVERFINE GO-2000A_V1 SYSTEM V2.0.276
 Humidity:65.0%
 Test Distance:10.237m [K=1.0000]
 Remarks:

AAI Figure

Test:U:240.2V I:0.0360A P:8.070W PF:0.9090 Lamp Flux:1067.29x1 lm		
NAME: ID-S-10W-CC	TYPE:8W	WEIGHT:
DIM.:	SPEC.:4000K	SERIAL No.:1
MFR.:	SUR.:0.04	PROTECTION ANGLE:



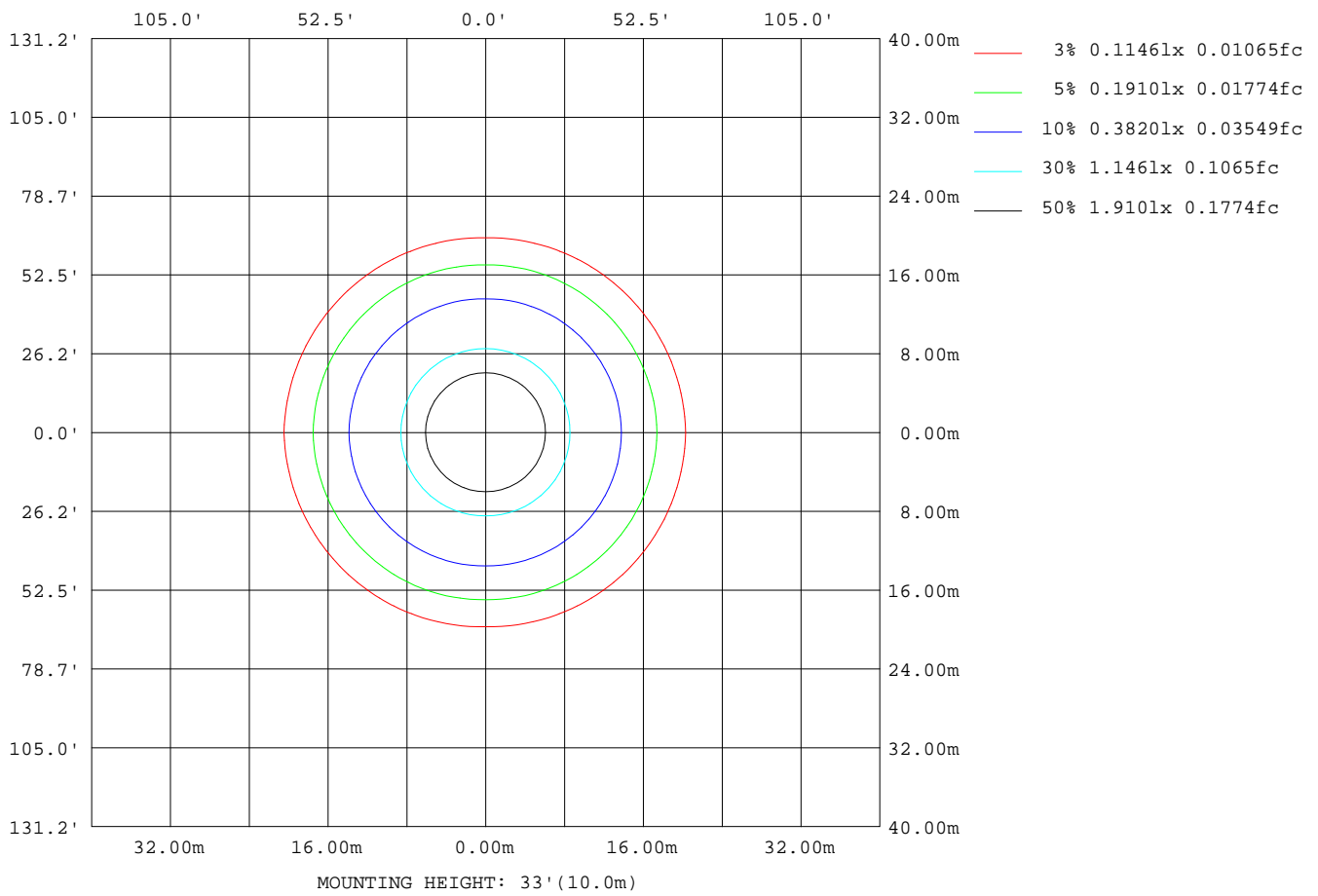
Note:The Curves indicate the illuminated area and the average illumination when the luminaire is at different distance.

C Range: 0 - 360DEG
 C Interval: 45.0DEG
 Test Speed: HIGH
 Temperature:25.3DEG
 Operators:DAMIN
 Test Date:2021-11-11

γ Range: 0 - 180DEG
 γ Interval: 1.0DEG
 Test System:EVERFINE GO-2000A_V1 SYSTEM V2.0.276
 Humidity:65.0%
 Test Distance:10.237m [K=1.0000]
 Remarks:

ISOLUX DIAGRAM

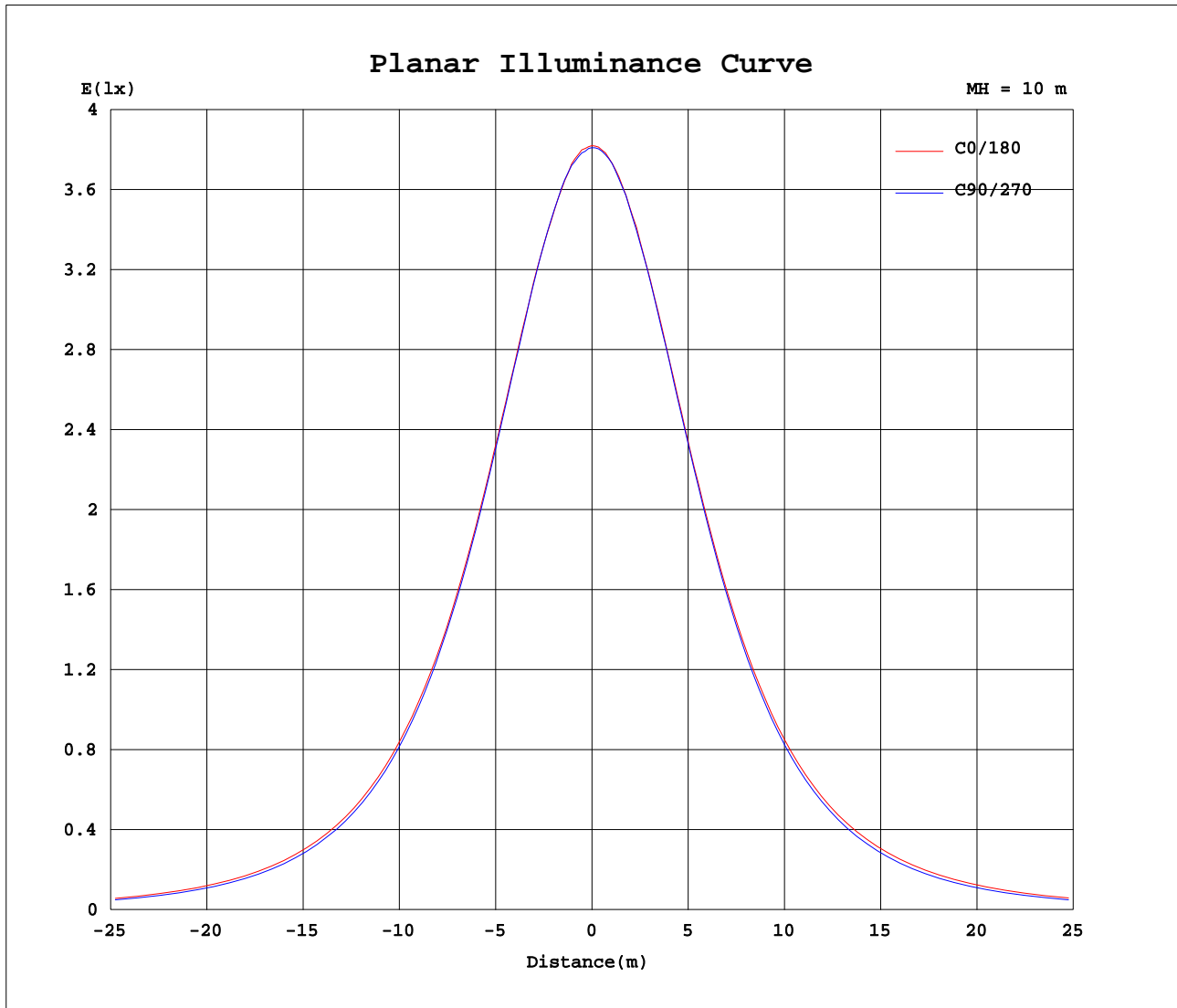
Test:U:240.2V I:0.0360A P:8.070W PF:0.9090 Lamp Flux:1067.29x1 lm		
NAME: ID-S-10W-CC	TYPE:8W	WEIGHT:
DIM.:	SPEC.:4000K	SERIAL No.:1
MFR.:	SUR.:0.04	PROTECTION ANGLE:



C Range: 0 - 360DEG
 C Interval: 45.0DEG
 Test Speed: HIGH
 Temperature:25.3DEG
 Operators:DAMIN
 Test Date:2021-11-11

γ Range: 0 - 180DEG
 γ Interval: 1.0DEG
 Test System:EVERFINE GO-2000A_V1 SYSTEM V2.0.276
 Humidity:65.0%
 Test Distance:10.237m [K=1.0000]
 Remarks:

Planar Illuminance Curve



C Range: 0 - 360DEG
 C Interval: 45.0DEG
 Test Speed: HIGH
 Temperature: 25.3DEG
 Operators: DAMIN
 Test Date: 2021-11-11

γ Range: 0 - 180DEG
 γ Interval: 1.0DEG
 Test System: EVERFINE GO-2000A_V1 SYSTEM V2.0.276
 Humidity: 65.0%
 Test Distance: 10.237m [K=1.0000]
 Remarks:

LUMINOUS DISTRIBUTION INTENSITY DATA

Test:U:240.2V I:0.0360A P:8.070W PF:0.9090 Lamp Flux:1067.29x1 lm		
NAME: ID-S-10W-CC	TYPE:8W	WEIGHT:
DIM.:	SPEC.:4000K	SERIAL No.:1
MFR.:	SUR.:0.04	PROTECTION ANGLE:

Table--1

UNIT: cd

C(DEG) γ (DEG)	0	45	90	135	180	225	270	315											
0	381	381	381	381	381	381	381	381											
5	379	378	379	379	379	379	380	379											
10	371	372	372	373	373	373	374	373											
15	362	361	362	363	363	363	363	363											
20	347	347	347	349	350	350	349	348											
25	330	329	329	331	333	332	332	331											
30	310	309	308	311	313	312	311	311											
35	287	286	284	288	290	289	287	287											
40	263	261	258	263	266	264	261	262											
45	237	235	231	236	240	237	234	236											
50	210	207	202	209	214	209	205	208											
55	182	178	173	180	186	180	175	179											
60	154	148	142	150	158	151	144	149											
65	125	119	112	120	129	121	113	119											
70	96.2	89.4	81.1	90.7	101	90.2	82.0	89.1											
75	68.0	59.9	51.6	60.9	71.9	60.3	52.2	59.9											
80	41.1	32.3	23.3	33.5	44.4	32.5	25.5	32.5											
85	17.3	10.1	7.48	9.84	19.8	11.0	8.28	11.4											
90	7.03	8.14	6.79	8.01	7.71	8.40	7.25	8.40											
95	7.53	8.32	7.62	8.17	7.11	8.59	9.05	8.66											
100	7.59	8.69	7.36	8.33	7.25	8.94	7.07	8.49											
105	7.77	8.38	7.48	8.24	7.78	8.67	7.71	8.35											
110	8.02	9.00	7.78	8.60	8.47	8.80	7.98	8.67											
115	8.30	9.12	8.06	8.86	7.98	9.09	8.36	8.85											
120	8.50	9.33	8.40	8.85	8.33	9.07	8.75	8.99											
125	9.21	9.55	8.71	9.07	8.58	9.37	9.01	8.90											
130	9.10	9.62	9.06	9.36	9.09	9.13	9.48	9.48											
135	9.41	9.90	9.26	9.53	9.40	9.62	9.63	9.19											
140	9.47	10.2	9.18	9.79	9.49	9.65	9.33	9.93											
145	9.67	9.72	9.36	9.95	10.2	9.97	10.2	9.70											
150	9.72	10.3	9.71	10.2	9.84	10.3	9.70	9.97											
155	10.0	10.7	10.1	10.3	10.5	10.2	10.3	10.1											
160	10.2	11.0	10.3	10.4	10.2	10.6	10.2	10.3											
165	10.5	10.5	10.6	10.6	10.5	10.4	10.4	10.2											
170	10.3	11.0	10.3	10.6	11.0	10.5	10.9	10.5											
175	10.2	11.0	10.9	10.7	11.1	10.7	11.0	10.6											
180	10.5	11.0	10.9	11.1	10.9	11.1	11.1	10.8											

C Range: 0 - 360DEG
 C Interval: 45.0DEG
 Test Speed: HIGH
 Temperature:25.3DEG
 Operators:DAMIN
 Test Date:2021-11-11

γ Range: 0 - 180DEG
 γ Interval: 1.0DEG
 Test System:EVERFINE GO-2000A_V1 SYSTEM V2.0.276
 Humidity:65.0%
 Test Distance:10.237m [K=1.0000]
 Remarks: