

Wall Mounted Touch Panel

Model No.: FLS-RC-W

4 Zone/1 4 color/Glass touch panel/Color wheel/Wireless remote 30m distance/AAA x 2 battery



FLS-RC-W
4 Zone RGB/RGBW

CE RoHS LVD RED

Features

- Touch panel 4 zone 1 4 color RF remote.
- Each zone can remote control multiple Skydance's 2.4G LED controllers.
- Ultra sensitive high strength glass touch panel with touch color wheel in the middle.
- Smooth and accurate color adjustment by touching the color slide.
- Touch keys with chord tones and LED indicator.
- Free installation, no wiring, removable.
- AAA x 2 battery powered.
- White & Black glass panel available.

Technical Parameters

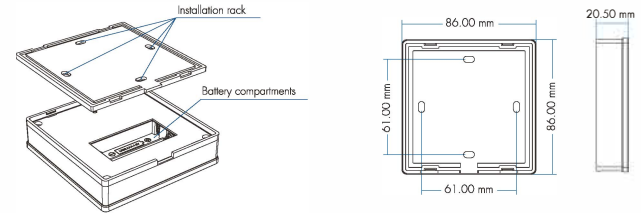
Input and Output	
Output signal	RF2.4GHz)
Working voltage	3VDC(AAA x 2)
Working current	< 5mA
Standby current	< 20µA
Standby time	1 year
Remote distance	30m

Warranty	
Warranty	5 years

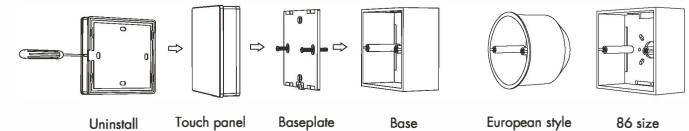
Safety and EMC	
EMC standard (EMC)	EN301 489,EN 62479
Safety standard(LVD)	EN60950
Radio Equipment(RED)	EN300 328
Certification	CE,EMC,LVD,RED

Environment	
Operation temperature	Ta: -30°C ~ +55°C
Case temperature (Max.)	Tc: +65°C
IP rating	IP20

Mechanical Structures and Installations



Installation diagram:



Typical base as below:

To fix the panel, two options are offered for selection:

- Option 1: fix it on the wall with two screws.
Option 2: adhere it to the wall with pasteur.

Match Remote Control (two match ways)

End user can choose the suitable match/delete ways. Two options are offered for selection:

Use the controller's Match key

Match:
Short press match key, immediately press zone key of the touch panel.

The LED indicator fast flash a few times means match is successful.

Delete:
Press and hold match key for 5s to delete all match. The LED indicator fast flash a few times means all matched remotes were deleted.

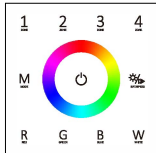
Use Power Restart

Match:
Switch off the power of the receiver, then switch on power again, immediately short press zone key 3 times on the touch panel. The light blinks 3 times means match is successful.

Delete:
Switch off the power of the receiver, then switch on power again, immediately short press zone key 5 times on the touch panel. The light blinks 5 times means all matched remotes were deleted.

Key function

FLS-RC-W RGBW panel



- ⏻ — Turn on/off all zone light.
- ⦿ — Color wheel.
- M — Short press play 10 built-in mode, long press 2s run mode-cycle.
- % — Adjust dynamic mode speed or static color brightness, 10 levels.
- R G B W — Short press get red, green, blue, white color, long press adjust each color brightness.
- 1 2 3 4 — Short press turn on zone light and select zone simultaneously, long press 2s turn off zone light. 4 zone control separately or synchronously, each zone could control multiple receivers.

Note: After touch power key to turn off light, long press power key for 5 seconds will turn on or turn off tone.

Safety information

1. Read all instructions carefully before you begin this installation.
2. When installing battery, pay attention to the battery positive and negative polarity.
 - A long time without the remote control, remove the battery.
 - When remote distance becomes smaller and insensitive, replace the battery.
3. If no response from the receiver, please re-match the remote.
4. Gently handle remote, beware of falling.
5. For indoor and dry location use only.