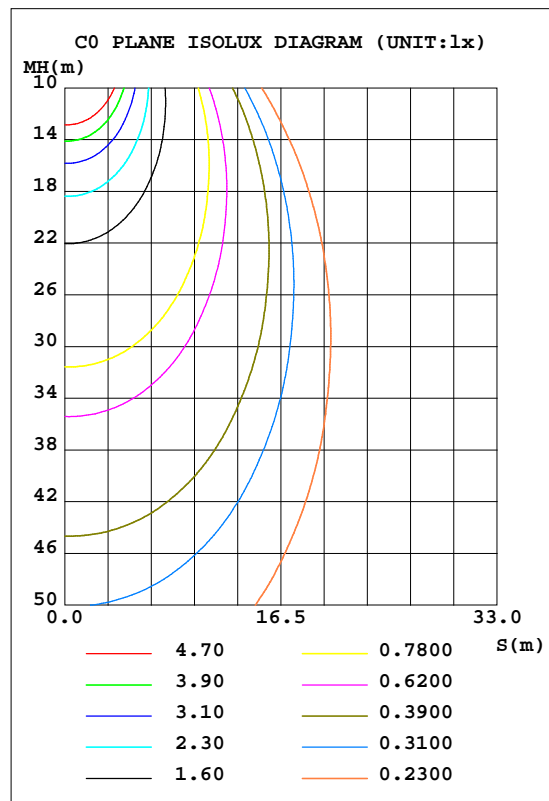
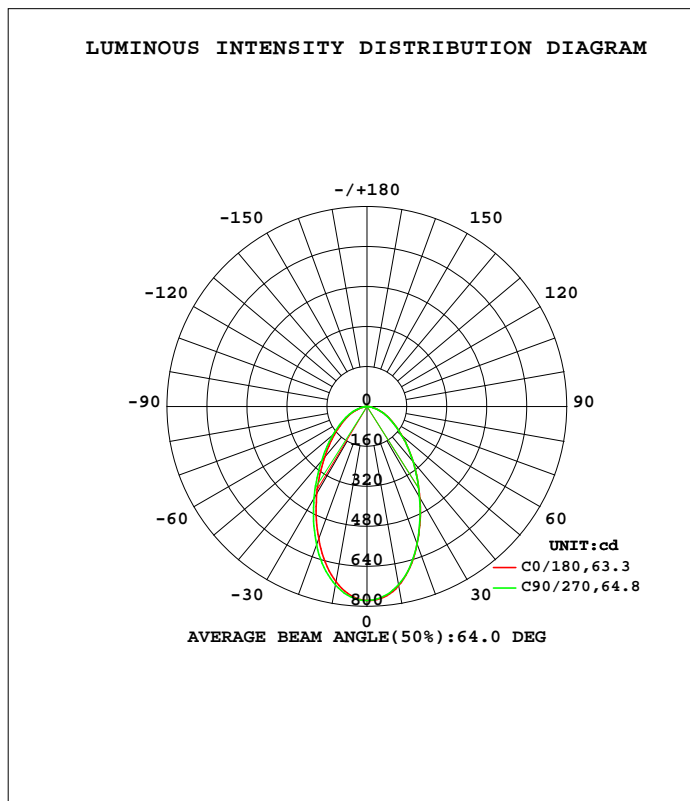


LUMINAIRE PHOTOMETRIC TEST REPORT

Test:U:230.84V I:0.0576A P:12.152W PF:0.9140 Freq:49.99Hz Lamp Flux:1129.48x1 lm		
NAME: 5RS049	TYPE:	WEIGHT:
SPEC.:	DIM.:	SERIAL No.:
MFR.:	SUR.:	Shielding Angle:

DATA OF LAMP		PHOTOMETRIC DATA				Eff: 92.94 lm/W
MODEL	6000K	I _{max} (cd)	776.6	S/MH(C0/180)	0.88	
NOMINAL POWER(W)	12	LOR(%)	100.0	S/MH(C90/270)	0.91	
RATED VOLTAGE(V)	230	TOTAL FLUX(lm)	1129.5	h UP, DN(C0-180)	0.1,50.2	
NOMINAL FLUX(lm)	1129.48	CIE CLASS	DIRECT	h UP, DN(C180-360)	0.1,49.5	
LAMPS INSIDE	1	h up(%)	0.2	CIBSE SHR NOM	1.00	
TEST VOLTAGE(V)	230.3	h down(%)	99.8	CIBSE SHR MAX	1.00	



C Range: 0 - 360DEG
 C Interval: 22.5DEG
 Test Speed: HIGH
 Temperature:25.3DEG
 Operators:
 Test Date:03 April 2020

Range: 0 - 180DEG
 Interval: 1.0DEG
 Test System:EVERFINE GO-2000A_V1 SYSTEM V2.00.416
 Humidity:65.0%
 Test Distance:8.989m [K=1.0000]
 Remarks:

ZONAL FLUX DIAGRAM

ZONAL FLUX DIAGRAM:

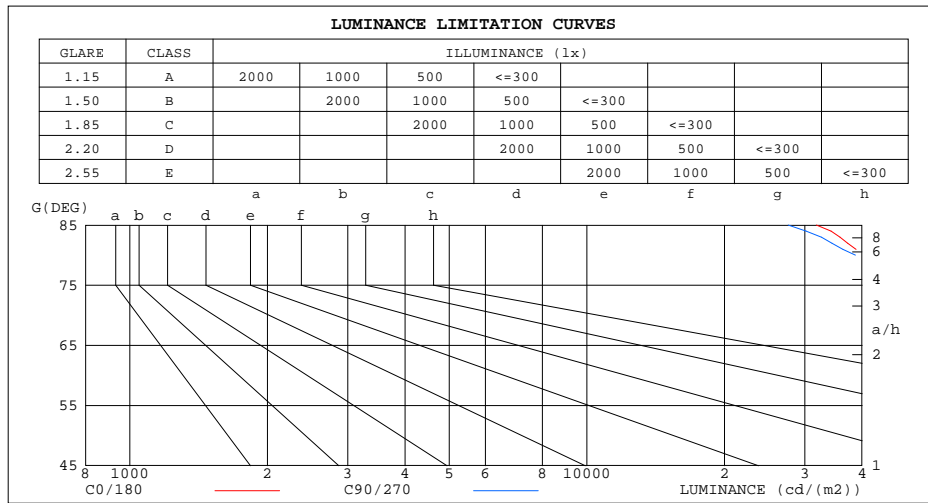
g	C0	C45	C90	C135	C180	C225	C270	C315	g	F zone	F total	%lum,lamp
10	728.7	728.3	724.3	713.2	713.2	717.2	725.7	731.2	0- 10	71.57	71.57	6.34,6.34
20	587.1	590.8	586.3	568.5	565.0	575.8	590.2	595.2	10- 20	184.1	255.7	22.6,22.6
30	423.2	428.9	422.3	406.4	402.6	412.5	425.0	430.6	20- 30	228.4	484.1	42.9,42.9
40	287.2	292.7	287.2	270.6	264.7	271.2	282.5	287.7	30- 40	215.7	699.8	62,62
50	184.5	187.9	182.0	169.4	166.2	171.0	178.8	183.9	40- 50	175.0	874.8	77.5,77.5
60	112.3	114.2	110.1	100.8	99.28	103.5	109.0	111.5	50- 60	125.6	1000	88.6,88.6
70	60.97	62.40	59.66	52.50	50.36	53.30	58.78	61.18	60- 70	80.79	1081	95.7,95.7
80	20.09	20.62	18.99	15.06	14.37	15.13	18.05	20.04	70- 80	38.05	1119	99.1,99.1
90	0.2094	0.1450	0.0579	0.0504	0.0564	0.0691	0.0566	0.0628	80- 90	7.444	1127	99.8,99.8
100	0.0752	0.0816	0.0817	0.0755	0.1129	0.1130	0.1007	0.0882	90-100	0.0793	1127	99.8,99.8
110	0.1254	0.1379	0.1568	0.1684	0.1881	0.2009	0.1823	0.1761	100-110	0.1304	1127	99.8,99.8
120	0.2695	0.2762	0.2765	0.2956	0.3262	0.3329	0.3143	0.2958	110-120	0.2258	1127	99.8,99.8
130	0.4386	0.4392	0.4776	0.4717	0.4955	0.5024	0.4903	0.4718	120-130	0.3389	1127	99.8,99.8
140	0.6645	0.6718	0.6850	0.6981	0.7151	0.7285	0.7167	0.6796	130-140	0.4457	1128	99.9,99.9
150	0.9403	0.9665	0.9678	0.9750	0.9909	0.9859	0.9806	0.9500	140-150	0.5171	1128	99.9,99.9
160	1.216	1.218	1.257	1.271	1.267	1.269	1.257	1.227	150-160	0.5097	1129	100,100
170	1.461	1.475	1.477	1.484	1.480	1.488	1.477	1.460	160-170	0.3836	1129	100,100
180	1.580	1.582	1.584	1.579	1.586	1.576	1.578	1.585	170-180	0.1454	1129	100,100
DEG	LUMINOUS INTENSITY:cd									UNIT:lm		

C Range: 0 - 360DEG
 C Interval: 22.5DEG
 Test Speed: HIGH
 Temperature:25.3DEG
 Operators:
 Test Date:03 April 2020

g Range: 0 - 180DEG
 Interval: 1.0DEG
 Test System:EVERFINE GO-2000A_V1 SYSTEM V2.00.416
 Humidity:65.0%
 Test Distance:8.989m [K=1.0000]
 Remarks:

LUMINANCE LIMITATION CURVES

Test:U:230.84V I:0.0576A P:12.152W PF:0.9140 Freq:49.99Hz Lamp Flux:1129.48x1 lm		
NAME: 5RS049	TYPE:	WEIGHT:
SPEC.:	DIM.:	SERIAL No.:
MFR.:	SUR.:	Shielding Angle:



LUMINANCE cd/(m2)		
G(DEG)	C0/180	C90/270
85	31810	27596
80	40996	38678
75	52797	50857
70	63180	61685
65	71302	70001
60	79583	77861
55	89394	87892
50	101717	100116
45	116206	115794

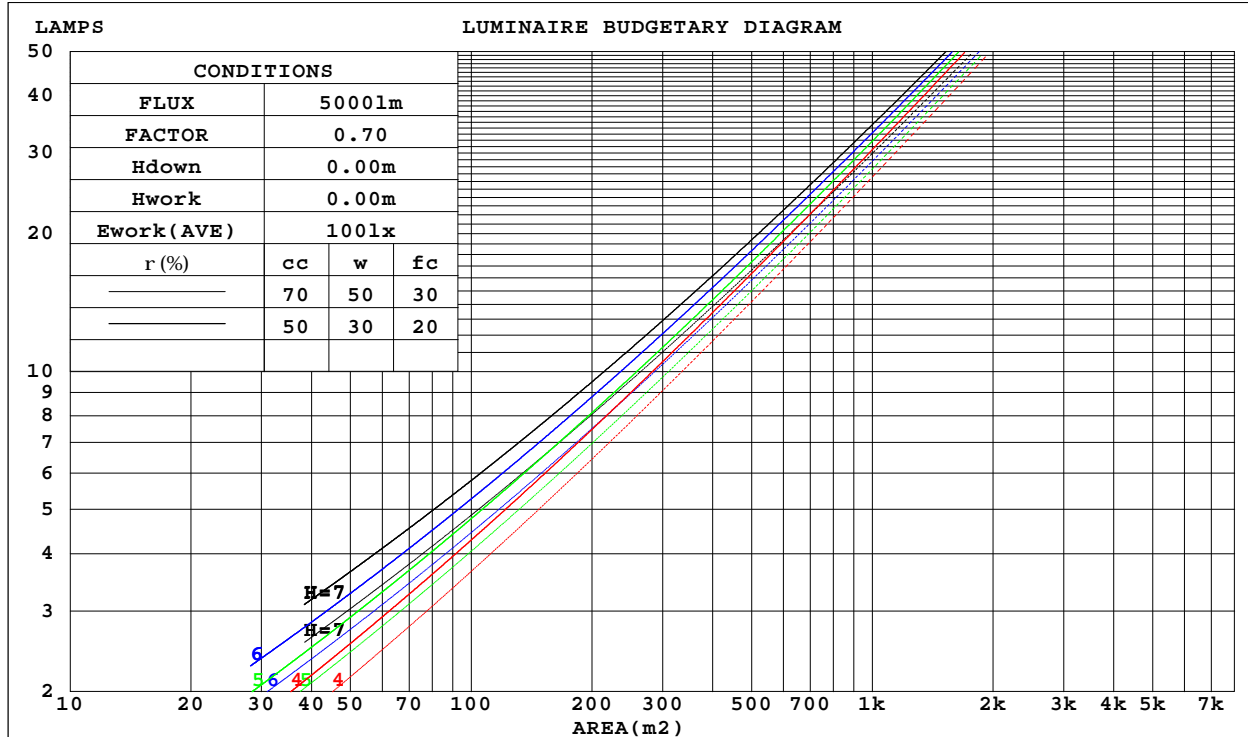
C Range: 0 - 360DEG
 C Interval: 22.5DEG
 Test Speed: HIGH
 Temperature:25.3DEG
 Operators:
 Test Date:03 April 2020

G Range: 0 - 180DEG
 G Interval: 1.0DEG
 Test System:EVERFINE GO-2000A_V1 SYSTEM V2.00.416
 Humidity:65.0%
 Test Distance:8.989m [K=1.0000]
 Remarks:

CU AND LUMINAIRE BUDGETARY ESTIMATE DIAGRAM

Test:U:230.84V I:0.0576A P:12.152W PF:0.9140 Freq:49.99Hz Lamp Flux:1129.48x1 lm		
NAME: 5RS049	TYPE:	WEIGHT:
SPEC.:	DIM.:	SERIAL No.:
MFR.:	SUR.:	Shielding Angle:

r _{cc}	80%			70%			50%			30%			10%			0
r _w	50%	30%	10%	50%	30%	10%	50%	30%	10%	50%	30%	10%	50%	30%	10%	0
r _{fc}	20%			20%			20%			20%			20%			0
RCR	RCR:Room Cavity Ratio						Coefficients of Utilization(CU)									
0.0	1.19	1.19	1.19	1.16	1.16	1.16	1.11	1.11	1.11	1.06	1.06	1.06	1.02	1.02	1.02	.00
1.0	1.07	1.03	1.00	1.05	1.02	.99	1.01	.98	.96	.97	.95	.93	.93	.91	.90	.88
2.0	.96	.90	.85	.94	.89	.84	.91	.86	.82	.87	.84	.81	.84	.81	.79	.77
3.0	.86	.79	.74	.85	.78	.73	.82	.76	.72	.79	.75	.71	.77	.73	.70	.68
4.0	.78	.71	.65	.77	.70	.65	.74	.68	.64	.72	.67	.63	.70	.66	.62	.60
5.0	.71	.63	.58	.70	.63	.57	.68	.62	.57	.66	.61	.56	.64	.60	.56	.54
6.0	.65	.57	.52	.64	.57	.52	.63	.56	.51	.61	.55	.51	.60	.54	.50	.49
7.0	.60	.52	.47	.59	.52	.47	.58	.51	.46	.56	.51	.46	.55	.50	.46	.44
8.0	.56	.48	.43	.55	.48	.43	.54	.47	.42	.52	.47	.42	.51	.46	.42	.40
9.0	.52	.44	.39	.51	.44	.39	.50	.44	.39	.49	.43	.39	.48	.43	.39	.37
10.0	.48	.41	.36	.48	.41	.36	.47	.40	.36	.46	.40	.36	.45	.40	.36	.34



C Range: 0 - 360DEG
 C Interval: 22.5DEG
 Test Speed: HIGH
 Temperature:25.3DEG
 Operators:
 Test Date:03 April 2020

g Range: 0 - 180DEG
 g Interval: 1.0DEG
 Test System:EVERFINE GO-2000A_V1 SYSTEM V2.00.416
 Humidity:65.0%
 Test Distance:8.989m [K=1.0000]
 Remarks:

WEC AND CCEC

Test:U:230.84V I:0.0576A P:12.152W PF:0.9140 Freq:49.99Hz Lamp Flux:1129.48x1 lm		
NAME: 5RS049	TYPE:	WEIGHT:
SPEC.:	DIM.:	SERIAL No.:
MFR.:	SUR.:	Shielding Angle:

rcc	80%			70%			50%			30%			10%			0
rw	50%	30%	10%	50%	30%	10%	50%	30%	10%	50%	30%	10%	50%	30%	10%	0
rfc	20%			20%			20%			20%			20%			0
RCR	RCR:Room Cavity Ratio						Wall Exitance Coefficients(WEC)									
0.0																
1.0	.250	.142	.045	.243	.138	.044	.230	.132	.042	.217	.125	.040	.206	.120	.039	
2.0	.239	.131	.040	.233	.129	.040	.222	.123	.038	.212	.119	.037	.202	.114	.036	
3.0	.225	.120	.036	.220	.118	.035	.210	.114	.035	.201	.110	.034	.192	.106	.033	
4.0	.211	.110	.032	.206	.108	.032	.198	.105	.031	.189	.102	.031	.182	.099	.030	
5.0	.197	.101	.029	.193	.099	.029	.186	.097	.028	.178	.094	.028	.172	.092	.028	
6.0	.185	.093	.027	.182	.092	.026	.175	.090	.026	.168	.087	.026	.162	.085	.025	
7.0	.174	.086	.024	.171	.085	.024	.165	.083	.024	.159	.082	.024	.154	.080	.023	
8.0	.164	.080	.023	.161	.079	.022	.156	.078	.022	.150	.076	.022	.146	.075	.022	
9.0	.155	.075	.021	.152	.074	.021	.147	.073	.021	.143	.072	.020	.138	.070	.020	
10.0	.147	.070	.020	.144	.070	.019	.140	.069	.019	.136	.067	.019	.132	.066	.019	

rcc	80%			70%			50%			30%			10%			0
rw	50%	30%	10%	50%	30%	10%	50%	30%	10%	50%	30%	10%	50%	30%	10%	0
rfc	20%			20%			20%			20%			20%			0
RCR	RCR:Room Cavity Ratio						Ceiling Cavity Exitance Coefficients(CCEC)									
0.0	.192	.192	.192	.164	.164	.164	.112	.112	.112	.064	.064	.064	.021	.021	.021	
1.0	.178	.159	.141	.152	.136	.121	.104	.094	.084	.060	.054	.049	.019	.017	.016	
2.0	.167	.134	.106	.143	.115	.092	.098	.080	.064	.057	.046	.038	.018	.015	.012	
3.0	.158	.116	.083	.135	.100	.072	.093	.069	.050	.054	.041	.030	.017	.013	.010	
4.0	.149	.102	.066	.128	.088	.057	.088	.061	.040	.051	.036	.024	.016	.012	.008	
5.0	.142	.091	.054	.122	.079	.047	.084	.055	.033	.049	.032	.020	.016	.011	.006	
6.0	.135	.083	.045	.116	.071	.039	.080	.050	.028	.046	.029	.017	.015	.010	.005	
7.0	.128	.075	.039	.110	.065	.034	.076	.046	.024	.044	.027	.014	.014	.009	.005	
8.0	.122	.069	.033	.105	.060	.029	.073	.042	.021	.042	.025	.012	.014	.008	.004	
9.0	.116	.064	.029	.100	.056	.026	.069	.039	.018	.040	.023	.011	.013	.008	.004	
10.0	.111	.060	.026	.096	.052	.023	.066	.037	.016	.039	.022	.010	.013	.007	.003	

C Range: 0 - 360DEG
 C Interval: 22.5DEG
 Test Speed: HIGH
 Temperature:25.3DEG
 Operators:
 Test Date:03 April 2020

g Range: 0 - 180DEG
 Interval: 1.0DEG
 Test System:EVERFINE GO-2000A_V1 SYSTEM V2.00.416
 Humidity:65.0%
 Test Distance:8.989m [K=1.0000]
 Remarks:

UGR(Unified Glare Rating) Table

Test:U:230.84V I:0.0576A P:12.152W PF:0.9140 Freq:49.99Hz Lamp Flux:1129.48x1 lm										
NAME: 5RS049					TYPE:			WEIGHT:		
SPEC.:					DIM.:			SERIAL No.:		
MFR.:					SUR.:			Shielding Angle:		
ceiling/cavity	0.7	0.7	0.5	0.5	0.3	0.7	0.7	0.5	0.5	0.3
walls	0.5	0.3	0.5	0.3	0.3	0.5	0.3	0.5	0.3	0.3
working plane	0.2	0.2	0.2	0.2	0.2	0.2	0.2	0.2	0.2	0.2
Room dimensions	Viewed crosswise					Viewed endwise				
x = 2H y = 2H	27.3	28.6	27.5	28.8	29.0	27.2	28.5	27.5	28.7	28.9
3H	28.2	29.4	28.5	29.7	29.9	28.2	29.4	28.5	29.6	29.8
4H	28.6	29.7	28.9	30.0	30.2	28.5	29.6	28.8	29.9	30.1
6H	28.8	29.8	29.1	30.1	30.4	28.7	29.7	29.0	30.0	30.3
8H	28.8	29.8	29.1	30.1	30.4	28.7	29.7	29.0	30.0	30.3
12H	28.8	29.8	29.1	30.1	30.4	28.7	29.7	29.1	30.0	30.3
4H 2H	27.7	28.8	28.0	29.1	29.3	27.7	28.8	28.0	29.0	29.3
3H	28.8	29.8	29.2	30.1	30.4	28.8	29.8	29.1	30.1	30.4
4H	29.3	30.2	29.6	30.5	30.8	29.2	30.1	29.6	30.4	30.8
6H	29.5	30.3	29.9	30.7	31.0	29.5	30.3	29.9	30.6	31.0
8H	29.6	30.3	30.0	30.7	31.1	29.5	30.3	30.0	30.6	31.0
12H	29.7	30.3	30.1	30.7	31.1	29.6	30.2	30.0	30.6	31.0
8H 4H	29.4	30.1	29.8	30.5	30.9	29.4	30.1	29.8	30.5	30.8
6H	29.8	30.4	30.2	30.8	31.2	29.7	30.3	30.2	30.7	31.2
8H	29.9	30.4	30.4	30.9	31.3	29.8	30.4	30.3	30.8	31.2
12H	30.0	30.4	30.5	30.9	31.4	29.9	30.3	30.4	30.8	31.3
12H 4H	29.4	30.1	29.8	30.4	30.9	29.4	30.0	29.8	30.4	30.8
6H	29.8	30.3	30.2	30.7	31.2	29.7	30.3	30.2	30.7	31.1
8H	29.9	30.4	30.4	30.8	31.3	29.9	30.3	30.3	30.8	31.2
Variations with the observer position at spacings:										
S = 1.0H	+ 0.4 / - 0.4					+ 0.4 / - 0.5				
1.5H	+ 0.1 / - 0.3					+ 0.1 / - 0.3				
2.0H	+ 0.6 / - 0.6					+ 0.6 / - 0.6				

CIE Pub.117, 1129 lm Total Lamp Luminous Flux Correct (8log(F/F0) = 0.4)
 Area: 0.002827 m2

C Range: 0 - 360DEG
 C Interval: 22.5DEG
 Test Speed: HIGH
 Temperature:25.3DEG
 Operators:
 Test Date:03 April 2020

g Range: 0 - 180DEG
 Interval: 1.0DEG
 Test System:EVERFINE GO-2000A_V1 SYSTEM V2.00.416
 Humidity:65.0%
 Test Distance:8.989m [K=1.0000]
 Remarks:

UTILIZATION FACTORS TABLE

Test:U:230.84V I:0.0576A P:12.152W PF:0.9140 Freq:49.99Hz Lamp Flux:1129.48x1 lm		
NAME: 5RS049	TYPE:	WEIGHT:
SPEC.:	DIM.:	SERIAL No.:
MFR.:	SUR.:	Shielding Angle:

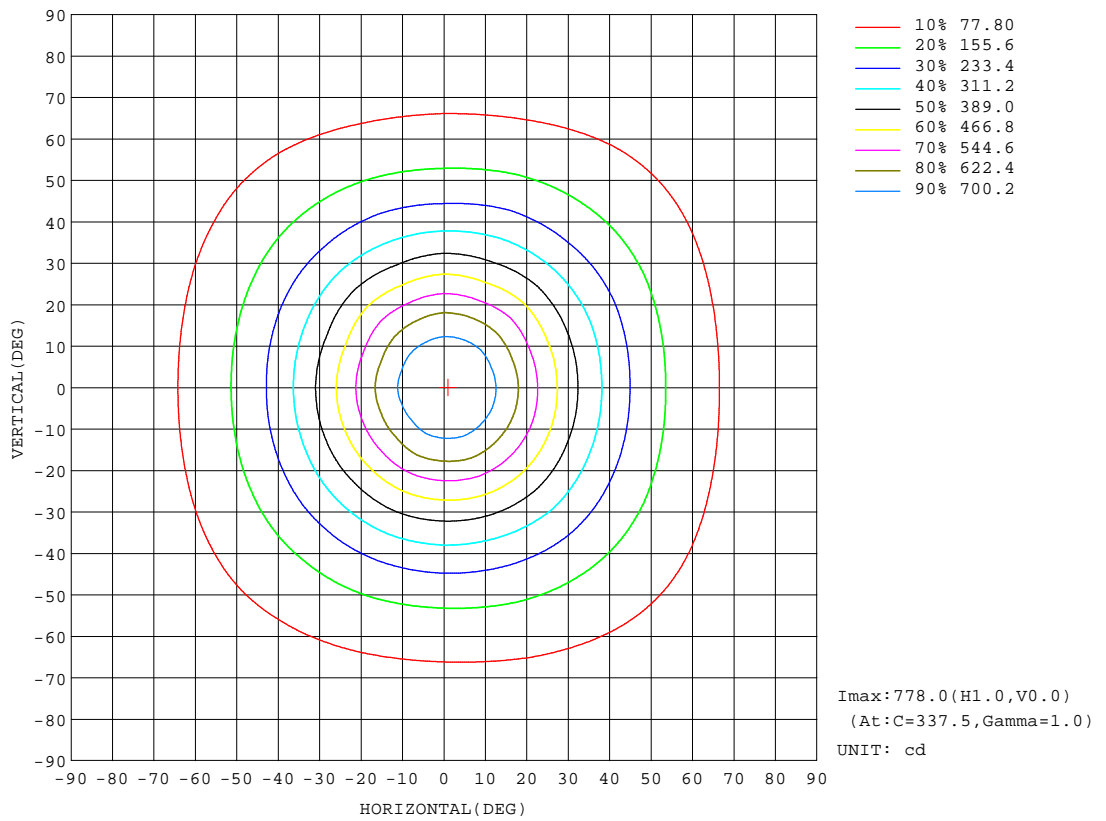
REFLECTANCE										
Ceiling	0.8	0.8	0.8	0.7	0.7	0.7	0.5	0.5	0.5	0
Walls	0.7	0.5	0.3	0.7	0.5	0.3	0.7	0.5	0.3	0
Working plane	0.2	0.2	0.2	0.2	0.2	0.2	0.2	0.2	0.2	0
ROOM INDEX	UTILIZATION FACTORS(PERCENT) $k(RI) \times RCR = 5$									
k = 0.60	68	58	52	67	58	52	66	57	52	46
0.80	77	68	62	76	67	62	75	67	61	55
1.00	85	76	70	84	75	69	82	76	69	63
1.25	91	82	77	90	82	76	87	80	76	69
1.50	95	87	82	94	86	81	91	85	80	74
2.00	100	94	89	99	93	88	96	90	86	80
2.50	103	97	93	102	96	92	98	93	90	82
3.00	106	101	96	104	99	95	100	96	93	85
4.00	109	105	101	107	103	100	103	100	97	89
5.00	111	107	104	109	106	103	105	102	100	91
ROOM INDEX	UF(total)									Direct
According to DIN EN 13032-2 2004			Suspended				SHRNOM = 1.25			

C Range: 0 - 360DEG
 C Interval: 22.5DEG
 Test Speed: HIGH
 Temperature:25.3DEG
 Operators:
 Test Date:03 April 2020

g Range: 0 - 180DEG
 Interval: 1.0DEG
 Test System:EVERFINE GO-2000A_V1 SYSTEM V2.00.416
 Humidity:65.0%
 Test Distance:8.989m [K=1.0000]
 Remarks:

ISOCANDELA DIAGRAM

Test:U:230.84V I:0.0576A P:12.152W PF:0.9140 Freq:49.99Hz Lamp Flux:1129.48x1 lm		
NAME: 5RS049	TYPE:	WEIGHT:
SPEC.:	DIM.:	SERIAL No.:
MFR.:	SUR.:	Shielding Angle:



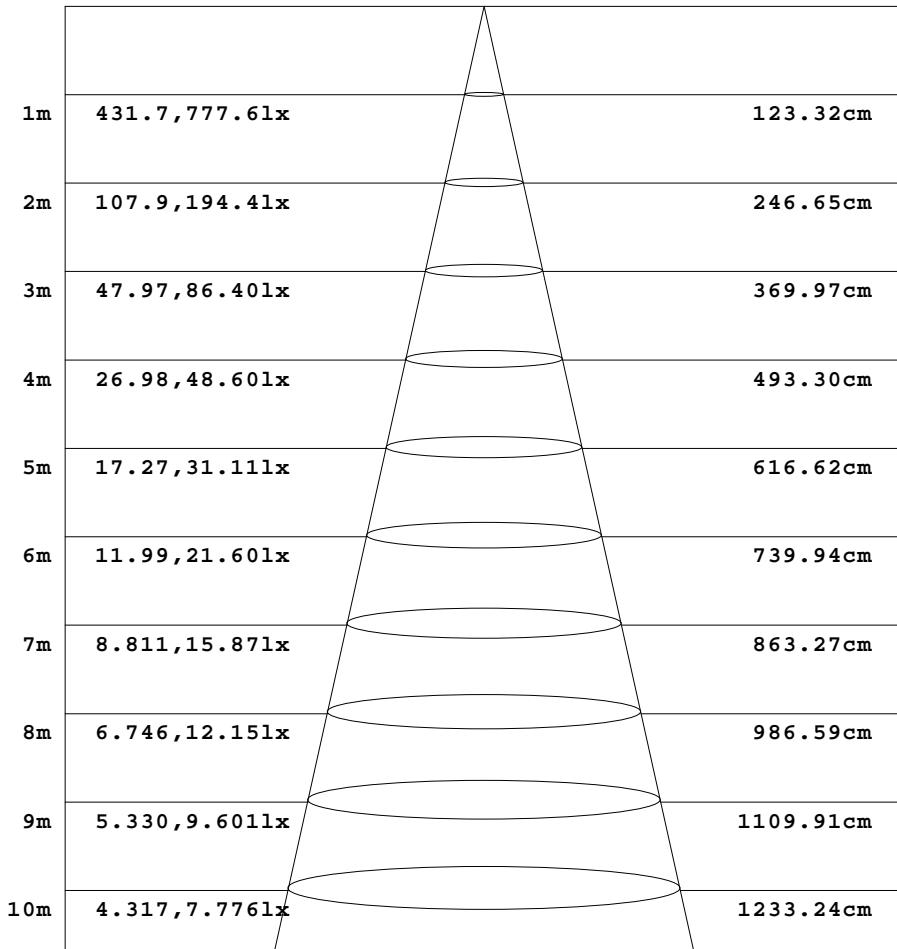
C Range: 0 - 360DEG
 C Interval: 22.5DEG
 Test Speed: HIGH
 Temperature: 25.3DEG
 Operators:
 Test Date: 03 April 2020

Range: 0 - 180DEG
 Interval: 1.0DEG
 Test System: EVERFINE GO-2000A_V1 SYSTEM V2.00.416
 Humidity: 65.0%
 Test Distance: 8.989m [K=1.0000]
 Remarks:

AAI Figure

Test:U:230.84V I:0.0576A P:12.152W PF:0.9140 Freq:49.99Hz Lamp Flux:1129.48x1 lm		
NAME: 5RS049	TYPE:	WEIGHT:
SPEC.:	DIM.:	SERIAL No.:
MFR.:	SUR.:	Shielding Angle:

Flux out:529.6 lm



Height Eavg, Emax Angle:63.32deg Diameter

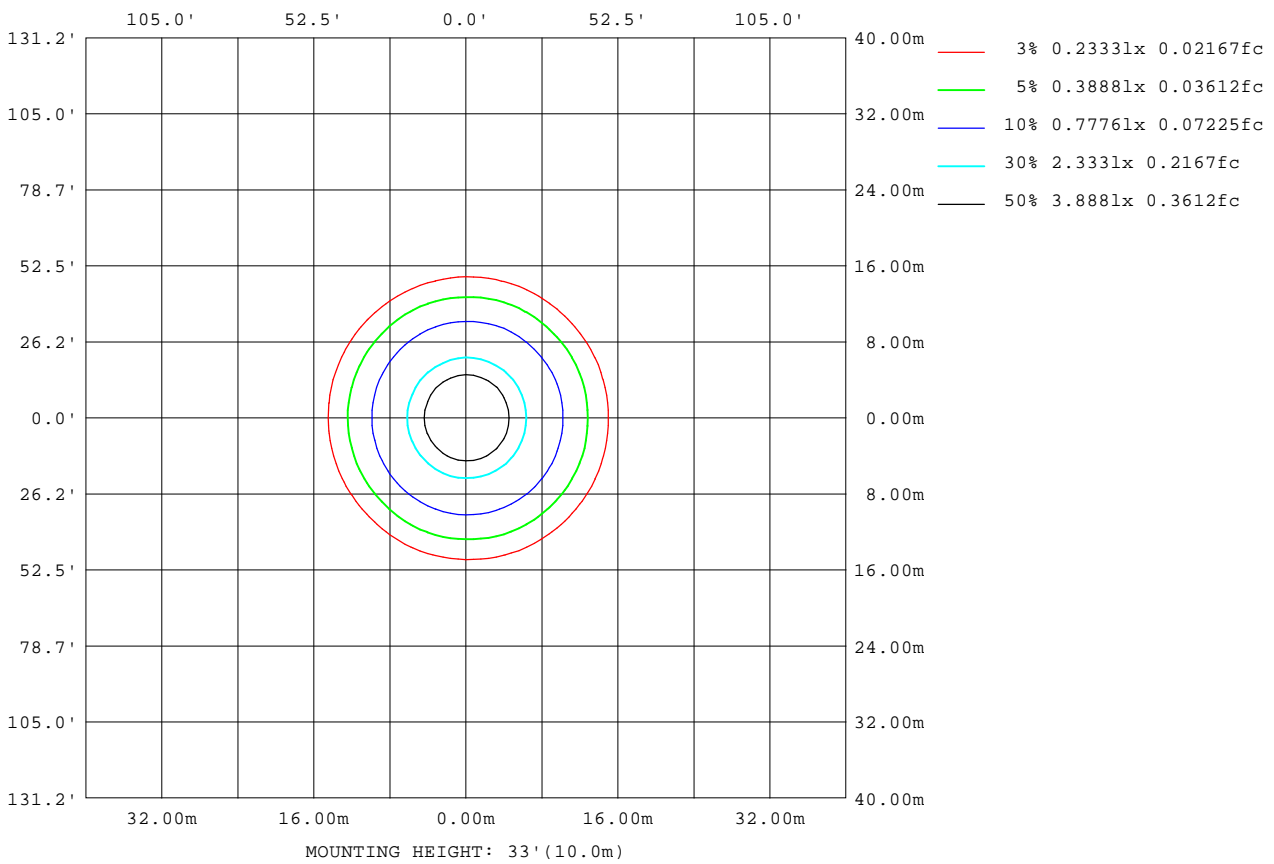
Note:The Curves indicate the illuminated area and the average illumination when the luminaire is at different distance.

C Range: 0 - 360DEG
 C Interval: 22.5DEG
 Test Speed: HIGH
 Temperature:25.3DEG
 Operators:
 Test Date:03 April 2020

g Range: 0 - 180DEG
 Interval: 1.0DEG
 Test System:EVERFINE GO-2000A_V1 SYSTEM V2.00.416
 Humidity:65.0%
 Test Distance:8.989m [K=1.0000]
 Remarks:

ISOLUX DIAGRAM

Test:U:230.84V I:0.0576A P:12.152W PF:0.9140 Freq:49.99Hz Lamp Flux:1129.48x1 lm		
NAME: 5RS049	TYPE:	WEIGHT:
SPEC.:	DIM.:	SERIAL No.:
MFR.:	SUR.:	Shielding Angle:



C Range: 0 - 360DEG
 C Interval: 22.5DEG
 Test Speed: HIGH
 Temperature: 25.3DEG
 Operators:
 Test Date: 03 April 2020

g Range: 0 - 180DEG
 Interval: 1.0DEG
 Test System: EVERFINE GO-2000A_V1 SYSTEM V2.00.416
 Humidity: 65.0%
 Test Distance: 8.989m [K=1.0000]
 Remarks:

LED Avg.L Report

Test:U:230.84V I:0.0576A P:12.152W PF:0.9140 Freq:49.99Hz Lamp Flux:1129.48x1 lm		
NAME: 5RS049	TYPE:	WEIGHT:
SPEC.:	DIM.:	SERIAL No.:
MFR.:	SUR.:	Shielding Angle:

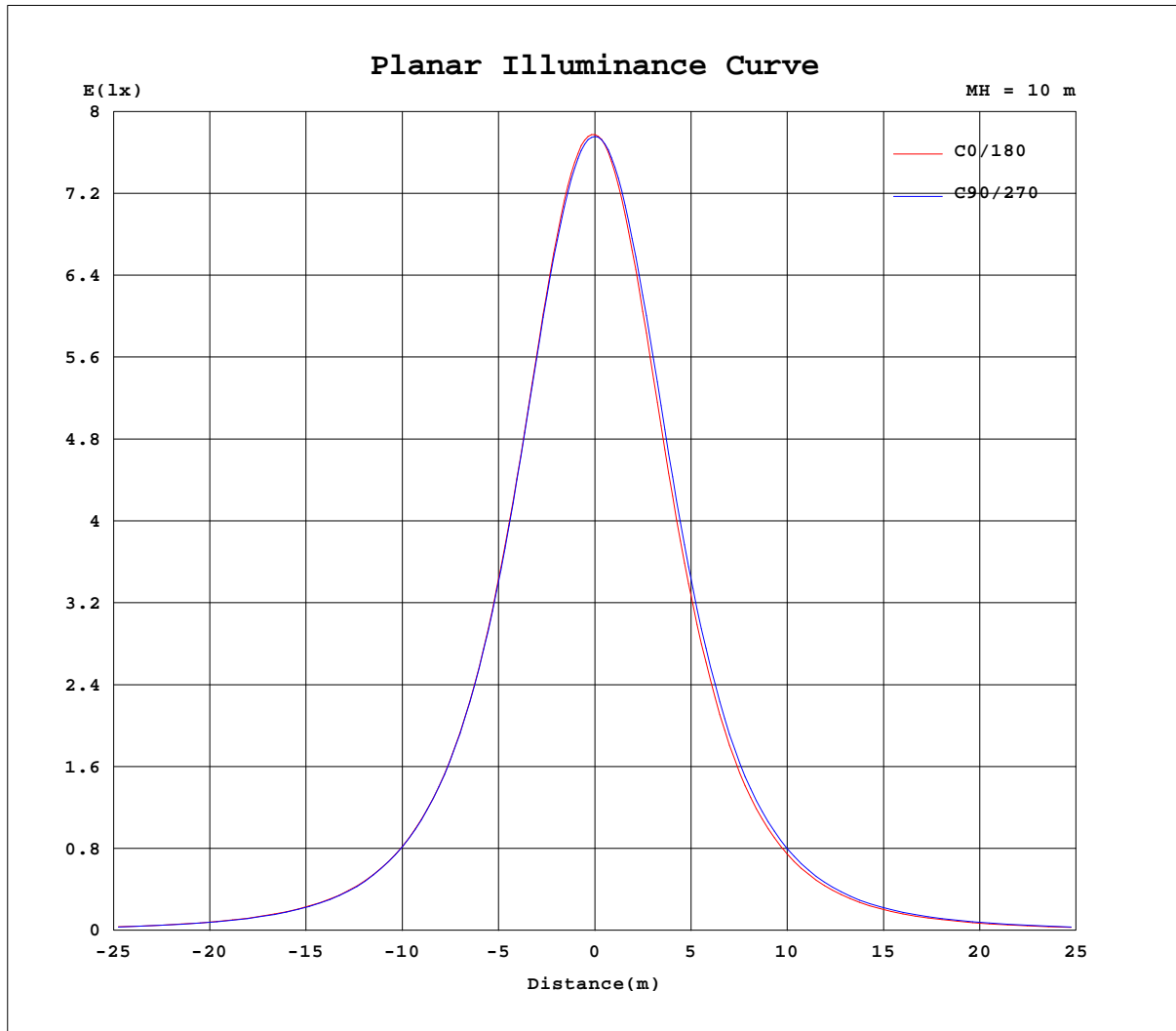
AvgL	cd/m2
L_0~180(65)av	66528
L_0~180(75)av	46568
L_0~180(85)av	23241
L_90~270(65)av	69821
L_90~270(75)av	50211
L_90~270(85)av	26067
L_45(65)av	68098
L_45(75)av	48333
L_45(85)av	22217

Standard: GB/T 29293-2012

C Range: 0 - 360DEG
 C Interval: 22.5DEG
 Test Speed: HIGH
 Temperature:25.3DEG
 Operators:
 Test Date:03 April 2020

g Range: 0 - 180DEG
 g Interval: 1.0DEG
 Test System:EVERFINE GO-2000A_V1 SYSTEM V2.00.416
 Humidity:65.0%
 Test Distance:8.989m [K=1.0000]
 Remarks:

Planar Illuminance Curve



C Range: 0 - 360DEG
 C Interval: 22.5DEG
 Test Speed: HIGH
 Temperature: 25.3DEG
 Operators:
 Test Date: 03 April 2020

Range: 0 - 180DEG
 Interval: 1.0DEG
 Test System: EVERFINE GO-2000A_V1 SYSTEM V2.00.416
 Humidity: 65.0%
 Test Distance: 8.989m [K=1.0000]
 Remarks:

LUMINOUS DISTRIBUTION INTENSITY DATA

Test:U:230.84V I:0.0576A P:12.152W PF:0.9140 Freq:49.99Hz Lamp Flux:1129.48x1 lm		
NAME: 5RS049	TYPE:	WEIGHT:
SPEC.:	DIM.:	SERIAL No.:
MFR.:	SUR.:	Shielding Angle:

Table--1

UNIT: cd

C(DEG) g (DEG)	0	22.5	45	67.5	90	112.5	135	157.5	180	202.5	225	247.5	270	292.5	315	337.5			
0	776	776	776	776	776	776	776	776	776	776	776	776	776	776	776	776			
5	766	768	767	766	763	762	760	758	759	758	761	762	764	765	767	767			
10	729	730	728	729	724	722	713	713	713	712	717	720	726	728	731	730			
15	667	667	667	670	665	661	647	644	647	643	652	659	667	668	670	665			
20	587	591	591	594	586	581	569	565	565	563	576	579	590	590	595	587			
25	504	508	509	510	502	496	485	482	482	479	494	494	506	502	513	504			
30	423	425	429	428	422	417	406	403	403	399	412	411	425	421	431	424			
35	351	351	357	352	351	344	335	329	329	329	337	340	349	352	354	354			
40	287	289	293	289	287	280	271	266	265	267	271	278	283	288	288	291			
45	232	234	236	235	232	225	217	213	211	214	217	226	227	234	231	236			
50	184	187	188	188	182	178	169	167	166	168	171	177	179	186	184	188			
55	145	147	147	147	143	139	131	129	129	131	134	137	140	144	144	146			
60	112	115	114	114	110	106	101	98.9	99.3	99.7	103	105	109	110	112	113			
65	85.0	86.7	86.7	86.8	83.7	80.5	76.0	74.2	73.9	74.1	77.6	79.5	83.2	83.5	85.2	85.2			
70	61.0	62.6	62.4	62.5	59.7	56.8	52.5	50.5	50.4	50.3	53.3	55.4	58.8	59.5	61.2	61.3			
75	38.6	39.8	39.6	39.6	37.2	35.0	31.5	29.7	29.6	29.3	31.6	33.4	36.3	37.1	38.7	38.8			
80	20.1	20.9	20.6	20.7	19.0	17.4	15.1	14.5	14.4	14.0	15.1	16.1	18.0	18.7	20.0	20.2			
85	7.82	8.37	8.03	7.93	6.80	4.95	3.25	3.23	3.63	3.35	4.22	4.72	6.04	5.73	6.39	7.58			
90	0.21	0.36	0.15	0.06	0.06	0.05	0.05	0.05	0.06	0.06	0.07	0.06	0.06	0.07	0.06	0.20			
95	0.06	0.06	0.06	0.06	0.08	0.08	0.08	0.08	0.08	0.06	0.08	0.08	0.08	0.06	0.06	0.06			
100	0.08	0.09	0.08	0.09	0.08	0.11	0.08	0.11	0.11	0.08	0.11	0.09	0.10	0.09	0.09	0.08			
105	0.08	0.13	0.08	0.14	0.11	0.14	0.10	0.15	0.15	0.11	0.15	0.11	0.15	0.09	0.14	0.09			
110	0.13	0.18	0.14	0.18	0.16	0.19	0.17	0.20	0.19	0.17	0.20	0.19	0.18	0.16	0.18	0.16			
115	0.19	0.23	0.19	0.24	0.20	0.25	0.21	0.25	0.25	0.22	0.26	0.21	0.25	0.20	0.23	0.18			
120	0.27	0.31	0.28	0.31	0.28	0.33	0.30	0.32	0.33	0.29	0.33	0.28	0.31	0.29	0.30	0.27			
125	0.36	0.38	0.36	0.39	0.38	0.41	0.38	0.42	0.40	0.37	0.41	0.37	0.40	0.38	0.38	0.31			
130	0.44	0.46	0.44	0.48	0.48	0.51	0.47	0.50	0.50	0.48	0.50	0.46	0.49	0.47	0.47	0.41			
135	0.55	0.57	0.57	0.59	0.57	0.61	0.58	0.61	0.60	0.57	0.61	0.57	0.60	0.57	0.57	0.52			
140	0.66	0.68	0.67	0.70	0.69	0.73	0.70	0.74	0.72	0.69	0.73	0.69	0.72	0.67	0.68	0.66			
145	0.80	0.82	0.78	0.84	0.83	0.86	0.84	0.87	0.85	0.83	0.85	0.82	0.84	0.79	0.81	0.79			
150	0.94	0.96	0.97	0.97	0.97	0.99	0.97	1.02	0.99	0.97	0.99	0.99	0.98	0.96	0.95	0.91			
155	1.08	1.10	1.07	1.12	1.11	1.14	1.11	1.15	1.14	1.10	1.13	1.11	1.12	1.08	1.09	1.07			
160	1.22	1.24	1.22	1.26	1.26	1.27	1.27	1.28	1.27	1.26	1.27	1.24	1.26	1.22	1.23	1.19			
165	1.35	1.37	1.36	1.38	1.36	1.39	1.38	1.40	1.39	1.37	1.38	1.36	1.37	1.35	1.35	1.32			
170	1.46	1.48	1.48	1.49	1.48	1.49	1.48	1.49	1.48	1.47	1.49	1.45	1.48	1.46	1.46	1.44			
175	1.55	1.56	1.54	1.56	1.56	1.56	1.55	1.57	1.56	1.56	1.56	1.53	1.54	1.54	1.55	1.53			
180	1.58	1.59	1.58	1.58	1.58	1.58	1.58	1.58	1.59	1.59	1.58	1.58	1.58	1.59	1.59	1.59			

C Range: 0 - 360DEG
 C Interval: 22.5DEG
 Test Speed: HIGH
 Temperature:25.3DEG
 Operators:
 Test Date:03 April 2020

g Range: 0 - 180DEG
 Interval: 1.0DEG
 Test System:EVERFINE GO-2000A_V1 SYSTEM V2.00.416
 Humidity:65.0%
 Test Distance:8.989m [K=1.0000]
 Remarks: