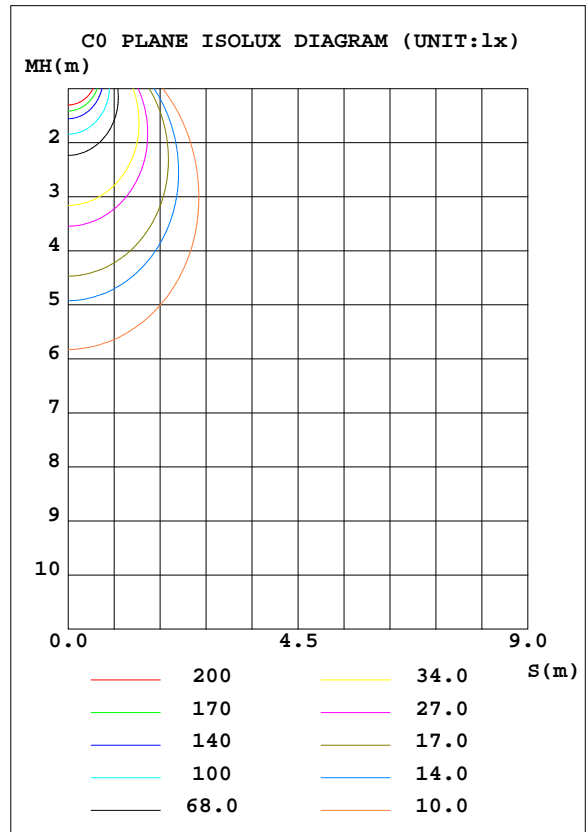
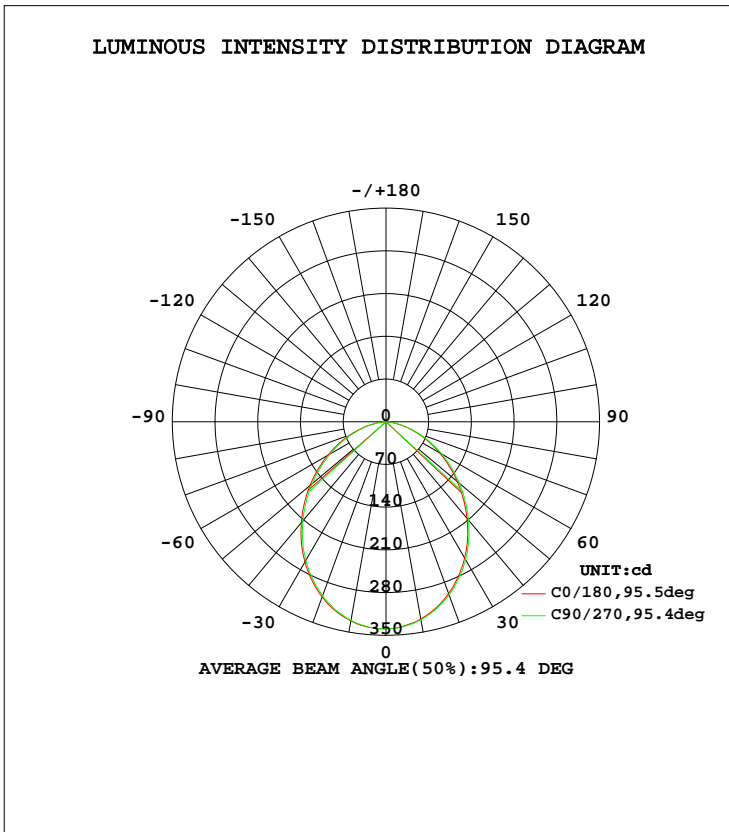


LUMINAIRE PHOTOMETRIC TEST REPORT

Test:U:240.7V I:0.0400A P:8.560W PF:0.8760 Lamp Flux:787.069x1 lm		
NAME: ID8W-WF	TYPE:8W	WEIGHT:
DIM.:	SPEC.:5700K	SERIAL No.:
MFR.: EVERFINE	SUR.:0.042	PROTECTION ANGLE:

DATA OF LAMP		PHOTOMETRIC DATA				Eff: 91.95 lm/W
MODEL	ID8W-WF	I _{max} (cd)	339.4	S/MH(C0/180)	1.15	
NOMINAL POWER(W)	9	LOR(%)	100.0	S/MH(C90/270)	1.15	
RATED VOLTAGE(V)	240	TOTAL FLUX(lm)	787.07	η UP, DN(C0-180)	0.0, 49.6	
NOMINAL FLUX(lm)	787.069	CIE CLASS	DIRECT	η UP, DN(C180-360)	0.0, 50.4	
LAMPS INSIDE	1	η up(%)	0.0	CIBSE SHR NOM	1.25	
TEST VOLTAGE(V)	240.7	η down(%)	100.0	CIBSE SHR MAX	1.30	



C Range: 0 - 360DEG
 C Interval: 45.0DEG
 Test Speed: HIGH
 Temperature:25.3DEG
 Operators:DAMIN
 Test Date:2020-07-20

γ Range: 0 - 90DEG
 γ Interval: 1.0DEG
 Test System:EVERFINE GO-2000A_V1 SYSTEM V2.0.276
 Humidity:65.0%
 Test Distance:10.237m [K=1.0000]
 Remarks:

ZONAL FLUX DIAGRAM

ZONAL FLUX DIAGRAM:

γ	C0	C45	C90	C135	C180	C225	C270	C315	γ	Φ zone	Φ total	Φlum, lamp
10	328.5	329.0	329.6	330.5	331.7	330.9	330.6	329.3	0- 10	31.94	31.94	4.06,4.06
20	299.5	301.6	302.1	303.7	305.7	304.5	303.7	301.7	10- 20	89.64	121.6	15.4,15.4
30	257.9	259.9	260.7	262.7	265.5	264.0	262.4	259.8	20- 30	130.5	252.1	32,32
40	206.5	209.4	210.4	212.7	216.1	213.7	211.8	208.5	30- 40	148.2	400.3	50.9,50.9
50	152.7	155.9	157.0	159.3	162.6	160.1	157.7	154.7	40- 50	142.1	542.4	68.9,68.9
60	101.2	104.1	105.3	107.6	110.4	108.1	105.8	103.0	50- 60	117.3	659.8	83.8,83.8
70	54.47	56.79	57.76	59.81	62.35	60.43	58.47	56.09	60- 70	80.60	740.4	94.1,94.1
80	16.50	17.09	17.46	18.35	21.28	20.33	19.09	17.03	70- 80	39.39	779.8	99.1,99.1
90	0.3091	0.2739	0.2463	0.2253	0.2572	0.3371	0.3659	0.2464	80- 90	7.317	787.1	100,100
100									90-100			
110									100-110			
120									110-120			
130									120-130			
140									130-140			
150									140-150			
160									150-160			
170									160-170			
180									170-180			
DEG	LUMINOUS INTENSITY:cd									UNIT:lm		

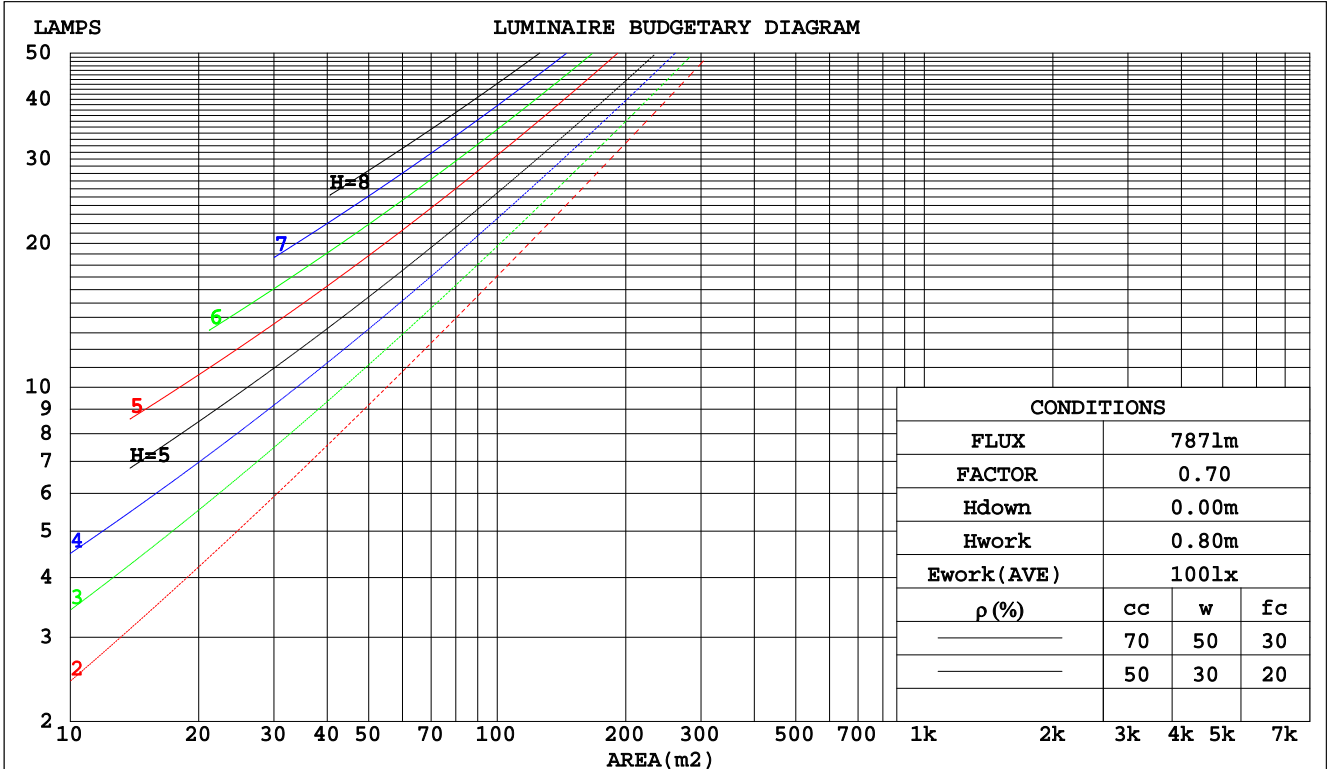
C Range: 0 - 360DEG
 C Interval: 45.0DEG
 Test Speed: HIGH
 Temperature:25.3DEG
 Operators:DAMIN
 Test Date:2020-07-20

γ Range: 0 - 90DEG
 γ Interval: 1.0DEG
 Test System:EVERFINE GO-2000A_V1 SYSTEM V2.0.276
 Humidity:65.0%
 Test Distance:10.237m [K=1.0000]
 Remarks:

CU AND LUMINAIRE BUDGETARY ESTIMATE DIAGRAM

Test:U:240.7V I:0.0400A P:8.560W PF:0.8760 Lamp Flux:787.069x1 lm		
NAME: ID8W-WF	TYPE:8W	WEIGHT:
DIM.:	SPEC.:5700K	SERIAL No.:
MFR.: EVERFINE	SUR.:0.042	PROTECTION ANGLE:

pcc	80%			70%			50%			30%			10%			0
	50%	30%	10%	50%	30%	10%	50%	30%	10%	50%	30%	10%	50%	30%	10%	0
pw																0
pfc	20%			20%			20%			20%			20%			0
RCR	RCR:Room Cavity Ratio						Coefficients of Utilization(CU)									
0.0	1.19	1.19	1.19	1.16	1.16	1.16	1.11	1.11	1.11	1.06	1.06	1.06	1.02	1.02	1.02	.00
1.0	1.05	1.01	.98	1.03	.00	.96	.99	.96	.93	.95	.93	.91	.91	.90	.88	.86
2.0	.93	.87	.81	.91	.85	.80	.87	.83	.78	.84	.80	.77	.81	.78	.75	.73
3.0	.82	.75	.68	.81	.74	.68	.78	.72	.67	.75	.70	.66	.73	.68	.64	.62
4.0	.73	.65	.59	.72	.64	.58	.70	.63	.57	.67	.61	.57	.65	.60	.56	.54
5.0	.66	.57	.51	.65	.57	.51	.63	.56	.50	.61	.55	.50	.59	.54	.49	.47
6.0	.60	.51	.45	.59	.51	.45	.57	.50	.44	.55	.49	.44	.54	.48	.44	.42
7.0	.54	.46	.40	.54	.46	.40	.52	.45	.40	.51	.44	.39	.49	.43	.39	.37
8.0	.50	.42	.36	.49	.41	.36	.48	.41	.36	.47	.40	.35	.45	.40	.35	.33
9.0	.46	.38	.32	.45	.38	.32	.44	.37	.32	.43	.37	.32	.42	.36	.32	.30
10.0	.42	.35	.30	.42	.34	.30	.41	.34	.29	.40	.34	.29	.39	.33	.29	.27



C Range: 0 - 360DEG
 C Interval: 45.0DEG
 Test Speed: HIGH
 Temperature: 25.3DEG
 Operators: DAMIN
 Test Date: 2020-07-20

γ Range: 0 - 90DEG
 γ Interval: 1.0DEG
 Test System: EVERFINE GO-2000A_V1 SYSTEM V2.0.276
 Humidity: 65.0%
 Test Distance: 10.237m [K=1.0000]
 Remarks:

WEC AND CCEC

Test:U:240.7V I:0.0400A P:8.560W PF:0.8760 Lamp Flux:787.069x1 lm		
NAME: ID8W-WF	TYPE:8W	WEIGHT:
DIM.:	SPEC.:5700K	SERIAL No.:
MFR.: EVERFINE	SUR.:0.042	PROTECTION ANGLE:

ρcc	80%			70%			50%			30%			10%			0
ρw	50%	30%	10%	50%	30%	10%	50%	30%	10%	50%	30%	10%	50%	30%	10%	0
ρfc	20%			20%			20%			20%			20%			0
RCR	RCR:Room Cavity Ratio						Wall Exitance Coefficients(WEC)									
0.0																
1.0	.281	.160	.051	.274	.156	.050	.260	.149	.048	.248	.143	.046	.237	.138	.044	
2.0	.269	.147	.045	.263	.145	.045	.251	.140	.043	.241	.135	.042	.231	.131	.041	
3.0	.252	.134	.040	.246	.132	.040	.236	.128	.039	.227	.124	.038	.218	.121	.037	
4.0	.234	.122	.036	.230	.120	.036	.221	.117	.035	.212	.114	.034	.204	.111	.034	
5.0	.218	.111	.032	.214	.110	.032	.206	.107	.032	.199	.105	.031	.192	.102	.031	
6.0	.203	.102	.029	.200	.101	.029	.193	.099	.029	.186	.097	.028	.180	.095	.028	
7.0	.190	.094	.027	.187	.093	.027	.181	.091	.026	.175	.090	.026	.169	.088	.026	
8.0	.178	.087	.024	.175	.086	.024	.170	.085	.024	.164	.083	.024	.159	.082	.024	
9.0	.168	.081	.023	.165	.080	.023	.160	.079	.022	.155	.078	.022	.151	.077	.022	
10.0	.158	.076	.021	.156	.075	.021	.151	.074	.021	.147	.073	.021	.143	.072	.021	

ρcc	80%			70%			50%			30%			10%			0
ρw	50%	30%	10%	50%	30%	10%	50%	30%	10%	50%	30%	10%	50%	30%	10%	0
ρfc	20%			20%			20%			20%			20%			0
RCR	RCR:Room Cavity Ratio						Ceiling Cavity Exitance Coefficients(CCEC)									
0.0	.190	.190	.190	.163	.163	.163	.111	.111	.111	.064	.064	.064	.020	.020	.020	
1.0	.178	.156	.137	.153	.134	.118	.104	.092	.081	.060	.053	.047	.019	.017	.015	
2.0	.169	.132	.101	.145	.114	.087	.099	.079	.061	.057	.046	.036	.018	.015	.012	
3.0	.161	.114	.077	.138	.098	.067	.095	.068	.047	.055	.040	.028	.018	.013	.009	
4.0	.153	.101	.061	.131	.087	.053	.090	.061	.037	.052	.036	.022	.017	.012	.007	
5.0	.146	.090	.049	.125	.078	.043	.086	.054	.030	.050	.032	.018	.016	.010	.006	
6.0	.139	.082	.041	.119	.071	.035	.082	.049	.025	.048	.029	.015	.015	.010	.005	
7.0	.132	.075	.034	.114	.065	.030	.079	.045	.021	.046	.027	.013	.015	.009	.004	
8.0	.126	.069	.030	.108	.060	.026	.075	.042	.018	.044	.025	.011	.014	.008	.004	
9.0	.120	.064	.026	.103	.055	.023	.072	.039	.016	.042	.023	.010	.014	.008	.003	
10.0	.115	.060	.023	.099	.052	.020	.069	.036	.014	.040	.022	.009	.013	.007	.003	

C Range: 0 - 360DEG
 C Interval: 45.0DEG
 Test Speed: HIGH
 Temperature:25.3DEG
 Operators:DAMIN
 Test Date:2020-07-20

γ Range: 0 - 90DEG
 γ Interval: 1.0DEG
 Test System:EVERFINE GO-2000A_V1 SYSTEM V2.0.276
 Humidity:65.0%
 Test Distance:10.237m [K=1.0000]
 Remarks:

Uncorrected UGR Table

Test:U:240.7V I:0.0400A P:8.560W PF:0.8760 Lamp Flux:787.069x1 lm										
NAME: ID8W-WF					TYPE:8W			WEIGHT:		
DIM.:					SPEC.:5700K			SERIAL No.:		
MFR.: EVERFINE					SUR.:0.042			PROTECTION ANGLE:		
ceiling/cavity	0.7	0.7	0.5	0.5	0.3	0.7	0.7	0.5	0.5	0.3
walls	0.5	0.3	0.5	0.3	0.3	0.5	0.3	0.5	0.3	0.3
working plane	0.2	0.2	0.2	0.2	0.2	0.2	0.2	0.2	0.2	0.2
Room dimensions	Viewed crosswise					Viewed endwise				
x = 2H y = 2H	25.4	26.8	25.6	27.0	27.2	25.5	26.9	25.8	27.1	27.3
3H	26.5	27.8	26.8	28.0	28.2	26.6	28.0	26.9	28.2	28.4
4H	26.8	28.1	27.1	28.3	28.6	27.0	28.3	27.3	28.5	28.8
6H	27.0	28.2	27.3	28.4	28.7	27.2	28.4	27.5	28.6	28.9
8H	27.0	28.1	27.3	28.4	28.7	27.2	28.4	27.5	28.6	28.9
12H	27.0	28.1	27.3	28.4	28.7	27.2	28.3	27.5	28.6	28.9
4H 2H	25.9	27.1	26.2	27.4	27.6	26.0	27.2	26.3	27.5	27.7
3H	27.1	28.2	27.5	28.5	28.8	27.3	28.4	27.6	28.7	29.0
4H	27.6	28.6	28.0	28.9	29.2	27.8	28.8	28.1	29.1	29.4
6H	27.8	28.7	28.2	29.1	29.4	28.0	28.9	28.4	29.3	29.6
8H	27.9	28.7	28.3	29.1	29.4	28.1	28.9	28.5	29.2	29.6
12H	27.9	28.6	28.3	29.0	29.4	28.1	28.8	28.5	29.2	29.6
8H 4H	27.7	28.6	28.1	28.9	29.3	27.9	28.7	28.3	29.1	29.5
6H	28.1	28.8	28.5	29.2	29.6	28.2	28.9	28.7	29.3	29.7
8H	28.1	28.7	28.6	29.2	29.6	28.3	28.9	28.8	29.3	29.8
12H	28.2	28.7	28.6	29.1	29.6	28.3	28.9	28.8	29.3	29.8
12H 4H	27.7	28.5	28.1	28.9	29.3	27.9	28.6	28.3	29.0	29.4
6H	28.1	28.7	28.5	29.1	29.5	28.2	28.8	28.7	29.3	29.7
8H	28.2	28.7	28.6	29.1	29.6	28.3	28.8	28.8	29.3	29.8
Variations with the observer position at spacings:										
S = 1.0H	+ 0.3 / - 0.3					+ 0.3 / - 0.3				
1.5H	+ 0.2 / - 0.3					+ 0.1 / - 0.3				
2.0H	+ 0.4 / - 0.4					+ 0.4 / - 0.4				

CIE Pub.117 Corrected 787.1 lm Total Lamp Luminous Flux.(8log(F/F0) = -0.8)

C Range: 0 - 360DEG
 C Interval: 45.0DEG
 Test Speed: HIGH
 Temperature:25.3DEG
 Operators:DAMIN
 Test Date:2020-07-20

γ Range: 0 - 90DEG
 γ Interval: 1.0DEG
 Test System:EVERFINE GO-2000A_V1 SYSTEM V2.0.276
 Humidity:65.0%
 Test Distance:10.237m [K=1.0000]
 Remarks:

UTILIZATION FACTORS TABLE

Test:U:240.7V I:0.0400A P:8.560W PF:0.8760 Lamp Flux:787.069x1 lm		
NAME: ID8W-WF	TYPE:8W	WEIGHT:
DIM.:	SPEC.:5700K	SERIAL No.:
MFR.: EVERFINE	SUR.:0.042	PROTECTION ANGLE:

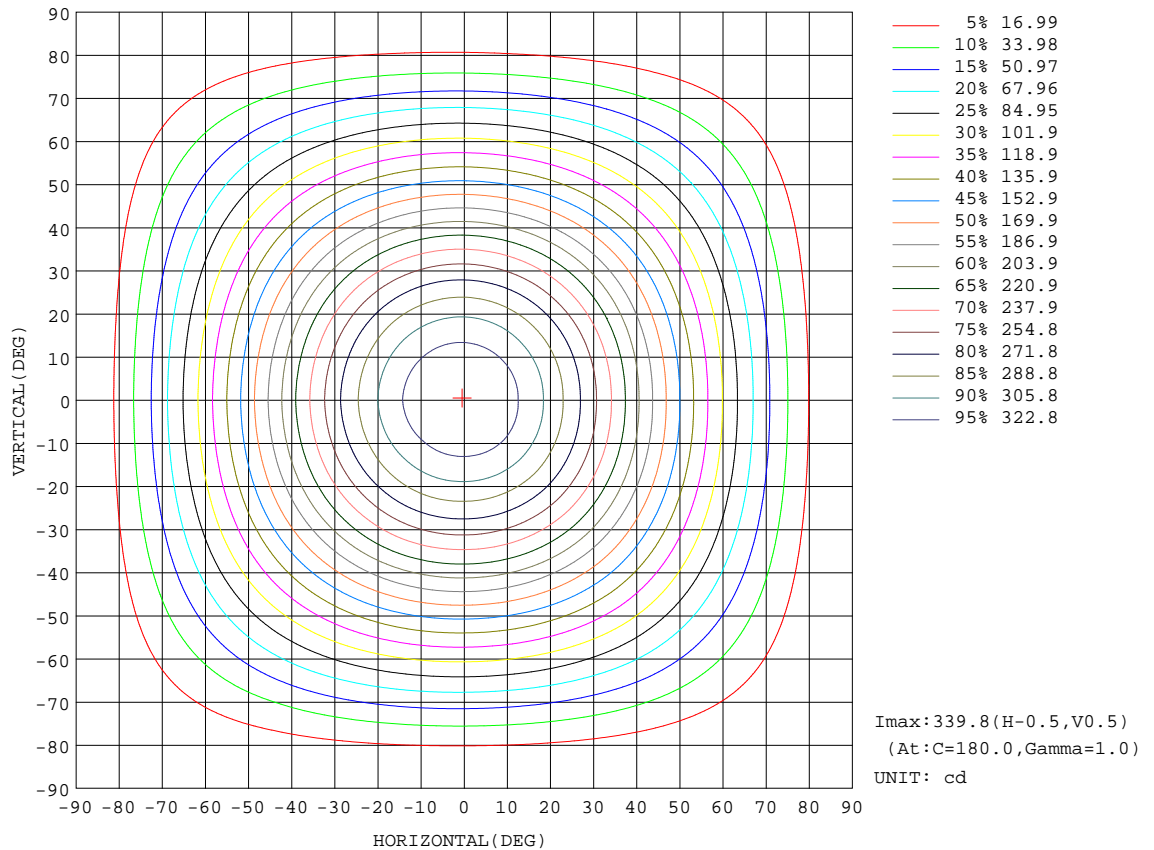
REFLECTANCE										
Ceiling	0.8	0.8	0.8	0.7	0.7	0.7	0.5	0.5	0.5	0
Walls	0.7	0.5	0.3	0.7	0.5	0.3	0.7	0.5	0.3	0
Working plane	0.2	0.2	0.2	0.2	0.2	0.2	0.2	0.2	0.2	0
ROOM INDEX	UTILIZATION FACTORS(PERCENT) $k(RI) \times RCR = 5$									
k = 0.60	61	50	43	60	50	43	59	49	43	37
0.80	71	60	53	70	60	53	68	59	53	46
1.00	79	69	62	78	68	62	76	70	61	55
1.25	86	77	70	85	76	70	82	74	69	62
1.50	91	82	76	89	81	75	87	79	74	67
2.00	97	90	84	96	88	83	92	86	81	74
2.50	101	94	88	99	93	87	95	90	86	78
3.00	104	98	93	102	96	92	98	93	90	81
4.00	108	103	98	105	101	97	101	97	94	86
5.00	110	106	102	107	104	100	103	100	97	88
ROOM INDEX	UF(total)									Direct
According to DIN EN 13032-2 2004			Suspended				SHRNOM = 1.25			

C Range: 0 - 360DEG
 C Interval: 45.0DEG
 Test Speed: HIGH
 Temperature:25.3DEG
 Operators:DAMIN
 Test Date:2020-07-20

γ Range: 0 - 90DEG
 γ Interval: 1.0DEG
 Test System:EVERFINE GO-2000A_V1 SYSTEM V2.0.276
 Humidity:65.0%
 Test Distance:10.237m [K=1.0000]
 Remarks:

ISOCANDELA DIAGRAM

Test:U:240.7V I:0.0400A P:8.560W PF:0.8760 Lamp Flux:787.069x1 lm		
NAME: ID8W-WF	TYPE:8W	WEIGHT:
DIM.:	SPEC.:5700K	SERIAL No.:
MFR.: EVERFINE	SUR.:0.042	PROTECTION ANGLE:

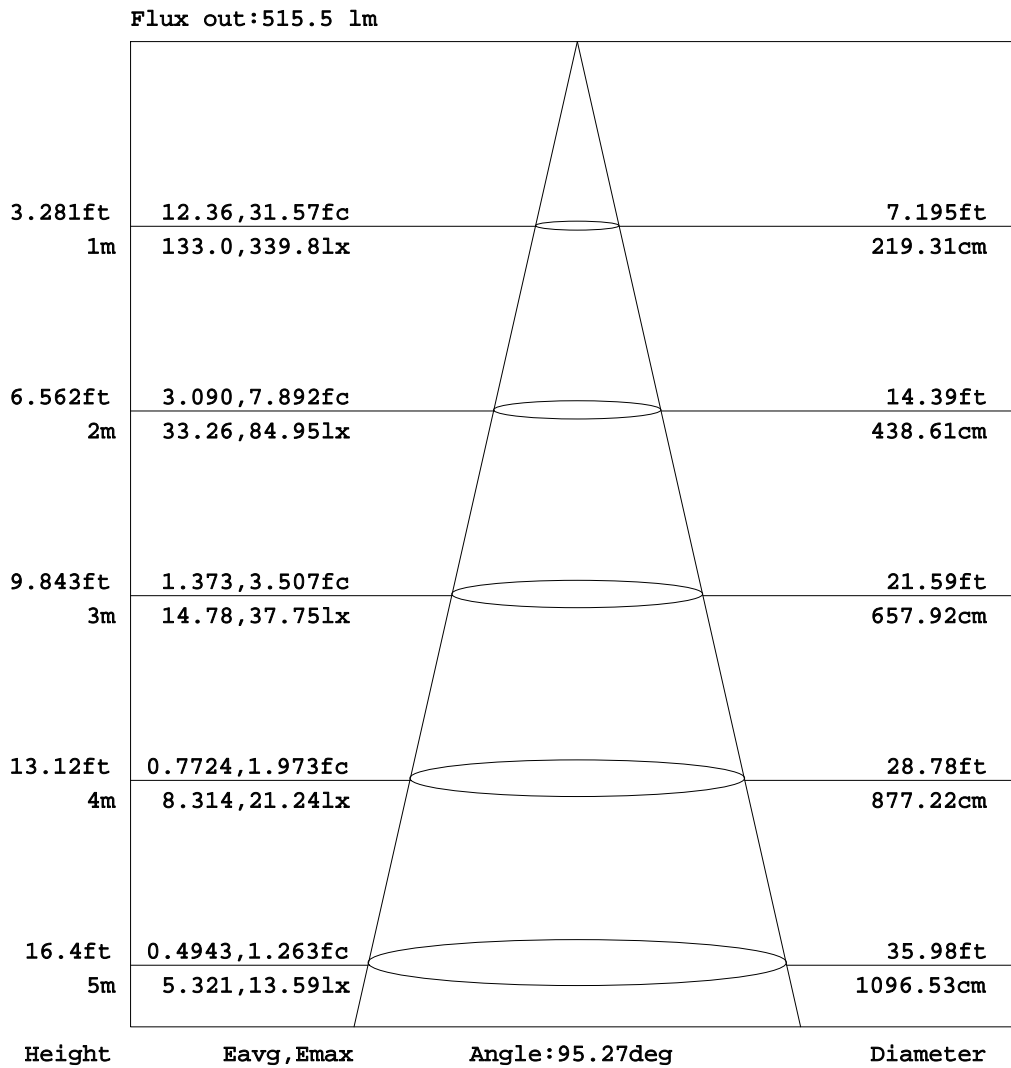


C Range: 0 - 360DEG
 C Interval: 45.0DEG
 Test Speed: HIGH
 Temperature: 25.3DEG
 Operators: DAMIN
 Test Date: 2020-07-20

γ Range: 0 - 90DEG
 γ Interval: 1.0DEG
 Test System: EVERFINE GO-2000A_V1 SYSTEM V2.0.276
 Humidity: 65.0%
 Test Distance: 10.237m [K=1.0000]
 Remarks:

AAI Figure

Test:U:240.7V I:0.0400A P:8.560W PF:0.8760 Lamp Flux:787.069x1 lm		
NAME: ID8W-WF	TYPE:8W	WEIGHT:
DIM.:	SPEC.:5700K	SERIAL No.:
MFR.: EVERFINE	SUR.:0.042	PROTECTION ANGLE:



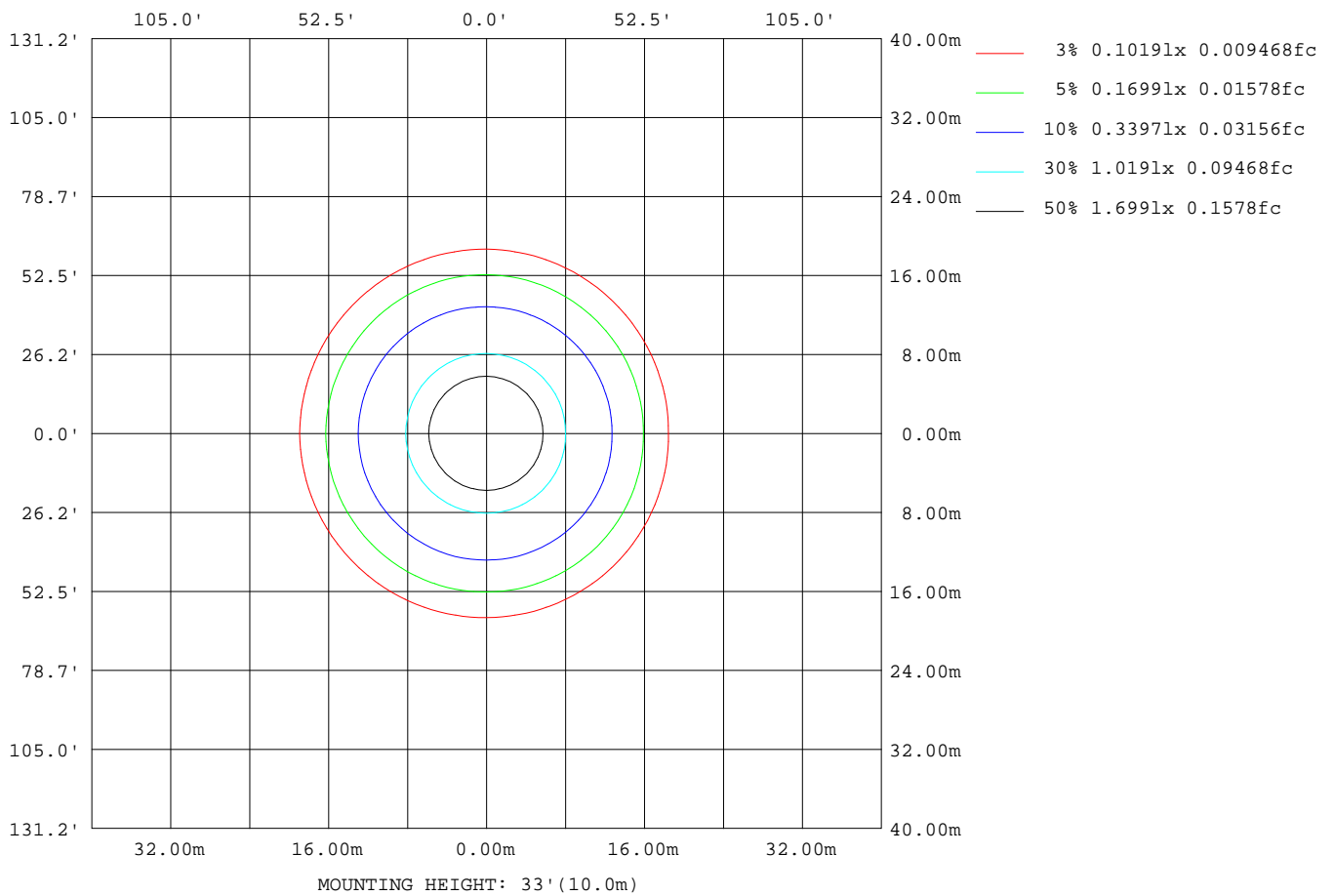
Note:The Curves indicate the illuminated area and the average illumination when the luminaire is at different distance.

C Range: 0 - 360DEG
 C Interval: 45.0DEG
 Test Speed: HIGH
 Temperature:25.3DEG
 Operators:DAMIN
 Test Date:2020-07-20

γ Range: 0 - 90DEG
 γ Interval: 1.0DEG
 Test System:EVERFINE GO-2000A_V1 SYSTEM V2.0.276
 Humidity:65.0%
 Test Distance:10.237m [K=1.0000]
 Remarks:

ISOLUX DIAGRAM

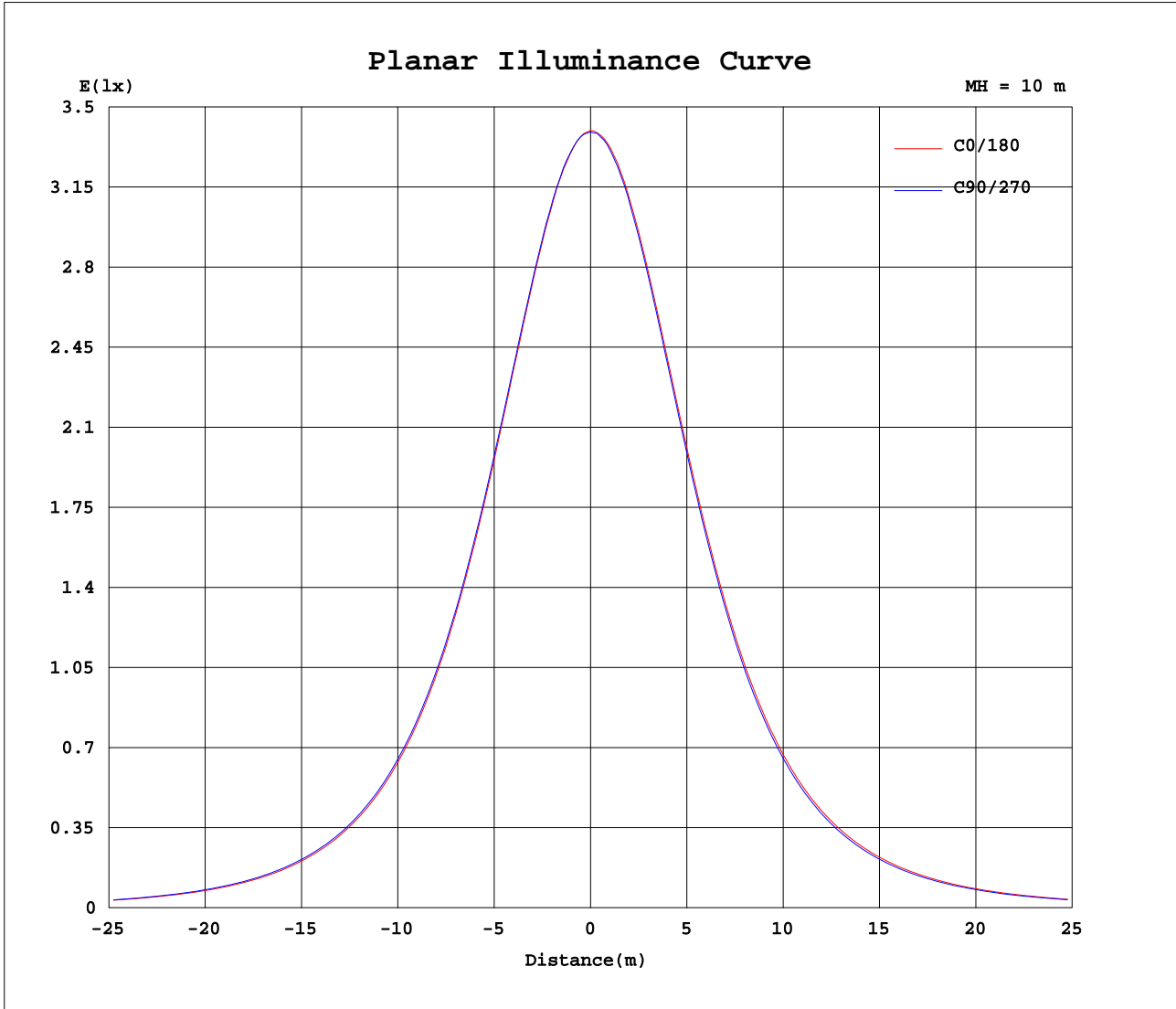
Test:U:240.7V I:0.0400A P:8.560W PF:0.8760 Lamp Flux:787.069x1 lm		
NAME: ID8W-WF	TYPE:8W	WEIGHT:
DIM.:	SPEC.:5700K	SERIAL No.:
MFR.: EVERFINE	SUR.:0.042	PROTECTION ANGLE:



C Range: 0 - 360DEG
 C Interval: 45.0DEG
 Test Speed: HIGH
 Temperature:25.3DEG
 Operators:DAMIN
 Test Date:2020-07-20

γ Range: 0 - 90DEG
 γ Interval: 1.0DEG
 Test System:EVERFINE GO-2000A_V1 SYSTEM V2.0.276
 Humidity:65.0%
 Test Distance:10.237m [K=1.0000]
 Remarks:

Planar Illuminance Curve



C Range: 0 - 360DEG
 C Interval: 45.0DEG
 Test Speed: HIGH
 Temperature: 25.3DEG
 Operators: DAMIN
 Test Date: 2020-07-20

γ Range: 0 - 90DEG
 γ Interval: 1.0DEG
 Test System: EVERFINE GO-2000A_V1 SYSTEM V2.0.276
 Humidity: 65.0%
 Test Distance: 10.237m [K=1.0000]
 Remarks:

