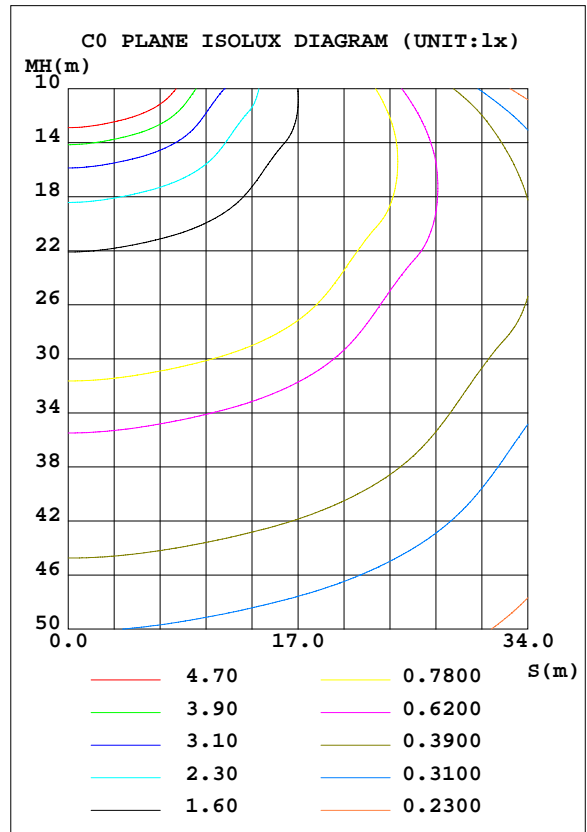
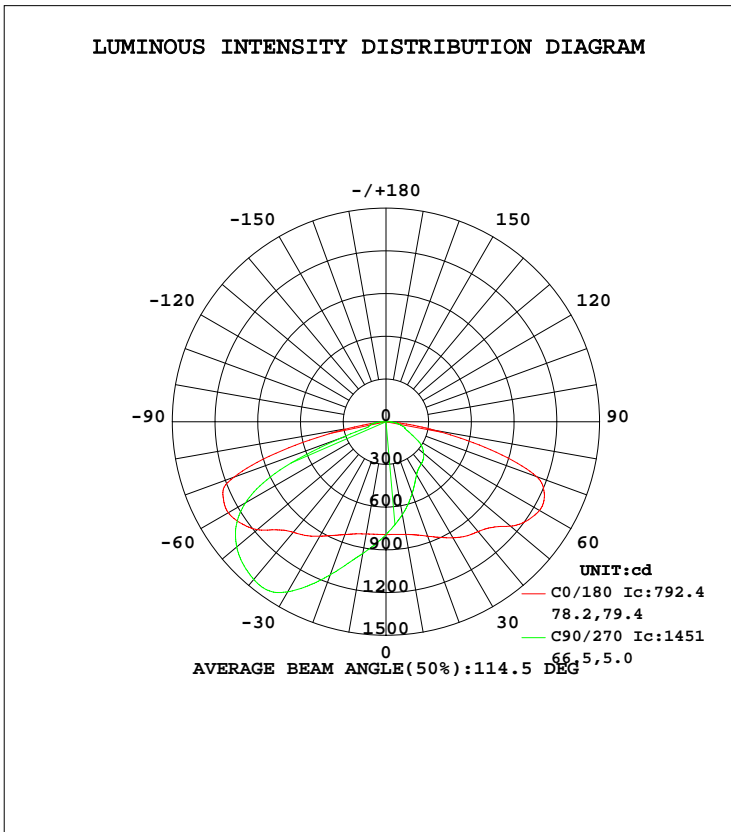


EVERFINE GONIOPHOTOMETERS SYSTEM TEST REPORT

LUMINAIRE PHOTOMETRIC TEST REPORT

Test:U:22.79V I:1.759A P:40.1W PF:1.000 Freq:50.00Hz Lamp Flux:6680x1 lm		
	TYPE:LED	WEIGHT:
	DIM.:	SERIAL No.:
	SUR.:	Shielding Angle:

DATA OF LAMP		PHOTOMETRIC DATA Eff: 166.6 lm/W			
MODEL	5050			S/MH(C0/180)	1.92
NOMINAL POWER(W)	40	LOR(%)	100.0	S/MH(C90/270)	2.19
RATED VOLTAGE(V)	220.0	TOTAL FLUX(lm)	6680	η UP, DN(C0-180)	0.2,30.7
NOMINAL FLUX(lm)	6680	CIE CLASS	DIRECT	η UP, DN(C180-360)	0.1,68.9
LAMPS INSIDE	1	η up(%)	0.3	CIBSE SHR NOM	1.75
TEST VOLTAGE(V)	220	η down(%)	99.7	CIBSE SHR MAX	1.75



C Range: 0 - 360DEG
 C Interval: 45.0DEG
 Test Speed: HIGH
 Temperature:25.3DEG
 Operators:
 Test Date:2018-09-15

γ Range: 0 - 180DEG
 γ Interval: 0.5DEG
 Test System:EVERFINE GO-2000A_V1 SYSTEM V2.0.362
 Humidity:65.0%
 Test Distance:7.684m [K=1.0000]
 Remarks: