

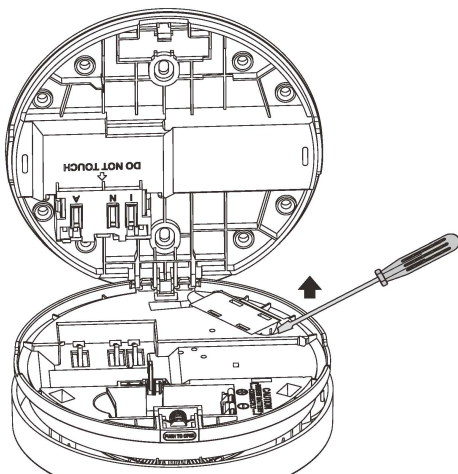
INSTALLATION OF THE RF MODULE

240V Hard Wired EP-VC-240-10

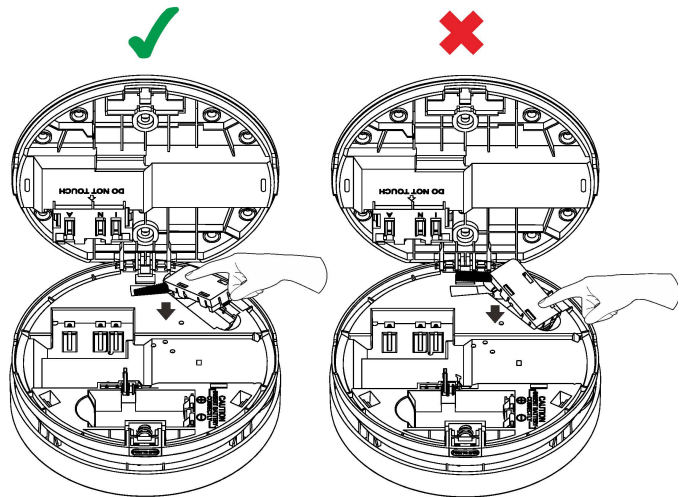
IMPORTANT INFORMATION PRIOR TO INSTALLATION

The RF Module must be placed in the smoke alarm before the battery is inserted.
Please follow the steps outlined below.

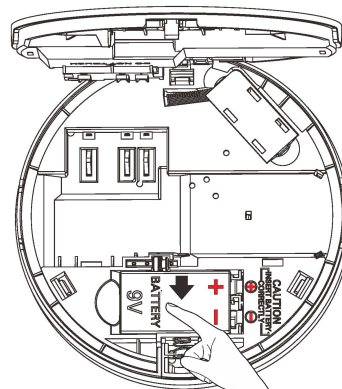
1. Use a screwdriver to remove the empty cover.



2. When inserting the RF module, ensure the antenna is inserted first (see diagram below).



3. Insert the battery into the slot. Ensure the right side of positive and negative pole.



SMOKE ALARM ACTIVATION

10YR RF BATTERY EP-RANG-RF-10

1. Press the test/hush button and hold for >3 seconds until the LED light appears, and release the button within 2 seconds.
2. The unit will generate a "beep" indicating that the Smoke Alarm has been activated correctly.

HOW TO DEACTIVATE A SMOKE ALARM

10YR RF BATTERY EP-RANG-RF-10

IMPORTANT INFORMATION PRIOR TO DEACTIVATION

Deactivating this alarm should only be performed if you need to dispose of the smoke alarm or if you need to cease a nuisance alarm which is caused by a failure of the smoke alarm.

1. Press the test/hush button six times within three seconds, then the LED light will stay on for around 4 seconds.
2. After 4 seconds, the LED light will flash quickly.
3. During the rapid flashing of the product, press the test button six times again, the product will beep with a sound indicating that the product is no longer active.

NOTE: There will be no alarm functions while in this status. You must reactivate the alarm before use.

HOW TO PAIR YOUR SMOKE ALARMS

1. Press the test button 3 times quickly which activates the pairing mode.
2. Pair a second alarm by repeating the above step.
3. The red LED indicator light will flash and beep, meaning the installation has been completed.
4. Repeat the above process with all additional RF alarms.