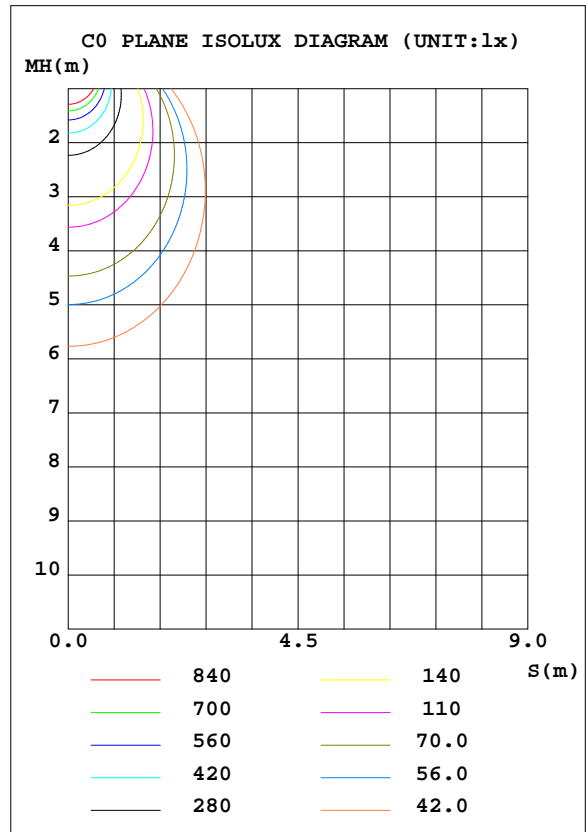
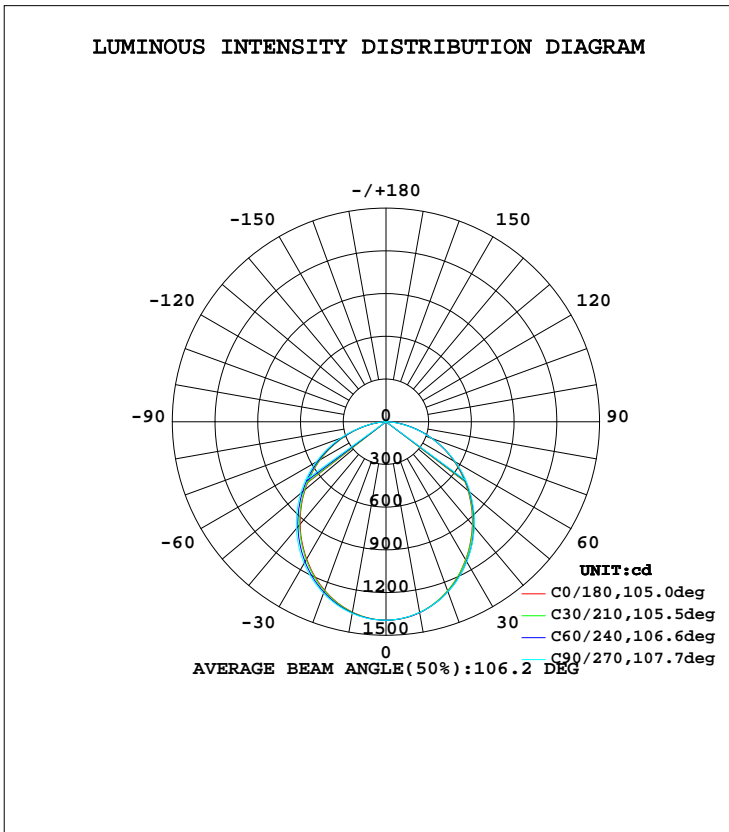


LUMINAIRE PHOTOMETRIC TEST REPORT

Test:U:240.3V I:0.1660A P:38.00W PF:0.9530 Lamp Flux:3755.91x1 lm		
NAME: LL36W-CC-B	TYPE:36W	WEIGHT:
DIM.:	SPEC.:5700K	SERIAL No.:1
MFR.:	SUR.:1.175*0.03	PROTECTION ANGLE:

DATA OF LAMP		PHOTOMETRIC DATA Eff: 98.84 lm/W			
MODEL	LL36W-CC-B	Imax(cd)	1394	S/MH(C0/180)	1.20
NOMINAL POWER(W)	36	LOR(%)	100.0	S/MH(C90/270)	1.22
RATED VOLTAGE(V)	240	TOTAL FLUX(lm)	3755.9	η UP, DN(C0-180)	0.7,49.1
NOMINAL FLUX(lm)	3755.91	CIE CLASS	DIRECT	η UP, DN(C180-360)	0.7,49.5
LAMPS INSIDE	1	η up(%)	1.4	CIBSE SHR NOM	1.25
TEST VOLTAGE(V)	240.3	η down(%)	98.6	CIBSE SHR MAX	1.35



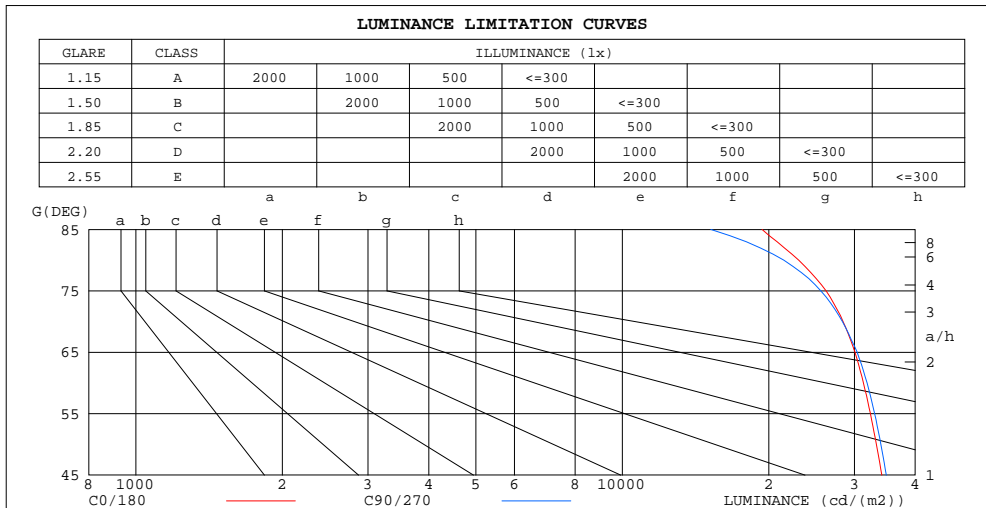
C Range: 0 - 360DEG
 C Interval: 30.0DEG
 Test Speed: HIGH
 Temperature:25.3DEG
 Operators:DAMIN
 Test Date:2020-12-07

γ Range: 0 - 180DEG
 γ Interval: 1.0DEG
 Test System:EVERFINE GO-2000A_V1 SYSTEM V2.0.276
 Humidity:65.0%
 Test Distance:10.237m [K=1.0000]
 Remarks:

ZONAL FLUX DIAGRAM
AND LUMINANCE LIMITATION CURVES

ZONAL FLUX DIAGRAM:

γ	C0	C45	C90	C135	C180	C225	C270	C315	γ	Φ zone	Φ total	Φ lum,lamp
10	1361	1360	1360	1354	1358	1361	1366	1369	0- 10	131.5	131.5	3.5,3.5
20	1264	1267	1271	1257	1260	1269	1282	1283	10- 20	372.7	504.2	13.4,13.4
30	1119	1127	1135	1113	1114	1129	1149	1147	20- 30	554.6	1059	28.2,28.2
40	943.9	954.0	964.8	936.7	937.8	953.6	979.0	976.3	30- 40	653.9	1713	45.6,45.6
50	752.4	761.0	771.2	740.8	742.1	756.4	782.4	781.8	40- 50	663.4	2376	63.3,63.3
60	550.7	556.3	561.7	532.0	533.5	544.3	566.9	571.6	50- 60	587.7	2964	78.9,78.9
70	342.1	345.9	342.0	316.4	316.8	323.8	339.6	348.3	60- 70	438.6	3402	90.6,90.6
80	140.8	144.8	131.6	114.7	114.6	116.4	122.4	136.8	70- 80	240.9	3643	97,97
90	12.58	12.15	4.581	5.046	4.230	6.260	4.625	11.08	80- 90	59.64	3703	98.6,98.6
100	4.897	5.079	4.548	4.343	3.573	5.742	4.631	4.903	90-100	5.415	3708	98.7,98.7
110	6.152	6.319	6.323	6.057	5.101	6.386	5.602	5.733	100-110	5.682	3714	98.9,98.9
120	7.731	7.993	8.454	8.052	6.905	7.711	7.458	7.049	110-120	6.758	3721	99.1,99.1
130	9.582	9.873	10.49	10.15	8.822	9.423	9.394	8.611	120-130	7.706	3729	99.3,99.3
140	11.48	11.66	12.32	12.05	10.30	10.81	10.78	10.13	130-140	7.989	3736	99.5,99.5
150	13.29	13.28	13.74	13.73	11.96	12.29	12.24	11.78	140-150	7.512	3744	99.7,99.7
160	15.01	14.70	14.91	15.07	13.56	13.55	13.50	13.29	150-160	6.231	3750	99.8,99.8
170	16.36	15.71	15.72	16.03	15.07	14.66	14.53	14.64	160-170	4.170	3754	100,100
180	16.96	16.15	15.95	16.36	16.89	16.21	15.91	16.36	170-180	1.503	3756	100,100
DEG	LUMINOUS INTENSITY:cd									UNIT:lm		



LUMINANCE cd/(m2)		
G(DEG)	C0/180	C90/270
85	19382	15207
80	23047	21485
75	26234	25595
70	28441	28341
65	30062	30396
60	31312	31843
55	32354	33010
50	33281	34007
45	34162	34888

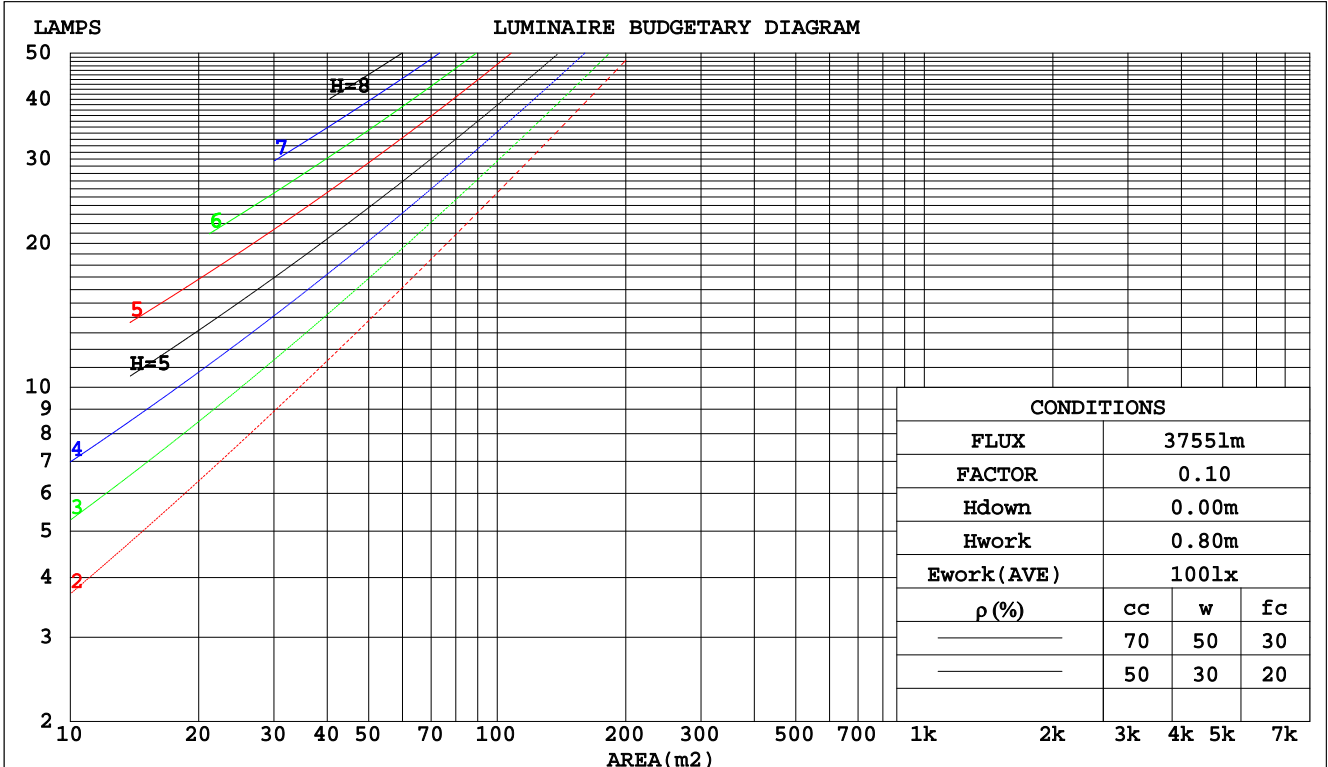
C Range: 0 - 360DEG
C Interval: 30.0DEG
Test Speed: HIGH
Temperature:25.3DEG
Operators:DAMIN
Test Date:2020-12-07

γ Range: 0 - 180DEG
 γ Interval: 1.0DEG
Test System:EVERFINE GO-2000A_V1 SYSTEM V2.0.276
Humidity:65.0%
Test Distance:10.237m [K=1.0000]
Remarks:

CU AND LUMINAIRE BUDGETARY ESTIMATE DIAGRAM

Test:U:240.3V I:0.1660A P:38.00W PF:0.9530 Lamp Flux:3755.91x1 lm		
NAME: LL36W-CC-B	TYPE:36W	WEIGHT:
DIM.:	SPEC.:5700K	SERIAL No.:1
MFR.:	SUR.:1.175*0.03	PROTECTION ANGLE:

pcc	80%			70%			50%			30%			10%			0
	50%	30%	10%	50%	30%	10%	50%	30%	10%	50%	30%	10%	50%	30%	10%	0
pw																
pfc	20%			20%			20%			20%			20%			0
RCR	RCR:Room Cavity Ratio															
	Coefficients of Utilization(CU)															
0.0	1.19	1.19	1.19	1.16	1.16	1.16	1.10	1.10	1.10	1.05	1.05	1.05	1.01	1.01	1.01	.99
1.0	1.04	.90	.96	1.02	.98	.94	.97	.94	.91	.93	.90	.88	.89	.87	.85	.83
2.0	.91	.84	.78	.89	.83	.77	.85	.80	.75	.82	.77	.73	.78	.75	.72	.69
3.0	.80	.72	.65	.78	.71	.65	.75	.69	.63	.72	.67	.62	.69	.65	.61	.59
4.0	.71	.62	.56	.69	.61	.55	.67	.60	.54	.64	.58	.53	.62	.57	.52	.50
5.0	.63	.54	.48	.62	.54	.48	.60	.53	.47	.58	.51	.46	.56	.50	.46	.44
6.0	.57	.48	.42	.56	.48	.42	.54	.47	.41	.52	.46	.41	.51	.45	.40	.38
7.0	.52	.43	.37	.51	.43	.37	.49	.42	.36	.48	.41	.36	.46	.40	.36	.34
8.0	.47	.39	.33	.47	.39	.33	.45	.38	.33	.44	.37	.32	.43	.37	.32	.30
9.0	.43	.35	.30	.43	.35	.30	.42	.34	.29	.40	.34	.29	.39	.33	.29	.27
10.0	.40	.32	.27	.40	.32	.27	.38	.32	.27	.37	.31	.27	.36	.31	.26	.25



C Range: 0 - 360DEG
 C Interval: 30.0DEG
 Test Speed: HIGH
 Temperature:25.3DEG
 Operators:DAMIN
 Test Date:2020-12-07

γ Range: 0 - 180DEG
 γ Interval: 1.0DEG
 Test System:EVERFINE GO-2000A_V1 SYSTEM V2.0.276
 Humidity:65.0%
 Test Distance:10.237m [K=1.0000]
 Remarks:

WEC AND CCEC

Test:U:240.3V I:0.1660A P:38.00W PF:0.9530 Lamp Flux:3755.91x1 lm		
NAME: LL36W-CC-B	TYPE:36W	WEIGHT:
DIM.:	SPEC.:5700K	SERIAL No.:1
MFR.:	SUR.:1.175*0.03	PROTECTION ANGLE:

ρcc	80%			70%			50%			30%			10%			0
ρw	50%	30%	10%	50%	30%	10%	50%	30%	10%	50%	30%	10%	50%	30%	10%	0
ρfc	20%			20%			20%			20%			20%			0
RCR	RCR:Room Cavity Ratio						Wall Exitance Coefficients(WEC)									
0.0																
1.0	.301	.171	.054	.294	.168	.053	.280	.161	.051	.267	.154	.049	.255	.148	.048	
2.0	.285	.156	.048	.278	.153	.047	.266	.148	.046	.255	.143	.045	.244	.138	.044	
3.0	.265	.141	.042	.259	.139	.042	.248	.134	.041	.238	.130	.040	.228	.126	.039	
4.0	.245	.127	.037	.240	.125	.037	.230	.122	.036	.221	.119	.036	.212	.115	.035	
5.0	.227	.115	.033	.222	.114	.033	.213	.111	.033	.205	.108	.032	.198	.106	.032	
6.0	.210	.105	.030	.206	.104	.030	.199	.102	.030	.191	.099	.029	.185	.097	.029	
7.0	.196	.097	.027	.192	.096	.027	.185	.094	.027	.179	.092	.027	.173	.090	.026	
8.0	.183	.090	.025	.180	.089	.025	.174	.087	.025	.168	.085	.025	.162	.083	.024	
9.0	.172	.083	.023	.169	.082	.023	.163	.081	.023	.158	.079	.023	.153	.078	.022	
10.0	.162	.078	.022	.159	.077	.021	.154	.075	.021	.149	.074	.021	.145	.073	.021	

ρcc	80%			70%			50%			30%			10%			0
ρw	50%	30%	10%	50%	30%	10%	50%	30%	10%	50%	30%	10%	50%	30%	10%	0
ρfc	20%			20%			20%			20%			20%			0
RCR	RCR:Room Cavity Ratio						Ceiling Cavity Exitance Coefficients(CCEC)									
0.0	.201	.201	.201	.172	.172	.172	.117	.117	.117	.067	.067	.067	.022	.022	.022	
1.0	.191	.167	.146	.163	.143	.126	.112	.099	.087	.064	.057	.050	.021	.018	.016	
2.0	.182	.143	.110	.156	.123	.095	.107	.085	.066	.062	.049	.039	.020	.016	.013	
3.0	.174	.125	.086	.150	.108	.075	.103	.075	.052	.059	.044	.031	.019	.014	.010	
4.0	.167	.112	.070	.143	.097	.061	.098	.067	.043	.057	.039	.025	.018	.013	.008	
5.0	.159	.101	.059	.137	.088	.051	.094	.061	.036	.055	.036	.021	.018	.012	.007	
6.0	.152	.093	.051	.131	.081	.044	.090	.056	.031	.052	.033	.019	.017	.011	.006	
7.0	.145	.086	.045	.125	.075	.039	.086	.052	.028	.050	.031	.016	.016	.010	.005	
8.0	.139	.080	.040	.120	.070	.035	.083	.049	.025	.048	.029	.015	.016	.009	.005	
9.0	.133	.075	.037	.115	.066	.032	.079	.046	.023	.046	.027	.014	.015	.009	.004	
10.0	.127	.071	.034	.110	.062	.029	.076	.044	.021	.044	.026	.013	.014	.008	.004	

C Range: 0 - 360DEG
 C Interval: 30.0DEG
 Test Speed: HIGH
 Temperature:25.3DEG
 Operators:DAMIN
 Test Date:2020-12-07

γ Range: 0 - 180DEG
 γ Interval: 1.0DEG
 Test System:EVERFINE GO-2000A_V1 SYSTEM V2.0.276
 Humidity:65.0%
 Test Distance:10.237m [K=1.0000]
 Remarks:

Uncorrected UGR Table

Test:U:240.3V I:0.1660A P:38.00W PF:0.9530 Lamp Flux:3755.91x1 lm										
NAME: LL36W-CC-B					TYPE:36W			WEIGHT:		
DIM.:					SPEC.:5700K			SERIAL No.:1		
MFR.:					SUR.:1.175*0.03			PROTECTION ANGLE:		
ceiling/cavity	0.7	0.7	0.5	0.5	0.3	0.7	0.7	0.5	0.5	0.3
walls	0.5	0.3	0.5	0.3	0.3	0.5	0.3	0.5	0.3	0.3
working plane	0.2	0.2	0.2	0.2	0.2	0.2	0.2	0.2	0.2	0.2
Room dimensions	Viewed crosswise					Viewed endwise				
x = 2H y = 2H	24.8	26.3	25.1	26.5	26.8	24.9	26.4	25.2	26.6	26.8
3H	26.3	27.7	26.6	27.9	28.2	26.4	27.7	26.7	28.0	28.3
4H	26.9	28.2	27.2	28.5	28.8	26.9	28.2	27.3	28.5	28.8
6H	27.3	28.5	27.7	28.8	29.1	27.3	28.5	27.7	28.8	29.1
8H	27.4	28.6	27.8	28.9	29.3	27.4	28.6	27.8	28.9	29.2
12H	27.5	28.6	27.9	29.0	29.3	27.4	28.6	27.8	28.9	29.2
4H 2H	25.4	26.7	25.8	27.0	27.3	25.5	26.8	25.8	27.1	27.4
3H	27.1	28.2	27.5	28.6	28.9	27.2	28.3	27.5	28.6	28.9
4H	27.8	28.9	28.2	29.2	29.6	27.8	28.9	28.2	29.2	29.6
6H	28.4	29.3	28.8	29.7	30.1	28.3	29.3	28.8	29.6	30.0
8H	28.5	29.4	29.0	29.8	30.2	28.5	29.3	28.9	29.7	30.1
12H	28.6	29.4	29.1	29.8	30.3	28.5	29.3	29.0	29.7	30.2
8H 4H	28.1	28.9	28.5	29.3	29.8	28.1	29.0	28.5	29.3	29.8
6H	28.8	29.5	29.2	29.9	30.4	28.7	29.5	29.2	29.9	30.3
8H	29.0	29.7	29.5	30.1	30.6	29.0	29.6	29.4	30.0	30.5
12H	29.2	29.8	29.7	30.2	30.7	29.1	29.6	29.6	30.1	30.6
12H 4H	28.1	28.9	28.5	29.3	29.7	28.1	28.9	28.6	29.3	29.7
6H	28.8	29.5	29.3	29.9	30.4	28.8	29.4	29.3	29.9	30.4
8H	29.1	29.7	29.6	30.1	30.6	29.1	29.6	29.6	30.1	30.6
Variations with the observer position at spacings:										
S = 1.0H	+ 0.2 / - 0.2					+ 0.2 / - 0.2				
1.5H	+ 0.2 / - 0.3					+ 0.2 / - 0.3				
2.0H	+ 0.2 / - 0.3					+ 0.2 / - 0.3				

CIE Pub.117 Corrected 3756 lm Total Lamp Luminous Flux.(8log(F/F0) = 4.6)

C Range: 0 - 360DEG
 C Interval: 30.0DEG
 Test Speed: HIGH
 Temperature:25.3DEG
 Operators:DAMIN
 Test Date:2020-12-07

γ Range: 0 - 180DEG
 γ Interval: 1.0DEG
 Test System:EVERFINE GO-2000A_V1 SYSTEM V2.0.276
 Humidity:65.0%
 Test Distance:10.237m [K=1.0000]
 Remarks:

UTILIZATION FACTORS TABLE

Test:U:240.3V I:0.1660A P:38.00W PF:0.9530 Lamp Flux:3755.91x1 lm		
NAME: LL36W-CC-B	TYPE:36W	WEIGHT:
DIM.:	SPEC.:5700K	SERIAL No.:1
MFR.:	SUR.:1.175*0.03	PROTECTION ANGLE:

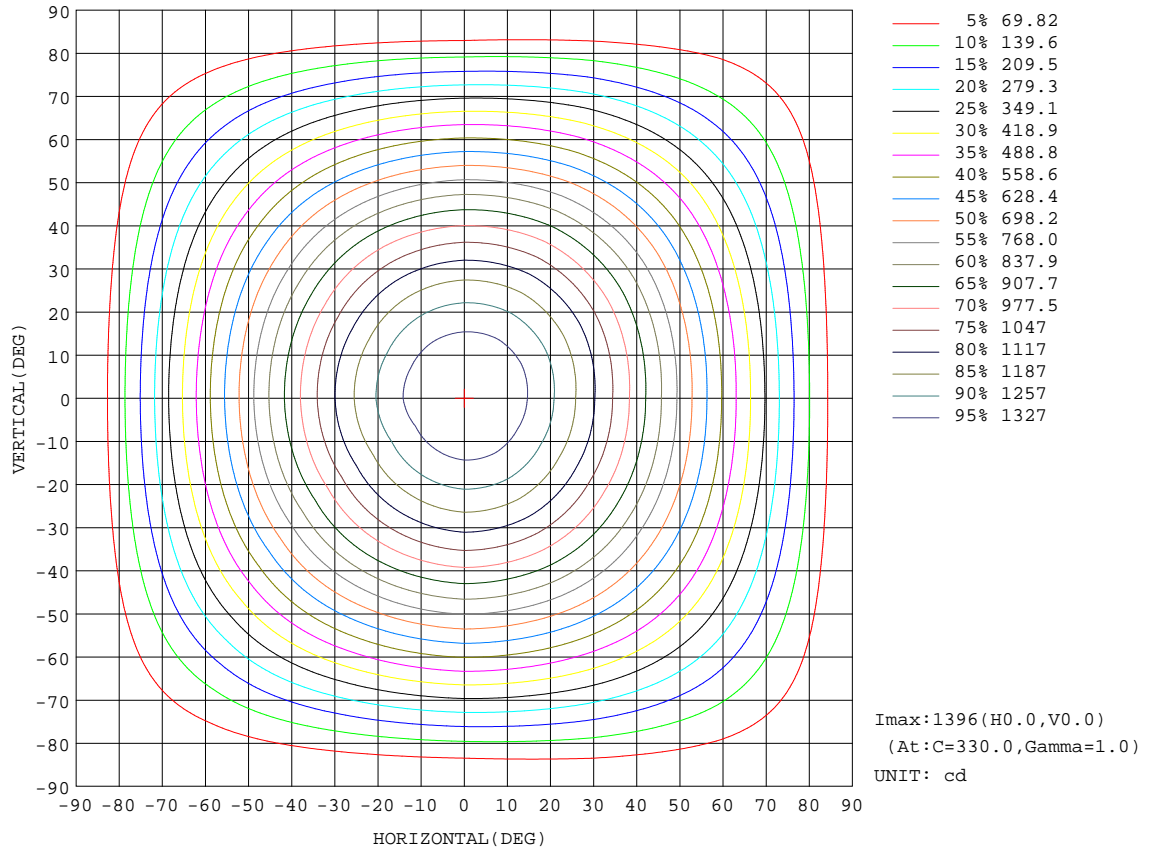
REFLECTANCE										
Ceiling	0.8	0.8	0.8	0.7	0.7	0.7	0.5	0.5	0.5	0
Walls	0.7	0.5	0.3	0.7	0.5	0.3	0.7	0.5	0.3	0
Working plane	0.2	0.2	0.2	0.2	0.2	0.2	0.2	0.2	0.2	0
ROOM INDEX	UTILIZATION FACTORS(PERCENT) $k(RI) \times RCR = 5$									
k = 0.60	58	47	40	57	46	40	56	46	39	33
0.80	68	57	49	67	56	49	65	55	49	42
1.00	76	65	58	75	65	58	73	66	57	50
1.25	83	73	66	82	72	66	79	71	65	57
1.50	88	79	72	87	78	71	83	76	70	62
2.00	95	87	80	93	85	80	90	83	78	70
2.50	99	91	85	97	90	84	93	87	82	74
3.00	102	96	90	100	94	89	96	91	87	78
4.00	106	101	96	104	99	95	99	95	92	83
5.00	109	104	100	106	102	98	101	98	95	85
ROOM INDEX	UF(total)									Direct
According to DIN EN 13032-2 2004			Suspended				SHRNOM = 1.25			

C Range: 0 - 360DEG
 C Interval: 30.0DEG
 Test Speed: HIGH
 Temperature:25.3DEG
 Operators:DAMIN
 Test Date:2020-12-07

γ Range: 0 - 180DEG
 γ Interval: 1.0DEG
 Test System:EVERFINE GO-2000A_V1 SYSTEM V2.0.276
 Humidity:65.0%
 Test Distance:10.237m [K=1.0000]
 Remarks:

ISOCANDELA DIAGRAM

Test:U:240.3V I:0.1660A P:38.00W PF:0.9530 Lamp Flux:3755.91x1 lm		
NAME: LL36W-CC-B	TYPE:36W	WEIGHT:
DIM.:	SPEC.:5700K	SERIAL No.:1
MFR.:	SUR.:1.175*0.03	PROTECTION ANGLE:

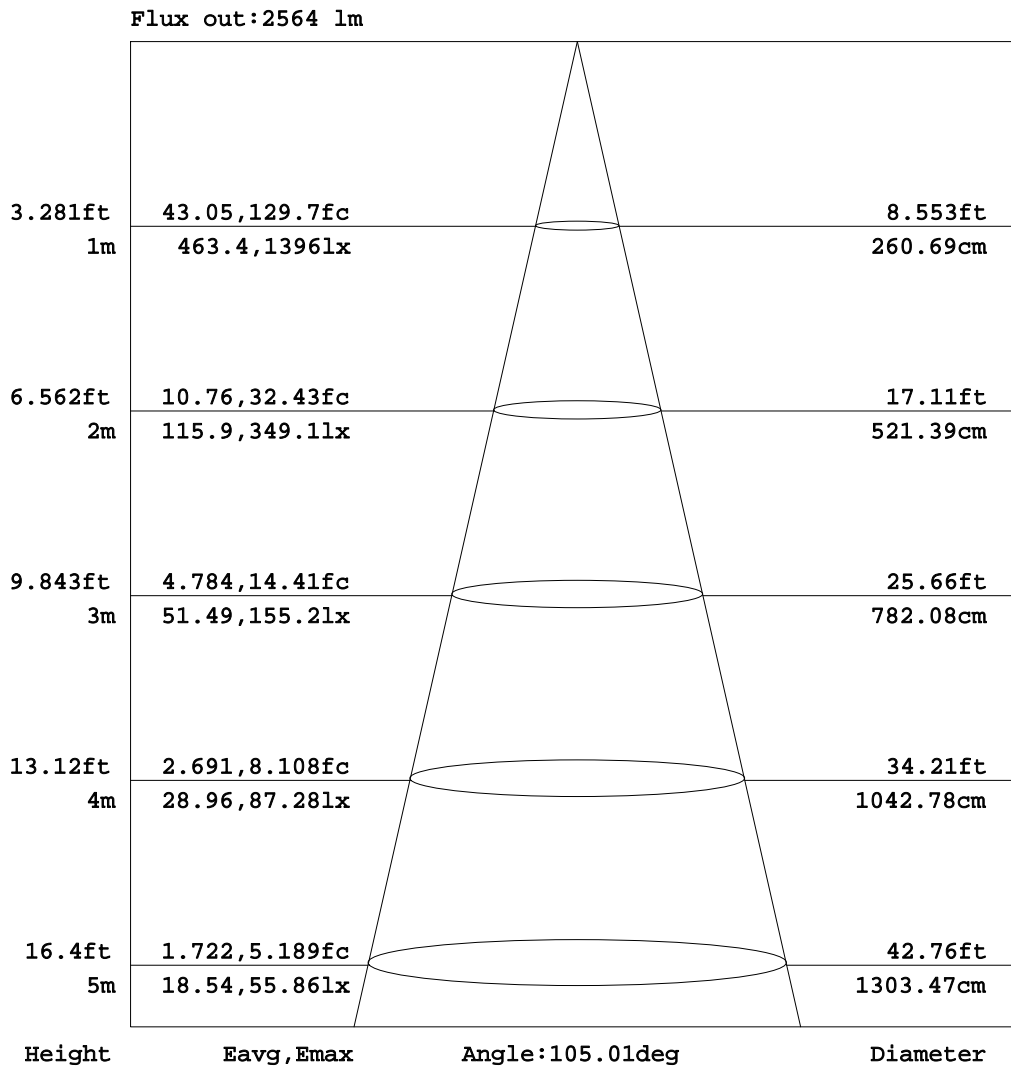


C Range: 0 - 360DEG
 C Interval: 30.0DEG
 Test Speed: HIGH
 Temperature:25.3DEG
 Operators:DAMIN
 Test Date:2020-12-07

γ Range: 0 - 180DEG
 γ Interval: 1.0DEG
 Test System:EVERFINE GO-2000A_V1 SYSTEM V2.0.276
 Humidity:65.0%
 Test Distance:10.237m [K=1.0000]
 Remarks:

AAI Figure

Test:U:240.3V I:0.1660A P:38.00W PF:0.9530 Lamp Flux:3755.91x1 lm		
NAME: LL36W-CC-B	TYPE:36W	WEIGHT:
DIM.:	SPEC.:5700K	SERIAL No.:1
MFR.:	SUR.:1.175*0.03	PROTECTION ANGLE:



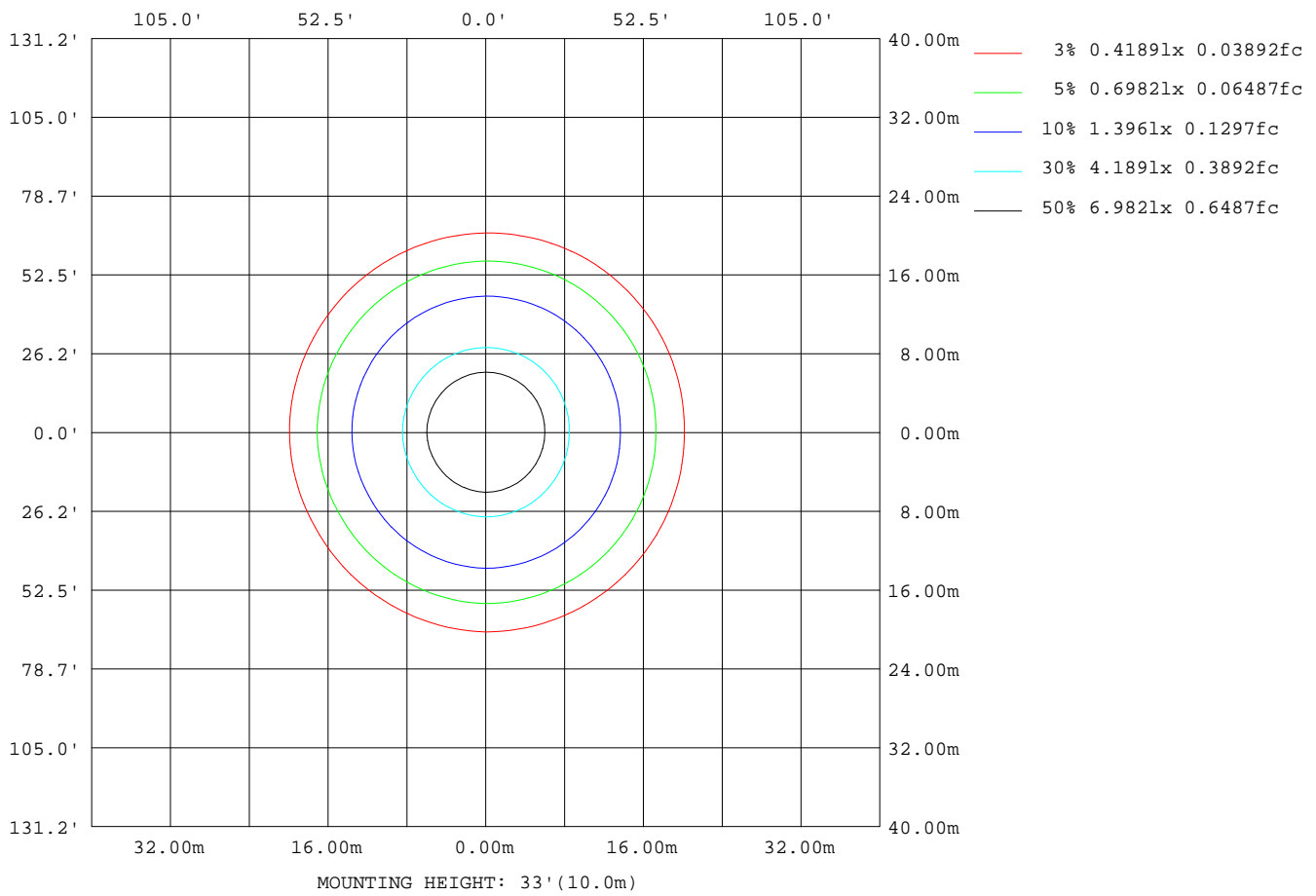
Note:The Curves indicate the illuminated area and the average illumination when the luminaire is at different distance.

C Range: 0 - 360DEG
 C Interval: 30.0DEG
 Test Speed: HIGH
 Temperature:25.3DEG
 Operators:DAMIN
 Test Date:2020-12-07

γ Range: 0 - 180DEG
 γ Interval: 1.0DEG
 Test System:EVERFINE GO-2000A_V1 SYSTEM V2.0.276
 Humidity:65.0%
 Test Distance:10.237m [K=1.0000]
 Remarks:

ISOLUX DIAGRAM

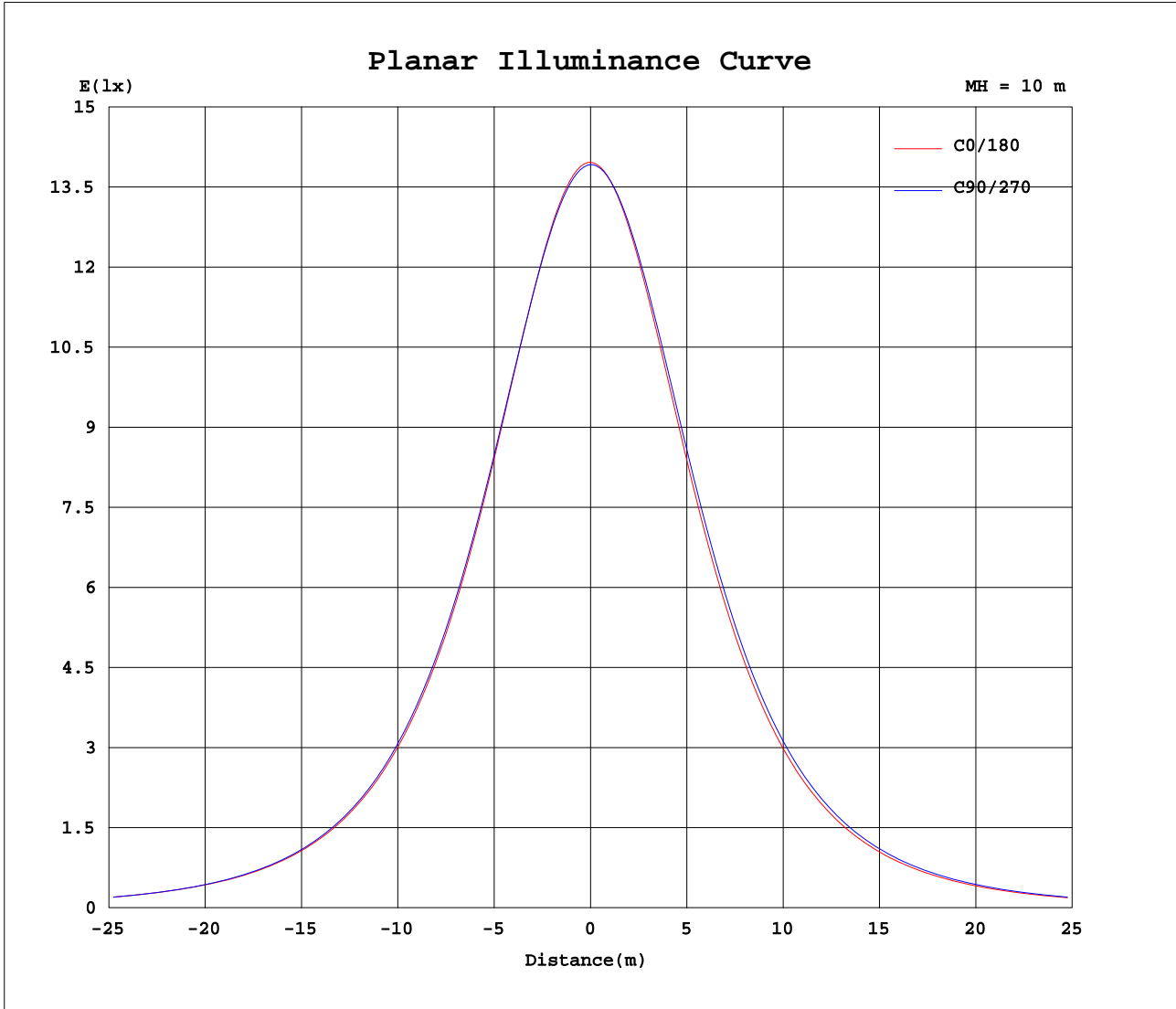
Test:U:240.3V I:0.1660A P:38.00W PF:0.9530 Lamp Flux:3755.91lx1 lm		
NAME: LL36W-CC-B	TYPE:36W	WEIGHT:
DIM.:	SPEC.:5700K	SERIAL No.:1
MFR.:	SUR.:1.175*0.03	PROTECTION ANGLE:



C Range: 0 - 360DEG
 C Interval: 30.0DEG
 Test Speed: HIGH
 Temperature:25.3DEG
 Operators:DAMIN
 Test Date:2020-12-07

γ Range: 0 - 180DEG
 γ Interval: 1.0DEG
 Test System:EVERFINE GO-2000A_V1 SYSTEM V2.0.276
 Humidity:65.0%
 Test Distance:10.237m [K=1.0000]
 Remarks:

Planar Illuminance Curve



C Range: 0 - 360DEG
 C Interval: 30.0DEG
 Test Speed: HIGH
 Temperature: 25.3DEG
 Operators: DAMIN
 Test Date: 2020-12-07

γ Range: 0 - 180DEG
 γ Interval: 1.0DEG
 Test System: EVERFINE GO-2000A_V1 SYSTEM V2.0.276
 Humidity: 65.0%
 Test Distance: 10.237m [K=1.0000]
 Remarks:

LUMINOUS DISTRIBUTION INTENSITY DATA

Test:U:240.3V I:0.1660A P:38.00W PF:0.9530 Lamp Flux:3755.91x1 lm		
NAME: LL36W-CC-B	TYPE:36W	WEIGHT:
DIM.:	SPEC.:5700K	SERIAL No.:1
MFR.:	SUR.:1.175*0.03	PROTECTION ANGLE:

Table--1

UNIT: cd

C(DEG) γ (DEG)	0	30	60	90	120	150	180	210	240	270	300	330							
0	1393	1393	1393	1393	1393	1393	1393	1393	1393	1393	1393	1393							
5	1386	1385	1385	1384	1382	1381	1384	1385	1386	1387	1389	1389							
10	1361	1360	1361	1360	1356	1352	1358	1359	1363	1366	1369	1368							
15	1320	1319	1322	1322	1315	1309	1316	1319	1326	1331	1334	1331							
20	1264	1264	1270	1271	1261	1252	1260	1264	1274	1282	1286	1280							
25	1197	1197	1207	1208	1196	1184	1192	1198	1211	1221	1225	1216							
30	1119	1120	1133	1135	1120	1105	1114	1121	1137	1149	1153	1142							
35	1034	1037	1050	1054	1036	1020	1029	1036	1054	1068	1072	1059							
40	944	947	961	965	946	928	938	944	963	979	983	970							
45	850	854	866	870	849	832	842	848	866	883	888	875							
50	752	756	766	771	749	732	742	748	765	782	788	776							
55	653	656	663	668	646	630	639	644	659	677	683	673							
60	551	555	558	562	539	525	534	538	551	567	575	568							
65	447	452	452	453	431	417	426	429	440	454	465	460							
70	342	346	346	342	323	310	317	320	328	340	351	345							
75	239	243	243	234	217	205	211	213	219	227	241	239							
80	141	145	144	132	119	110	115	115	118	122	137	137							
85	59.4	62.9	60.3	46.8	40.9	36.2	39.0	39.1	39.1	39.8	52.3	60.2							
90	12.6	13.6	10.7	4.58	5.11	4.99	4.23	6.12	6.40	4.62	8.16	14.0							
95	4.60	5.07	4.96	3.78	4.04	4.26	3.01	5.28	5.86	4.06	4.83	4.98							
100	4.90	5.23	4.93	4.55	4.39	4.29	3.57	5.61	5.87	4.63	4.86	4.95							
105	5.42	5.67	5.53	5.36	5.26	5.01	4.29	5.99	6.00	5.24	5.24	5.32							
110	6.15	6.35	6.29	6.32	6.18	5.93	5.10	6.39	6.38	5.60	5.65	5.82							
115	6.90	7.12	7.10	7.35	7.17	6.93	5.98	6.84	7.17	6.51	6.25	6.39							
120	7.73	7.99	8.00	8.45	8.16	7.95	6.90	7.39	8.04	7.46	7.00	7.10							
125	8.64	8.88	8.99	9.49	9.23	8.94	7.87	8.15	8.91	8.43	7.89	7.87							
130	9.58	9.77	9.97	10.5	10.3	9.98	8.82	9.02	9.82	9.39	8.84	8.39							
135	10.5	10.7	10.9	11.4	11.3	11.1	9.43	9.65	10.4	9.95	9.44	9.09							
140	11.5	11.6	11.7	12.3	12.2	11.9	10.3	10.5	11.2	10.8	10.3	9.99							
145	12.4	12.4	12.6	13.1	13.0	12.8	11.1	11.3	11.8	11.5	11.1	10.8							
150	13.3	13.2	13.3	13.7	13.7	13.7	12.0	12.1	12.5	12.2	11.9	11.7							
155	14.1	14.1	14.0	14.4	14.4	14.4	12.8	12.8	13.1	12.9	12.7	12.5							
160	15.0	14.8	14.6	14.9	15.0	15.1	13.6	13.5	13.6	13.5	13.3	13.3							
165	15.7	15.4	15.2	15.4	15.5	15.7	14.3	14.0	14.2	14.0	13.9	14.0							
170	16.4	15.8	15.6	15.7	15.9	16.2	15.1	14.6	14.7	14.5	14.6	14.7							
175	16.8	16.2	15.9	15.9	16.2	16.5	16.6	16.0	15.8	15.7	15.8	16.1							
180	17.0	16.3	16.0	16.0	16.2	16.5	16.9	16.4	16.0	15.9	16.2	16.5							

C Range: 0 - 360DEG
 C Interval: 30.0DEG
 Test Speed: HIGH
 Temperature:25.3DEG
 Operators:DAMIN
 Test Date:2020-12-07

γ Range: 0 - 180DEG
 γ Interval: 1.0DEG
 Test System:EVERFINE GO-2000A_V1 SYSTEM V2.0.276
 Humidity:65.0%
 Test Distance:10.237m [K=1.0000]
 Remarks: