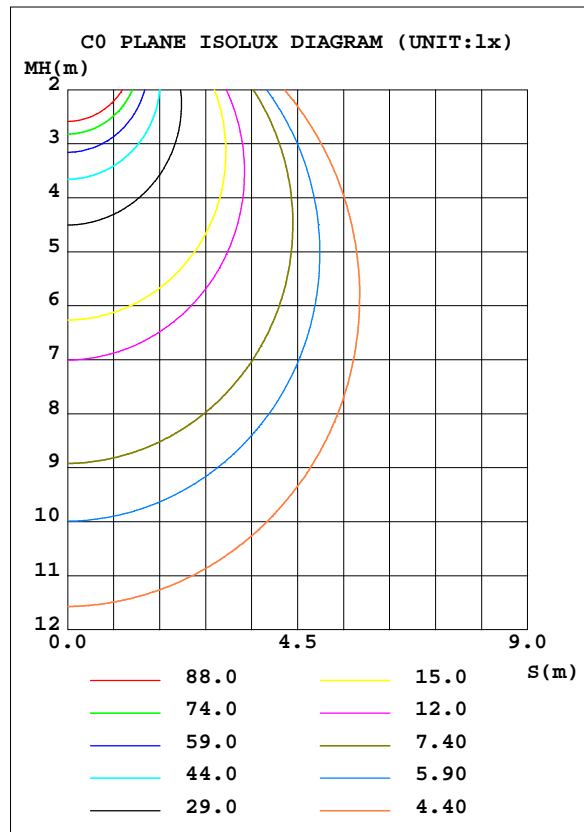
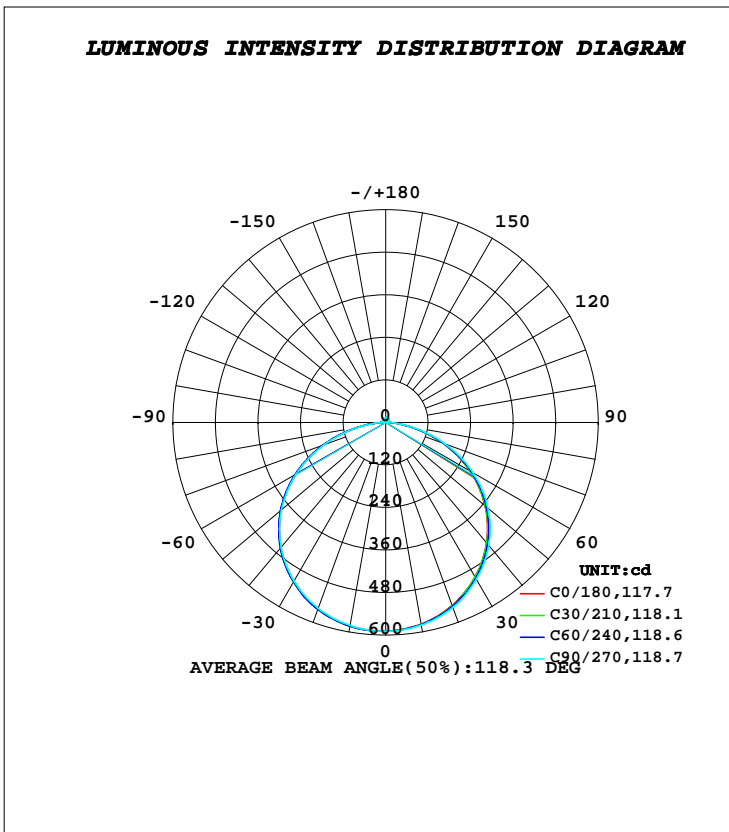


**LUMINAIRE PHOTOMETRIC TEST REPORT**

Test:U:24.000V I:0.7620A P:18.300W PF:1.0000 Freq:0Hz		
Lamp Flux:1838.8lx1 lm		
NAME: FLS100W-NW	TYPE: LED	
MFR.:	DIM.: 1m	

DATA OF LAMP		PHOTOMETRIC DATA Eff: 100.48 lm/W			
MODEL		I <sub>max</sub> (cd)	589.1	S/MH(C0/180)	1.27
NOMINAL POWER(W)	18.1	LOR(%)	100.0	S/MH(C90/270)	1.29
RATED VOLTAGE(V)	24	TOTAL FLUX(lm)	1838.8	η UP, DN(C0-180)	1.4,48.1
NOMINAL FLUX(lm)	1838.81	CIE CLASS	DIRECT	η UP, DN(C180-360)	1.5,49.0
LAMPS INSIDE	1	η up(%)	2.8	CIBSE SHR NOM	1.50
TEST VOLTAGE(V)	24	η down(%)	97.2	CIBSE SHR MAX	1.50



**C Range: 0 - 360DEG**  
**C Interval: 30.0DEG**  
**Test Speed: HIGH**  
**Temperature:25.3DEG**  
**Operators:DAMIN**  
**Test Date:2020-12-15**

**γ Range: 0 - 180DEG**  
**γ Interval: 1.0DEG**  
**Test System:EVERFINE GO-2000A\_V1 SYSTEM V2.00.443**  
**Humidity:65.0%**  
**Test Distance:8.000m [K=0.7063]**  
**Remarks:**

**ZONAL FLUX DIAGRAM**

**ZONAL FLUX DIAGRAM:**

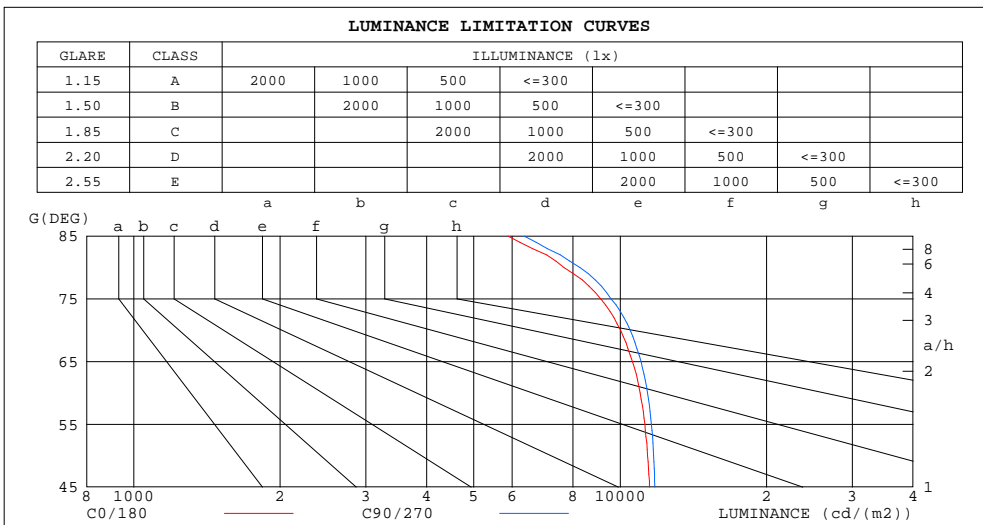
$\gamma$	C0	C45	C90	C135	C180	C225	C270	C315	$\gamma$	$\Phi$ zone	$\Phi$ total	%lum,lamp
10	577.5	578.3	580.2	582.0	583.4	583.1	581.5	579.3	0- 10	55.82	55.82	3.04,3.04
20	549.0	551.0	554.9	558.4	560.5	560.8	558.1	553.0	10- 20	161.1	216.9	11.8,11.8
30	503.8	505.9	511.3	516.5	518.3	520.0	517.2	509.1	20- 30	247.3	464.2	25.2,25.2
40	442.6	445.5	452.4	457.8	460.1	462.5	459.4	449.6	30- 40	303.7	768.0	41.8,41.8
50	365.8	369.0	376.4	382.1	385.5	387.5	384.2	374.1	40- 50	322.3	1090	59.3,59.3
60	274.8	277.6	284.5	289.7	292.4	295.3	292.1	280.7	50- 60	298.2	1388	75.5,75.5
70	171.3	173.6	179.5	183.5	186.6	188.9	185.7	167.3	60- 70	231.4	1620	88.1,88.1
80	66.54	68.10	71.78	74.42	77.64	78.77	75.76	68.25	70- 80	131.5	1751	95.2,95.2
90	4.545	4.758	4.117	5.361	6.609	7.124	5.231	6.505	80- 90	35.17	1787	97.2,97.2
100	4.961	5.035	4.991	5.052	5.726	5.886	6.088	6.195	90-100	5.628	1792	97.5,97.5
110	6.318	6.339	6.316	6.272	6.815	7.044	7.189	7.281	100-110	6.453	1799	97.8,97.8
120	7.673	7.651	7.615	7.657	8.018	8.269	8.290	8.373	110-120	7.268	1806	98.2,98.2
130	9.069	8.927	8.906	9.023	9.204	9.500	9.435	9.492	120-130	7.686	1814	98.6,98.6
140	10.29	10.19	10.24	10.34	10.34	10.64	10.60	10.60	130-140	7.587	1821	99,99
150	11.44	11.39	11.50	11.59	11.39	11.70	11.78	11.71	140-150	6.893	1828	99.4,99.4
160	12.62	12.59	12.75	12.79	12.47	12.71	12.89	12.78	150-160	5.607	1834	99.7,99.7
170	13.58	13.62	13.74	13.74	13.38	13.56	13.82	13.70	160-170	3.727	1837	99.9,99.9
180	14.05	14.14	14.25	14.22	13.99	14.12	14.33	14.27	170-180	1.324	1839	100,100
DEG	LUMINOUS INTENSITY:cd									UNIT:lm		

**C Range: 0 - 360DEG**  
**C Interval: 30.0DEG**  
**Test Speed: HIGH**  
**Temperature:25.3DEG**  
**Operators:DAMIN**  
**Test Date:2020-12-15**

**$\gamma$  Range: 0 - 180DEG**  
 **$\gamma$  Interval: 1.0DEG**  
**Test System:EVERFINE GO-2000A\_V1 SYSTEM V2.00.443**  
**Humidity:65.0%**  
**Test Distance:8.000m [K=0.7063]**  
**Remarks:**

**LUMINANCE LIMITATION CURVES**

Test:U:24.000V I:0.7620A P:18.300W PF:1.0000 Freq:0Hz		
Lamp Flux:1838.8lx1 lm		
NAME: FLS100W-NW	TYPE: LED	
MFR.:	DIM.: 1m	



LUMINANCE cd/(m2)		
G(DEG)	C0/180	C90/270
85	5885	6357
80	7665	8265
75	9117	9584
70	10020	10495
65	10602	11038
60	10992	11378
55	11242	11587
50	11384	11708
45	11491	11779

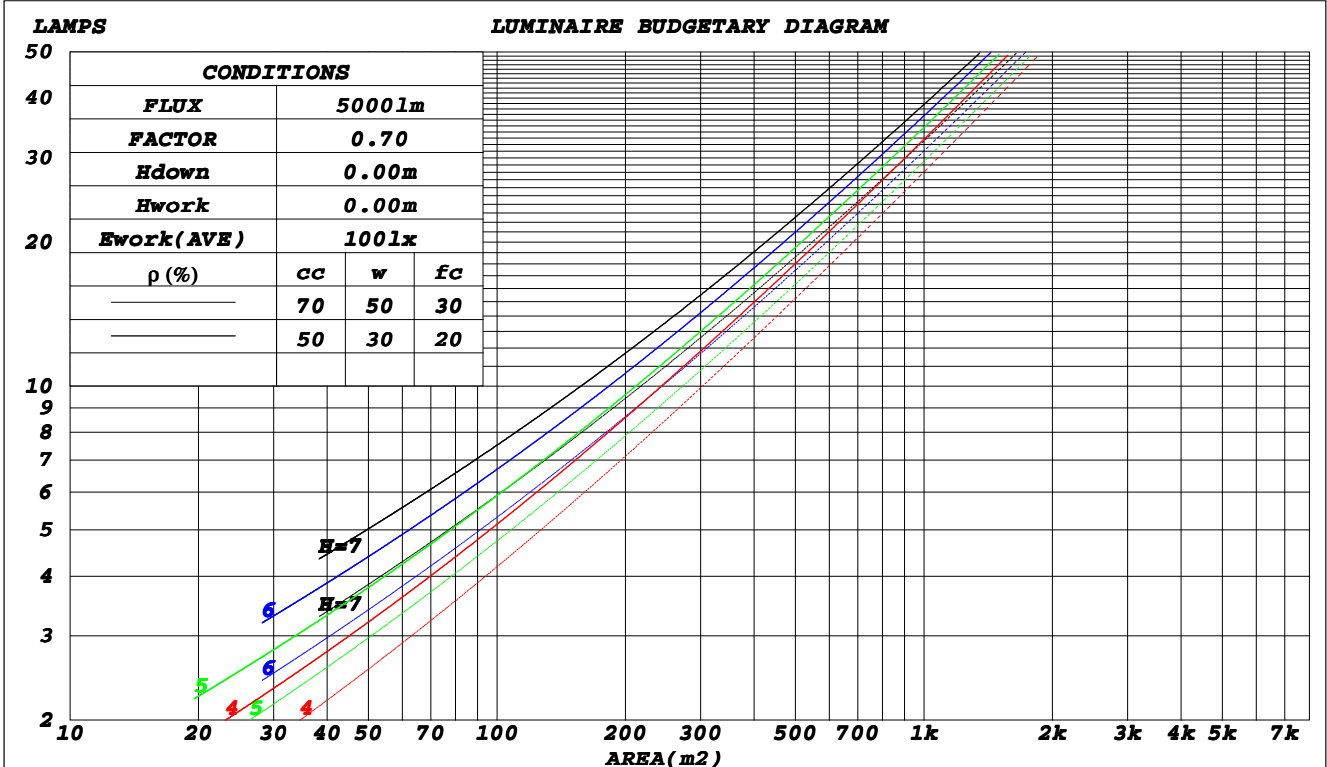
**C Range: 0 - 360DEG**  
**C Interval: 30.0DEG**  
**Test Speed: HIGH**  
**Temperature: 25.3DEG**  
**Operators: DAMIN**  
**Test Date: 2020-12-15**

**γ Range: 0 - 180DEG**  
**γ Interval: 1.0DEG**  
**Test System: EVERFINE GO-2000A\_V1 SYSTEM V2.00.443**  
**Humidity: 65.0%**  
**Test Distance: 8.000m [K=0.7063]**  
**Remarks:**

**CU AND LUMINAIRE BUDGETARY ESTIMATE DIAGRAM**

Test:U:24.000V I:0.7620A P:18.300W PF:1.0000 Freq:0Hz		
Lamp Flux:1838.8lx1 lm		
NAME: FLS100W-NW	TYPE: LED	
MFR.:	DIM.: 1m	

$\rho_{cc}$	80%			70%			50%			30%			10%			0
$\rho_w$	50%	30%	10%	50%	30%	10%	50%	30%	10%	50%	30%	10%	50%	30%	10%	0
$\rho_{fc}$	20%			20%			20%			20%			20%			0
<b>RCR</b>	<b>RCR:Room Cavity Ratio</b>						<b>Coefficients of Utilization(CU)</b>									
0.0	1.18	1.18	1.18	1.15	1.15	1.15	1.10	1.10	1.10	1.04	1.04	1.04	.99	.99	.99	.97
1.0	1.03	.99	.95	1.00	.96	.93	.96	.92	.89	.91	.89	.86	.87	.85	.83	.81
2.0	.89	.82	.77	.87	.81	.76	.83	.78	.73	.80	.75	.71	.76	.72	.69	.67
3.0	.78	.70	.63	.76	.69	.63	.73	.66	.61	.70	.64	.60	.67	.62	.58	.56
4.0	.69	.60	.53	.68	.59	.53	.65	.58	.52	.62	.56	.51	.60	.54	.50	.48
5.0	.62	.52	.46	.60	.52	.45	.58	.50	.45	.56	.49	.44	.53	.48	.43	.41
6.0	.55	.46	.40	.54	.46	.39	.52	.45	.39	.50	.43	.38	.48	.42	.38	.36
7.0	.50	.41	.35	.49	.41	.35	.47	.40	.34	.46	.39	.34	.44	.38	.33	.31
8.0	.46	.37	.31	.45	.37	.31	.43	.36	.31	.42	.35	.30	.40	.34	.30	.28
9.0	.42	.33	.28	.41	.33	.28	.40	.32	.27	.38	.32	.27	.37	.31	.27	.25
10.0	.38	.31	.25	.38	.30	.25	.37	.30	.25	.36	.29	.25	.34	.29	.24	.23



C Range: 0 - 360DEG  
 C Interval: 30.0DEG  
 Test Speed: HIGH  
 Temperature: 25.3DEG  
 Operators: DAMIN  
 Test Date: 2020-12-15

$\gamma$  Range: 0 - 180DEG  
 $\gamma$  Interval: 1.0DEG  
 Test System: EVERFINE GO-2000A\_V1 SYSTEM V2.00.443  
 Humidity: 65.0%  
 Test Distance: 8.000m [K=0.7063]  
 Remarks:

**WEC AND CCEC**

Test:U:24.000V I:0.7620A P:18.300W PF:1.0000 Freq:0Hz		
Lamp Flux:1838.81x1 lm		
NAME: FLS100W-NW	TYPE: LED	
MFR.:	DIM.: 1m	

$\rho_{cc}$	80%			70%			50%			30%			10%			0
$\rho_w$	50%	30%	10%	50%	30%	10%	50%	30%	10%	50%	30%	10%	50%	30%	10%	0
$\rho_{fc}$	20%			20%			20%			20%			20%			0
<b>RCR</b>	<b>RCR:Room Cavity Ratio</b>						<b>Wall Exitance Coefficients(WEC)</b>									
0.0																
1.0	.314	.178	.057	.306	.174	.055	.291	.167	.053	.277	.160	.051	.265	.153	.049	
2.0	.295	.162	.050	.288	.159	.049	.275	.153	.047	.262	.147	.046	.251	.142	.045	
3.0	.273	.145	.043	.266	.143	.043	.255	.138	.042	.244	.134	.041	.234	.129	.040	
4.0	.251	.131	.038	.246	.129	.038	.235	.125	.037	.225	.121	.037	.216	.118	.036	
5.0	.232	.118	.034	.227	.117	.034	.218	.113	.033	.209	.110	.033	.201	.107	.032	
6.0	.215	.108	.031	.211	.106	.031	.202	.104	.030	.194	.101	.030	.187	.098	.029	
7.0	.200	.099	.028	.196	.098	.028	.188	.095	.027	.181	.093	.027	.175	.091	.027	
8.0	.187	.091	.026	.183	.090	.025	.176	.088	.025	.170	.086	.025	.164	.084	.024	
9.0	.175	.085	.024	.172	.084	.023	.165	.082	.023	.160	.080	.023	.154	.078	.023	
10.0	.164	.079	.022	.161	.078	.022	.156	.076	.021	.150	.075	.021	.145	.073	.021	

$\rho_{cc}$	80%			70%			50%			30%			10%			0
$\rho_w$	50%	30%	10%	50%	30%	10%	50%	30%	10%	50%	30%	10%	50%	30%	10%	0
$\rho_{fc}$	20%			20%			20%			20%			20%			0
<b>RCR</b>	<b>RCR:Room Cavity Ratio</b>						<b>Ceiling Cavity Exitance Coefficients(CCEC)</b>									
0.0																
1.0	.212	.212	.212	.181	.181	.181	.124	.124	.124	.071	.071	.071	.023	.023	.023	
2.0	.195	.154	.120	.167	.132	.103	.114	.092	.072	.066	.053	.042	.021	.017	.014	
3.0	.187	.136	.096	.160	.118	.083	.110	.082	.058	.064	.048	.034	.020	.015	.011	
4.0	.180	.123	.080	.154	.106	.070	.106	.074	.049	.061	.043	.029	.020	.014	.010	
5.0	.172	.113	.069	.148	.098	.060	.102	.068	.042	.059	.040	.025	.019	.013	.008	
6.0	.165	.105	.061	.142	.091	.053	.098	.063	.038	.057	.037	.022	.018	.012	.007	
7.0	.158	.098	.055	.136	.085	.048	.094	.059	.034	.055	.035	.020	.018	.011	.007	
8.0	.152	.092	.051	.131	.080	.044	.090	.056	.032	.053	.033	.019	.017	.011	.006	
9.0	.146	.087	.048	.125	.076	.041	.087	.053	.029	.051	.031	.018	.016	.010	.006	
10.0	.140	.083	.045	.121	.072	.039	.084	.051	.028	.049	.030	.017	.016	.010	.005	

**C Range: 0 - 360DEG**  
**C Interval: 30.0DEG**  
**Test Speed: HIGH**  
**Temperature:25.3DEG**  
**Operators:DAMIN**  
**Test Date:2020-12-15**

**$\gamma$  Range: 0 - 180DEG**  
 **$\gamma$  Interval: 1.0DEG**  
**Test System:EVERFINE GO-2000A\_V1 SYSTEM V2.00.443**  
**Humidity:65.0%**  
**Test Distance:8.000m [K=0.7063]**  
**Remarks:**

**UGR(Unified Glare Rating) Table**

Test:U:24.000V I:0.7620A P:18.300W PF:1.0000 Freq:0Hz		
Lamp Flux:1838.8lx1 lm		
NAME: FLS100W-NW	TYPE: LED	
MFR.:	DIM.: 1m	

ceiling/cavity	0.7	0.7	0.5	0.5	0.3	0.7	0.7	0.5	0.5	0.3
walls	0.5	0.3	0.5	0.3	0.3	0.5	0.3	0.5	0.3	0.3
working plane	0.2	0.2	0.2	0.2	0.2	0.2	0.2	0.2	0.2	0.2
Room dimensions	Viewed crosswise					Viewed endwise				
<b>x = 2H y = 2H</b>	<b>21.1</b>	<b>22.6</b>	<b>21.4</b>	<b>22.9</b>	<b>23.1</b>	<b>21.2</b>	<b>22.7</b>	<b>21.6</b>	<b>23.0</b>	<b>23.3</b>
3H	22.7	24.0	23.0	24.3	24.6	22.8	24.2	23.2	24.5	24.8
4H	23.2	24.6	23.6	24.9	25.2	23.4	24.7	23.8	25.0	25.4
6H	23.6	24.9	24.0	25.2	25.5	23.8	25.1	24.2	25.4	25.7
8H	23.7	24.9	24.1	25.3	25.6	23.9	25.1	24.3	25.5	25.8
12H	23.8	24.9	24.2	25.3	25.6	24.0	25.1	24.4	25.5	25.8
<b>4H 2H</b>	<b>21.7</b>	<b>23.1</b>	<b>22.1</b>	<b>23.4</b>	<b>23.7</b>	<b>21.8</b>	<b>23.2</b>	<b>22.2</b>	<b>23.5</b>	<b>23.8</b>
3H	23.5	24.6	23.8	24.9	25.3	23.6	24.7	24.0	25.1	25.4
4H	24.2	25.2	24.6	25.6	26.0	24.3	25.3	24.7	25.7	26.1
6H	24.7	25.6	25.1	26.0	26.4	24.8	25.7	25.3	26.1	26.6
8H	24.8	25.7	25.3	26.1	26.5	25.0	25.8	25.4	26.3	26.7
12H	24.9	25.7	25.3	26.1	26.6	25.1	25.8	25.5	26.3	26.8
<b>8H 4H</b>	<b>24.4</b>	<b>25.3</b>	<b>24.9</b>	<b>25.7</b>	<b>26.1</b>	<b>24.5</b>	<b>25.4</b>	<b>25.0</b>	<b>25.8</b>	<b>26.3</b>
6H	25.0	25.8	25.5	26.2	26.7	25.2	25.9	25.7	26.3	26.8
8H	25.3	25.9	25.8	26.4	26.9	25.4	26.0	25.9	26.5	27.0
12H	25.4	25.9	25.9	26.4	27.0	25.5	26.1	26.1	26.6	27.1
<b>12H 4H</b>	<b>24.4</b>	<b>25.2</b>	<b>24.9</b>	<b>25.6</b>	<b>26.1</b>	<b>24.5</b>	<b>25.3</b>	<b>25.0</b>	<b>25.8</b>	<b>26.2</b>
6H	25.1	25.7	25.6	26.2	26.7	25.2	25.9	25.7	26.3	26.8
8H	25.3	25.9	25.9	26.4	26.9	25.5	26.0	26.0	26.5	27.1
<b>Variations with the observer position at spacings(CIE Pub.117):</b>										
<b>S = 1.0H</b>	<b>+ 0.1 / - 0.2</b>					<b>+ 0.1 / - 0.2</b>				
<b>1.5H</b>	<b>+ 0.2 / - 0.3</b>					<b>+ 0.2 / - 0.3</b>				
<b>2.0H</b>	<b>+ 0.2 / - 0.3</b>					<b>+ 0.2 / - 0.3</b>				

CIE Pub.117, 1839 lm Total Lamp Luminous Flux Corrected (8log(F/F0) = 2.1)  
 Area: 0.05 m2

C Range: 0 - 360DEG  
 C Interval: 30.0DEG  
 Test Speed: HIGH  
 Temperature:25.3DEG  
 Operators:DAMIN  
 Test Date:2020-12-15

γ Range: 0 - 180DEG  
 γ Interval: 1.0DEG  
 Test System:EVERFINE GO-2000A\_V1 SYSTEM V2.00.443  
 Humidity:65.0%  
 Test Distance:8.000m [K=0.7063]  
 Remarks:

**UTILIZATION FACTORS TABLE**

Test:U:24.000V I:0.7620A P:18.300W PF:1.0000 Freq:0Hz		
Lamp Flux:1838.8lx1 lm		
NAME: FLS100W-NW	TYPE: LED	
MFR.:	DIM.: 1m	

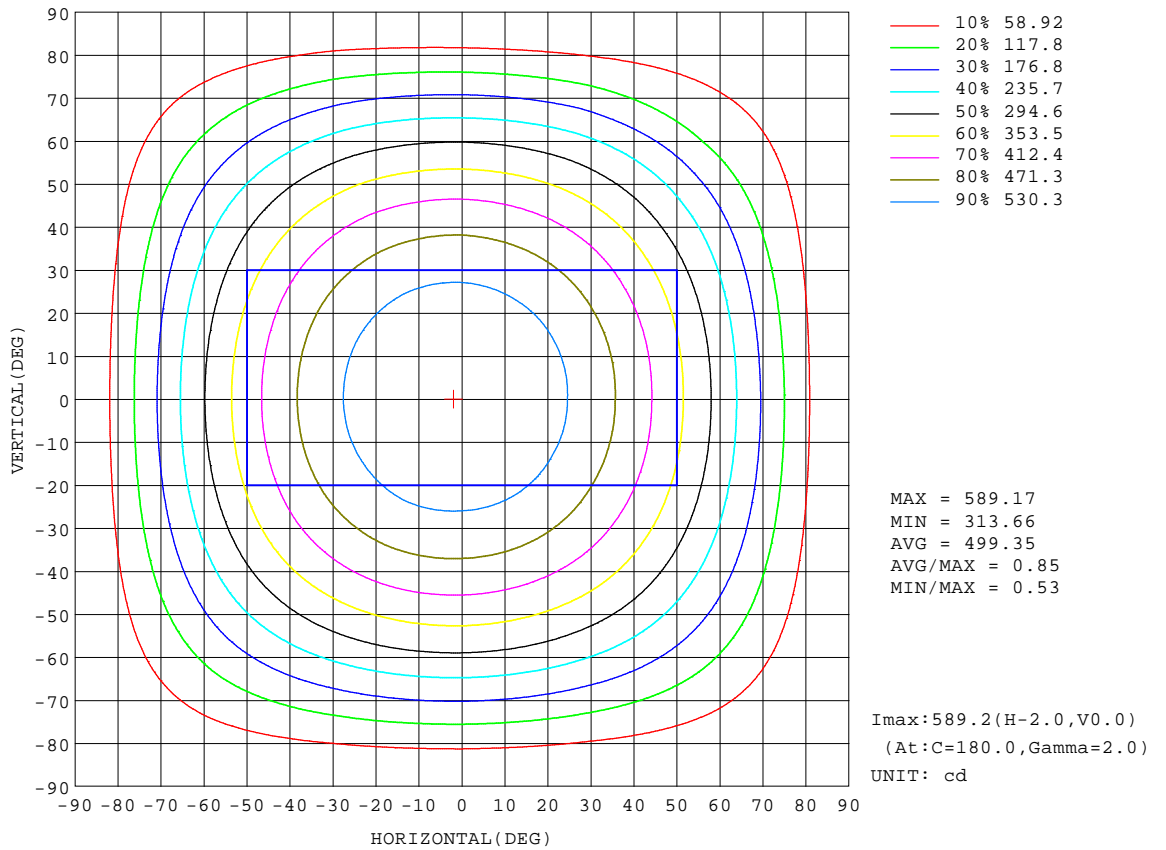
REFLECTANCE										
Ceiling	0.8	0.8	0.8	0.7	0.7	0.7	0.5	0.5	0.5	0
Walls	0.7	0.5	0.3	0.7	0.5	0.3	0.7	0.5	0.3	0
Working plane	0.2	0.2	0.2	0.2	0.2	0.2	0.2	0.2	0.2	0
<b>ROOM INDEX</b>	<b>UTILIZATION FACTORS(PERCENT) <math>k(RI) \times RCR = 5</math></b>									
<b>k = 0.60</b>	56	44	37	55	44	37	54	43	37	30
<b>0.80</b>	66	54	46	65	53	46	63	53	46	39
<b>1.00</b>	74	63	55	73	62	55	70	63	54	47
<b>1.25</b>	81	71	63	80	70	63	77	68	62	54
<b>1.50</b>	87	76	69	85	75	69	81	73	67	59
<b>2.00</b>	94	85	78	91	83	77	88	81	75	67
<b>2.50</b>	98	90	83	95	88	82	91	85	80	71
<b>3.00</b>	101	94	88	99	92	87	94	89	84	75
<b>4.00</b>	105	99	94	103	97	93	98	93	90	80
<b>5.00</b>	108	103	98	105	100	97	100	96	93	83
<b>ROOM INDEX</b>	<b>UF(total)</b>									<b>Direct</b>
<b>According to DIN EN 13032-2 2004</b>			<b>Suspended</b>					<b>SHRNOM = 1.25</b>		

**C Range: 0 - 360DEG**  
**C Interval: 30.0DEG**  
**Test Speed: HIGH**  
**Temperature:25.3DEG**  
**Operators:DAMIN**  
**Test Date:2020-12-15**

**$\gamma$  Range: 0 - 180DEG**  
 **$\gamma$  Interval: 1.0DEG**  
**Test System:EVERFINE GO-2000A\_V1 SYSTEM V2.00.443**  
**Humidity:65.0%**  
**Test Distance:8.000m [K=0.7063]**  
**Remarks:**

**ISOCANDELA DIAGRAM**

Test:U:24.000V I:0.7620A P:18.300W PF:1.0000 Freq:0Hz		
Lamp Flux:1838.8lx1 lm		
NAME: FLS100W-NW	TYPE: LED	
MFR.:	DIM.: 1m	



**C Range: 0 - 360DEG**  
**C Interval: 30.0DEG**  
**Test Speed: HIGH**  
**Temperature:25.3DEG**  
**Operators:DAMIN**  
**Test Date:2020-12-15**

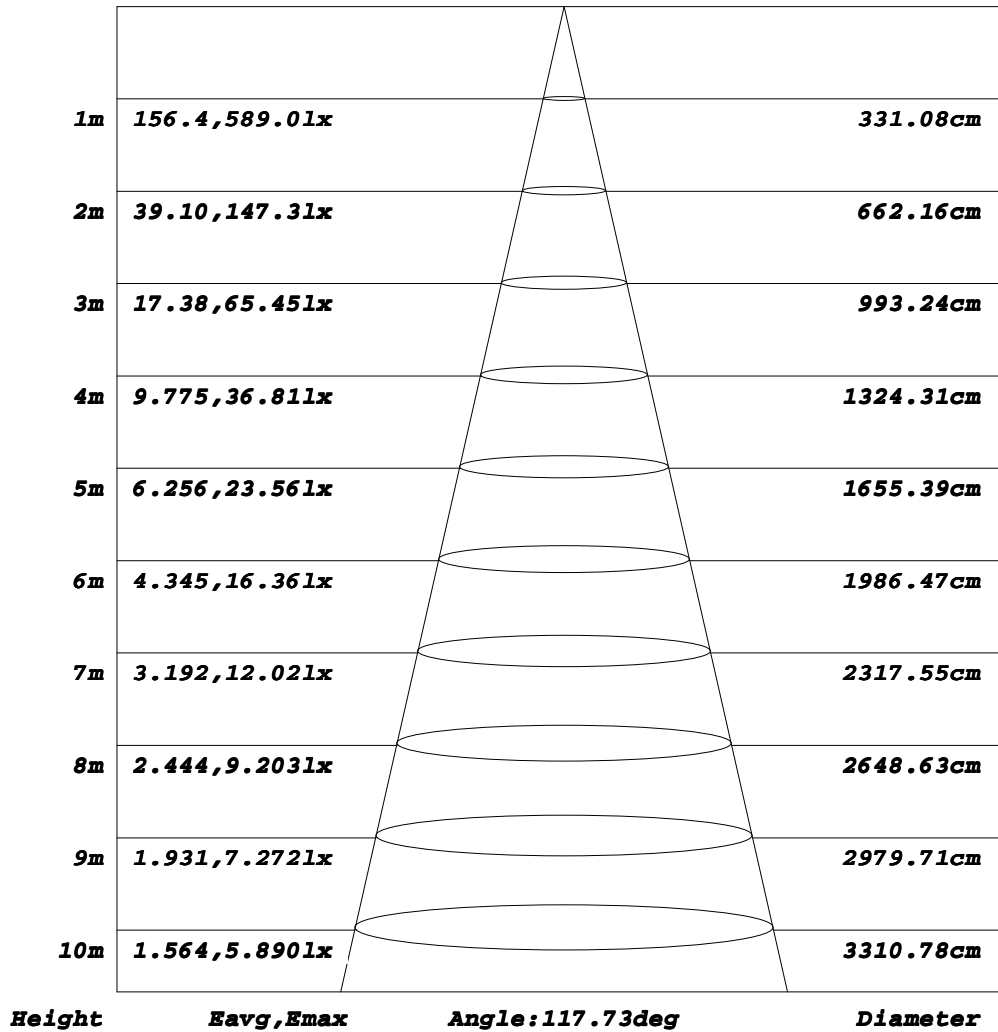
**γ Range: 0 - 180DEG**  
**γ Interval: 1.0DEG**  
**Test System:EVERFINE GO-2000A\_V1 SYSTEM V2.00.443**  
**Humidity:65.0%**  
**Test Distance:8.000m [K=0.7063]**  
**Remarks:**



**AAI Figure**

Test:U:24.000V I:0.7620A P:18.300W PF:1.0000 Freq:0Hz		
Lamp Flux:1838.8lx1 lm		
NAME: FLS100W-NW	TYPE: LED	
MFR.:	DIM.: 1m	

**Flux out:1361 lm**



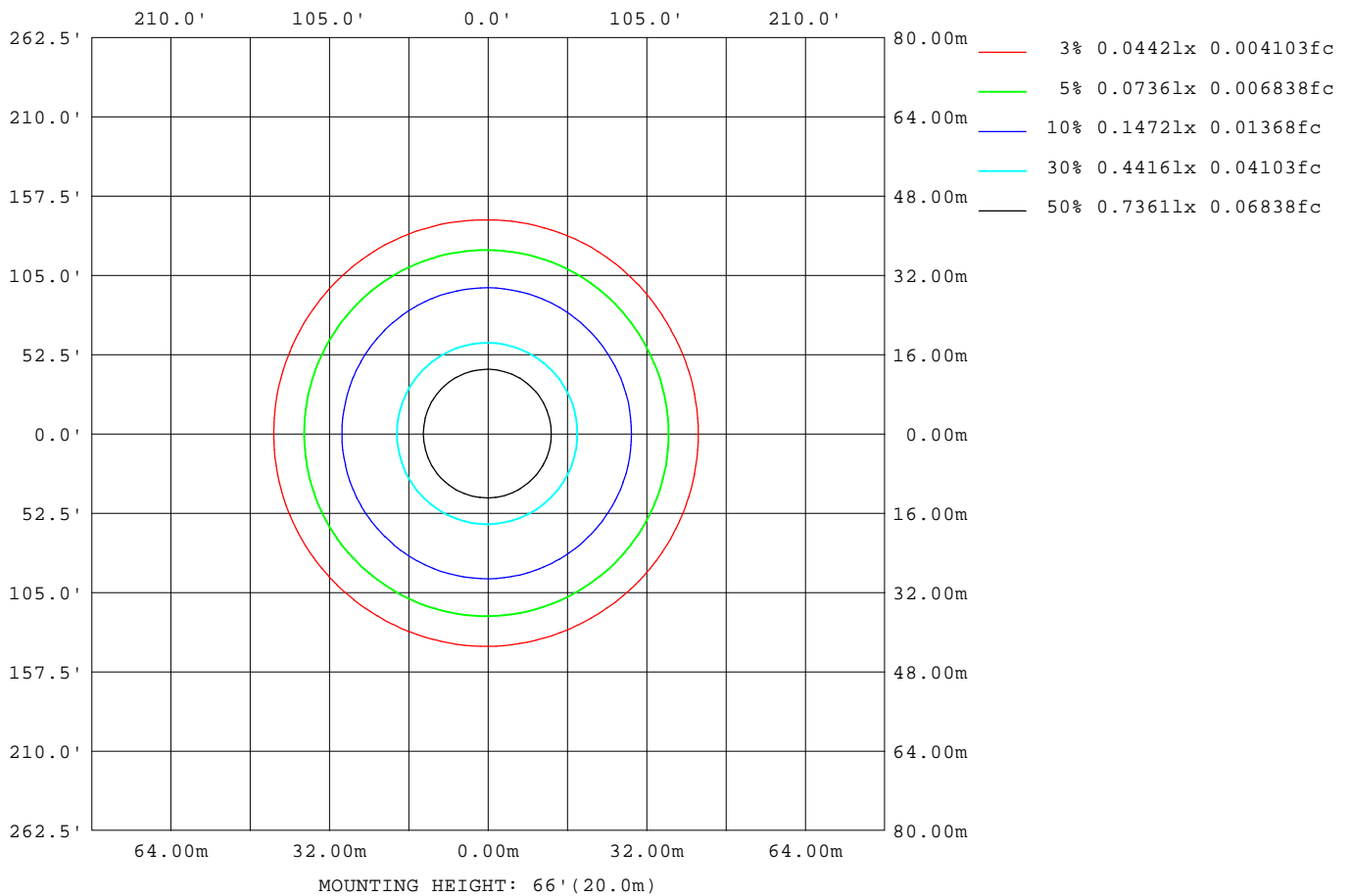
Note: The Curves indicate the illuminated area and the average illumination when the luminaire is at different distance.

**C Range: 0 - 360DEG**  
**C Interval: 30.0DEG**  
**Test Speed: HIGH**  
**Temperature: 25.3DEG**  
**Operators: DAMIN**  
**Test Date: 2020-12-15**

**γ Range: 0 - 180DEG**  
**γ Interval: 1.0DEG**  
**Test System: EVERFINE GO-2000A\_V1 SYSTEM V2.00.443**  
**Humidity: 65.0%**  
**Test Distance: 8.000m [K=0.7063]**  
**Remarks:**

**ISOLUX DIAGRAM**

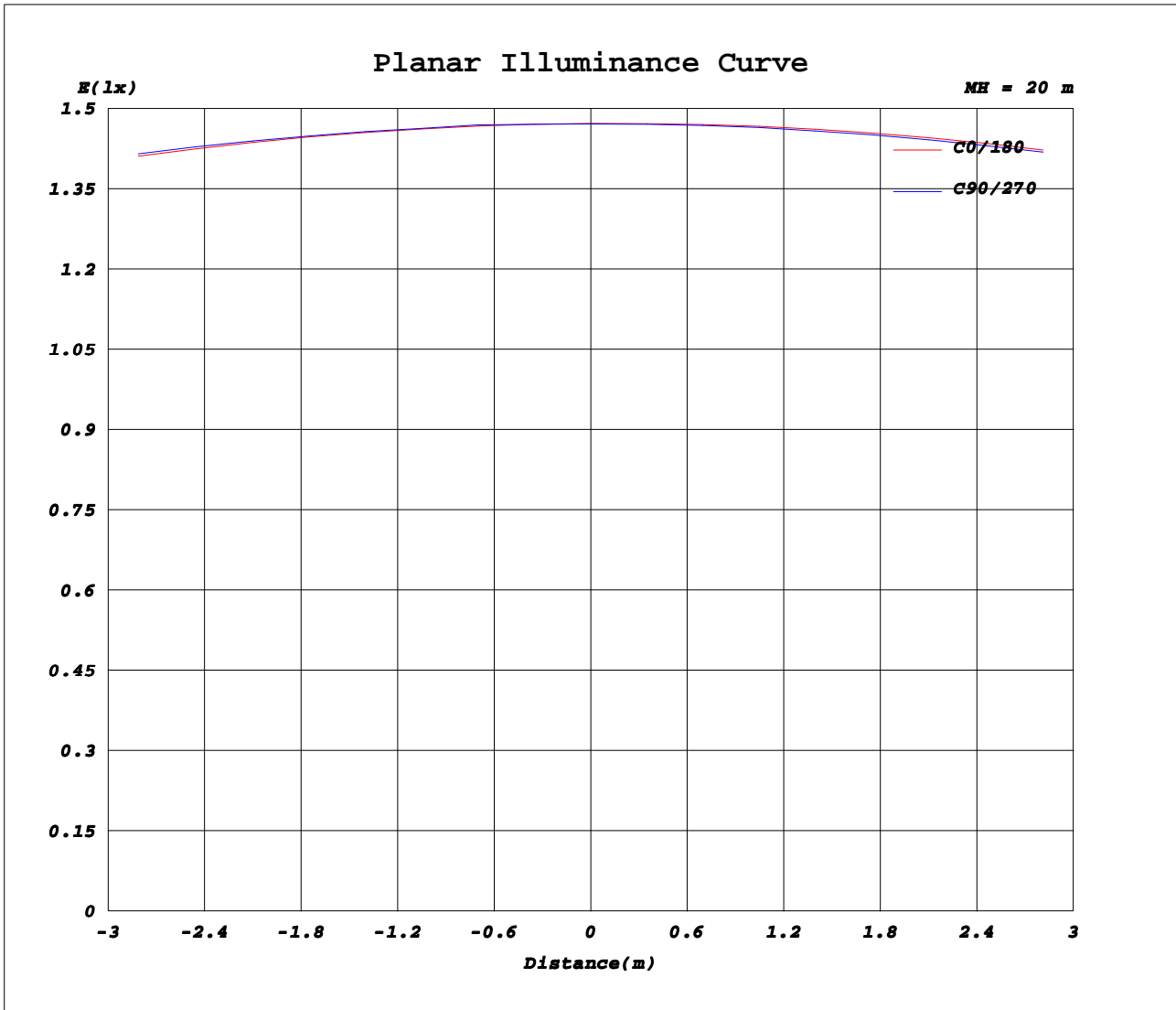
Test:U:24.000V I:0.7620A P:18.300W PF:1.0000 Freq:0Hz		
Lamp Flux:1838.81x1 lm		
NAME: FLS100W-NW	TYPE: LED	
MFR.:	DIM.: 1m	



**C Range: 0 - 360DEG**  
**C Interval: 30.0DEG**  
**Test Speed: HIGH**  
**Temperature: 25.3DEG**  
**Operators: DAMIN**  
**Test Date: 2020-12-15**

**γ Range: 0 - 180DEG**  
**γ Interval: 1.0DEG**  
**Test System: EVERFINE GO-2000A\_V1 SYSTEM V2.00.443**  
**Humidity: 65.0%**  
**Test Distance: 8.000m [K=0.7063]**  
**Remarks:**

**Planar Illuminance Curve**



**C Range: 0 - 360DEG**  
**C Interval: 30.0DEG**  
**Test Speed: HIGH**  
**Temperature: 25.3DEG**  
**Operators: DAMIN**  
**Test Date: 2020-12-15**

**γ Range: 0 - 180DEG**  
**γ Interval: 1.0DEG**  
**Test System: EVERFINE GO-2000A\_V1 SYSTEM V2.00.443**  
**Humidity: 65.0%**  
**Test Distance: 8.000m [K=0.7063]**  
**Remarks:**

**LUMINOUS DISTRIBUTION INTENSITY DATA**

Test:U:24.000V I:0.7620A P:18.300W PF:1.0000 Freq:0Hz		
Lamp Flux:1838.81x1 lm		
NAME: FLS100W-NW	TYPE: LED	
MFR.:	DIM.: 1m	

Table--1

UNIT: cd

C (DEG) \ γ (DEG)	0	30	60	90	120	150	180	210	240	270	300	330							
0	589	589	589	589	589	589	589	589	589	589	589	589							
5	585	585	586	586	587	588	588	588	588	587	587	586							
10	578	578	578	580	581	583	583	583	583	582	580	578							
15	565	566	567	570	571	573	574	574	574	572	570	567							
20	549	550	552	555	557	560	560	561	561	558	555	551							
25	528	528	532	535	538	542	543	543	543	540	535	531							
30	504	504	508	511	515	518	518	520	520	517	512	507							
35	475	476	480	484	488	491	491	494	493	491	484	479							
40	443	444	447	452	456	459	460	463	463	459	453	446							
45	406	407	411	417	420	424	425	426	427	424	417	410							
50	366	367	371	376	381	384	386	387	388	384	378	370							
55	322	323	327	332	336	340	340	342	344	340	334	326							
60	275	276	279	285	288	292	292	294	296	292	286	275							
65	224	226	228	233	236	240	241	243	245	240	236	225							
70	171	173	174	180	181	186	187	188	190	186	179	155							
75	118	119	120	124	125	130	131	132	134	130	120	103							
80	66.5	68.9	67.3	71.8	71.5	77.3	77.6	77.7	79.8	75.8	70.6	65.9							
85	25.6	26.5	25.9	27.7	28.1	31.5	32.3	32.2	34.1	30.3	25.9	25.8							
90	4.54	4.84	4.68	4.12	4.87	5.85	6.61	6.90	7.35	5.23	6.70	6.31							
95	4.54	4.65	4.47	4.40	4.40	4.77	5.32	5.52	5.50	5.57	5.54	6.12							
100	4.96	4.98	5.09	4.99	4.97	5.14	5.73	5.81	5.96	6.09	6.01	6.38							
105	5.63	5.65	5.72	5.66	5.60	5.71	6.23	6.37	6.54	6.63	6.54	6.95							
110	6.32	6.33	6.35	6.32	6.26	6.29	6.82	6.96	7.13	7.19	7.09	7.47							
115	6.99	7.00	7.01	6.97	6.94	6.98	7.39	7.57	7.73	7.73	7.68	7.98							
120	7.67	7.65	7.65	7.62	7.63	7.68	8.02	8.20	8.34	8.29	8.25	8.50							
125	8.37	8.30	8.26	8.25	8.32	8.35	8.61	8.82	8.93	8.86	8.81	9.04							
130	9.07	8.95	8.91	8.91	9.01	9.03	9.20	9.45	9.55	9.43	9.36	9.62							
135	9.70	9.58	9.54	9.57	9.68	9.70	9.78	10.0	10.1	10.0	9.90	10.2							
140	10.3	10.2	10.2	10.2	10.3	10.4	10.3	10.6	10.7	10.6	10.5	10.7							
145	10.8	10.8	10.8	10.9	11.0	11.0	10.8	11.1	11.2	11.2	11.1	11.3							
150	11.4	11.4	11.4	11.5	11.6	11.6	11.4	11.6	11.8	11.8	11.6	11.8							
155	12.1	12.0	12.1	12.1	12.2	12.2	11.9	12.1	12.3	12.3	12.2	12.3							
160	12.6	12.5	12.7	12.7	12.8	12.8	12.5	12.6	12.8	12.9	12.8	12.8							
165	13.1	13.1	13.2	13.3	13.3	13.3	13.0	13.1	13.3	13.4	13.3	13.3							
170	13.6	13.5	13.7	13.7	13.7	13.7	13.4	13.4	13.7	13.8	13.7	13.7							
175	13.9	13.9	14.0	14.1	14.1	14.0	13.8	13.8	14.0	14.1	14.1	14.0							
180	14.1	14.1	14.2	14.3	14.2	14.2	14.0	14.0	14.2	14.3	14.3	14.3							

**C Range: 0 - 360DEG**  
**C Interval: 30.0DEG**  
**Test Speed: HIGH**  
**Temperature: 25.3DEG**  
**Operators: DAMIN**  
**Test Date: 2020-12-15**

**γ Range: 0 - 180DEG**  
**γ Interval: 1.0DEG**  
**Test System: EVERFINE GO-2000A\_V1 SYSTEM V2.00.443**  
**Humidity: 65.0%**  
**Test Distance: 8.000m [K=0.7063]**  
**Remarks:**