

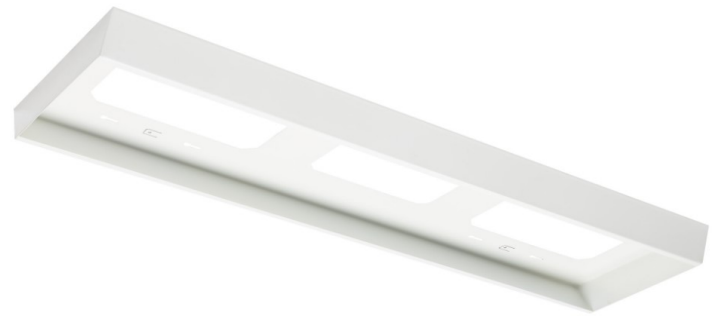
EASY INSTALL SURFACE MOUNT KIT



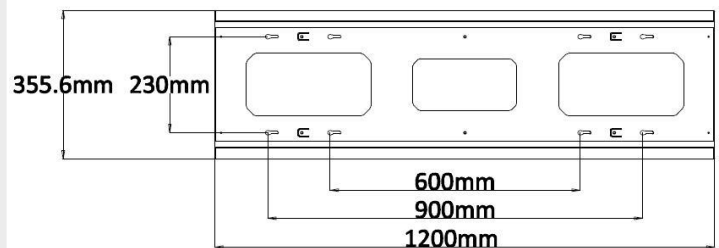
The POWER-LITE® easy install surface mount kit is a fully welded frame which requires no assembly on site, and is simply installed to the ceiling ready to receive the LED panel.

Applications:

Used to surface mount LED light panels to concrete slab or plaster ceiling.



LPSM-120/30-A



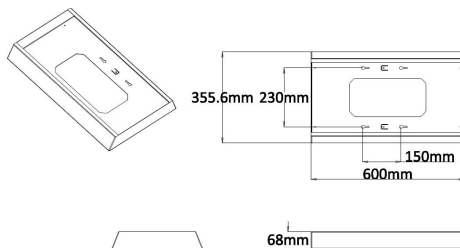
Specifications

Mount Type:	Surface Mount
Material:	Aluminium
Warranty:	5 Years
Carton Quantity:	2
Colour:	White

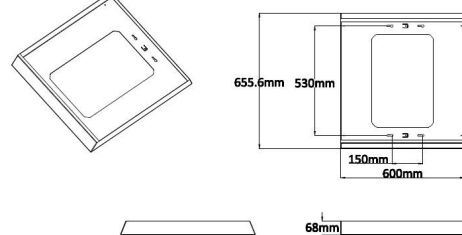
Please note that these items are only compatible with the CLP and LPE series



LPSM-30/60-A



LPSM-60SQ-A



Code	To Fit LED Panel Size	Overall Frame Coverage	Frame Depth
LPSM-30/60-A	300mm x 600mm	600mm x 355.6mm	68mm
LPSM-60SQ-A	600mm x 600mm	600mm x 655.6mm	68mm
LPSM-120/30-A	1200mm x 300mm	1200 x 355.6mm	68mm