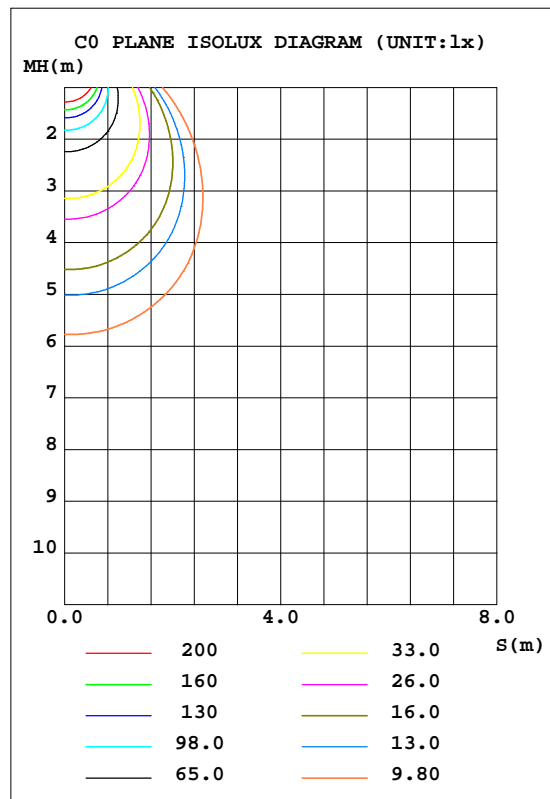
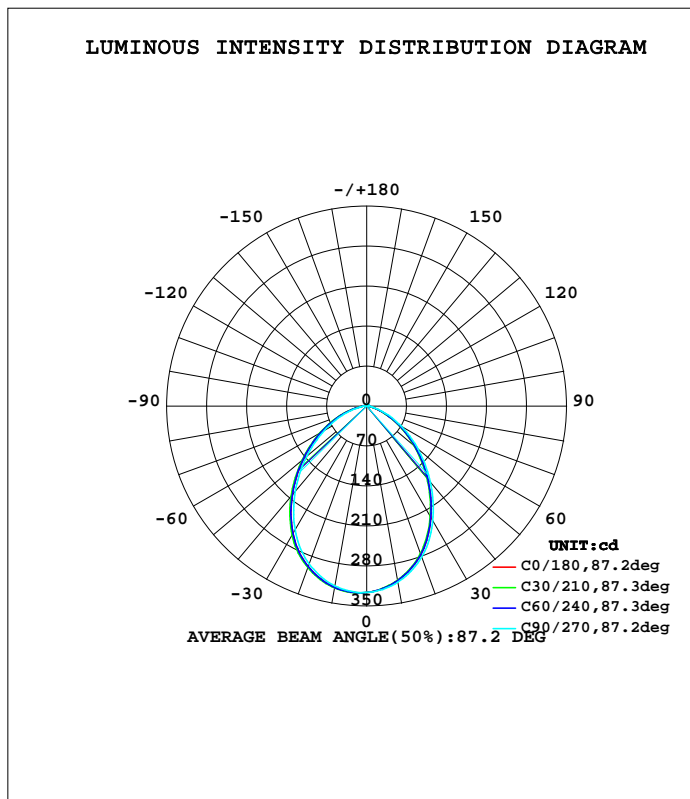


LUMINAIRE PHOTOMETRIC TEST REPORT

Test:U:230.8V I:0.0500A P:10.20W PF:0.8780 Lamp Flux:685.315x1 lm		
NAME: LED-DL10W-CW-W	TYPE:10	WEIGHT:
DIM.:	SPEC.:5000K	SERIAL No.:
MFR.:	SUR.:0.05*0.05	PROTECTION ANGLE:

DATA OF LAMP		PHOTOMETRIC DATA Eff: 67.19 lm/W			
MODEL	LED-DL10W-CW-W	I _{max} (cd)	327.6	S/MH(C0/180)	1.18
NOMINAL POWER(W)	10	LOR(%)	100.0	S/MH(C90/270)	1.15
RATED VOLTAGE(V)	230	TOTAL FLUX(lm)	685.32	η UP, DN(C0-180)	1.1, 51.2
NOMINAL FLUX(lm)	685.315	CIE CLASS	DIRECT	η UP, DN(C180-360)	1.2, 46.6
LAMPS INSIDE	1	η up(%)	2.2	CIBSE SHR NOM	1.25
TEST VOLTAGE(V)	230.8	η down(%)	97.8	CIBSE SHR MAX	1.25



C Range: 0 - 360DEG
 C Interval: 15.0DEG
 Test Speed: HIGH
 Temperature:25.3DEG
 Operators:DAMIN
 Test Date:2013-11-21

γ Range: 0 - 180DEG
 γ Interval: 1.0DEG
 Test System:EVERFINE GO-2000A_V1 SYSTEM V2.0.276
 Humidity:65.0%
 Test Distance:9.480m [K=1.0000]
 Remarks:

ZONAL FLUX DIAGRAM

ZONAL FLUX DIAGRAM:

γ	C0	C45	C90	C135	C180	C225	C270	C315	γ	Φ zone	Φ total	\$lum,lamp
10	322.2	323.1	319.7	314.4	310.4	309.6	313.0	318.1	0- 10	30.67	30.67	4.48,4.48
20	299.2	300.9	294.4	284.3	276.7	275.2	281.5	291.4	10- 20	85.63	116.3	17,17
30	258.2	260.7	250.8	236.1	225.2	222.6	231.7	246.5	20- 30	122.5	238.8	34.9,34.9
40	202.7	205.6	194.5	178.2	166.4	164.2	173.7	189.5	30- 40	133.3	372.1	54.3,54.3
50	144.6	147.9	137.2	121.5	110.8	109.0	117.7	132.3	40- 50	119.9	492.0	71.8,71.8
60	92.09	94.94	85.47	71.71	62.76	61.77	69.37	81.58	50- 60	90.94	583.0	85.1,85.1
70	48.50	50.31	42.41	32.09	26.01	25.47	31.43	40.52	60- 70	55.64	638.6	93.2,93.2
80	17.24	17.82	13.36	9.408	7.772	7.602	9.717	13.45	70- 80	24.17	662.8	96.7,96.7
90	4.216	4.462	2.734	2.201	2.230	2.243	2.552	2.934	80- 90	7.131	669.9	97.8,97.8
100	1.845	1.805	1.790	1.846	2.191	2.203	2.202	2.195	90-100	2.329	672.2	98.1,98.1
110	1.943	1.934	1.900	2.009	2.275	2.231	2.249	2.223	100-110	2.166	674.4	98.4,98.4
120	2.084	2.125	2.136	2.223	2.450	2.434	2.418	2.318	110-120	2.161	676.6	98.7,98.7
130	2.331	2.367	2.350	2.476	2.702	2.675	2.648	2.577	120-130	2.143	678.7	99,99
140	2.607	2.631	2.614	2.735	2.966	2.923	2.907	2.797	130-140	2.045	680.7	99.3,99.3
150	2.865	2.900	2.878	3.005	3.197	3.142	3.132	3.066	140-150	1.818	682.6	99.6,99.6
160	3.146	3.182	3.154	3.264	3.399	3.372	3.357	3.264	150-160	1.454	684.0	99.8,99.8
170	3.404	3.451	3.418	3.495	3.562	3.507	3.531	3.505	160-170	0.9561	685.0	100,100
180	3.607	3.609	3.581	3.585	3.595	3.586	3.587	3.601	170-180	0.3374	685.3	100,100
DEG	LUMINOUS INTENSITY:cd									UNIT:lm		

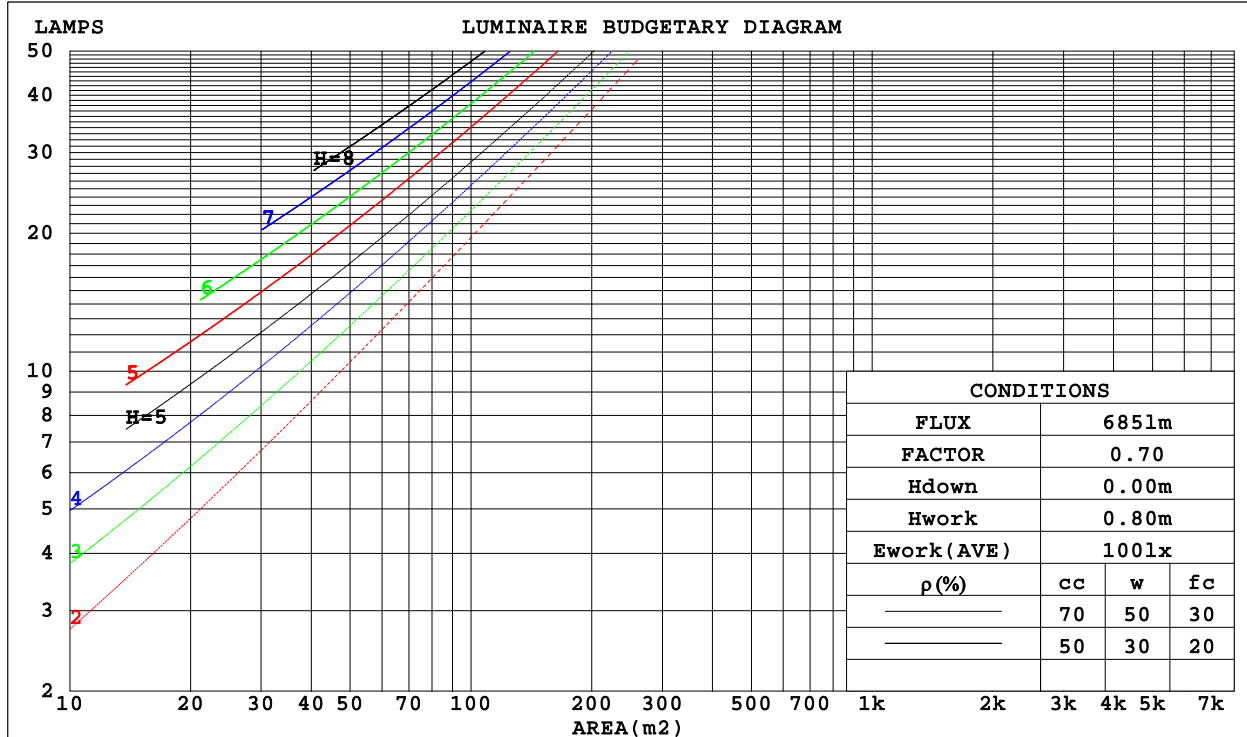
C Range: 0 - 360DEG
 C Interval: 15.0DEG
 Test Speed: HIGH
 Temperature:25.3DEG
 Operators:DAMIN
 Test Date:2013-11-21

γ Range: 0 - 180DEG
 γ Interval: 1.0DEG
 Test System:EVERFINE GO-2000A_V1 SYSTEM V2.0.276
 Humidity:65.0%
 Test Distance:9.480m [K=1.0000]
 Remarks:

CU AND LUMINAIRE BUDGETARY ESTIMATE DIAGRAM

Test:U:230.8V I:0.0500A P:10.20W PF:0.8780 Lamp Flux:685.315x1 lm		
NAME: LED-DL10W-CW-W	TYPE:10	WEIGHT:
DIM.:	SPEC.:5000K	SERIAL No.:
MFR.:	SUR.:0.05*0.05	PROTECTION ANGLE:

ρ_{cc}	80%			70%			50%			30%			10%			0
ρ_w	50%	30%	10%	50%	30%	10%	50%	30%	10%	50%	30%	10%	50%	30%	10%	0
ρ_{fc}	20%			20%			20%			20%			20%			0
RCR	RCR:Room Cavity Ratio						Coefficients of Utilization(CU)									
0.0	1.19	1.19	1.19	1.15	1.15	1.15	1.10	1.10	1.10	1.05	1.05	1.05	.00	.00	.00	.98
1.0	1.06	1.02	.99	1.03	.00	.97	.99	.96	.93	.94	.92	.90	.90	.89	.87	.85
2.0	.94	.88	.83	.92	.86	.82	.88	.83	.79	.84	.81	.77	.81	.78	.75	.73
3.0	.84	.76	.71	.82	.75	.70	.79	.73	.68	.76	.71	.67	.73	.69	.65	.63
4.0	.75	.67	.61	.74	.66	.60	.71	.64	.59	.68	.63	.58	.66	.61	.57	.55
5.0	.68	.60	.53	.67	.59	.53	.64	.57	.52	.62	.56	.52	.60	.55	.51	.49
6.0	.62	.53	.47	.60	.53	.47	.59	.52	.46	.57	.51	.46	.55	.50	.45	.43
7.0	.56	.48	.42	.55	.48	.42	.54	.47	.42	.52	.46	.41	.51	.45	.41	.39
8.0	.52	.44	.38	.51	.43	.38	.49	.43	.38	.48	.42	.37	.47	.41	.37	.35
9.0	.48	.40	.35	.47	.40	.35	.46	.39	.34	.44	.38	.34	.43	.38	.34	.32
10.0	.44	.37	.32	.44	.36	.32	.42	.36	.31	.41	.35	.31	.40	.35	.31	.29



C Range: 0 - 360DEG
 C Interval: 15.0DEG
 Test Speed: HIGH
 Temperature:25.3DEG
 Operators:DAMIN
 Test Date:2013-11-21

γ Range: 0 - 180DEG
 γ Interval: 1.0DEG
 Test System:EVERFINE GO-2000A_V1 SYSTEM V2.0.276
 Humidity:65.0%
 Test Distance:9.480m [K=1.0000]
 Remarks:

WEC AND CCEC

Test:U:230.8V I:0.0500A P:10.20W PF:0.8780 Lamp Flux:685.315x1 lm		
NAME: LED-DL10W-CW-W	TYPE:10	WEIGHT:
DIM.:	SPEC.:5000K	SERIAL No.:
MFR.:	SUR.:0.05*0.05	PROTECTION ANGLE:

pcc	80%			70%			50%			30%			10%			0
pw	50%	30%	10%	50%	30%	10%	50%	30%	10%	50%	30%	10%	50%	30%	10%	0
pfc	20%			20%			20%			20%			20%			0
RCR	RCR:Room Cavity Ratio						Wall Exitance Coefficients(WEC)									
0.0																
1.0	.266	.152	.048	.259	.148	.047	.245	.140	.045	.231	.133	.043	.219	.127	.041	
2.0	.255	.140	.043	.248	.137	.042	.236	.131	.041	.224	.126	.039	.213	.121	.038	
3.0	.239	.127	.038	.233	.125	.038	.222	.120	.037	.212	.116	.036	.203	.112	.035	
4.0	.224	.116	.034	.218	.114	.034	.209	.111	.033	.199	.107	.032	.191	.104	.032	
5.0	.209	.107	.031	.204	.105	.031	.196	.102	.030	.187	.099	.029	.180	.096	.029	
6.0	.196	.098	.028	.191	.097	.028	.184	.094	.027	.176	.092	.027	.169	.089	.026	
7.0	.183	.091	.026	.180	.090	.026	.173	.087	.025	.166	.085	.025	.160	.083	.024	
8.0	.173	.084	.024	.169	.083	.024	.163	.081	.023	.157	.079	.023	.151	.078	.023	
9.0	.163	.079	.022	.160	.078	.022	.154	.076	.022	.148	.074	.021	.143	.073	.021	
10.0	.154	.074	.020	.151	.073	.020	.146	.071	.020	.141	.070	.020	.136	.068	.020	

pcc	80%			70%			50%			30%			10%			0
pw	50%	30%	10%	50%	30%	10%	50%	30%	10%	50%	30%	10%	50%	30%	10%	0
pfc	20%			20%			20%			20%			20%			0
RCR	RCR:Room Cavity Ratio						Ceiling Cavity Exitance Coefficients(CCEC)									
0.0	.208	.208	.208	.177	.177	.177	.121	.121	.121	.070	.070	.070	.022	.022	.022	
1.0	.195	.174	.155	.166	.149	.133	.114	.103	.092	.066	.059	.054	.021	.019	.017	
2.0	.185	.149	.120	.158	.129	.104	.108	.089	.072	.063	.052	.042	.020	.017	.014	
3.0	.176	.132	.096	.151	.114	.083	.104	.079	.058	.060	.046	.034	.019	.015	.011	
4.0	.168	.118	.080	.144	.102	.069	.099	.071	.049	.057	.042	.029	.018	.014	.009	
5.0	.161	.107	.068	.138	.093	.059	.095	.065	.042	.055	.038	.025	.018	.012	.008	
6.0	.154	.099	.059	.132	.086	.052	.091	.060	.037	.053	.035	.022	.017	.012	.007	
7.0	.147	.092	.053	.127	.080	.046	.088	.056	.033	.051	.033	.019	.016	.011	.006	
8.0	.141	.086	.048	.122	.075	.042	.084	.052	.030	.049	.031	.018	.016	.010	.006	
9.0	.136	.081	.044	.117	.070	.039	.081	.049	.027	.047	.029	.016	.015	.010	.005	
10.0	.130	.077	.041	.112	.067	.036	.078	.047	.026	.045	.028	.015	.015	.009	.005	

C Range: 0 - 360DEG
 C Interval: 15.0DEG
 Test Speed: HIGH
 Temperature:25.3DEG
 Operators:DAMIN
 Test Date:2013-11-21

γ Range: 0 - 180DEG
 γ Interval: 1.0DEG
 Test System:EVERFINE GO-2000A_V1 SYSTEM V2.0.276
 Humidity:65.0%
 Test Distance:9.480m [K=1.0000]
 Remarks:

Uncorrected UGR Table

Test:U:230.8V I:0.0500A P:10.20W PF:0.8780 Lamp Flux:685.315x1 lm										
NAME: LED-DL10W-CW-W					TYPE:10			WEIGHT:		
DIM.:					SPEC.:5000K			SERIAL No.:		
MFR.:					SUR.:0.05*0.05			PROTECTION ANGLE:		
ceiling/cavity	0.7	0.7	0.5	0.5	0.3	0.7	0.7	0.5	0.5	0.3
walls	0.5	0.3	0.5	0.3	0.3	0.5	0.3	0.5	0.3	0.3
working plane	0.2	0.2	0.2	0.2	0.2	0.2	0.2	0.2	0.2	0.2
Room dimensions	Viewed crosswise					Viewed endwise				
x = 2H y = 2H	28.2	29.5	28.5	29.7	30.0	27.9	29.3	28.2	29.5	29.7
3H	29.2	30.4	29.5	30.7	30.9	28.8	30.0	29.1	30.3	30.6
4H	29.5	30.7	29.9	31.0	31.3	29.1	30.2	29.4	30.5	30.8
6H	29.7	30.8	30.1	31.1	31.4	29.2	30.3	29.6	30.6	30.9
8H	29.8	30.8	30.1	31.1	31.5	29.2	30.3	29.6	30.6	30.9
12H	29.8	30.8	30.2	31.2	31.5	29.2	30.3	29.6	30.6	30.9
4H 2H	28.6	29.8	28.9	30.1	30.3	28.4	29.6	28.7	29.8	30.1
3H	29.8	30.8	30.2	31.1	31.5	29.5	30.5	29.8	30.8	31.2
4H	30.2	31.2	30.6	31.5	31.9	29.8	30.8	30.2	31.1	31.5
6H	30.5	31.4	31.0	31.7	32.2	30.1	30.9	30.5	31.3	31.7
8H	30.6	31.4	31.1	31.8	32.2	30.1	30.9	30.6	31.3	31.7
12H	30.7	31.4	31.2	31.8	32.3	30.2	30.9	30.6	31.3	31.7
8H 4H	30.4	31.1	30.8	31.5	32.0	30.0	30.8	30.4	31.2	31.6
6H	30.8	31.4	31.3	31.8	32.3	30.3	31.0	30.8	31.4	31.9
8H	30.9	31.5	31.4	32.0	32.5	30.5	31.0	30.9	31.5	32.0
12H	31.1	31.6	31.6	32.1	32.6	30.6	31.1	31.1	31.5	32.1
12H 4H	30.3	31.0	30.8	31.5	31.9	30.0	30.7	30.4	31.1	31.6
6H	30.8	31.3	31.3	31.8	32.3	30.4	30.9	30.8	31.4	31.9
8H	31.0	31.5	31.5	31.9	32.5	30.5	31.0	31.0	31.5	32.0
Variations with the observer position at spacings:										
S = 1.0H	+ 0.3 / - 0.4					+ 0.3 / - 0.4				
1.5H	+ 0.1 / - 0.3					+ 0.2 / - 0.4				
2.0H	+ 0.4 / - 0.5					+ 0.4 / - 0.7				

CIE Pub.117 Corrected 685.3 lm Total Lamp Luminous Flux.(8log(F/F0) = -1.3)

C Range: 0 - 360DEG
 C Interval: 15.0DEG
 Test Speed: HIGH
 Temperature:25.3DEG
 Operators:DAMIN
 Test Date:2013-11-21

γ Range: 0 - 180DEG
 γ Interval: 1.0DEG
 Test System:EVERFINE GO-2000A_V1 SYSTEM V2.0.276
 Humidity:65.0%
 Test Distance:9.480m [K=1.0000]
 Remarks:

UTILIZATION FACTORS TABLE

Test:U:230.8V I:0.0500A P:10.20W PF:0.8780 Lamp Flux:685.315x1 lm		
NAME: LED-DL10W-CW-W	TYPE:10	WEIGHT:
DIM.:	SPEC.:5000K	SERIAL No.:
MFR.:	SUR.:0.05*0.05	PROTECTION ANGLE:

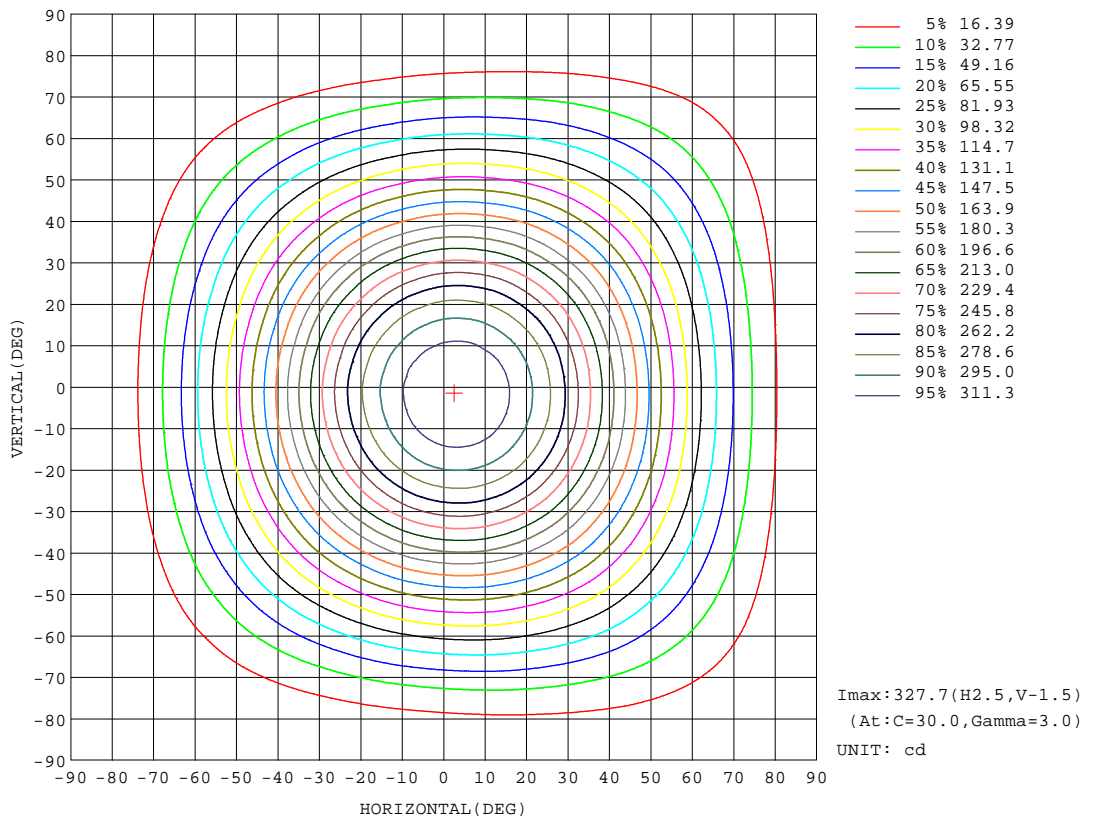
REFLECTANCE										
Ceiling	0.8	0.8	0.8	0.7	0.7	0.7	0.5	0.5	0.5	0
Walls	0.7	0.5	0.3	0.7	0.5	0.3	0.7	0.5	0.3	0
Working plane	0.2	0.2	0.2	0.2	0.2	0.2	0.2	0.2	0.2	0
ROOM INDEX	UTILIZATION FACTORS(PERCENT) k(RI) x RCR = 5									
k = 0.60	63	52	46	62	52	46	61	52	46	40
0.80	73	63	56	72	62	56	70	61	55	49
1.00	81	71	65	80	71	64	77	71	64	57
1.25	88	78	72	86	78	72	83	76	71	64
1.50	92	84	78	90	83	77	87	81	76	69
2.00	98	91	85	96	89	84	93	87	83	75
2.50	101	95	90	99	93	88	95	90	86	78
3.00	104	98	94	102	97	92	98	94	90	82
4.00	108	103	99	105	101	97	101	97	94	85
5.00	110	106	102	107	104	100	102	100	97	88
ROOM INDEX	UF(total)									Direct
According to DIN EN 13032-2 2004			Suspended				SHRNOM = 1.25			

C Range: 0 - 360DEG
 C Interval: 15.0DEG
 Test Speed: HIGH
 Temperature:25.3DEG
 Operators:DAMIN
 Test Date:2013-11-21

γ Range: 0 - 180DEG
 γ Interval: 1.0DEG
 Test System:EVERFINE GO-2000A_V1 SYSTEM V2.0.276
 Humidity:65.0%
 Test Distance:9.480m [K=1.0000]
 Remarks:

ISOCANDELA DIAGRAM

Test:U:230.8V I:0.0500A P:10.20W PF:0.8780 Lamp Flux:685.315x1 lm		
NAME: LED-DL10W-CW-W	TYPE:10	WEIGHT:
DIM.:	SPEC.:5000K	SERIAL No.:
MFR.:	SUR.:0.05*0.05	PROTECTION ANGLE:



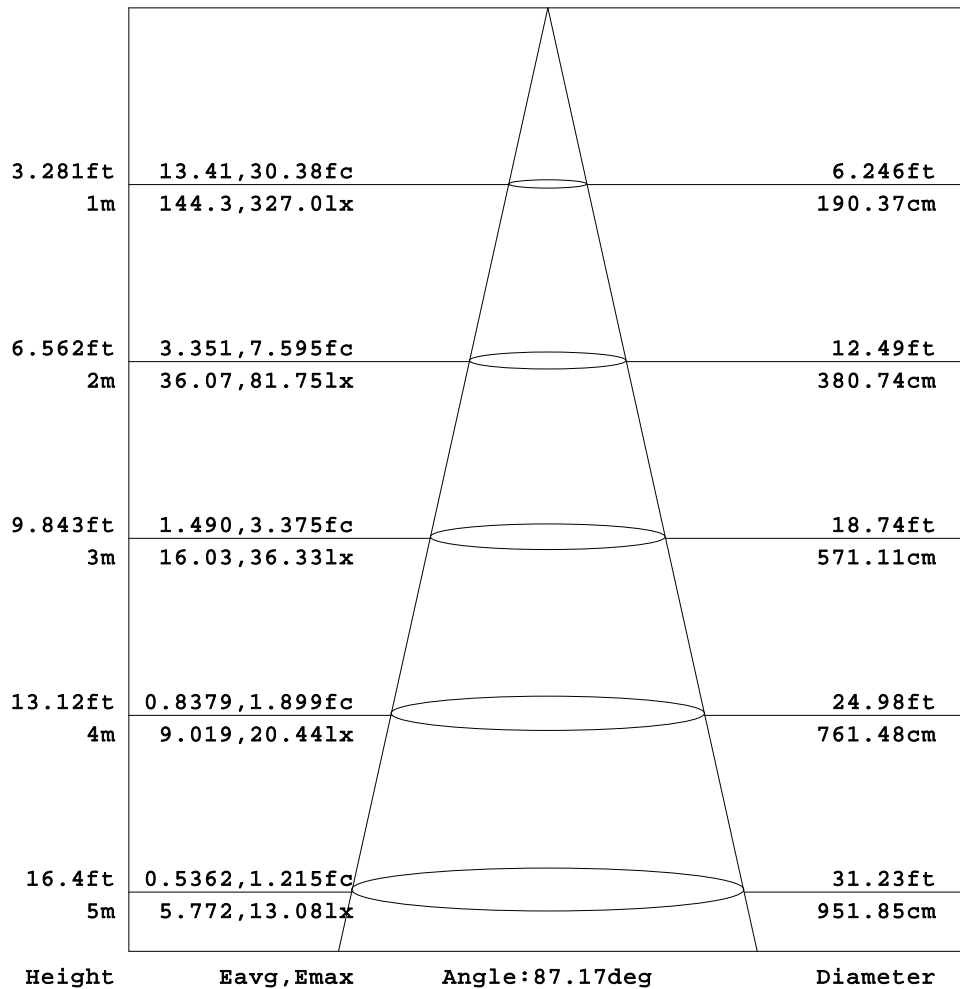
C Range: 0 - 360DEG
 C Interval: 15.0DEG
 Test Speed: HIGH
 Temperature:25.3DEG
 Operators:DAMIN
 Test Date:2013-11-21

γ Range: 0 - 180DEG
 γ Interval: 1.0DEG
 Test System:EVERFINE GO-2000A_V1 SYSTEM V2.0.276
 Humidity:65.0%
 Test Distance:9.480m [K=1.0000]
 Remarks:

AAI Figure

Test:U:230.8V I:0.0500A P:10.20W PF:0.8780 Lamp Flux:685.315x1 lm		
NAME: LED-DL10W-CW-W	TYPE:10	WEIGHT:
DIM.:	SPEC.:5000K	SERIAL No.:
MFR.:	SUR.:0.05*0.05	PROTECTION ANGLE:

Flux out:422.8 lm



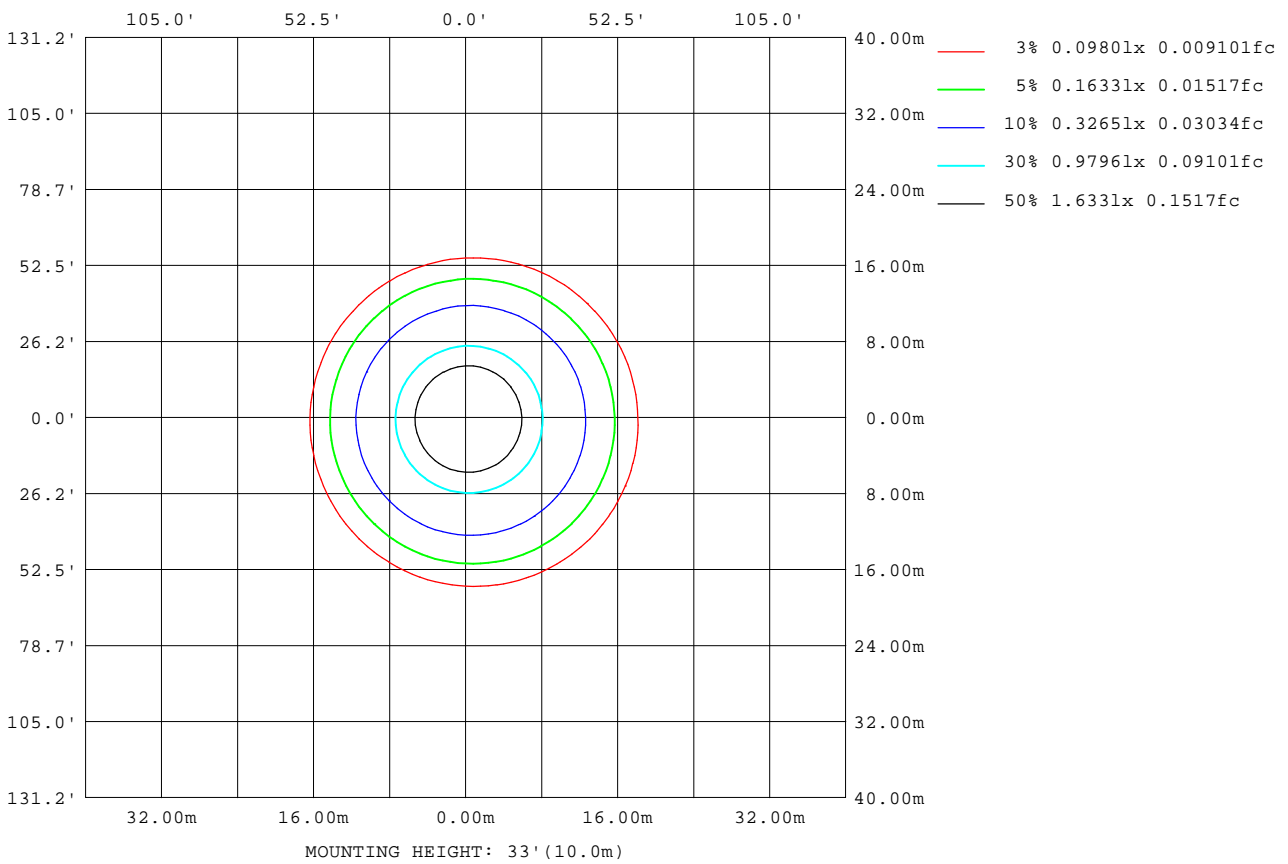
Note:The Curves indicate the illuminated area and the average illumination when the luminaire is at different distance.

C Range: 0 - 360DEG
 C Interval: 15.0DEG
 Test Speed: HIGH
 Temperature:25.3DEG
 Operators:DAMIN
 Test Date:2013-11-21

γ Range: 0 - 180DEG
 γ Interval: 1.0DEG
 Test System:EVERFINE GO-2000A_V1 SYSTEM V2.0.276
 Humidity:65.0%
 Test Distance:9.480m [K=1.0000]
 Remarks:

ISOLUX DIAGRAM

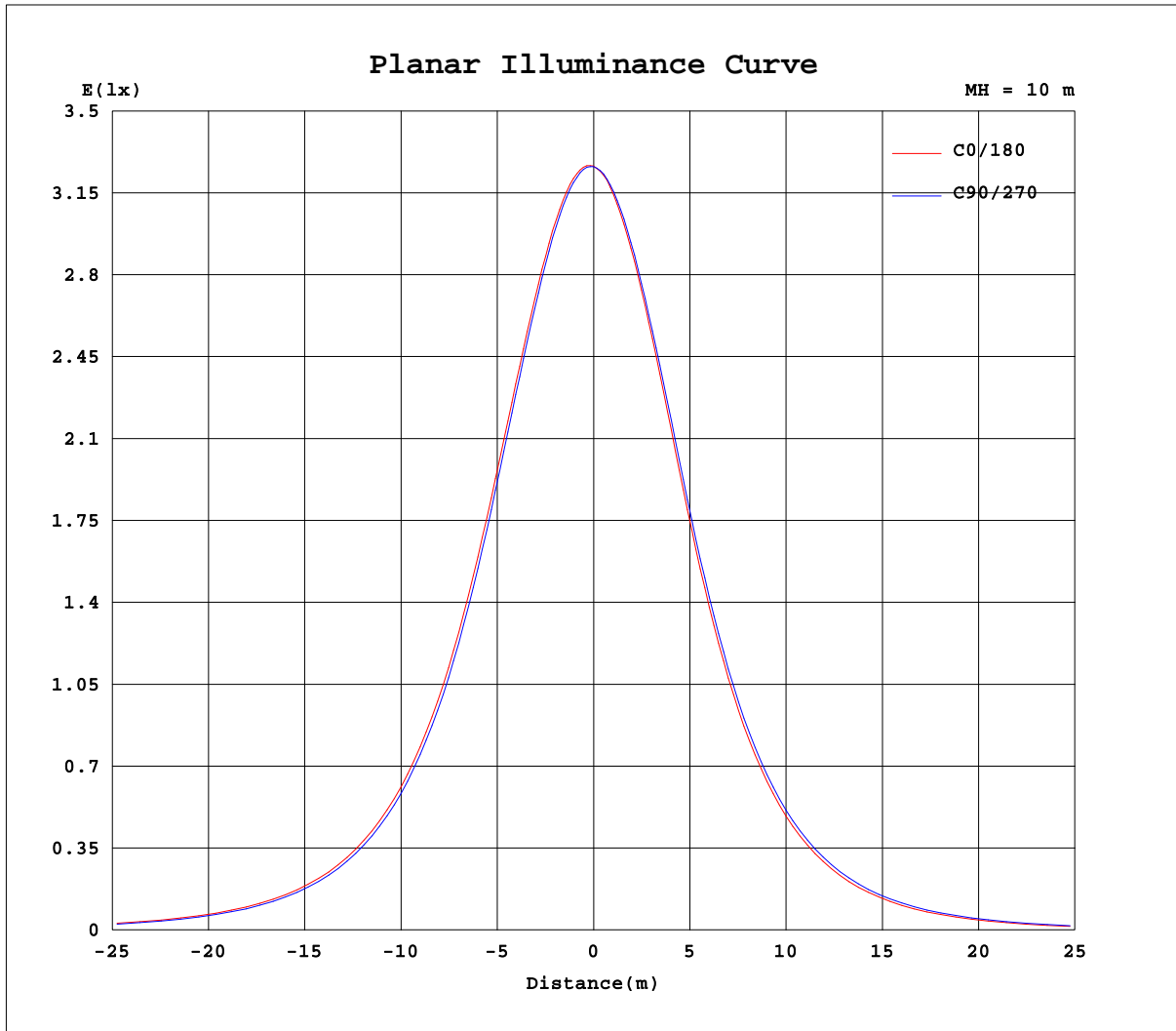
Test:U:230.8V I:0.0500A P:10.20W PF:0.8780 Lamp Flux:685.315x1 lm		
NAME: LED-DL10W-CW-W	TYPE:10	WEIGHT:
DIM.:	SPEC.:5000K	SERIAL No.:
MFR.:	SUR.:0.05*0.05	PROTECTION ANGLE:



C Range: 0 - 360DEG
 C Interval: 15.0DEG
 Test Speed: HIGH
 Temperature:25.3DEG
 Operators:DAMIN
 Test Date:2013-11-21

γ Range: 0 - 180DEG
 γ Interval: 1.0DEG
 Test System:EVERFINE GO-2000A_V1 SYSTEM V2.0.276
 Humidity:65.0%
 Test Distance:9.480m [K=1.0000]
 Remarks:

Planar Illuminance Curve



C Range: 0 - 360DEG
 C Interval: 15.0DEG
 Test Speed: HIGH
 Temperature: 25.3DEG
 Operators: DAMIN
 Test Date: 2013-11-21

γ Range: 0 - 180DEG
 γ Interval: 1.0DEG
 Test System: EVERFINE GO-2000A_V1 SYSTEM V2.0.276
 Humidity: 65.0%
 Test Distance: 9.480m [K=1.0000]
 Remarks:

LUMINOUS DISTRIBUTION INTENSITY DATA

Test:U:230.8V I:0.0500A P:10.20W PF:0.8780 Lamp Flux:685.315x1 lm		
NAME: LED-DL10W-CW-W	TYPE:10	WEIGHT:
DIM.:	SPEC.:5000K	SERIAL No.:
MFR.:	SUR.:0.05*0.05	PROTECTION ANGLE:

Table--1

UNIT: cd

C(DEG) γ (DEG)	0	15	30	45	60	75	90	105	120	135	150	165	180	195	210	225	240	255	270
0	326	326	326	326	326	326	326	326	326	326	326	326	326	326	326	326	326	326	326
5	327	327	327	327	327	326	325	324	324	323	322	321	321	320	320	320	321	321	322
10	322	323	323	323	322	321	320	318	316	314	313	311	310	310	310	310	311	311	313
15	313	314	315	314	313	311	309	307	304	301	299	297	296	295	294	295	296	297	299
20	299	301	301	301	299	297	294	291	288	284	281	278	277	275	275	275	277	278	282
25	281	283	284	283	281	279	275	271	266	262	258	255	253	251	250	251	252	255	259
30	258	261	261	261	258	255	251	246	241	236	231	227	225	223	223	223	225	227	232
35	232	234	235	234	232	228	223	218	213	208	202	198	196	194	193	194	196	198	203
40	203	206	206	206	203	200	195	189	184	178	173	169	166	164	164	164	167	169	174
45	173	176	177	176	174	171	166	161	155	149	144	140	138	136	136	136	138	141	145
50	145	147	148	148	145	142	137	132	127	122	116	113	111	109	109	109	111	114	118
55	117	120	121	121	118	115	110	106	100	95.5	90.7	87.4	85.6	83.8	83.8	84.2	86.3	88.6	92.4
60	92.1	94.6	95.1	94.9	92.7	89.8	85.5	81.1	76.0	71.7	67.3	64.3	62.8	61.2	61.4	61.8	63.8	65.9	69.4
65	69.0	71.3	71.7	71.4	69.2	66.6	62.6	58.7	54.2	50.4	46.6	44.0	42.6	41.4	41.4	41.9	43.8	45.8	48.9
70	48.5	50.5	50.7	50.3	48.3	45.9	42.4	39.0	35.2	32.1	29.0	26.9	26.0	24.9	25.0	25.5	27.0	28.8	31.4
75	31.0	32.5	32.5	32.1	30.3	28.4	25.5	22.9	20.1	17.8	15.7	14.3	14.0	13.3	13.4	13.6	14.6	15.8	17.8
80	17.2	18.2	18.1	17.8	16.6	15.2	13.4	11.8	10.4	9.41	8.42	7.73	7.77	7.39	7.45	7.60	8.13	8.76	9.72
85	9.23	9.62	9.57	9.40	8.81	8.16	7.20	6.36	5.33	4.53	3.65	2.99	2.99	2.72	2.76	2.86	3.40	3.92	4.73
90	4.22	4.59	4.57	4.46	4.00	3.49	2.73	2.11	1.78	1.78	1.79	1.78	2.23	2.25	2.25	2.24	2.25	2.26	2.55
95	1.80	2.20	1.79	1.79	1.79	1.79	1.79	1.78	1.79	1.80	1.80	1.82	2.19	2.20	2.20	2.20	2.22	2.19	2.22
100	1.85	1.82	1.79	1.80	1.80	1.82	1.79	1.82	1.85	1.85	1.84	1.87	2.19	2.20	2.19	2.20	2.19	2.20	2.20
105	1.89	1.87	1.83	1.87	1.82	1.87	1.89	1.88	1.90	1.92	1.92	1.95	2.22	2.20	2.23	2.21	2.21	2.21	2.20
110	1.94	1.94	1.93	1.93	1.94	1.94	1.90	1.96	1.96	2.01	1.97	2.04	2.28	2.23	2.28	2.23	2.28	2.22	2.25
115	1.98	2.02	1.97	2.02	1.98	2.04	2.01	2.06	2.05	2.10	2.09	2.15	2.36	2.34	2.37	2.33	2.35	2.34	2.32
120	2.08	2.14	2.11	2.13	2.11	2.14	2.14	2.19	2.16	2.22	2.22	2.27	2.45	2.42	2.47	2.43	2.45	2.41	2.42
125	2.25	2.26	2.23	2.24	2.21	2.27	2.23	2.28	2.27	2.34	2.32	2.39	2.58	2.53	2.59	2.52	2.56	2.52	2.52
130	2.33	2.37	2.32	2.37	2.32	2.39	2.35	2.43	2.40	2.48	2.45	2.52	2.70	2.68	2.72	2.68	2.70	2.62	2.65
135	2.48	2.51	2.46	2.50	2.46	2.51	2.52	2.55	2.53	2.60	2.58	2.65	2.83	2.79	2.84	2.78	2.82	2.78	2.78
140	2.61	2.64	2.60	2.63	2.60	2.64	2.61	2.68	2.72	2.74	2.73	2.79	2.97	2.97	2.97	2.92	2.94	2.87	2.91
145	2.79	2.77	2.76	2.77	2.75	2.78	2.77	2.82	2.79	2.88	2.86	2.91	3.08	3.04	3.09	3.06	3.06	3.00	3.03
150	2.87	2.91	2.86	2.90	2.86	2.92	2.88	2.95	2.94	3.01	3.00	3.05	3.20	3.16	3.20	3.14	3.18	3.12	3.13
155	3.02	3.05	2.99	3.05	3.00	3.05	3.03	3.09	3.06	3.13	3.15	3.18	3.29	3.27	3.30	3.25	3.29	3.21	3.24
160	3.15	3.19	3.15	3.18	3.15	3.20	3.15	3.23	3.21	3.26	3.25	3.30	3.40	3.36	3.40	3.37	3.38	3.32	3.36
165	3.33	3.33	3.28	3.33	3.33	3.33	3.33	3.36	3.33	3.39	3.40	3.45	3.49	3.48	3.50	3.43	3.47	3.46	3.45
170	3.40	3.45	3.41	3.45	3.40	3.45	3.42	3.47	3.46	3.49	3.50	3.53	3.56	3.52	3.56	3.51	3.54	3.50	3.53
175	3.54	3.55	3.52	3.54	3.51	3.53	3.52	3.55	3.50	3.56	3.53	3.59	3.60	3.60	3.59	3.58	3.59	3.59	3.58
180	3.61	3.60	3.60	3.61	3.60	3.58	3.58	3.60	3.58	3.58	3.59	3.60	3.60	3.60	3.59	3.59	3.59	3.58	3.59

C Range: 0 - 360DEG
 C Interval: 15.0DEG
 Test Speed: HIGH
 Temperature:25.3DEG
 Operators:DAMIN
 Test Date:2013-11-21

γ Range: 0 - 180DEG
 γ Interval: 1.0DEG
 Test System:EVERFINE GO-2000A_V1 SYSTEM V2.0.276
 Humidity:65.0%
 Test Distance:9.480m [K=1.0000]
 Remarks:

LUMINOUS DISTRIBUTION INTENSITY DATA

Test:U:230.8V I:0.0500A P:10.20W PF:0.8780 Lamp Flux:685.315x1 lm		
NAME: LED-DL10W-CW-W	TYPE:10	WEIGHT:
DIM.:	SPEC.:5000K	SERIAL No.:
MFR.:	SUR.:0.05*0.05	PROTECTION ANGLE:

Table--2

UNIT: cd

C(DEG) γ (DEG)	285	300	315	330	345															
0	326	326	326	326	326															
5	323	324	325	326	326															
10	315	317	318	320	321															
15	302	305	307	310	312															
20	284	288	291	295	298															
25	263	267	272	276	279															
30	236	242	247	252	256															
35	207	214	219	224	229															
40	178	184	189	195	200															
45	149	155	160	166	171															
50	122	127	132	138	142															
55	96.1	101	106	111	115															
60	72.8	77.4	81.6	86.2	89.9															
65	52.0	56.0	59.7	63.8	67.0															
70	34.0	37.5	40.5	44.1	46.8															
75	19.8	22.4	24.7	27.6	29.7															
80	10.7	12.0	13.4	15.2	16.6															
85	5.54	6.60	7.52	8.53	9.25															
90	2.28	2.32	2.93	3.73	4.24															
95	2.21	2.21	2.23	2.23	2.27															
100	2.19	2.19	2.19	2.21	2.21															
105	2.21	2.19	2.21	2.20	2.20															
110	2.23	2.22	2.22	2.21	2.20															
115	2.25	2.28	2.23	2.26	2.22															
120	2.34	2.38	2.32	2.33	2.31															
125	2.50	2.49	2.42	2.45	2.40															
130	2.61	2.60	2.58	2.56	2.50															
135	2.71	2.73	2.70	2.68	2.62															
140	2.83	2.85	2.80	2.81	2.80															
145	2.95	2.99	2.91	2.93	2.87															
150	3.07	3.09	3.07	3.06	3.05															
155	3.19	3.21	3.15	3.17	3.15															
160	3.30	3.32	3.26	3.29	3.23															
165	3.40	3.43	3.39	3.40	3.35															
170	3.50	3.51	3.51	3.50	3.50															
175	3.58	3.57	3.52	3.56	3.54															
180	3.59	3.58	3.60	3.59	3.61															

C Range: 0 - 360DEG
 C Interval: 15.0DEG
 Test Speed: HIGH
 Temperature:25.3DEG
 Operators:DAMIN
 Test Date:2013-11-21

γ Range: 0 - 180DEG
 γ Interval: 1.0DEG
 Test System:EVERFINE GO-2000A_V1 SYSTEM V2.0.276
 Humidity:65.0%
 Test Distance:9.480m [K=1.0000]
 Remarks: