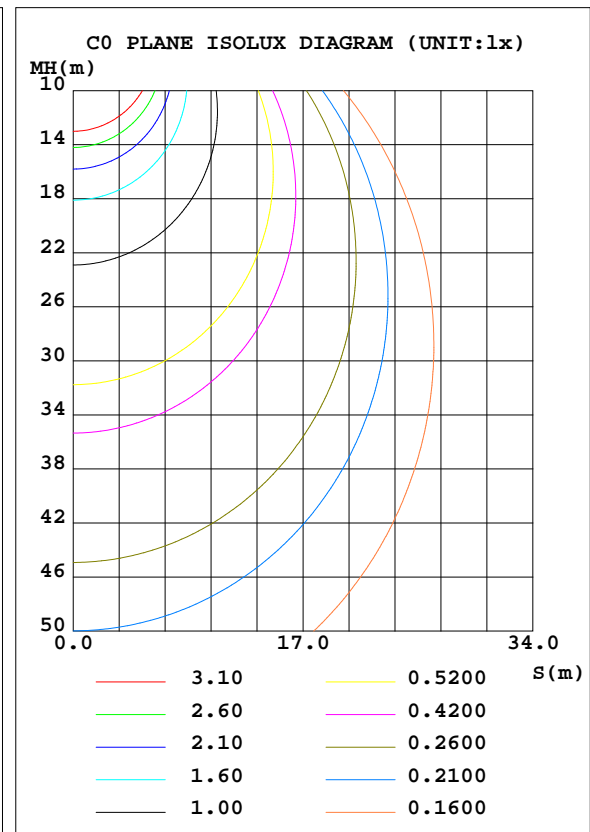
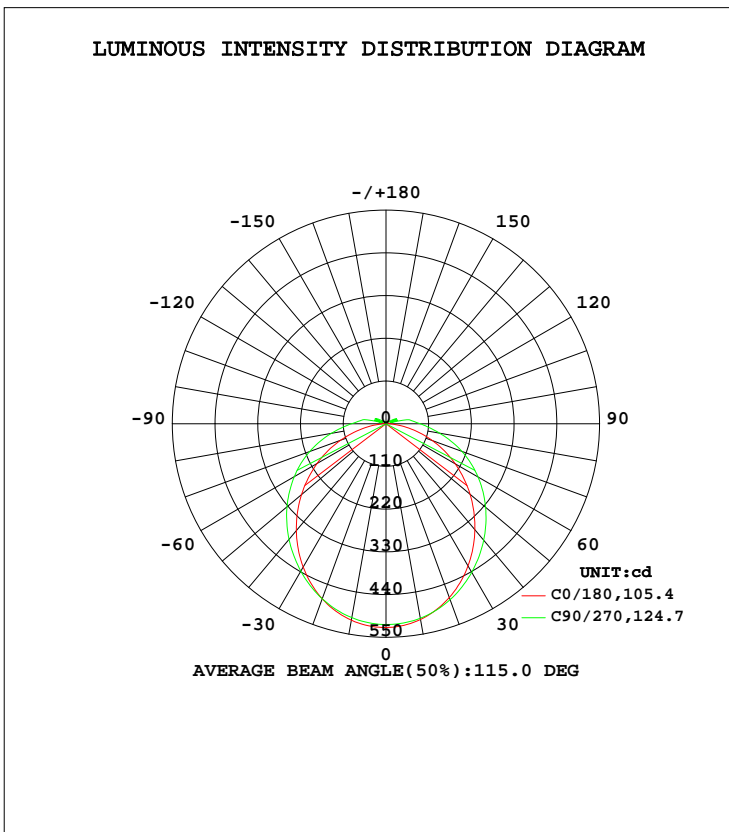


LUMINAIRE PHOTOMETRIC TEST REPORT

Test:U:229.9V I:0.0882A P:18.97W PF:0.9365 Lamp Flux:1685.73x1 lm		
NAME: LED waterproof light 18W-4000K	TYPE:LED	WEIGHT:
SPEC.:	DIM.:	SERIAL No.:1
MFR.:	SUR.:0.55*0.55	Shielding Angle:

DATA OF LAMP		PHOTOMETRIC DATA Eff: 88.85 lm/W			
MODEL		Imax(cd)	524.7	S/MH(C0/180)	1.21
NOMINAL POWER(W)	18	LOR(%)	100.0	S/MH(C90/270)	1.26
RATED VOLTAGE(V)	230.0	TOTAL FLUX(lm)	1685.7	η UP, DN(C0-180)	2.9,47.1
NOMINAL FLUX(lm)	1685.73	CIE CLASS	DIRECT	η UP, DN(C180-360)	3.0,47.0
LAMPS INSIDE	1	η up(%)	5.9	CIBSE SHR NOM	1.25
TEST VOLTAGE(V)	230	η down(%)	94.1	CIBSE SHR MAX	1.35



C Range: 0 - 360DEG
 C Interval: 22.5DEG
 Test Speed: HIGH
 Temperature:25.3DEG
 Operators:
 Test Date:12 January 2019

γ Range: 0 - 180DEG
 γ Interval: 1.0DEG
 Test System:EVERFINE GO-2000A_V1 SYSTEM V2.0.351
 Humidity:65.0%
 Test Distance:7.580m [K=1.0000]
 Remarks:

ZONAL FLUX DIAGRAM

ZONAL FLUX DIAGRAM:

γ	C0	C45	C90	C135	C180	C225	C270	C315	γ	Φ zone	Φ total	%lum,lamp
10	511.8	509.8	508.6	507.1	513.7	509.7	506.9	504.8	0- 10	49.04	49.04	2.91,2.91
20	476.4	479.2	482.1	477.7	479.8	479.2	479.7	473.8	10- 20	139.8	188.8	11.2,11.2
30	422.6	432.1	441.6	431.2	426.5	432.7	438.5	426.8	20- 30	210.3	399.1	23.7,23.7
40	356.3	373.6	391.5	373.1	359.2	374.3	388.5	369.0	30- 40	252.2	651.3	38.6,38.6
50	282.6	308.9	334.9	308.2	284.1	309.9	332.7	305.5	40- 50	263.3	914.5	54.3,54.3
60	205.6	240.8	273.6	239.4	205.2	242.1	272.9	238.8	50- 60	245.3	1160	68.8,68.8
70	127.2	171.3	207.9	169.0	124.7	173.7	209.1	171.6	60- 70	202.8	1363	80.8,80.8
80	53.47	104.5	140.4	101.5	48.55	106.6	143.3	105.7	70- 80	142.4	1505	89.3,89.3
90	9.539	56.96	88.21	54.90	7.234	57.08	89.15	56.45	80- 90	80.81	1586	94.1,94.1
100	7.525	22.08	60.70	20.51	6.144	23.48	61.01	24.33	90-100	46.12	1632	96.8,96.8
110	6.384	22.37	20.11	20.04	5.468	22.79	24.71	22.47	100-110	20.13	1652	98,98
120	5.631	9.384	22.51	8.450	5.050	9.903	25.85	9.410	110-120	14.14	1666	98.8,98.8
130	5.015	5.264	9.135	5.040	4.734	5.353	10.07	4.899	120-130	7.693	1674	99.3,99.3
140	4.692	4.550	5.556	4.531	4.639	4.678	5.810	4.533	130-140	4.119	1678	99.5,99.5
150	4.922	4.926	5.192	4.930	4.977	5.033	5.239	4.941	140-150	3.054	1681	99.7,99.7
160	5.422	5.412	5.462	5.384	5.467	5.449	5.488	5.403	150-160	2.409	1684	99.9,99.9
170	5.828	5.796	5.768	5.732	5.836	5.789	5.736	5.722	160-170	1.586	1685	100,100
180	5.981	5.967	5.913	5.913	6.013	5.977	5.928	5.906	170-180	0.5573	1686	100,100
DEG	LUMINOUS INTENSITY:cd									UNIT:lm		

Conical surface Flux(90deg): 783.4 lm

%lum = 46.5%

%lamp = 46.5%

Conical surface Flux(120deg): 1159.9 lm

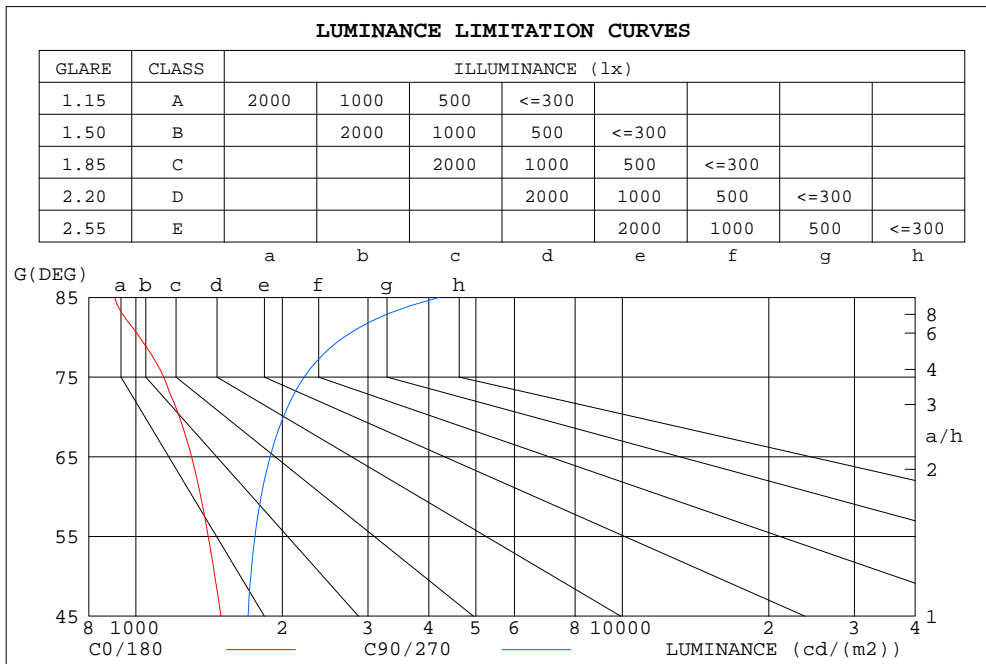
%lum = 68.8%

%lamp = 68.8%

C Range: 0 - 360DEG
 C Interval: 22.5DEG
 Test Speed: HIGH
 Temperature:25.3DEG
 Operators:
 Test Date:12 January 2019

γ Range: 0 - 180DEG
 γ Interval: 1.0DEG
 Test System:EVERFINE GO-2000A_V1 SYSTEM V2.0.351
 Humidity:65.0%
 Test Distance:7.580m [K=1.0000]
 Remarks:

LUMINANCE LIMITATION CURVES



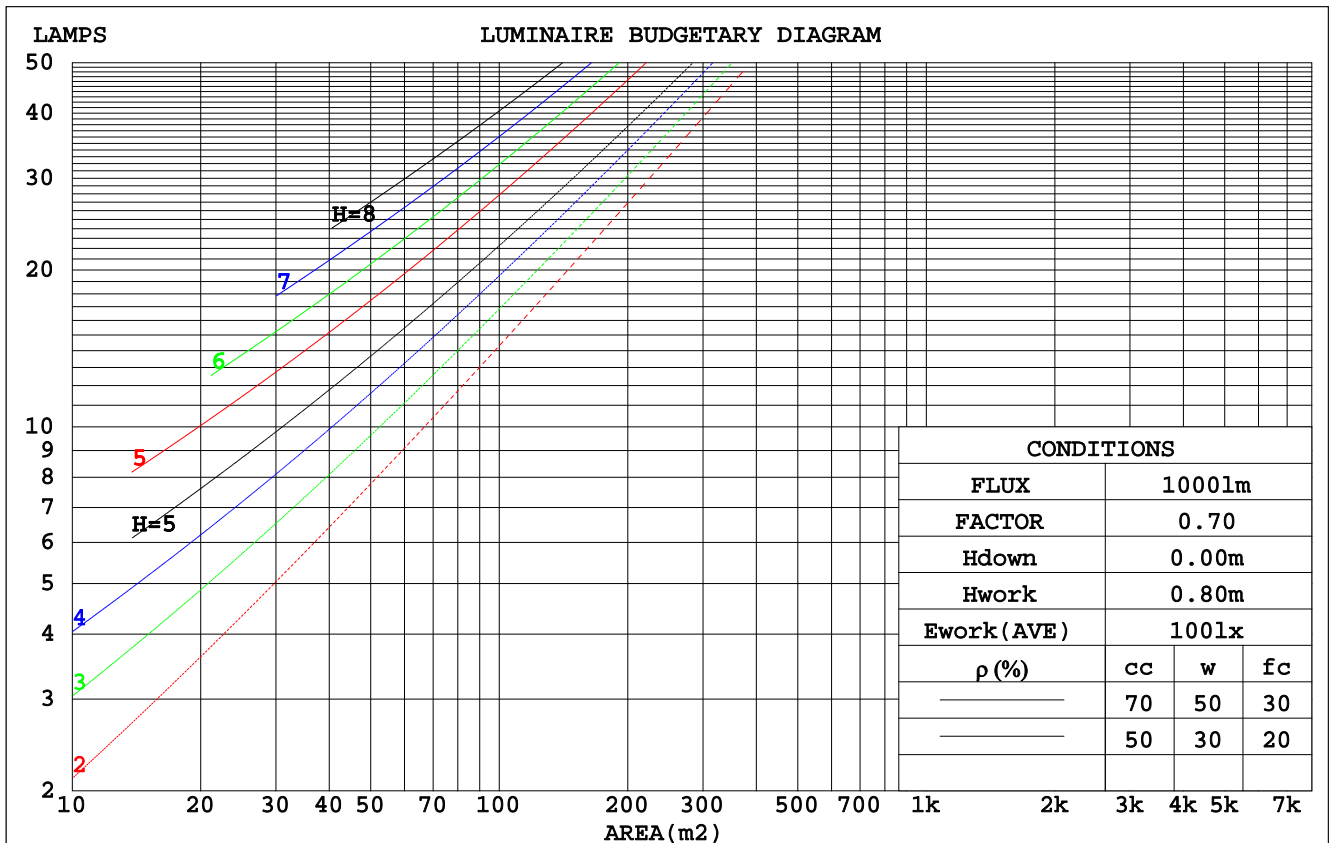
LUMINANCE cd/(m2)		
G (DEG)	C0/180	C90/270
85	905	4205
80	1018	2673
75	1141	2217
70	1229	2009
65	1302	1888
60	1359	1809
55	1408	1757
50	1453	1723
45	1496	1701

C Range: 0 - 360DEG
 C Interval: 22.5DEG
 Test Speed: HIGH
 Temperature: 25.3DEG
 Operators:
 Test Date: 12 January 2019

γ Range: 0 - 180DEG
 γ Interval: 1.0DEG
 Test System: EVERFINE GO-2000A_V1 SYSTEM V2.0.351
 Humidity: 65.0%
 Test Distance: 7.580m [K=1.0000]
 Remarks:

CU AND LUMINAIRE BUDGETARY ESTIMATE DIAGRAM

ρcc	80%			70%			50%			30%			10%			0
ρw	50%	30%	10%	50%	30%	10%	50%	30%	10%	50%	30%	10%	50%	30%	10%	0
ρfc	20%			20%			20%			20%			20%			0
RCR	RCR:Room Cavity Ratio						Coefficients of Utilization(CU)									
0.0	1.18	1.18	1.18	1.14	1.14	1.14	1.08	1.08	1.08	1.02	1.02	1.02	.97	.97	.97	.94
1.0	1.00	.96	.91	.98	.93	.89	.92	.89	.85	.87	.84	.82	.83	.80	.78	.76
2.0	.87	.79	.73	.84	.78	.72	.80	.74	.69	.76	.71	.67	.72	.68	.64	.62
3.0	.76	.67	.60	.74	.66	.59	.70	.63	.58	.66	.61	.56	.63	.58	.54	.52
4.0	.67	.58	.51	.65	.57	.50	.62	.55	.49	.59	.53	.47	.56	.51	.46	.44
5.0	.60	.50	.44	.58	.49	.43	.55	.48	.42	.53	.46	.41	.50	.45	.40	.38
6.0	.54	.44	.38	.52	.44	.37	.50	.42	.37	.48	.41	.36	.46	.40	.35	.33
7.0	.49	.40	.33	.47	.39	.33	.45	.38	.32	.43	.37	.32	.42	.36	.31	.29
8.0	.44	.36	.30	.43	.35	.29	.41	.34	.29	.40	.33	.28	.38	.32	.28	.26
9.0	.41	.32	.27	.40	.32	.26	.38	.31	.26	.37	.30	.25	.35	.29	.25	.23
10.0	.37	.29	.24	.37	.29	.24	.35	.28	.24	.34	.28	.23	.33	.27	.23	.21



C Range: 0 - 360DEG
 C Interval: 22.5DEG
 Test Speed: HIGH
 Temperature: 25.3DEG
 Operators:
 Test Date: 12 January 2019

γ Range: 0 - 180DEG
 γ Interval: 1.0DEG
 Test System: EVERFINE GO-2000A_V1 SYSTEM V2.0.351
 Humidity: 65.0%
 Test Distance: 7.580m [K=1.0000]
 Remarks:

WEC AND CCEC

ρ_{cc}	80%			70%			50%			30%			10%			0
ρ_w	50%	30%	10%	50%	30%	10%	50%	30%	10%	50%	30%	10%	50%	30%	10%	0
ρ_{fc}	20%			20%			20%			20%			20%			0
RCR	RCR:Room Cavity Ratio						Wall Exitance Coefficients(WEC)									
0.0																
1.0	.348	.198	.063	.339	.194	.062	.323	.185	.059	.307	.177	.057	.293	.170	.055	
2.0	.313	.172	.053	.305	.168	.052	.290	.161	.050	.276	.155	.049	.264	.149	.047	
3.0	.284	.151	.045	.276	.148	.045	.263	.143	.043	.251	.137	.042	.239	.132	.041	
4.0	.258	.134	.039	.252	.132	.039	.240	.127	.038	.229	.123	.037	.218	.119	.036	
5.0	.237	.121	.035	.231	.119	.035	.220	.115	.034	.210	.111	.033	.201	.107	.032	
6.0	.218	.109	.031	.213	.108	.031	.203	.104	.030	.194	.101	.030	.186	.098	.029	
7.0	.202	.100	.028	.197	.098	.028	.189	.095	.027	.180	.093	.027	.173	.090	.026	
8.0	.188	.092	.026	.184	.091	.026	.176	.088	.025	.168	.085	.025	.161	.083	.024	
9.0	.176	.085	.024	.172	.084	.024	.165	.081	.023	.158	.079	.023	.152	.077	.022	
10.0	.165	.079	.022	.161	.078	.022	.155	.076	.021	.149	.074	.021	.143	.072	.021	

ρ_{cc}	80%			70%			50%			30%			10%			0
ρ_w	50%	30%	10%	50%	30%	10%	50%	30%	10%	50%	30%	10%	50%	30%	10%	0
ρ_{fc}	20%			20%			20%			20%			20%			0
RCR	RCR:Room Cavity Ratio						Ceiling Cavity Exitance Coefficients(CCEC)									
0.0	.236	.236	.236	.201	.201	.201	.137	.137	.137	.079	.079	.079	.025	.025	.025	
1.0	.228	.201	.177	.195	.173	.152	.134	.119	.105	.077	.069	.061	.025	.022	.020	
2.0	.221	.178	.141	.189	.153	.122	.130	.106	.085	.075	.062	.050	.024	.020	.016	
3.0	.213	.160	.118	.183	.138	.103	.125	.096	.072	.072	.056	.042	.023	.018	.014	
4.0	.205	.147	.103	.176	.127	.090	.121	.089	.063	.070	.052	.037	.023	.017	.012	
5.0	.198	.137	.093	.170	.119	.081	.117	.083	.057	.068	.049	.034	.022	.016	.011	
6.0	.190	.129	.085	.164	.112	.074	.113	.078	.052	.065	.046	.031	.021	.015	.010	
7.0	.183	.122	.079	.158	.106	.069	.109	.074	.049	.063	.044	.029	.020	.014	.010	
8.0	.177	.116	.075	.152	.101	.066	.105	.071	.046	.061	.042	.028	.020	.014	.009	
9.0	.170	.112	.072	.147	.097	.063	.102	.068	.044	.059	.040	.027	.019	.013	.009	
10.0	.165	.107	.069	.142	.093	.060	.098	.066	.043	.057	.039	.026	.019	.013	.008	

C Range: 0 - 360DEG
 C Interval: 22.5DEG
 Test Speed: HIGH
 Temperature: 25.3DEG
 Operators:
 Test Date: 12 January 2019

γ Range: 0 - 180DEG
 γ Interval: 1.0DEG
 Test System: EVERFINE GO-2000A_V1 SYSTEM V2.0.351
 Humidity: 65.0%
 Test Distance: 7.580m [K=1.0000]
 Remarks:

UGR(Unified Glare Rating) Table

ceiling/cavity	0.7	0.7	0.5	0.5	0.3	0.7	0.7	0.5	0.5	0.3
walls	0.5	0.3	0.5	0.3	0.3	0.5	0.3	0.5	0.3	0.3
working plane	0.2	0.2	0.2	0.2	0.2	0.2	0.2	0.2	0.2	0.2
Room dimensions	Viewed crosswise					Viewed endwise				
x = 2H y = 2H	13.5	15.0	13.8	15.3	15.6	14.6	16.1	15.0	16.4	16.8
3H	15.0	16.4	15.4	16.7	17.1	16.8	18.1	17.2	18.5	18.9
4H	15.6	16.9	16.0	17.3	17.6	17.8	19.2	18.2	19.5	19.9
6H	16.0	17.3	16.4	17.6	18.0	18.9	20.2	19.3	20.5	20.9
8H	16.2	17.3	16.6	17.7	18.2	19.5	20.7	19.9	21.1	21.5
12H	16.2	17.4	16.7	17.8	18.2	20.1	21.3	20.6	21.7	22.1
4H 2H	14.3	15.6	14.7	16.0	16.4	15.2	16.5	15.6	16.9	17.3
3H	16.0	17.2	16.5	17.6	18.0	17.6	18.7	18.0	19.1	19.5
4H	16.8	17.8	17.2	18.3	18.7	18.8	19.9	19.3	20.3	20.8
6H	17.4	18.3	17.9	18.8	19.3	20.1	21.0	20.6	21.5	22.0
8H	17.6	18.5	18.1	18.9	19.4	20.8	21.7	21.3	22.1	22.6
12H	17.7	18.5	18.2	19.0	19.6	21.5	22.3	22.1	22.8	23.4
8H 4H	17.4	18.3	17.9	18.7	19.3	19.1	20.0	19.6	20.5	21.0
6H	18.2	19.0	18.7	19.5	20.0	20.6	21.4	21.2	21.9	22.5
8H	18.6	19.2	19.1	19.7	20.3	21.5	22.2	22.1	22.7	23.3
12H	18.8	19.4	19.4	20.0	20.6	22.5	23.1	23.1	23.6	24.2
12H 4H	17.5	18.3	18.0	18.8	19.4	19.1	19.9	19.6	20.4	20.9
6H	18.5	19.2	19.0	19.7	20.3	20.7	21.4	21.3	21.9	22.5
8H	18.9	19.5	19.5	20.1	20.7	21.7	22.3	22.3	22.8	23.4
Variations with the observer position at spacings:										
S = 1.0H	+ 0.1 / - 0.2					+ 0.1 / - 0.1				
1.5H	+ 0.2 / - 0.3					+ 0.2 / - 0.3				
2.0H	+ 0.1 / - 0.4					+ 0.2 / - 0.3				

CIE Pub.117 Corrected 1686 lm Total Lamp Luminous Flux.(8log(F/F0) = 1.8)

C Range: 0 - 360DEG
C Interval: 22.5DEG
Test Speed: HIGH
Temperature:25.3DEG
Operators:
Test Date:12 January 2019

γ Range: 0 - 180DEG
 γ Interval: 1.0DEG
Test System:EVERFINE GO-2000A_V1 SYSTEM V2.0.351
Humidity:65.0%
Test Distance:7.580m [K=1.0000]
Remarks:

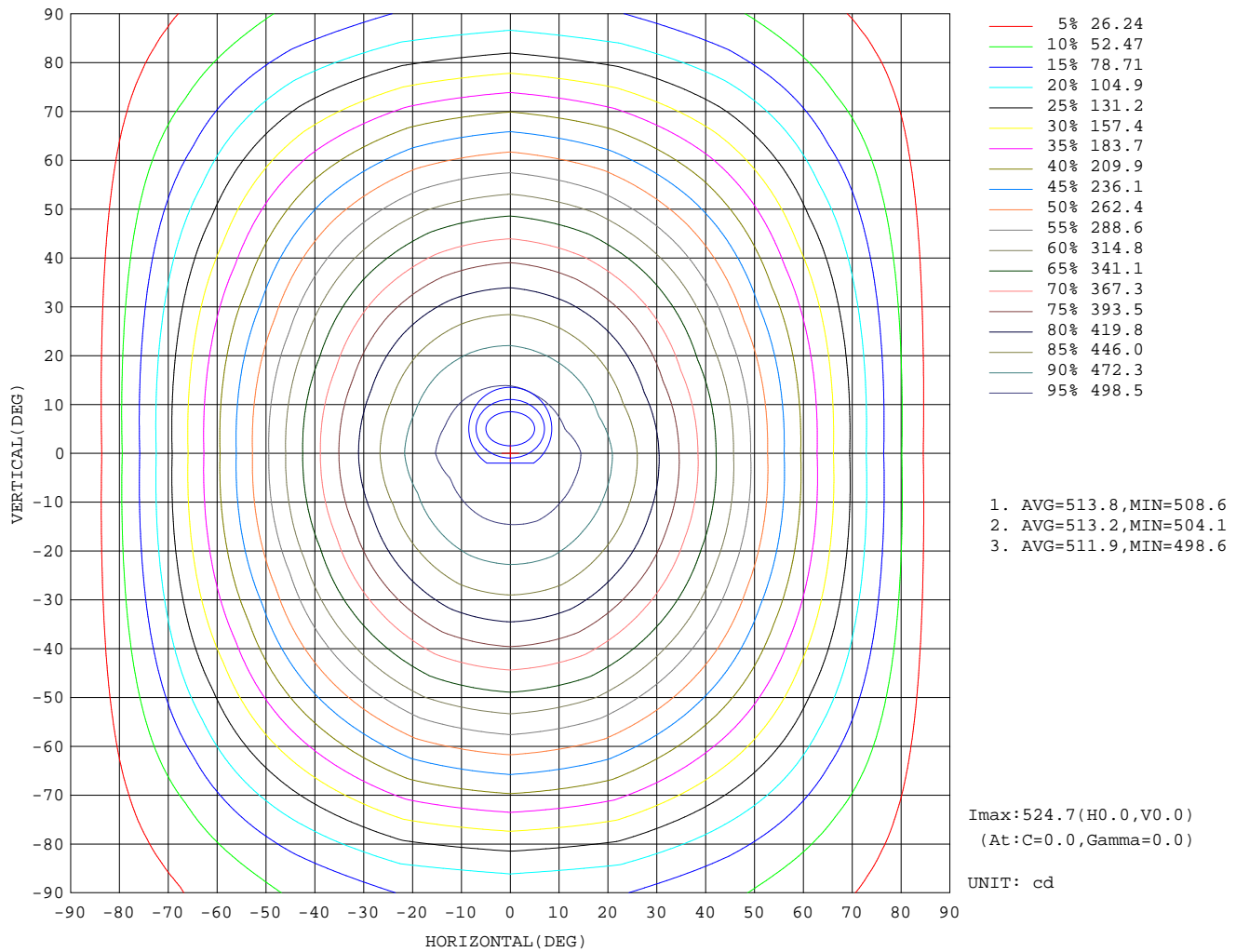
UTILIZATION FACTORS TABLE

REFLECTANCE										
Ceiling	0.8	0.8	0.8	0.7	0.7	0.7	0.5	0.5	0.5	0
Walls	0.7	0.5	0.3	0.7	0.5	0.3	0.7	0.5	0.3	0
Working plane	0.2	0.2	0.2	0.2	0.2	0.2	0.2	0.2	0.2	0
ROOM INDEX	UTILIZATION FACTORS(PERCENT) $k(RI) \times RCR = 5$									
$k = 0.60$	54	42	35	53	42	35	52	41	35	28
0.80	64	51	44	62	51	43	60	50	43	36
1.00	72	60	52	70	59	52	68	60	51	43
1.25	79	67	59	77	66	59	74	64	58	50
1.50	84	73	65	82	72	64	78	69	63	54
2.00	91	81	74	88	79	73	84	77	71	62
2.50	95	86	79	92	84	78	88	81	75	66
3.00	98	90	84	96	88	82	91	85	80	70
4.00	102	96	90	100	94	89	94	89	85	75
5.00	105	99	94	102	97	93	97	93	89	78
ROOM INDEX	UF(total)									Direct
According to DIN EN 13032-2 2004			Suspended				SHRNOM = 1.25			

C Range: 0 - 360DEG
 C Interval: 22.5DEG
 Test Speed: HIGH
 Temperature: 25.3DEG
 Operators:
 Test Date: 12 January 2019

γ Range: 0 - 180DEG
 γ Interval: 1.0DEG
 Test System: EVERFINE GO-2000A_V1 SYSTEM V2.0.351
 Humidity: 65.0%
 Test Distance: 7.580m [K=1.0000]
 Remarks:

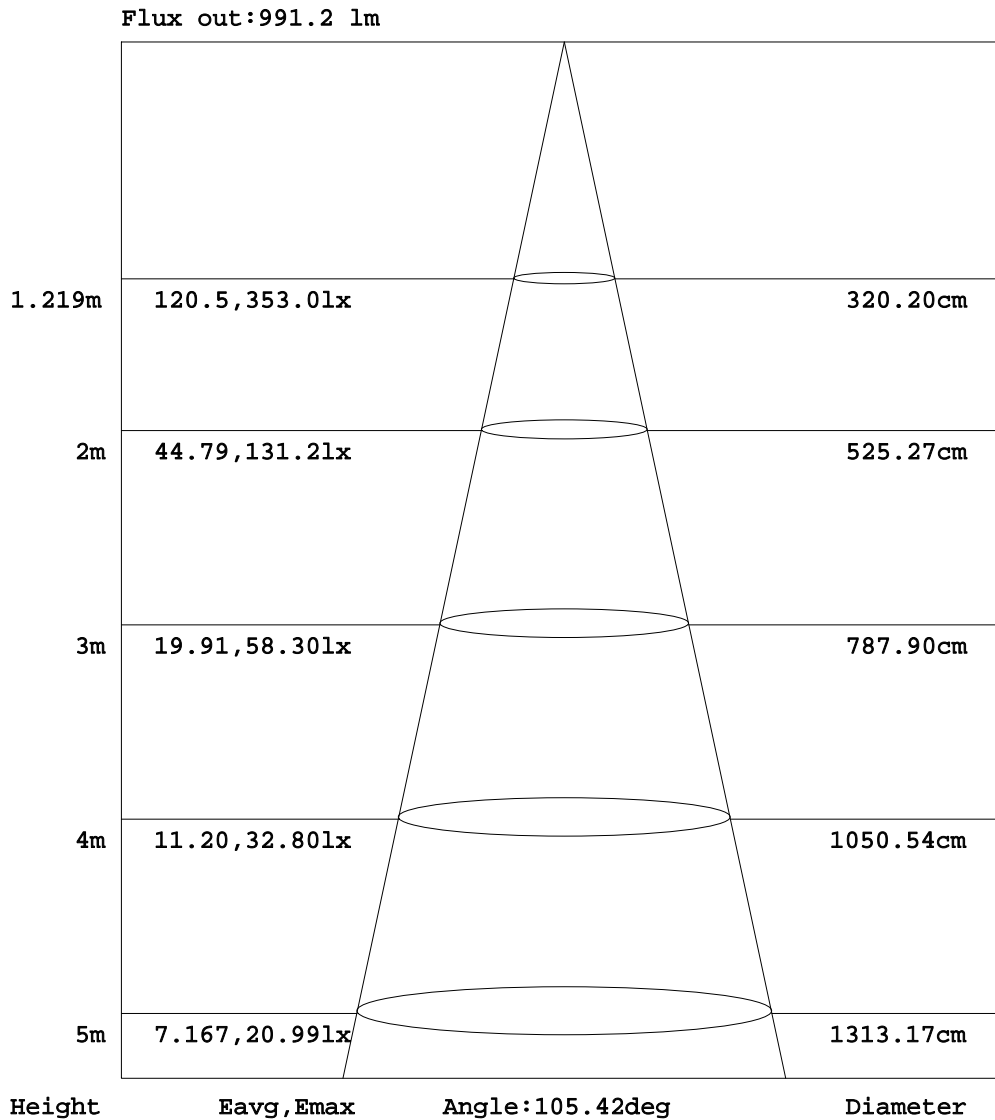
ISOCANDELA DIAGRAM



C Range: 0 - 360DEG
 C Interval: 22.5DEG
 Test Speed: HIGH
 Temperature: 25.3DEG
 Operators:
 Test Date: 12 January 2019

γ Range: 0 - 180DEG
 γ Interval: 1.0DEG
 Test System: EVERFINE GO-2000A_V1 SYSTEM V2.0.351
 Humidity: 65.0%
 Test Distance: 7.580m [K=1.0000]
 Remarks:

AAI Figure

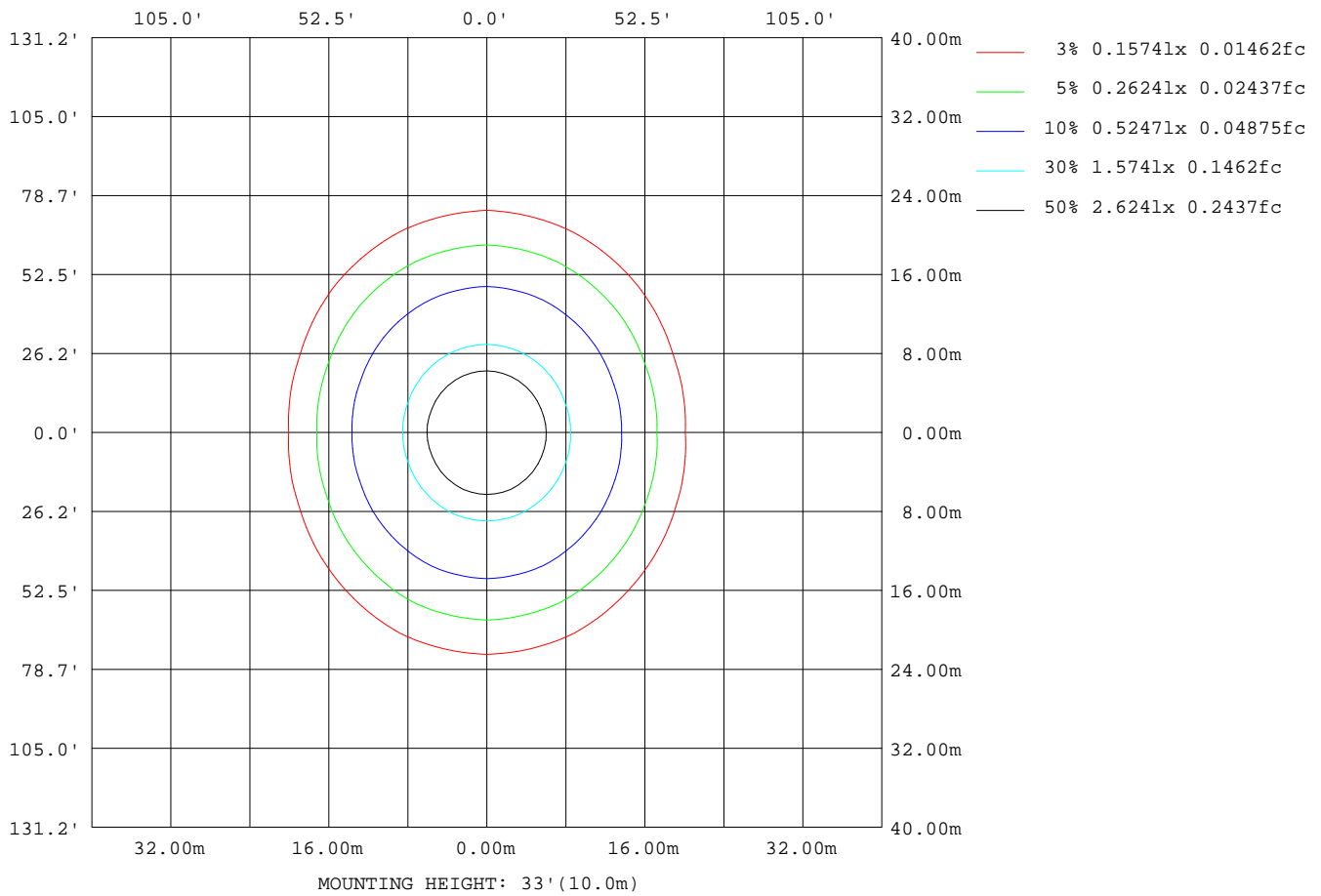


Note:The Curves indicate the illuminated area and the average illumination when the luminaire is at different distance.

C Range: 0 - 360DEG
 C Interval: 22.5DEG
 Test Speed: HIGH
 Temperature:25.3DEG
 Operators:
 Test Date:12 January 2019

γ Range: 0 - 180DEG
 γ Interval: 1.0DEG
 Test System:EVERFINE GO-2000A_V1 SYSTEM V2.0.351
 Humidity:65.0%
 Test Distance:7.580m [K=1.0000]
 Remarks:

ISOLUX DIAGRAM



C Range: 0 - 360DEG
 C Interval: 22.5DEG
 Test Speed: HIGH
 Temperature: 25.3DEG
 Operators:
 Test Date: 12 January 2019

γ Range: 0 - 180DEG
 γ Interval: 1.0DEG
 Test System: EVERFINE GO-2000A_V1 SYSTEM V2.0.351
 Humidity: 65.0%
 Test Distance: 7.580m [K=1.0000]
 Remarks:

LED Avg.L Report

Test:U:229.9V I:0.0882A P:18.97W PF:0.9365 Lamp Flux:1685.73x1 lm		
NAME: LED waterproof light 18W-4000K	TYPE:LED	WEIGHT:
SPEC.:	DIM.:	SERIAL No.:1
MFR.:	SUR.:0.55*0.55	Shielding Angle:

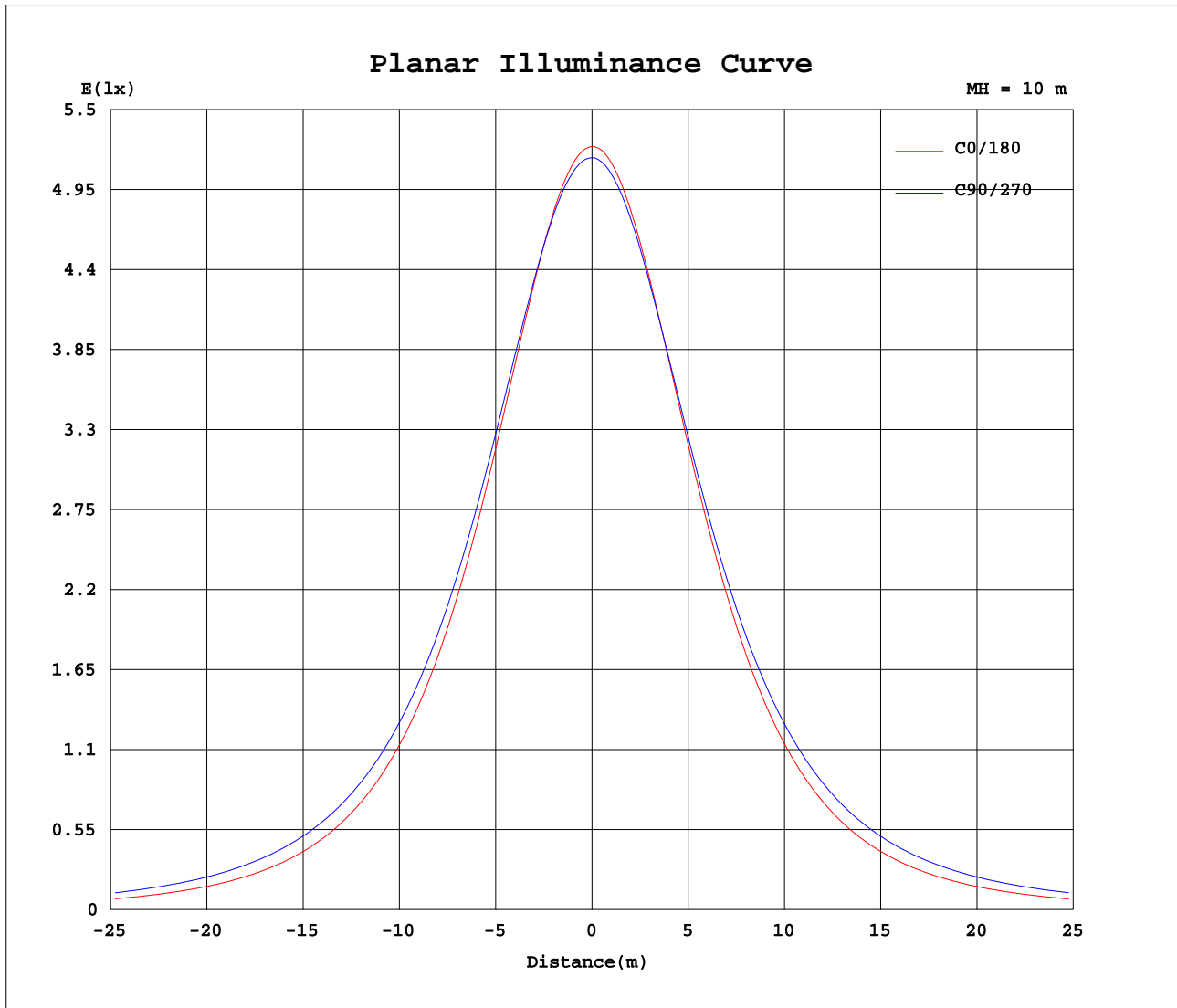
AvgL	cd/m2
L_0~180(65)av	1296
L_0~180(75)av	1114
L_0~180(85)av	820
L_90~270(65)av	1888
L_90~270(75)av	2233
L_90~270(85)av	4254
L_45(65)av	1612
L_45(75)av	1753
L_45(85)av	2909

Standard: GB/T 29293-2012

C Range: 0 - 360DEG
C Interval: 22.5DEG
Test Speed: HIGH
Temperature:25.3DEG
Operators:
Test Date:12 January 2019

γ Range: 0 - 180DEG
 γ Interval: 1.0DEG
Test System:EVERFINE GO-2000A_V1 SYSTEM V2.0.351
Humidity:65.0%
Test Distance:7.580m [K=1.0000]
Remarks:

Planar Illuminance Curve



C Range: 0 - 360DEG
 C Interval: 22.5DEG
 Test Speed: HIGH
 Temperature: 25.3DEG
 Operators:
 Test Date: 12 January 2019

γ Range: 0 - 180DEG
 γ Interval: 1.0DEG
 Test System: EVERFINE GO-2000A_V1 SYSTEM V2.0.351
 Humidity: 65.0%
 Test Distance: 7.580m [K=1.0000]
 Remarks:

LUMINOUS DISTRIBUTION INTENSITY DATA

Table--1

UNIT: cd

C(DEG) γ (DEG)	0	22.5	45	67.5	90	112.5	135	157.5	180	202.5	225	247.5	270	292.5	315	337.5			
0	525	522	520	519	517	516	516	517	525	522	520	519	517	516	516	517			
5	521	519	517	517	515	514	514	515	522	519	517	516	514	513	513	513			
10	512	510	510	510	509	508	507	507	514	510	510	508	507	505	505	504			
15	497	496	497	498	497	497	495	493	500	497	497	496	495	493	491	490			
20	476	477	479	482	482	481	478	475	480	477	479	480	480	477	474	470			
25	451	453	457	463	464	462	456	452	455	454	458	460	461	457	452	447			
30	423	426	432	440	442	439	431	424	426	426	433	437	439	434	427	419			
35	391	395	404	415	417	414	403	394	394	395	405	412	414	408	399	389			
40	356	362	374	387	392	387	373	360	359	362	374	384	389	381	369	356			
45	320	327	342	358	364	358	341	325	322	327	343	356	361	353	338	322			
50	283	292	309	329	335	328	308	289	284	291	310	326	333	323	305	286			
55	244	255	275	297	305	297	274	252	245	253	276	295	303	293	272	250			
60	206	218	241	265	274	265	239	215	205	216	242	264	273	261	239	214			
65	166	182	206	233	241	232	204	177	165	178	208	231	242	229	205	177			
70	127	145	171	200	208	199	169	140	125	141	174	198	209	197	172	141			
75	89.3	109	137	166	174	165	134	103	85.2	104	139	165	176	163	138	105			
80	53.5	74.9	105	133	140	132	102	69.1	48.5	71.2	107	132	143	131	106	72.8			
85	23.9	46.4	77.1	103	111	102	74.4	41.2	19.4	43.1	77.9	103	113	102	77.4	44.7			
90	9.54	29.0	57.0	80.6	88.2	79.8	54.9	25.4	7.23	26.6	57.1	80.5	89.1	79.5	56.5	27.4			
95	8.28	21.1	45.1	65.1	71.9	64.7	43.7	18.3	6.58	19.1	45.1	64.9	72.1	63.8	44.3	19.8			
100	7.53	14.3	22.1	53.5	60.7	52.4	20.5	12.4	6.14	12.9	23.5	53.3	61.0	52.4	24.3	13.5			
105	6.91	10.1	17.8	19.0	14.5	21.4	15.6	8.67	5.77	9.06	18.6	19.3	12.6	18.3	18.9	9.52			
110	6.38	7.66	22.4	12.3	20.1	12.3	20.0	6.68	5.47	7.13	22.8	12.5	24.7	12.1	22.5	7.41			
115	5.98	6.37	13.4	28.9	29.8	28.2	12.0	5.38	5.24	5.78	15.1	30.0	25.0	28.5	14.6	6.11			
120	5.63	5.52	9.38	17.6	22.5	16.9	8.45	4.84	5.05	5.05	9.90	21.1	25.9	20.1	9.41	5.44			
125	5.28	5.12	6.38	11.0	13.1	10.9	6.21	4.63	4.86	4.77	6.89	12.7	16.2	11.5	6.23	4.94			
130	5.01	4.88	5.26	7.56	9.13	7.79	5.04	4.51	4.73	4.65	5.35	8.66	10.1	7.89	4.90	4.67			
135	4.83	4.69	4.62	5.61	6.61	5.92	4.44	4.43	4.66	4.57	4.78	5.95	6.94	5.34	4.50	4.63			
140	4.69	4.57	4.55	5.13	5.56	5.15	4.53	4.41	4.64	4.56	4.68	5.27	5.81	4.90	4.53	4.58			
145	4.68	4.63	4.72	4.93	5.11	4.91	4.74	4.57	4.72	4.73	4.86	5.06	5.19	4.97	4.75	4.68			
150	4.92	4.89	4.93	5.13	5.19	5.08	4.93	4.84	4.98	4.96	5.03	5.15	5.24	5.15	4.94	4.91			
155	5.19	5.14	5.17	5.26	5.33	5.22	5.15	5.10	5.23	5.19	5.22	5.26	5.38	5.25	5.16	5.13			
160	5.42	5.40	5.41	5.47	5.46	5.40	5.38	5.34	5.47	5.43	5.45	5.44	5.49	5.44	5.40	5.37			
165	5.65	5.64	5.63	5.65	5.62	5.59	5.58	5.57	5.69	5.65	5.65	5.61	5.63	5.62	5.60	5.59			
170	5.83	5.82	5.80	5.80	5.77	5.73	5.73	5.74	5.84	5.81	5.79	5.74	5.74	5.73	5.72	5.75			
175	5.94	5.93	5.92	5.91	5.87	5.84	5.87	5.85	5.92	5.89	5.89	5.84	5.81	5.80	5.83	5.83			
180	5.98	5.97	5.97	5.95	5.91	5.88	5.91	5.89	6.01	5.96	5.98	5.93	5.93	5.88	5.91	5.89			

C Range: 0 - 360DEG
 C Interval: 22.5DEG
 Test Speed: HIGH
 Temperature: 25.3DEG
 Operators:
 Test Date: 12 January 2019

γ Range: 0 - 180DEG
 γ Interval: 1.0DEG
 Test System: EVERFINE GO-2000A_V1 SYSTEM V2.0.351
 Humidity: 65.0%
 Test Distance: 7.580m [K=1.0000]
 Remarks: