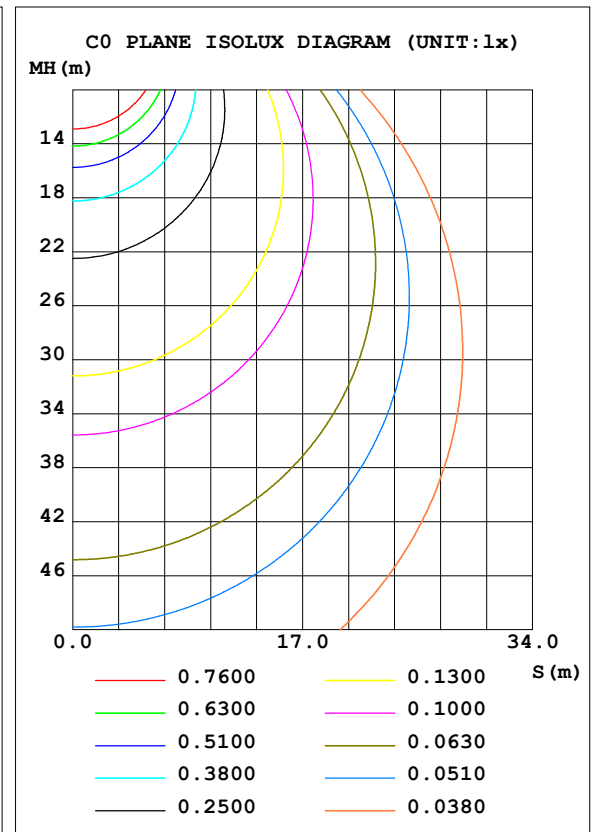
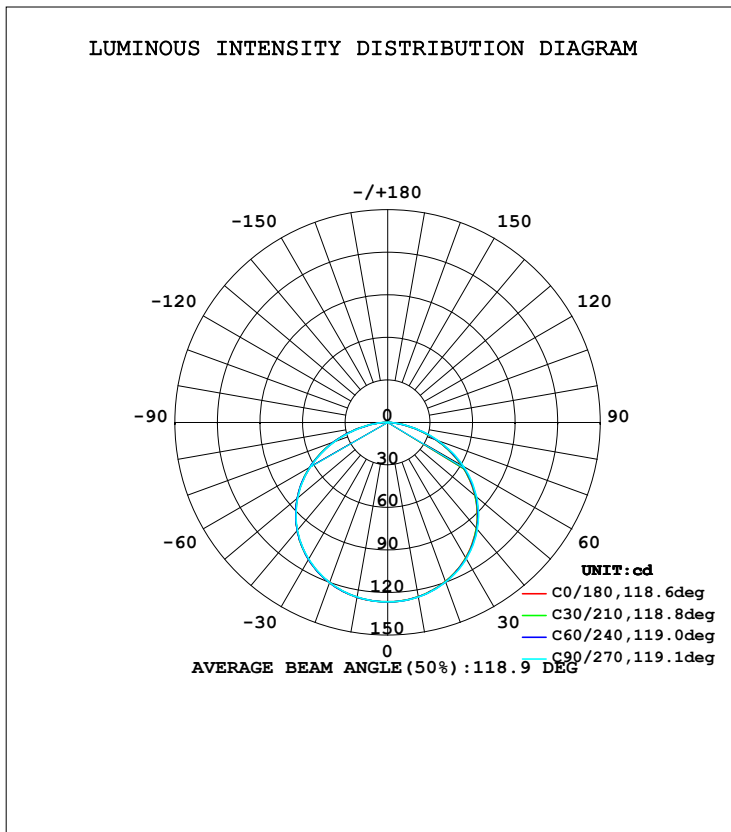


LUMINAIRE PHOTOMETRIC TEST REPORT

	TYPE:Strip	WEIGHT:0.05Kg
DIM.: 1000*10*2 (MM)	SPEC.:4.8W	SERIAL No.:01
	SUR.:1000*10 (MM)	PROTECTION ANGLE:120

DATA OF LAMP		PHOTOMETRIC DATA			
MODEL	LC32/3528/LED	Imax (cd)	126.6	S/MH (C0/180)	1.29
NOMINAL POWER (W)	4.8	LOR (%)	100.0	S/MH (C90/270)	1.30
RATED VOLTAGE (V)	12	TOTAL FLUX (lm)	390.74	η UP, DN (C0-180)	0.6, 49.2
NOMINAL FLUX (lm)	390.738	CIE CLASS	DIRECT	η UP, DN (C180-360)	0.5, 49.8
LAMPS INSIDE	1	η up (%)	1.0	CIBSE SHR NOM	1.50
TEST VOLTAGE (V)	12.0	η down (%)	99.0	CIBSE SHR MAX	1.50



C Range: 0 - 360DEG
 C Interval: 15.0DEG
 Test Speed: HIGH
 Temperature: 25.0DEG
 Operators: mo fu mei
 Test Date: 2015-09-16

γ Range: 0 - 180DEG
 γ Interval: 1.0DEG
 Test System: EVERFINE GO-2000B_V1 SYSTEM V2.0.275
 Humidity: 65.0%
 Test Distance: 7.000m [K=1.0000]
 Remarks:

ZONAL FLUX DIAGRAM

ZONAL FLUX DIAGRAM:

γ	C0	C45	C90	C135	C180	C225	C270	C315	γ	Φ zone	Φ total	%lum, lamp
10	124.7	124.9	124.9	125.2	125.2	125.1	125.0	124.8	0- 10	12.01	12.01	3.07,3.07
20	119.3	119.6	119.8	120.3	120.2	120.1	120.0	119.5	10- 20	34.71	46.71	12,12
30	110.2	110.6	111.0	111.6	111.7	111.6	111.4	110.6	20- 30	53.46	100.2	25.6,25.6
40	97.25	97.85	98.42	99.23	99.37	99.26	99.08	97.89	30- 40	65.88	166.1	42.5,42.5
50	80.41	81.21	81.88	83.04	83.26	83.21	82.91	81.42	40- 50	70.04	236.1	60.4,60.4
60	59.98	60.69	61.53	63.00	63.51	63.49	63.05	61.28	50- 60	64.77	300.9	77,77
70	36.69	37.25	37.97	39.95	40.63	40.51	40.04	38.02	60- 70	50.12	351.0	89.8,89.8
80	13.43	13.81	14.49	16.48	17.01	16.83	16.49	14.66	70- 80	28.34	379.3	97.1,97.1
90	0.5976	0.6099	0.3178	1.514	1.266	1.282	0.9883	0.6793	80- 90	7.426	386.8	99,99
100	0.3352	0.3531	0.3773	0.5769	0.2274	0.2656	0.2728	0.2586	90-100	0.4097	387.2	99.1,99.1
110	0.4785	0.4895	0.5172	0.6061	0.3531	0.3564	0.4126	0.3739	100-110	0.4021	387.6	99.2,99.2
120	0.6081	0.6327	0.6570	0.6921	0.4930	0.5208	0.5559	0.5137	110-120	0.5088	388.1	99.3,99.3
130	0.7583	0.7691	0.7864	0.8180	0.6433	0.6710	0.7063	0.6605	120-130	0.5861	388.7	99.5,99.5
140	0.9017	0.9019	0.9121	0.9159	0.7867	0.7968	0.8390	0.8002	130-140	0.6125	389.3	99.6,99.6
150	1.017	0.9927	1.017	1.024	0.9369	0.9296	0.9649	0.9366	140-150	0.5773	389.8	99.8,99.8
160	1.108	1.070	1.080	1.087	1.045	1.035	1.052	1.021	150-160	0.4727	390.3	99.9,99.9
170	1.150	1.131	1.122	1.134	1.140	1.118	1.120	1.104	160-170	0.3104	390.6	100,100
180	1.157	1.146	1.129	1.125	1.157	1.146	1.136	1.129	170-180	0.1081	390.7	100,100
DEG	LUMINOUS INTENSITY:cd									UNIT:lm		

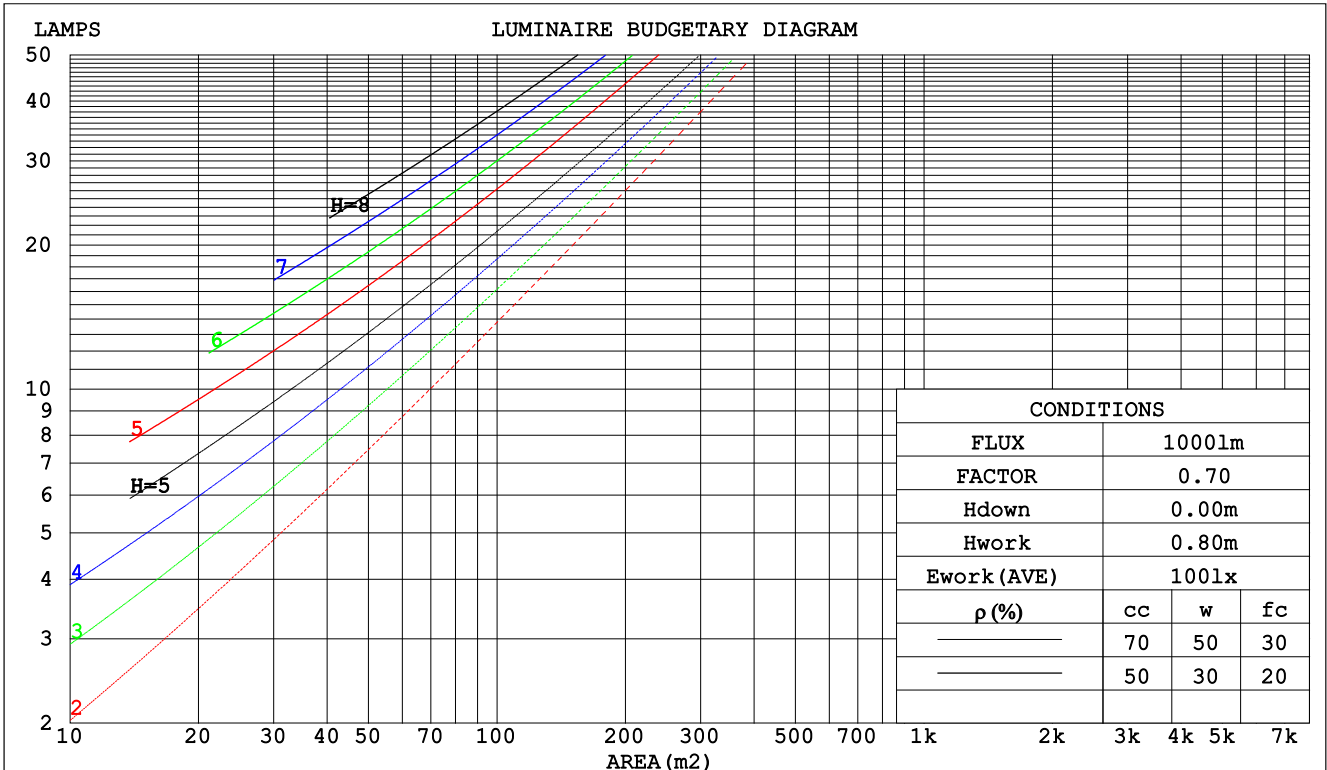
C Range: 0 - 360DEG
 C Interval: 15.0DEG
 Test Speed: HIGH
 Temperature:25.0DEG
 Operators:mo fu mei
 Test Date:2015-09-16

γ Range: 0 - 180DEG
 γ Interval: 1.0DEG
 Test System:EVERFINE GO-2000B_V1 SYSTEM V2.0.275
 Humidity:65.0%
 Test Distance:7.000m [K=1.0000]
 Remarks:

CU AND LUMINAIRE BUDGETARY ESTIMATE DIAGRAM

	TYPE:Strip	WEIGHT:0.05Kg
DIM.: 1000*10*2 (MM)	SPEC.:4.8W	SERIAL No.:01
	SUR.:1000*10 (MM)	PROTECTION ANGLE:120

pcc	80%			70%			50%			30%			10%			0
pw	50%	30%	10%	50%	30%	10%	50%	30%	10%	50%	30%	10%	50%	30%	10%	0
pfc	20%			20%			20%			20%			20%			0
RCR	RCR:Room Cavity Ratio															
	Coefficients of Utilization(CU)															
0.0	1.19	1.19	1.19	1.16	1.16	1.16	1.11	1.11	1.11	1.06	1.06	1.06	1.01	1.01	1.01	.99
1.0	1.03	.99	.95	1.01	.97	.93	.97	.93	.90	.92	.90	.87	.89	.87	.85	.82
2.0	.90	.83	.77	.88	.81	.76	.84	.79	.74	.81	.76	.72	.77	.74	.70	.68
3.0	.79	.70	.64	.77	.69	.63	.74	.67	.62	.71	.65	.60	.68	.63	.59	.57
4.0	.69	.60	.54	.68	.60	.53	.65	.58	.52	.63	.57	.51	.61	.55	.51	.48
5.0	.62	.53	.46	.61	.52	.46	.58	.51	.45	.56	.50	.44	.54	.48	.44	.42
6.0	.56	.46	.40	.55	.46	.40	.53	.45	.39	.51	.44	.39	.49	.43	.38	.36
7.0	.50	.41	.35	.49	.41	.35	.48	.40	.35	.46	.39	.34	.45	.39	.34	.32
8.0	.46	.37	.31	.45	.37	.31	.44	.36	.31	.42	.35	.31	.41	.35	.30	.28
9.0	.42	.34	.28	.41	.33	.28	.40	.33	.28	.39	.32	.27	.38	.32	.27	.25
10.0	.39	.31	.25	.38	.30	.25	.37	.30	.25	.36	.29	.25	.35	.29	.25	.23



C Range: 0 - 360DEG
 C Interval: 15.0DEG
 Test Speed: HIGH
 Temperature:25.0DEG
 Operators:mo fu mei
 Test Date:2015-09-16

γ Range: 0 - 180DEG
 γ Interval: 1.0DEG
 Test System:EVERFINE GO-2000B_V1 SYSTEM V2.0.275
 Humidity:65.0%
 Test Distance:7.000m [K=1.0000]
 Remarks:

WEC AND CCEC

	TYPE:Strip	WEIGHT:0.05Kg
DIM.: 1000*10*2 (MM)	SPEC.:4.8W	SERIAL No.:01
	SUR.:1000*10 (MM)	PROTECTION ANGLE:120

pcc	80%			70%			50%			30%			10%			0
pw	50%	30%	10%	50%	30%	10%	50%	30%	10%	50%	30%	10%	50%	30%	10%	0
pfc	20%			20%			20%			20%			20%			0
RCR	RCR:Room Cavity Ratio						Wall Exitance Coefficients(WEC)									
0.0																
1.0	.314	.179	.057	.307	.175	.056	.293	.168	.054	.280	.162	.052	.268	.156	.050	
2.0	.296	.162	.050	.289	.159	.049	.277	.154	.048	.266	.149	.047	.255	.144	.046	
3.0	.274	.146	.044	.268	.143	.043	.257	.139	.042	.247	.135	.041	.237	.131	.041	
4.0	.252	.131	.039	.247	.129	.038	.237	.126	.038	.228	.123	.037	.220	.120	.036	
5.0	.233	.119	.034	.228	.117	.034	.220	.114	.034	.212	.112	.033	.204	.109	.033	
6.0	.216	.108	.031	.212	.107	.031	.204	.105	.030	.197	.102	.030	.190	.100	.030	
7.0	.201	.099	.028	.197	.098	.028	.190	.096	.028	.184	.094	.027	.178	.092	.027	
8.0	.187	.092	.026	.184	.091	.026	.178	.089	.025	.172	.087	.025	.167	.086	.025	
9.0	.175	.085	.024	.173	.084	.024	.167	.083	.023	.162	.081	.023	.157	.080	.023	
10.0	.165	.079	.022	.162	.078	.022	.157	.077	.022	.152	.076	.022	.148	.074	.021	

pcc	80%			70%			50%			30%			10%			0
pw	50%	30%	10%	50%	30%	10%	50%	30%	10%	50%	30%	10%	50%	30%	10%	0
pfc	20%			20%			20%			20%			20%			0
RCR	RCR:Room Cavity Ratio						Ceiling Cavity Exitance Coefficients(CCEC)									
0.0	.198	.198	.198	.169	.169	.169	.116	.116	.116	.066	.066	.066	.021	.021	.021	
1.0	.188	.164	.142	.161	.141	.122	.110	.097	.084	.063	.056	.049	.020	.018	.016	
2.0	.181	.140	.105	.155	.120	.091	.106	.083	.064	.061	.048	.037	.020	.016	.012	
3.0	.173	.122	.082	.148	.105	.071	.102	.073	.050	.059	.043	.029	.019	.014	.010	
4.0	.166	.109	.066	.142	.094	.057	.098	.066	.040	.057	.038	.024	.018	.013	.008	
5.0	.158	.099	.055	.136	.085	.048	.094	.060	.034	.054	.035	.020	.017	.011	.007	
6.0	.151	.090	.047	.130	.078	.041	.090	.055	.029	.052	.032	.017	.017	.011	.006	
7.0	.144	.084	.041	.124	.072	.036	.086	.051	.025	.050	.030	.015	.016	.010	.005	
8.0	.138	.078	.037	.119	.067	.032	.082	.047	.023	.048	.028	.013	.015	.009	.004	
9.0	.132	.073	.033	.113	.063	.029	.079	.044	.020	.046	.026	.012	.015	.009	.004	
10.0	.126	.069	.030	.108	.059	.027	.075	.042	.019	.044	.025	.011	.014	.008	.004	

C Range: 0 - 360DEG
 C Interval: 15.0DEG
 Test Speed: HIGH
 Temperature:25.0DEG
 Operators:mo fu mei
 Test Date:2015-09-16

γ Range: 0 - 180DEG
 γ Interval: 1.0DEG
 Test System:EVERFINE GO-2000B_V1 SYSTEM V2.0.275
 Humidity:65.0%
 Test Distance:7.000m [K=1.0000]
 Remarks:

Uncorrected UGR Table

						TYPE:Strip	WEIGHT:0.05Kg				
DIM.: 1000*10*2 (MM)						SPEC.:4.8W	SERIAL No.:01				
						SUR.:1000*10 (MM)	PROTECTION ANGLE:120				
ceiling/cavity	0.7	0.7	0.5	0.5	0.3	0.7	0.7	0.5	0.5	0.3	
walls	0.5	0.3	0.5	0.3	0.3	0.5	0.3	0.5	0.3	0.3	
working plane	0.2	0.2	0.2	0.2	0.2	0.2	0.2	0.2	0.2	0.2	
Room dimensions	Viewed crosswise					Viewed endwise					
x = 2H y = 2H	21.6	23.1	21.9	23.3	23.5	21.7	23.2	22.0	23.4	23.6	
3H	23.1	24.5	23.4	24.7	25.0	23.2	24.6	23.5	24.9	25.1	
4H	23.6	25.0	23.9	25.2	25.5	23.8	25.1	24.1	25.4	25.7	
6H	23.9	25.2	24.3	25.5	25.8	24.1	25.4	24.5	25.7	26.0	
8H	24.0	25.2	24.4	25.5	25.9	24.2	25.4	24.6	25.7	26.1	
12H	24.0	25.2	24.4	25.5	25.9	24.3	25.4	24.6	25.7	26.1	
4H 2H	22.2	23.5	22.5	23.8	24.1	22.3	23.6	22.6	23.9	24.2	
3H	23.8	25.0	24.2	25.3	25.7	24.0	25.1	24.3	25.5	25.8	
4H	24.5	25.6	24.9	25.9	26.3	24.6	25.7	25.0	26.1	26.4	
6H	24.9	25.9	25.4	26.3	26.7	25.1	26.1	25.5	26.4	26.8	
8H	25.1	25.9	25.5	26.3	26.7	25.3	26.1	25.7	26.5	26.9	
12H	25.1	25.9	25.6	26.3	26.8	25.3	26.1	25.8	26.5	27.0	
8H 4H	24.7	25.6	25.2	26.0	26.4	24.9	25.8	25.3	26.1	26.5	
6H	25.3	26.0	25.8	26.5	26.9	25.5	26.2	25.9	26.6	27.1	
8H	25.5	26.1	26.0	26.6	27.0	25.7	26.3	26.1	26.8	27.2	
12H	25.6	26.1	26.1	26.6	27.1	25.8	26.4	26.3	26.8	27.3	
12H 4H	24.7	25.6	25.2	26.0	26.4	24.9	25.7	25.3	26.1	26.5	
6H	25.3	26.0	25.8	26.4	26.9	25.5	26.1	26.0	26.6	27.1	
8H	25.5	26.1	26.0	26.6	27.1	25.7	26.3	26.2	26.7	27.2	
Variations with the observer position at spacings:											
S = 1.0H	+ 0.2 / - 0.2					+ 0.2 / - 0.2					
1.5H	+ 0.2 / - 0.3					+ 0.2 / - 0.3					
2.0H	+ 0.2 / - 0.3					+ 0.2 / - 0.3					

CIE Pub.117 Corrected 390.7 lm Total Lamp Luminous Flux. (8log(F/F0) = -3.3)

C Range: 0 - 360DEG
 C Interval: 15.0DEG
 Test Speed: HIGH
 Temperature:25.0DEG
 Operators:mo fu mei
 Test Date:2015-09-16

γ Range: 0 - 180DEG
 γ Interval: 1.0DEG
 Test System:EVERFINE GO-2000B_V1 SYSTEM V2.0.275
 Humidity:65.0%
 Test Distance:7.000m [K=1.0000]
 Remarks:

UTILIZATION FACTORS TABLE

	TYPE:Strip	WEIGHT:0.05Kg
DIM.: 1000*10*2 (MM)	SPEC.:4.8W	SERIAL No.:01
	SUR.:1000*10 (MM)	PROTECTION ANGLE:120

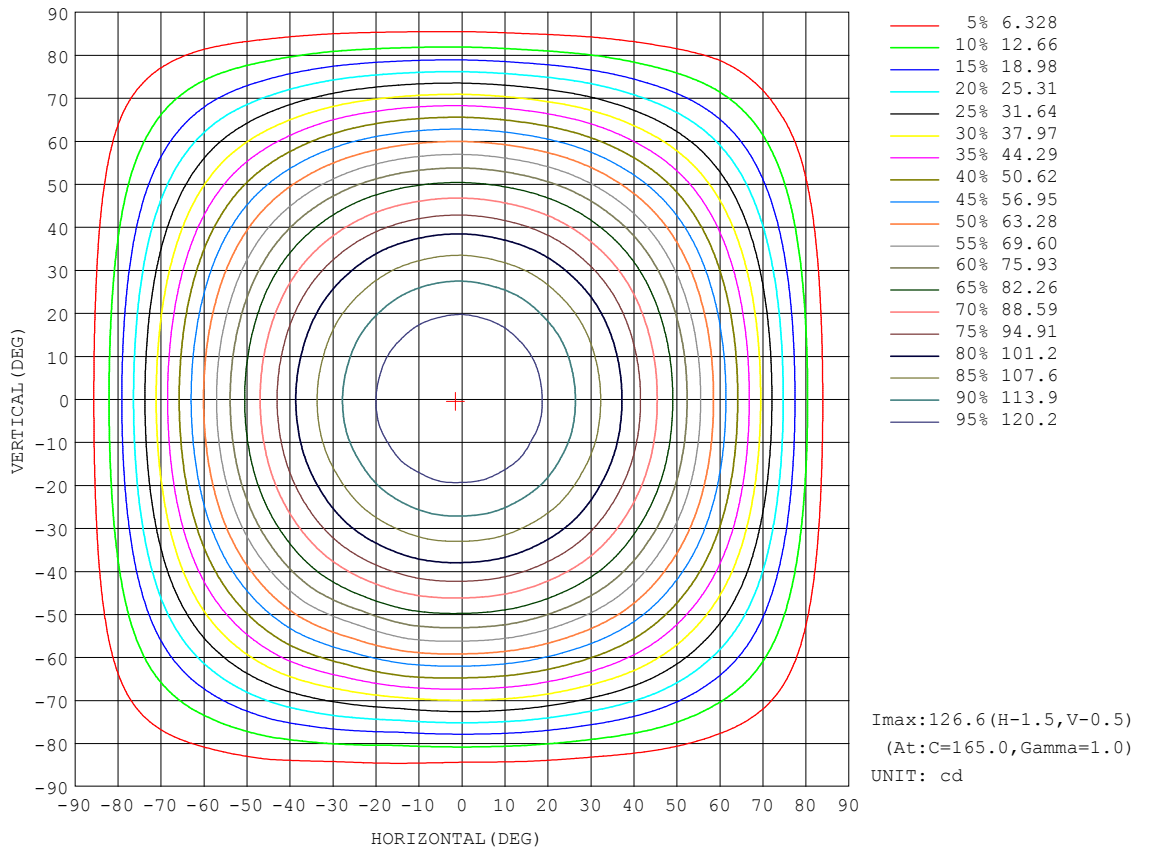
REFLECTANCE										
Ceiling	0.8	0.8	0.8	0.7	0.7	0.7	0.5	0.5	0.5	0
Walls	0.7	0.5	0.3	0.7	0.5	0.3	0.7	0.5	0.3	0
Working plane	0.2	0.2	0.2	0.2	0.2	0.2	0.2	0.2	0.2	0
ROOM INDEX	UTILIZATION FACTORS (PERCENT) $k(RI) \times RCR = 5$									
k = 0.60	56	44	37	55	44	37	54	44	37	31
0.80	66	54	47	65	54	47	63	53	46	39
1.00	75	63	56	74	63	56	71	64	55	48
1.25	82	71	64	80	71	64	78	69	63	55
1.50	87	77	70	85	76	69	82	74	68	60
2.00	94	85	79	92	84	78	89	82	76	68
2.50	98	90	84	96	89	83	92	86	81	72
3.00	102	95	89	99	93	88	95	90	85	77
4.00	106	100	95	103	98	94	99	94	91	82
5.00	108	103	99	106	101	97	101	97	94	85
ROOM INDEX	UF(total)									Direct
According to DIN EN 13032-2 2004			Suspended				SHRNOM = 1.25			

C Range: 0 - 360DEG
 C Interval: 15.0DEG
 Test Speed: HIGH
 Temperature:25.0DEG
 Operators:mo fu mei
 Test Date:2015-09-16

γ Range: 0 - 180DEG
 γ Interval: 1.0DEG
 Test System:EVERFINE GO-2000B_V1 SYSTEM V2.0.275
 Humidity:65.0%
 Test Distance:7.000m [K=1.0000]
 Remarks:

ISOCANDELA DIAGRAM

	TYPE:Strip	WEIGHT:0.05Kg
DIM.: 1000*10*2 (MM)	SPEC.:4.8W	SERIAL No.:01
	SUR.:1000*10 (MM)	PROTECTION ANGLE:120

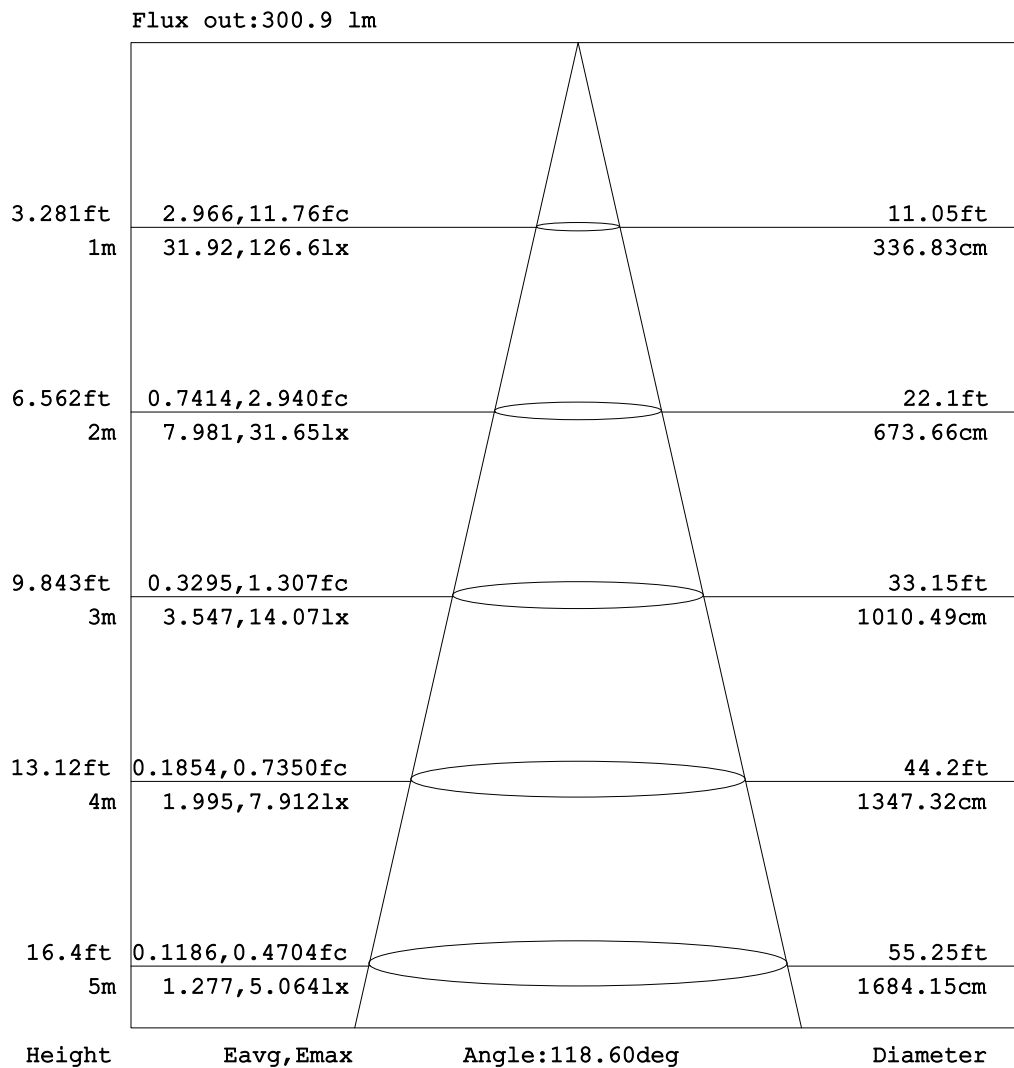


C Range: 0 - 360DEG
 C Interval: 15.0DEG
 Test Speed: HIGH
 Temperature:25.0DEG
 Operators:mo fu mei
 Test Date:2015-09-16

γ Range: 0 - 180DEG
 γ Interval: 1.0DEG
 Test System:EVERFINE GO-2000B_V1 SYSTEM V2.0.275
 Humidity:65.0%
 Test Distance:7.000m [K=1.0000]
 Remarks:

AAI Figure

	TYPE:Strip	WEIGHT:0.05Kg
DIM.: 1000*10*2 (MM)	SPEC.:4.8W	SERIAL No.:01
	SUR.:1000*10 (MM)	PROTECTION ANGLE:120



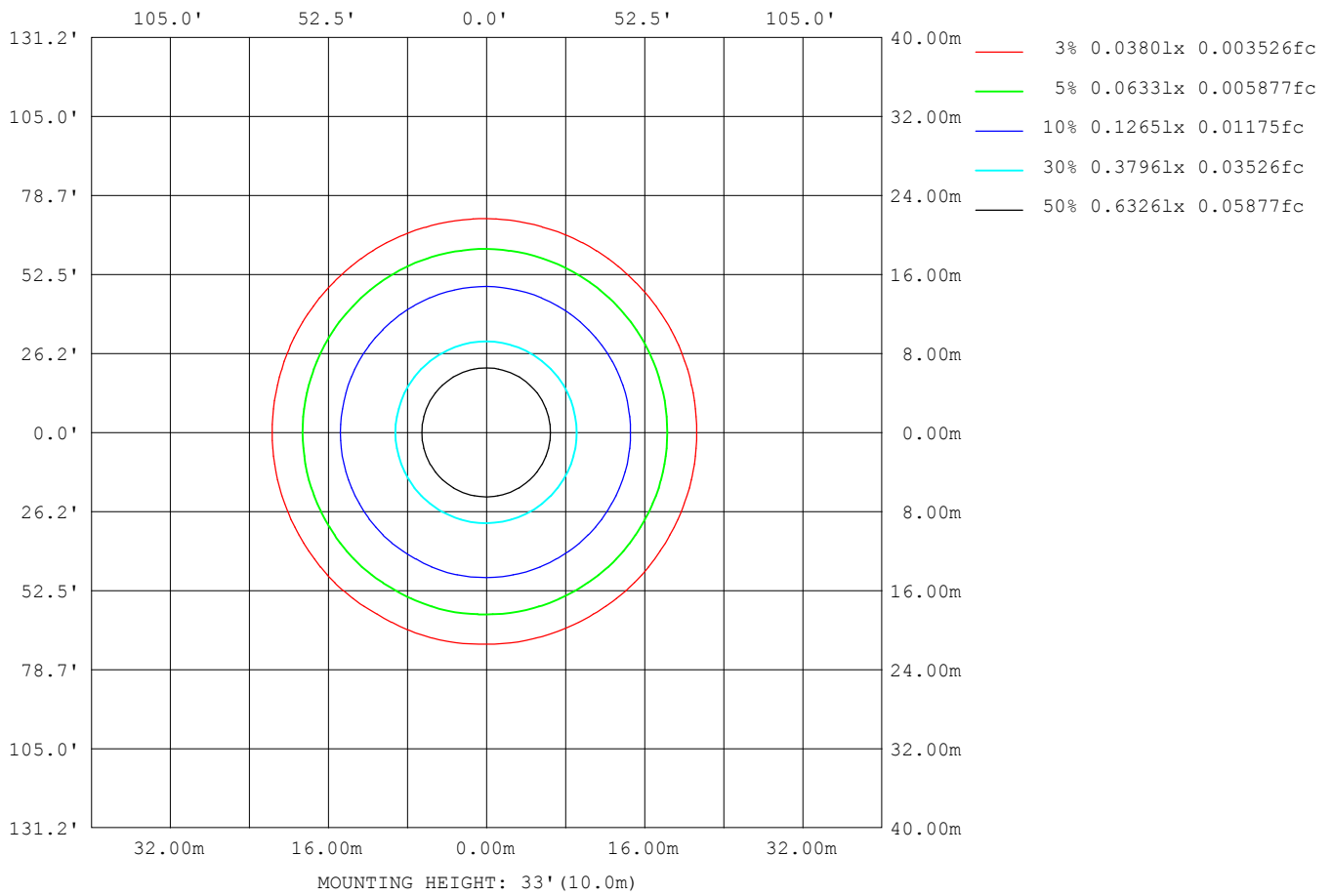
Note: The Curves indicate the illuminated area and the average illumination when the luminaire is at different distance.

C Range: 0 - 360DEG
 C Interval: 15.0DEG
 Test Speed: HIGH
 Temperature: 25.0DEG
 Operators: mo fu mei
 Test Date: 2015-09-16

γ Range: 0 - 180DEG
 γ Interval: 1.0DEG
 Test System: EVERFINE GO-2000B_V1 SYSTEM V2.0.275
 Humidity: 65.0%
 Test Distance: 7.000m [K=1.0000]
 Remarks:

ISOLUX DIAGRAM

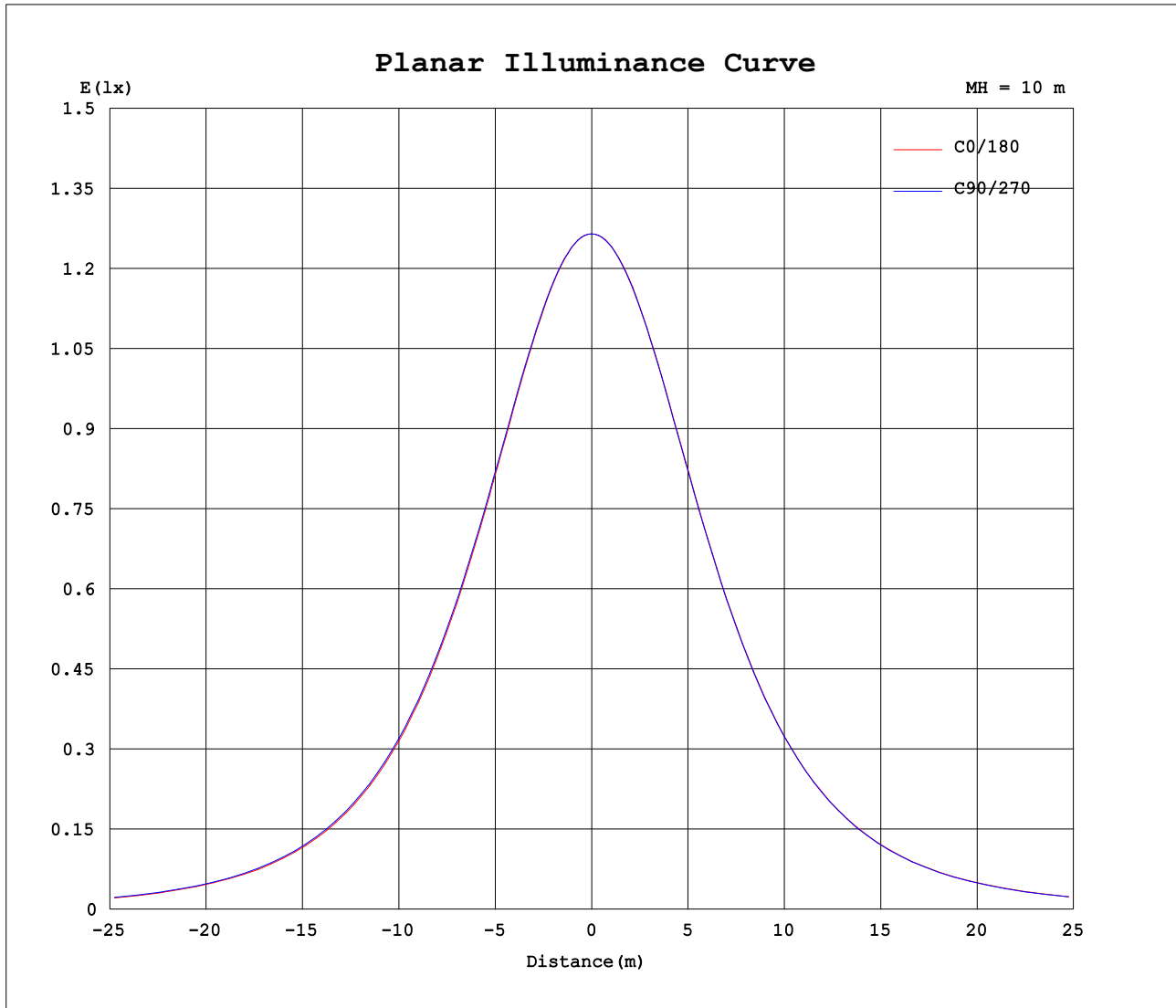
	TYPE:Strip	WEIGHT:0.05Kg
DIM.: 1000*10*2 (MM)	SPEC.:4.8W	SERIAL No.:01
	SUR.:1000*10 (MM)	PROTECTION ANGLE:120



C Range: 0 - 360DEG
 C Interval: 15.0DEG
 Test Speed: HIGH
 Temperature:25.0DEG
 Operators:mo fu mei
 Test Date:2015-09-16

γ Range: 0 - 180DEG
 γ Interval: 1.0DEG
 Test System:EVERFINE GO-2000B_V1 SYSTEM V2.0.275
 Humidity:65.0%
 Test Distance:7.000m [K=1.0000]
 Remarks:

Planar Illuminance Curve



C Range: 0 - 360DEG
 C Interval: 15.0DEG
 Test Speed: HIGH
 Temperature: 25.0DEG
 Operators: mo fu mei
 Test Date: 2015-09-16

γ Range: 0 - 180DEG
 γ Interval: 1.0DEG
 Test System: EVERFINE GO-2000B_V1 SYSTEM V2.0.275
 Humidity: 65.0%
 Test Distance: 7.000m [K=1.0000]
 Remarks:

LUMINOUS DISTRIBUTION INTENSITY DATA

	TYPE:Strip	WEIGHT:0.05Kg
DIM.: 1000*10*2 (MM)	SPEC.:4.8W	SERIAL No.:01
	SUR.:1000*10 (MM)	PROTECTION ANGLE:120

Table--1

UNIT: cd

C (DEG) γ (DEG)	0	15	30	45	60	75	90	105	120	135	150	165	180	195	210	225	240	255	270
0	127	127	126	127	127	127	126	127	127	127	127	127	127	127	126	127	127	127	126
5	126	126	126	126	126	126	126	126	126	126	126	126	126	126	126	126	126	126	126
10	125	125	125	125	125	125	125	125	125	125	125	125	125	125	125	125	125	125	125
15	122	123	123	123	123	123	123	123	123	123	123	123	123	123	123	123	123	123	123
20	119	119	119	120	120	120	120	120	120	120	120	120	120	120	120	120	120	120	120
25	115	115	115	116	116	116	116	116	116	116	116	116	116	116	116	116	116	116	116
30	110	110	110	111	111	111	111	111	111	112	112	112	112	112	112	112	112	111	111
35	104	104	104	105	105	105	105	106	106	106	106	106	106	106	106	106	106	106	106
40	97.2	97.4	97.5	97.9	98.0	98.3	98.4	98.9	98.9	99.2	99.2	99.4	99.4	99.2	99.4	99.3	99.4	99.2	99.1
45	89.3	89.5	89.5	90.0	90.1	90.5	90.6	91.2	91.2	91.6	91.5	91.7	91.8	91.7	91.9	91.7	91.8	91.6	91.5
50	80.4	80.7	80.7	81.2	81.3	81.8	81.9	82.5	82.4	83.0	82.9	83.3	83.3	83.2	83.3	83.2	83.4	83.1	82.9
55	70.7	71.0	70.9	71.4	71.5	72.1	72.2	72.9	72.2	73.5	73.4	73.8	73.8	73.7	74.0	73.8	73.9	73.7	73.5
60	60.0	60.3	60.1	60.7	60.8	61.4	61.5	62.1	61.8	63.0	63.0	63.4	63.5	63.4	63.6	63.5	63.5	63.3	63.1
65	48.6	48.8	48.7	49.3	49.4	49.9	50.1	51.0	50.5	51.8	51.8	52.2	52.4	52.3	52.5	52.3	52.4	52.1	51.9
70	36.7	36.9	36.7	37.2	37.3	37.9	38.0	38.0	38.6	39.9	40.2	40.5	40.6	40.5	40.8	40.5	40.6	40.3	40.0
75	24.6	24.8	24.6	25.1	25.1	25.7	25.9	25.7	27.1	28.0	28.0	28.4	28.6	28.5	28.7	28.5	28.5	28.2	28.0
80	13.4	13.6	13.4	13.8	13.8	14.3	14.5	14.6	15.6	16.5	16.5	16.9	17.0	16.9	17.1	16.8	16.9	16.7	16.5
85	4.71	4.81	4.69	5.00	5.04	5.42	5.36	6.13	6.32	7.15	6.99	7.21	7.31	7.20	7.41	7.21	7.32	7.11	7.03
90	0.60	0.57	0.54	0.61	0.67	0.78	0.32	1.11	1.15	1.51	1.26	1.32	1.27	1.21	1.32	1.28	1.38	1.31	0.99
95	0.30	0.28	0.29	0.30	0.31	0.30	0.29	0.33	0.41	0.63	0.37	0.27	0.19	0.21	0.23	0.26	0.27	0.26	0.21
100	0.34	0.34	0.34	0.35	0.36	0.38	0.38	0.40	0.39	0.58	0.41	0.34	0.23	0.23	0.26	0.27	0.26	0.26	0.27
105	0.39	0.41	0.40	0.42	0.42	0.44	0.45	0.47	0.48	0.60	0.51	0.41	0.29	0.29	0.30	0.29	0.32	0.33	0.34
110	0.48	0.48	0.47	0.49	0.49	0.52	0.52	0.54	0.55	0.61	0.51	0.48	0.35	0.34	0.37	0.36	0.39	0.39	0.41
115	0.55	0.55	0.56	0.56	0.56	0.59	0.59	0.60	0.62	0.64	0.60	0.55	0.42	0.41	0.44	0.44	0.47	0.46	0.48
120	0.61	0.63	0.62	0.63	0.63	0.66	0.66	0.67	0.67	0.69	0.66	0.62	0.49	0.49	0.51	0.52	0.54	0.55	0.56
125	0.68	0.70	0.67	0.70	0.71	0.73	0.73	0.74	0.72	0.74	0.72	0.69	0.57	0.57	0.58	0.60	0.63	0.62	0.63
130	0.76	0.78	0.74	0.77	0.78	0.80	0.79	0.81	0.79	0.82	0.78	0.76	0.64	0.65	0.66	0.67	0.70	0.69	0.71
135	0.84	0.84	0.82	0.83	0.84	0.86	0.85	0.86	0.84	0.86	0.83	0.83	0.72	0.72	0.74	0.73	0.77	0.77	0.78
140	0.90	0.92	0.89	0.90	0.90	0.93	0.91	0.93	0.91	0.92	0.90	0.91	0.79	0.78	0.81	0.80	0.83	0.84	0.84
145	0.97	0.98	0.95	0.96	0.96	0.98	0.97	0.98	0.96	0.98	0.95	0.98	0.86	0.85	0.87	0.87	0.90	0.90	0.91
150	1.02	1.03	1.01	0.99	1.00	1.02	1.02	1.02	1.01	1.02	1.01	1.02	0.94	0.92	0.95	0.93	0.96	0.96	0.96
155	1.06	1.08	1.06	1.03	1.04	1.06	1.05	1.06	1.05	1.06	1.06	1.07	1.00	0.98	1.01	1.00	1.02	1.01	1.02
160	1.11	1.11	1.09	1.07	1.08	1.09	1.08	1.09	1.07	1.09	1.09	1.09	1.05	1.01	1.05	1.03	1.06	1.04	1.05
165	1.13	1.14	1.11	1.12	1.11	1.12	1.11	1.12	1.11	1.12	1.12	1.12	1.09	1.06	1.09	1.08	1.10	1.08	1.09
170	1.15	1.14	1.13	1.13	1.13	1.13	1.12	1.12	1.12	1.13	1.13	1.14	1.14	1.11	1.14	1.12	1.13	1.12	1.12
175	1.16	1.14	1.14	1.14	1.13	1.14	1.13	1.12	1.12	1.14	1.13	1.14	1.16	1.13	1.14	1.14	1.14	1.13	1.13
180	1.16	1.14	1.14	1.15	1.14	1.15	1.13	1.13	1.13	1.13	1.13	1.14	1.16	1.14	1.14	1.15	1.14	1.14	1.14

C Range: 0 - 360DEG
 C Interval: 15.0DEG
 Test Speed: HIGH
 Temperature:25.0DEG
 Operators:mo fu mei
 Test Date:2015-09-16

γ Range: 0 - 180DEG
 γ Interval: 1.0DEG
 Test System:EVERFINE GO-2000B_V1 SYSTEM V2.0.275
 Humidity:65.0%
 Test Distance:7.000m [K=1.0000]
 Remarks:

LUMINOUS DISTRIBUTION INTENSITY DATA

	TYPE:Strip	WEIGHT:0.05Kg
DIM.: 1000*10*2 (MM)	SPEC.:4.8W	SERIAL No.:01
	SUR.:1000*10 (MM)	PROTECTION ANGLE:120

Table--2

UNIT: cd

C (DEG) \ γ (DEG)	285	300	315	330	345														
0	127	127	127	127	127														
5	126	126	126	126	126														
10	125	125	125	125	125														
15	123	123	123	123	122														
20	120	120	120	120	119														
25	116	116	116	115	115														
30	111	111	111	110	110														
35	105	105	105	105	104														
40	98.6	98.4	97.9	97.7	97.4														
45	91.0	90.7	90.2	89.9	89.5														
50	82.4	82.1	81.4	81.1	80.7														
55	72.8	72.5	71.8	71.5	71.0														
60	62.4	62.0	61.3	60.9	60.4														
65	51.1	50.7	49.9	49.6	49.0														
70	39.3	38.9	38.0	37.7	37.0														
75	27.2	26.8	26.0	25.6	25.0														
80	15.8	15.4	14.7	14.4	13.7														
85	6.53	6.28	5.70	5.43	4.56														
90	0.85	0.84	0.68	0.74	0.60														
95	0.23	0.24	0.24	0.23	0.19														
100	0.26	0.27	0.26	0.27	0.23														
105	0.33	0.33	0.31	0.30	0.29														
110	0.39	0.39	0.37	0.38	0.35														
115	0.46	0.47	0.44	0.45	0.43														
120	0.54	0.53	0.51	0.52	0.50														
125	0.61	0.62	0.60	0.59	0.57														
130	0.68	0.69	0.66	0.66	0.65														
135	0.75	0.76	0.73	0.74	0.72														
140	0.84	0.81	0.80	0.81	0.78														
145	0.89	0.88	0.86	0.87	0.86														
150	0.96	0.94	0.94	0.94	0.93														
155	1.00	0.99	0.98	0.99	1.00														
160	1.03	1.04	1.02	1.04	1.03														
165	1.07	1.08	1.07	1.08	1.08														
170	1.11	1.12	1.10	1.12	1.12														
175	1.12	1.13	1.12	1.13	1.14														
180	1.13	1.13	1.13	1.14	1.14														

C Range: 0 - 360DEG
 C Interval: 15.0DEG
 Test Speed: HIGH
 Temperature:25.0DEG
 Operators:mo fu mei
 Test Date:2015-09-16

γ Range: 0 - 180DEG
 γ Interval: 1.0DEG
 Test System:EVERFINE GO-2000B_V1 SYSTEM V2.0.275
 Humidity:65.0%
 Test Distance:7.000m [K=1.0000]
 Remarks: