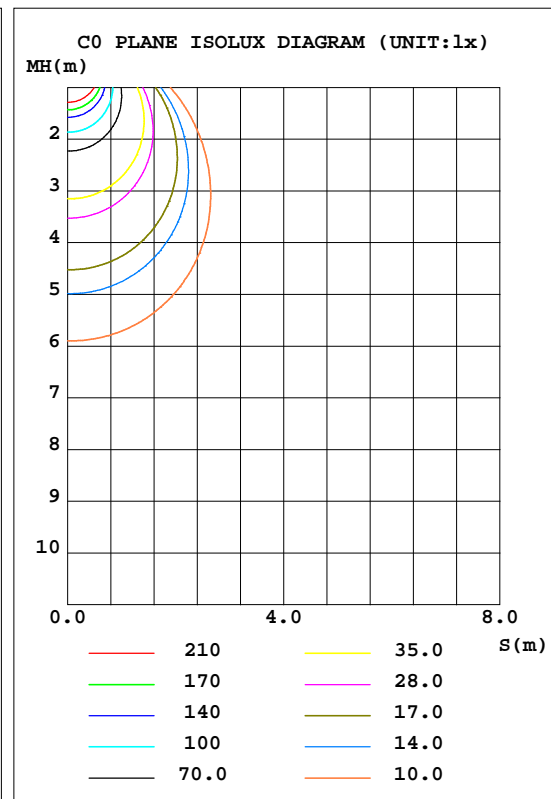
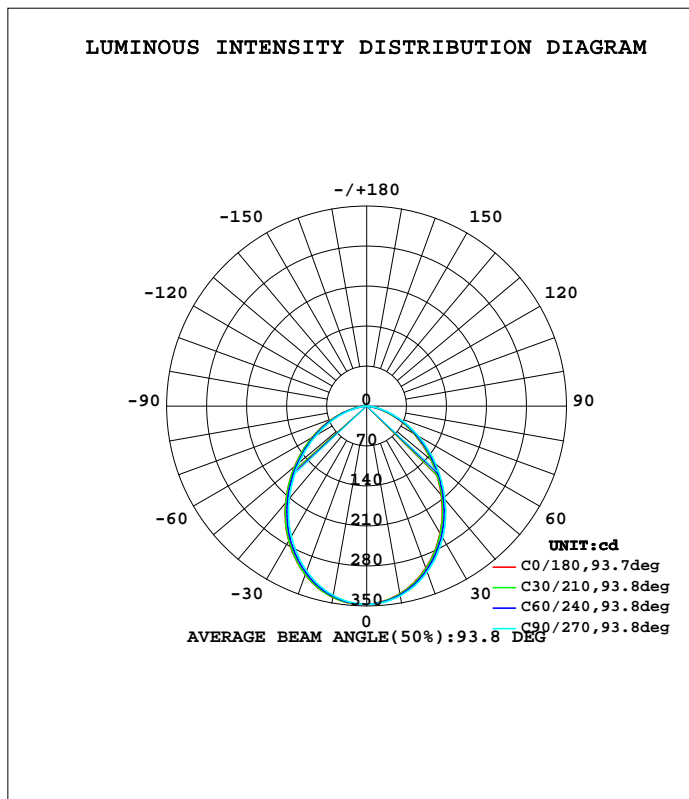


LUMINAIRE PHOTOMETRIC TEST REPORT

Test:U:240.6V I:0.0370A P:8.610W PF:0.9440 Lamp Flux:782.069x1 lm		
NAME: ID8W-CC	TYPE:8W	WEIGHT:
DIM.:	SPEC.:5700K	SERIAL No.:
MFR.:	SUR.:0.04	PROTECTION ANGLE:

DATA OF LAMP		PHOTOMETRIC DATA Eff: 90.83 lm/W			
MODEL	ID8W-CC	I <sub>max</sub> (cd)	347.2	S/MH(C0/180)	1.18
NOMINAL POWER(W)	8	LOR(%)	100.0	S/MH(C90/270)	1.15
RATED VOLTAGE(V)	240	TOTAL FLUX(lm)	782.07	η UP, DN(C0-180)	0.0, 50.2
NOMINAL FLUX(lm)	782.069	CIE CLASS	DIRECT	η UP, DN(C180-360)	0.0, 49.8
LAMPS INSIDE	1	η up(%)	0.0	CIBSE SHR NOM	1.25
TEST VOLTAGE(V)	240.6	η down(%)	100.0	CIBSE SHR MAX	1.30



C Range: 0 - 360DEG  
 C Interval: 30.0DEG  
 Test Speed: HIGH  
 Temperature:25.3DEG  
 Operators:DAMIN  
 Test Date:2018-07-05

γ Range: 0 - 90DEG  
 γ Interval: 1.0DEG  
 Test System:EVERFINE GO-2000A\_V1 SYSTEM V2.0.276  
 Humidity:65.0%  
 Test Distance:9.600m [K=1.0000]  
 Remarks:

ZONAL FLUX DIAGRAM

ZONAL FLUX DIAGRAM:

$\gamma$	C0	C45	C90	C135	C180	C225	C270	C315	$\gamma$	$\Phi$ zone	$\Phi$ total	\$lum,lamp
10	340.2	339.1	336.6	334.4	333.8	335.0	337.5	339.6	0- 10	32.65	32.65	4.17,4.17
20	314.3	312.3	307.6	303.5	302.3	304.6	309.1	313.0	10- 20	91.44	124.1	15.9,15.9
30	272.9	270.2	264.0	258.6	257.2	260.2	266.0	271.2	20- 30	132.5	256.6	32.8,32.8
40	221.0	217.9	210.9	204.9	203.3	206.8	213.4	219.1	30- 40	149.6	406.2	51.9,51.9
50	164.9	161.7	154.7	148.9	147.4	150.9	157.4	163.1	40- 50	142.0	548.2	70.1,70.1
60	110.8	107.7	101.3	96.12	94.86	98.03	104.0	109.2	50- 60	115.4	663.5	84.8,84.8
70	61.60	58.91	53.38	49.14	48.26	50.85	55.75	60.15	60- 70	77.31	740.8	94.7,94.7
80	18.41	18.58	15.04	12.05	9.796	12.80	16.12	19.01	70- 80	35.87	776.7	99.3,99.3
90	0	0	0	0	0	0	0	0	80- 90	5.360	782.1	100,100
100									90-100			
110									100-110			
120									110-120			
130									120-130			
140									130-140			
150									140-150			
160									150-160			
170									160-170			
180									170-180			
DEG	LUMINOUS INTENSITY:cd									UNIT:lm		

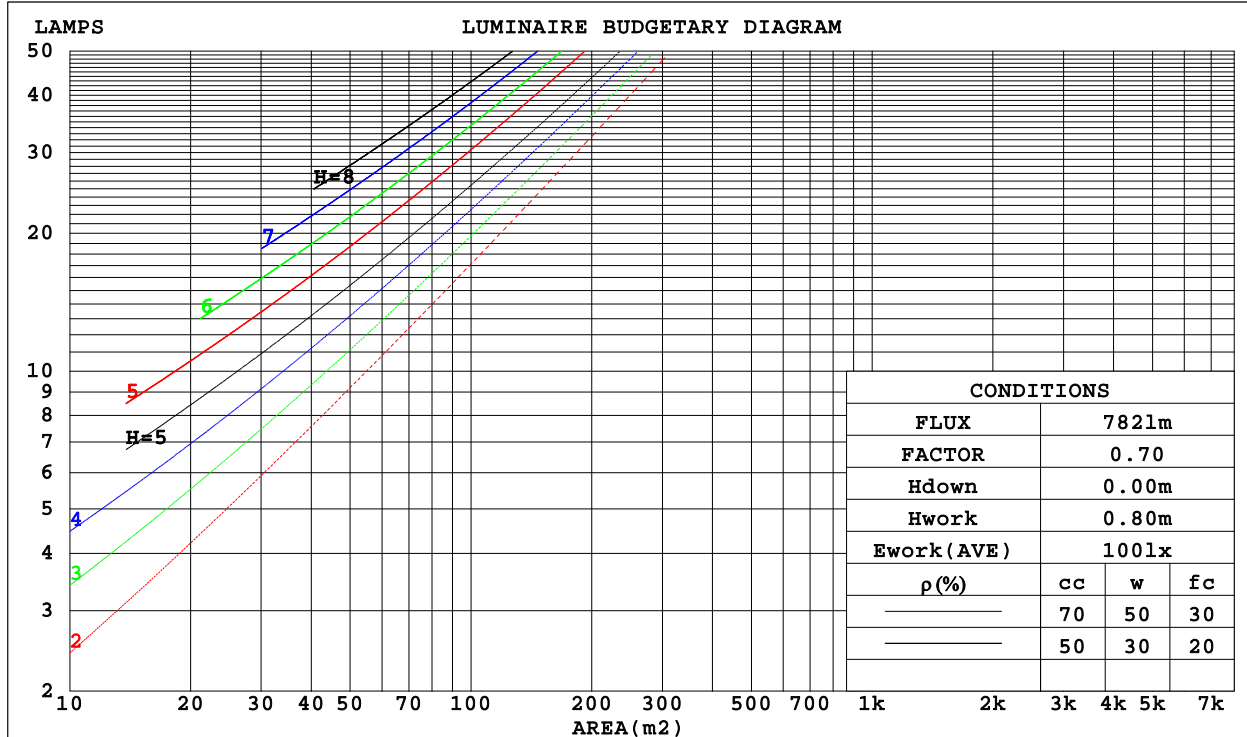
C Range: 0 - 360DEG  
 C Interval: 30.0DEG  
 Test Speed: HIGH  
 Temperature:25.3DEG  
 Operators:DAMIN  
 Test Date:2018-07-05

$\gamma$  Range: 0 - 90DEG  
 $\gamma$  Interval: 1.0DEG  
 Test System:EVERFINE GO-2000A\_V1 SYSTEM V2.0.276  
 Humidity:65.0%  
 Test Distance:9.600m [K=1.0000]  
 Remarks:

CU AND LUMINAIRE BUDGETARY ESTIMATE DIAGRAM

Test:U:240.6V I:0.0370A P:8.610W PF:0.9440 Lamp Flux:782.069x1 lm		
NAME: ID8W-CC	TYPE:8W	WEIGHT:
DIM.:	SPEC.:5700K	SERIAL No.:
MFR.:	SUR.:0.04	PROTECTION ANGLE:

$\rho_{cc}$	80%			70%			50%			30%			10%			0
$\rho_w$	50%	30%	10%	50%	30%	10%	50%	30%	10%	50%	30%	10%	50%	30%	10%	0
$\rho_{fc}$	20%			20%			20%			20%			20%			0
RCR	RCR:Room Cavity Ratio						Coefficients of Utilization(CU)									
0.0	1.19	1.19	1.19	1.16	1.16	1.16	1.11	1.11	1.11	1.06	1.06	1.06	1.02	1.02	1.02	1.00
1.0	1.06	1.02	.98	1.03	1.00	.97	.99	.96	.94	.95	.93	.91	.92	.90	.88	.86
2.0	.93	.87	.82	.91	.86	.81	.88	.83	.79	.85	.81	.77	.82	.78	.76	.73
3.0	.83	.75	.69	.81	.74	.69	.78	.72	.67	.76	.71	.66	.73	.69	.65	.63
4.0	.74	.66	.59	.73	.65	.59	.70	.64	.58	.68	.62	.57	.66	.61	.57	.55
5.0	.67	.58	.52	.65	.57	.51	.63	.56	.51	.61	.55	.50	.60	.54	.50	.48
6.0	.60	.52	.46	.59	.51	.45	.58	.50	.45	.56	.50	.45	.54	.49	.44	.42
7.0	.55	.46	.41	.54	.46	.40	.53	.45	.40	.51	.45	.40	.50	.44	.40	.38
8.0	.50	.42	.37	.50	.42	.36	.48	.41	.36	.47	.41	.36	.46	.40	.36	.34
9.0	.46	.38	.33	.46	.38	.33	.45	.38	.33	.44	.37	.33	.43	.37	.32	.31
10.0	.43	.35	.30	.42	.35	.30	.41	.35	.30	.40	.34	.30	.40	.34	.30	.28



C Range: 0 - 360DEG  
 C Interval: 30.0DEG  
 Test Speed: HIGH  
 Temperature:25.3DEG  
 Operators:DAMIN  
 Test Date:2018-07-05

$\gamma$  Range: 0 - 90DEG  
 $\gamma$  Interval: 1.0DEG  
 Test System:EVERFINE GO-2000A\_V1 SYSTEM V2.0.276  
 Humidity:65.0%  
 Test Distance:9.600m [K=1.0000]  
 Remarks:

WEC AND CCEC

Test:U:240.6V I:0.0370A P:8.610W PF:0.9440 Lamp Flux:782.069x1 lm		
NAME: ID8W-CC	TYPE:8W	WEIGHT:
DIM.:	SPEC.:5700K	SERIAL No.:
MFR.:	SUR.:0.04	PROTECTION ANGLE:

pcc	80%			70%			50%			30%			10%			0
pw	50%	30%	10%	50%	30%	10%	50%	30%	10%	50%	30%	10%	50%	30%	10%	0
pfc	20%			20%			20%			20%			20%			0
RCR	RCR:Room Cavity Ratio						Wall Exitance Coefficients(WEC)									
0.0																
1.0	.274	.156	.049	.267	.153	.048	.254	.146	.047	.242	.140	.045	.231	.134	.043	
2.0	.264	.145	.044	.258	.142	.044	.247	.137	.043	.236	.132	.041	.226	.128	.040	
3.0	.248	.132	.040	.243	.130	.039	.233	.126	.038	.223	.122	.038	.215	.119	.037	
4.0	.231	.120	.035	.227	.119	.035	.218	.116	.035	.210	.113	.034	.202	.110	.033	
5.0	.216	.110	.032	.212	.109	.032	.204	.106	.031	.196	.104	.031	.189	.101	.030	
6.0	.202	.101	.029	.198	.100	.029	.191	.098	.028	.184	.096	.028	.178	.094	.028	
7.0	.189	.093	.026	.185	.092	.026	.179	.091	.026	.173	.089	.026	.168	.087	.026	
8.0	.177	.087	.024	.174	.086	.024	.168	.084	.024	.163	.083	.024	.158	.081	.024	
9.0	.167	.081	.023	.164	.080	.022	.159	.079	.022	.154	.077	.022	.150	.076	.022	
10.0	.157	.075	.021	.155	.075	.021	.150	.074	.021	.146	.072	.021	.142	.071	.020	

pcc	80%			70%			50%			30%			10%			0
pw	50%	30%	10%	50%	30%	10%	50%	30%	10%	50%	30%	10%	50%	30%	10%	0
pfc	20%			20%			20%			20%			20%			0
RCR	RCR:Room Cavity Ratio						Ceiling Cavity Exitance Coefficients(CCEC)									
0.0	.190	.190	.190	.163	.163	.163	.111	.111	.111	.064	.064	.064	.020	.020	.020	
1.0	.178	.156	.137	.152	.134	.118	.104	.092	.082	.060	.053	.047	.019	.017	.015	
2.0	.169	.132	.101	.144	.114	.088	.099	.079	.061	.057	.046	.036	.018	.015	.012	
3.0	.160	.114	.077	.137	.098	.067	.094	.068	.047	.054	.040	.028	.018	.013	.009	
4.0	.152	.101	.061	.131	.087	.053	.090	.061	.037	.052	.035	.022	.017	.012	.007	
5.0	.145	.090	.049	.125	.078	.043	.086	.054	.030	.050	.032	.018	.016	.010	.006	
6.0	.138	.082	.041	.119	.071	.036	.082	.049	.025	.048	.029	.015	.015	.010	.005	
7.0	.132	.075	.035	.113	.065	.030	.078	.045	.021	.045	.027	.013	.015	.009	.004	
8.0	.125	.069	.030	.108	.060	.026	.075	.042	.018	.043	.025	.011	.014	.008	.004	
9.0	.120	.064	.026	.103	.055	.023	.071	.039	.016	.042	.023	.010	.013	.008	.003	
10.0	.114	.059	.023	.098	.052	.020	.068	.036	.014	.040	.021	.009	.013	.007	.003	

C Range: 0 - 360DEG  
 C Interval: 30.0DEG  
 Test Speed: HIGH  
 Temperature:25.3DEG  
 Operators:DAMIN  
 Test Date:2018-07-05

γ Range: 0 - 90DEG  
 γ Interval: 1.0DEG  
 Test System:EVERFINE GO-2000A\_V1 SYSTEM V2.0.276  
 Humidity:65.0%  
 Test Distance:9.600m [K=1.0000]  
 Remarks:

Uncorrected UGR Table

Test:U:240.6V I:0.0370A P:8.610W PF:0.9440 Lamp Flux:782.069x1 lm										
NAME: ID8W-CC					TYPE:8W			WEIGHT:		
DIM.:					SPEC.:5700K			SERIAL No.:		
MFR.:					SUR.:0.04			PROTECTION ANGLE:		
ceiling/cavity	0.7	0.7	0.5	0.5	0.3	0.7	0.7	0.5	0.5	0.3
walls	0.5	0.3	0.5	0.3	0.3	0.5	0.3	0.5	0.3	0.3
working plane	0.2	0.2	0.2	0.2	0.2	0.2	0.2	0.2	0.2	0.2
Room dimensions	Viewed crosswise					Viewed endwise				
x = 2H y = 2H	26.2	27.6	26.5	27.8	28.0	25.9	27.3	26.1	27.5	27.7
3H	27.4	28.7	27.7	28.9	29.2	26.9	28.2	27.2	28.5	28.7
4H	27.8	29.0	28.1	29.3	29.5	27.3	28.5	27.6	28.7	29.0
6H	28.0	29.2	28.3	29.4	29.7	27.4	28.6	27.7	28.8	29.1
8H	28.0	29.1	28.3	29.4	29.7	27.4	28.5	27.7	28.8	29.1
12H	28.0	29.1	28.3	29.4	29.7	27.4	28.4	27.7	28.7	29.0
4H 2H	26.7	27.9	27.0	28.2	28.4	26.4	27.6	26.7	27.9	28.1
3H	28.0	29.1	28.4	29.4	29.7	27.6	28.7	28.0	29.0	29.3
4H	28.5	29.5	28.9	29.8	30.2	28.1	29.0	28.4	29.4	29.7
6H	28.8	29.7	29.2	30.0	30.4	28.3	29.1	28.7	29.5	29.9
8H	28.9	29.7	29.3	30.0	30.4	28.3	29.1	28.7	29.5	29.9
12H	28.9	29.6	29.3	30.0	30.4	28.3	29.0	28.7	29.4	29.8
8H 4H	28.7	29.5	29.1	29.8	30.2	28.2	29.0	28.6	29.4	29.8
6H	29.1	29.7	29.5	30.1	30.5	28.5	29.2	29.0	29.6	30.0
8H	29.1	29.7	29.6	30.2	30.6	28.6	29.2	29.1	29.6	30.1
12H	29.2	29.7	29.6	30.1	30.6	28.6	29.1	29.1	29.6	30.0
12H 4H	28.7	29.4	29.1	29.8	30.2	28.2	29.0	28.6	29.3	29.7
6H	29.1	29.6	29.5	30.1	30.5	28.6	29.1	29.0	29.6	30.0
8H	29.2	29.7	29.6	30.1	30.6	28.6	29.1	29.1	29.6	30.1
Variations with the observer position at spacings:										
S = 1.0H	+ 0.2 / - 0.3					+ 0.3 / - 0.4				
1.5H	+ 0.1 / - 0.3					+ 0.2 / - 0.4				
2.0H	+ 0.4 / - 0.4					+ 0.4 / - 0.5				

CIE Pub.117 Corrected 782.1 lm Total Lamp Luminous Flux.(8log(F/F0) = -0.9)

C Range: 0 - 360DEG  
 C Interval: 30.0DEG  
 Test Speed: HIGH  
 Temperature:25.3DEG  
 Operators:DAMIN  
 Test Date:2018-07-05

γ Range: 0 - 90DEG  
 γ Interval: 1.0DEG  
 Test System:EVERFINE GO-2000A\_V1 SYSTEM V2.0.276  
 Humidity:65.0%  
 Test Distance:9.600m [K=1.0000]  
 Remarks:

**UTILIZATION FACTORS TABLE**

Test:U:240.6V I:0.0370A P:8.610W PF:0.9440 Lamp Flux:782.069x1 lm		
NAME: ID8W-CC	TYPE:8W	WEIGHT:
DIM.:	SPEC.:5700K	SERIAL No.:
MFR.:	SUR.:0.04	PROTECTION ANGLE:

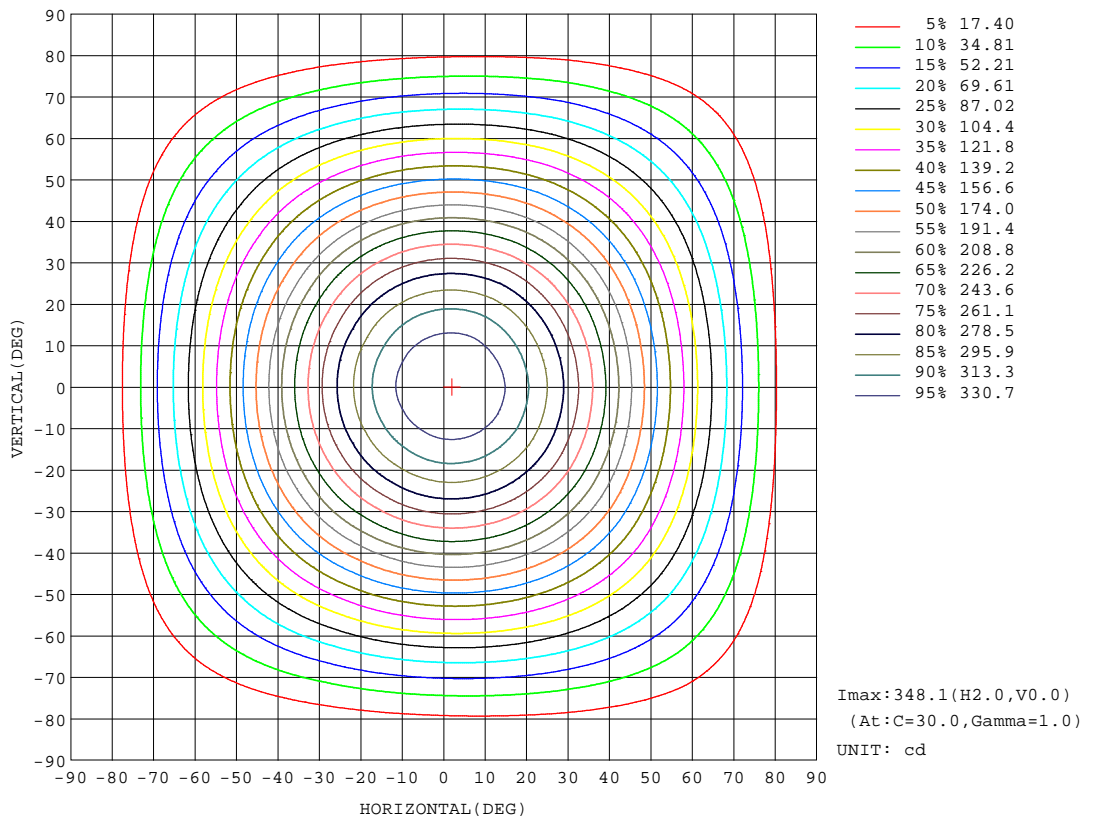
REFLECTANCE										
Ceiling	0.8	0.8	0.8	0.7	0.7	0.7	0.5	0.5	0.5	0
Walls	0.7	0.5	0.3	0.7	0.5	0.3	0.7	0.5	0.3	0
Working plane	0.2	0.2	0.2	0.2	0.2	0.2	0.2	0.2	0.2	0
ROOM INDEX	UTILIZATION FACTORS(PERCENT) k(RI) x RCR = 5									
k = 0.60	62	51	44	61	51	44	60	50	44	38
0.80	72	61	54	71	61	54	69	60	54	47
1.00	80	70	63	79	69	63	77	70	62	56
1.25	87	77	71	85	77	70	83	75	70	63
1.50	92	83	76	90	82	76	87	80	75	68
2.00	98	90	84	96	89	84	93	87	82	75
2.50	101	94	89	99	93	88	96	90	86	78
3.00	104	98	93	102	97	92	98	94	90	82
4.00	108	103	99	106	101	97	102	98	95	86
5.00	110	106	102	108	104	101	103	100	98	89
ROOM INDEX	UF(total)									Direct
According to DIN EN 13032-2 2004			Suspended				SHRNOM = 1.25			

C Range: 0 - 360DEG  
 C Interval: 30.0DEG  
 Test Speed: HIGH  
 Temperature:25.3DEG  
 Operators:DAMIN  
 Test Date:2018-07-05

γ Range: 0 - 90DEG  
 γ Interval: 1.0DEG  
 Test System:EVERFINE GO-2000A\_V1 SYSTEM V2.0.276  
 Humidity:65.0%  
 Test Distance:9.600m [K=1.0000]  
 Remarks:

ISOCANDELA DIAGRAM

Test:U:240.6V I:0.0370A P:8.610W PF:0.9440 Lamp Flux:782.069x1 lm		
NAME: ID8W-CC	TYPE:8W	WEIGHT:
DIM.:	SPEC.:5700K	SERIAL No.:
MFR.:	SUR.:0.04	PROTECTION ANGLE:



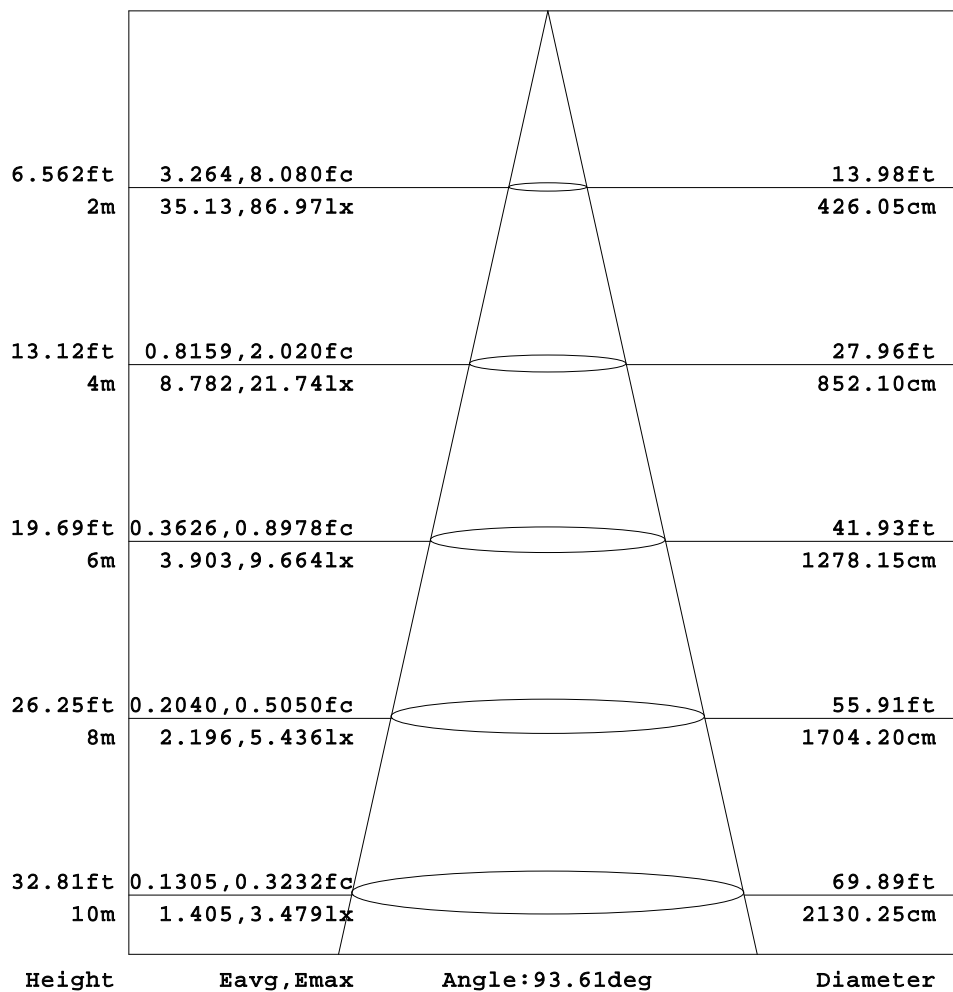
C Range: 0 - 360DEG  
 C Interval: 30.0DEG  
 Test Speed: HIGH  
 Temperature:25.3DEG  
 Operators:DAMIN  
 Test Date:2018-07-05

γ Range: 0 - 90DEG  
 γ Interval: 1.0DEG  
 Test System:EVERFINE GO-2000A\_V1 SYSTEM V2.0.276  
 Humidity:65.0%  
 Test Distance:9.600m [K=1.0000]  
 Remarks:

AAI Figure

Test:U:240.6V I:0.0370A P:8.610W PF:0.9440 Lamp Flux:782.069x1 lm		
NAME: ID8W-CC	TYPE:8W	WEIGHT:
DIM.:	SPEC.:5700K	SERIAL No.:
MFR.:	SUR.:0.04	PROTECTION ANGLE:

Flux out:507.7 lm



Note:The Curves indicate the illuminated area and the average illumination when the luminaire is at different distance.

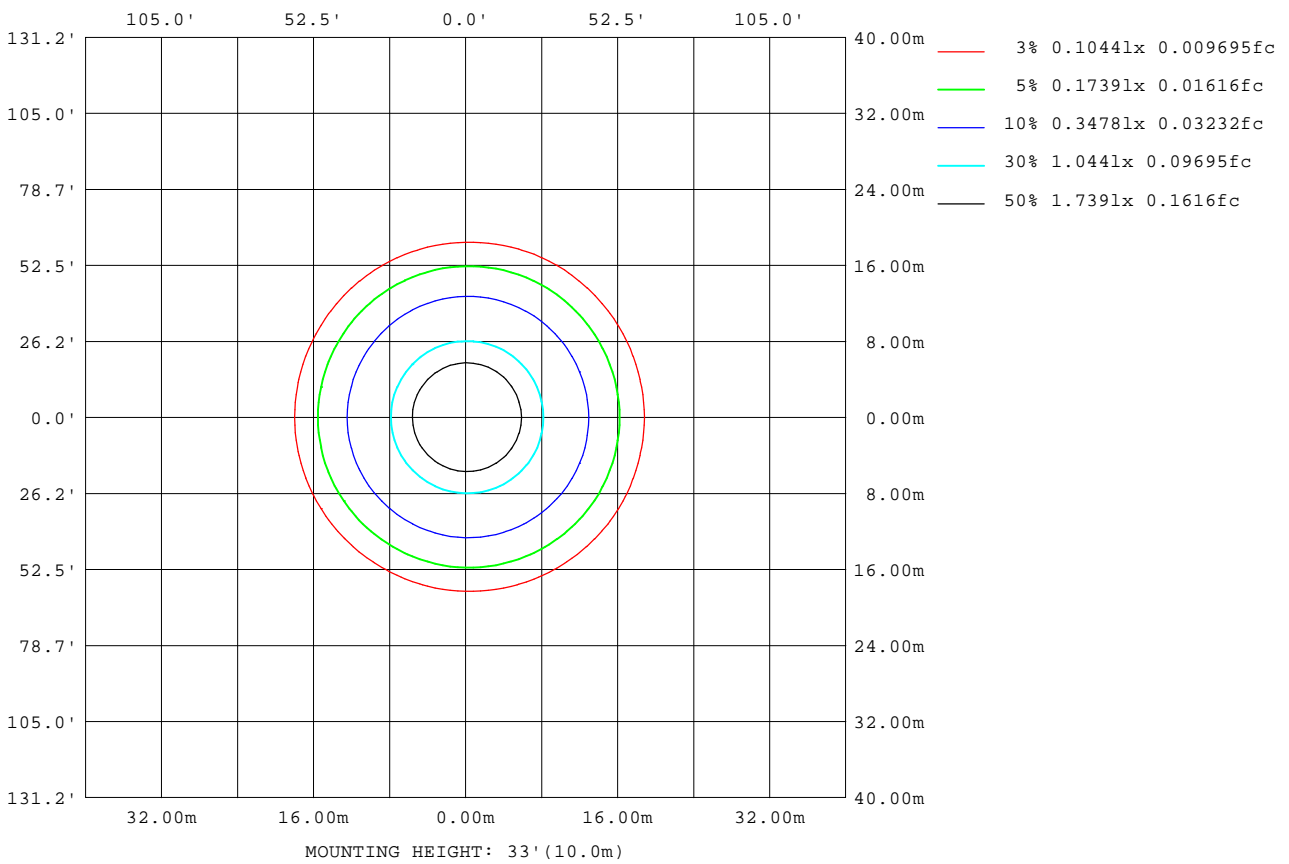
C Range: 0 - 360DEG  
 C Interval: 30.0DEG  
 Test Speed: HIGH  
 Temperature:25.3DEG  
 Operators:DAMIN  
 Test Date:2018-07-05

γ Range: 0 - 90DEG  
 γ Interval: 1.0DEG  
 Test System:EVERFINE GO-2000A\_V1 SYSTEM V2.0.276  
 Humidity:65.0%  
 Test Distance:9.600m [K=1.0000]  
 Remarks:



ISOLUX DIAGRAM

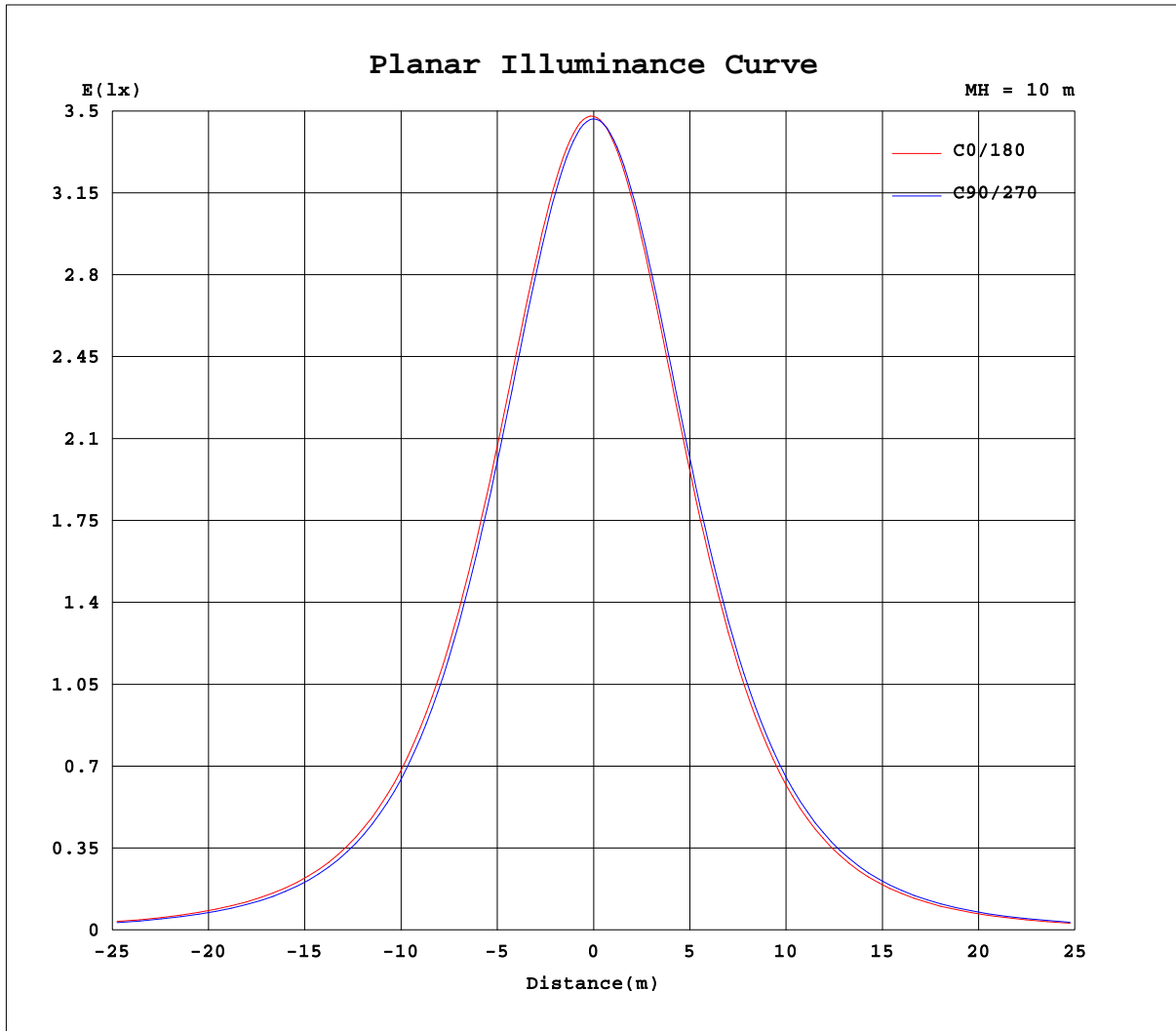
Test:U:240.6V I:0.0370A P:8.610W PF:0.9440 Lamp Flux:782.069x1 lm		
NAME: ID8W-CC	TYPE:8W	WEIGHT:
DIM.:	SPEC.:5700K	SERIAL No.:
MFR.:	SUR.:0.04	PROTECTION ANGLE:



C Range: 0 - 360DEG  
 C Interval: 30.0DEG  
 Test Speed: HIGH  
 Temperature:25.3DEG  
 Operators:DAMIN  
 Test Date:2018-07-05

γ Range: 0 - 90DEG  
 γ Interval: 1.0DEG  
 Test System:EVERFINE GO-2000A\_V1 SYSTEM V2.0.276  
 Humidity:65.0%  
 Test Distance:9.600m [K=1.0000]  
 Remarks:

Planar Illuminance Curve



C Range: 0 - 360DEG  
 C Interval: 30.0DEG  
 Test Speed: HIGH  
 Temperature: 25.3DEG  
 Operators: DAMIN  
 Test Date: 2018-07-05

$\gamma$  Range: 0 - 90DEG  
 $\gamma$  Interval: 1.0DEG  
 Test System: EVERFINE GO-2000A\_V1 SYSTEM V2.0.276  
 Humidity: 65.0%  
 Test Distance: 9.600m [K=1.0000]  
 Remarks:

