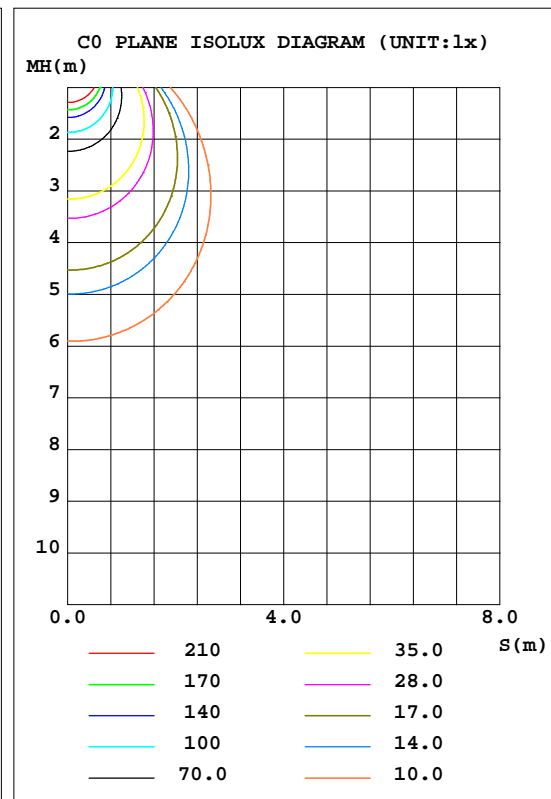
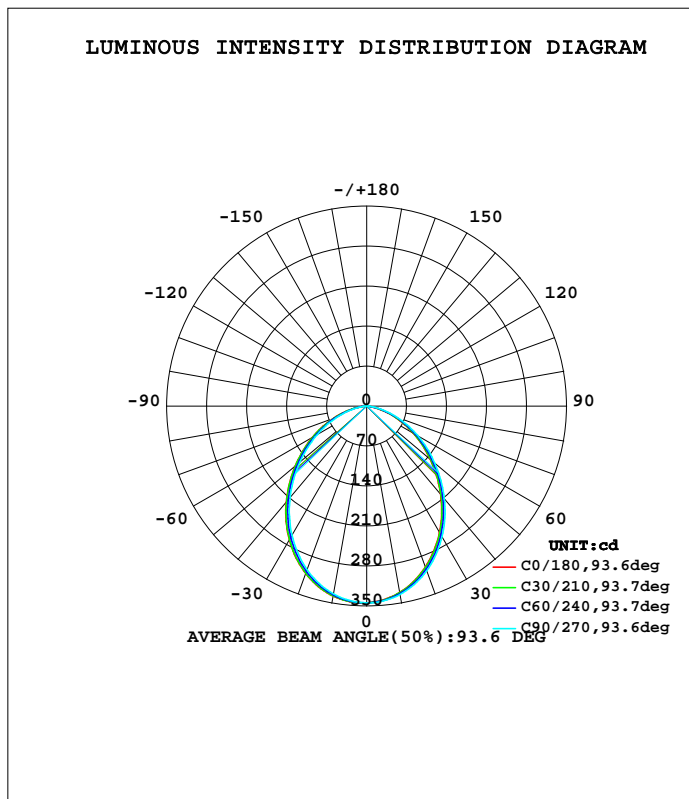


LUMINAIRE PHOTOMETRIC TEST REPORT

Test:U:240.6V I:0.0380A P:8.700W PF:0.9440 Lamp Flux:774.517x1 lm		
NAME: ID8W-CC	TYPE:8W	WEIGHT:
DIM.:	SPEC.:3000K	SERIAL No.:
MFR.:	SUR.:0.04	PROTECTION ANGLE:

DATA OF LAMP		PHOTOMETRIC DATA Eff: 89.02 lm/W			
MODEL	ID8W-CC	I _{max} (cd)	344.7	S/MH(C0/180)	1.18
NOMINAL POWER(W)	8	LOR(%)	100.0	S/MH(C90/270)	1.15
RATED VOLTAGE(V)	240	TOTAL FLUX(lm)	774.52	η UP, DN(C0-180)	0.0, 50.2
NOMINAL FLUX(lm)	774.517	CIE CLASS	DIRECT	η UP, DN(C180-360)	0.0, 49.8
LAMPS INSIDE	1	η up(%)	0.0	CIBSE SHR NOM	1.25
TEST VOLTAGE(V)	240.6	η down(%)	100.0	CIBSE SHR MAX	1.30



C Range: 0 - 360DEG
 C Interval: 30.0DEG
 Test Speed: HIGH
 Temperature:25.3DEG
 Operators:DAMIN
 Test Date:2018-07-05

γ Range: 0 - 90DEG
 γ Interval: 1.0DEG
 Test System:EVERFINE GO-2000A_V1 SYSTEM V2.0.276
 Humidity:65.0%
 Test Distance:9.600m [K=1.0000]
 Remarks:

ZONAL FLUX DIAGRAM

ZONAL FLUX DIAGRAM:

γ	C0	C45	C90	C135	C180	C225	C270	C315	γ	Φ zone	Φ total	\$lum,lamp
10	337.8	336.5	334.0	331.8	331.4	332.6	335.1	337.2	0- 10	32.41	32.41	4.18,4.18
20	312.1	309.7	305.1	301.0	300.2	302.5	307.0	310.9	10- 20	90.76	123.2	15.9,15.9
30	270.9	267.9	261.6	256.2	255.1	258.3	264.1	269.3	20- 30	131.5	254.7	32.9,32.9
40	219.4	216.0	208.8	202.6	201.4	205.0	211.7	217.5	30- 40	148.3	403.0	52,52
50	163.7	160.3	153.0	147.1	145.8	149.3	156.0	161.8	40- 50	140.6	543.6	70.2,70.2
60	110.0	106.7	100.1	94.70	93.53	96.74	102.9	108.2	50- 60	114.1	657.8	84.9,84.9
70	61.08	58.27	52.60	48.06	47.18	49.83	54.92	59.51	60- 70	76.33	734.1	94.8,94.8
80	18.03	18.26	14.63	11.54	9.349	12.34	15.70	18.61	70- 80	35.20	769.3	99.3,99.3
90	0	0	0	0	0	0	0	0	80- 90	5.203	774.5	100,100
100									90-100			
110									100-110			
120									110-120			
130									120-130			
140									130-140			
150									140-150			
160									150-160			
170									160-170			
180									170-180			
DEG	LUMINOUS INTENSITY:cd									UNIT:lm		

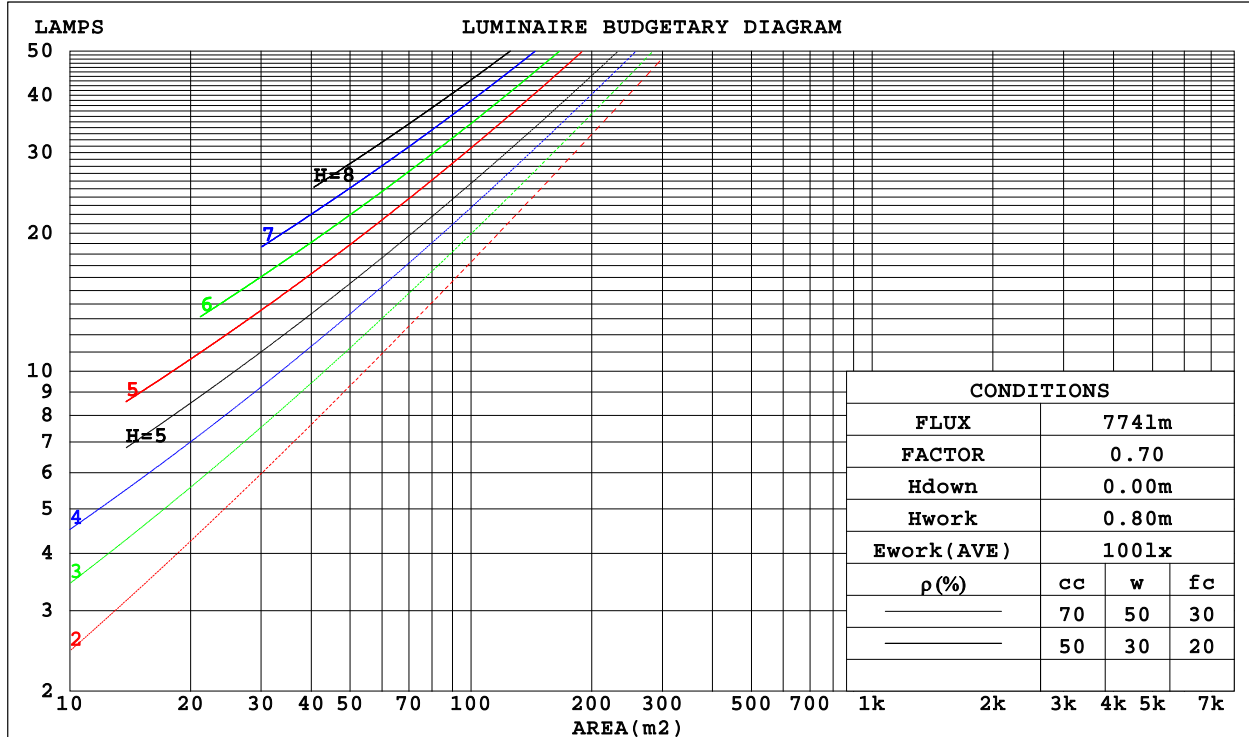
C Range: 0 - 360DEG
 C Interval: 30.0DEG
 Test Speed: HIGH
 Temperature:25.3DEG
 Operators:DAMIN
 Test Date:2018-07-05

γ Range: 0 - 90DEG
 γ Interval: 1.0DEG
 Test System:EVERFINE GO-2000A_V1 SYSTEM V2.0.276
 Humidity:65.0%
 Test Distance:9.600m [K=1.0000]
 Remarks:

CU AND LUMINAIRE BUDGETARY ESTIMATE DIAGRAM

Test:U:240.6V I:0.0380A P:8.700W PF:0.9440 Lamp Flux:774.517x1 lm		
NAME: ID8W-CC	TYPE:8W	WEIGHT:
DIM.:	SPEC.:3000K	SERIAL No.:
MFR.:	SUR.:0.04	PROTECTION ANGLE:

ρ_{cc}	80%			70%			50%			30%			10%			0
ρ_w	50%	30%	10%	50%	30%	10%	50%	30%	10%	50%	30%	10%	50%	30%	10%	0
ρ_{fc}	20%			20%			20%			20%			20%			0
RCR	RCR:Room Cavity Ratio						Coefficients of Utilization(CU)									
0.0	1.19	1.19	1.19	1.16	1.16	1.16	1.11	1.11	1.11	1.06	1.06	1.06	1.02	1.02	1.02	.00
1.0	1.06	1.02	.99	1.03	1.00	.97	.99	.96	.94	.95	.93	.91	.92	.90	.88	.86
2.0	.93	.87	.82	.91	.86	.81	.88	.83	.79	.85	.81	.77	.82	.79	.76	.74
3.0	.83	.75	.69	.81	.74	.69	.78	.72	.67	.76	.71	.66	.73	.69	.65	.63
4.0	.74	.66	.59	.73	.65	.59	.70	.64	.58	.68	.62	.58	.66	.61	.57	.55
5.0	.67	.58	.52	.65	.58	.52	.63	.56	.51	.61	.55	.50	.60	.54	.50	.48
6.0	.60	.52	.46	.59	.51	.45	.58	.50	.45	.56	.50	.45	.54	.49	.44	.42
7.0	.55	.47	.41	.54	.46	.41	.53	.45	.40	.51	.45	.40	.50	.44	.40	.38
8.0	.50	.42	.37	.50	.42	.36	.48	.41	.36	.47	.41	.36	.46	.40	.36	.34
9.0	.46	.38	.33	.46	.38	.33	.45	.38	.33	.44	.37	.33	.43	.37	.33	.31
10.0	.43	.35	.30	.42	.35	.30	.41	.35	.30	.40	.34	.30	.40	.34	.30	.28



C Range: 0 - 360DEG
 C Interval: 30.0DEG
 Test Speed: HIGH
 Temperature:25.3DEG
 Operators:DAMIN
 Test Date:2018-07-05

γ Range: 0 - 90DEG
 γ Interval: 1.0DEG
 Test System:EVERFINE GO-2000A_V1 SYSTEM V2.0.276
 Humidity:65.0%
 Test Distance:9.600m [K=1.0000]
 Remarks:

WEC AND CCEC

Test:U:240.6V I:0.0380A P:8.700W PF:0.9440 Lamp Flux:774.517x1 lm		
NAME: ID8W-CC	TYPE:8W	WEIGHT:
DIM.:	SPEC.:3000K	SERIAL No.:
MFR.:	SUR.:0.04	PROTECTION ANGLE:

pcc	80%			70%			50%			30%			10%			0
pw	50%	30%	10%	50%	30%	10%	50%	30%	10%	50%	30%	10%	50%	30%	10%	0
pfc	20%			20%			20%			20%			20%			0
RCR	RCR:Room Cavity Ratio						Wall Exitance Coefficients(WEC)									
0.0																
1.0	.274	.156	.049	.267	.152	.048	.254	.146	.047	.242	.140	.045	.231	.134	.043	
2.0	.264	.145	.044	.258	.142	.044	.246	.137	.043	.236	.132	.041	.226	.128	.040	
3.0	.248	.132	.040	.242	.130	.039	.232	.126	.038	.223	.122	.037	.214	.119	.037	
4.0	.231	.120	.035	.227	.119	.035	.218	.115	.034	.209	.112	.034	.202	.110	.033	
5.0	.216	.110	.032	.211	.109	.032	.204	.106	.031	.196	.104	.031	.189	.101	.030	
6.0	.201	.101	.029	.198	.100	.029	.191	.098	.028	.184	.096	.028	.178	.094	.028	
7.0	.189	.093	.026	.185	.092	.026	.179	.090	.026	.173	.089	.026	.167	.087	.026	
8.0	.177	.086	.024	.174	.086	.024	.168	.084	.024	.163	.083	.024	.158	.081	.024	
9.0	.166	.081	.022	.164	.080	.022	.159	.079	.022	.154	.077	.022	.149	.076	.022	
10.0	.157	.075	.021	.155	.075	.021	.150	.074	.021	.146	.072	.021	.142	.071	.020	

pcc	80%			70%			50%			30%			10%			0
pw	50%	30%	10%	50%	30%	10%	50%	30%	10%	50%	30%	10%	50%	30%	10%	0
pfc	20%			20%			20%			20%			20%			0
RCR	RCR:Room Cavity Ratio						Ceiling Cavity Exitance Coefficients(CCEC)									
0.0	.190	.190	.190	.163	.163	.163	.111	.111	.111	.064	.064	.064	.020	.020	.020	
1.0	.178	.156	.137	.152	.134	.118	.104	.092	.082	.060	.053	.047	.019	.017	.015	
2.0	.169	.132	.101	.144	.114	.088	.099	.079	.061	.057	.046	.036	.018	.015	.012	
3.0	.160	.114	.077	.137	.098	.067	.094	.068	.047	.054	.040	.028	.017	.013	.009	
4.0	.152	.101	.061	.131	.087	.053	.090	.061	.037	.052	.035	.022	.017	.012	.007	
5.0	.145	.090	.049	.125	.078	.043	.086	.054	.030	.050	.032	.018	.016	.010	.006	
6.0	.138	.082	.041	.119	.071	.036	.082	.049	.025	.048	.029	.015	.015	.010	.005	
7.0	.132	.075	.035	.113	.065	.030	.078	.045	.021	.045	.027	.013	.015	.009	.004	
8.0	.125	.069	.030	.108	.060	.026	.075	.042	.018	.043	.025	.011	.014	.008	.004	
9.0	.120	.064	.026	.103	.055	.023	.071	.039	.016	.042	.023	.010	.013	.008	.003	
10.0	.114	.059	.023	.098	.052	.020	.068	.036	.014	.040	.021	.009	.013	.007	.003	

C Range: 0 - 360DEG
 C Interval: 30.0DEG
 Test Speed: HIGH
 Temperature:25.3DEG
 Operators:DAMIN
 Test Date:2018-07-05

γ Range: 0 - 90DEG
 γ Interval: 1.0DEG
 Test System:EVERFINE GO-2000A_V1 SYSTEM V2.0.276
 Humidity:65.0%
 Test Distance:9.600m [K=1.0000]
 Remarks:

Uncorrected UGR Table

Test:U:240.6V I:0.0380A P:8.700W PF:0.9440 Lamp Flux:774.517x1 lm										
NAME: ID8W-CC					TYPE:8W			WEIGHT:		
DIM.:					SPEC.:3000K			SERIAL No.:		
MFR.:					SUR.:0.04			PROTECTION ANGLE:		
ceiling/cavity	0.7	0.7	0.5	0.5	0.3	0.7	0.7	0.5	0.5	0.3
walls	0.5	0.3	0.5	0.3	0.3	0.5	0.3	0.5	0.3	0.3
working plane	0.2	0.2	0.2	0.2	0.2	0.2	0.2	0.2	0.2	0.2
Room dimensions	Viewed crosswise					Viewed endwise				
x = 2H y = 2H	26.3	27.7	26.5	27.9	28.1	25.8	27.3	26.1	27.5	27.7
3H	27.4	28.7	27.7	29.0	29.2	26.9	28.2	27.2	28.4	28.7
4H	27.8	29.1	28.1	29.3	29.6	27.2	28.4	27.5	28.7	28.9
6H	28.0	29.2	28.3	29.5	29.7	27.3	28.5	27.7	28.8	29.0
8H	28.0	29.2	28.4	29.4	29.7	27.3	28.5	27.7	28.7	29.0
12H	28.0	29.1	28.4	29.4	29.7	27.3	28.4	27.7	28.7	29.0
4H 2H	26.7	27.9	27.0	28.2	28.4	26.4	27.6	26.7	27.9	28.1
3H	28.0	29.1	28.4	29.4	29.7	27.6	28.7	27.9	29.0	29.3
4H	28.6	29.5	28.9	29.9	30.2	28.0	29.0	28.4	29.3	29.6
6H	28.8	29.7	29.2	30.1	30.4	28.2	29.1	28.6	29.4	29.8
8H	28.9	29.7	29.3	30.1	30.4	28.2	29.1	28.7	29.4	29.8
12H	28.9	29.6	29.3	30.0	30.4	28.2	29.0	28.7	29.3	29.8
8H 4H	28.7	29.5	29.1	29.9	30.2	28.2	29.0	28.6	29.4	29.7
6H	29.1	29.7	29.5	30.1	30.6	28.5	29.2	28.9	29.6	30.0
8H	29.2	29.7	29.6	30.2	30.6	28.5	29.1	29.0	29.6	30.0
12H	29.2	29.7	29.6	30.1	30.6	28.6	29.1	29.0	29.5	30.0
12H 4H	28.7	29.4	29.1	29.8	30.2	28.2	28.9	28.6	29.3	29.7
6H	29.1	29.7	29.5	30.1	30.5	28.5	29.1	29.0	29.5	30.0
8H	29.2	29.7	29.6	30.1	30.6	28.6	29.1	29.1	29.5	30.0
Variations with the observer position at spacings:										
S = 1.0H	+ 0.2 / - 0.3					+ 0.3 / - 0.4				
1.5H	+ 0.1 / - 0.3					+ 0.2 / - 0.4				
2.0H	+ 0.4 / - 0.4					+ 0.4 / - 0.5				

CIE Pub.117 Corrected 774.5 lm Total Lamp Luminous Flux.(8log(F/F0) = -0.9)

C Range: 0 - 360DEG
 C Interval: 30.0DEG
 Test Speed: HIGH
 Temperature:25.3DEG
 Operators:DAMIN
 Test Date:2018-07-05

γ Range: 0 - 90DEG
 γ Interval: 1.0DEG
 Test System:EVERFINE GO-2000A_V1 SYSTEM V2.0.276
 Humidity:65.0%
 Test Distance:9.600m [K=1.0000]
 Remarks:

UTILIZATION FACTORS TABLE

Test:U:240.6V I:0.0380A P:8.700W PF:0.9440 Lamp Flux:774.517x1 lm		
NAME: ID8W-CC	TYPE:8W	WEIGHT:
DIM.:	SPEC.:3000K	SERIAL No.:
MFR.:	SUR.:0.04	PROTECTION ANGLE:

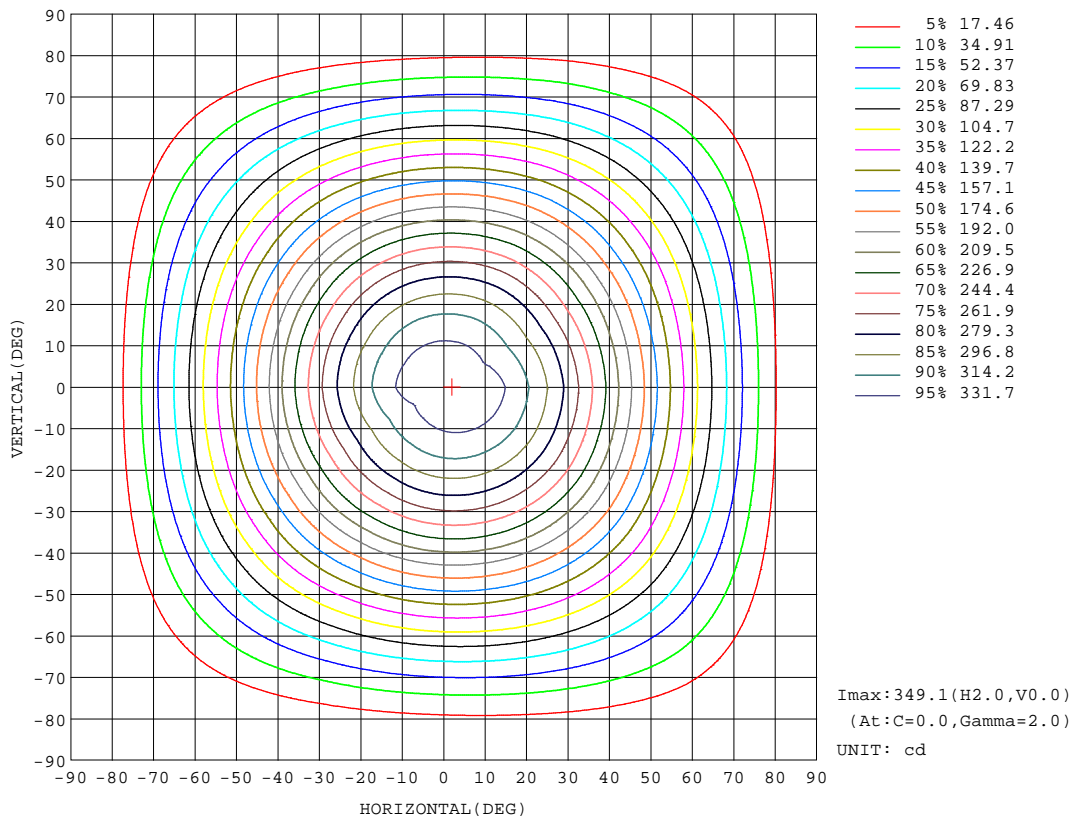
REFLECTANCE										
Ceiling	0.8	0.8	0.8	0.7	0.7	0.7	0.5	0.5	0.5	0
Walls	0.7	0.5	0.3	0.7	0.5	0.3	0.7	0.5	0.3	0
Working plane	0.2	0.2	0.2	0.2	0.2	0.2	0.2	0.2	0.2	0
ROOM INDEX	UTILIZATION FACTORS(PERCENT) k(RI) x RCR = 5									
k = 0.60	62	51	44	61	51	44	60	50	44	38
0.80	72	61	54	71	61	54	69	60	54	47
1.00	80	70	63	79	69	63	77	70	62	56
1.25	87	77	71	85	77	70	83	75	70	63
1.50	92	83	76	90	82	76	87	80	75	68
2.00	98	90	85	96	89	84	93	87	82	75
2.50	101	94	89	99	93	88	96	91	86	79
3.00	104	98	93	102	97	92	98	94	90	82
4.00	108	103	99	106	101	98	102	98	95	86
5.00	110	106	102	108	104	101	103	100	98	89
ROOM INDEX	UF(total)									Direct
According to DIN EN 13032-2 2004			Suspended				SHRNOM = 1.25			

C Range: 0 - 360DEG
 C Interval: 30.0DEG
 Test Speed: HIGH
 Temperature:25.3DEG
 Operators:DAMIN
 Test Date:2018-07-05

γ Range: 0 - 90DEG
 γ Interval: 1.0DEG
 Test System:EVERFINE GO-2000A_V1 SYSTEM V2.0.276
 Humidity:65.0%
 Test Distance:9.600m [K=1.0000]
 Remarks:

ISOCANDELA DIAGRAM

Test:U:240.6V I:0.0380A P:8.700W PF:0.9440 Lamp Flux:774.517x1 lm		
NAME: ID8W-CC	TYPE:8W	WEIGHT:
DIM.:	SPEC.:3000K	SERIAL No.:
MFR.:	SUR.:0.04	PROTECTION ANGLE:



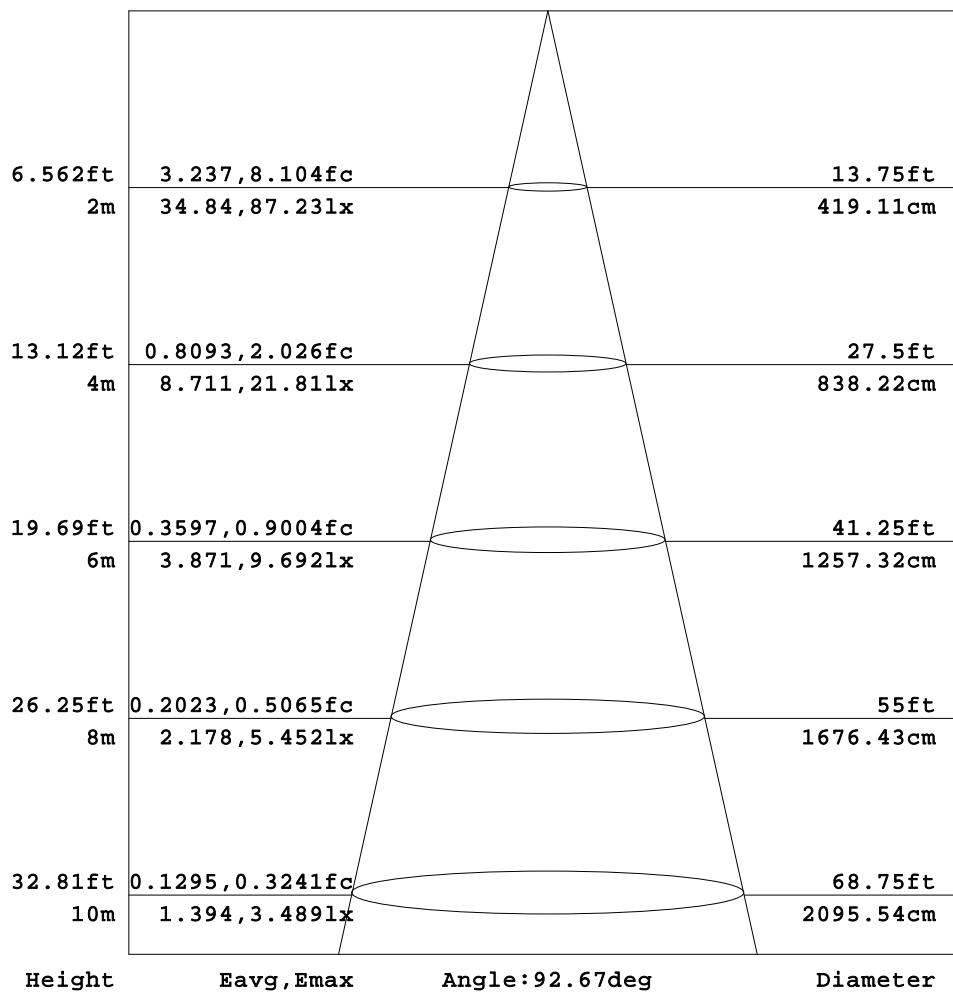
C Range: 0 - 360DEG
 C Interval: 30.0DEG
 Test Speed: HIGH
 Temperature:25.3DEG
 Operators:DAMIN
 Test Date:2018-07-05

γ Range: 0 - 90DEG
 γ Interval: 1.0DEG
 Test System:EVERFINE GO-2000A_V1 SYSTEM V2.0.276
 Humidity:65.0%
 Test Distance:9.600m [K=1.0000]
 Remarks:

AAI Figure

Test:U:240.6V I:0.0380A P:8.700W PF:0.9440 Lamp Flux:774.517x1 lm		
NAME: ID8W-CC	TYPE:8W	WEIGHT:
DIM.:	SPEC.:3000K	SERIAL No.:
MFR.:	SUR.:0.04	PROTECTION ANGLE:

Flux out:503.5 lm



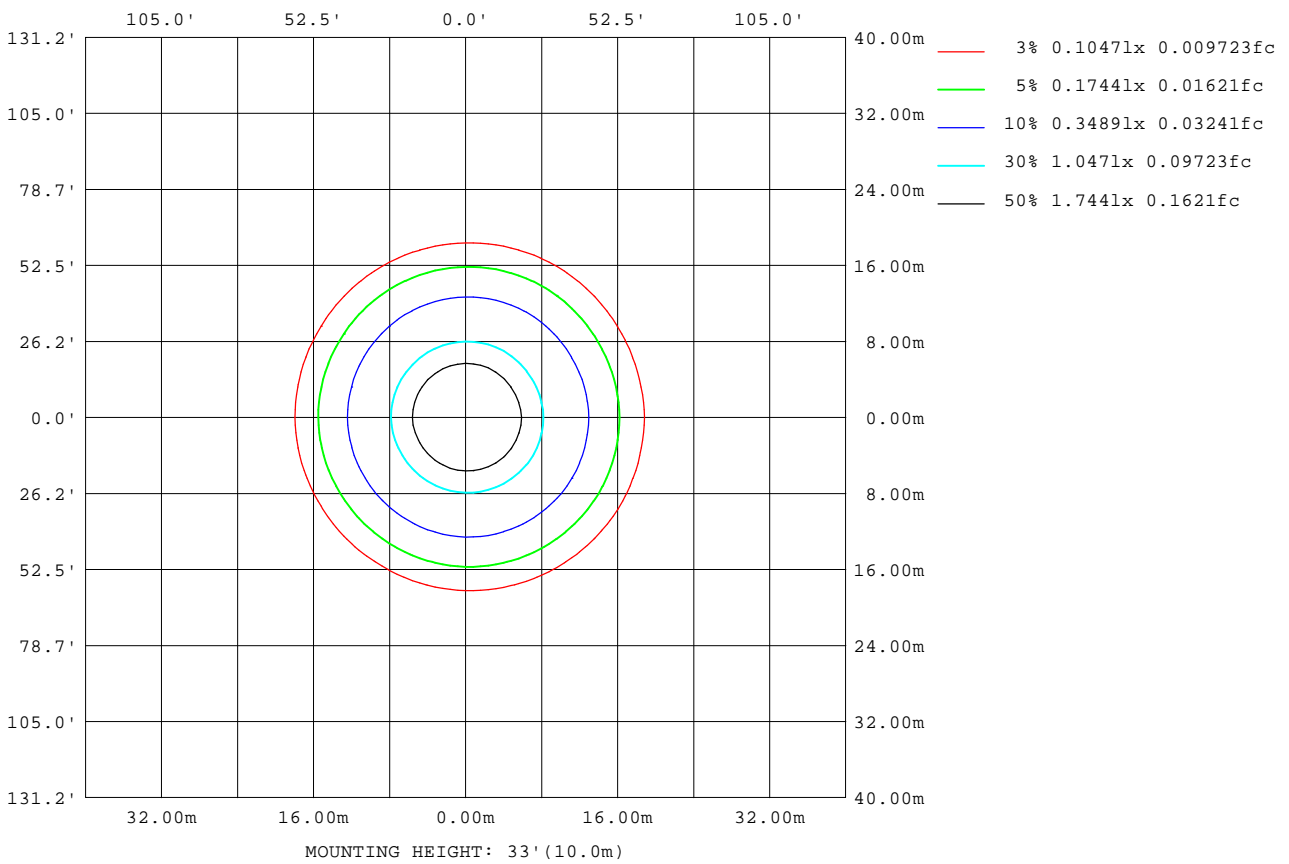
Note:The Curves indicate the illuminated area and the average illumination when the luminaire is at different distance.

C Range: 0 - 360DEG
 C Interval: 30.0DEG
 Test Speed: HIGH
 Temperature:25.3DEG
 Operators:DAMIN
 Test Date:2018-07-05

γ Range: 0 - 90DEG
 γ Interval: 1.0DEG
 Test System:EVERFINE GO-2000A_V1 SYSTEM V2.0.276
 Humidity:65.0%
 Test Distance:9.600m [K=1.0000]
 Remarks:

ISOLUX DIAGRAM

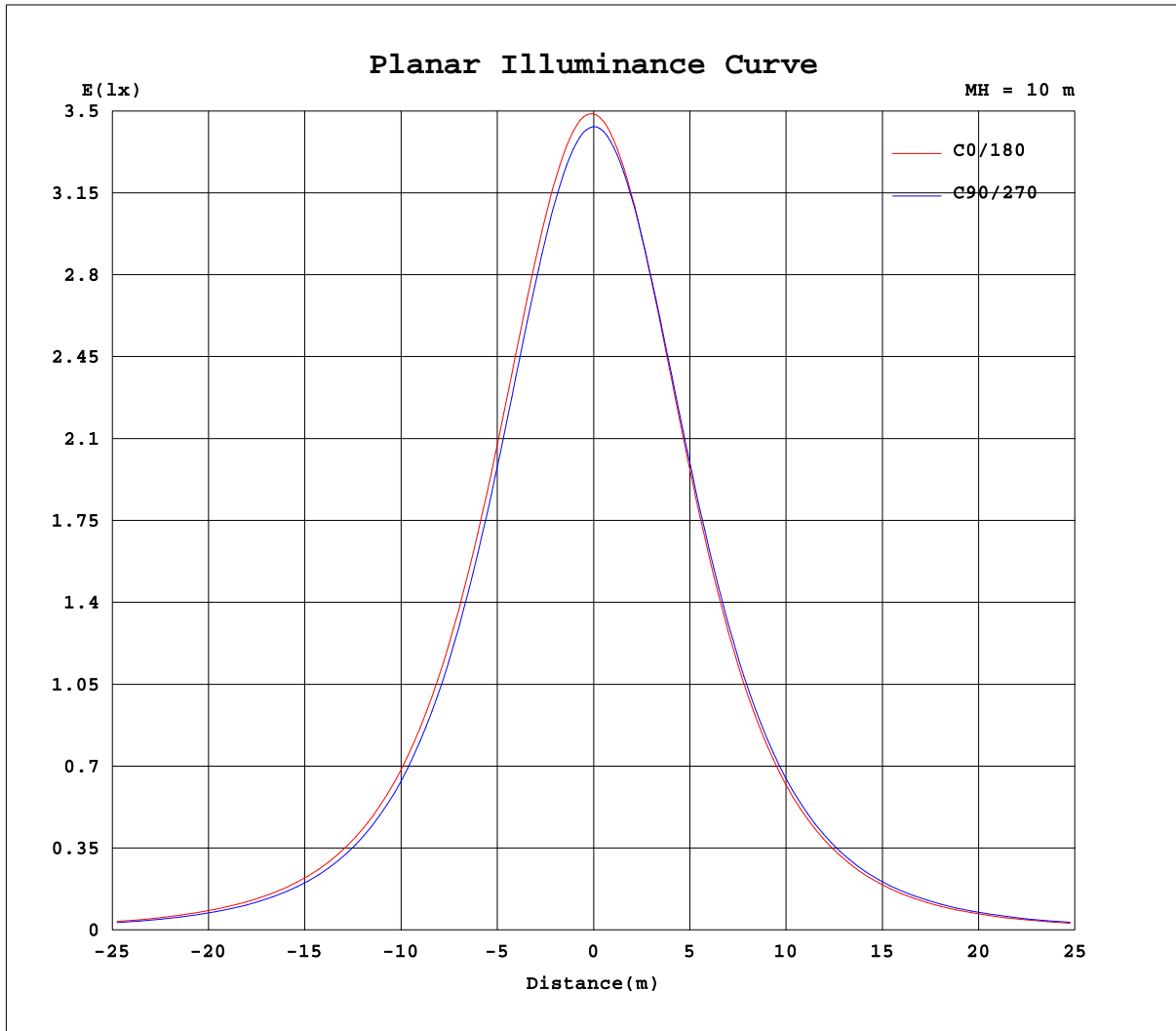
Test:U:240.6V I:0.0380A P:8.700W PF:0.9440 Lamp Flux:774.517x1 lm		
NAME: ID8W-CC	TYPE:8W	WEIGHT:
DIM.:	SPEC.:3000K	SERIAL No.:
MFR.:	SUR.:0.04	PROTECTION ANGLE:



C Range: 0 - 360DEG
 C Interval: 30.0DEG
 Test Speed: HIGH
 Temperature:25.3DEG
 Operators:DAMIN
 Test Date:2018-07-05

γ Range: 0 - 90DEG
 γ Interval: 1.0DEG
 Test System:EVERFINE GO-2000A_V1 SYSTEM V2.0.276
 Humidity:65.0%
 Test Distance:9.600m [K=1.0000]
 Remarks:

Planar Illuminance Curve



C Range: 0 - 360DEG
 C Interval: 30.0DEG
 Test Speed: HIGH
 Temperature: 25.3DEG
 Operators: DAMIN
 Test Date: 2018-07-05

γ Range: 0 - 90DEG
 γ Interval: 1.0DEG
 Test System: EVERFINE GO-2000A_V1 SYSTEM V2.0.276
 Humidity: 65.0%
 Test Distance: 9.600m [K=1.0000]
 Remarks:

LUMINOUS DISTRIBUTION INTENSITY DATA

Test:U:240.6V I:0.0380A P:8.700W PF:0.9440 Lamp Flux:774.517x1 lm		
NAME: ID8W-CC	TYPE:8W	WEIGHT:
DIM.:	SPEC.:3000K	SERIAL No.:
MFR.:	SUR.:0.04	PROTECTION ANGLE:

Table--1

UNIT: cd

C(DEG) γ (DEG)	0	30	60	90	120	150	180	210	240	270	300	330							
0	344	344	344	344	344	344	344	344	344	344	344	344							
5	344	343	342	342	341	340	340	341	341	342	343	343							
10	338	337	336	334	332	331	331	332	333	335	337	337							
15	327	327	324	322	319	318	318	319	321	323	326	327							
20	312	311	308	305	302	300	300	301	304	307	310	311							
25	293	292	288	285	281	279	279	280	284	287	291	292							
30	271	270	266	262	257	255	255	256	260	264	269	270							
35	246	245	241	236	231	229	229	230	235	239	244	245							
40	219	218	214	209	204	202	201	203	207	212	217	218							
45	192	191	186	181	176	174	173	175	179	184	189	191							
50	164	163	158	153	148	146	146	147	152	156	161	163							
55	136	135	131	126	121	119	119	120	125	129	134	135							
60	110	109	104	100	95.5	93.9	93.5	94.7	98.8	103	107	109							
65	84.8	83.8	79.6	75.5	71.2	69.8	69.4	70.5	74.3	78.1	82.4	83.9							
70	61.1	60.2	56.4	52.6	48.7	47.5	47.2	48.2	51.5	54.9	58.8	60.2							
75	38.8	38.6	35.3	31.9	28.6	27.5	26.0	28.1	30.9	33.8	37.2	38.4							
80	18.0	19.3	17.2	14.6	12.2	10.9	9.35	11.1	13.6	15.7	18.3	18.9							
85	4.40	4.99	4.31	3.08	2.24	1.68	1.31	1.70	2.61	3.52	4.78	4.91							
90	0.00	0.00	0.00	0.00	0.00	0.00	0.00	0.00	0.00	0.00	0.00	0.00							

C Range: 0 - 360DEG
 C Interval: 30.0DEG
 Test Speed: HIGH
 Temperature:25.3DEG
 Operators:DAMIN
 Test Date:2018-07-05

γ Range: 0 - 90DEG
 γ Interval: 1.0DEG
 Test System:EVERFINE GO-2000A_V1 SYSTEM V2.0.276
 Humidity:65.0%
 Test Distance:9.600m [K=1.0000]
 Remarks: