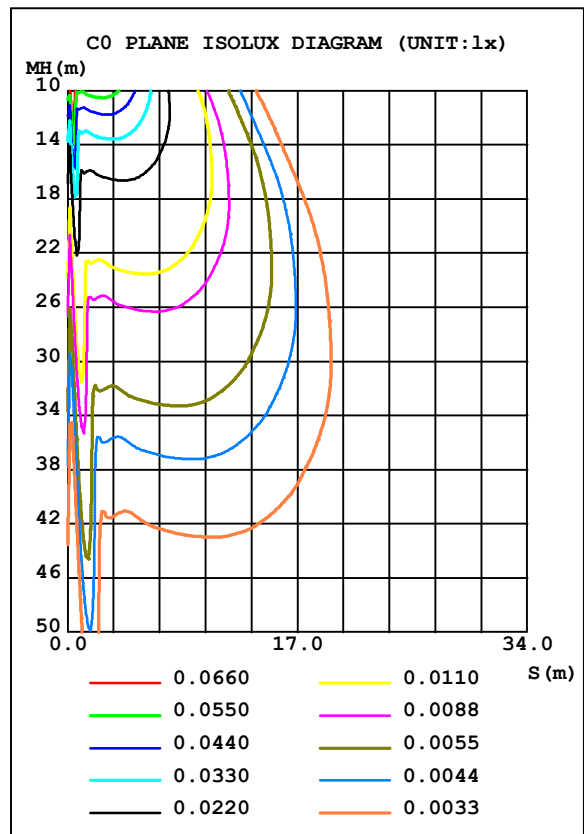
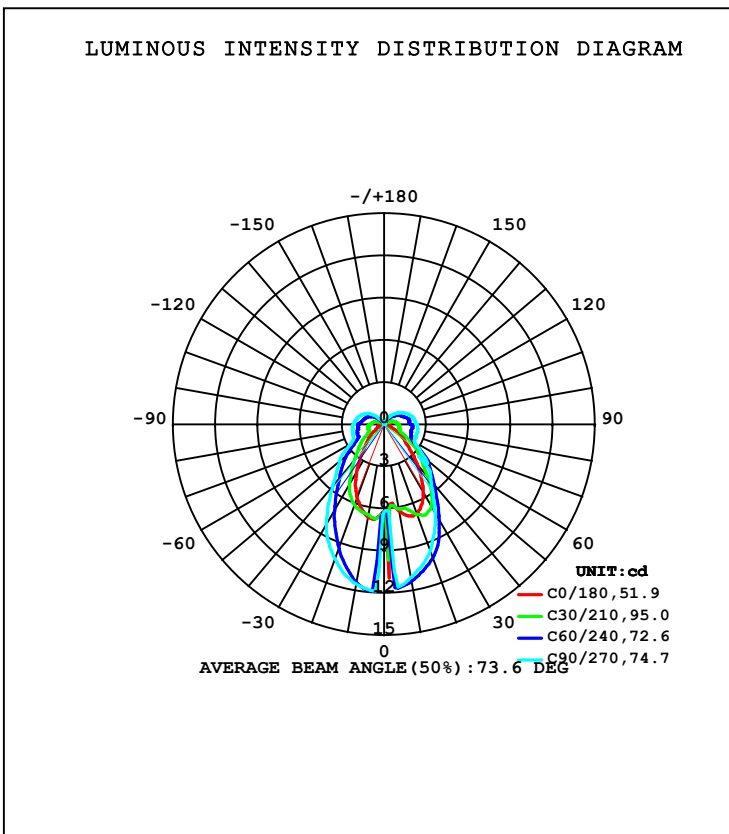


LUMINAIRE PHOTOMETRIC TEST REPORT

Test:U:3.9368V I:0.3364A P:1.3243W PF:1.0000 Freq:0Hz Lamp Flux:25.562x1 lm		
NAME:	TYPE:	WEIGHT:
SPEC.:	DIM.:	SERIAL No.:
		Shielding Angle:

DATA OF LAMP		PHOTOMETRIC DATA Eff: 19.30 lm/W			
MODEL	D908S	I _{max} (cd)	11.92	S/MH (C0/180)	1.01
NOMINAL POWER (W)		LOR (%)	100.0	S/MH (C90/270)	1.46
RATED VOLTAGE (V)	220	TOTAL FLUX (lm)	25.562	η UP, DN (C0-180)	10.2, 39.6
NOMINAL FLUX (lm)	25.562	CIE CLASS	SEMI-D.	η UP, DN (C180-360)	9.0, 41.3
LAMPS INSIDE	1	η up (%)	19.2	CIBSE SHR NOM	0.75
TEST VOLTAGE (V)	220.1	η down (%)	80.8	CIBSE SHR MAX	0.95



C Range: 0 - 360DEG
 C Interval: 15.0DEG
 Test Speed: HIGH
 Temperature: 25.3DEG
 Operators: NSZ
 Test Date: 2017-11-07

γ Range: 0 - 180DEG
 γ Interval: 1.0DEG
 Test System: EVERFINE GO-R5000_V2 SYSTEM V2.0.366
 Humidity: 65.0%
 Test Distance: 1.900m [K=1.2937]
 Remarks:

ZONAL FLUX DIAGRAM

ZONAL FLUX DIAGRAM:

γ	C0	C45	C90	C135	C180	C225	C270	C315	γ	Φ zone	Φ total	%lum, lamp
10	6.255	11.37	11.07	10.32	6.695	11.30	11.52	11.15	0- 10	0.8680	0.8680	3.4,3.4
20	6.785	10.32	9.596	8.497	5.602	9.061	10.22	10.62	10- 20	2.532	3.400	13.3,13.3
30	5.628	8.198	7.303	6.169	3.919	6.435	8.214	9.147	20- 30	3.537	6.937	27.1,27.1
40	3.680	5.511	5.226	4.394	2.257	4.404	5.690	6.127	30- 40	3.513	10.45	40.9,40.9
50	2.055	3.835	3.875	2.960	1.365	3.019	4.163	4.097	40- 50	2.943	13.39	52.4,52.4
60	1.208	2.260	2.526	1.943	0.5915	1.915	2.695	2.658	50- 60	2.247	15.64	61.2,61.2
70	0.4417	1.722	2.441	1.853	0.4515	1.739	2.378	1.895	60- 70	1.706	17.35	67.9,67.9
80	0.3207	1.653	2.441	1.846	0.3721	1.683	2.303	1.803	70- 80	1.663	19.01	74.4,74.4
90	0.2563	1.552	2.331	1.734	0.2880	1.570	2.207	1.718	80- 90	1.651	20.66	80.8,80.8
100	0.2138	1.411	2.186	1.634	0.2438	1.321	2.043	1.559	90-100	1.515	22.17	86.7,86.7
110	0.1814	1.240	1.982	1.403	0.1928	1.110	1.852	1.357	100-110	1.315	23.49	91.9,91.9
120	0.0586	0.9651	1.673	1.117	0.1249	0.8324	1.541	0.9020	110-120	1.007	24.50	95.8,95.8
130	0.0029	0.6633	1.292	0.7589	0.0014	0.3991	1.112	0.4177	120-130	0.6390	25.14	98.3,98.3
140	0	0.3281	0.8996	0.3510	0	0.0332	0.5282	0	130-140	0.3208	25.46	99.6,99.6
150	0	0.0001	0.3837	0	0	0	0.0087	0	140-150	0.0983	25.55	100,100
160	0	0	0	0	0	0	0	0	150-160	0.0073	25.56	100,100
170	0	0	0	0	0	0	0	0	160-170	0	25.56	100,100
180	0	0	0	0	0	0	0	0	170-180	0	25.56	100,100
DEG	LUMINOUS INTENSITY:cd									UNIT:lm		

Conical surface Flux(90deg): 12.001 lm

%lum = 46.9%

%lamp = 46.9%

Conical surface Flux(120deg): 15.641 lm

%lum = 61.2%

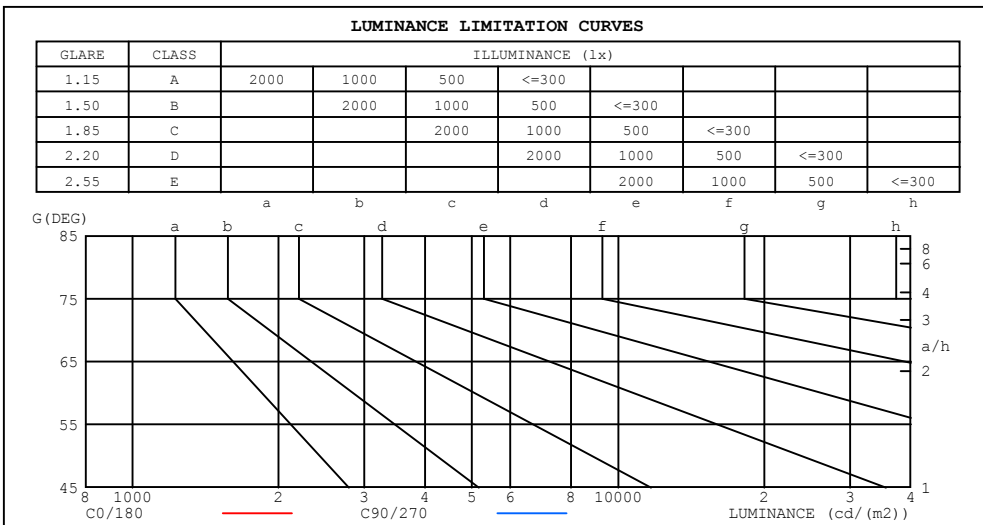
%lamp = 61.2%

C Range: 0 - 360DEG
 C Interval: 15.0DEG
 Test Speed: HIGH
 Temperature:25.3DEG
 Operators:NSZ
 Test Date:2017-11-07

γ Range: 0 - 180DEG
 γ Interval: 1.0DEG
 Test System:EVERFINE GO-R5000_V2 SYSTEM V2.0.366
 Humidity:65.0%
 Test Distance:1.900m [K=1.2937]
 Remarks:

LUMINANCE LIMITATION CURVES

Test:U:3.9368V I:0.3364A P:1.3243W PF:1.0000 Freq:0Hz Lamp Flux:25.562x1 lm		
NAME:	TYPE:	WEIGHT:
SPEC.:	DIM.:	SERIAL No.:
		Shielding Angle:



LUMINANCE cd/(m2)		
G (DEG)	C0/180	C90/270
85	97	822
80	55	418
75	45	281
70	38	212
65	49	172
60	72	150
55	83	156
50	95	179
45	116	194

C Range: 0 - 360DEG
 C Interval: 15.0DEG
 Test Speed: HIGH
 Temperature:25.3DEG
 Operators: NSZ
 Test Date:2017-11-07

γ Range: 0 - 180DEG
 γ Interval: 1.0DEG
 Test System: EVERFINE GO-R5000_V2 SYSTEM V2.0.366
 Humidity:65.0%
 Test Distance:1.900m [K=1.2937]
 Remarks:

WEC AND CCEC

Test:U:3.9368V I:0.3364A P:1.3243W PF:1.0000 Freq:0Hz Lamp Flux:25.562x1 lm		
NAME:	TYPE:	WEIGHT:
SPEC.:	DIM.:	SERIAL No.:
		Shielding Angle:

ρcc	80%			70%			50%			30%			10%			0
ρw	50%	30%	10%	50%	30%	10%	50%	30%	10%	50%	30%	10%	50%	30%	10%	0
ρfc	20%			20%			20%			20%			20%			0
RCR	RCR:Room Cavity Ratio						Wall Exitance Coefficients (WEC)									
0.0																
1.0	.339	.193	.061	.326	.186	.059	.301	.173	.055	.279	.161	.052	.259	.150	.048	
2.0	.294	.161	.049	.282	.155	.048	.260	.145	.045	.240	.135	.042	.221	.125	.039	
3.0	.263	.140	.042	.252	.135	.041	.232	.126	.038	.214	.117	.036	.197	.109	.034	
4.0	.238	.124	.036	.229	.120	.035	.211	.112	.033	.195	.104	.032	.179	.097	.030	
5.0	.218	.111	.032	.210	.108	.031	.194	.101	.030	.179	.094	.028	.165	.088	.026	
6.0	.202	.101	.029	.194	.098	.028	.179	.092	.027	.165	.086	.025	.152	.080	.024	
7.0	.187	.093	.026	.180	.090	.026	.167	.084	.024	.154	.079	.023	.142	.074	.022	
8.0	.175	.085	.024	.168	.083	.023	.156	.078	.022	.144	.073	.021	.133	.068	.020	
9.0	.164	.079	.022	.158	.077	.022	.146	.072	.021	.136	.068	.019	.125	.064	.018	
10.0	.154	.074	.021	.149	.072	.020	.138	.068	.019	.128	.064	.018	.119	.060	.017	

ρcc	80%			70%			50%			30%			10%			0
ρw	50%	30%	10%	50%	30%	10%	50%	30%	10%	50%	30%	10%	50%	30%	10%	0
ρfc	20%			20%			20%			20%			20%			0
RCR	RCR:Room Cavity Ratio						Ceiling Cavity Exitance Coefficients (CCEC)									
0.0	.337	.337	.337	.288	.288	.288	.196	.196	.196	.113	.113	.113	.036	.036	.036	
1.0	.330	.303	.279	.282	.260	.240	.193	.179	.166	.111	.104	.097	.036	.033	.031	
2.0	.321	.280	.246	.275	.241	.213	.188	.167	.148	.109	.097	.087	.035	.031	.028	
3.0	.312	.263	.224	.268	.227	.195	.184	.158	.136	.106	.092	.080	.034	.030	.026	
4.0	.304	.250	.210	.261	.216	.182	.179	.151	.128	.104	.088	.076	.033	.029	.025	
5.0	.296	.240	.199	.254	.208	.173	.175	.145	.122	.101	.085	.073	.033	.028	.024	
6.0	.289	.232	.192	.248	.201	.167	.171	.141	.118	.099	.083	.070	.032	.027	.023	
7.0	.282	.226	.186	.243	.195	.162	.168	.137	.115	.097	.081	.068	.031	.026	.023	
8.0	.276	.220	.181	.237	.191	.158	.164	.134	.112	.096	.079	.067	.031	.026	.022	
9.0	.270	.215	.178	.233	.187	.155	.161	.131	.110	.094	.078	.066	.030	.025	.022	
10.0	.265	.211	.175	.228	.183	.153	.158	.129	.109	.092	.076	.065	.030	.025	.022	

C Range: 0 - 360DEG
 C Interval: 15.0DEG
 Test Speed: HIGH
 Temperature:25.3DEG
 Operators:NSZ
 Test Date:2017-11-07

γ Range: 0 - 180DEG
 γ Interval: 1.0DEG
 Test System:EVERFINE GO-R5000_V2 SYSTEM V2.0.366
 Humidity:65.0%
 Test Distance:1.900m [K=1.2937]
 Remarks:

UGR(Unified Glare Rating) Table

Test:U:3.9368V I:0.3364A P:1.3243W PF:1.0000 Freq:0Hz Lamp Flux:25.562x1 lm										
NAME:					TYPE:			WEIGHT:		
SPEC.:					DIM.:			SERIAL No.:		
								Shielding Angle:		
ceiling/cavity	0.7	0.7	0.5	0.5	0.3	0.7	0.7	0.5	0.5	0.3
walls	0.5	0.3	0.5	0.3	0.3	0.5	0.3	0.5	0.3	0.3
working plane	0.2	0.2	0.2	0.2	0.2	0.2	0.2	0.2	0.2	0.2
Room dimensions	Viewed crosswise					Viewed endwise				
x = 2H y = 2H	15.0	16.2	15.5	16.7	17.3	17.8	19.0	18.3	19.5	20.1
3H	15.3	16.4	15.9	17.0	17.6	20.0	21.1	20.5	21.7	22.3
4H	15.5	16.6	16.1	17.1	17.8	21.5	22.6	22.1	23.2	23.8
6H	15.8	16.8	16.4	17.4	18.0	23.4	24.4	24.0	25.0	25.7
8H	16.0	17.0	16.6	17.6	18.2	24.6	25.5	25.2	26.1	26.8
12H	16.3	17.2	16.9	17.8	18.5	25.8	26.8	26.5	27.4	28.1
4H 2H	15.9	17.0	16.5	17.6	18.2	18.1	19.1	18.6	19.7	20.3
3H	16.8	17.7	17.4	18.3	19.0	20.6	21.6	21.3	22.2	22.9
4H	17.2	18.1	17.9	18.7	19.4	22.4	23.3	23.1	23.9	24.6
6H	17.7	18.5	18.4	19.1	19.9	24.6	25.4	25.3	26.0	26.8
8H	18.0	18.7	18.7	19.4	20.2	25.9	26.6	26.6	27.3	28.1
12H	18.3	19.0	19.0	19.7	20.5	27.4	28.0	28.1	28.7	29.5
8H 4H	18.8	19.6	19.5	20.2	21.0	22.7	23.5	23.4	24.1	24.9
6H	19.9	20.5	20.6	21.2	22.0	25.3	25.9	26.0	26.6	27.4
8H	20.5	21.0	21.2	21.7	22.5	26.8	27.4	27.5	28.1	28.9
12H	20.9	21.4	21.7	22.1	23.0	28.6	29.0	29.3	29.8	30.6
12H 4H	19.5	20.1	20.1	20.8	21.6	22.8	23.4	23.5	24.1	24.9
6H	20.9	21.5	21.6	22.2	23.0	25.4	26.0	26.1	26.7	27.5
8H	21.7	22.2	22.4	22.9	23.8	27.1	27.5	27.8	28.3	29.1
Variations with the observer position at spacings:										
S = 1.0H	+ 0.2 / - 0.2					+ 0.1 / - 0.1				
1.5H	+ 0.3 / - 0.2					+ 0.2 / - 0.3				
2.0H	+ 0.2 / - 0.3					+ 0.2 / - 0.3				

CIE Pub.117, 25.56 lm Total Lamp Luminous Flux Correct (8log(F/F0) = -12.7)

C Range: 0 - 360DEG
 C Interval: 15.0DEG
 Test Speed: HIGH
 Temperature:25.3DEG
 Operators:NSZ
 Test Date:2017-11-07

γ Range: 0 - 180DEG
 γ Interval: 1.0DEG
 Test System:EVERFINE GO-R5000_V2 SYSTEM V2.0.366
 Humidity:65.0%
 Test Distance:1.900m [K=1.2937]
 Remarks:

UTILIZATION FACTORS TABLE

Test:U:3.9368V I:0.3364A P:1.3243W PF:1.0000 Freq:0Hz Lamp Flux:25.562x1 lm		
NAME:	TYPE:	WEIGHT:
SPEC.:	DIM.:	SERIAL No.:
		Shielding Angle:

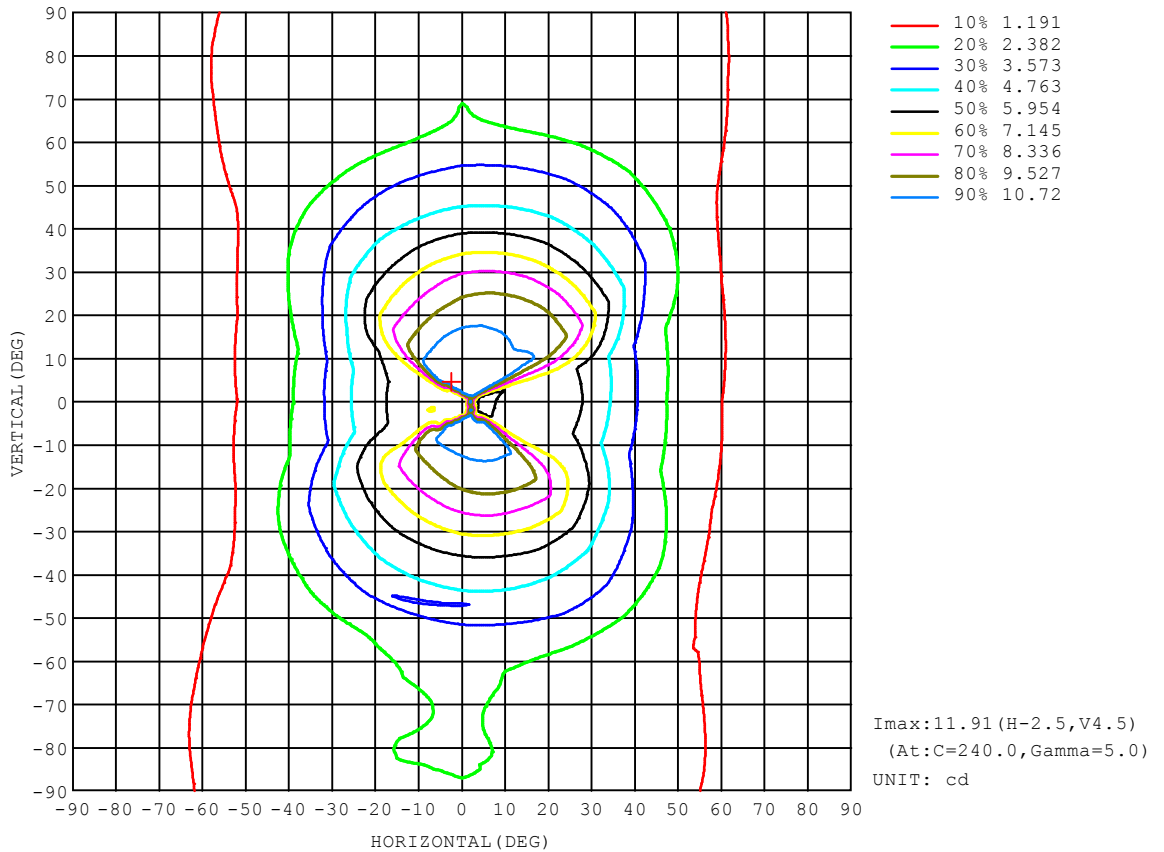
REFLECTANCE										
Ceiling	0.8	0.8	0.8	0.7	0.7	0.7	0.5	0.5	0.5	0
Walls	0.7	0.5	0.3	0.7	0.5	0.3	0.7	0.5	0.3	0
Working plane	0.2	0.2	0.2	0.2	0.2	0.2	0.2	0.2	0.2	0
ROOM INDEX	UTILIZATION FACTORS (PERCENT) $k(RI) \times RCR = 5$									
k = 0.60	55	44	37	54	43	37	52	42	37	31
0.80	64	52	45	62	51	45	60	50	44	37
1.00	71	59	52	69	58	51	66	58	50	42
1.25	77	66	58	75	65	58	71	62	56	47
1.50	82	71	63	79	69	62	74	66	60	51
2.00	88	78	71	85	76	69	79	72	66	55
2.50	92	83	76	88	80	74	82	76	70	58
3.00	95	87	80	91	84	78	85	79	74	61
4.00	99	92	86	95	89	83	88	83	79	64
5.00	102	95	90	97	92	87	90	86	82	67
ROOM INDEX	UF(total)									Direct
According to DIN EN 13032-2 2004			Suspended				SHRNOM = 1.25			

C Range: 0 - 360DEG
 C Interval: 15.0DEG
 Test Speed: HIGH
 Temperature:25.3DEG
 Operators:NSZ
 Test Date:2017-11-07

γ Range: 0 - 180DEG
 γ Interval: 1.0DEG
 Test System:EVERFINE GO-R5000_V2 SYSTEM V2.0.366
 Humidity:65.0%
 Test Distance:1.900m [K=1.2937]
 Remarks:

ISOCANDELA DIAGRAM

Test:U:3.9368V I:0.3364A P:1.3243W PF:1.0000 Freq:0Hz Lamp Flux:25.562x1 lm		
NAME:	TYPE:	WEIGHT:
SPEC.:	DIM.:	SERIAL No.:
		Shielding Angle:

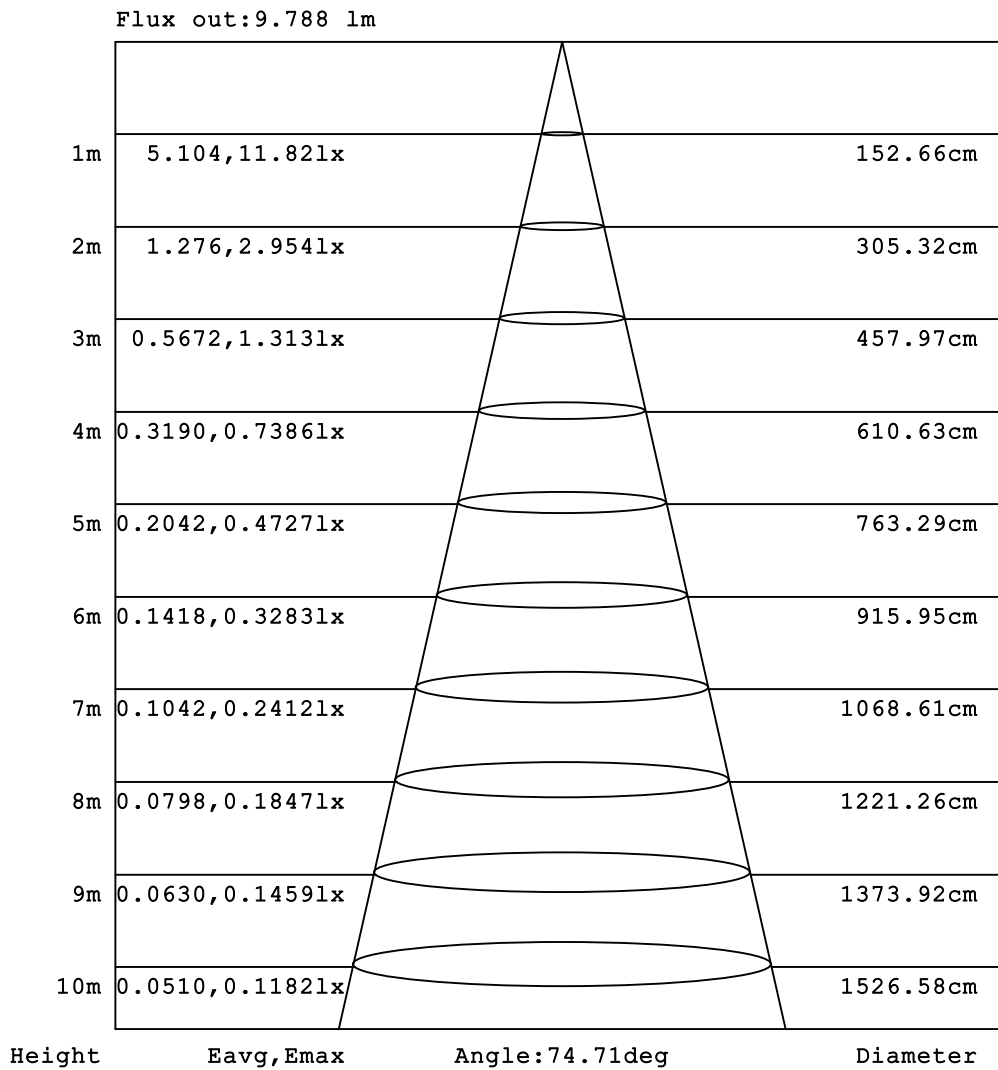


C Range: 0 - 360DEG
 C Interval: 15.0DEG
 Test Speed: HIGH
 Temperature:25.3DEG
 Operators:NSZ
 Test Date:2017-11-07

γ Range: 0 - 180DEG
 γ Interval: 1.0DEG
 Test System:EVERFINE GO-R5000_V2 SYSTEM V2.0.366
 Humidity:65.0%
 Test Distance:1.900m [K=1.2937]
 Remarks:

AAI Figure

Test:U:3.9368V I:0.3364A P:1.3243W PF:1.0000 Freq:0Hz Lamp Flux:25.562x1 lm		
NAME:	TYPE:	WEIGHT:
SPEC.:	DIM.:	SERIAL No.:
		Shielding Angle:

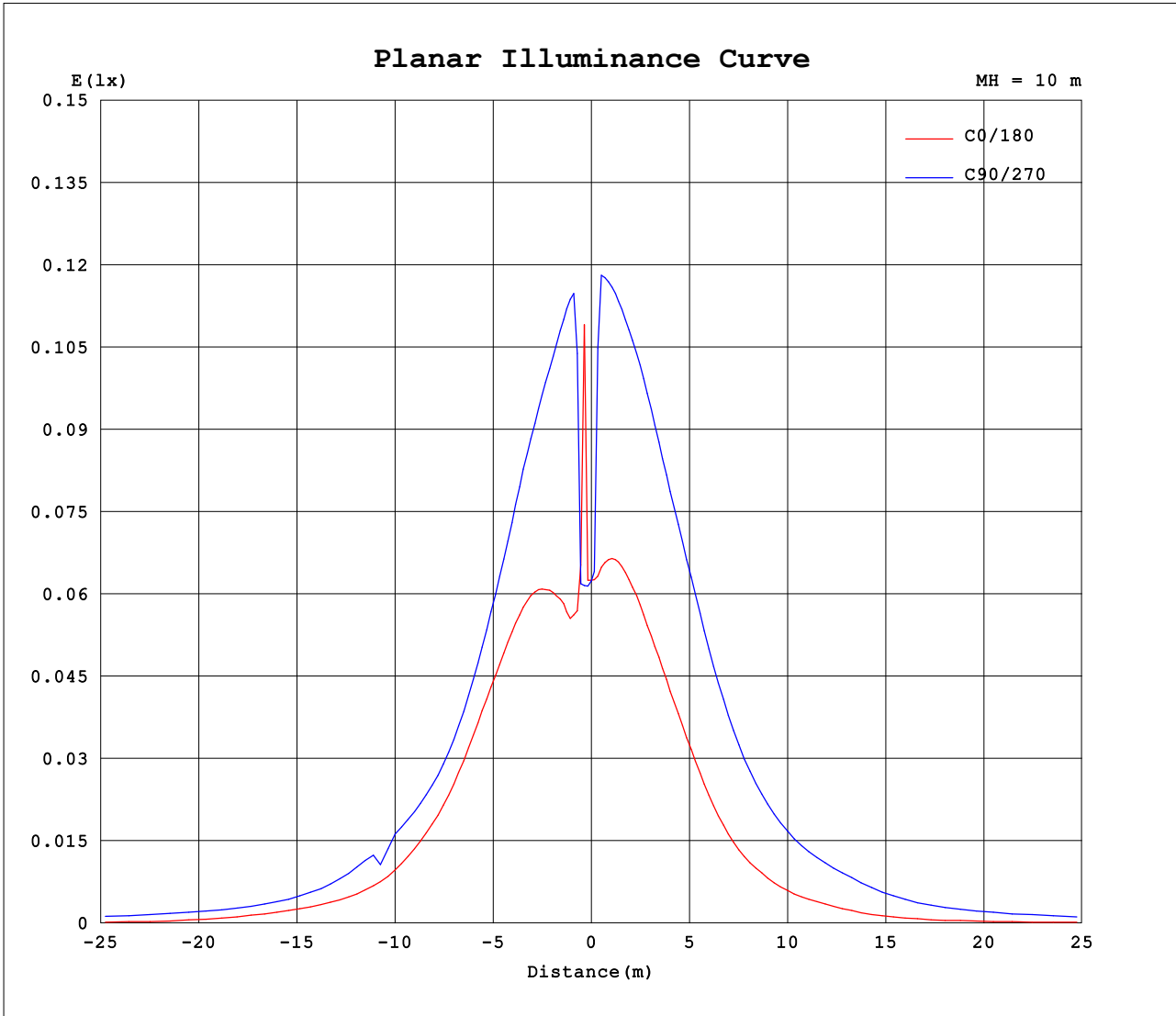


Note:The Curves indicate the illuminated area and the average illumination when the luminaire is at different distance.

C Range: 0 - 360DEG
 C Interval: 15.0DEG
 Test Speed: HIGH
 Temperature:25.3DEG
 Operators:NSZ
 Test Date:2017-11-07

γ Range: 0 - 180DEG
 γ Interval: 1.0DEG
 Test System:EVERFINE GO-R5000_V2 SYSTEM V2.0.366
 Humidity:65.0%
 Test Distance:1.900m [K=1.2937]
 Remarks:

Planar Illuminance Curve



C Range: 0 - 360DEG
 C Interval: 15.0DEG
 Test Speed: HIGH
 Temperature: 25.3DEG
 Operators: NSZ
 Test Date: 2017-11-07

γ Range: 0 - 180DEG
 γ Interval: 1.0DEG
 Test System: EVERFINE GO-R5000_V2 SYSTEM V2.0.366
 Humidity: 65.0%
 Test Distance: 1.900m [K=1.2937]
 Remarks:

LUMINOUS DISTRIBUTION INTENSITY DATA

Test:U:3.9368V I:0.3364A P:1.3243W PF:1.0000 Freq:0Hz Lamp Flux:25.562x1 lm		
NAME:	TYPE:	WEIGHT:
SPEC.:	DIM.:	SERIAL No.:
		Shielding Angle:

Table--1

UNIT: cd

C (DEG) γ (DEG)	0	15	30	45	60	75	90	105	120	135	150	165	180	195	210	225	240	255	270
0	6.26	6.26	6.26	6.25	6.24	6.24	6.24	6.24	6.24	6.23	6.24	6.24	6.26	6.26	6.26	6.25	6.24	6.24	6.24
5	5.69	5.67	5.80	7.29	11.7	11.7	11.6	11.2	6.94	6.49	6.79	6.79	6.71	6.81	6.72	9.14	11.9	11.9	11.8
10	6.25	6.43	6.11	11.4	11.3	11.2	11.1	11.0	10.9	10.3	6.44	6.91	6.69	6.68	6.55	11.3	11.4	11.5	11.5
15	6.76	6.82	6.24	10.9	10.8	10.6	10.4	10.1	9.86	9.65	6.12	6.27	6.24	6.22	6.40	10.2	10.5	10.8	11.0
20	6.79	6.63	6.83	10.3	10.1	9.94	9.60	9.14	8.77	8.50	6.67	5.65	5.60	5.66	6.14	9.06	9.42	9.84	10.2
25	6.35	6.15	7.09	9.48	9.19	8.85	8.50	8.08	7.65	7.38	6.52	4.89	4.85	4.92	5.65	7.77	8.24	8.78	9.35
30	5.63	5.44	6.74	8.20	7.89	7.61	7.30	6.91	6.56	6.17	5.63	3.97	3.92	4.03	4.95	6.44	7.08	7.64	8.21
35	4.62	4.48	5.87	6.78	6.65	6.37	6.10	5.85	5.60	5.19	4.73	3.13	2.97	3.06	4.07	5.29	5.88	6.44	6.90
40	3.68	3.61	4.80	5.51	5.56	5.40	5.23	5.05	4.80	4.39	3.87	2.52	2.26	2.30	3.28	4.40	4.95	5.33	5.69
45	2.76	2.77	3.89	4.57	4.71	4.70	4.61	4.38	4.12	3.68	3.12	2.06	1.71	1.80	2.68	3.67	4.22	4.51	4.77
50	2.06	2.17	3.20	3.84	4.10	4.04	3.87	3.58	3.32	2.96	2.41	1.69	1.37	1.52	2.24	3.02	3.53	3.93	4.16
55	1.61	1.74	2.55	3.08	3.14	3.02	3.01	2.81	2.55	2.26	1.76	1.19	0.90	1.15	1.74	2.38	2.78	3.11	3.49
60	1.21	1.32	1.85	2.26	2.39	2.45	2.53	2.46	2.24	1.94	1.46	0.89	0.59	0.84	1.37	1.92	2.21	2.42	2.69
65	0.70	0.82	1.35	1.83	2.13	2.35	2.45	2.38	2.19	1.88	1.38	0.79	0.46	0.70	1.23	1.77	2.05	2.26	2.41
70	0.44	0.59	1.17	1.72	2.06	2.30	2.44	2.32	2.12	1.85	1.37	0.77	0.45	0.66	1.21	1.74	2.05	2.28	2.38
75	0.39	0.54	1.12	1.67	1.98	2.26	2.44	2.34	2.11	1.84	1.35	0.75	0.38	0.63	1.18	1.71	2.01	2.22	2.32
80	0.32	0.50	1.09	1.65	2.02	2.31	2.44	2.39	2.19	1.85	1.35	0.74	0.37	0.61	1.16	1.68	1.91	2.12	2.30
85	0.28	0.46	1.06	1.63	2.04	2.32	2.41	2.35	2.16	1.82	1.33	0.73	0.32	0.59	1.13	1.65	1.89	2.12	2.27
90	0.26	0.44	1.01	1.55	1.92	2.21	2.33	2.21	2.01	1.73	1.26	0.68	0.29	0.54	1.05	1.57	1.86	2.10	2.21
95	0.24	0.42	0.95	1.46	1.79	2.09	2.25	2.12	1.94	1.68	1.23	0.66	0.27	0.49	0.95	1.42	1.73	1.99	2.13
100	0.21	0.36	0.89	1.41	1.80	2.06	2.19	2.13	1.95	1.63	1.16	0.58	0.24	0.42	0.85	1.32	1.59	1.82	2.04
105	0.20	0.32	0.80	1.35	1.75	2.01	2.11	2.06	1.87	1.53	1.06	0.51	0.22	0.38	0.76	1.22	1.51	1.75	1.96
110	0.18	0.28	0.69	1.24	1.57	1.87	1.98	1.86	1.69	1.40	0.94	0.42	0.19	0.31	0.67	1.11	1.42	1.68	1.85
115	0.14	0.20	0.56	1.10	1.42	1.69	1.84	1.70	1.55	1.26	0.83	0.33	0.16	0.25	0.55	0.99	1.29	1.56	1.72
120	0.06	0.07	0.45	0.97	1.30	1.54	1.67	1.59	1.42	1.12	0.63	0.21	0.12	0.15	0.33	0.83	1.15	1.36	1.54
125	0.02	0.02	0.35	0.83	1.15	1.38	1.49	1.43	1.27	0.95	0.44	0.07	0.03	0.05	0.18	0.63	1.00	1.19	1.36
130	0.00	0.01	0.23	0.66	0.98	1.19	1.29	1.22	1.10	0.76	0.25	0.02	0.00	0.01	0.05	0.40	0.75	0.99	1.11
135	0.00	0.00	0.10	0.51	0.82	1.00	1.11	1.04	0.91	0.57	0.05	0.00	0.00	0.00	0.01	0.20	0.48	0.73	0.83
140	0.00	0.00	0.00	0.33	0.64	0.81	0.90	0.84	0.69	0.35	0.00	0.00	0.00	0.00	0.00	0.03	0.24	0.45	0.53
145	0.00	0.00	0.00	0.12	0.41	0.60	0.67	0.61	0.44	0.10	0.00	0.00	0.00	0.00	0.00	0.00	0.04	0.16	0.22
150	0.00	0.00	0.00	0.00	0.15	0.32	0.38	0.33	0.14	0.00	0.00	0.00	0.00	0.00	0.00	0.00	0.00	0.00	0.01
155	0.00	0.00	0.00	0.00	0.00	0.03	0.06	0.03	0.00	0.00	0.00	0.00	0.00	0.00	0.00	0.00	0.00	0.00	0.00
160	0.00	0.00	0.00	0.00	0.00	0.00	0.00	0.00	0.00	0.00	0.00	0.00	0.00	0.00	0.00	0.00	0.00	0.00	0.00
165	0.00	0.00	0.00	0.00	0.00	0.00	0.00	0.00	0.00	0.00	0.00	0.00	0.00	0.00	0.00	0.00	0.00	0.00	0.00
170	0.00	0.00	0.00	0.00	0.00	0.00	0.00	0.00	0.00	0.00	0.00	0.00	0.00	0.00	0.00	0.00	0.00	0.00	0.00
175	0.00	0.00	0.00	0.00	0.00	0.00	0.00	0.00	0.00	0.00	0.00	0.00	0.00	0.00	0.00	0.00	0.00	0.00	0.00
180	0.00	0.00	0.00	0.00	0.00	0.00	0.00	0.00	0.00	0.00	0.00	0.00	0.00	0.00	0.00	0.00	0.00	0.00	0.00

C Range: 0 - 360DEG
 C Interval: 15.0DEG
 Test Speed: HIGH
 Temperature:25.3DEG
 Operators:NSZ
 Test Date:2017-11-07

γ Range: 0 - 180DEG
 γ Interval: 1.0DEG
 Test System:EVERFINE GO-R5000_V2 SYSTEM V2.0.366
 Humidity:65.0%
 Test Distance:1.900m [K=1.2937]
 Remarks:

LUMINOUS DISTRIBUTION INTENSITY DATA

Test:U:3.9368V I:0.3364A P:1.3243W PF:1.0000 Freq:0Hz Lamp Flux:25.562x1 lm		
NAME:	TYPE:	WEIGHT:
SPEC.:	DIM.:	SERIAL No.:
MFR.:		Shielding Angle:

Table--2

UNIT: cd

C (DEG) γ (DEG)	285	300	315	330	345														
0	6.24	6.24	6.23	6.24	6.24														
5	11.7	11.6	11.5	11.5	5.78														
10	11.5	11.3	11.2	11.2	5.93														
15	11.0	10.9	10.8	10.9	6.15														
20	10.5	10.5	10.6	10.7	6.38														
25	9.69	9.88	10.1	10.2	6.19														
30	8.59	8.94	9.15	9.12	5.67														
35	7.22	7.50	7.66	7.62	4.84														
40	5.90	6.15	6.13	6.01	3.84														
45	4.91	5.03	4.94	4.68	2.94														
50	4.28	4.27	4.10	3.74	2.31														
55	3.60	3.61	3.43	3.05	1.94														
60	2.71	2.78	2.66	2.27	1.58														
65	2.34	2.25	2.09	1.65	1.09														
70	2.34	2.17	1.89	1.42	0.83														
75	2.27	2.14	1.85	1.36	0.76														
80	2.20	2.03	1.80	1.31	0.72														
85	2.20	1.97	1.76	1.28	0.69														
90	2.20	2.01	1.72	1.23	0.66														
95	2.10	1.93	1.64	1.17	0.63														
100	1.99	1.79	1.56	1.11	0.56														
105	1.91	1.70	1.48	1.03	0.48														
110	1.84	1.65	1.36	0.84	0.39														
115	1.71	1.52	1.16	0.60	0.28														
120	1.51	1.30	0.90	0.36	0.13														
125	1.30	1.06	0.66	0.12	0.05														
130	1.04	0.80	0.42	0.02	0.02														
135	0.77	0.54	0.12	0.00	0.00														
140	0.47	0.24	0.00	0.00	0.00														
145	0.12	0.00	0.00	0.00	0.00														
150	0.00	0.00	0.00	0.00	0.00														
155	0.00	0.00	0.00	0.00	0.00														
160	0.00	0.00	0.00	0.00	0.00														
165	0.00	0.00	0.00	0.00	0.00														
170	0.00	0.00	0.00	0.00	0.00														
175	0.00	0.00	0.00	0.00	0.00														
180	0.00	0.00	0.00	0.00	0.00														

C Range: 0 - 360DEG
 C Interval: 15.0DEG
 Test Speed: HIGH
 Temperature:25.3DEG
 Operators:NSZ
 Test Date:2017-11-07

γ Range: 0 - 180DEG
 γ Interval: 1.0DEG
 Test System:EVERFINE GO-R5000_V2 SYSTEM V2.0.366
 Humidity:65.0%
 Test Distance:1.900m [K=1.2937]
 Remarks: