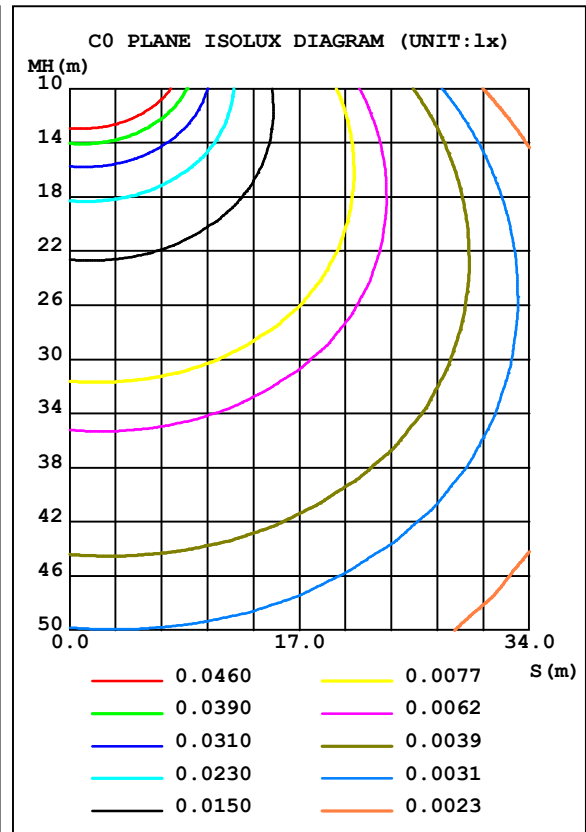
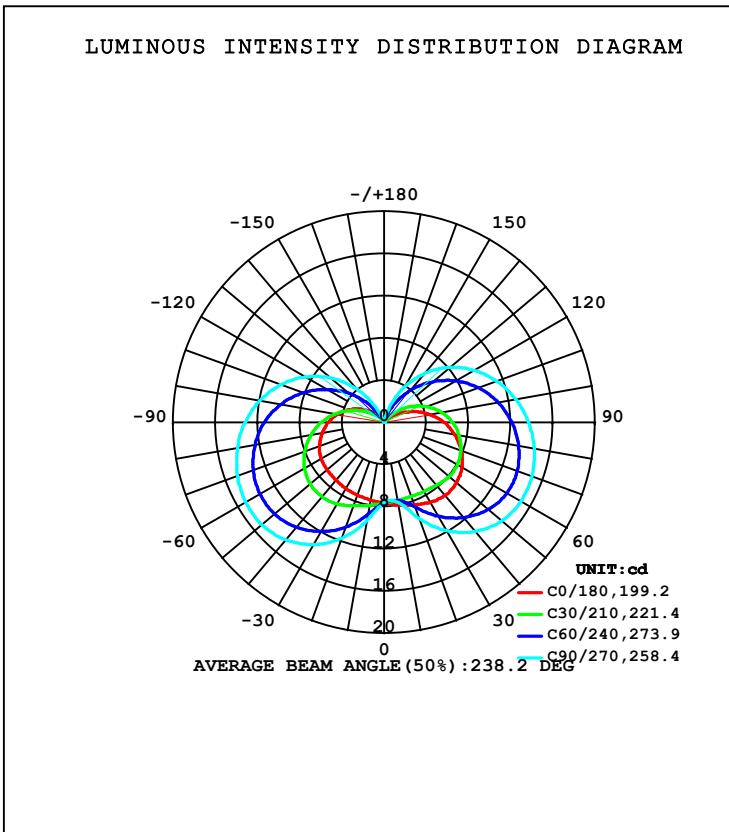


LUMINAIRE PHOTOMETRIC TEST REPORT

Test:U:3.9950V I:0.3303A P:1.3195W PF:1.0000 Freq:0Hz Lamp Flux:106.717x1 lm		
	TYPE:	WEIGHT:
SPEC.:	DIM.:	SERIAL No.:
		Shielding Angle:

DATA OF LAMP		PHOTOMETRIC DATA Eff: 80.88 lm/W			
MODEL	D908S	I <sub>max</sub> (cd)	15.39	S/MH (C0/180)	1.44
NOMINAL POWER (W)		LOR (%)	100.0	S/MH (C90/270)	2.45
RATED VOLTAGE (V)	220	TOTAL FLUX (lm)	106.72	η UP, DN (C0-180)	18.2, 32.4
NOMINAL FLUX (lm)	106.717	CIE CLASS	SEMI-D.	η UP, DN (C180-360)	15.7, 33.7
LAMPS INSIDE	1	η up (%)	33.9	CIBSE SHR NOM	1.75
TEST VOLTAGE (V)	220.1	η down (%)	66.1	CIBSE SHR MAX	1.75



C Range: 0 - 360DEG  
 C Interval: 15.0DEG  
 Test Speed: HIGH  
 Temperature: 25.3DEG  
 Operators: NSZ  
 Test Date: 2018-1-5

γ Range: 0 - 180DEG  
 γ Interval: 1.0DEG  
 Test System: EVERFINE GO-R5000\_V2 SYSTEM V2.0.366  
 Humidity: 65.0%  
 Test Distance: 1.900m [K=1.3255]  
 Remarks:

ZONAL FLUX DIAGRAM

ZONAL FLUX DIAGRAM:

γ	C0	C45	C90	C135	C180	C225	C270	C315	γ	Φ zone	Φ total	%lum, lamp
10	7.978	7.494	7.709	7.532	7.506	8.408	9.447	9.119	0- 10	0.7529	0.7529	0.71,0.71
20	8.369	7.822	9.684	8.988	7.377	9.592	11.67	11.19	10- 20	2.484	3.237	3.03,3.03
30	8.773	8.816	11.87	10.94	7.273	10.64	13.39	12.85	20- 30	4.628	7.865	7.37,7.37
40	9.035	9.994	13.51	12.47	7.160	11.37	14.54	14.04	30- 40	6.960	14.82	13.9,13.9
50	8.968	10.83	14.56	13.54	7.064	11.70	15.12	14.71	40- 50	9.139	23.96	22.5,22.5
60	8.551	11.20	14.99	14.00	6.918	11.63	15.17	14.83	50- 60	10.85	34.82	32.6,32.6
70	7.802	11.16	14.93	13.93	6.536	11.14	14.80	14.45	60- 70	11.87	46.69	43.8,43.8
80	6.824	10.70	14.47	13.49	5.958	10.26	14.11	13.71	70- 80	12.12	58.81	55.1,55.1
90	5.712	9.901	13.70	12.76	5.329	9.149	13.20	12.70	80- 90	11.67	70.49	66.1,66.1
100	4.435	8.813	12.69	11.78	4.538	7.713	11.98	11.35	90-100	10.62	81.11	76,76
110	3.055	7.404	11.41	10.50	3.576	6.020	10.46	9.689	100-110	8.988	90.09	84.4,84.4
120	1.772	5.757	9.897	8.953	2.555	4.219	8.649	7.729	110-120	6.986	97.08	91,91
130	0.9133	4.001	8.145	7.169	1.581	2.443	6.555	5.564	120-130	4.876	102.0	95.5,95.5
140	0.3673	2.313	6.114	5.184	0.8387	0.8733	4.240	3.281	130-140	2.930	104.9	98.3,98.3
150	0.0979	0.8906	3.851	3.101	0.3886	0.1499	1.828	1.179	140-150	1.381	106.3	99.6,99.6
160	0.0113	0.0549	1.531	1.107	0.0888	0.0248	0.0134	0	150-160	0.4077	106.7	100,100
170	0	0	0.0008	0.0000	0	0	0	0	160-170	0.0421	106.7	100,100
180	0	0	0	0	0	0	0	0	170-180	0.0000	106.7	100,100
DEG	LUMINOUS INTENSITY:cd									UNIT:lm		

Conical surface Flux(90deg): 19.143 lm

%lum = 17.9%  
%lamp = 17.9%

Conical surface Flux(120deg): 34.819 lm

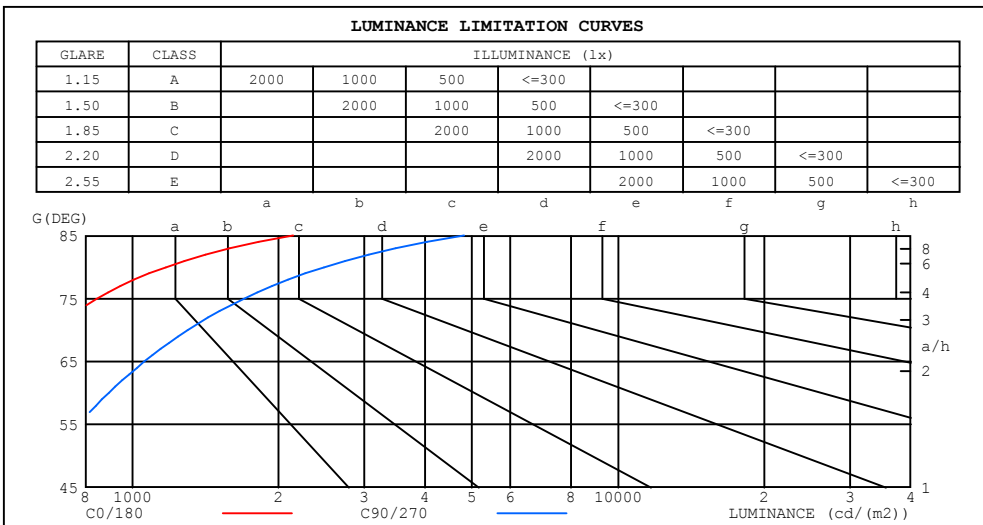
%lum = 32.6%  
%lamp = 32.6%

C Range: 0 - 360DEG  
C Interval: 15.0DEG  
Test Speed: HIGH  
Temperature:25.3DEG  
Operators:NSZ  
Test Date:2018-1-5

γ Range: 0 - 180DEG  
γ Interval: 1.0DEG  
Test System:EVERFINE GO-R5000\_V2 SYSTEM V2.0.366  
Humidity:65.0%  
Test Distance:1.900m [K=1.3255]  
Remarks:

**LUMINANCE LIMITATION CURVES**

Test:U:3.9950V I:0.3303A P:1.3195W PF:1.0000 Freq:0Hz Lamp Flux:106.717x1 lm		
	TYPE:	WEIGHT:
SPEC.:	DIM.:	SERIAL No.:
		Shielding Angle:



LUMINANCE cd/(m2)		
G (DEG)	C0/180	C90/270
85	2144	4820
80	1170	2480
75	844	1695
70	679	1299
65	578	1058
60	509	892
55	457	770
50	415	674
45	381	593

C Range: 0 - 360DEG  
 C Interval: 15.0DEG  
 Test Speed: HIGH  
 Temperature:25.3DEG  
 Operators:NSZ  
 Test Date:2018-1-5

$\gamma$  Range: 0 - 180DEG  
 $\gamma$  Interval: 1.0DEG  
 Test System:EVERFINE GO-R5000\_V2 SYSTEM V2.0.366  
 Humidity:65.0%  
 Test Distance:1.900m [K=1.3255]  
 Remarks:

WEC AND CCEC

Test:U:3.9950V I:0.3303A P:1.3195W PF:1.0000 Freq:0Hz Lamp Flux:106.717x1 lm		
	TYPE:	WEIGHT:
SPEC.:	DIM.:	SERIAL No.:
		Shielding Angle:

ρcc	80%			70%			50%			30%			10%			0
ρw	50%	30%	10%	50%	30%	10%	50%	30%	10%	50%	30%	10%	50%	30%	10%	0
ρfc	20%			20%			20%			20%			20%			0
RCR	RCR:Room Cavity Ratio						Wall Exitance Coefficients (WEC)									
0.0																
1.0	.438	.249	.079	.421	.240	.076	.388	.222	.071	.357	.206	.066	.329	.191	.061	
2.0	.365	.200	.061	.349	.192	.059	.318	.177	.055	.291	.163	.051	.265	.150	.047	
3.0	.317	.169	.051	.302	.162	.049	.275	.149	.045	.249	.137	.042	.226	.125	.039	
4.0	.281	.146	.043	.268	.140	.041	.243	.129	.038	.219	.118	.036	.198	.107	.033	
5.0	.253	.129	.037	.241	.124	.036	.218	.113	.033	.196	.103	.031	.176	.094	.028	
6.0	.230	.115	.033	.219	.110	.032	.197	.101	.029	.178	.092	.027	.159	.084	.025	
7.0	.211	.104	.030	.200	.100	.028	.181	.091	.026	.163	.083	.024	.145	.076	.022	
8.0	.194	.095	.027	.185	.091	.026	.167	.083	.024	.150	.076	.022	.134	.069	.020	
9.0	.180	.087	.024	.171	.084	.023	.155	.077	.022	.139	.070	.020	.124	.063	.018	
10.0	.168	.081	.022	.160	.077	.022	.144	.071	.020	.130	.064	.018	.116	.058	.017	

ρcc	80%			70%			50%			30%			10%			0
ρw	50%	30%	10%	50%	30%	10%	50%	30%	10%	50%	30%	10%	50%	30%	10%	0
ρfc	20%			20%			20%			20%			20%			0
RCR	RCR:Room Cavity Ratio						Ceiling Cavity Exitance Coefficients (CCEC)									
0.0	.449	.449	.449	.384	.384	.384	.262	.262	.262	.151	.151	.151	.048	.048	.048	
1.0	.450	.416	.385	.385	.357	.331	.263	.246	.229	.152	.142	.133	.049	.046	.043	
2.0	.445	.394	.352	.381	.339	.304	.261	.235	.212	.150	.137	.124	.048	.044	.041	
3.0	.437	.379	.332	.375	.327	.288	.257	.227	.202	.149	.132	.119	.048	.043	.039	
4.0	.430	.367	.319	.369	.317	.277	.254	.221	.195	.147	.129	.115	.047	.042	.038	
5.0	.422	.358	.310	.362	.309	.270	.250	.216	.190	.145	.127	.113	.047	.041	.037	
6.0	.415	.350	.304	.356	.303	.264	.246	.212	.187	.143	.125	.111	.046	.041	.037	
7.0	.407	.344	.299	.350	.298	.261	.242	.209	.185	.141	.123	.110	.045	.040	.036	
8.0	.400	.338	.296	.345	.293	.258	.239	.206	.183	.139	.122	.109	.045	.040	.036	
9.0	.394	.334	.293	.339	.290	.256	.235	.204	.181	.137	.120	.108	.044	.039	.036	
10.0	.388	.330	.291	.335	.286	.254	.232	.201	.180	.135	.119	.108	.044	.039	.036	

C Range: 0 - 360DEG  
 C Interval: 15.0DEG  
 Test Speed: HIGH  
 Temperature:25.3DEG  
 Operators:NSZ  
 Test Date:2018-1-5

γ Range: 0 - 180DEG  
 γ Interval: 1.0DEG  
 Test System:EVERFINE GO-R5000\_V2 SYSTEM V2.0.366  
 Humidity:65.0%  
 Test Distance:1.900m [K=1.3255]  
 Remarks:

UGR(Unified Glare Rating) Table

Test:U:3.9950V I:0.3303A P:1.3195W PF:1.0000 Freq:0Hz Lamp Flux:106.717x1 lm										
					TYPE:	WEIGHT:				
SPEC.:					DIM.:	SERIAL No.:				
					Shielding Angle:					
ceiling/cavity	0.7	0.7	0.5	0.5	0.3	0.7	0.7	0.5	0.5	0.3
walls	0.5	0.3	0.5	0.3	0.3	0.5	0.3	0.5	0.3	0.3
working plane	0.2	0.2	0.2	0.2	0.2	0.2	0.2	0.2	0.2	0.2
Room dimensions	Viewed crosswise					Viewed endwise				
x = 2H y = 2H	13.8	15.1	14.5	15.9	16.7	18.2	19.5	18.9	20.2	21.1
3H	16.3	17.5	17.0	18.2	19.2	21.6	22.8	22.3	23.5	24.4
4H	17.8	18.9	18.5	19.7	20.6	23.4	24.5	24.2	25.3	26.3
6H	19.6	20.6	20.4	21.4	22.4	25.4	26.5	26.2	27.3	28.2
8H	20.6	21.7	21.4	22.5	23.4	26.6	27.6	27.3	28.4	29.3
12H	21.9	22.8	22.6	23.6	24.6	27.8	28.8	28.6	29.6	30.6
4H 2H	16.0	17.1	16.7	17.9	18.8	18.8	19.9	19.5	20.7	21.6
3H	18.3	19.3	19.1	20.1	21.1	22.4	23.4	23.2	24.2	25.2
4H	19.6	20.5	20.4	21.3	22.3	24.5	25.4	25.3	26.2	27.2
6H	21.1	21.9	21.9	22.7	23.8	26.7	27.5	27.5	28.4	29.4
8H	22.0	22.8	22.8	23.6	24.7	27.9	28.7	28.8	29.6	30.6
12H	23.2	23.9	24.1	24.8	25.9	29.3	30.0	30.2	30.9	32.0
8H 4H	21.3	22.1	22.2	22.9	24.0	24.9	25.6	25.7	26.5	27.5
6H	23.0	23.6	23.8	24.5	25.6	27.4	28.1	28.3	29.0	30.0
8H	23.8	24.4	24.7	25.3	26.4	28.9	29.5	29.8	30.4	31.5
12H	24.9	25.4	25.8	26.3	27.4	30.6	31.1	31.4	32.0	33.1
12H 4H	21.9	22.6	22.8	23.5	24.5	24.9	25.6	25.7	26.4	27.5
6H	23.8	24.4	24.7	25.3	26.4	27.6	28.2	28.4	29.0	30.2
8H	24.8	25.3	25.7	26.2	27.3	29.2	29.7	30.0	30.6	31.7
Variations with the observer position at spacings:										
S = 1.0H	+ 0.1 / - 0.1					+ 0.1 / - 0.1				
1.5H	+ 0.2 / - 0.2					+ 0.2 / - 0.3				
2.0H	+ 0.4 / - 0.3					+ 0.3 / - 0.4				

CIE Pub.117, 106.7 lm Total Lamp Luminous Flux Correct (8log(F/F0) = -7.8)

C Range: 0 - 360DEG  
 C Interval: 15.0DEG  
 Test Speed: HIGH  
 Temperature:25.3DEG  
 Operators:NSZ  
 Test Date:2018-1-5

γ Range: 0 - 180DEG  
 γ Interval: 1.0DEG  
 Test System:EVERFINE GO-R5000\_V2 SYSTEM V2.0.366  
 Humidity:65.0%  
 Test Distance:1.900m [K=1.3255]  
 Remarks:

**UTILIZATION FACTORS TABLE**

Test:U:3.9950V I:0.3303A P:1.3195W PF:1.0000 Freq:0Hz Lamp Flux:106.717x1 lm		
	TYPE:	WEIGHT:
SPEC.:	DIM.:	SERIAL No.:
		Shielding Angle:

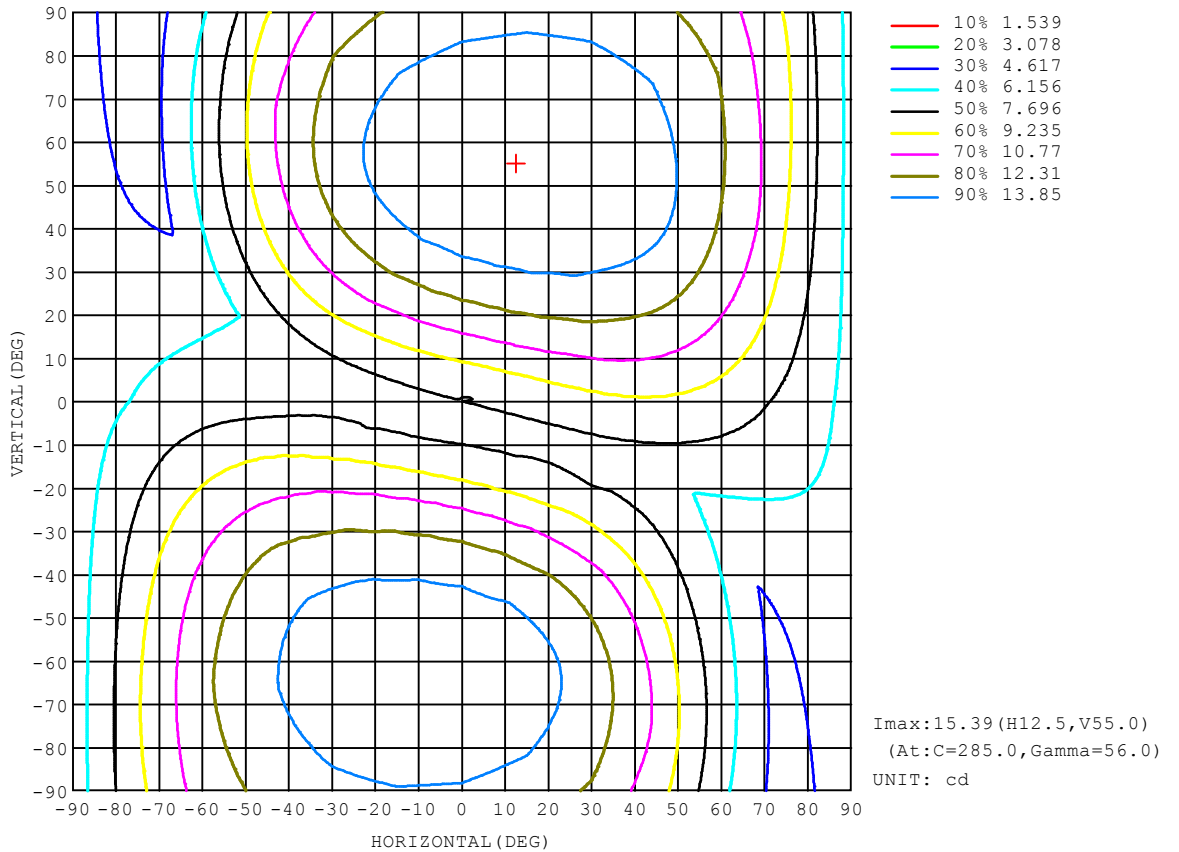
REFLECTANCE										
Ceiling	0.8	0.8	0.8	0.7	0.7	0.7	0.5	0.5	0.5	0
Walls	0.7	0.5	0.3	0.7	0.5	0.3	0.7	0.5	0.3	0
Working plane	0.2	0.2	0.2	0.2	0.2	0.2	0.2	0.2	0.2	0
ROOM INDEX	UTILIZATION FACTORS (PERCENT) $k(RI) \times RCR = 5$									
k = 0.60	39	25	18	37	25	17	35	23	17	10
0.80	47	33	24	45	32	24	41	30	22	14
1.00	55	40	31	52	39	30	47	38	28	18
1.25	61	47	37	58	45	36	53	42	34	22
1.50	67	53	43	63	50	41	57	46	38	25
2.00	75	62	52	70	59	50	63	53	46	31
2.50	80	68	58	75	64	56	67	58	51	34
3.00	84	73	64	79	69	61	70	62	55	38
4.00	89	79	71	84	75	68	74	67	61	42
5.00	93	84	77	87	80	73	77	71	66	45
ROOM INDEX	UF(total)									Direct
According to DIN EN 13032-2 2004			Suspended				SHRNOM = 1.25			

C Range: 0 - 360DEG  
 C Interval: 15.0DEG  
 Test Speed: HIGH  
 Temperature:25.3DEG  
 Operators:NSZ  
 Test Date:2018-1-5

$\gamma$  Range: 0 - 180DEG  
 $\gamma$  Interval: 1.0DEG  
 Test System:EVERFINE GO-R5000\_V2 SYSTEM V2.0.366  
 Humidity:65.0%  
 Test Distance:1.900m [K=1.3255]  
 Remarks:

ISOCANDELA DIAGRAM

Test:U:3.9950V I:0.3303A P:1.3195W PF:1.0000 Freq:0Hz Lamp Flux:106.717x1 lm		
	TYPE:	WEIGHT:
SPEC.:	DIM.:	SERIAL No.:
		Shielding Angle:

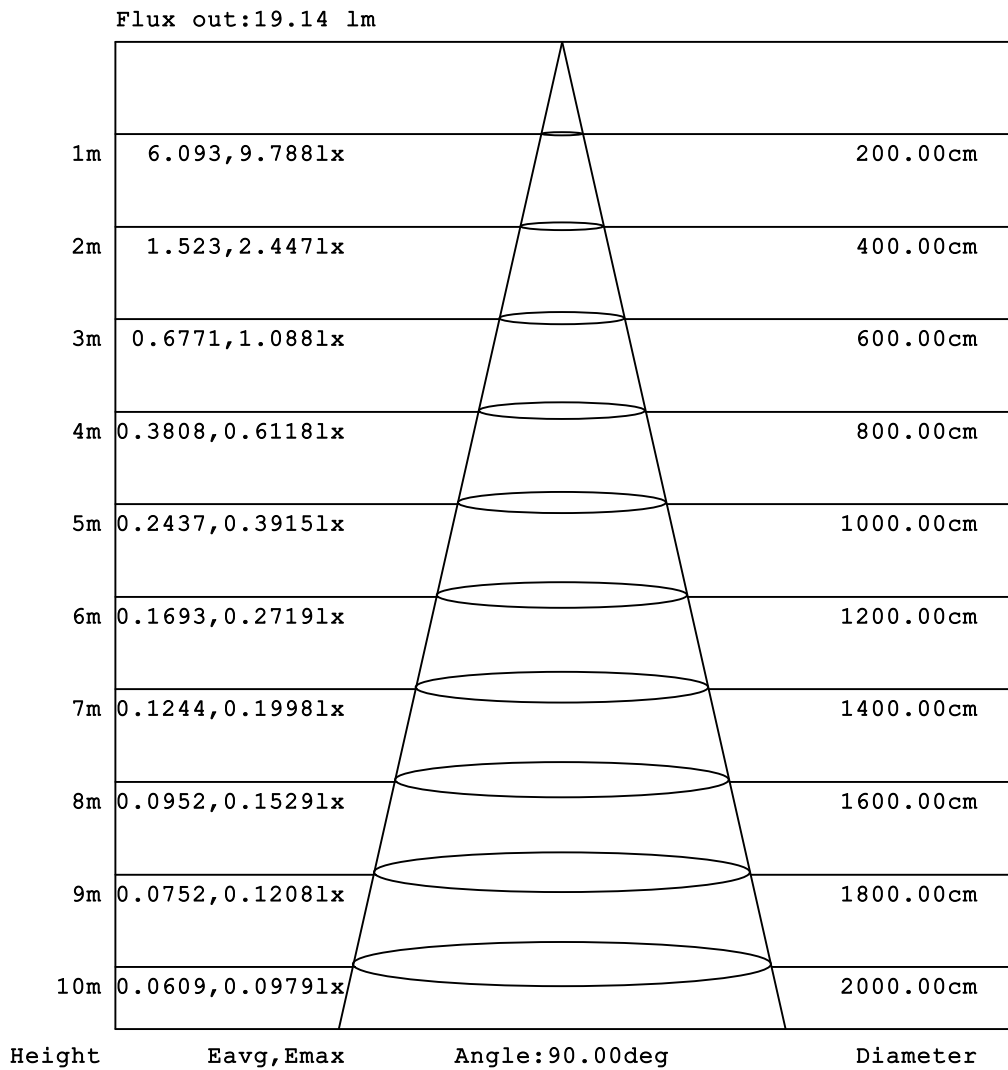


C Range: 0 - 360DEG  
 C Interval: 15.0DEG  
 Test Speed: HIGH  
 Temperature:25.3DEG  
 Operators:NSZ  
 Test Date:2018-1-5

γ Range: 0 - 180DEG  
 γ Interval: 1.0DEG  
 Test System:EVERFINE GO-R5000\_V2 SYSTEM V2.0.366  
 Humidity:65.0%  
 Test Distance:1.900m [K=1.3255]  
 Remarks:

**AAI Figure**

Test:U:3.9950V I:0.3303A P:1.13195W PF:1.0000 Freq:0Hz Lamp Flux:106.717x1 lm		
	TYPE:	WEIGHT:
SPEC.:	DIM.:	SERIAL No.:
		Shielding Angle:



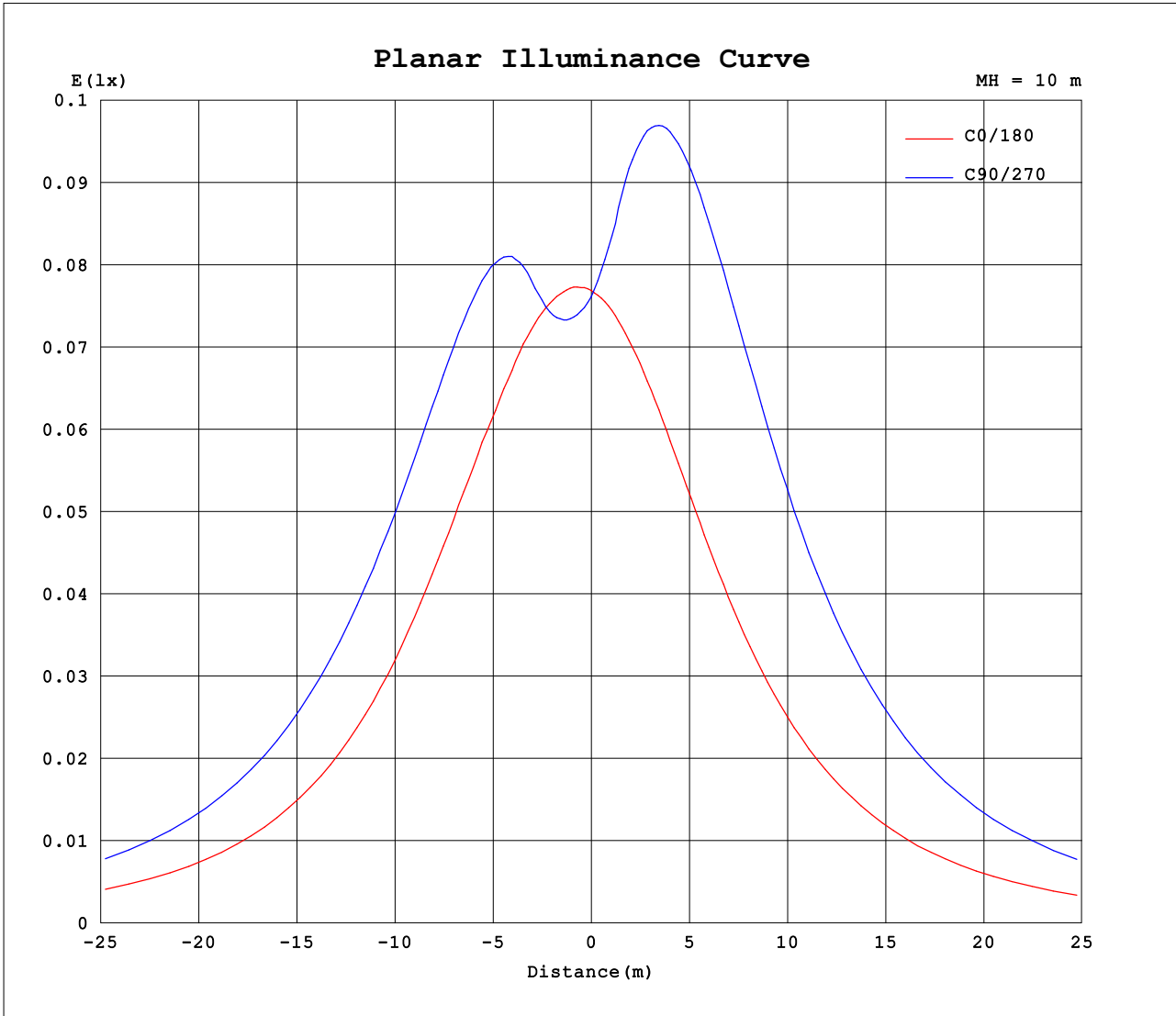
Note:The Curves indicate the illuminated area and the average illumination when the luminaire is at different distance.

C Range: 0 - 360DEG  
 C Interval: 15.0DEG  
 Test Speed: HIGH  
 Temperature:25.3DEG  
 Operators:NSZ  
 Test Date:2018-1-5

γ Range: 0 - 180DEG  
 γ Interval: 1.0DEG  
 Test System:EVERFINE GO-R5000\_V2 SYSTEM V2.0.366  
 Humidity:65.0%  
 Test Distance:1.900m [K=1.3255]  
 Remarks:



Planar Illuminance Curve



C Range: 0 - 360DEG  
 C Interval: 15.0DEG  
 Test Speed: HIGH  
 Temperature: 25.3DEG  
 Operators: NSZ  
 Test Date: 2018-1-5

$\gamma$  Range: 0 - 180DEG  
 $\gamma$  Interval: 1.0DEG  
 Test System: EVERFINE GO-R5000\_V2 SYSTEM V2.0.366  
 Humidity: 65.0%  
 Test Distance: 1.900m [K=1.3255]  
 Remarks:

LUMINOUS DISTRIBUTION INTENSITY DATA

Test:U:3.9950V I:0.3303A P:1.3195W PF:1.0000 Freq:0Hz Lamp Flux:106.717x1 lm		
	TYPE:	WEIGHT:
SPEC.:	DIM.:	SERIAL No.:
		Shielding Angle:

Table--1

UNIT: cd

C (DEG) γ (DEG)	0	15	30	45	60	75	90	105	120	135	150	165	180	195	210	225	240	255	270
0	7.69	7.69	7.68	7.66	7.64	7.63	7.62	7.60	7.58	7.57	7.56	7.56	7.69	7.69	7.68	7.66	7.64	7.63	7.62
5	7.82	7.69	7.59	7.52	7.48	7.46	7.45	7.43	7.41	7.39	7.38	7.40	7.59	7.69	7.81	7.96	8.12	8.24	8.31
10	7.98	7.68	7.53	7.49	7.55	7.64	7.71	7.71	7.65	7.53	7.42	7.35	7.51	7.67	8.00	8.41	8.84	9.22	9.45
15	8.17	7.67	7.50	7.59	7.87	8.23	8.49	8.54	8.41	8.05	7.69	7.41	7.43	7.65	8.21	8.98	9.74	10.3	10.6
20	8.37	7.65	7.50	7.82	8.51	9.25	9.68	9.78	9.57	8.99	8.25	7.58	7.38	7.61	8.43	9.59	10.6	11.3	11.7
25	8.56	7.61	7.53	8.24	9.40	10.3	10.8	10.9	10.7	10.0	9.04	7.87	7.33	7.55	8.70	10.1	11.3	12.1	12.6
30	8.77	7.53	7.60	8.82	10.3	11.3	11.9	12.0	11.7	10.9	9.82	8.28	7.27	7.45	8.94	10.6	12.0	12.9	13.4
35	8.94	7.41	7.69	9.44	11.1	12.2	12.8	12.8	12.5	11.8	10.5	8.76	7.22	7.29	9.13	11.0	12.5	13.5	14.0
40	9.04	7.21	7.81	9.99	11.8	12.9	13.5	13.6	13.2	12.5	11.1	9.17	7.16	7.08	9.22	11.4	13.0	14.0	14.5
45	9.05	6.95	7.92	10.5	12.4	13.6	14.1	14.2	13.8	13.1	11.6	9.52	7.10	6.80	9.23	11.6	13.3	14.4	14.9
50	8.97	6.64	8.06	10.8	12.9	14.1	14.6	14.6	14.3	13.5	12.1	9.82	7.06	6.46	9.14	11.7	13.5	14.6	15.1
55	8.81	6.25	8.09	11.1	13.2	14.4	14.8	14.9	14.6	13.8	12.4	10.0	7.02	6.07	8.98	11.7	13.6	14.7	15.2
60	8.55	5.84	8.05	11.2	13.5	14.6	15.0	15.0	14.7	14.0	12.6	10.1	6.92	5.65	8.72	11.6	13.6	14.7	15.2
65	8.21	5.40	7.94	11.2	13.5	14.6	15.0	15.0	14.7	14.0	12.6	10.1	6.76	5.22	8.40	11.4	13.5	14.5	15.0
70	7.80	4.97	7.76	11.2	13.4	14.5	14.9	14.9	14.6	13.9	12.6	10.0	6.54	4.78	8.01	11.1	13.2	14.3	14.8
75	7.34	4.56	7.52	11.0	13.3	14.3	14.7	14.8	14.5	13.8	12.4	9.87	6.27	4.34	7.54	10.7	12.9	13.9	14.5
80	6.82	4.21	7.23	10.7	13.0	14.0	14.5	14.5	14.2	13.5	12.1	9.61	5.96	3.95	7.04	10.3	12.4	13.6	14.1
85	6.28	3.95	6.88	10.3	12.6	13.6	14.1	14.2	13.9	13.2	11.8	9.28	5.64	3.65	6.52	9.75	11.9	13.1	13.7
90	5.71	3.76	6.50	9.90	12.1	13.2	13.7	13.8	13.5	12.8	11.4	8.88	5.33	3.44	5.97	9.15	11.4	12.6	13.2
95	5.10	3.54	6.07	9.40	11.6	12.7	13.2	13.3	13.0	12.3	10.9	8.41	4.96	3.24	5.37	8.47	10.7	12.0	12.6
100	4.43	3.28	5.56	8.81	11.0	12.1	12.7	12.8	12.5	11.8	10.3	7.85	4.54	3.02	4.72	7.71	9.96	11.3	12.0
105	3.75	2.97	5.00	8.15	10.3	11.5	12.1	12.2	12.0	11.2	9.69	7.22	4.07	2.77	4.05	6.89	9.13	10.5	11.3
110	3.05	2.64	4.39	7.40	9.59	10.8	11.4	11.6	11.3	10.5	8.97	6.52	3.58	2.50	3.37	6.02	8.23	9.69	10.5
115	2.39	2.28	3.74	6.60	8.77	10.0	10.7	10.9	10.6	9.76	8.17	5.78	3.07	2.21	2.71	5.13	7.27	8.77	9.59
120	1.77	1.91	3.08	5.76	7.90	9.21	9.90	10.1	9.82	8.95	7.32	5.00	2.56	1.91	2.09	4.22	6.28	7.79	8.65
125	1.28	1.53	2.42	4.88	6.97	8.32	9.05	9.28	8.97	8.09	6.43	4.22	2.05	1.62	1.53	3.32	5.27	6.76	7.63
130	0.91	1.15	1.78	4.00	6.02	7.38	8.14	8.39	8.07	7.17	5.53	3.46	1.58	1.32	1.13	2.44	4.24	5.68	6.55
135	0.60	0.80	1.19	3.13	5.03	6.39	7.16	7.41	7.10	6.19	4.63	2.73	1.16	1.04	0.86	1.61	3.22	4.58	5.42
140	0.37	0.51	0.69	2.31	4.05	5.35	6.11	6.37	6.07	5.18	3.74	2.03	0.84	0.75	0.62	0.87	2.22	3.44	4.24
145	0.20	0.30	0.35	1.55	3.08	4.27	5.00	5.25	4.98	4.15	2.86	1.38	0.59	0.52	0.41	0.32	1.26	2.31	3.03
150	0.10	0.15	0.18	0.89	2.14	3.18	3.85	4.08	3.86	3.10	2.00	0.81	0.39	0.33	0.25	0.15	0.44	1.22	1.83
155	0.04	0.07	0.08	0.36	1.27	2.12	2.68	2.89	2.69	2.07	1.21	0.34	0.22	0.19	0.14	0.08	0.03	0.29	0.72
160	0.01	0.02	0.03	0.05	0.50	1.11	1.53	1.70	1.57	1.11	0.51	0.05	0.09	0.08	0.06	0.02	0.00	0.00	0.01
165	0.00	0.00	0.00	0.00	0.04	0.30	0.53	0.64	0.58	0.31	0.06	0.00	0.00	0.00	0.00	0.00	0.00	0.00	0.00
170	0.00	0.00	0.00	0.00	0.00	0.00	0.00	0.02	0.01	0.00	0.00	0.00	0.00	0.00	0.00	0.00	0.00	0.00	0.00
175	0.00	0.00	0.00	0.00	0.00	0.00	0.00	0.00	0.00	0.00	0.00	0.00	0.00	0.00	0.00	0.00	0.00	0.00	0.00
180	0.00	0.00	0.00	0.00	0.00	0.00	0.00	0.00	0.00	0.00	0.00	0.00	0.00	0.00	0.00	0.00	0.00	0.00	0.00

C Range: 0 - 360DEG  
 C Interval: 15.0DEG  
 Test Speed: HIGH  
 Temperature:25.3DEG  
 Operators:NSZ  
 Test Date:2018-1-5

γ Range: 0 - 180DEG  
 γ Interval: 1.0DEG  
 Test System:EVERFINE GO-R5000\_V2 SYSTEM V2.0.366  
 Humidity:65.0%  
 Test Distance:1.900m [K=1.3255]  
 Remarks:

**LUMINOUS DISTRIBUTION INTENSITY DATA**

Test:U:3.9950V I:0.3303A P:1.3195W PF:1.0000 Freq:0Hz Lamp Flux:106.717x1 lm		
	TYPE:	WEIGHT:
SPEC.:	DIM.:	SERIAL No.:
		Shielding Angle:

Table--2

UNIT: cd

C (DEG) γ (DEG)	285	300	315	330	345														
0	7.60	7.58	7.57	7.56	7.56														
5	8.31	8.26	8.16	8.01	7.84														
10	9.49	9.39	9.12	8.70	8.28														
15	10.7	10.6	10.2	9.59	8.79														
20	11.8	11.6	11.2	10.4	9.38														
25	12.7	12.6	12.1	11.2	9.95														
30	13.5	13.4	12.8	11.9	10.5														
35	14.2	14.1	13.5	12.5	10.9														
40	14.7	14.6	14.0	13.0	11.3														
45	15.1	15.0	14.4	13.4	11.6														
50	15.3	15.2	14.7	13.7	11.7														
55	15.4	15.3	14.8	13.8	11.8														
60	15.4	15.3	14.8	13.8	11.7														
65	15.2	15.1	14.7	13.7	11.5														
70	15.0	14.9	14.5	13.4	11.2														
75	14.7	14.6	14.1	13.0	10.7														
80	14.3	14.2	13.7	12.6	10.2														
85	13.9	13.8	13.2	12.1	9.69														
90	13.4	13.3	12.7	11.5	9.09														
95	12.8	12.7	12.1	10.8	8.41														
100	12.2	12.0	11.4	10.0	7.64														
105	11.5	11.2	10.6	9.18	6.81														
110	10.7	10.4	9.69	8.25	5.93														
115	9.84	9.55	8.74	7.26	5.01														
120	8.90	8.58	7.73	6.23	4.08														
125	7.89	7.55	6.67	5.17	3.16														
130	6.80	6.45	5.56	4.10	2.27														
135	5.66	5.30	4.43	3.03	1.45														
140	4.46	4.12	3.28	2.03	0.79														
145	3.23	2.92	2.19	1.13	0.39														
150	2.01	1.78	1.18	0.42	0.23														
155	0.89	0.76	0.36	0.07	0.12														
160	0.07	0.05	0.00	0.01	0.04														
165	0.00	0.00	0.00	0.00	0.00														
170	0.00	0.00	0.00	0.00	0.00														
175	0.00	0.00	0.00	0.00	0.00														
180	0.00	0.00	0.00	0.00	0.00														

C Range: 0 - 360DEG  
 C Interval: 15.0DEG  
 Test Speed: HIGH  
 Temperature:25.3DEG  
 Operators: NSZ  
 Test Date:2018-1-5

γ Range: 0 - 180DEG  
 γ Interval: 1.0DEG  
 Test System:EVERFINE GO-R5000\_V2 SYSTEM V2.0.366  
 Humidity:65.0%  
 Test Distance:1.900m [K=1.3255]  
 Remarks: