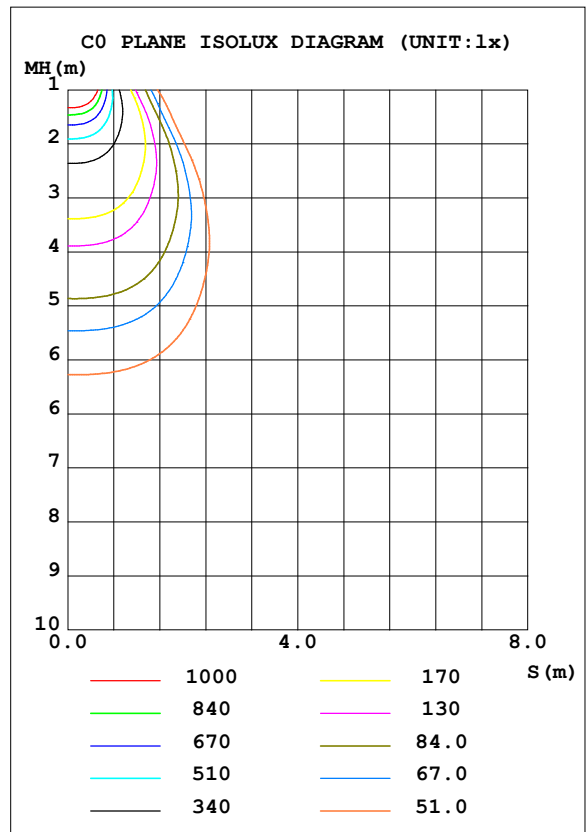
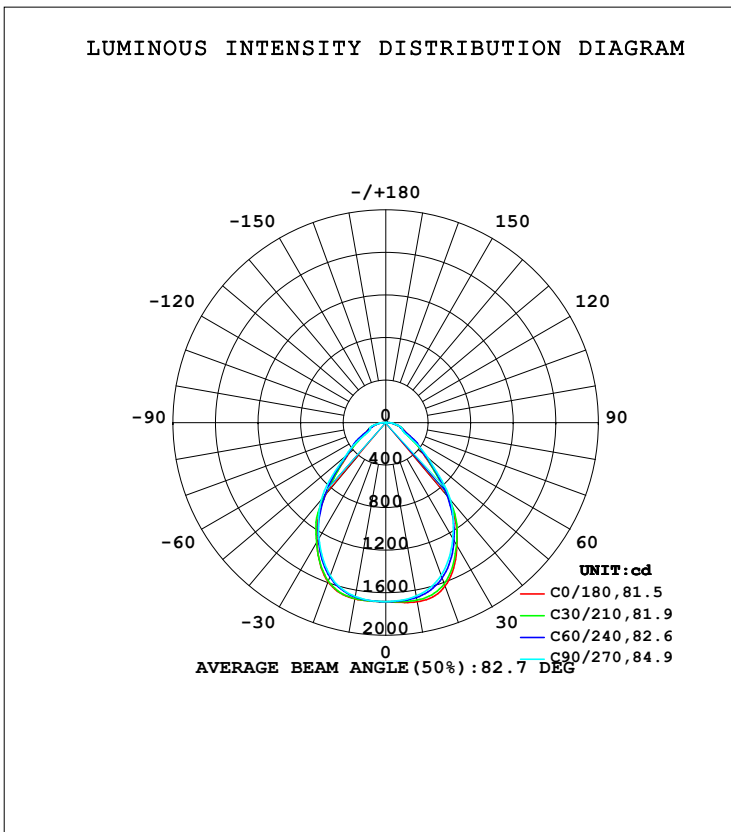


LUMINAIRE PHOTOMETRIC TEST REPORT

Test:U:221.10V I:0.1680A P:36.100W PF:0.9720 Freq:50.00Hz Lamp Flux:3229.03x1 lm		
NAME: UGR19-LPE36W-120/30	TYPE:	WEIGHT:
SPEC.:	DIM.:	SERIAL No.:
MFR.:	SUR.:	Shielding Angle:

DATA OF LAMP		PHOTOMETRIC DATA Eff: 89.45 lm/W			
MODEL		I _{max} (cd)	1710	S/MH (C0/180)	1.16
NOMINAL POWER (W)		LOR (%)	100.0	S/MH (C90/270)	1.13
RATED VOLTAGE (V)		TOTAL FLUX (lm)	3229.0	η UP, DN (C0-180)	0.1, 50.5
NOMINAL FLUX (lm)	3229.03	CIE CLASS	DIRECT	η UP, DN (C180-360)	0.1, 49.3
LAMPS INSIDE	1	η up (%)	0.1	CIBSE SHR NOM	1.00
TEST VOLTAGE (V)		η down (%)	99.9	CIBSE SHR MAX	1.15



C Range: 0 - 360DEG
 C Interval: 15.0DEG
 Test Speed: HIGH
 Temperature: 25.3DEG
 Operators: YU
 Test Date: 2019-04-19

γ Range: 0 - 100DEG
 γ Interval: 1.0DEG
 Test System: EVERFINE GO-2000B_V1 SYSTEM V2.0.402
 Humidity: 65.0%
 Test Distance: 7.460m [K=1.0000]
 Remarks:

ZONAL FLUX DIAGRAM

ZONAL FLUX DIAGRAM:

γ	C0	C45	C90	C135	C180	C225	C270	C315	γ	Φ zone	Φ total	%lum,lamp
10	1710	1680	1655	1667	1683	1670	1660	1686	0- 10	160.5	160.5	4.97,4.97
20	1635	1585	1527	1566	1592	1562	1530	1576	10- 20	462.5	623.1	19.3,19.3
30	1341	1312	1261	1300	1298	1283	1258	1288	20- 30	663.7	1287	39.8,39.8
40	907.9	907.4	946.8	910.4	876.8	868.9	943.6	858.8	30- 40	691.9	1979	61.3,61.3
50	468.5	511.6	519.1	519.1	458.0	494.2	504.1	483.7	40- 50	517.9	2497	77.3,77.3
60	268.9	298.6	229.8	290.8	258.3	279.8	229.4	272.8	50- 60	333.3	2830	87.6,87.6
70	166.6	158.4	167.4	157.4	167.8	147.9	162.4	142.2	60- 70	207.7	3038	94.1,94.1
80	82.08	89.04	88.75	94.05	85.68	86.70	81.69	84.51	70- 80	132.4	3170	98.2,98.2
90	5.197	9.143	4.398	12.72	2.182	2.737	2.765	2.702	80- 90	54.59	3225	99.9,99.9
100	4.681	5.257	5.751	5.198	3.552	3.981	4.416	4.017	90-100	4.189	3229	100,100
110	0	0	0	0	0	0	0	0	100-110	0.2482	3229	100,100
120	0	0	0	0	0	0	0	0	110-120	0	3229	100,100
130	0	0	0	0	0	0	0	0	120-130	0	3229	100,100
140	0	0	0	0	0	0	0	0	130-140	0	3229	100,100
150	0	0	0	0	0	0	0	0	140-150	0	3229	100,100
160	0	0	0	0	0	0	0	0	150-160	0	3229	100,100
170	0	0	0	0	0	0	0	0	160-170	0	3229	100,100
180	0	0	0	0	0	0	0	0	170-180	0	3229	100,100
DEG	LUMINOUS INTENSITY:cd									UNIT:lm		

Conical surface Flux(90deg): 2266.1 lm

%lum = 70.2%

%lamp = 70.2%

Conical surface Flux(120deg): 2829.9 lm

%lum = 87.6%

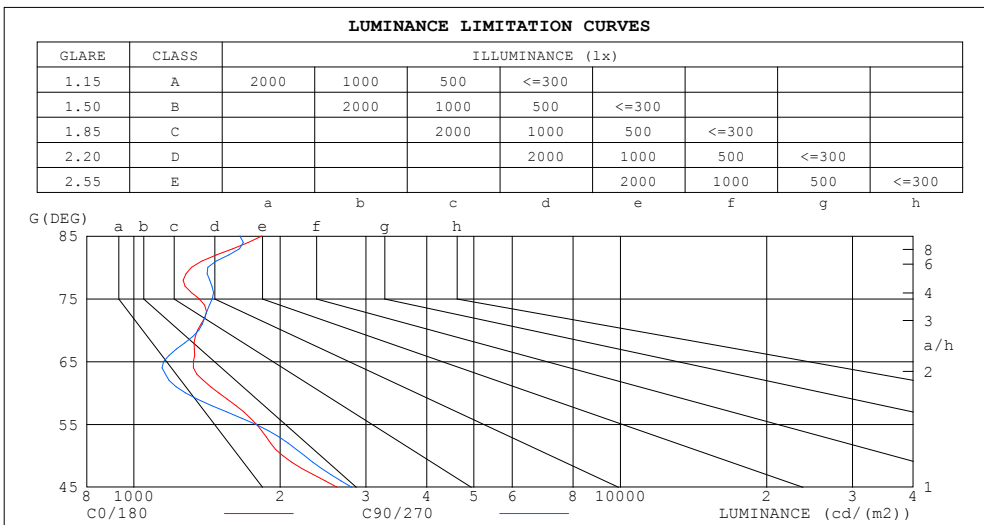
%lamp = 87.6%

C Range: 0 - 360DEG
 C Interval: 15.0DEG
 Test Speed: HIGH
 Temperature:25.3DEG
 Operators:YU
 Test Date:2019-04-19

γ Range: 0 - 100DEG
 γ Interval: 1.0DEG
 Test System:EVERFINE GO-2000B_V1 SYSTEM V2.0.402
 Humidity:65.0%
 Test Distance:7.460m [K=1.0000]
 Remarks:

LUMINANCE LIMITATION CURVES

Test:U:221.10V I:0.1680A P:36.100W PF:0.9720 Freq:50.00Hz Lamp Flux:3229.03x1 lm		
NAME: UGR19-LPE36W-120/30	TYPE:	WEIGHT:
SPEC.:	DIM.:	SERIAL No.:
MFR.:	SUR.:	Shielding Angle:



LUMINANCE cd/(m2)		
G (DEG)	C0/180	C90/270
85	1834	1653
80	1313	1420
75	1362	1450
70	1353	1360
65	1325	1152
60	1494	1277
55	1786	1780
50	2025	2243
45	2620	2807

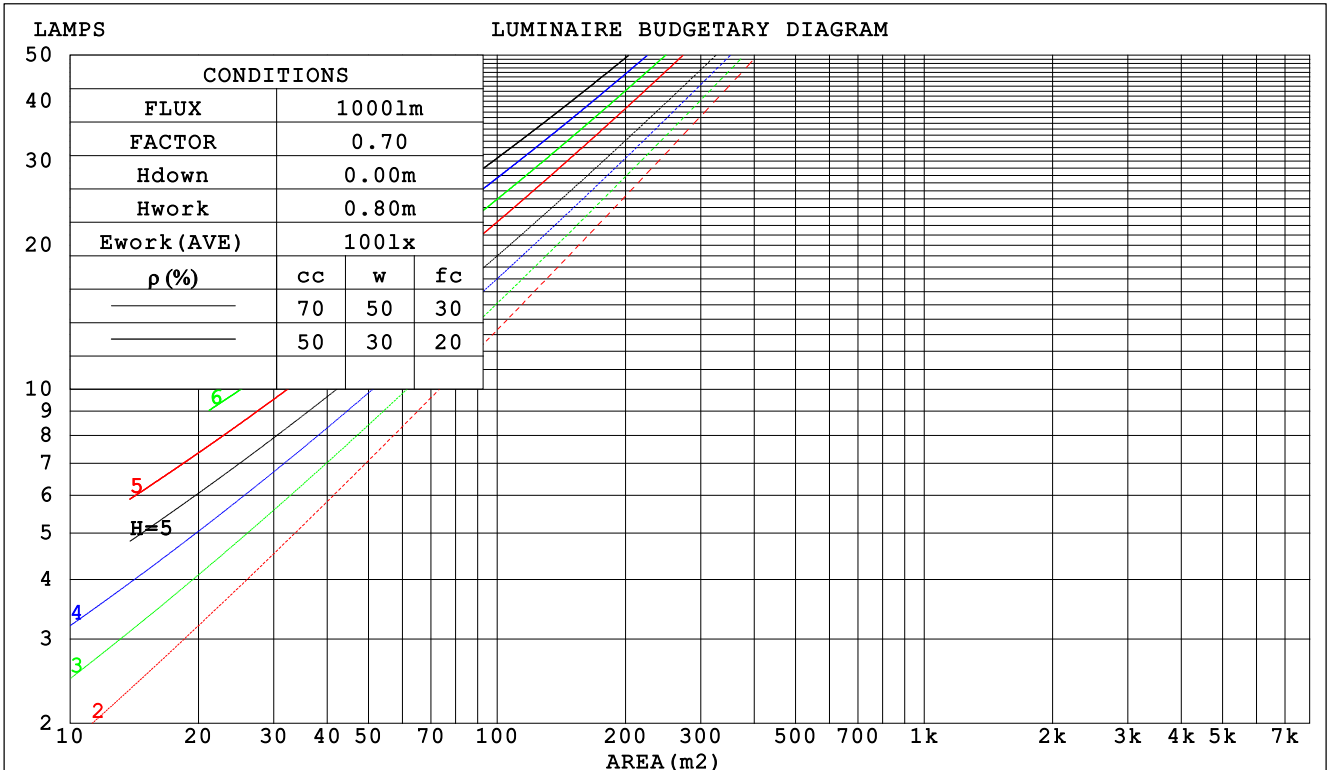
C Range: 0 - 360DEG
 C Interval: 15.0DEG
 Test Speed: HIGH
 Temperature: 25.3DEG
 Operators: YU
 Test Date: 2019-04-19

γ Range: 0 - 100DEG
 γ Interval: 1.0DEG
 Test System: EVERFINE GO-2000B_V1 SYSTEM V2.0.402
 Humidity: 65.0%
 Test Distance: 7.460m [K=1.0000]
 Remarks:

CU AND LUMINAIRE BUDGETARY ESTIMATE DIAGRAM

Test:U:221.10V I:0.1680A P:36.100W PF:0.9720 Freq:50.00Hz Lamp Flux:3229.03x1 lm		
NAME: UGR19-LPE36W-120/30	TYPE:	WEIGHT:
SPEC.:	DIM.:	SERIAL No.:
MFR.:	SUR.:	Shielding Angle:

ρcc	80%			70%			50%			30%			10%			0
ρw	50%	30%	10%	50%	30%	10%	50%	30%	10%	50%	30%	10%	50%	30%	10%	0
ρfc	20%			20%			20%			20%			20%			0
RCR	RCR:Room Cavity Ratio															
	Coefficients of Utilization(CU)															
0.0	1.19	1.19	1.19	1.16	1.16	1.16	1.11	1.11	1.11	1.06	1.06	1.06	1.02	1.02	1.02	.00
1.0	1.06	1.03	.99	1.04	1.01	.98	.90	.97	.94	.96	.94	.92	.92	.91	.89	.87
2.0	.95	.89	.84	.93	.88	.83	.90	.85	.81	.86	.83	.79	.83	.80	.78	.76
3.0	.85	.78	.73	.84	.77	.72	.81	.75	.71	.78	.73	.69	.76	.72	.68	.66
4.0	.77	.69	.63	.76	.69	.63	.73	.67	.62	.71	.66	.61	.69	.64	.61	.59
5.0	.70	.62	.56	.69	.61	.56	.67	.60	.55	.65	.59	.55	.63	.58	.54	.52
6.0	.64	.56	.50	.63	.55	.50	.61	.55	.50	.60	.54	.49	.58	.53	.49	.47
7.0	.59	.51	.45	.58	.50	.45	.56	.50	.45	.55	.49	.45	.54	.48	.44	.42
8.0	.54	.46	.41	.53	.46	.41	.52	.46	.41	.51	.45	.41	.50	.44	.40	.39
9.0	.50	.43	.38	.50	.42	.37	.48	.42	.37	.47	.41	.37	.46	.41	.37	.35
10.0	.47	.39	.34	.46	.39	.34	.45	.39	.34	.44	.38	.34	.43	.38	.34	.32



C Range: 0 - 360DEG
 C Interval: 15.0DEG
 Test Speed: HIGH
 Temperature:25.3DEG
 Operators:YU
 Test Date:2019-04-19

γ Range: 0 - 100DEG
 γ Interval: 1.0DEG
 Test System:EVERFINE GO-2000B_V1 SYSTEM V2.0.402
 Humidity:65.0%
 Test Distance:7.460m [K=1.0000]
 Remarks:

WEC AND CCEC

Test:U:221.10V I:0.1680A P:36.100W PF:0.9720 Freq:50.00Hz Lamp Flux:3229.03x1 lm		
NAME: UGR19-LPE36W-120/30	TYPE:	WEIGHT:
SPEC.:	DIM.:	SERIAL No.:
MFR.:	SUR.:	Shielding Angle:

ρcc	80%			70%			50%			30%			10%			0
ρw	50%	30%	10%	50%	30%	10%	50%	30%	10%	50%	30%	10%	50%	30%	10%	0
ρfc	20%			20%			20%			20%			20%			0
RCR	RCR:Room Cavity Ratio						Wall Exitance Coefficients (WEC)									
0.0																
1.0	.265	.151	.048	.258	.147	.047	.245	.140	.045	.233	.134	.043	.221	.128	.041	
2.0	.249	.136	.042	.243	.134	.041	.231	.129	.040	.221	.124	.039	.211	.119	.038	
3.0	.232	.124	.037	.227	.122	.037	.217	.118	.036	.208	.114	.035	.199	.110	.034	
4.0	.217	.113	.033	.212	.111	.033	.203	.108	.032	.195	.105	.032	.187	.102	.031	
5.0	.202	.103	.030	.198	.102	.030	.190	.099	.029	.183	.097	.029	.176	.094	.028	
6.0	.189	.095	.027	.186	.094	.027	.179	.092	.027	.172	.090	.026	.166	.088	.026	
7.0	.178	.088	.025	.175	.087	.025	.169	.085	.025	.163	.083	.024	.157	.082	.024	
8.0	.168	.082	.023	.165	.081	.023	.159	.080	.023	.154	.078	.023	.149	.077	.022	
9.0	.158	.077	.021	.156	.076	.021	.151	.075	.021	.146	.073	.021	.142	.072	.021	
10.0	.150	.072	.020	.147	.071	.020	.143	.070	.020	.139	.069	.020	.135	.068	.019	

ρcc	80%			70%			50%			30%			10%			0
ρw	50%	30%	10%	50%	30%	10%	50%	30%	10%	50%	30%	10%	50%	30%	10%	0
ρfc	20%			20%			20%			20%			20%			0
RCR	RCR:Room Cavity Ratio						Ceiling Cavity Exitance Coefficients (CCEC)									
0.0	.192	.192	.192	.164	.164	.164	.112	.112	.112	.064	.064	.064	.021	.021	.021	
1.0	.178	.158	.139	.153	.135	.120	.104	.093	.083	.060	.054	.048	.019	.017	.016	
2.0	.168	.133	.104	.144	.115	.090	.098	.079	.063	.057	.046	.037	.018	.015	.012	
3.0	.158	.115	.081	.136	.099	.070	.093	.069	.049	.054	.040	.029	.017	.013	.009	
4.0	.150	.101	.064	.129	.088	.056	.088	.061	.039	.051	.036	.023	.016	.012	.008	
5.0	.142	.091	.052	.122	.078	.046	.084	.055	.032	.049	.032	.019	.016	.010	.006	
6.0	.135	.082	.044	.116	.071	.038	.080	.050	.027	.046	.029	.016	.015	.010	.005	
7.0	.129	.075	.037	.111	.065	.032	.076	.045	.023	.044	.027	.014	.014	.009	.005	
8.0	.123	.069	.032	.106	.060	.028	.073	.042	.020	.042	.025	.012	.014	.008	.004	
9.0	.117	.064	.028	.101	.056	.025	.070	.039	.017	.041	.023	.010	.013	.008	.003	
10.0	.112	.060	.025	.096	.052	.022	.067	.036	.016	.039	.022	.009	.013	.007	.003	

C Range: 0 - 360DEG
 C Interval: 15.0DEG
 Test Speed: HIGH
 Temperature:25.3DEG
 Operators:YU
 Test Date:2019-04-19

γ Range: 0 - 100DEG
 γ Interval: 1.0DEG
 Test System:EVERFINE GO-2000B_V1 SYSTEM V2.0.402
 Humidity:65.0%
 Test Distance:7.460m [K=1.0000]
 Remarks:

UGR(Unified Glare Rating) Table

Test:U:221.10V I:0.1680A P:36.100W PF:0.9720 Freq:50.00Hz Lamp Flux:3229.03x1 lm										
NAME: UGR19-LPE36W-120/30					TYPE:			WEIGHT:		
SPEC.:					DIM.:			SERIAL No.:		
MFR.:					SUR.:			Shielding Angle:		
ceiling/cavity	0.7	0.7	0.5	0.5	0.3	0.7	0.7	0.5	0.5	0.3
walls	0.5	0.3	0.5	0.3	0.3	0.5	0.3	0.5	0.3	0.3
working plane	0.2	0.2	0.2	0.2	0.2	0.2	0.2	0.2	0.2	0.2
Room dimensions	Viewed crosswise					Viewed endwise				
x = 2H y = 2H	9.8	11.2	10.1	11.4	11.5	10.1	11.4	10.3	11.6	11.8
3H	10.7	11.9	11.0	12.2	12.4	11.0	12.2	11.3	12.5	12.7
4H	11.2	12.4	11.5	12.6	12.9	11.5	12.7	11.8	12.9	13.2
6H	11.7	12.8	12.0	13.0	13.3	11.9	13.0	12.3	13.3	13.6
8H	11.9	13.0	12.2	13.2	13.5	12.2	13.2	12.5	13.5	13.8
12H	12.2	13.2	12.5	13.5	13.7	12.4	13.4	12.7	13.7	14.0
4H 2H	10.2	11.3	10.5	11.6	11.8	10.3	11.5	10.6	11.7	12.0
3H	11.3	12.3	11.6	12.6	12.9	11.5	12.5	11.9	12.8	13.1
4H	12.0	12.9	12.3	13.2	13.5	12.2	13.1	12.5	13.4	13.7
6H	12.6	13.4	13.0	13.8	14.1	12.8	13.6	13.2	13.9	14.3
8H	12.9	13.7	13.3	14.1	14.4	13.1	13.8	13.5	14.2	14.6
12H	13.3	14.0	13.7	14.4	14.8	13.4	14.1	13.8	14.5	14.9
8H 4H	12.2	13.0	12.6	13.3	13.7	12.4	13.2	12.8	13.5	13.9
6H	13.0	13.7	13.5	14.1	14.5	13.2	13.8	13.6	14.2	14.6
8H	13.5	14.1	14.0	14.5	14.9	13.6	14.2	14.1	14.6	15.1
12H	14.0	14.5	14.5	15.0	15.4	14.1	14.5	14.5	15.0	15.5
12H 4H	12.2	12.9	12.7	13.3	13.7	12.4	13.1	12.8	13.5	13.9
6H	13.1	13.7	13.6	14.1	14.6	13.3	13.8	13.7	14.3	14.7
8H	13.7	14.1	14.1	14.6	15.1	13.8	14.3	14.2	14.7	15.2
Variations with the observer position at spacings:										
S = 1.0H	+ 0.4 / - 0.5					+ 0.4 / - 0.5				
1.5H	+ 0.3 / - 0.3					+ 0.1 / - 0.2				
2.0H	+ 0.7 / - 0.7					+ 0.7 / - 0.8				

CIE Pub.117, 3229 lm Total Lamp Luminous Flux Correct (8log(F/F0) = 4.1)

C Range: 0 - 360DEG
 C Interval: 15.0DEG
 Test Speed: HIGH
 Temperature:25.3DEG
 Operators:YU
 Test Date:2019-04-19

γ Range: 0 - 100DEG
 γ Interval: 1.0DEG
 Test System:EVERFINE GO-2000B_V1 SYSTEM V2.0.402
 Humidity:65.0%
 Test Distance:7.460m [K=1.0000]
 Remarks:

UTILIZATION FACTORS TABLE

Test:U:221.10V I:0.1680A P:36.100W PF:0.9720 Freq:50.00Hz Lamp Flux:3229.03x1 lm		
NAME: UGR19-LPE36W-120/30	TYPE:	WEIGHT:
SPEC.:	DIM.:	SERIAL No.:
MFR.:	SUR.:	Shielding Angle:

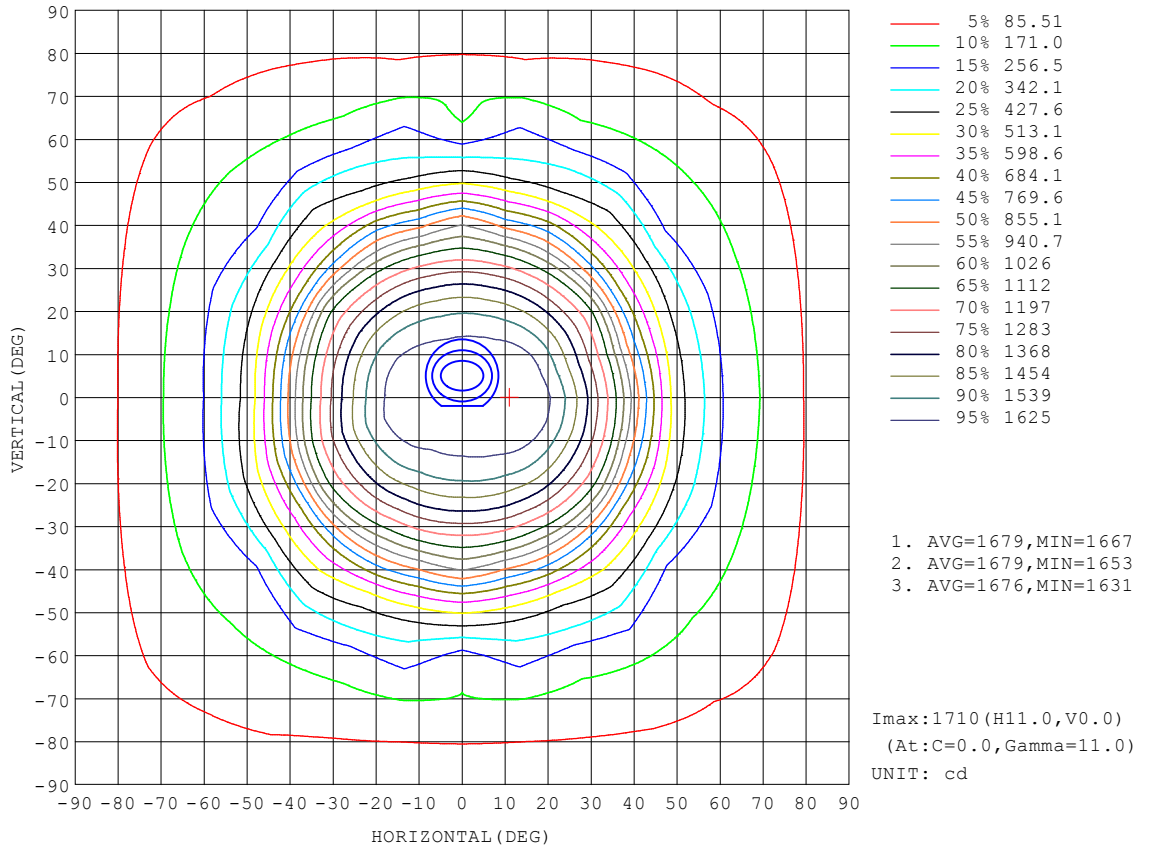
REFLECTANCE										
Ceiling	0.8	0.8	0.8	0.7	0.7	0.7	0.5	0.5	0.5	0
Walls	0.7	0.5	0.3	0.7	0.5	0.3	0.7	0.5	0.3	0
Working plane	0.2	0.2	0.2	0.2	0.2	0.2	0.2	0.2	0.2	0
ROOM INDEX	UTILIZATION FACTORS (PERCENT) $k(RI) \times RCR = 5$									
k = 0.60	67	58	52	67	57	52	66	57	51	46
0.80	77	67	61	76	67	61	74	66	61	55
1.00	84	75	69	83	75	69	81	75	68	62
1.25	90	82	76	89	81	76	87	80	75	69
1.50	95	87	81	93	86	80	90	84	79	73
2.00	100	93	88	98	92	87	95	90	85	79
2.50	103	97	92	101	95	91	97	93	89	81
3.00	106	100	95	104	98	94	100	96	92	84
4.00	109	104	100	107	102	99	102	99	96	88
5.00	111	107	103	108	105	102	104	101	99	90
ROOM INDEX	UF(total)									Direct
According to DIN EN 13032-2 2004			Suspended				SHRNOM = 1.25			

C Range: 0 - 360DEG
 C Interval: 15.0DEG
 Test Speed: HIGH
 Temperature:25.3DEG
 Operators:YU
 Test Date:2019-04-19

γ Range: 0 - 100DEG
 γ Interval: 1.0DEG
 Test System:EVERFINE GO-2000B_V1 SYSTEM V2.0.402
 Humidity:65.0%
 Test Distance:7.460m [K=1.0000]
 Remarks:

ISOCANDELA DIAGRAM

Test:U:221.10V I:0.1680A P:36.100W PF:0.9720 Freq:50.00Hz Lamp Flux:3229.03x1 lm		
NAME: UGR19-LPE36W-120/30	TYPE:	WEIGHT:
SPEC.:	DIM.:	SERIAL No.:
MFR.:	SUR.:	Shielding Angle:

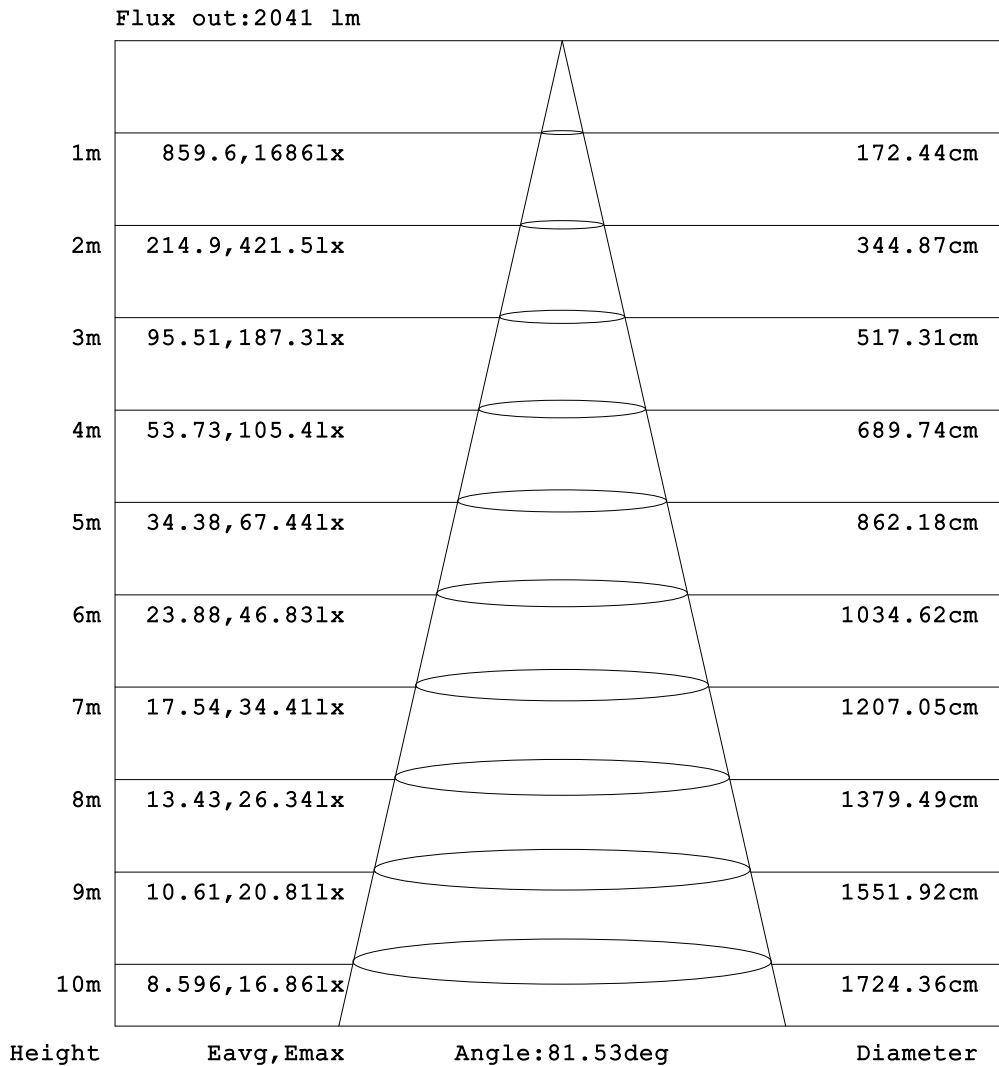


C Range: 0 - 360DEG
 C Interval: 15.0DEG
 Test Speed: HIGH
 Temperature:25.3DEG
 Operators:YU
 Test Date:2019-04-19

γ Range: 0 - 100DEG
 γ Interval: 1.0DEG
 Test System:EVERFINE GO-2000B_V1 SYSTEM V2.0.402
 Humidity:65.0%
 Test Distance:7.460m [K=1.0000]
 Remarks:

AAI Figure

Test:U:221.10V I:0.1680A P:36.100W PF:0.9720 Freq:50.00Hz Lamp Flux:3229.03x1 lm		
NAME: UGR19-LPE36W-120/30	TYPE:	WEIGHT:
SPEC.:	DIM.:	SERIAL No.:
MFR.:	SUR.:	Shielding Angle:



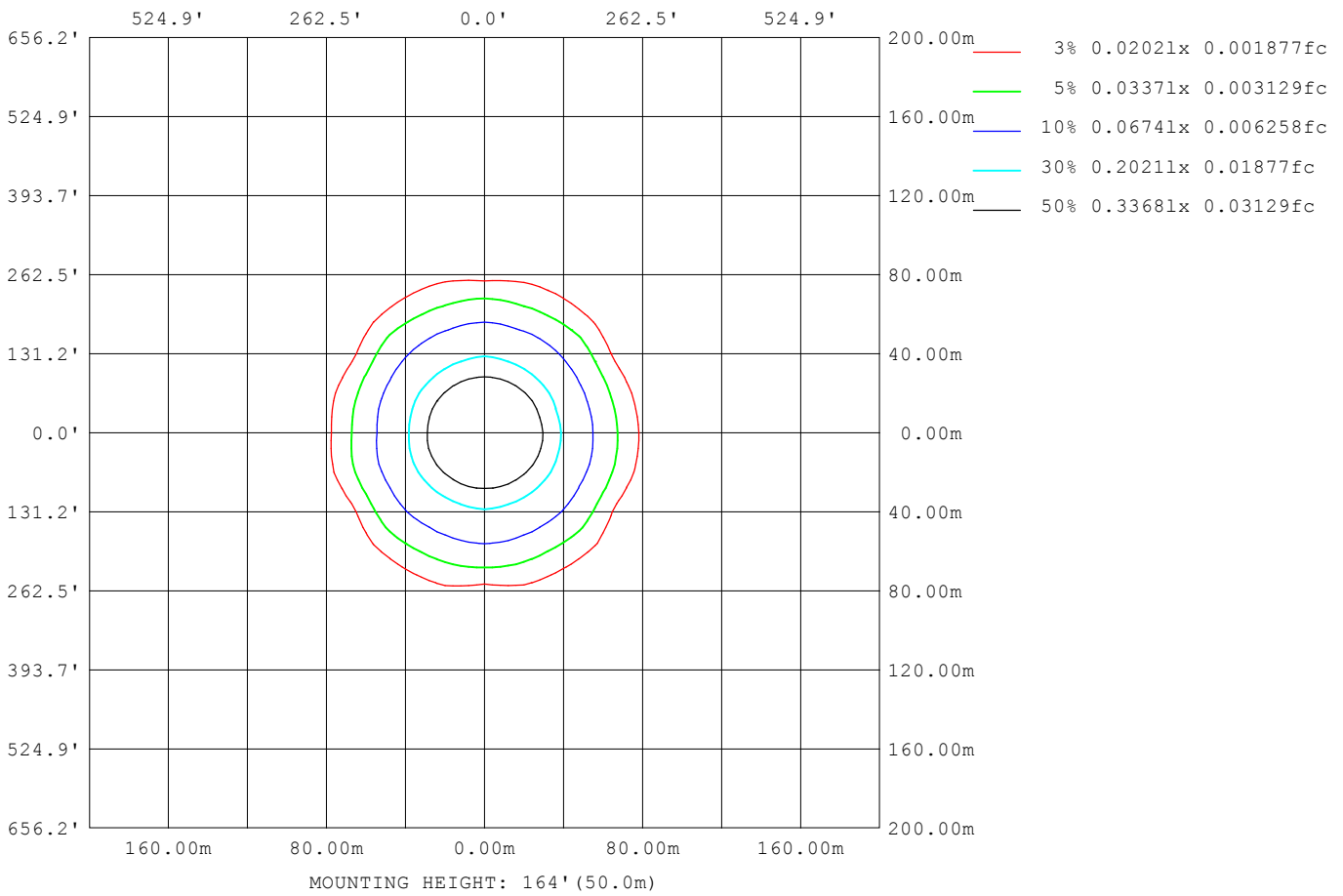
Note:The Curves indicate the illuminated area and the average illumination when the luminaire is at different distance.

C Range: 0 - 360DEG
 C Interval: 15.0DEG
 Test Speed: HIGH
 Temperature:25.3DEG
 Operators:YU
 Test Date:2019-04-19

γ Range: 0 - 100DEG
 γ Interval: 1.0DEG
 Test System:EVERFINE GO-2000B_V1 SYSTEM V2.0.402
 Humidity:65.0%
 Test Distance:7.460m [K=1.0000]
 Remarks:

ISOLUX DIAGRAM

Test:U:221.10V I:0.1680A P:36.100W PF:0.9720 Freq:50.00Hz Lamp Flux:3229.03x1 lm		
NAME: UGR19-LPE36W-120/30	TYPE:	WEIGHT:
SPEC.:	DIM.:	SERIAL No.:
MFR.:	SUR.:	Shielding Angle:



C Range: 0 - 360DEG
 C Interval: 15.0DEG
 Test Speed: HIGH
 Temperature:25.3DEG
 Operators:YU
 Test Date:2019-04-19

γ Range: 0 - 100DEG
 γ Interval: 1.0DEG
 Test System:EVERFINE GO-2000B_V1 SYSTEM V2.0.402
 Humidity:65.0%
 Test Distance:7.460m [K=1.0000]
 Remarks:

LED Avg.L Report

Test:U:221.10V I:0.1680A P:36.100W PF:0.9720 Freq:50.00Hz Lamp Flux:3229.03x1 lm		
NAME: UGR19-LPE36W-120/30	TYPE:	WEIGHT:
SPEC.:	DIM.:	SERIAL No.:
MFR.:	SUR.:	Shielding Angle:

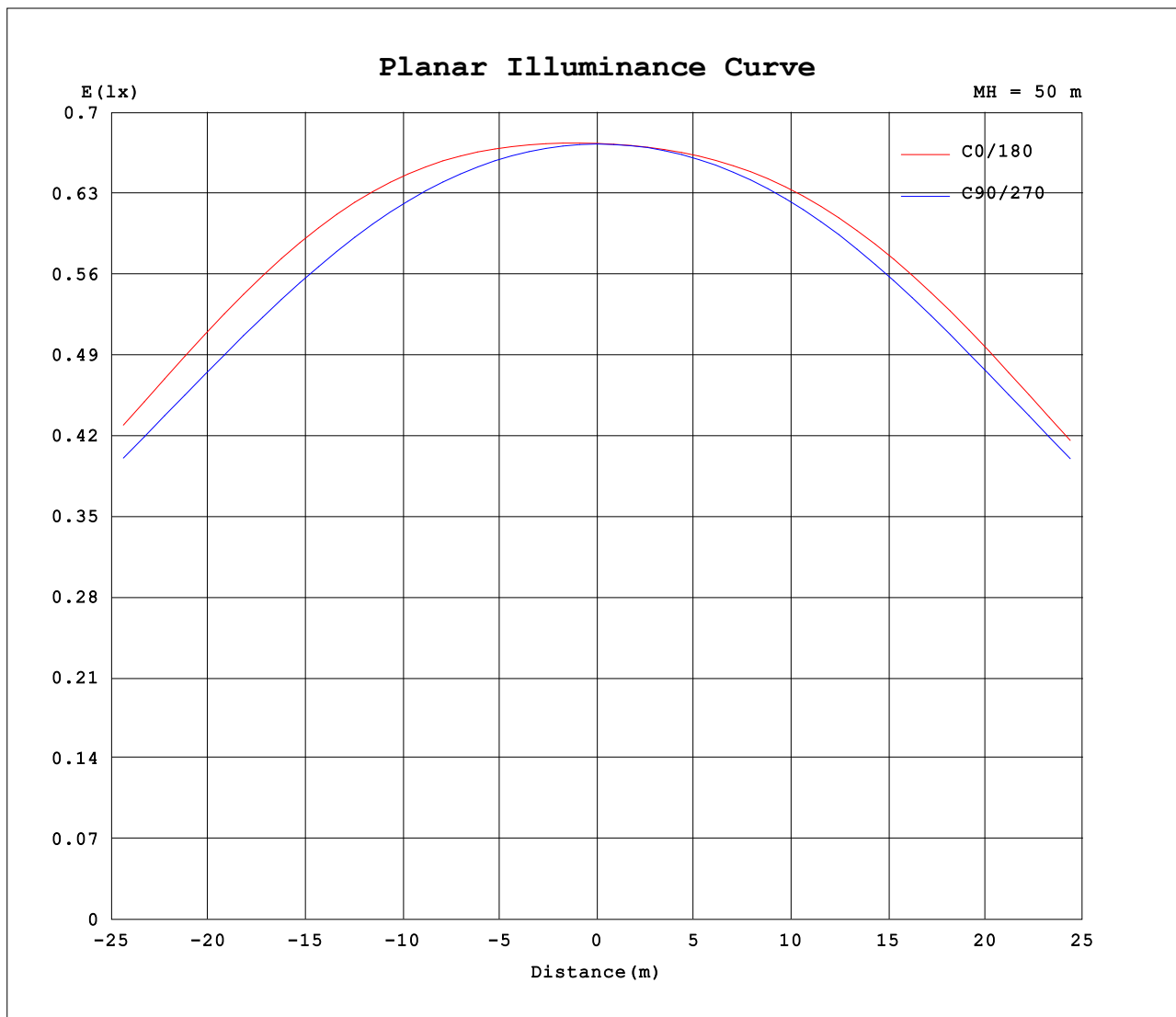
AvgL	cd/m2
L_0~180 (65) av	1321
L_0~180 (75) av	1354
L_0~180 (85) av	1818
L_90~270 (65) av	1112
L_90~270 (75) av	1466
L_90~270 (85) av	1551
L_45 (65) av	1487
L_45 (75) av	1336
L_45 (85) av	1662

Standard: GB/T 29293-2012

C Range: 0 - 360DEG
C Interval: 15.0DEG
Test Speed: HIGH
Temperature:25.3DEG
Operators:YU
Test Date:2019-04-19

γ Range: 0 - 100DEG
 γ Interval: 1.0DEG
Test System:EVERFINE GO-2000B_V1 SYSTEM V2.0.402
Humidity:65.0%
Test Distance:7.460m [K=1.0000]
Remarks:

Planar Illuminance Curve



C Range: 0 - 360DEG
 C Interval: 15.0DEG
 Test Speed: HIGH
 Temperature: 25.3DEG
 Operators: YU
 Test Date: 2019-04-19

γ Range: 0 - 100DEG
 γ Interval: 1.0DEG
 Test System: EVERFINE GO-2000B_V1 SYSTEM V2.0.402
 Humidity: 65.0%
 Test Distance: 7.460m [K=1.0000]
 Remarks:

LUMINOUS DISTRIBUTION INTENSITY DATA

Test:U:221.10V I:0.1680A P:36.100W PF:0.9720 Freq:50.00Hz Lamp Flux:3229.03x1 lm		
NAME: UGR19-LPE36W-120/30	TYPE:	WEIGHT:
SPEC.:	DIM.:	SERIAL No.:
MFR.:	SUR.:	Shielding Angle:

Table--1

UNIT: cd

C (DEG) γ (DEG)	0	15	30	45	60	75	90	105	120	135	150	165	180	195	210	225	240	255	270
0	1684	1684	1683	1682	1683	1682	1683	1684	1682	1684	1685	1684	1684	1684	1683	1682	1683	1682	1683
5	1696	1695	1690	1684	1682	1678	1676	1677	1675	1678	1681	1681	1683	1685	1683	1680	1680	1677	1679
10	1710	1706	1694	1680	1669	1660	1655	1656	1657	1667	1675	1681	1683	1684	1679	1670	1664	1658	1660
15	1698	1693	1676	1653	1630	1617	1608	1610	1614	1634	1651	1662	1659	1660	1653	1637	1622	1612	1614
20	1635	1632	1611	1585	1553	1537	1527	1529	1537	1566	1588	1605	1592	1590	1584	1562	1542	1527	1530
25	1509	1507	1489	1467	1435	1418	1407	1411	1421	1451	1472	1490	1463	1463	1460	1439	1421	1404	1406
30	1341	1343	1330	1312	1283	1270	1261	1265	1272	1300	1318	1332	1298	1300	1303	1283	1269	1255	1258
35	1151	1159	1164	1135	1106	1100	1109	1097	1099	1129	1158	1156	1113	1120	1143	1108	1092	1081	1102
40	908	898	918	907	904	895	947	899	905	910	921	917	877	879	891	869	890	872	944
45	667	675	650	675	684	681	714	679	686	679	658	683	640	646	637	654	678	662	716
50	469	491	494	512	488	502	519	502	490	519	503	507	458	476	479	494	481	482	504
55	369	373	343	401	385	387	368	388	391	405	349	388	361	366	340	400	379	367	365
60	269	277	226	299	283	304	230	311	288	291	232	283	258	276	232	280	287	306	229
65	202	212	181	233	194	240	175	242	201	234	191	221	200	211	188	224	195	240	163
70	167	158	162	158	158	182	167	183	165	157	163	172	168	168	163	148	157	175	162
75	127	127	130	126	133	124	135	127	133	128	133	137	125	128	128	123	123	119	138
80	82.1	91.5	85.8	89.0	90.0	87.2	88.7	87.4	91.9	94.0	91.9	96.5	85.7	92.0	84.1	86.7	87.0	80.7	81.7
85	57.5	60.9	50.7	54.1	45.2	53.5	51.9	55.5	49.7	58.8	57.3	69.3	56.5	59.7	49.3	49.8	44.9	46.9	45.5
90	5.20	9.44	5.30	9.14	5.47	7.29	4.40	8.32	6.63	12.7	9.89	20.0	2.18	2.42	2.49	2.74	2.93	2.96	2.76
95	3.70	3.82	3.96	4.22	4.43	4.62	4.67	4.61	4.40	4.15	3.85	3.62	2.75	2.79	2.98	3.13	3.34	3.45	3.54
100	4.68	4.79	4.97	5.26	5.49	5.70	5.75	5.69	5.46	5.20	4.86	4.59	3.55	3.61	3.79	3.98	4.23	4.34	4.42
105	0.00	0.00	0.00	0.00	0.00	0.00	0.00	0.00	0.00	0.00	0.00	0.00	0.00	0.00	0.00	0.00	0.00	0.00	0.00
110	0.00	0.00	0.00	0.00	0.00	0.00	0.00	0.00	0.00	0.00	0.00	0.00	0.00	0.00	0.00	0.00	0.00	0.00	0.00
115	0.00	0.00	0.00	0.00	0.00	0.00	0.00	0.00	0.00	0.00	0.00	0.00	0.00	0.00	0.00	0.00	0.00	0.00	0.00
120	0.00	0.00	0.00	0.00	0.00	0.00	0.00	0.00	0.00	0.00	0.00	0.00	0.00	0.00	0.00	0.00	0.00	0.00	0.00
125	0.00	0.00	0.00	0.00	0.00	0.00	0.00	0.00	0.00	0.00	0.00	0.00	0.00	0.00	0.00	0.00	0.00	0.00	0.00
130	0.00	0.00	0.00	0.00	0.00	0.00	0.00	0.00	0.00	0.00	0.00	0.00	0.00	0.00	0.00	0.00	0.00	0.00	0.00
135	0.00	0.00	0.00	0.00	0.00	0.00	0.00	0.00	0.00	0.00	0.00	0.00	0.00	0.00	0.00	0.00	0.00	0.00	0.00
140	0.00	0.00	0.00	0.00	0.00	0.00	0.00	0.00	0.00	0.00	0.00	0.00	0.00	0.00	0.00	0.00	0.00	0.00	0.00
145	0.00	0.00	0.00	0.00	0.00	0.00	0.00	0.00	0.00	0.00	0.00	0.00	0.00	0.00	0.00	0.00	0.00	0.00	0.00
150	0.00	0.00	0.00	0.00	0.00	0.00	0.00	0.00	0.00	0.00	0.00	0.00	0.00	0.00	0.00	0.00	0.00	0.00	0.00
155	0.00	0.00	0.00	0.00	0.00	0.00	0.00	0.00	0.00	0.00	0.00	0.00	0.00	0.00	0.00	0.00	0.00	0.00	0.00
160	0.00	0.00	0.00	0.00	0.00	0.00	0.00	0.00	0.00	0.00	0.00	0.00	0.00	0.00	0.00	0.00	0.00	0.00	0.00
165	0.00	0.00	0.00	0.00	0.00	0.00	0.00	0.00	0.00	0.00	0.00	0.00	0.00	0.00	0.00	0.00	0.00	0.00	0.00
170	0.00	0.00	0.00	0.00	0.00	0.00	0.00	0.00	0.00	0.00	0.00	0.00	0.00	0.00	0.00	0.00	0.00	0.00	0.00
175	0.00	0.00	0.00	0.00	0.00	0.00	0.00	0.00	0.00	0.00	0.00	0.00	0.00	0.00	0.00	0.00	0.00	0.00	0.00
180	0.00	0.00	0.00	0.00	0.00	0.00	0.00	0.00	0.00	0.00	0.00	0.00	0.00	0.00	0.00	0.00	0.00	0.00	0.00

C Range: 0 - 360DEG
 C Interval: 15.0DEG
 Test Speed: HIGH
 Temperature:25.3DEG
 Operators:YU
 Test Date:2019-04-19

γ Range: 0 - 100DEG
 γ Interval: 1.0DEG
 Test System:EVERFINE GO-2000B_V1 SYSTEM V2.0.402
 Humidity:65.0%
 Test Distance:7.460m [K=1.0000]
 Remarks:

LUMINOUS DISTRIBUTION INTENSITY DATA

Test:U:221.10V I:0.1680A P:36.100W PF:0.9720 Freq:50.00Hz Lamp Flux:3229.03x1 lm		
NAME: UGR19-LPE36W-120/30	TYPE:	WEIGHT:
SPEC.:	DIM.:	SERIAL No.:
MFR.:	SUR.:	Shielding Angle:

Table--2

UNIT: cd

C (DEG) γ (DEG)	285	300	315	330	345														
0	1684	1682	1684	1685	1684														
5	1681	1683	1690	1695	1698														
10	1664	1672	1686	1699	1707														
15	1619	1630	1654	1676	1685														
20	1533	1549	1576	1601	1608														
25	1408	1426	1448	1470	1472														
30	1257	1270	1288	1309	1303														
35	1084	1089	1106	1141	1109														
40	872	881	859	864	851														
45	655	671	639	620	629														
50	475	475	484	467	459														
55	362	372	388	328	352														
60	301	280	273	219	260														
65	238	190	215	179	197														
70	174	149	142	158	159														
75	117	122	120	122	120														
80	81.3	85.4	84.5	80.8	83.3														
85	45.8	42.5	45.9	44.0	52.1														
90	2.93	2.77	2.70	2.46	2.35														
95	3.44	3.32	3.16	3.01	2.90														
100	4.33	4.19	4.02	3.85	3.75														
105	0.00	0.00	0.00	0.00	0.00														
110	0.00	0.00	0.00	0.00	0.00														
115	0.00	0.00	0.00	0.00	0.00														
120	0.00	0.00	0.00	0.00	0.00														
125	0.00	0.00	0.00	0.00	0.00														
130	0.00	0.00	0.00	0.00	0.00														
135	0.00	0.00	0.00	0.00	0.00														
140	0.00	0.00	0.00	0.00	0.00														
145	0.00	0.00	0.00	0.00	0.00														
150	0.00	0.00	0.00	0.00	0.00														
155	0.00	0.00	0.00	0.00	0.00														
160	0.00	0.00	0.00	0.00	0.00														
165	0.00	0.00	0.00	0.00	0.00														
170	0.00	0.00	0.00	0.00	0.00														
175	0.00	0.00	0.00	0.00	0.00														
180	0.00	0.00	0.00	0.00	0.00														

C Range: 0 - 360DEG
 C Interval: 15.0DEG
 Test Speed: HIGH
 Temperature:25.3DEG
 Operators:YU
 Test Date:2019-04-19

γ Range: 0 - 100DEG
 γ Interval: 1.0DEG
 Test System:EVERFINE GO-2000B_V1 SYSTEM V2.0.402
 Humidity:65.0%
 Test Distance:7.460m [K=1.0000]
 Remarks: