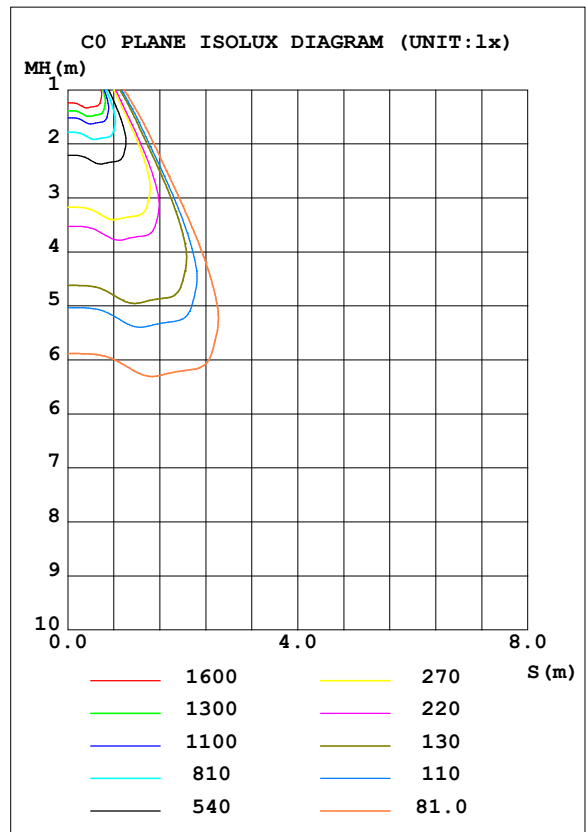
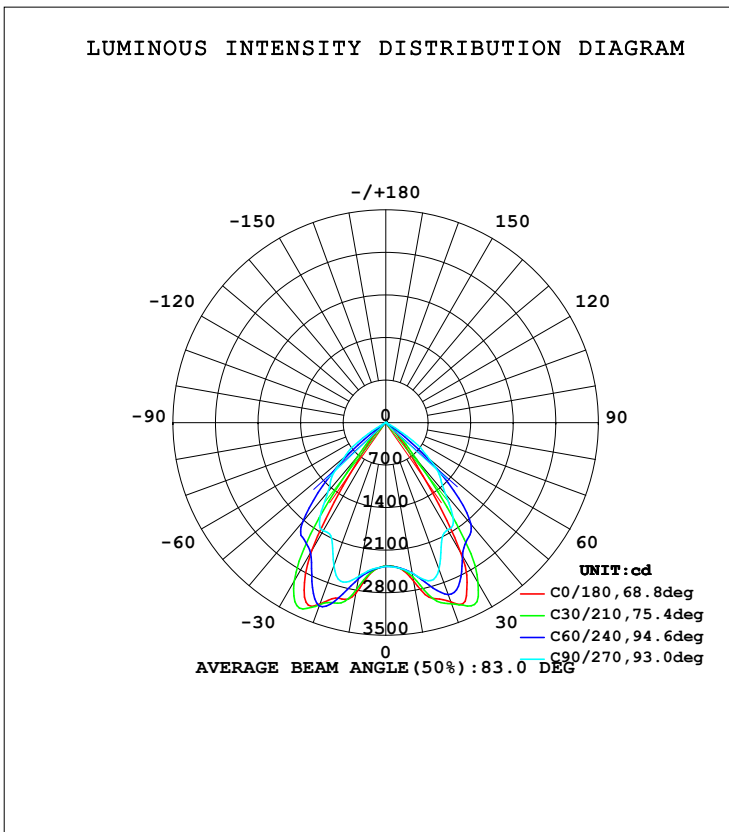


LUMINAIRE PHOTOMETRIC TEST REPORT

Test:U:221.2V I:0.1390A P:29.70W PF:0.9640 Lamp Flux:4487.97x1 lm		
NAME: LED Modular panel light 30W	TYPE:	WEIGHT:
SPEC.:	DIM.:	SERIAL No.:
MFR.:	SUR.: 600x600mm	PROTECTION ANGLE:

DATA OF LAMP		PHOTOMETRIC DATA Eff: 151.11 lm/W			
MODEL		I _{max} (cd)	3394	S/MH (C0/180)	0.98
NOMINAL POWER (W)		LOR (%)	100.0	S/MH (C90/270)	1.25
RATED VOLTAGE (V)		TOTAL FLUX (lm)	4488.0	η UP, DN (C0-180)	0.0, 51.0
NOMINAL FLUX (lm)	4487.97	CIE CLASS	DIRECT	η UP, DN (C180-360)	0.0, 48.9
LAMPS INSIDE	1	η up (%)	0.1	CIBSE SHR NOM	0.50
TEST VOLTAGE (V)		η down (%)	99.9	CIBSE SHR MAX	0.65



C Range: 0 - 360DEG
 C Interval: 15.0DEG
 Test Speed: HIGH
 Temperature: 25.3DEG
 Operators: yu
 Test Date: 2018-06-02

γ Range: 0 - 180DEG
 γ Interval: 1.0DEG
 Test System: EVERFINE GO-2000B_V1 SYSTEM V2.0.287
 Humidity: 65.0%
 Test Distance: 8.770m [K=1.0000]
 Remarks:

ZONAL FLUX DIAGRAM

ZONAL FLUX DIAGRAM:

γ	C0	C45	C90	C135	C180	C225	C270	C315	γ	Φ zone	Φ total	%lum, lamp
10	2646	2531	2516	2599	2843	2707	2567	2607	0- 10	237.3	237.3	5.29,5.29
20	3140	3254	2567	3264	3172	3241	2502	3300	10- 20	825.2	1063	23.7,23.7
30	2473	3031	2041	2968	2443	3002	2056	2877	20- 30	1334	2397	53.4,53.4
40	459.3	1669	1527	1896	430.7	1500	1474	1573	30- 40	1220	3617	80.6,80.6
50	89.55	238.8	951.8	302.2	62.96	194.7	903.5	211.9	40- 50	654.2	4271	95.2,95.2
60	3.337	6.187	177.3	7.367	3.304	5.324	120.5	5.504	50- 60	197.9	4469	99.6,99.6
70	1.890	2.357	3.684	2.432	2.010	2.401	3.447	2.422	60- 70	11.18	4480	99.8,99.8
80	1.105	1.213	2.495	1.200	1.063	1.187	2.181	1.214	70- 80	2.133	4483	99.9,99.9
90	0.8309	2.006	3.276	2.081	0.8188	1.811	2.968	1.703	80- 90	1.669	4484	99.9,99.9
100	3.020	5.215	6.994	5.536	2.155	4.684	6.129	4.944	90-100	3.450	4488	100,100
110	0	0	0	0	0	0	0	0	100-110	0.2571	4488	100,100
120	0	0	0	0	0	0	0	0	110-120	0	4488	100,100
130	0	0	0	0	0	0	0	0	120-130	0	4488	100,100
140	0	0	0	0	0	0	0	0	130-140	0	4488	100,100
150	0	0	0	0	0	0	0	0	140-150	0	4488	100,100
160	0	0	0	0	0	0	0	0	150-160	0	4488	100,100
170	0	0	0	0	0	0	0	0	160-170	0	4488	100,100
180	0	0	0	0	0	0	0	0	170-180	0	4488	100,100
DEG	LUMINOUS INTENSITY:cd									UNIT:lm		

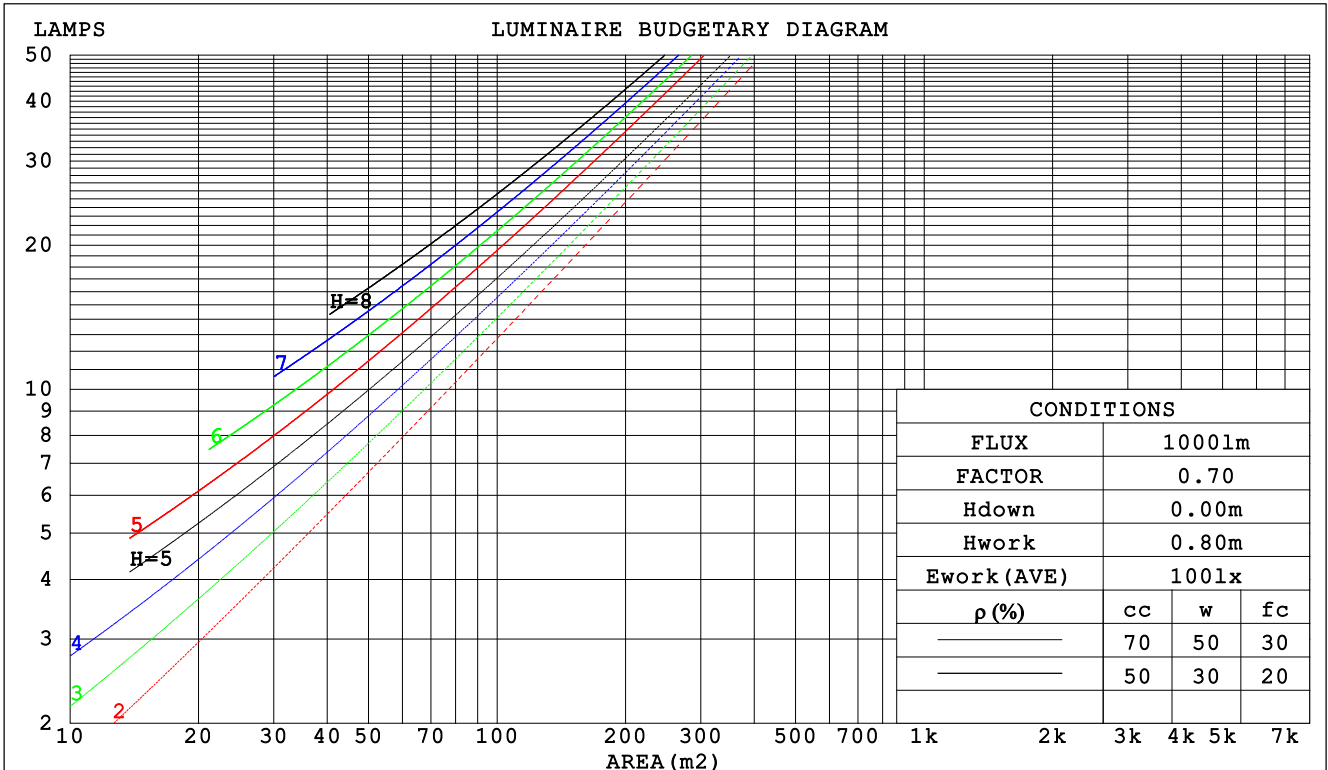
C Range: 0 - 360DEG
 C Interval: 15.0DEG
 Test Speed: HIGH
 Temperature:25.3DEG
 Operators:yu
 Test Date:2018-06-02

γ Range: 0 - 180DEG
 γ Interval: 1.0DEG
 γ Test System:EVERFINE GO-2000B_V1 SYSTEM V2.0.287
 Humidity:65.0%
 Test Distance:8.770m [K=1.0000]
 Remarks:

CU AND LUMINAIRE BUDGETARY ESTIMATE DIAGRAM

Test:U:221.2V I:0.1390A P:29.70W PF:0.9640 Lamp Flux:4487.97x1 lm		
NAME: LED Modular panel light 30W	TYPE:	WEIGHT:
SPEC.:	DIM.:	SERIAL No.:
MFR.:	SUR.:600x600mm	PROTECTION ANGLE:

ρcc	80%			70%			50%			30%			10%			0
ρw	50%	30%	10%	50%	30%	10%	50%	30%	10%	50%	30%	10%	50%	30%	10%	0
ρfc	20%			20%			20%			20%			20%			0
RCR	RCR:Room Cavity Ratio															
	Coefficients of Utilization(CU)															
0.0	1.19	1.19	1.19	1.16	1.16	1.16	1.11	1.11	1.11	1.06	1.06	1.06	1.02	1.02	1.02	.00
1.0	1.10	1.07	1.04	1.07	1.05	1.03	1.03	1.01	.99	.00	.98	.96	.96	.95	.94	.92
2.0	1.01	.96	.92	.99	.95	.91	.96	.92	.89	.92	.90	.87	.90	.87	.85	.84
3.0	.92	.87	.82	.91	.86	.81	.88	.84	.80	.86	.82	.79	.83	.80	.78	.76
4.0	.85	.79	.74	.84	.78	.73	.81	.76	.72	.79	.75	.71	.77	.74	.71	.69
5.0	.78	.71	.67	.77	.71	.66	.75	.70	.66	.74	.69	.65	.72	.68	.64	.63
6.0	.72	.65	.60	.71	.65	.60	.70	.64	.60	.68	.63	.59	.67	.62	.59	.57
7.0	.67	.60	.55	.66	.59	.55	.65	.59	.55	.63	.58	.54	.62	.57	.54	.52
8.0	.62	.55	.50	.61	.55	.50	.60	.54	.50	.59	.54	.50	.58	.53	.50	.48
9.0	.58	.51	.46	.57	.51	.46	.56	.50	.46	.55	.50	.46	.54	.49	.46	.44
10.0	.54	.47	.43	.53	.47	.43	.52	.47	.42	.52	.46	.42	.51	.46	.42	.41



C Range: 0 - 360DEG
 C Interval: 15.0DEG
 Test Speed: HIGH
 Temperature:25.3DEG
 Operators:yu
 Test Date:2018-06-02

γ Range: 0 - 180DEG
 γ Interval: 1.0DEG
 Test System:EVERFINE GO-2000B_V1 SYSTEM V2.0.287
 Humidity:65.0%
 Test Distance:8.770m [K=1.0000]
 Remarks:

WEC AND CCEC

Test:U:221.2V I:0.1390A P:29.70W PF:0.9640 Lamp Flux:4487.97x1 lm									
NAME: LED Modular panel light 30W					TYPE:			WEIGHT:	
SPEC.:					DIM.:			SERIAL No.:	
MFR.:					SUR.:600x600mm			PROTECTION ANGLE:	

ρ_{cc}	80%			70%			50%			30%			10%			0
ρ_w	50%	30%	10%	50%	30%	10%	50%	30%	10%	50%	30%	10%	50%	30%	10%	0
ρ_{fc}	20%			20%			20%			20%			20%			0
RCR	RCR:Room Cavity Ratio						Wall Exitance Coefficients (WEC)									
0.0																
1.0	.199	.113	.036	.192	.110	.035	.180	.103	.033	.168	.097	.031	.157	.091	.029	
2.0	.194	.106	.033	.188	.104	.032	.178	.099	.031	.168	.094	.029	.158	.090	.028	
3.0	.187	.099	.030	.182	.097	.029	.172	.093	.028	.164	.090	.028	.156	.086	.027	
4.0	.179	.093	.027	.174	.091	.027	.166	.088	.026	.159	.085	.026	.152	.082	.025	
5.0	.171	.087	.025	.167	.086	.025	.160	.083	.024	.153	.081	.024	.147	.078	.024	
6.0	.163	.082	.023	.160	.081	.023	.153	.079	.023	.147	.077	.022	.142	.075	.022	
7.0	.156	.077	.022	.153	.076	.022	.147	.074	.021	.142	.073	.021	.137	.071	.021	
8.0	.149	.073	.020	.146	.072	.020	.141	.070	.020	.136	.069	.020	.132	.068	.020	
9.0	.142	.069	.019	.140	.068	.019	.135	.067	.019	.131	.066	.019	.127	.064	.019	
10.0	.136	.065	.018	.134	.065	.018	.130	.064	.018	.126	.062	.018	.122	.061	.018	

ρ_{cc}	80%			70%			50%			30%			10%			0
ρ_w	50%	30%	10%	50%	30%	10%	50%	30%	10%	50%	30%	10%	50%	30%	10%	0
ρ_{fc}	20%			20%			20%			20%			20%			0
RCR	RCR:Room Cavity Ratio						Ceiling Cavity Exitance Coefficients (CCEC)									
0.0	.191	.191	.191	.163	.163	.163	.111	.111	.111	.064	.064	.064	.020	.020	.020	
1.0	.173	.158	.144	.148	.135	.124	.101	.093	.086	.058	.054	.050	.019	.017	.016	
2.0	.160	.133	.110	.137	.115	.095	.094	.079	.067	.054	.046	.039	.017	.015	.013	
3.0	.149	.114	.087	.128	.099	.075	.088	.069	.053	.051	.040	.031	.016	.013	.010	
4.0	.140	.100	.069	.120	.086	.060	.083	.060	.042	.048	.035	.025	.015	.011	.008	
5.0	.132	.089	.057	.114	.077	.049	.078	.054	.035	.045	.032	.021	.015	.010	.007	
6.0	.126	.080	.047	.108	.069	.041	.075	.048	.029	.043	.029	.017	.014	.009	.006	
7.0	.120	.073	.040	.103	.063	.035	.071	.044	.025	.041	.026	.015	.013	.009	.005	
8.0	.114	.067	.034	.098	.058	.030	.068	.041	.021	.040	.024	.013	.013	.008	.004	
9.0	.109	.062	.030	.094	.054	.026	.065	.038	.018	.038	.022	.011	.012	.007	.004	
10.0	.105	.058	.026	.090	.050	.023	.063	.035	.016	.037	.021	.010	.012	.007	.003	

C Range: 0 - 360DEG
C Interval: 15.0DEG
Test Speed: HIGH
Temperature:25.3DEG
Operators:yu
Test Date:2018-06-02

γ Range: 0 - 180DEG
 γ Interval: 1.0DEG
Test System:EVERFINE GO-2000B_V1 SYSTEM V2.0.287
Humidity:65.0%
Test Distance:8.770m [K=1.0000]
Remarks:

UGR(Unified Glare Rating) Table

Test:U:221.2V I:0.1390A P:29.70W PF:0.9640 Lamp Flux:4487.97x1 lm										
NAME: LED Modular panel light 30W					TYPE:			WEIGHT:		
SPEC.:					DIM.:			SERIAL No.:		
MFR.:					SUR.:600x600mm			PROTECTION ANGLE:		
ceiling/cavity	0.7	0.7	0.5	0.5	0.3	0.7	0.7	0.5	0.5	0.3
walls	0.5	0.3	0.5	0.3	0.3	0.5	0.3	0.5	0.3	0.3
working plane	0.2	0.2	0.2	0.2	0.2	0.2	0.2	0.2	0.2	0.2
Room dimensions	Viewed crosswise					Viewed endwise				
x = 2H y = 2H	10.6	11.7	10.8	11.9	12.0	16.0	17.1	16.3	17.3	17.5
3H	10.4	11.4	10.7	11.6	11.8	15.8	16.9	16.1	17.1	17.3
4H	10.3	11.2	10.6	11.5	11.7	15.7	16.7	16.0	16.9	17.2
6H	10.2	11.1	10.5	11.3	11.6	15.6	16.5	16.0	16.8	17.1
8H	10.1	11.0	10.5	11.3	11.5	15.6	16.5	15.9	16.7	17.0
12H	10.1	10.9	10.4	11.2	11.5	15.6	16.4	15.9	16.7	16.9
4H 2H	10.4	11.3	10.7	11.6	11.8	15.7	16.7	16.0	16.9	17.2
3H	10.2	11.0	10.5	11.3	11.6	15.6	16.4	15.9	16.7	16.9
4H	10.1	10.8	10.5	11.1	11.5	15.5	16.2	15.8	16.5	16.8
6H	10.0	10.7	10.4	11.0	11.3	15.4	16.0	15.8	16.4	16.7
8H	10.0	10.6	10.4	10.9	11.3	15.3	15.9	15.7	16.3	16.6
12H	9.9	10.5	10.3	10.8	11.2	15.3	15.8	15.7	16.2	16.6
8H 4H	10.0	10.6	10.4	10.9	11.3	15.3	15.9	15.7	16.3	16.6
6H	9.9	10.4	10.3	10.7	11.2	15.2	15.7	15.7	16.1	16.5
8H	9.8	10.2	10.3	10.7	11.1	15.2	15.6	15.6	16.0	16.5
12H	9.8	10.1	10.2	10.6	11.0	15.1	15.5	15.6	15.9	16.4
12H 4H	9.9	10.5	10.3	10.8	11.2	15.3	15.8	15.7	16.2	16.6
6H	9.8	10.2	10.3	10.7	11.1	15.2	15.6	15.6	16.0	16.5
8H	9.8	10.1	10.2	10.6	11.0	15.1	15.5	15.6	15.9	16.4
Variations with the observer position at spacings:										
S = 1.0H	+ 2.9 / -21.2					+ 2.7 / - 3.6				
1.5H	+ 3.8 / -18.8					+ 1.8 / -10.3				
2.0H	+ 6.3 / -13.9					+ 4.8 / -24.5				

CIE Pub.117 Corrected 4488 lm Total Lamp Luminous Flux. (8log(F/F0) = 5.2)

C Range: 0 - 360DEG
C Interval: 15.0DEG
Test Speed: HIGH
Temperature:25.3DEG
Operators:yu
Test Date:2018-06-02

γ Range: 0 - 180DEG
 γ Interval: 1.0DEG
Test System:EVERFINE GO-2000B_V1 SYSTEM V2.0.287
Humidity:65.0%
Test Distance:8.770m [K=1.0000]
Remarks:

UTILIZATION FACTORS TABLE

Test:U:221.2V I:0.1390A P:29.70W PF:0.9640 Lamp Flux:4487.97x1 lm		
NAME: LED Modular panel light 30W	TYPE:	WEIGHT:
SPEC.:	DIM.:	SERIAL No.:
MFR.:	SUR.:600x600mm	PROTECTION ANGLE:

REFLECTANCE										
Ceiling	0.8	0.8	0.8	0.7	0.7	0.7	0.5	0.5	0.5	0
Walls	0.7	0.5	0.3	0.7	0.5	0.3	0.7	0.5	0.3	0
Working plane	0.2	0.2	0.2	0.2	0.2	0.2	0.2	0.2	0.2	0
ROOM INDEX	UTILIZATION FACTORS (PERCENT) $k(RI) \times RCR = 5$									
k = 0.60	79	71	66	78	71	66	77	71	66	62
0.80	88	81	76	87	80	76	86	80	75	71
1.00	94	87	83	93	87	83	92	87	82	78
1.25	99	93	89	98	93	89	96	91	88	83
1.50	103	97	93	101	96	93	99	95	91	86
2.00	106	102	98	105	100	97	102	98	96	90
2.50	108	104	100	107	103	100	103	100	98	91
3.00	110	106	103	108	105	102	105	102	100	93
4.00	112	109	107	110	107	105	107	104	102	95
5.00	114	111	109	112	109	107	107	106	104	96
ROOM INDEX	UF(total)									Direct
According to DIN EN 13032-2 2004			Suspended				SHRNOM = 1.25			

C Range: 0 - 360DEG
C Interval: 15.0DEG
Test Speed: HIGH
Temperature:25.3DEG
Operators:yu
Test Date:2018-06-02

γ Range: 0 - 180DEG
 γ Interval: 1.0DEG
Test System:EVERFINE GO-2000B_V1 SYSTEM V2.0.287
Humidity:65.0%
Test Distance:8.770m [K=1.0000]
Remarks:

ISOCANDELA DIAGRAM

Test:U:221.2V I:0.1390A P:29.70W PF:0.9640 Lamp Flux:4487.97x1 lm		
NAME: LED Modular panel light 30W	TYPE:	WEIGHT:
SPEC.:	DIM.:	SERIAL No.:
MFR.:	SUR.: 600x600mm	PROTECTION ANGLE:

Conical surface Flux(90deg):

4008.7 lm

%lum = 89.3%

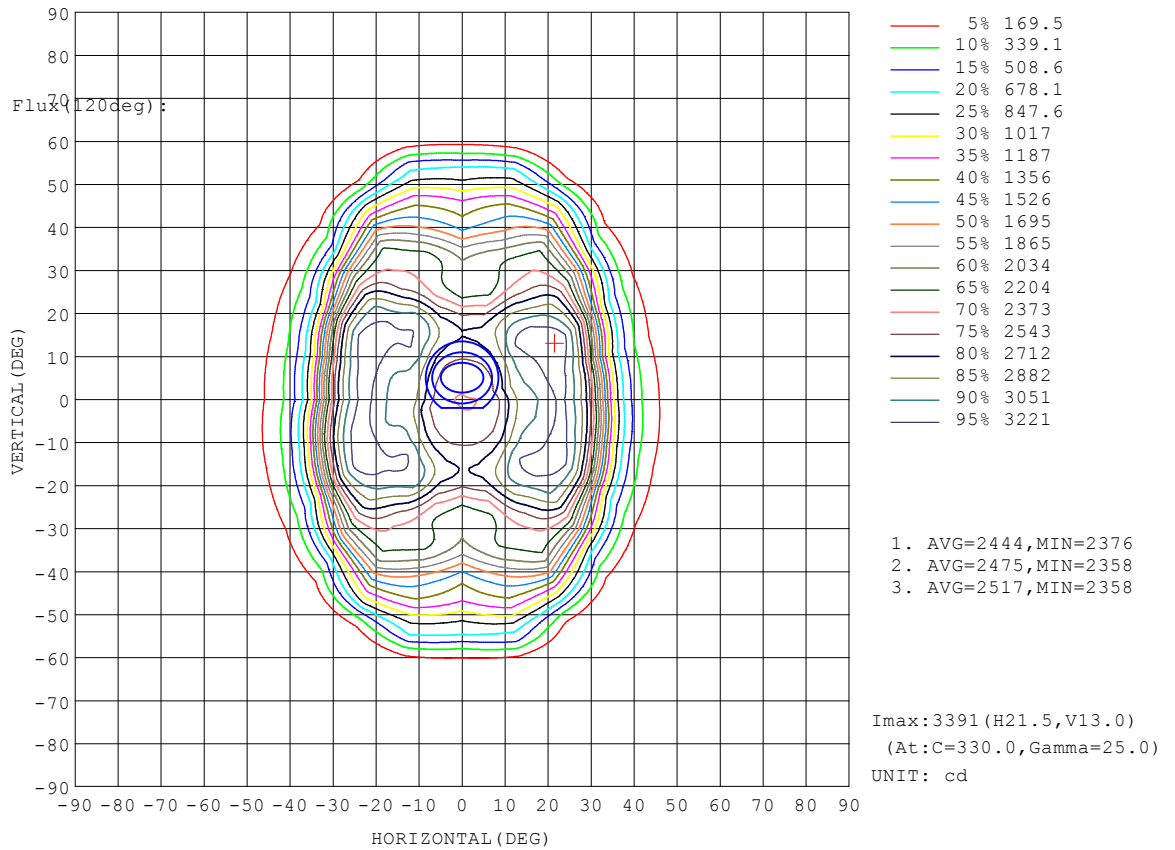
%lamp = 89.3%

Conical surface Flux(20deg):

4469.3 lm

%lum = 99.6%

%lamp = 99.6%

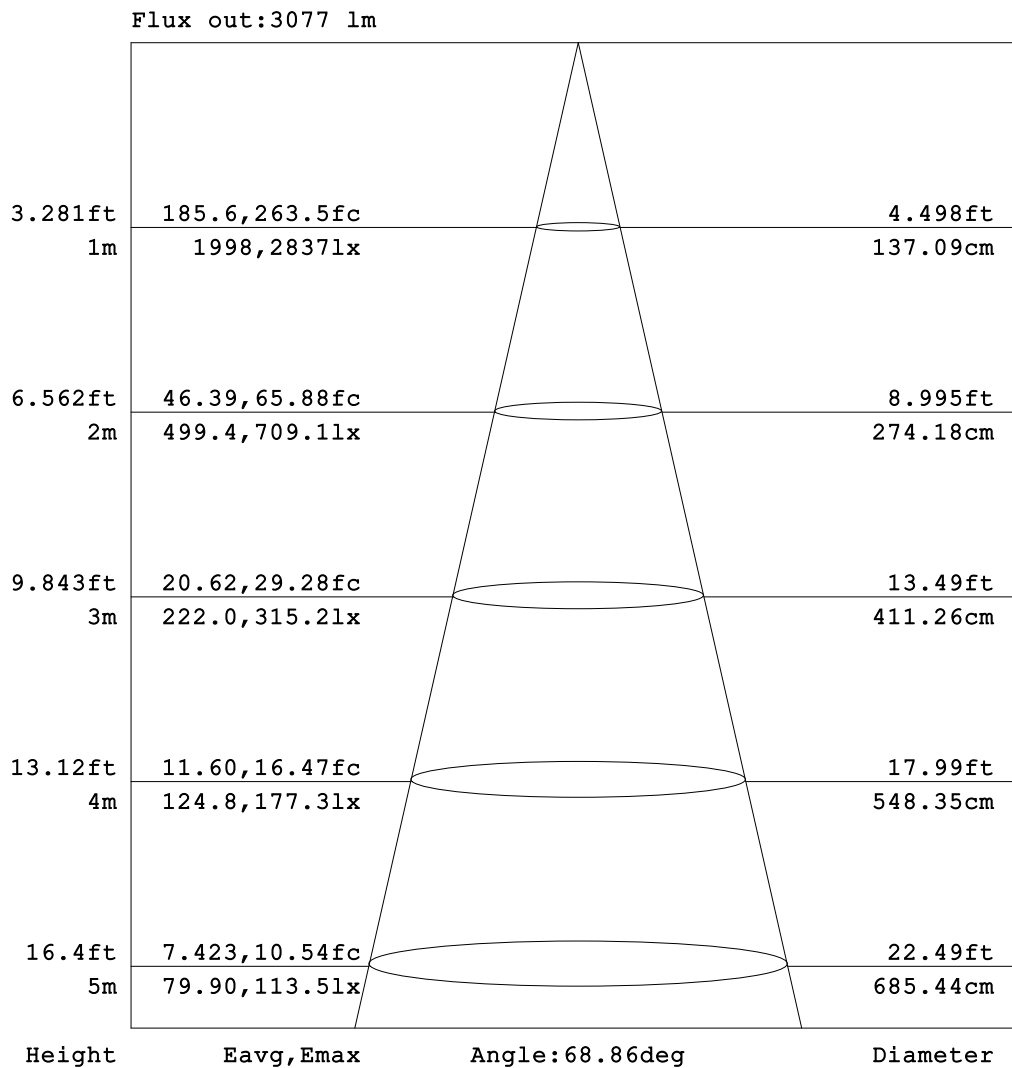


C Range: 0 - 360DEG
 C Interval: 15.0DEG
 Test Speed: HIGH
 Temperature:25.3DEG
 Operators:yu
 Test Date:2018-06-02

γ Range: 0 - 180DEG
 γ Interval: 1.0DEG
 Test System:EVERFINE GO-2000B_V1 SYSTEM V2.0.287
 Humidity:65.0%
 Test Distance:8.770m [K=1.0000]
 Remarks:

AAI Figure

Test:U:221.2V I:0.1390A P:29.70W PF:0.9640 Lamp Flux:4487.97x1 lm		
NAME: LED Modular panel light 30W	TYPE:	WEIGHT:
SPEC.:	DIM.:	SERIAL No.:
MFR.:	SUR.:600x600mm	PROTECTION ANGLE:



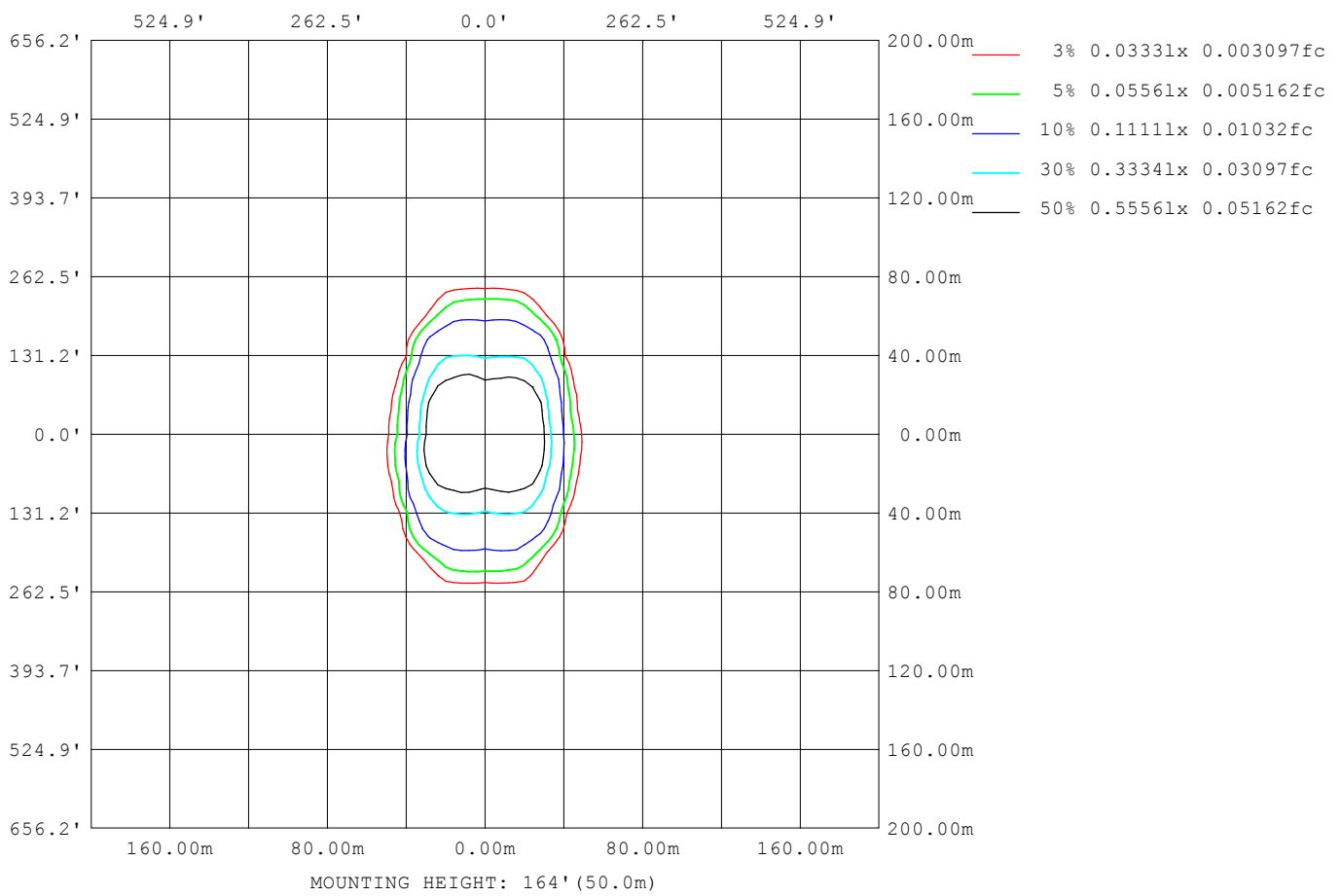
Note:The Curves indicate the illuminated area and the average illumination when the luminaire is at different distance.

C Range: 0 - 360DEG
 C Interval: 15.0DEG
 Test Speed: HIGH
 Temperature:25.3DEG
 Operators:yu
 Test Date:2018-06-02

γ Range: 0 - 180DEG
 γ Interval: 1.0DEG
 Test System:EVERFINE GO-2000B_V1 SYSTEM V2.0.287
 Humidity:65.0%
 Test Distance:8.770m [K=1.0000]
 Remarks:

ISOLUX DIAGRAM

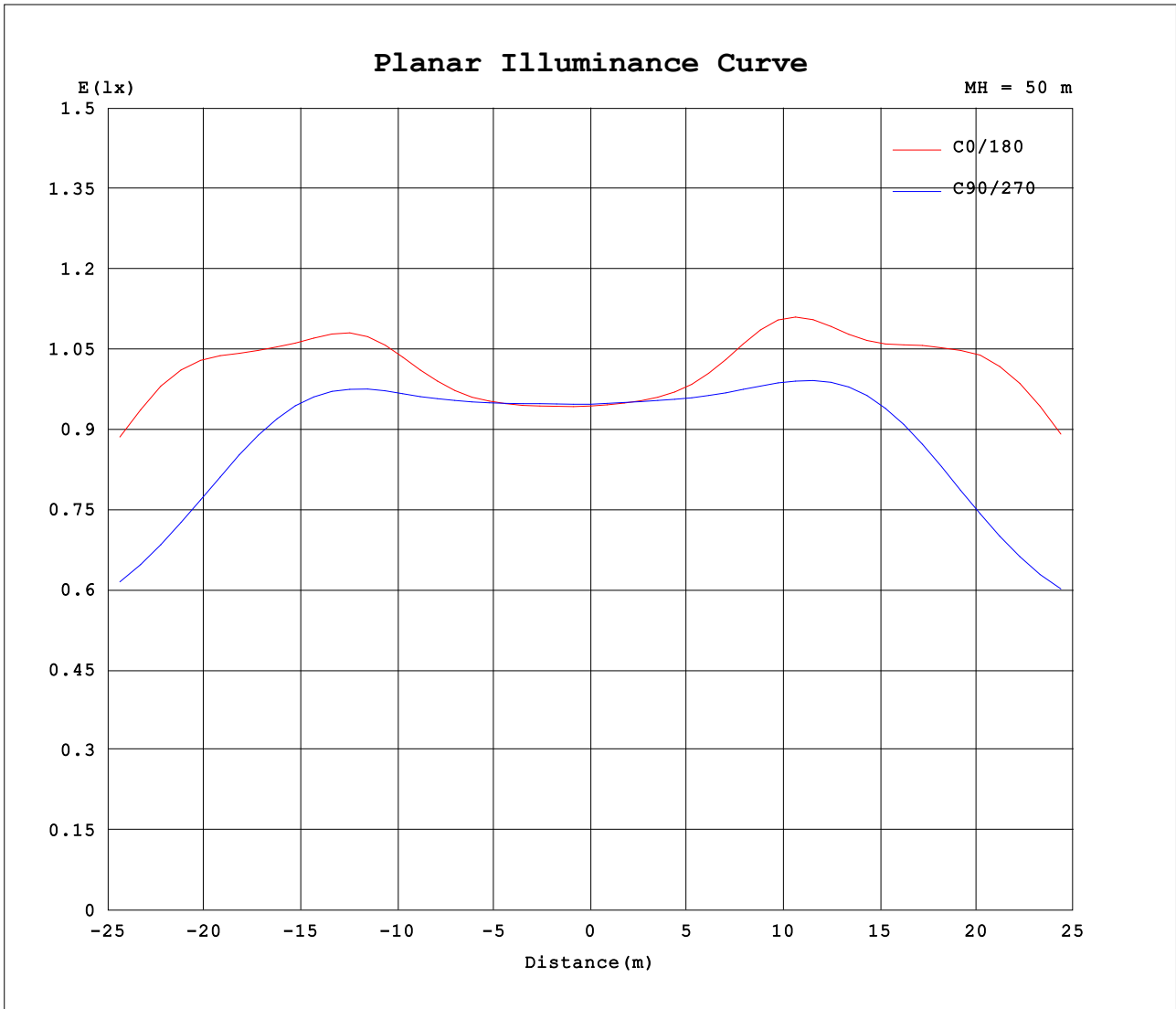
Test:U:221.2V I:0.1390A P:29.70W PF:0.9640 Lamp Flux:4487.97x1 lm		
NAME: LED Modular panel light 30W	TYPE:	WEIGHT:
SPEC.:	DIM.:	SERIAL No.:
MFR.:	SUR.: 600x600mm	PROTECTION ANGLE:



C Range: 0 - 360DEG
 C Interval: 15.0DEG
 Test Speed: HIGH
 Temperature:25.3DEG
 Operators:yu
 Test Date:2018-06-02

γ Range: 0 - 180DEG
 γ Interval: 1.0DEG
 Test System:EVERFINE GO-2000B_V1 SYSTEM V2.0.287
 Humidity:65.0%
 Test Distance:8.770m [K=1.0000]
 Remarks:

Planar Illuminance Curve



C Range: 0 - 360DEG
 C Interval: 15.0DEG
 Test Speed: HIGH
 Temperature: 25.3DEG
 Operators: yu
 Test Date: 2018-06-02

γ Range: 0 - 180DEG
 γ Interval: 1.0DEG
 Test System: EVERFINE GO-2000B_V1 SYSTEM V2.0.287
 Humidity: 65.0%
 Test Distance: 8.770m [K=1.0000]
 Remarks:

LUMINOUS DISTRIBUTION INTENSITY DATA

Test:U:221.2V I:0.1390A P:29.70W PF:0.9640 Lamp Flux:4487.97x1 lm		
NAME: LED Modular panel light 30W	TYPE:	WEIGHT:
SPEC.:	DIM.:	SERIAL No.:
MFR.:	SUR.:600x600mm	PROTECTION ANGLE:

Table--1

UNIT: cd

C (DEG) γ (DEG)	0	15	30	45	60	75	90	105	120	135	150	165	180	195	210	225	240	255	270
0	2360	2361	2362	2364	2365	2367	2368	2369	2369	2370	2369	2367	2360	2361	2362	2364	2365	2367	2368
5	2397	2395	2396	2395	2396	2394	2398	2402	2410	2416	2424	2422	2452	2457	2448	2442	2430	2425	2418
10	2646	2619	2579	2531	2516	2510	2516	2522	2550	2599	2682	2725	2843	2848	2789	2707	2611	2582	2567
15	2992	2995	2994	2894	2773	2702	2693	2725	2855	3022	3064	3019	2990	3004	3074	3141	2978	2783	2716
20	3140	3128	3171	3254	3008	2664	2567	2707	3137	3264	3139	3116	3172	3180	3190	3241	3205	2701	2502
25	3145	3237	3327	3210	2888	2329	2174	2373	2932	3175	3336	3297	3167	3229	3363	3214	2878	2366	2111
30	2473	2718	3041	3031	2531	2182	2041	2215	2503	2968	3177	2890	2443	2597	3012	3002	2481	2293	2056
35	1068	1345	2023	2513	2343	2203	1937	2234	2338	2555	2332	1647	1012	1184	1911	2383	2349	2225	1885
40	459	554	786	1669	2182	1871	1527	1871	2168	1896	948	609	431	484	691	1500	2128	1784	1474
45	202	231	337	697	1585	1489	1270	1493	1639	902	389	266	203	216	294	571	1467	1425	1253
50	89.5	99.4	103	239	836	1141	952	1127	1039	302	141	112	63.0	74.0	95.0	195	753	1027	904
55	8.55	6.75	14.5	43.9	208	680	653	726	308	66.1	24.1	7.13	7.22	5.72	9.55	30.7	157	616	570
60	3.34	3.66	4.48	6.19	23.4	217	177	210	39.3	7.37	4.75	3.90	3.30	3.55	4.24	5.32	16.6	130	121
65	2.45	2.51	2.87	3.77	5.01	16.3	13.1	15.6	5.50	3.90	3.08	2.68	2.50	2.65	2.85	3.52	4.67	8.56	7.98
70	1.89	1.93	2.12	2.36	3.53	4.18	3.68	4.34	3.60	2.43	2.24	2.10	2.01	2.12	2.13	2.40	3.17	3.97	3.45
75	1.46	1.43	1.44	1.59	2.16	3.07	2.78	3.13	2.21	1.71	1.52	1.46	1.40	1.51	1.43	1.66	2.02	2.87	2.56
80	1.10	1.07	1.09	1.21	1.71	2.30	2.50	2.47	1.80	1.20	1.05	0.98	1.06	1.13	1.05	1.19	1.49	2.04	2.18
85	0.94	0.92	1.04	1.43	1.84	2.33	2.52	2.43	1.87	1.43	1.00	0.85	0.84	0.92	0.91	1.22	1.60	1.96	2.26
90	0.83	0.93	1.26	2.01	2.56	3.05	3.28	3.17	2.70	2.08	1.27	0.89	0.82	0.82	1.10	1.81	2.22	2.68	2.97
95	1.50	1.74	2.43	3.38	4.07	4.64	4.92	4.83	4.24	3.55	2.48	1.62	1.23	1.39	2.01	3.11	3.54	4.11	4.43
100	3.02	3.35	4.23	5.22	5.88	6.59	6.99	6.83	6.13	5.54	4.34	3.14	2.15	2.50	3.59	4.68	5.13	5.75	6.13
105	0.00	0.00	0.00	0.00	0.00	0.00	0.00	0.00	0.00	0.00	0.00	0.00	0.00	0.00	0.00	0.00	0.00	0.00	0.00
110	0.00	0.00	0.00	0.00	0.00	0.00	0.00	0.00	0.00	0.00	0.00	0.00	0.00	0.00	0.00	0.00	0.00	0.00	0.00
115	0.00	0.00	0.00	0.00	0.00	0.00	0.00	0.00	0.00	0.00	0.00	0.00	0.00	0.00	0.00	0.00	0.00	0.00	0.00
120	0.00	0.00	0.00	0.00	0.00	0.00	0.00	0.00	0.00	0.00	0.00	0.00	0.00	0.00	0.00	0.00	0.00	0.00	0.00
125	0.00	0.00	0.00	0.00	0.00	0.00	0.00	0.00	0.00	0.00	0.00	0.00	0.00	0.00	0.00	0.00	0.00	0.00	0.00
130	0.00	0.00	0.00	0.00	0.00	0.00	0.00	0.00	0.00	0.00	0.00	0.00	0.00	0.00	0.00	0.00	0.00	0.00	0.00
135	0.00	0.00	0.00	0.00	0.00	0.00	0.00	0.00	0.00	0.00	0.00	0.00	0.00	0.00	0.00	0.00	0.00	0.00	0.00
140	0.00	0.00	0.00	0.00	0.00	0.00	0.00	0.00	0.00	0.00	0.00	0.00	0.00	0.00	0.00	0.00	0.00	0.00	0.00
145	0.00	0.00	0.00	0.00	0.00	0.00	0.00	0.00	0.00	0.00	0.00	0.00	0.00	0.00	0.00	0.00	0.00	0.00	0.00
150	0.00	0.00	0.00	0.00	0.00	0.00	0.00	0.00	0.00	0.00	0.00	0.00	0.00	0.00	0.00	0.00	0.00	0.00	0.00
155	0.00	0.00	0.00	0.00	0.00	0.00	0.00	0.00	0.00	0.00	0.00	0.00	0.00	0.00	0.00	0.00	0.00	0.00	0.00
160	0.00	0.00	0.00	0.00	0.00	0.00	0.00	0.00	0.00	0.00	0.00	0.00	0.00	0.00	0.00	0.00	0.00	0.00	0.00
165	0.00	0.00	0.00	0.00	0.00	0.00	0.00	0.00	0.00	0.00	0.00	0.00	0.00	0.00	0.00	0.00	0.00	0.00	0.00
170	0.00	0.00	0.00	0.00	0.00	0.00	0.00	0.00	0.00	0.00	0.00	0.00	0.00	0.00	0.00	0.00	0.00	0.00	0.00
175	0.00	0.00	0.00	0.00	0.00	0.00	0.00	0.00	0.00	0.00	0.00	0.00	0.00	0.00	0.00	0.00	0.00	0.00	0.00
180	0.00	0.00	0.00	0.00	0.00	0.00	0.00	0.00	0.00	0.00	0.00	0.00	0.00	0.00	0.00	0.00	0.00	0.00	0.00

C Range: 0 - 360DEG
 C Interval: 15.0DEG
 Test Speed: HIGH
 Temperature:25.3DEG
 Operators:yu
 Test Date:2018-06-02

γ Range: 0 - 180DEG
 γ Interval: 1.0DEG
 Test System:EVERFINE GO-2000B_V1 SYSTEM V2.0.287
 Humidity:65.0%
 Test Distance:8.770m [K=1.0000]
 Remarks:

LUMINOUS DISTRIBUTION INTENSITY DATA

Test:U:221.2V I:0.1390A P:29.70W PF:0.9640 Lamp Flux:4487.97x1 lm		
NAME: LED Modular panel light 30W	TYPE:	WEIGHT:
SPEC.:	DIM.:	SERIAL No.:
MFR.:	SUR.: 600x600mm	PROTECTION ANGLE:

Table--2

UNIT: cd

C (DEG) γ (DEG)	285	300	315	330	345														
0	2369	2369	2370	2369	2367														
5	2419	2419	2424	2427	2435														
10	2571	2570	2607	2664	2741														
15	2735	2828	3020	3085	3053														
20	2567	2964	3300	3255	3223														
25	2200	2733	3145	3394	3201														
30	2158	2448	2877	3001	2523														
35	2089	2343	2359	1846	1095														
40	1702	2083	1573	726	458														
45	1453	1489	659	296	183														
50	1031	838	212	83.8	64.6														
55	631	197	32.6	9.17	5.43														
60	113	21.7	5.50	4.43	3.48														
65	7.64	4.84	3.83	2.84	2.58														
70	3.97	3.45	2.42	2.04	1.97														
75	2.91	2.04	1.64	1.42	1.54														
80	2.15	1.60	1.21	1.06	1.20														
85	2.02	1.75	1.19	0.95	0.94														
90	2.77	2.34	1.70	1.22	0.88														
95	4.21	3.74	3.03	2.18	1.59														
100	6.07	5.39	4.94	3.87	2.97														
105	0.00	0.00	0.00	0.00	0.00														
110	0.00	0.00	0.00	0.00	0.00														
115	0.00	0.00	0.00	0.00	0.00														
120	0.00	0.00	0.00	0.00	0.00														
125	0.00	0.00	0.00	0.00	0.00														
130	0.00	0.00	0.00	0.00	0.00														
135	0.00	0.00	0.00	0.00	0.00														
140	0.00	0.00	0.00	0.00	0.00														
145	0.00	0.00	0.00	0.00	0.00														
150	0.00	0.00	0.00	0.00	0.00														
155	0.00	0.00	0.00	0.00	0.00														
160	0.00	0.00	0.00	0.00	0.00														
165	0.00	0.00	0.00	0.00	0.00														
170	0.00	0.00	0.00	0.00	0.00														
175	0.00	0.00	0.00	0.00	0.00														
180	0.00	0.00	0.00	0.00	0.00														

C Range: 0 - 360DEG
 C Interval: 15.0DEG
 Test Speed: HIGH
 Temperature:25.3DEG
 Operators:yu
 Test Date:2018-06-02

γ Range: 0 - 180DEG
 γ Interval: 1.0DEG
 Test System:EVERFINE GO-2000B_V1 SYSTEM V2.0.287
 Humidity:65.0%
 Test Distance:8.770m [K=1.0000]
 Remarks: